

Data Path : Z:\pestpcbsrv\HPCHEM1\ECD_D\Data\PD112224\
 Data File : PD086889.D
 Signal(s) : Signal #1: ECD1A.ch Signal #2: ECD2B.ch
 Acq On : 21 Nov 2024 11:19
 Operator : AR\AJ
 Sample : P4875-02
 Misc :
 ALS Vial : 9 Sample Multiplier: 1

Instrument :
 ECD_D
 ClientSampleId :

Integration File signal 1: autoint1.e
 Integration File signal 2: autoint2.e
 Quant Time: Nov 22 00:35:27 2024
 Quant Method : Z:\pestpcbsrv\HPCHEM1\ECD_D\Method\PD112024CLP.M
 Quant Title : GC Extractables
 QLast Update : Wed Nov 20 02:52:29 2024
 Response via : Initial Calibration
 Integrator: ChemStation

Volume Inj. : 1 µl
 Signal #1 Phase : ZB-MR2 Signal #2 Phase: ZB-MR2
 Signal #1 Info : 30M x 0.32mm x0.5 Signal #2 Info : 30M x 0.32mm x 0.25µm

Compound	RT#1	RT#2	Resp#1	Resp#2	ng/ml	ng/ml

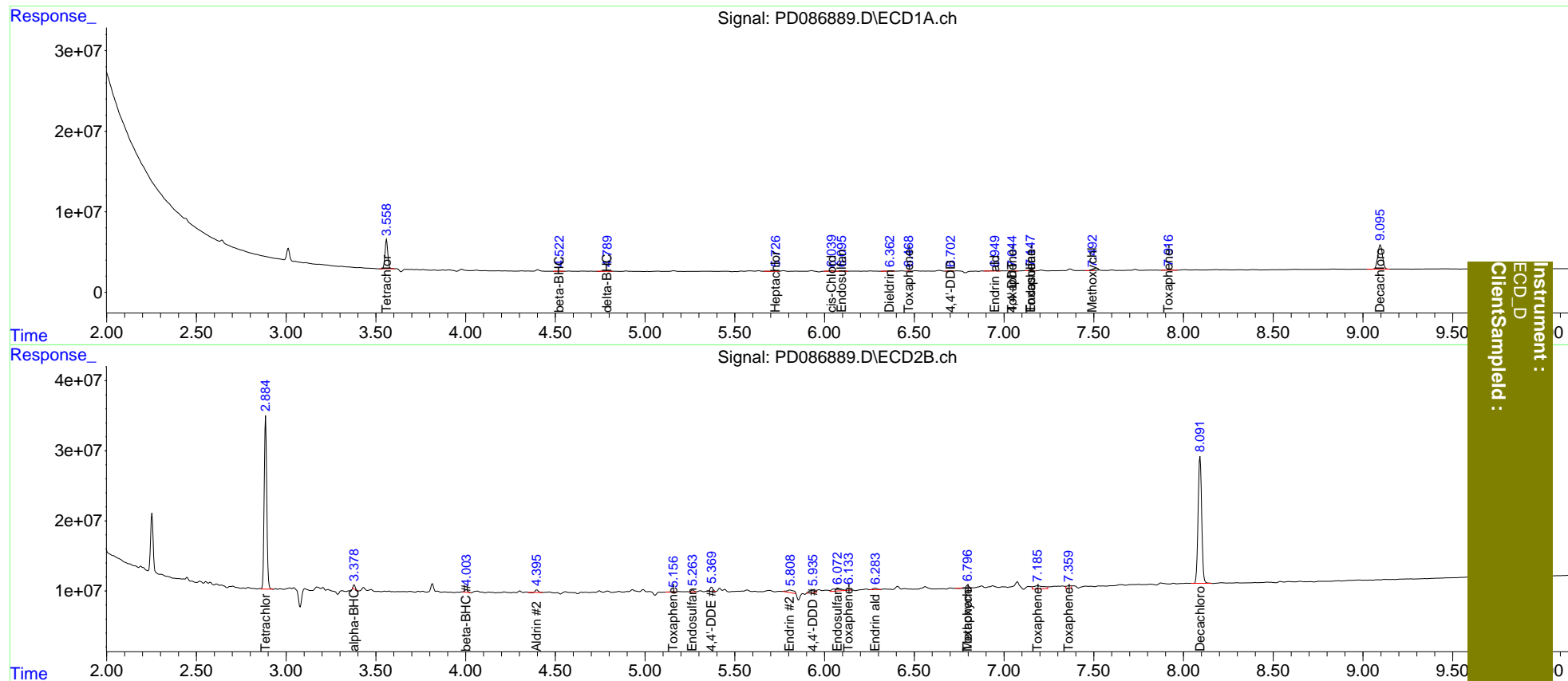
System Monitoring Compounds						
1) SA Tetrachlo...	3.560	2.886	39525310	246.8E6	21.494	21.389
27) SA Decachlor...	9.097	8.092	54726057	252.1E6	20.554	19.781
Target Compounds						
2) A alpha-BHC	0.000	3.379	0	4646946	N.D.	0.259
3) MA gamma-BHC...	4.350	3.737	104097	260238	<MDL	<MDL #
4) MA Heptachlor	4.965	4.092	15858	906464	<MDL	<MDL #
5) MB Aldrin	5.256f	4.397	57795	3548651	<MDL	0.208 #
6) B beta-BHC	4.523	4.004f	427001	4370387	0.269	0.553 #
7) B delta-BHC	4.790	4.269	809084	54992	0.222	<MDL #
8) B Heptachlo...	5.728	4.899	508159	-955212	0.155	N.D. #
9) A Endosulfan I	6.097	5.265	958672	3058655	0.322	0.211 #
10) B trans-Chl...	0.000	5.157	0	1323567	N.D.	<MDL
11) B cis-Chlor...	6.040	5.189	1291267	1199781	0.397	<MDL #
12) B 4,4'-DDE	6.220	5.371	-7668	6883713	N.D.	0.451
13) MA Dieldrin	6.364	5.517	796877	96953	0.243	<MDL #
14) MA Endrin	0.000	5.807	0	9924241	N.D.	0.718
15) B Endosulfa...	6.841f	6.074	-2485511	12844692	N.D.	0.920
16) A 4,4'-DDD	6.704	5.938	332358	9680136	0.140	0.801 #
17) MA 4,4'-DDT	7.045	6.232	343233	966863	0.138	<MDL #
18) B Endrin al...	6.950	6.284	365283	3303981	0.166	0.308 #
19) B Endosulfa...	7.148	6.446f	1140729	821603	0.423	<MDL #
20) A Methoxychlor	7.493	6.797	298662	3928174	0.221	0.679 #
21) B Endrin ke...	7.645	6.994	88588	1326281	<MDL	<MDL #
22) Toxaphene-1	6.220	5.157	-7668	1323567	N.D.	16.223
23) Toxaphene-2	6.469	6.134	83046	3738520	2.932	41.703 #
24) Toxaphene-3	7.045	6.797	343233	3928174	4.238	13.304 #
25) Toxaphene-4	7.148	7.186	1140729	18755784	18.932	90.732 #
26) Toxaphene-5	7.918	7.362	1417866	6077590	32.143	38.717

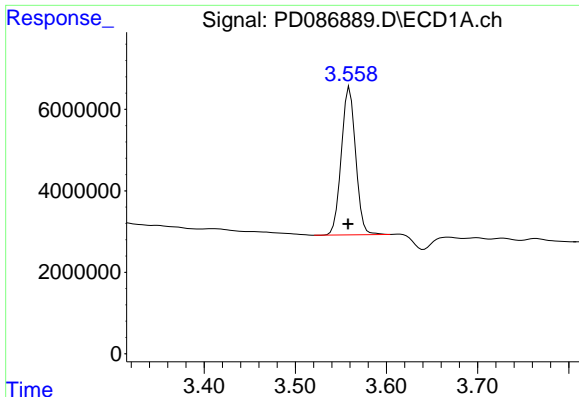
(f)=RT Delta > 1/2 Window (#)=Amounts differ by > 25% (m)=manual int.

Data Path : Z:\pestpcbsrv\HPCHEM1\ECD_D\Data\PD112224\
 Data File : PD086889.D
 Signal(s) : Signal #1: ECD1A.ch Signal #2: ECD2B.ch
 Acq On : 21 Nov 2024 11:19
 Operator : AR\AJ
 Sample : P4875-02
 Misc :
 ALS Vial : 9 Sample Multiplier: 1

Integration File signal 1: autoint1.e
 Integration File signal 2: autoint2.e
 Quant Time: Nov 22 00:35:27 2024
 Quant Method : Z:\pestpcbsrv\HPCHEM1\ECD_D\Method\PD112024CLP.M
 Quant Title : GC Extractables
 QLast Update : Wed Nov 20 02:52:29 2024
 Response via : Initial Calibration
 Integrator: ChemStation

Volume Inj. : 1 µl
 Signal #1 Phase : ZB-MR1 Signal #2 Phase: ZB-MR2
 Signal #1 Info : 30M x 0.32mm x0.5 Signal #2 Info : 30M x 0.32mm x 0.25µm

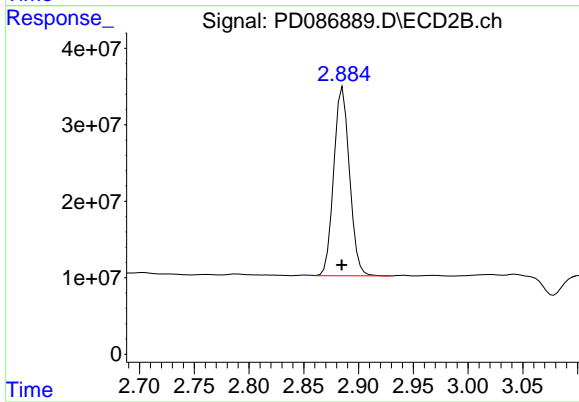




#1 Tetrachloro-m-xylene

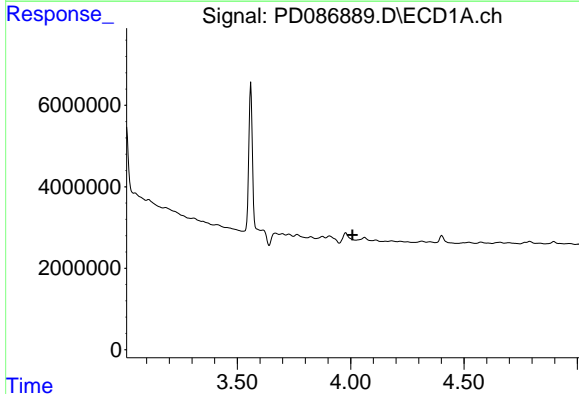
R.T.: 3.560 min
 Delta R.T.: 0.002 min
 Response: 39525310
 Conc: 21.49 ng/ml

Instrument :
 ECD_D
 ClientSampleId :



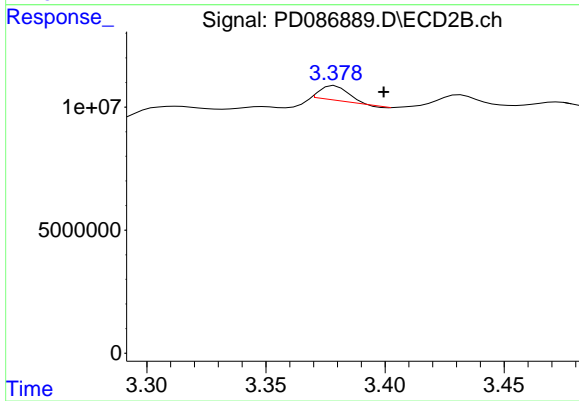
#1 Tetrachloro-m-xylene

R.T.: 2.886 min
 Delta R.T.: 0.000 min
 Response: 246845955
 Conc: 21.39 ng/ml



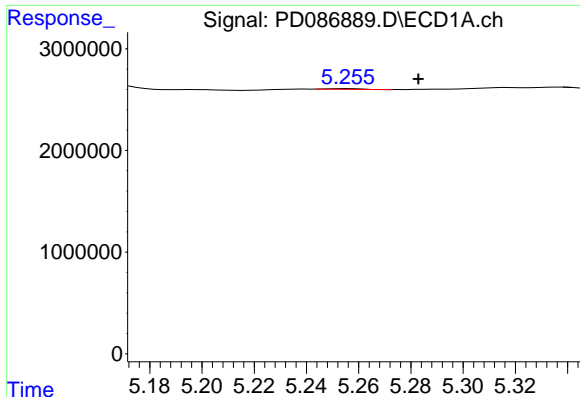
#2 alpha-BHC

R.T.: 0.000 min
 Exp R.T. : 4.008 min
 Response: 0
 Conc: N.D.



#2 alpha-BHC

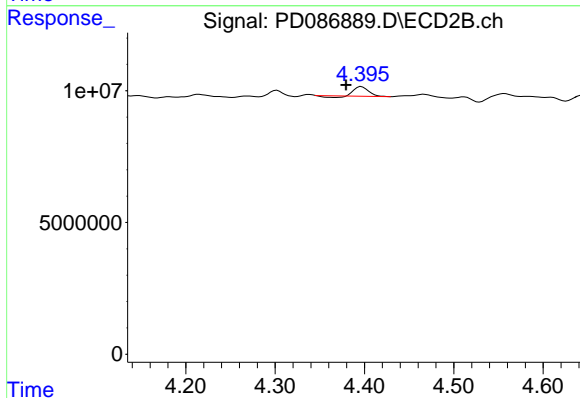
R.T.: 3.379 min
 Delta R.T.: -0.020 min
 Response: 4646946
 Conc: 0.26 ng/ml



#5 Aldrin

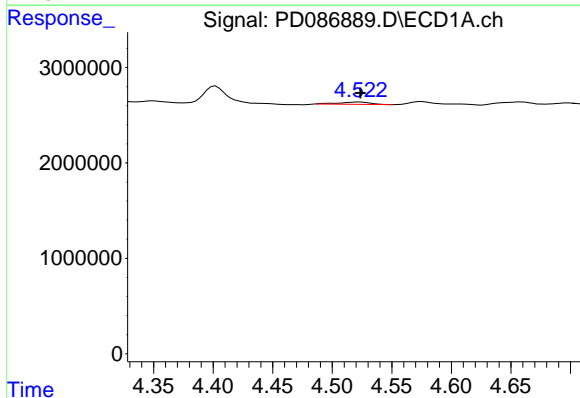
R.T.: 5.256 min
 Delta R.T.: -0.027 min
 Response: 57795
 Conc: N.D.

Instrument :
 ECD_D
 ClientSampleId :



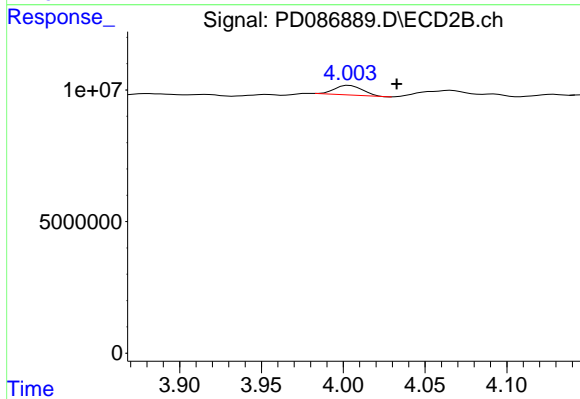
#5 Aldrin

R.T.: 4.397 min
 Delta R.T.: 0.017 min
 Response: 3548651
 Conc: 0.21 ng/ml



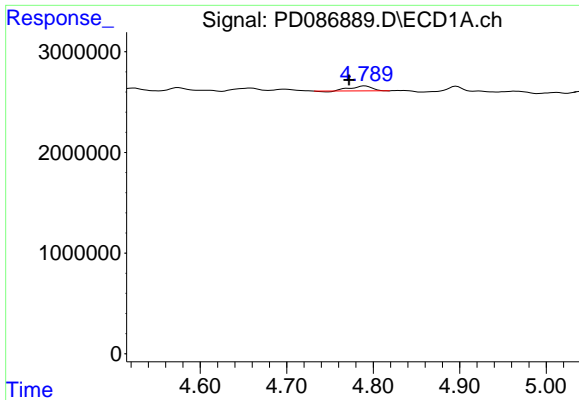
#6 beta-BHC

R.T.: 4.523 min
 Delta R.T.: 0.000 min
 Response: 427001
 Conc: 0.27 ng/ml



#6 beta-BHC

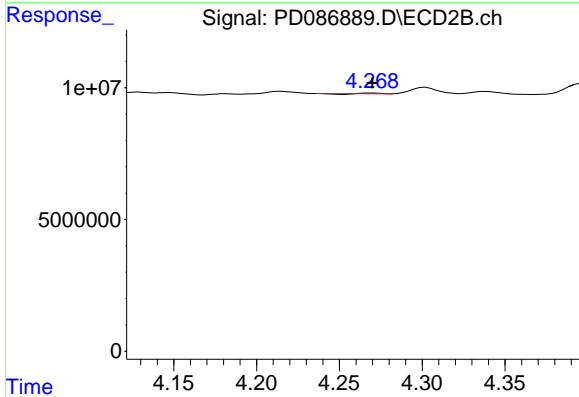
R.T.: 4.004 min
 Delta R.T.: -0.029 min
 Response: 4370387
 Conc: 0.55 ng/ml



#7 delta-BHC

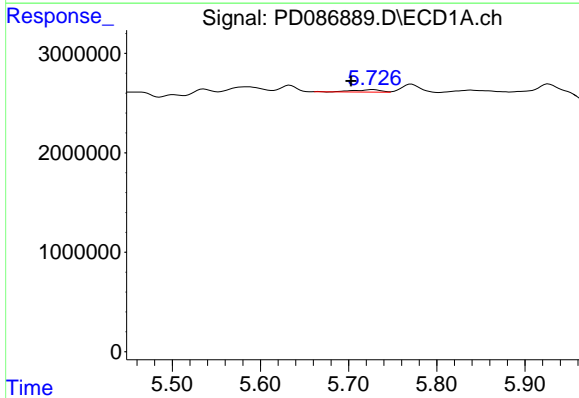
R.T.: 4.790 min
 Delta R.T.: 0.018 min
 Response: 809084
 Conc: 0.22 ng/ml

Instrument :
 ECD_D
 ClientSampleId :



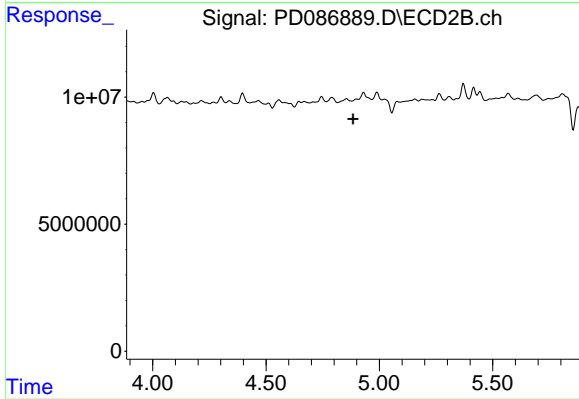
#7 delta-BHC

R.T.: 4.269 min
 Delta R.T.: -0.001 min
 Response: 54992
 Conc: N.D.



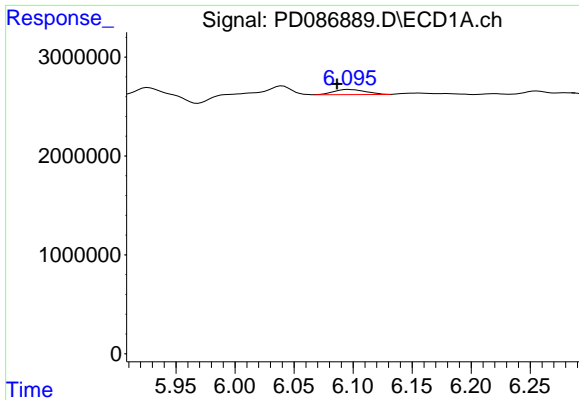
#8 Heptachlor epoxide

R.T.: 5.728 min
 Delta R.T.: 0.025 min
 Response: 508159
 Conc: 0.16 ng/ml



#8 Heptachlor epoxide

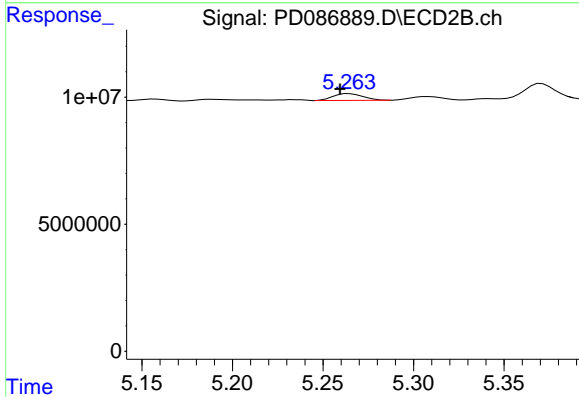
R.T.: 4.899 min
 Delta R.T.: 0.015 min
 Response: -955212
 Conc: N.D.



#9 Endosulfan I

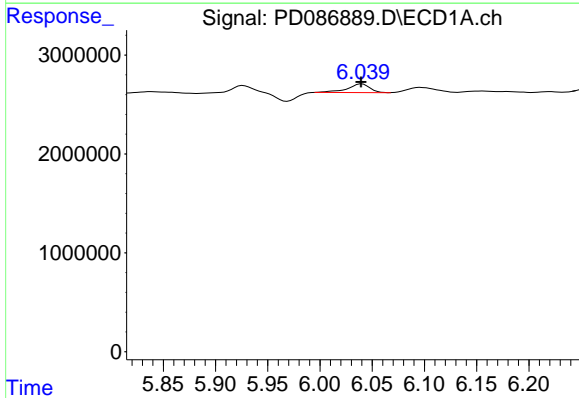
R.T.: 6.097 min
 Delta R.T.: 0.010 min
 Response: 958672
 Conc: 0.32 ng/ml

Instrument :
 ECD_D
 ClientSampleId :



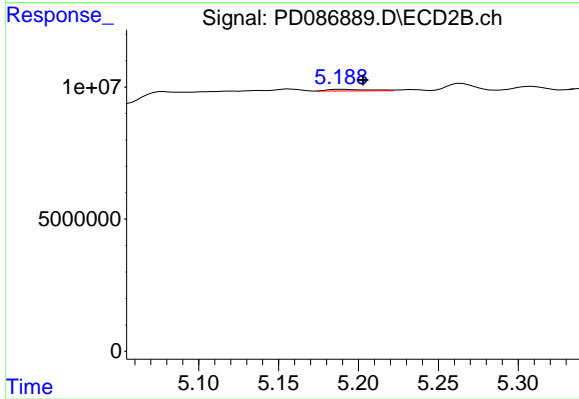
#9 Endosulfan I

R.T.: 5.265 min
 Delta R.T.: 0.005 min
 Response: 3058655
 Conc: 0.21 ng/ml



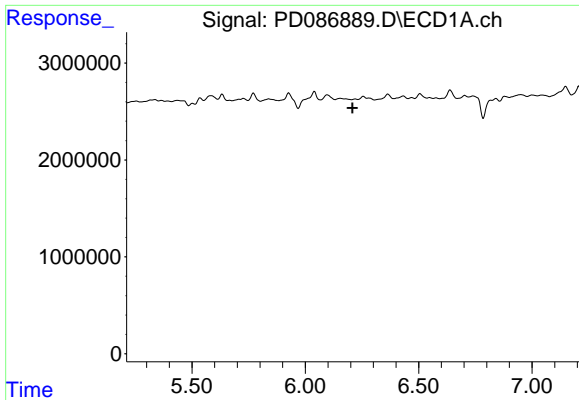
#11 cis-Chlordane

R.T.: 6.040 min
 Delta R.T.: 0.000 min
 Response: 1291267
 Conc: 0.40 ng/ml



#11 cis-Chlordane

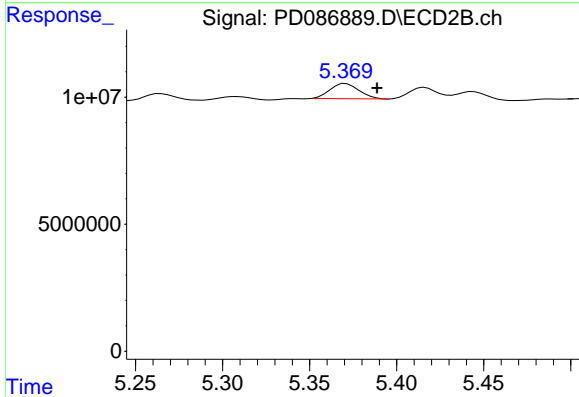
R.T.: 5.189 min
 Delta R.T.: -0.014 min
 Response: 1199781
 Conc: N.D.



#12 4,4'-DDE

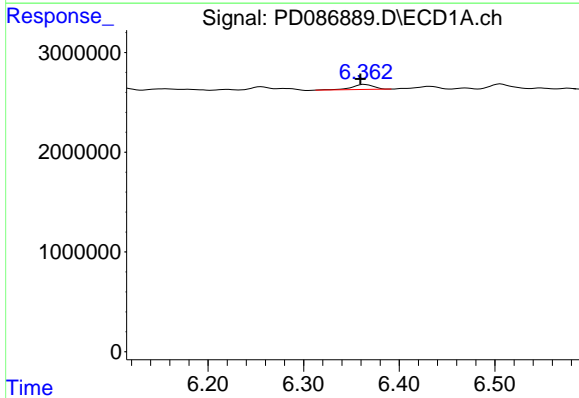
R.T.: 6.220 min
 Delta R.T.: 0.012 min
 Response: -7668
 Conc: N.D.

Instrument :
 ECD_D
 ClientSampleId :



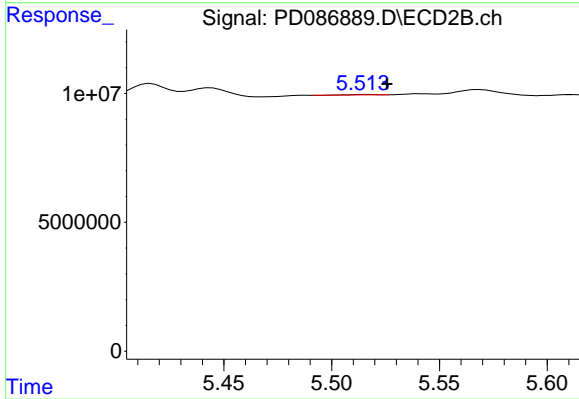
#12 4,4'-DDE

R.T.: 5.371 min
 Delta R.T.: -0.018 min
 Response: 6883713
 Conc: 0.45 ng/ml



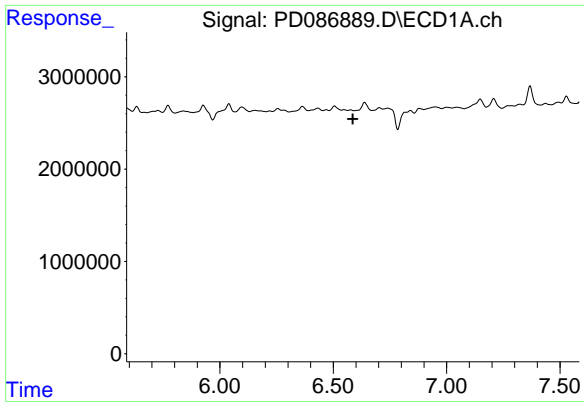
#13 Dieldrin

R.T.: 6.364 min
 Delta R.T.: 0.005 min
 Response: 796877
 Conc: 0.24 ng/ml



#13 Dieldrin

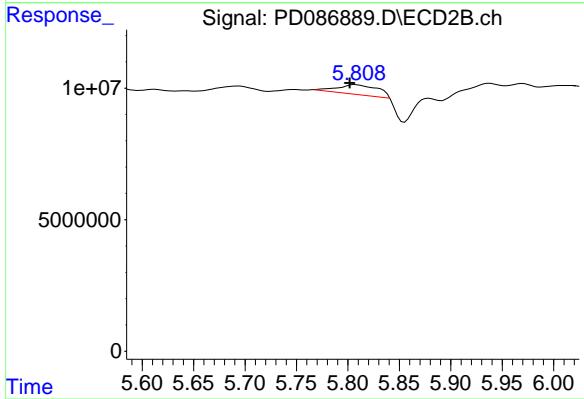
R.T.: 5.517 min
 Delta R.T.: -0.009 min
 Response: 96953
 Conc: N.D.



#14 Endrin

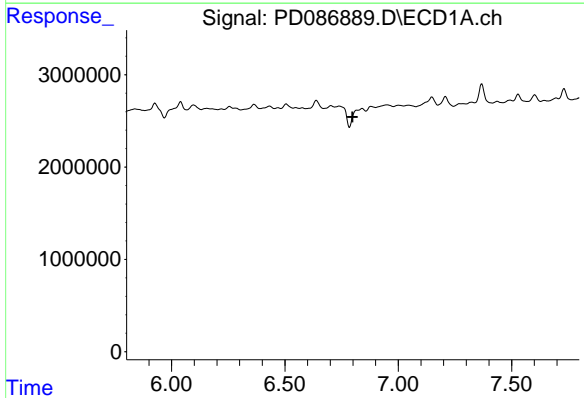
R.T.: 0.000 min
 Exp R.T.: 6.587 min
 Response: 0
 Conc: N.D.

Instrument :
 ECD_D
 ClientSampleId :



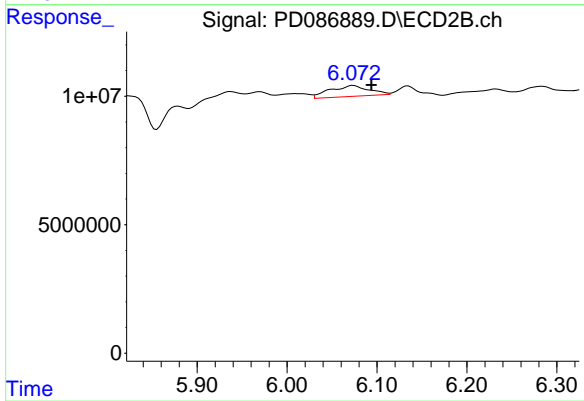
#14 Endrin

R.T.: 5.807 min
 Delta R.T.: 0.005 min
 Response: 9924241
 Conc: 0.72 ng/ml



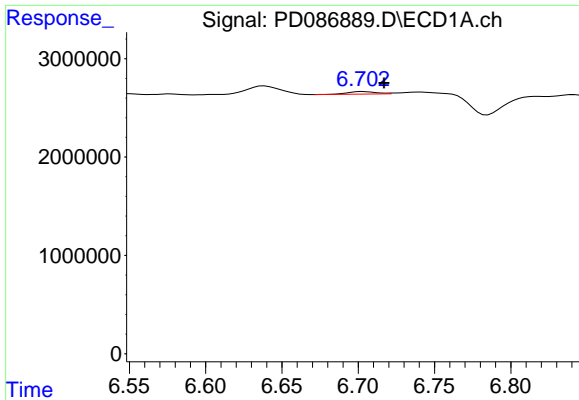
#15 Endosulfan II

R.T.: 6.841 min
 Delta R.T.: 0.043 min
 Response: -2485511
 Conc: N.D.



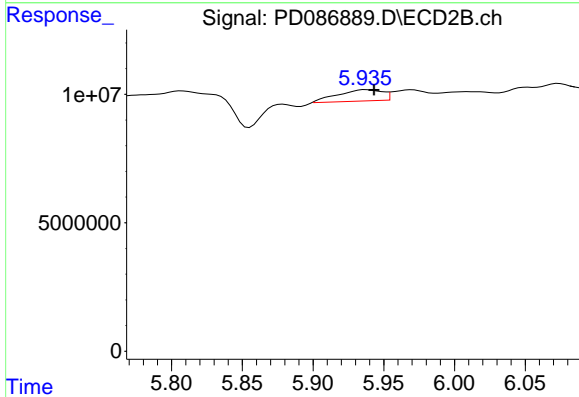
#15 Endosulfan II

R.T.: 6.074 min
 Delta R.T.: -0.020 min
 Response: 12844692
 Conc: 0.92 ng/ml

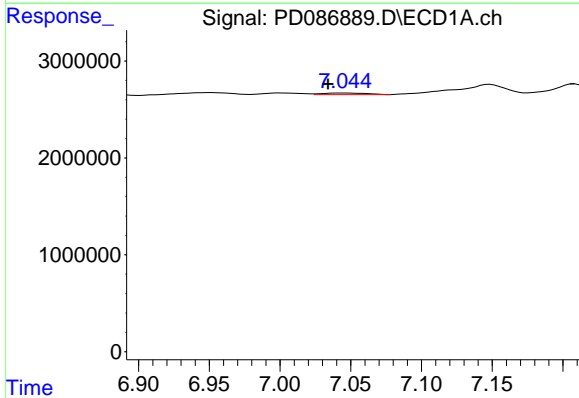


#16 4,4'-DDD
 R.T.: 6.704 min
 Delta R.T.: -0.013 min
 Response: 332358
 Conc: 0.14 ng/ml

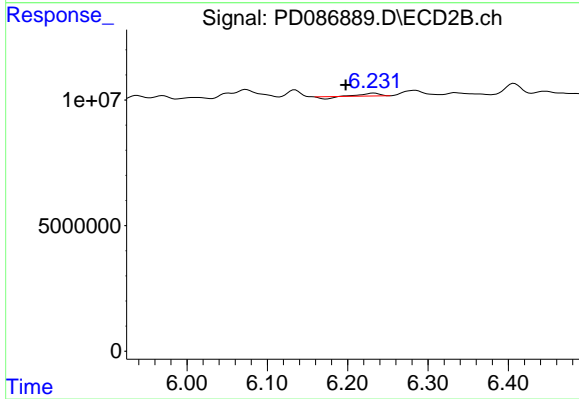
Instrument :
 ECD_D
 ClientSampleId :



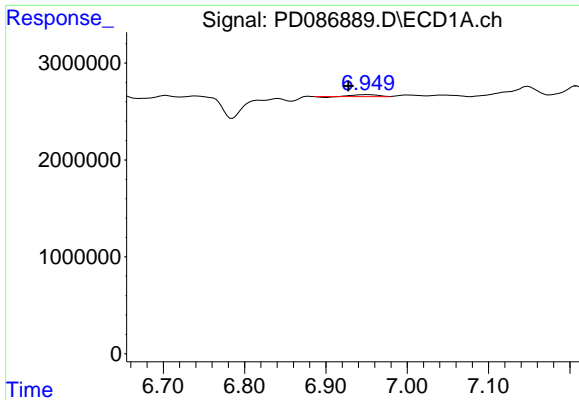
#16 4,4'-DDD
 R.T.: 5.938 min
 Delta R.T.: -0.005 min
 Response: 9680136
 Conc: 0.80 ng/ml



#17 4,4'-DDT
 R.T.: 7.045 min
 Delta R.T.: 0.012 min
 Response: 343233
 Conc: 0.14 ng/ml



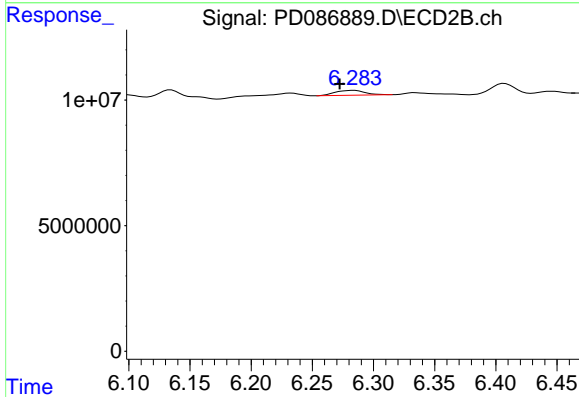
#17 4,4'-DDT
 R.T.: 6.232 min
 Delta R.T.: 0.035 min
 Response: 966863
 Conc: N.D.



#18 Endrin aldehyde

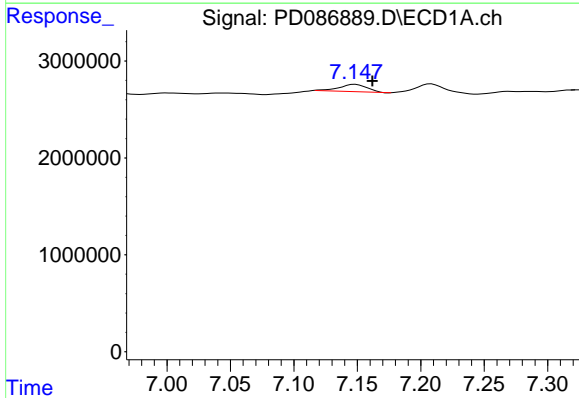
R.T.: 6.950 min
 Delta R.T.: 0.023 min
 Response: 365283
 Conc: 0.17 ng/ml

Instrument :
 ECD_D
 ClientSampleId :



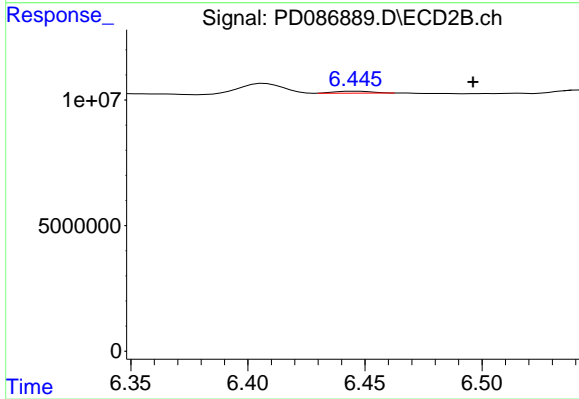
#18 Endrin aldehyde

R.T.: 6.284 min
 Delta R.T.: 0.011 min
 Response: 3303981
 Conc: 0.31 ng/ml



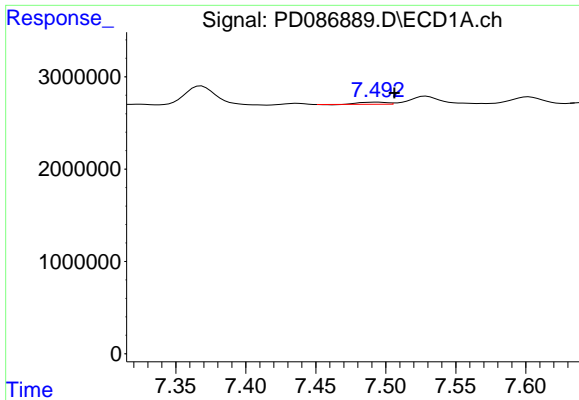
#19 Endosulfan Sulfate

R.T.: 7.148 min
 Delta R.T.: -0.014 min
 Response: 1140729
 Conc: 0.42 ng/ml



#19 Endosulfan Sulfate

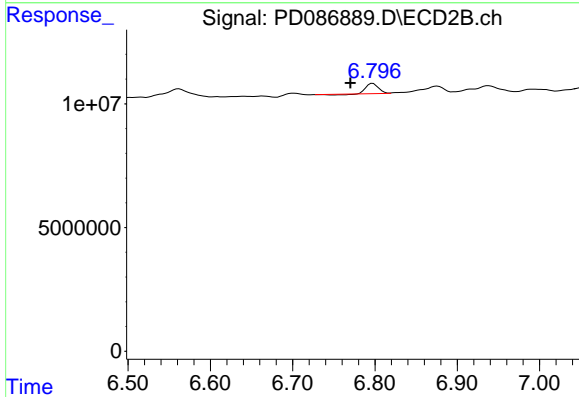
R.T.: 6.446 min
 Delta R.T.: -0.050 min
 Response: 821603
 Conc: N.D.



#20 Methoxychlor

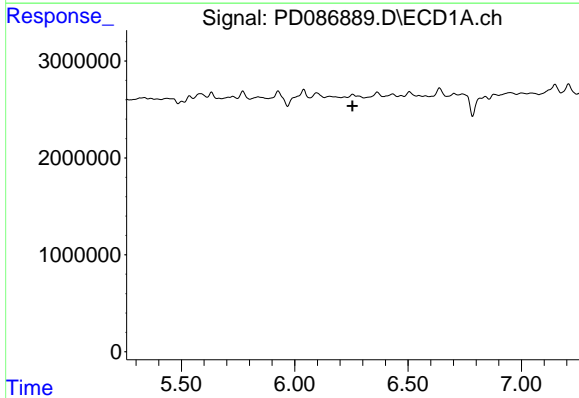
R.T.: 7.493 min
 Delta R.T.: -0.013 min
 Response: 298662
 Conc: 0.22 ng/ml

Instrument :
 ECD_D
 ClientSampleId :



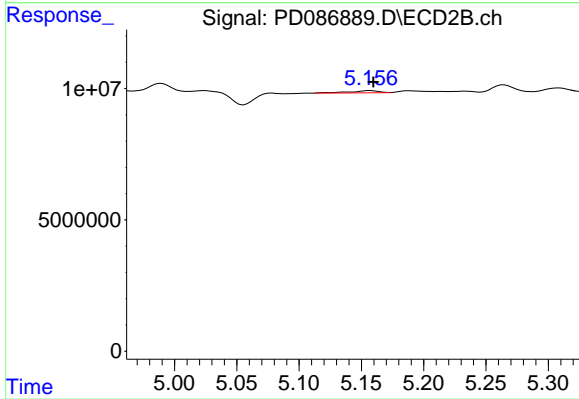
#20 Methoxychlor

R.T.: 6.797 min
 Delta R.T.: 0.027 min
 Response: 3928174
 Conc: 0.68 ng/ml



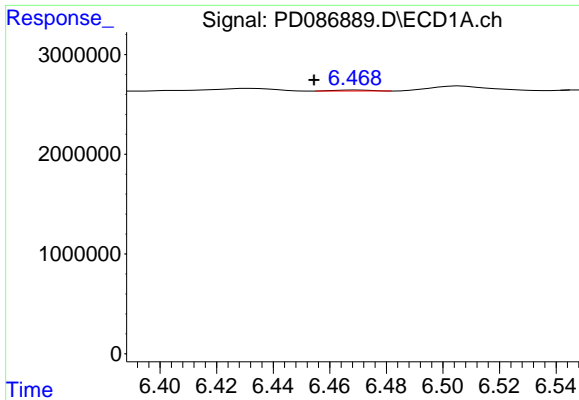
#22 Toxaphene-1

R.T.: 6.220 min
 Delta R.T.: -0.035 min
 Response: -7668
 Conc: N.D.



#22 Toxaphene-1

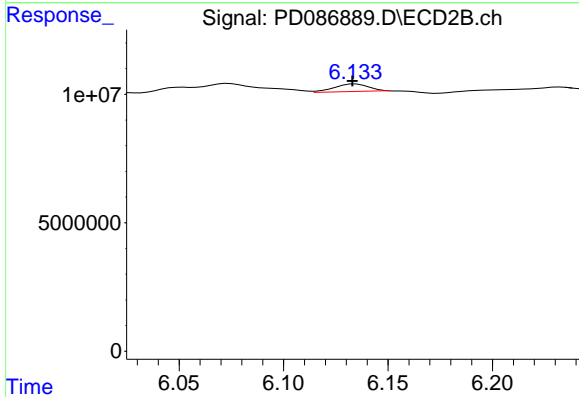
R.T.: 5.157 min
 Delta R.T.: -0.003 min
 Response: 1323567
 Conc: 16.22 ng/ml



#23 Toxaphene-2

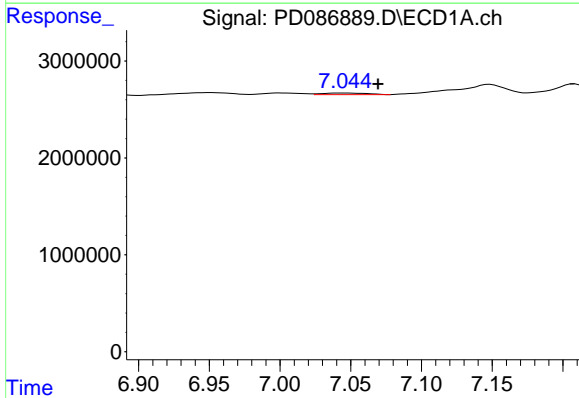
R.T.: 6.469 min
 Delta R.T.: 0.015 min
 Response: 83046
 Conc: 2.93 ng/ml

Instrument :
 ECD_D
 ClientSampleId :



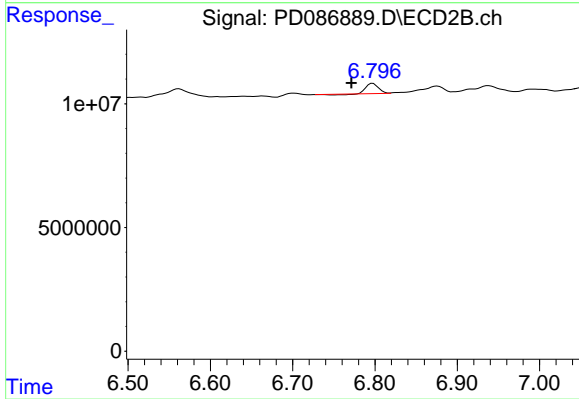
#23 Toxaphene-2

R.T.: 6.134 min
 Delta R.T.: 0.001 min
 Response: 3738520
 Conc: 41.70 ng/ml



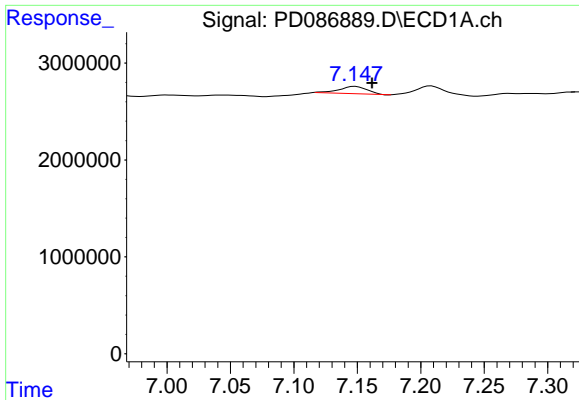
#24 Toxaphene-3

R.T.: 7.045 min
 Delta R.T.: -0.024 min
 Response: 343233
 Conc: 4.24 ng/ml



#24 Toxaphene-3

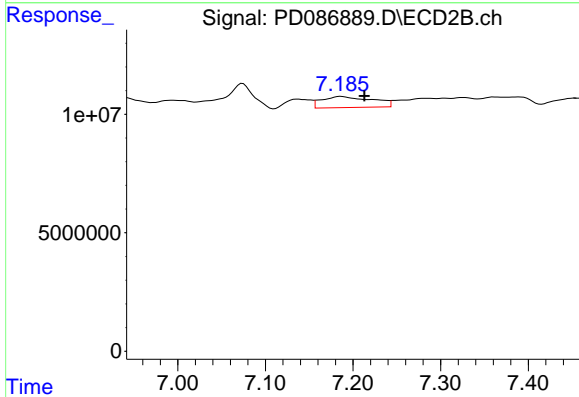
R.T.: 6.797 min
 Delta R.T.: 0.026 min
 Response: 3928174
 Conc: 13.30 ng/ml



#25 Toxaphene-4

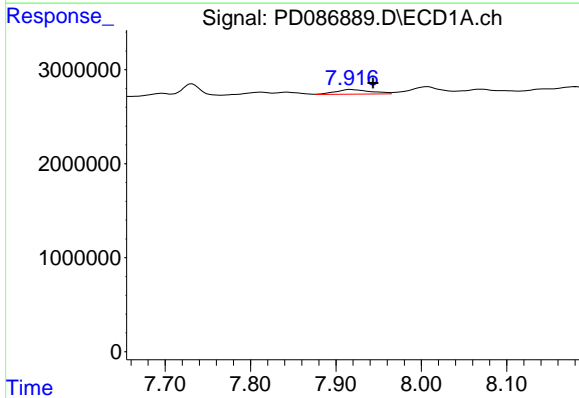
R.T.: 7.148 min
 Delta R.T.: -0.013 min
 Response: 1140729
 Conc: 18.93 ng/ml

Instrument :
 ECD_D
 ClientSampleId :



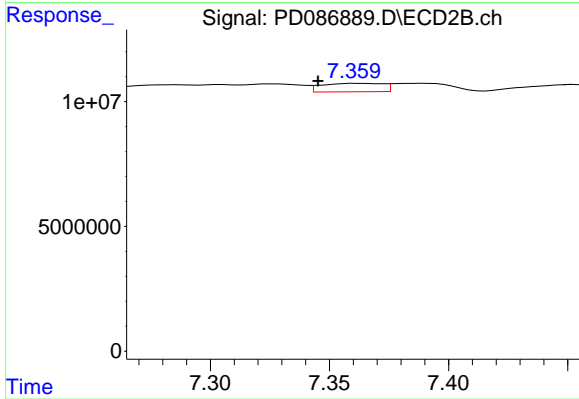
#25 Toxaphene-4

R.T.: 7.186 min
 Delta R.T.: -0.027 min
 Response: 18755784
 Conc: 90.73 ng/ml



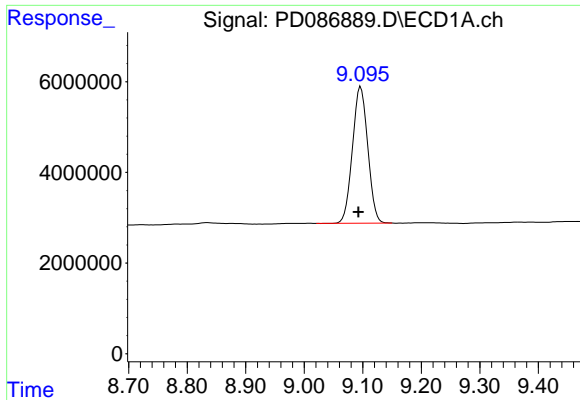
#26 Toxaphene-5

R.T.: 7.918 min
 Delta R.T.: -0.025 min
 Response: 1417866
 Conc: 32.14 ng/ml



#26 Toxaphene-5

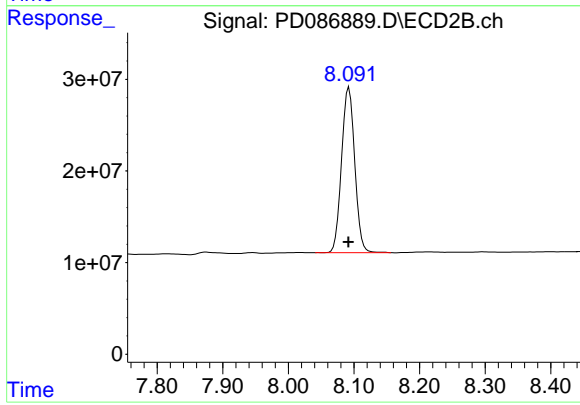
R.T.: 7.362 min
 Delta R.T.: 0.017 min
 Response: 6077590
 Conc: 38.72 ng/ml



#27 Decachlorobiphenyl

R.T.: 9.097 min
Delta R.T.: 0.004 min
Response: 54726057
Conc: 20.55 ng/ml

Instrument :
ECD_D
ClientSampleId :



#27 Decachlorobiphenyl

R.T.: 8.092 min
Delta R.T.: 0.001 min
Response: 252112178
Conc: 19.78 ng/ml