

Data Path : Z:\pestpcbsrv\HPCHEM1\ECD_D\Data\PD112320\
 Data File : PD060226.D
 Signal(s) : Signal #1: ECD1A.ch Signal #2: ECD2B.ch
 Acq On : 23 Nov 2020 10:09
 Operator : DD\AJ
 Sample : L4751-11
 Misc :
 ALS Vial : 8 Sample Multiplier: 1

Instrument :
 ECD_D
 ClientSampled :
 C0B82

Integration File signal 1: autoint1.e
 Integration File signal 2: autoint2.e
 Quant Time: Nov 24 00:20:46 2020
 Quant Method : Z:\pestpcbsrv\HPCHEM1\ECD_D\Method\PD110320CLP.M
 Quant Title : GC Extractables
 QLast Update : Wed Nov 04 04:05:33 2020
 Response via : Initial Calibration
 Integrator: ChemStation

Volume Inj. : 1 µl
 Signal #1 Phase : ZB-MR2 Signal #2 Phase: ZB-MR1
 Signal #1 Info : 30M x 0.32mm x0.2 Signal #2 Info : 30M x 0.32mm x 0.50µm

Compound	RT#1	RT#2	Resp#1	Resp#2	ng/ml	ng/ml

System Monitoring Compounds						
1) SA Tetrachlo...	3.505	4.024	6088077	20490454	7.104	6.874
27) SA Decachlor...	8.302	9.109	8388986	18541157	10.096	7.537 #
Target Compounds						
4) MA Heptachlor	4.540	5.212	14659550	60765360	12.490	15.327
6) B beta-BHC	4.447f	4.907f	2051089	-1228732	3.871	N.D. #
8) B Heptachlo...	5.237	5.905	12158137	82068170	11.510	24.917 #
9) A Endosulfan I	5.596	6.259	765369	5501264	0.752	1.716 #
10) B trans-Chl...	5.467	6.139	81456479	334.7E6	76.693	97.429 #
11) B cis-Chlor...	5.526	6.214	55826301	336.2E6	52.773	97.927 #
12) B 4,4'-DDE	5.691	6.366	2132120	15521945	2.086	4.800 #
13) MA Dieldrin	5.885f	0.000	2155441	0	1.978	N.D. #
14) MA Endrin	6.032f	6.676f	545060	4222777	0.604	1.508 #
15) B Endosulfa...	6.370	6.930	9907353	-183656	10.987	N.D. #
16) A 4,4'-DDD	6.147f	6.876	8986327	6441171	10.161	2.401 #
17) MA 4,4'-DDT	6.452	7.136	1330281	5018736	1.480	1.844
19) B Endosulfa...	6.676f	0.000	469745	0	0.538	N.D. #
20) A Methoxychlor	6.988	0.000	676014	0	1.588	N.D. #
21) B Endrin ke...	7.284f	7.779	2069961	3949707	2.081	1.354 #
22) Toxaphene-1	5.769	6.437	1081095	25024988	165.356	1635.865 #
23) Toxaphene-2	5.952	6.676	1002708	4222777	158.837	224.686 #
24) Toxaphene-3	6.278	7.136	8525471	5018736	1207.556	180.964 #
25) Toxaphene-4	6.370	7.136	9907353	5018736	617.918	66.177 #
26) Toxaphene-5	7.088	7.731	1511898	-138741	89.392	N.D. #

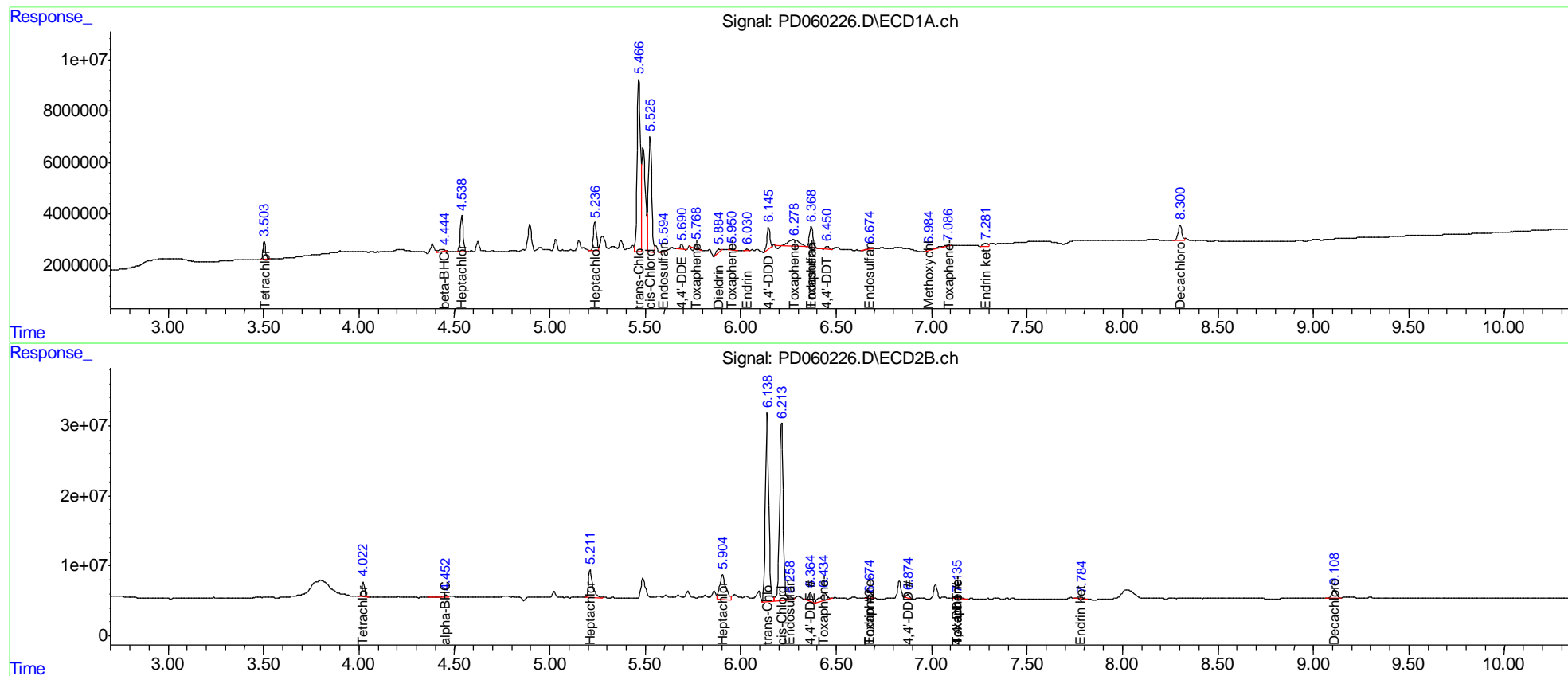
(f)=RT Delta > 1/2 Window (#)=Amounts differ by > 25% (m)=manual int.

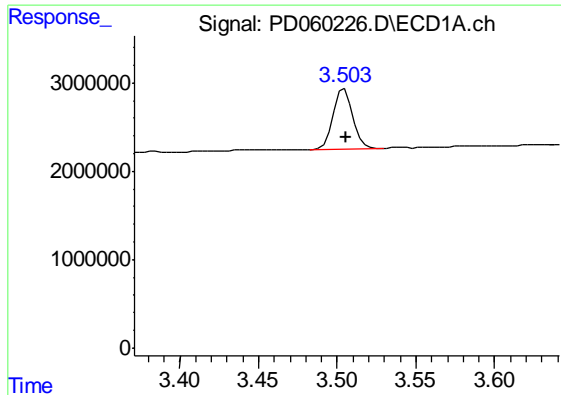
Data Path : Z:\pestpcbsrv\HPCHEM1\ECD_D\Data\PD112320\
 Data File : PD060226.D
 Signal(s) : Signal #1: ECD1A.ch Signal #2: ECD2B.ch
 Acq On : 23 Nov 2020 10:09
 Operator : DD\AJ
 Sample : L4751-11
 Misc :
 ALS Vial : 8 Sample Multiplier: 1

Instrument :
 ECD_D
 Client Sample Id :
 C0B82

Integration File signal 1: autoint1.e
 Integration File signal 2: autoint2.e
 Quant Time: Nov 24 00:20:46 2020
 Quant Method : Z:\pestpcbsrv\HPCHEM1\ECD_D\Method\PD110320CLP.M
 Quant Title : GC Extractables
 QLast Update : Wed Nov 04 04:05:33 2020
 Response via : Initial Calibration
 Integrator: ChemStation

Volume Inj. : 1 µl
 Signal #1 Phase : ZB-MR2 Signal #2 Phase: ZB-MR1
 Signal #1 Info : 30M x 0.32mm x0.2 Signal #2 Info : 30M x 0.32mm x 0.50µm

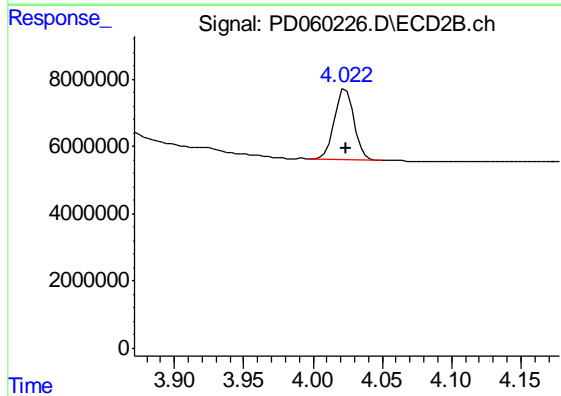




#1 Tetrachloro-m-xylene

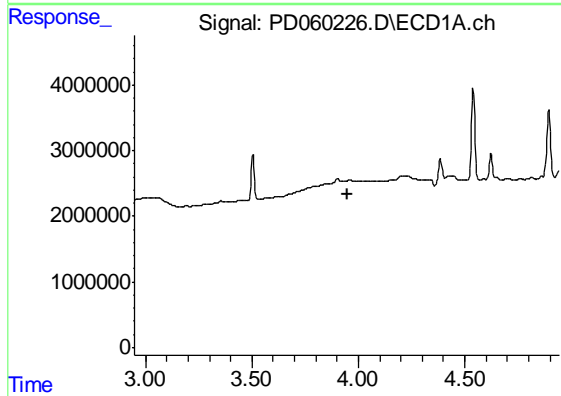
R.T.: 3.505 min
 Delta R.T.: -0.001 min
 Response: 6088077
 Conc: 7.10 ng/ml

Instrument :
 ECD_D
 ClientSampleId :
 C0B82



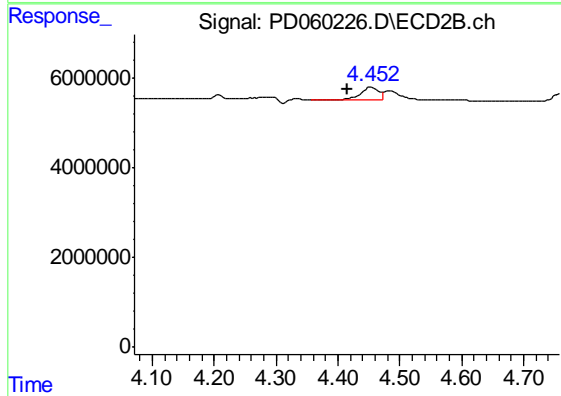
#1 Tetrachloro-m-xylene

R.T.: 4.024 min
 Delta R.T.: 0.000 min
 Response: 20490454
 Conc: 6.87 ng/ml



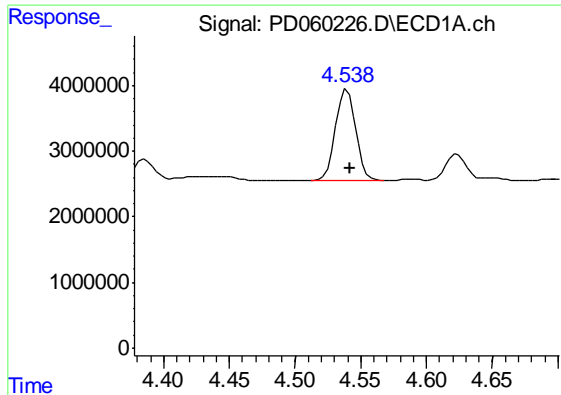
#2 alpha-BHC

R.T.: 3.902 min
 Delta R.T.: -0.046 min
 Response: -1889353
 Conc: N.D.



#2 alpha-BHC

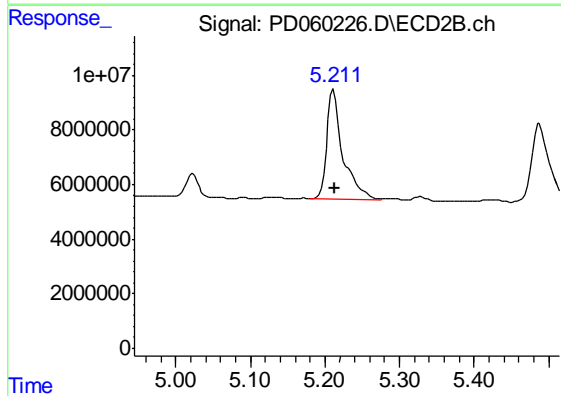
R.T.: 4.454 min
 Delta R.T.: 0.038 min
 Response: 6168659
 Conc: 1.38 ng/ml



#4 Heptachlor

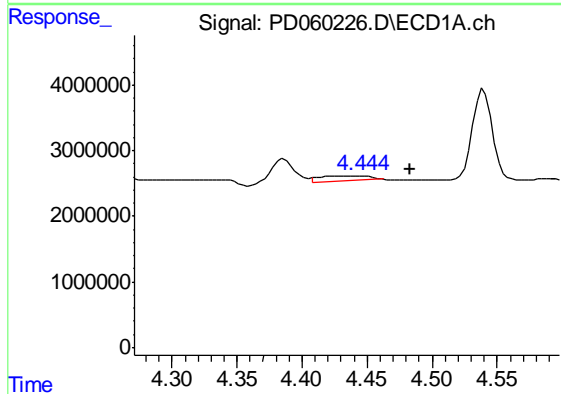
R.T.: 4.540 min
 Delta R.T.: -0.002 min
 Response: 14659550
 Conc: 12.49 ng/ml

Instrument :
 ECD_D
 ClientSampleId :
 C0B82



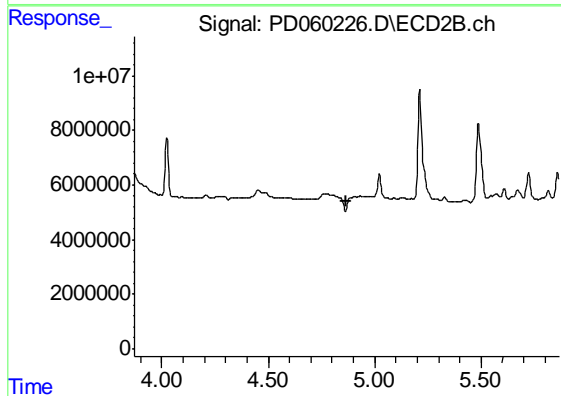
#4 Heptachlor

R.T.: 5.212 min
 Delta R.T.: 0.000 min
 Response: 60765360
 Conc: 15.33 ng/ml



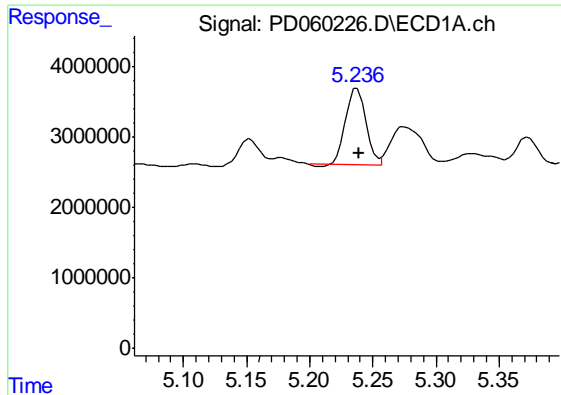
#6 beta-BHC

R.T.: 4.447 min
 Delta R.T.: -0.037 min
 Response: 2051089
 Conc: 3.87 ng/ml



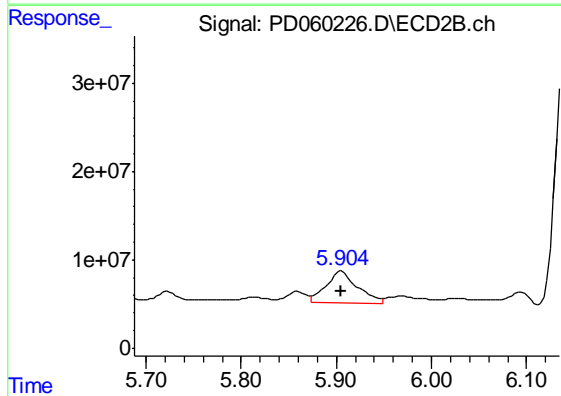
#6 beta-BHC

R.T.: 4.907 min
 Delta R.T.: 0.039 min
 Response: -1228732
 Conc: N.D.

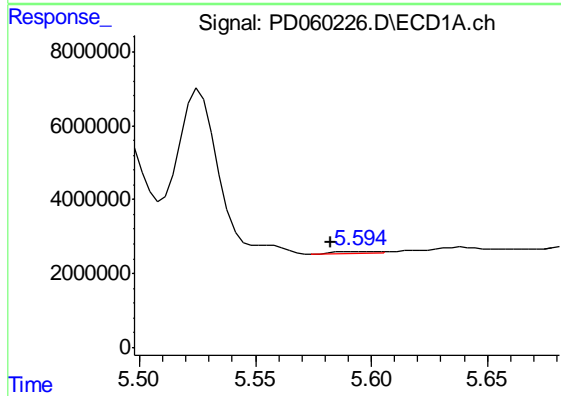


#8 Heptachlor epoxide
 R.T.: 5.237 min
 Delta R.T.: -0.002 min
 Response: 12158137
 Conc: 11.51 ng/ml

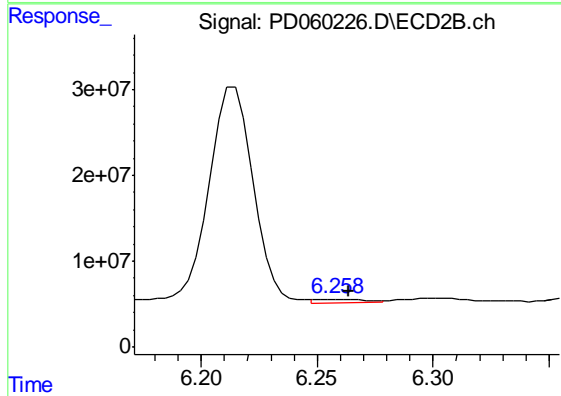
Instrument :
 ECD_D
 ClientSampleId :
 C0B82



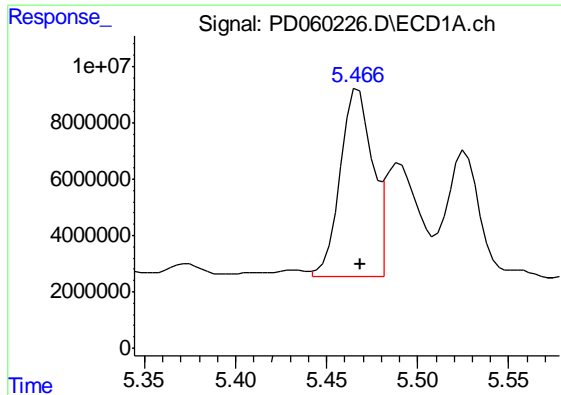
#8 Heptachlor epoxide
 R.T.: 5.905 min
 Delta R.T.: 0.000 min
 Response: 82068170
 Conc: 24.92 ng/ml



#9 Endosulfan I
 R.T.: 5.596 min
 Delta R.T.: 0.014 min
 Response: 765369
 Conc: 0.75 ng/ml



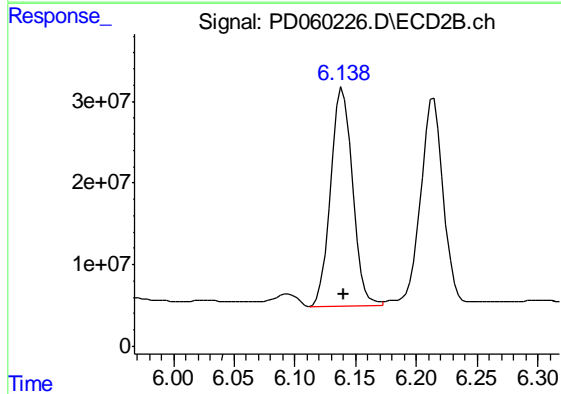
#9 Endosulfan I
 R.T.: 6.259 min
 Delta R.T.: -0.005 min
 Response: 5501264
 Conc: 1.72 ng/ml



#10 trans-Chlordane

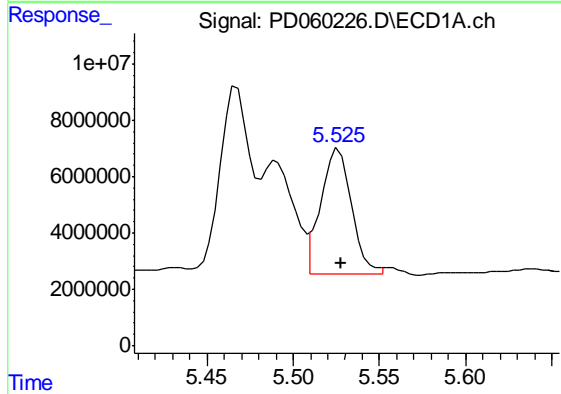
R.T.: 5.467 min
Delta R.T.: -0.001 min
Response: 81456479
Conc: 76.69 ng/ml

Instrument :
ECD_D
ClientSampleId :
C0B82



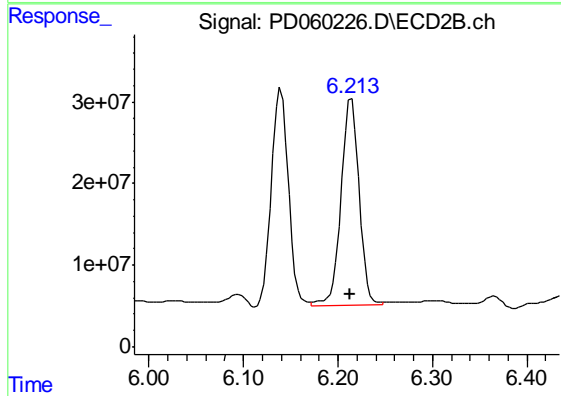
#10 trans-Chlordane

R.T.: 6.139 min
Delta R.T.: 0.000 min
Response: 334739602
Conc: 97.43 ng/ml



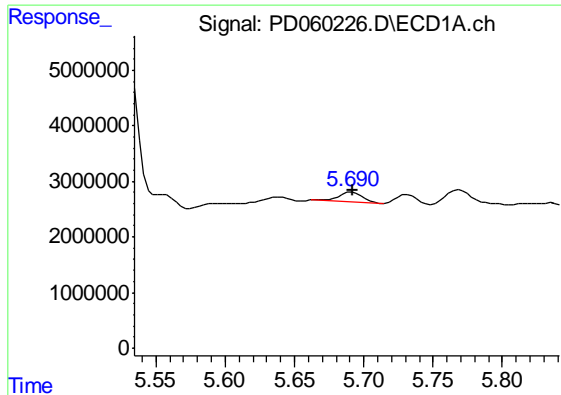
#11 cis-Chlordane

R.T.: 5.526 min
Delta R.T.: -0.002 min
Response: 55826301
Conc: 52.77 ng/ml



#11 cis-Chlordane

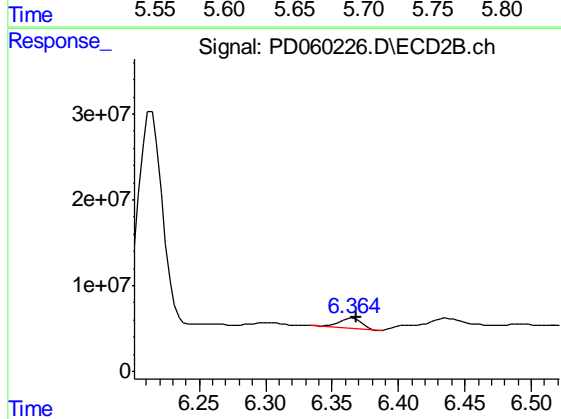
R.T.: 6.214 min
Delta R.T.: 0.001 min
Response: 336223744
Conc: 97.93 ng/ml



#12 4,4'-DDE

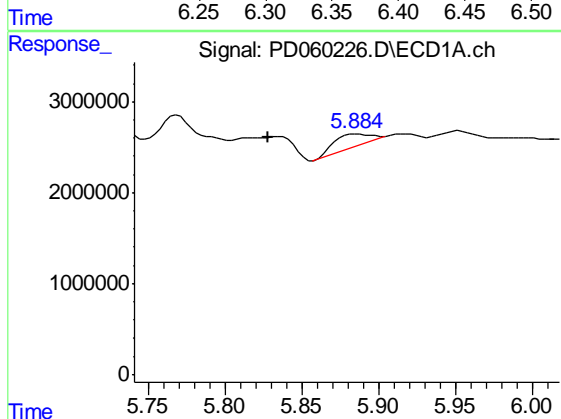
R.T.: 5.691 min
 Delta R.T.: 0.000 min
 Response: 2132120
 Conc: 2.09 ng/ml

Instrument :
 ECD_D
 ClientSampled :
 C0B82



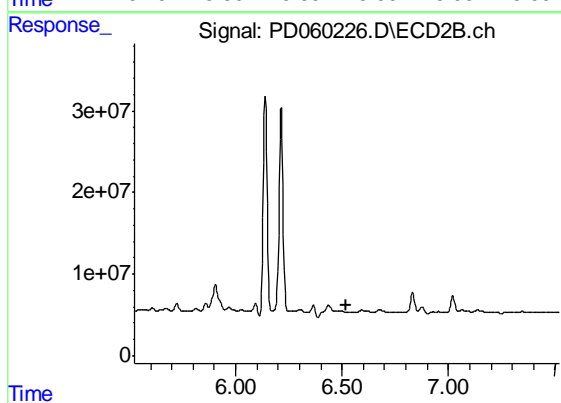
#12 4,4'-DDE

R.T.: 6.366 min
 Delta R.T.: -0.002 min
 Response: 15521945
 Conc: 4.80 ng/ml



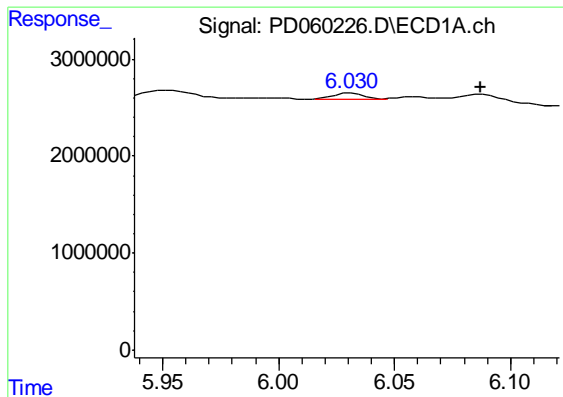
#13 Dieldrin

R.T.: 5.885 min
 Delta R.T.: 0.057 min
 Response: 2155441
 Conc: 1.98 ng/ml



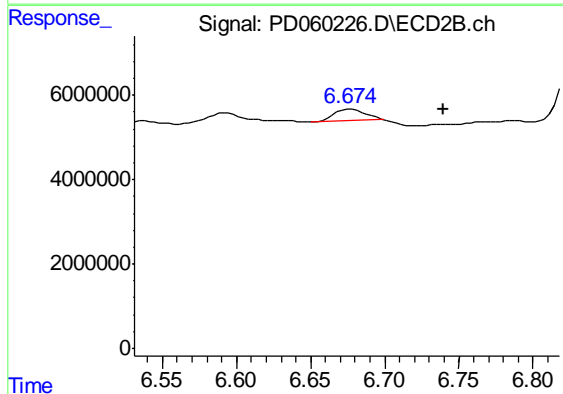
#13 Dieldrin

R.T.: 0.000 min
 Exp R.T. : 6.521 min
 Response: 0
 Conc: N.D.

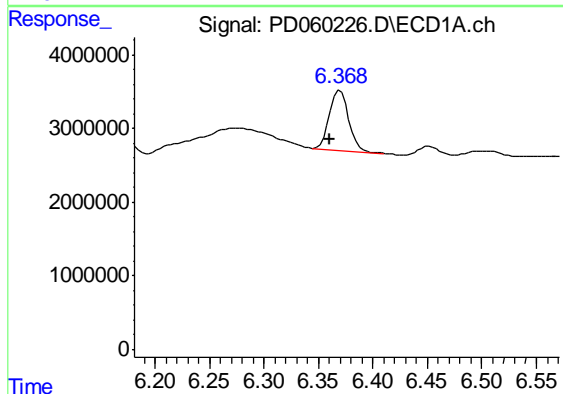


#14 Endrin
 R.T.: 6.032 min
 Delta R.T.: -0.055 min
 Response: 545060
 Conc: 0.60 ng/ml

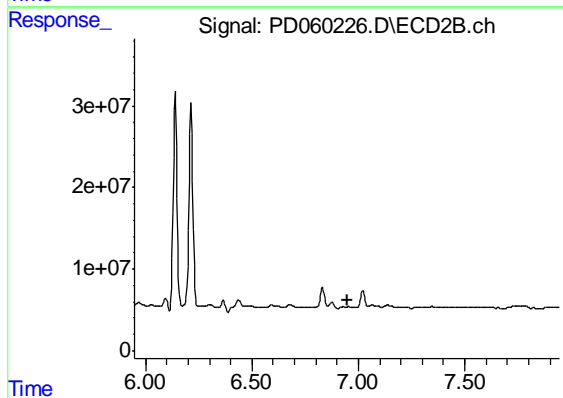
Instrument :
 ECD_D
 ClientSampleId :
 C0B82



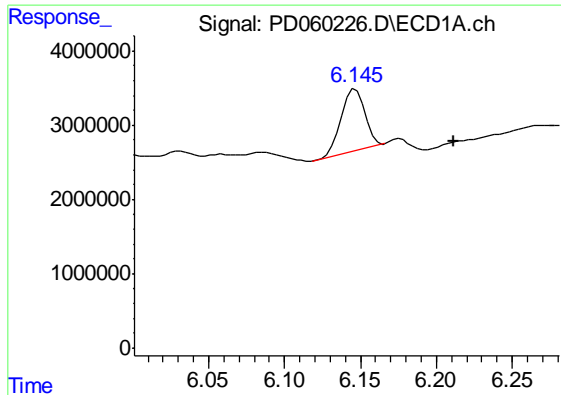
#14 Endrin
 R.T.: 6.676 min
 Delta R.T.: -0.064 min
 Response: 4222777
 Conc: 1.51 ng/ml



#15 Endosulfan II
 R.T.: 6.370 min
 Delta R.T.: 0.010 min
 Response: 9907353
 Conc: 10.99 ng/ml

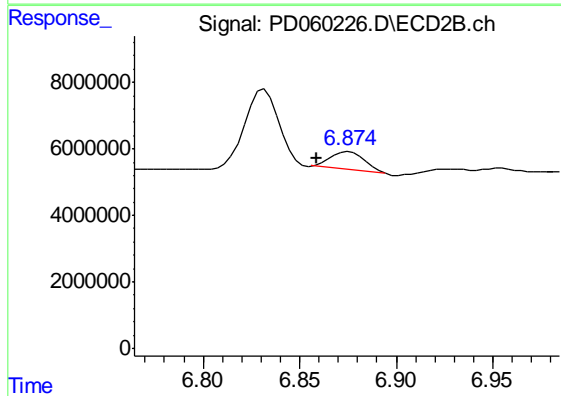


#15 Endosulfan II
 R.T.: 6.930 min
 Delta R.T.: -0.018 min
 Response: -183656
 Conc: N.D.

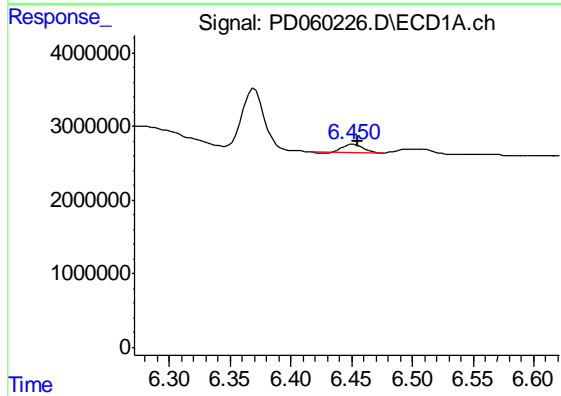


#16 4,4'-DDD
 R.T.: 6.147 min
 Delta R.T.: -0.065 min
 Response: 8986327
 Conc: 10.16 ng/ml

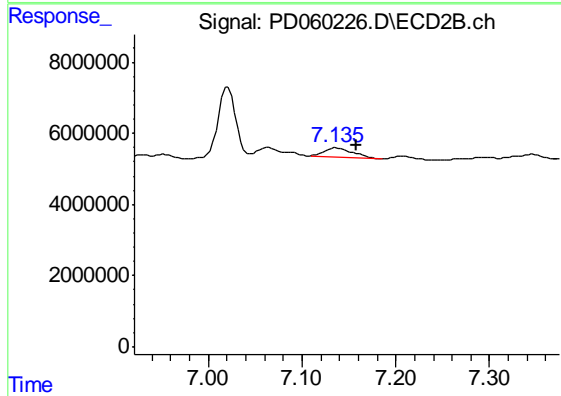
Instrument :
 ECD_D
 ClientSampled :
 C0B82



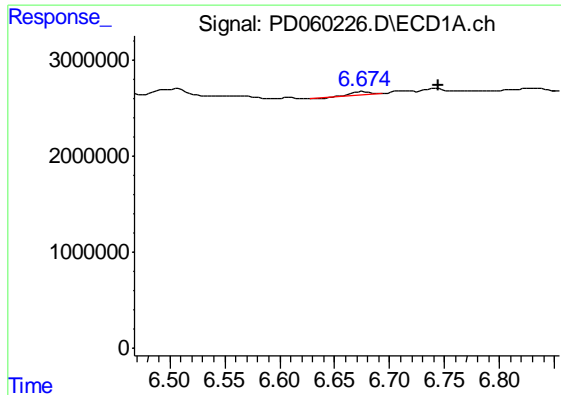
#16 4,4'-DDD
 R.T.: 6.876 min
 Delta R.T.: 0.017 min
 Response: 6441171
 Conc: 2.40 ng/ml



#17 4,4'-DDT
 R.T.: 6.452 min
 Delta R.T.: -0.004 min
 Response: 1330281
 Conc: 1.48 ng/ml



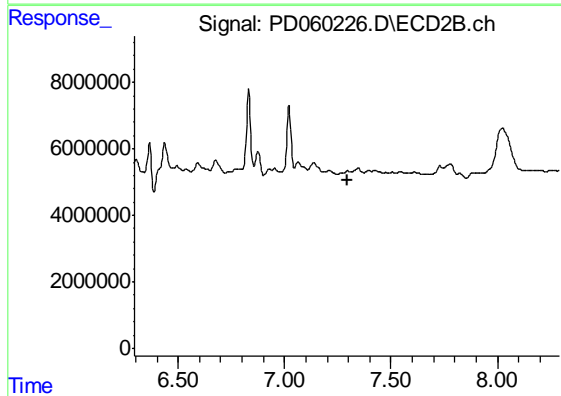
#17 4,4'-DDT
 R.T.: 7.136 min
 Delta R.T.: -0.022 min
 Response: 5018736
 Conc: 1.84 ng/ml



#19 Endosulfan Sulfate

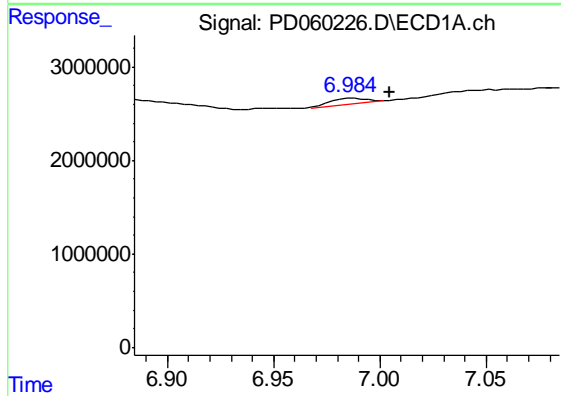
R.T.: 6.676 min
 Delta R.T.: -0.069 min
 Response: 469745
 Conc: 0.54 ng/ml

Instrument :
 ECD_D
 ClientSampleId :
 C0B82



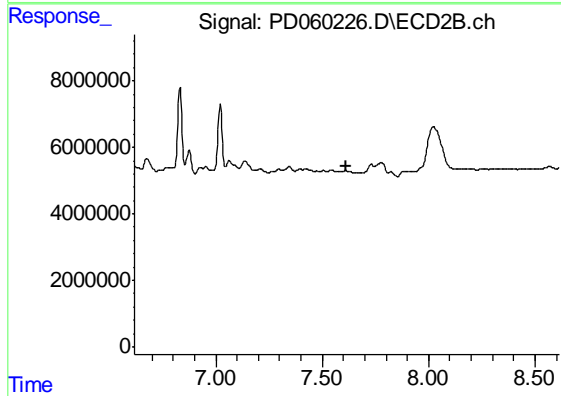
#19 Endosulfan Sulfate

R.T.: 0.000 min
 Exp R.T. : 7.294 min
 Response: 0
 Conc: N.D.



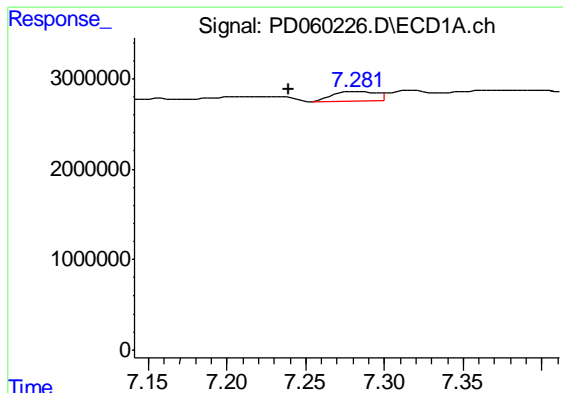
#20 Methoxychlor

R.T.: 6.988 min
 Delta R.T.: -0.017 min
 Response: 676014
 Conc: 1.59 ng/ml



#20 Methoxychlor

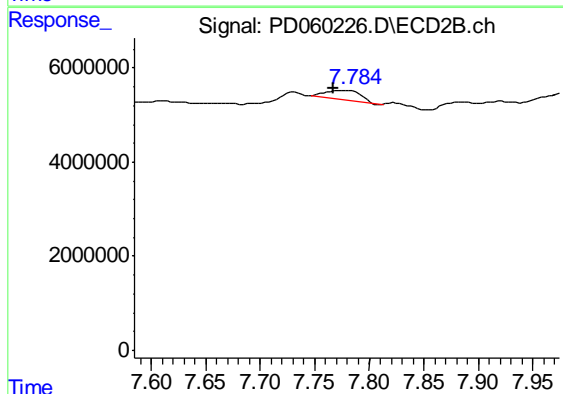
R.T.: 0.000 min
 Exp R.T. : 7.615 min
 Response: 0
 Conc: N.D.



#21 Endrin ketone

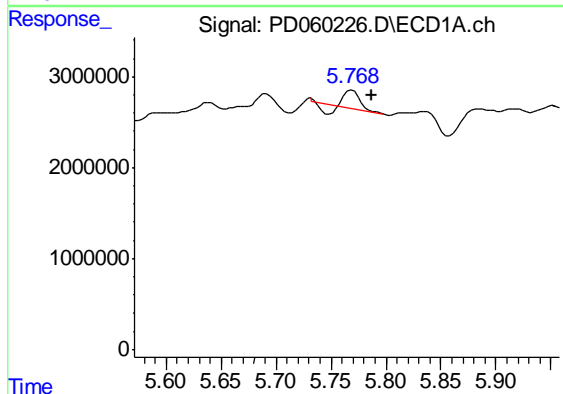
R.T.: 7.284 min
 Delta R.T.: 0.044 min
 Response: 2069961
 Conc: 2.08 ng/ml

Instrument :
 ECD_D
 ClientSampled :
 C0B82



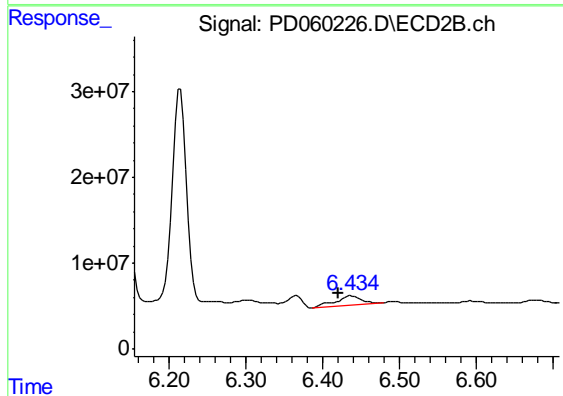
#21 Endrin ketone

R.T.: 7.779 min
 Delta R.T.: 0.012 min
 Response: 3949707
 Conc: 1.35 ng/ml



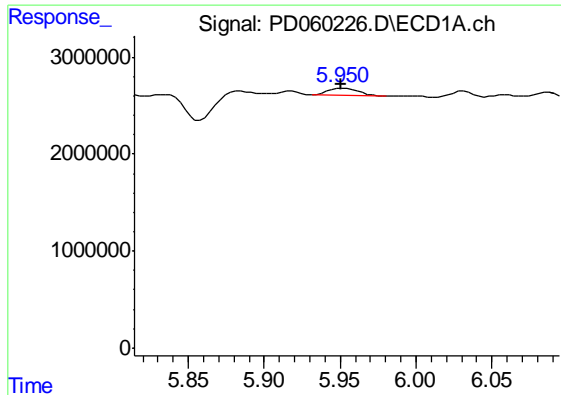
#22 Toxaphene-1

R.T.: 5.769 min
 Delta R.T.: -0.018 min
 Response: 1081095
 Conc: 165.36 ng/ml



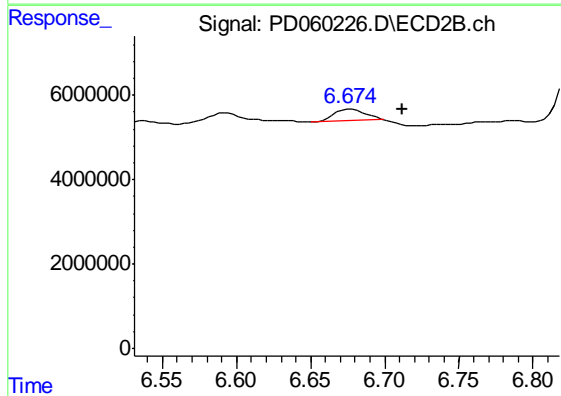
#22 Toxaphene-1

R.T.: 6.437 min
 Delta R.T.: 0.016 min
 Response: 25024988
 Conc: 1635.87 ng/ml

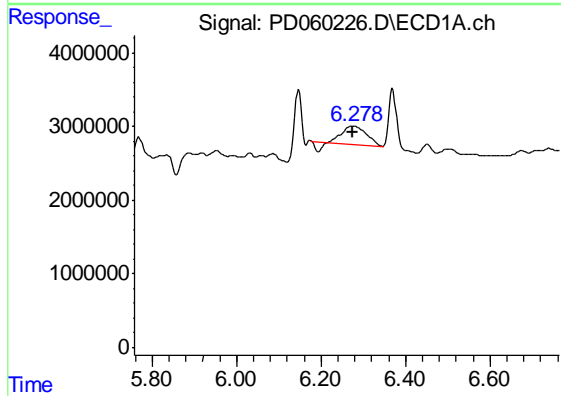


#23 Toxaphene-2
 R.T.: 5.952 min
 Delta R.T.: 0.000 min
 Response: 1002708
 Conc: 158.84 ng/ml

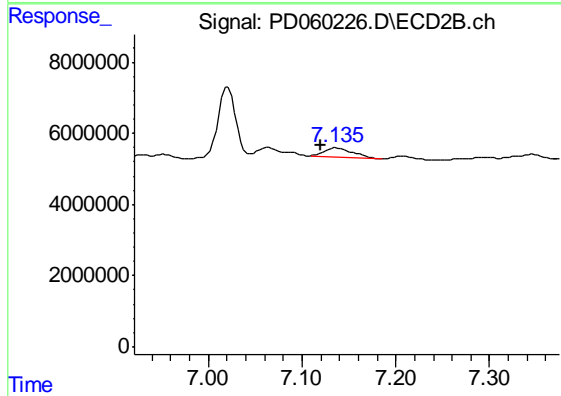
Instrument :
 ECD_D
 ClientSampleId :
 C0B82



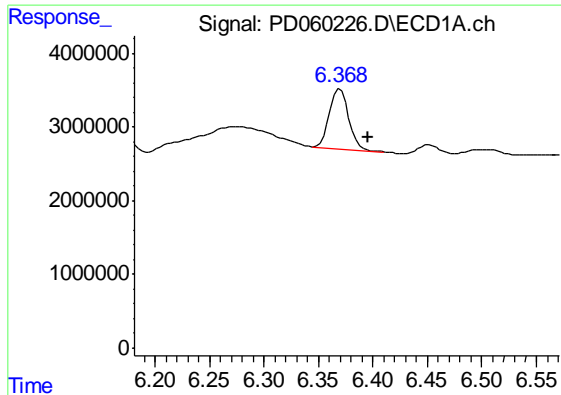
#23 Toxaphene-2
 R.T.: 6.676 min
 Delta R.T.: -0.036 min
 Response: 4222777
 Conc: 224.69 ng/ml



#24 Toxaphene-3
 R.T.: 6.278 min
 Delta R.T.: 0.003 min
 Response: 8525471
 Conc: 1207.56 ng/ml

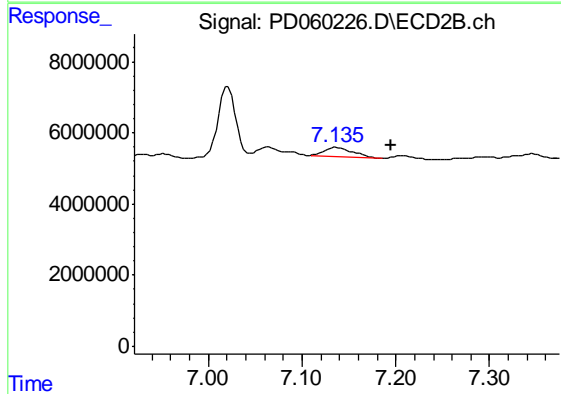


#24 Toxaphene-3
 R.T.: 7.136 min
 Delta R.T.: 0.017 min
 Response: 5018736
 Conc: 180.96 ng/ml

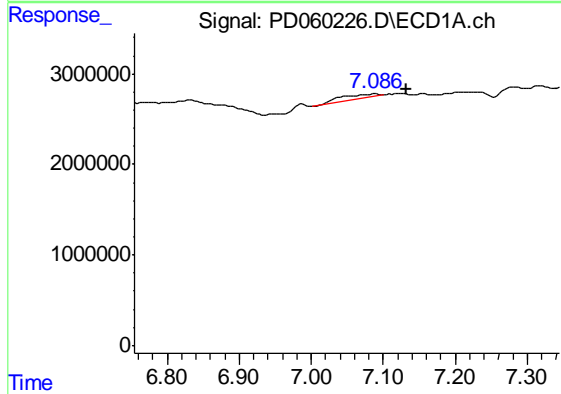


#25 Toxaphene-4
 R.T.: 6.370 min
 Delta R.T.: -0.025 min
 Response: 9907353
 Conc: 617.92 ng/ml

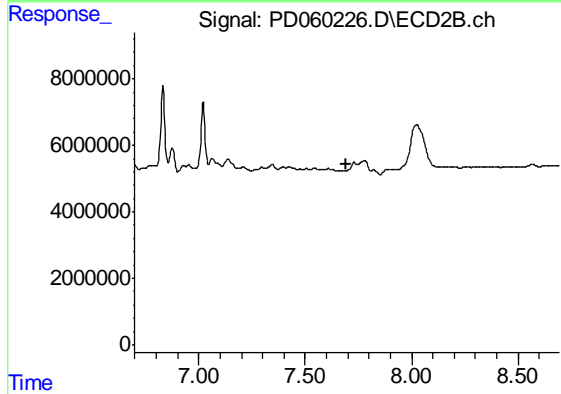
Instrument :
 ECD_D
 ClientSampled :
 C0B82



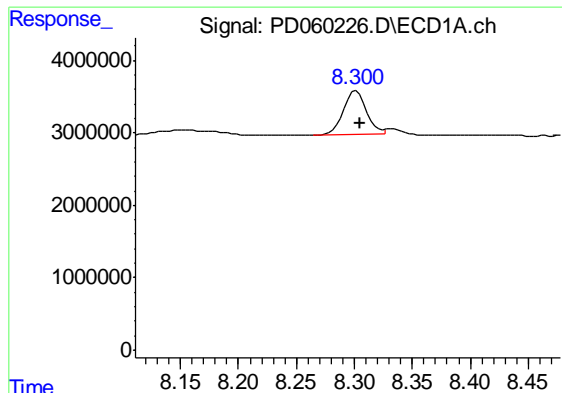
#25 Toxaphene-4
 R.T.: 7.136 min
 Delta R.T.: -0.059 min
 Response: 5018736
 Conc: 66.18 ng/ml



#26 Toxaphene-5
 R.T.: 7.088 min
 Delta R.T.: -0.044 min
 Response: 1511898
 Conc: 89.39 ng/ml



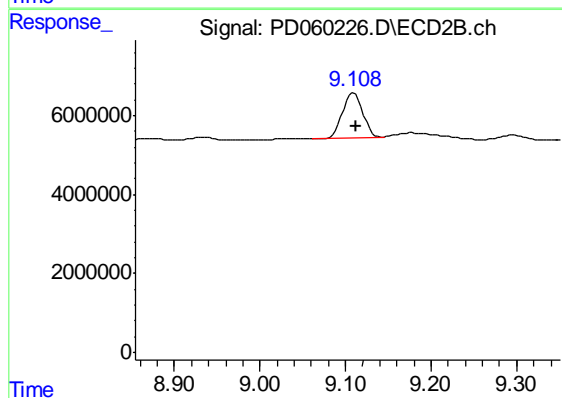
#26 Toxaphene-5
 R.T.: 7.731 min
 Delta R.T.: 0.035 min
 Response: -138741
 Conc: N.D.



#27 Decachlorobiphenyl

R.T.: 8.302 min
Delta R.T.: -0.003 min
Response: 8388986
Conc: 10.10 ng/ml

Instrument :
ECD_D
ClientSampleId :
C0B82



#27 Decachlorobiphenyl

R.T.: 9.109 min
Delta R.T.: -0.003 min
Response: 18541157
Conc: 7.54 ng/ml