

Data Path : Z:\pestpcbsrv\HPCHEM1\ECD_D\Data\PD112520\
 Data File : PD060303.D
 Signal(s) : Signal #1: ECD1A.ch Signal #2: ECD2B.ch
 Acq On : 25 Nov 2020 14:12
 Operator : DD\AJ
 Sample : L4837-06
 Misc :
 ALS Vial : 21 Sample Multiplier: 1

Instrument :
 ECD_D
 ClientSampleId :

Integration File signal 1: autoint1.e
 Integration File signal 2: autoint2.e
 Quant Time: Nov 26 01:31:37 2020
 Quant Method : Z:\pestpcbsrv\HPCHEM1\ECD_D\Method\PD112520CLP.M
 Quant Title : GC Extractables
 QLast Update : Thu Nov 26 01:04:31 2020
 Response via : Initial Calibration
 Integrator: ChemStation

Volume Inj. : 1 µl
 Signal #1 Phase : ZB-MR2 Signal #2 Phase: ZB-MR1
 Signal #1 Info : 30M x 0.32mm x0.2 Signal #2 Info : 30M x 0.32mm x 0.50µm

Compound	RT#1	RT#2	Resp#1	Resp#2	ng/ml	ng/ml
----------	------	------	--------	--------	-------	-------

System Monitoring Compounds

Target Compounds

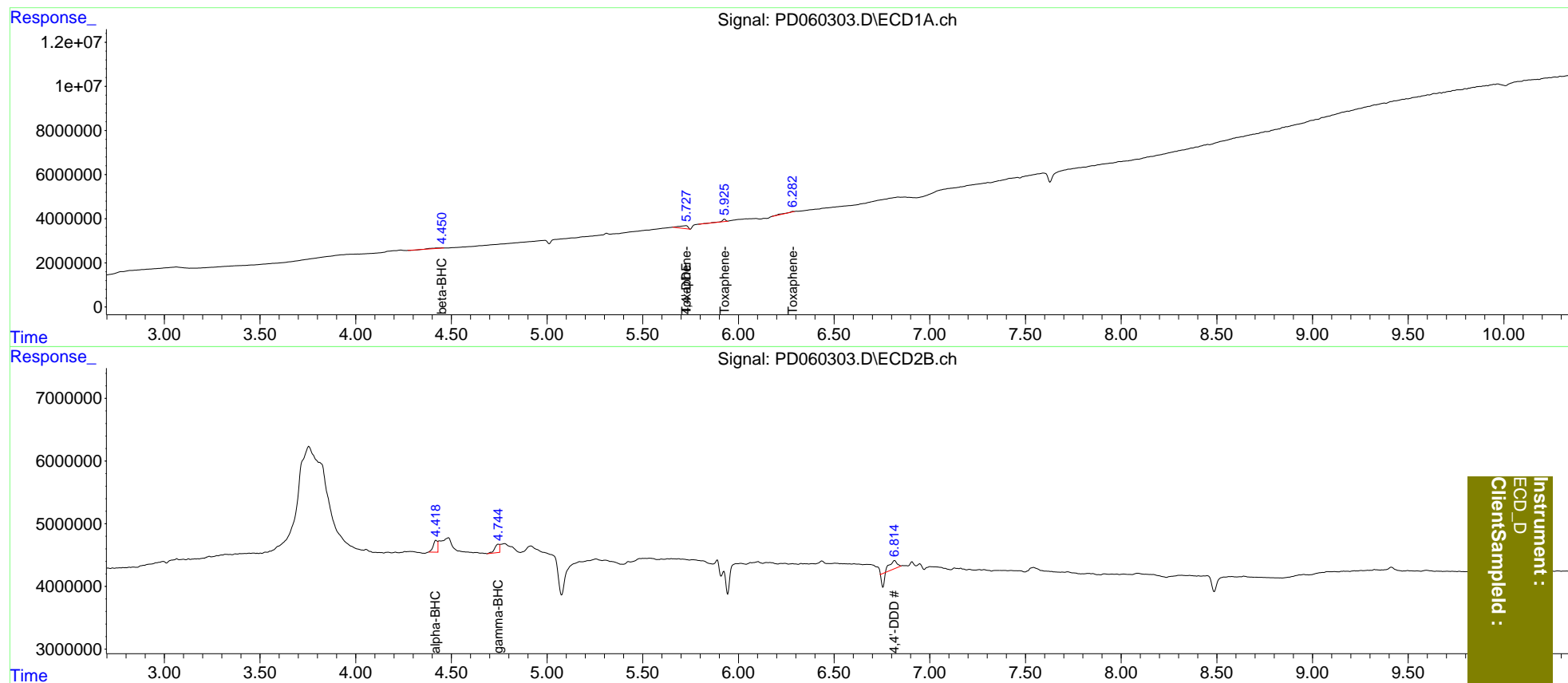
2) A	alpha-BHC	0.000	4.419	0	2900012	N.D.	0.538
3) MA	gamma-BHC...	0.000	4.746f	0	2281284	N.D.	0.468
6) B	beta-BHC	4.453f	0.000	865277	0	1.295	N.D. #
12) B	4,4'-DDE	5.727f	0.000	3981652	0	2.588	N.D. #
16) A	4,4'-DDD	0.000	6.816f	0	2046309	N.D.	0.630
22)	Toxaphene-1	5.727	0.000	3981652	0	296.658	N.D. #
23)	Toxaphene-2	5.927	0.000	1229733	0	96.908	N.D. #
24)	Toxaphene-3	6.284	0.000	804000	0	53.445	N.D. #

(f)=RT Delta > 1/2 Window (#)=Amounts differ by > 25% (m)=manual int.

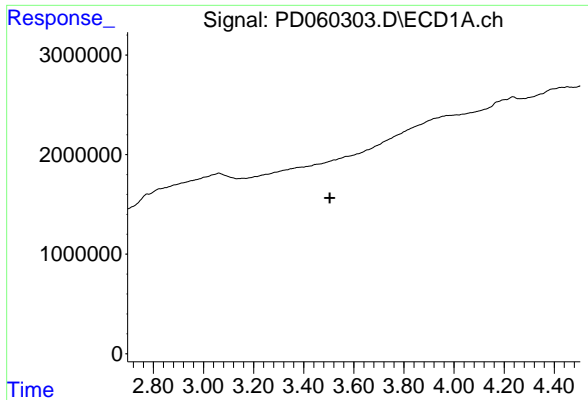
Data Path : Z:\pestpcbsrv\HPCHEM1\ECD_D\Data\PD112520\
 Data File : PD060303.D
 Signal(s) : Signal #1: ECD1A.ch Signal #2: ECD2B.ch
 Acq On : 25 Nov 2020 14:12
 Operator : DD\AJ
 Sample : L4837-06
 Misc :
 ALS Vial : 21 Sample Multiplier: 1

Integration File signal 1: autoint1.e
 Integration File signal 2: autoint2.e
 Quant Time: Nov 26 01:31:37 2020
 Quant Method : Z:\pestpcbsrv\HPCHEM1\ECD_D\Method\PD112520CLP.M
 Quant Title : GC Extractables
 QLast Update : Thu Nov 26 01:04:31 2020
 Response via : Initial Calibration
 Integrator: ChemStation

Volume Inj. : 1 µl
 Signal #1 Phase : ZB-MR2 Signal #2 Phase: ZB-MR1
 Signal #1 Info : 30M x 0.32mm x 0.2 Signal #2 Info : 30M x 0.32mm x 0.50µm

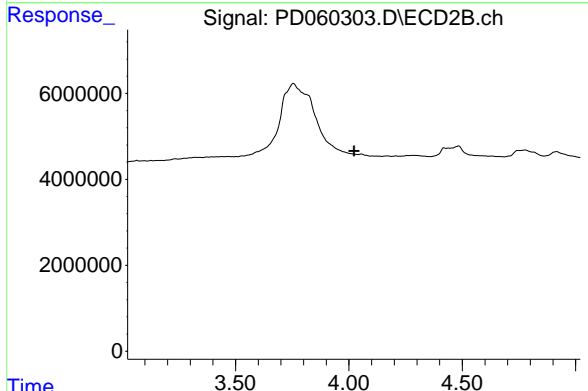


Instrument :
 ECD_D
 ClientSampleId :

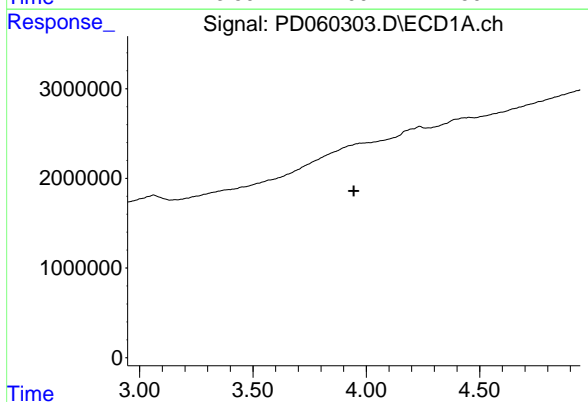


#1 Tetrachloro-m-xylene
 R.T.: 0.000 min
 Exp R.T. : 3.504 min
 Response: 0
 Conc: N.D.

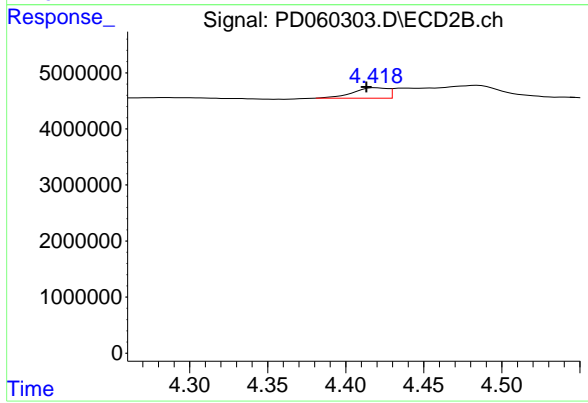
Instrument :
 ECD_D
 ClientSampleId :



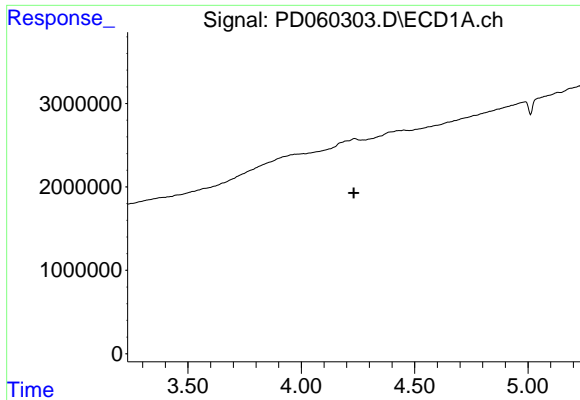
#1 Tetrachloro-m-xylene
 R.T.: 0.000 min
 Exp R.T. : 4.023 min
 Response: 0
 Conc: N.D.



#2 alpha-BHC
 R.T.: 0.000 min
 Exp R.T. : 3.945 min
 Response: 0
 Conc: N.D.

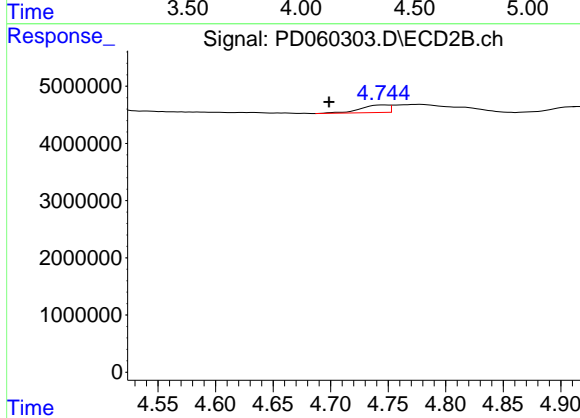


#2 alpha-BHC
 R.T.: 4.419 min
 Delta R.T.: 0.006 min
 Response: 2900012
 Conc: 0.54 ng/ml

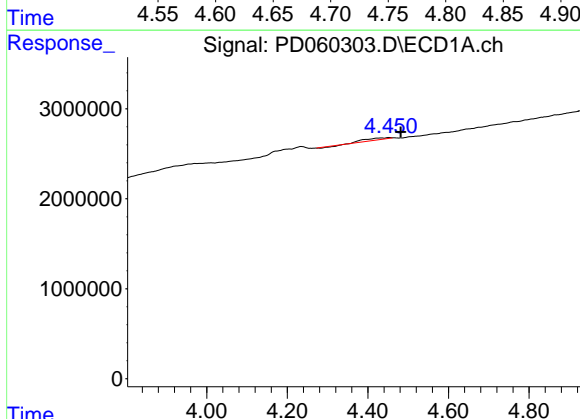


#3 gamma-BHC (Lindane)
 R.T.: 0.000 min
 Exp R.T.: 4.231 min
 Response: 0
 Conc: N.D.

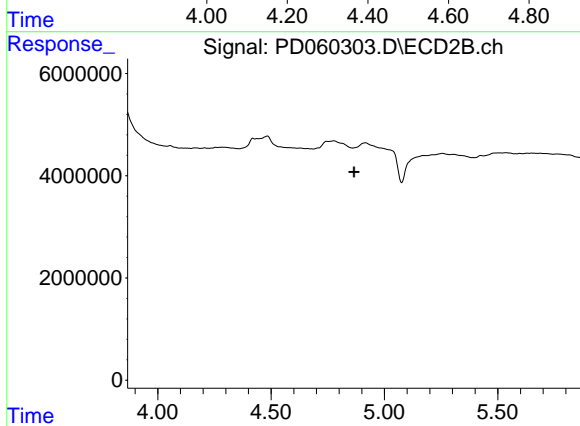
Instrument :
 ECD_D
 ClientSampleId :



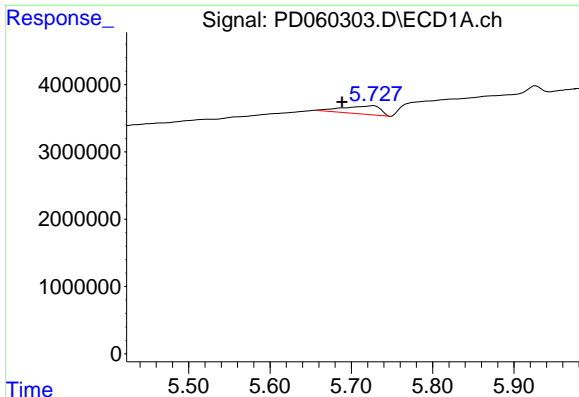
#3 gamma-BHC (Lindane)
 R.T.: 4.746 min
 Delta R.T.: 0.047 min
 Response: 2281284
 Conc: 0.47 ng/ml



#6 beta-BHC
 R.T.: 4.453 min
 Delta R.T.: -0.029 min
 Response: 865277
 Conc: 1.29 ng/ml



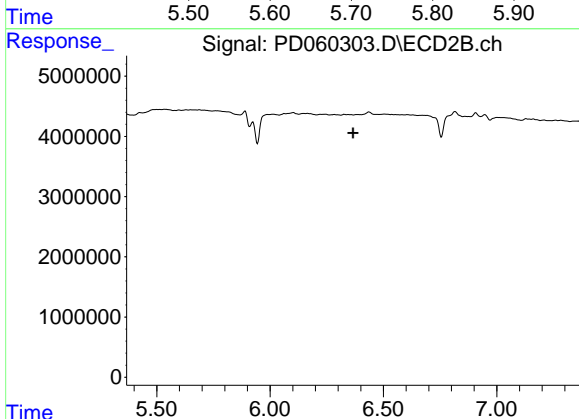
#6 beta-BHC
 R.T.: 0.000 min
 Exp R.T.: 4.866 min
 Response: 0
 Conc: N.D.



#12 4,4'-DDE

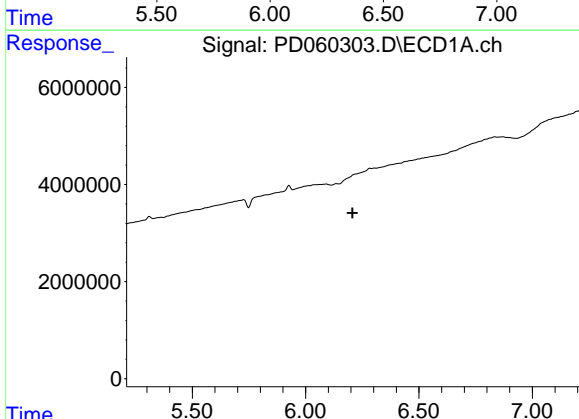
R.T.: 5.727 min
 Delta R.T.: 0.039 min
 Response: 3981652
 Conc: 2.59 ng/ml

Instrument :
 ECD_D
 ClientSampleId :



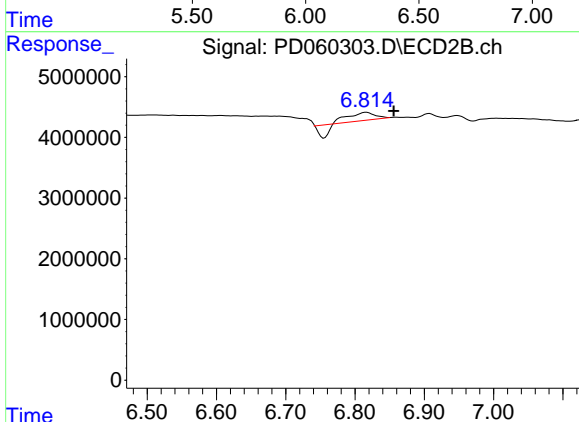
#12 4,4'-DDE

R.T.: 0.000 min
 Exp R.T. : 6.366 min
 Response: 0
 Conc: N.D.



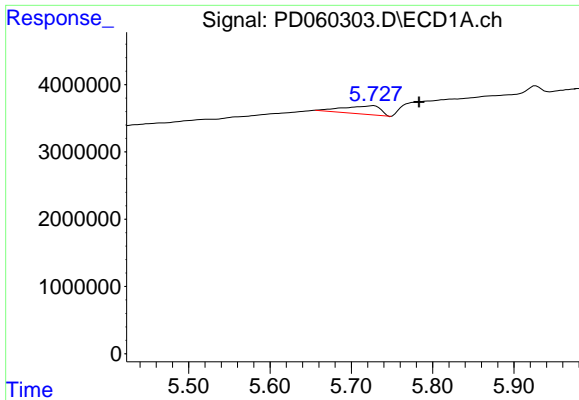
#16 4,4'-DDD

R.T.: 0.000 min
 Exp R.T. : 6.207 min
 Response: 0
 Conc: N.D.



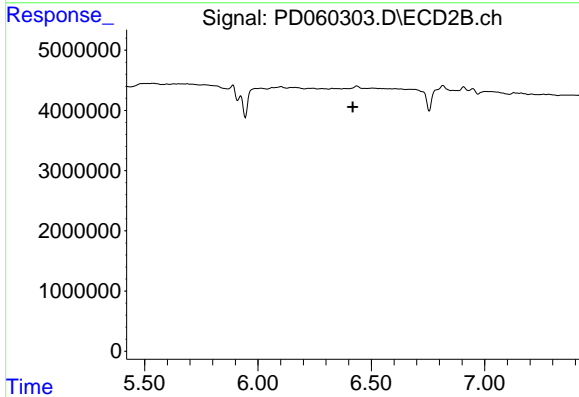
#16 4,4'-DDD

R.T.: 6.816 min
 Delta R.T.: -0.040 min
 Response: 2046309
 Conc: 0.63 ng/ml

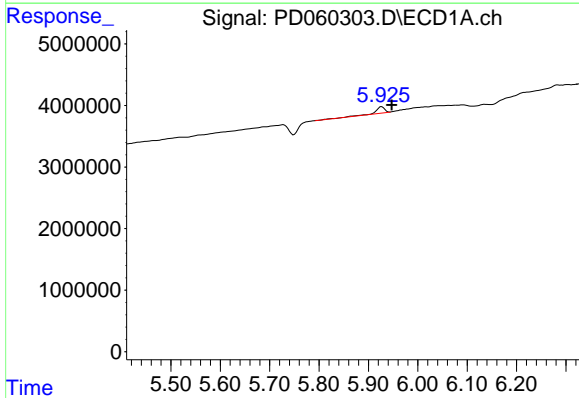


#22 Toxaphene-1
 R.T.: 5.727 min
 Delta R.T.: -0.056 min
 Response: 3981652
 Conc: 296.66 ng/ml

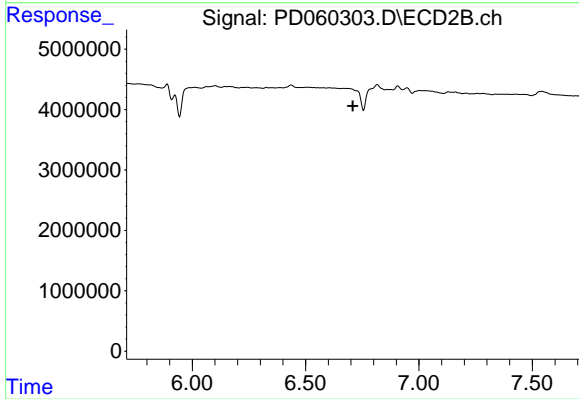
Instrument :
 ECD_D
 ClientSampleId :



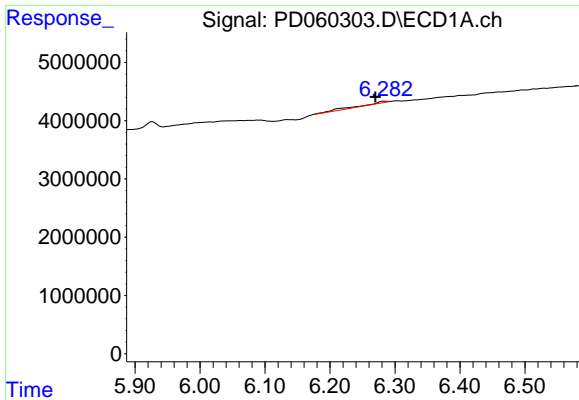
#22 Toxaphene-1
 R.T.: 0.000 min
 Exp R.T. : 6.418 min
 Response: 0
 Conc: N.D.



#23 Toxaphene-2
 R.T.: 5.927 min
 Delta R.T.: -0.020 min
 Response: 1229733
 Conc: 96.91 ng/ml

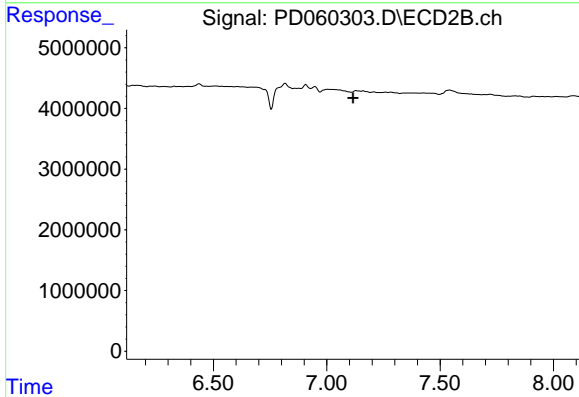


#23 Toxaphene-2
 R.T.: 0.000 min
 Exp R.T. : 6.708 min
 Response: 0
 Conc: N.D.

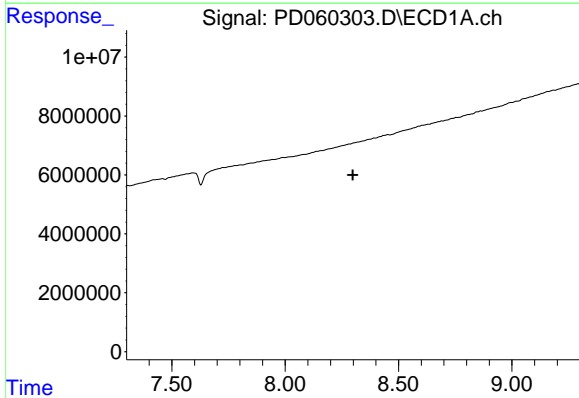


#24 Toxaphene-3
 R.T.: 6.284 min
 Delta R.T.: 0.014 min
 Response: 804000
 Conc: 53.45 ng/ml

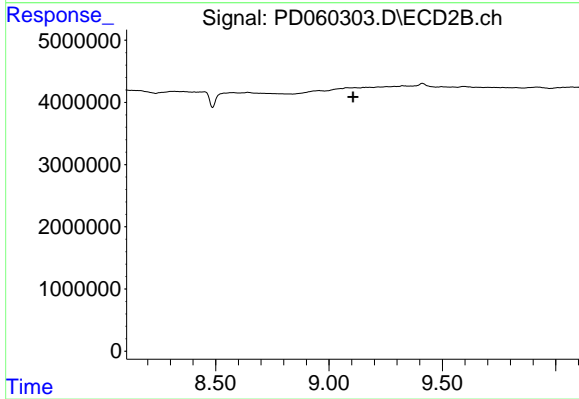
Instrument :
 ECD_D
 ClientSampleId :



#24 Toxaphene-3
 R.T.: 0.000 min
 Exp R.T. : 7.116 min
 Response: 0
 Conc: N.D.



#27 Decachlorobiphenyl
 R.T.: 0.000 min
 Exp R.T. : 8.299 min
 Response: 0
 Conc: N.D.



#27 Decachlorobiphenyl
 R.T.: 0.000 min
 Exp R.T. : 9.107 min
 Response: 0
 Conc: N.D.