

Data Path : Z:\pestpcbsrv\HPCHEM1\ECD_D\Data\PD112520\
 Data File : PD060320.D
 Signal(s) : Signal #1: ECD1A.ch Signal #2: ECD2B.ch
 Acq On : 25 Nov 2020 18:12
 Operator : DD\AJ
 Sample : L4793-21
 Misc :
 ALS Vial : 17 Sample Multiplier: 1

Instrument :
 ECD_D
 ClientSampled :

Integration File signal 1: autoint1.e
 Integration File signal 2: autoint2.e
 Quant Time: Nov 26 01:35:18 2020
 Quant Method : Z:\pestpcbsrv\HPCHEM1\ECD_D\Method\PD112520CLP.M
 Quant Title : GC Extractables
 QLast Update : Thu Nov 26 01:04:31 2020
 Response via : Initial Calibration
 Integrator: ChemStation

Volume Inj. : 1 µl
 Signal #1 Phase : ZB-MR2 Signal #2 Phase: ZB-MR1
 Signal #1 Info : 30M x 0.32mm x0.2 Signal #2 Info : 30M x 0.32mm x 0.50µm

Compound	RT#1	RT#2	Resp#1	Resp#2	ng/ml	ng/ml

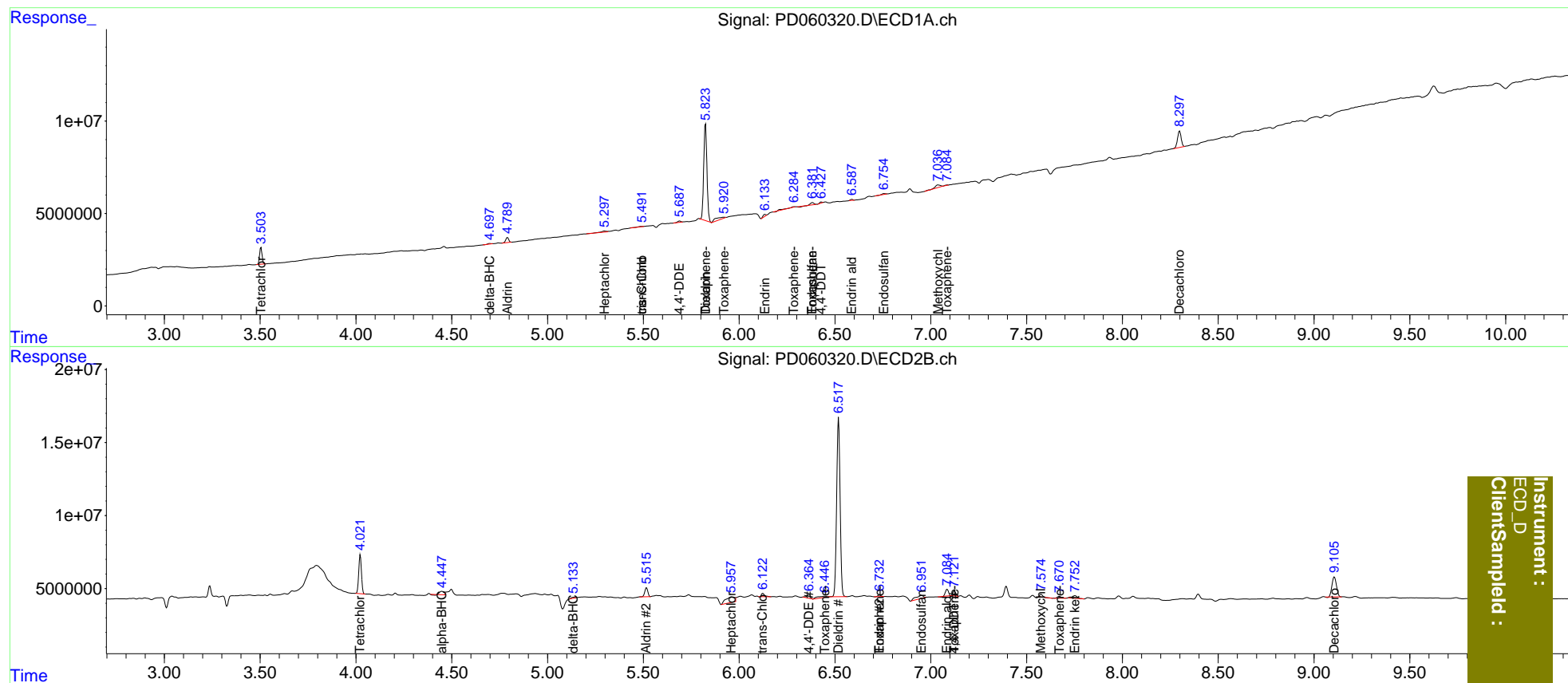
System Monitoring Compounds						
1) SA Tetrachlo...	3.504	4.023	8277492	26281709	7.537	7.279
27) SA Decachlor...	8.298	9.106	11732927	22233904	8.949	7.957
Target Compounds						
2) A alpha-BHC	0.000	4.449f	0	3411989	N.D.	0.633
5) MB Aldrin	4.791	5.517	2987270	6859861	1.875	1.545
7) B delta-BHC	4.698	5.135f	342833	834505	0.206	0.232
8) B Heptachlo...	5.298f	5.959f	1131967	12191970	0.756	3.452 #
10) B trans-Chl...	5.492	6.123	320769	2594656	0.209	0.623 #
11) B cis-Chlor...	5.492	0.000	320769	0	0.217	N.D. #
12) B 4,4'-DDE	5.690	6.365	823601	3468445	0.535	0.876 #
13) MA Dieldrin	5.824	6.519	61124001	153.5E6	38.242	37.028
14) MA Endrin	6.135f	6.733	1035032	1147556	0.766	0.330 #
15) B Endosulfa...	6.382	6.952	1024878	5977012	0.819	1.856 #
17) MA 4,4'-DDT	6.428	7.123	455040	3659478	0.348	1.106 #
18) B Endrin al...	6.588f	7.086	459293	4962529	0.462	1.827 #
20) A Methoxychlor	7.038f	7.576f	2640892	1875147	4.267	1.124 #
21) B Endrin ke...	0.000	7.753	0	3586898	N.D.	1.060
22) Toxaphene-1	5.824	6.447	61124001	3433865	4554.118	135.211 #
23) Toxaphene-2	5.920	6.733	3906788	1147556	307.872	36.684 #
24) Toxaphene-3	6.285	7.123	690906	3659478	45.927	79.836 #
25) Toxaphene-4	6.382	7.246	1024878	-2147879	30.041	N.D. #
26) Toxaphene-5	7.086	7.671	221457	1719280	6.087	30.278 #

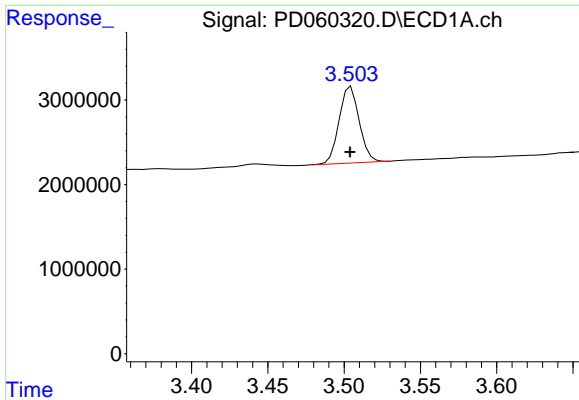
(f)=RT Delta > 1/2 Window (#)=Amounts differ by > 25% (m)=manual int.

Data Path : Z:\pestpcbsrv\HPCHEM1\ECD_D\Data\PD112520\
 Data File : PD060320.D
 Signal(s) : Signal #1: ECD1A.ch Signal #2: ECD2B.ch
 Acq On : 25 Nov 2020 18:12
 Operator : DD\AJ
 Sample : L4793-21
 Misc :
 ALS Vial : 17 Sample Multiplier: 1

Integration File signal 1: autoint1.e
 Integration File signal 2: autoint2.e
 Quant Time: Nov 26 01:35:18 2020
 Quant Method : Z:\pestpcbsrv\HPCHEM1\ECD_D\Method\PD112520CLP.M
 Quant Title : GC Extractables
 QLast Update : Thu Nov 26 01:04:31 2020
 Response via : Initial Calibration
 Integrator: ChemStation

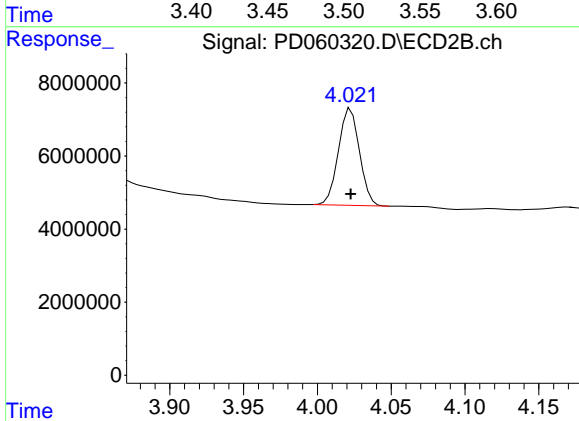
Volume Inj. : 1 µl
 Signal #1 Phase : ZB-MR2 Signal #2 Phase: ZB-MR1
 Signal #1 Info : 30M x 0.32mm x0.2 Signal #2 Info : 30M x 0.32mm x 0.50µm



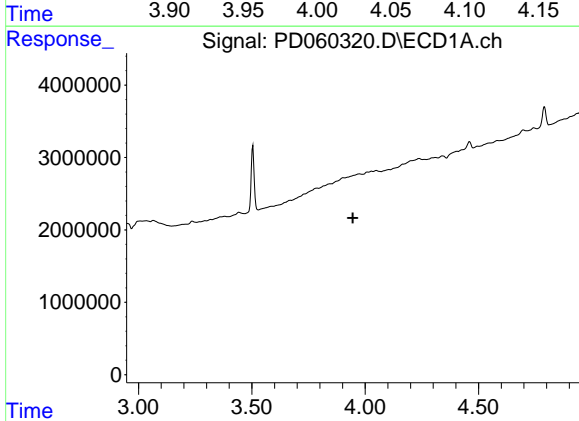


#1 Tetrachloro-m-xylene
 R.T.: 3.504 min
 Delta R.T.: 0.000 min
 Response: 8277492
 Conc: 7.54 ng/ml

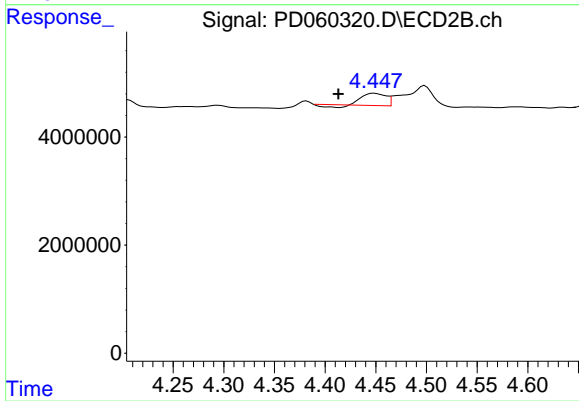
Instrument :
 ECD_D
 ClientSampled :



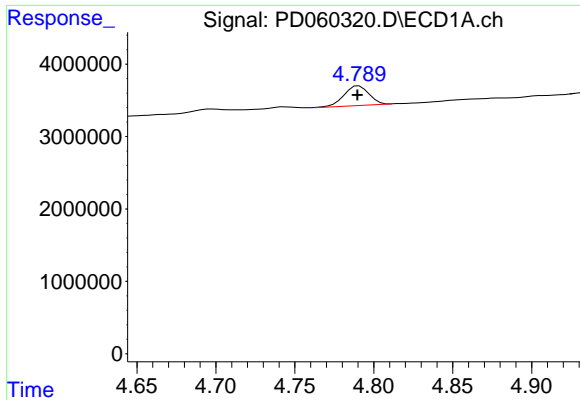
#1 Tetrachloro-m-xylene
 R.T.: 4.023 min
 Delta R.T.: 0.000 min
 Response: 26281709
 Conc: 7.28 ng/ml



#2 alpha-BHC
 R.T.: 0.000 min
 Exp R.T. : 3.945 min
 Response: 0
 Conc: N.D.

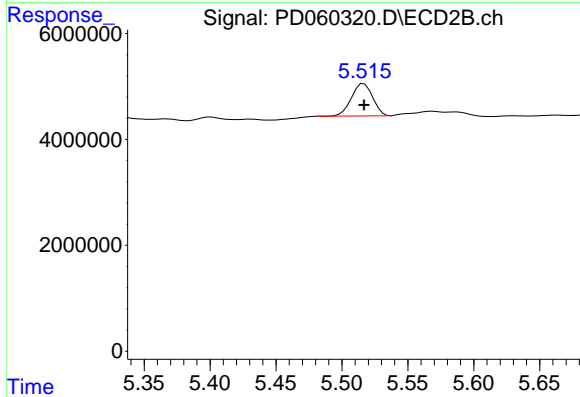


#2 alpha-BHC
 R.T.: 4.449 min
 Delta R.T.: 0.035 min
 Response: 3411989
 Conc: 0.63 ng/ml

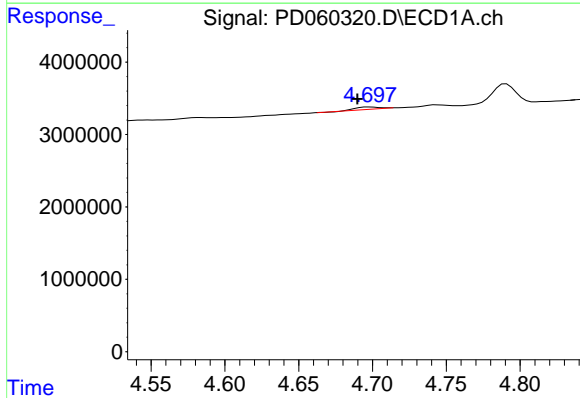


#5 Aldrin
 R.T.: 4.791 min
 Delta R.T.: 0.000 min
 Response: 2987270
 Conc: 1.88 ng/ml

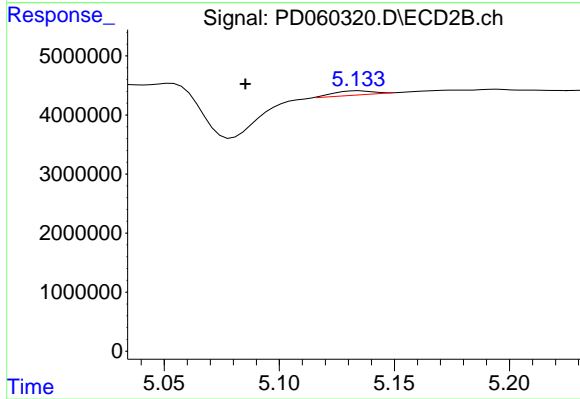
Instrument :
 ECD_D
 ClientSampleId :



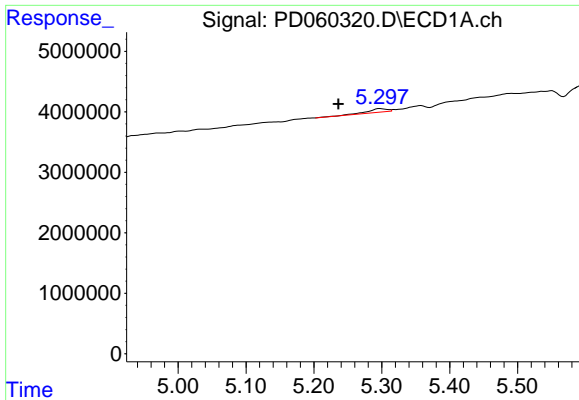
#5 Aldrin
 R.T.: 5.517 min
 Delta R.T.: 0.000 min
 Response: 6859861
 Conc: 1.54 ng/ml



#7 delta-BHC
 R.T.: 4.698 min
 Delta R.T.: 0.008 min
 Response: 342833
 Conc: 0.21 ng/ml

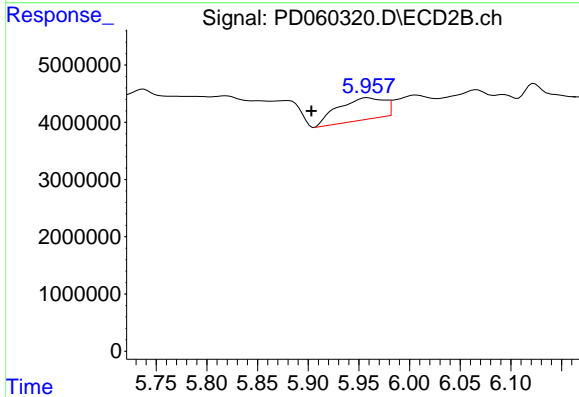


#7 delta-BHC
 R.T.: 5.135 min
 Delta R.T.: 0.049 min
 Response: 834505
 Conc: 0.23 ng/ml

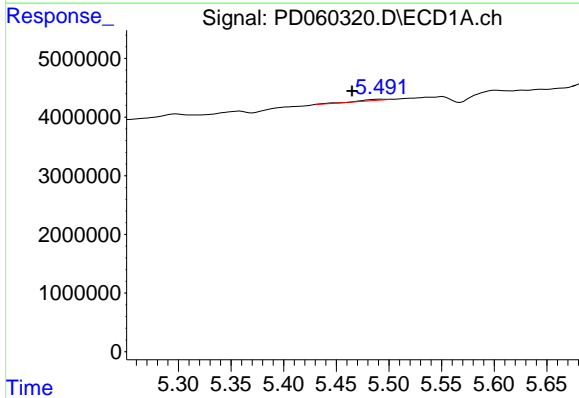


#8 Heptachlor epoxide
 R.T.: 5.298 min
 Delta R.T.: 0.062 min
 Response: 1131967
 Conc: 0.76 ng/ml

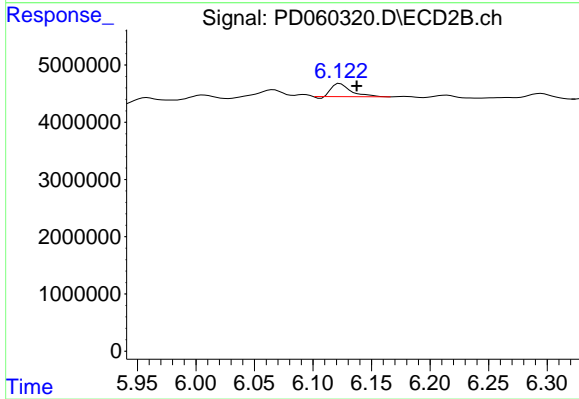
Instrument :
 ECD_D
 ClientSampleId :



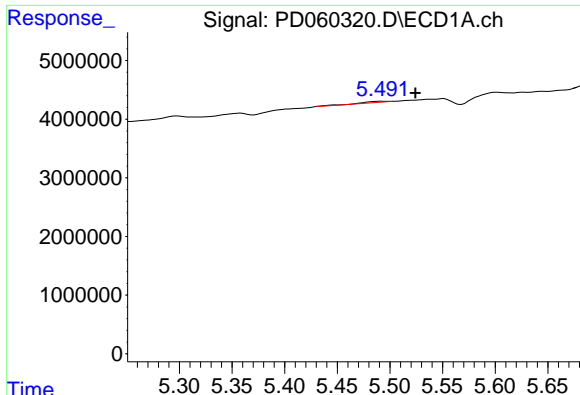
#8 Heptachlor epoxide
 R.T.: 5.959 min
 Delta R.T.: 0.056 min
 Response: 12191970
 Conc: 3.45 ng/ml



#10 trans-Chlordane
 R.T.: 5.492 min
 Delta R.T.: 0.027 min
 Response: 320769
 Conc: 0.21 ng/ml

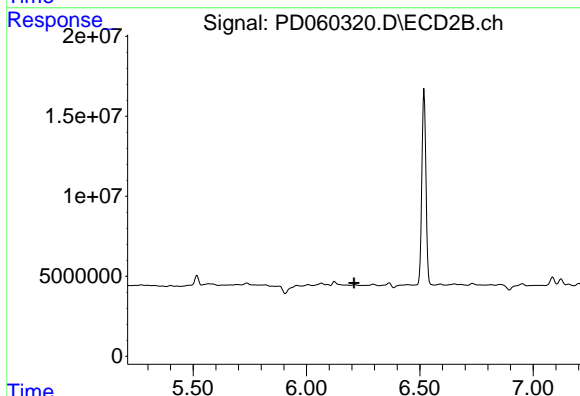


#10 trans-Chlordane
 R.T.: 6.123 min
 Delta R.T.: -0.014 min
 Response: 2594656
 Conc: 0.62 ng/ml

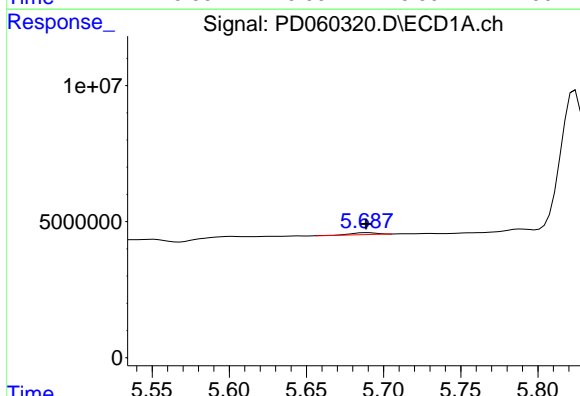


#11 cis-Chlordane
 R.T.: 5.492 min
 Delta R.T.: -0.032 min
 Response: 320769
 Conc: 0.22 ng/ml

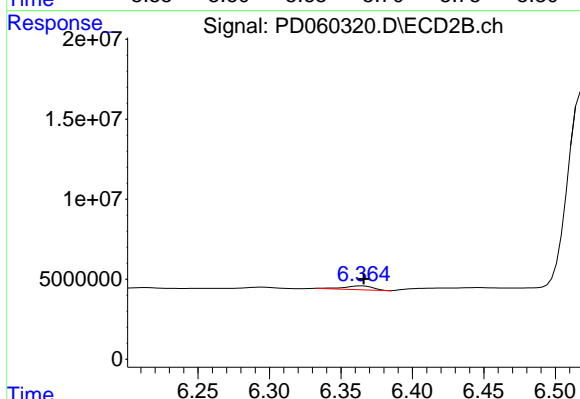
Instrument :
 ECD_D
 ClientSampled :



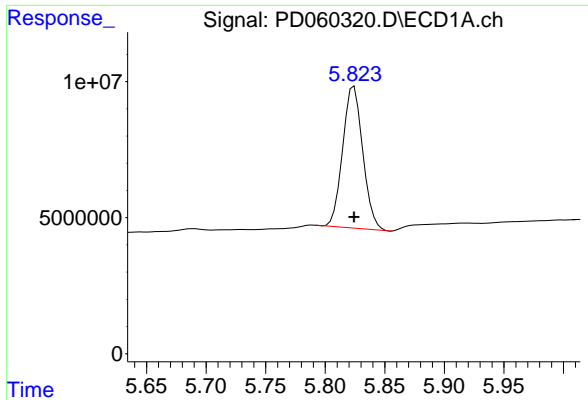
#11 cis-Chlordane
 R.T.: 0.000 min
 Exp R.T. : 6.211 min
 Response: 0
 Conc: N.D.



#12 4,4'-DDE
 R.T.: 5.690 min
 Delta R.T.: 0.000 min
 Response: 823601
 Conc: 0.54 ng/ml

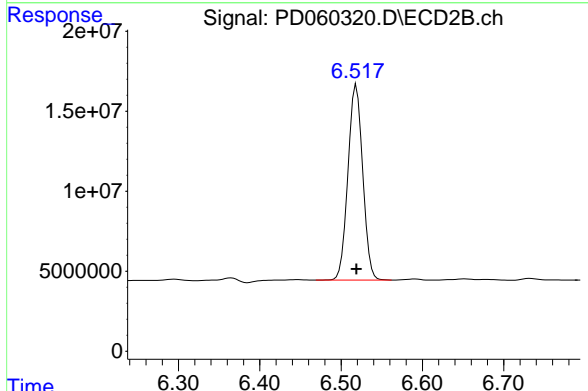


#12 4,4'-DDE
 R.T.: 6.365 min
 Delta R.T.: -0.001 min
 Response: 3468445
 Conc: 0.88 ng/ml

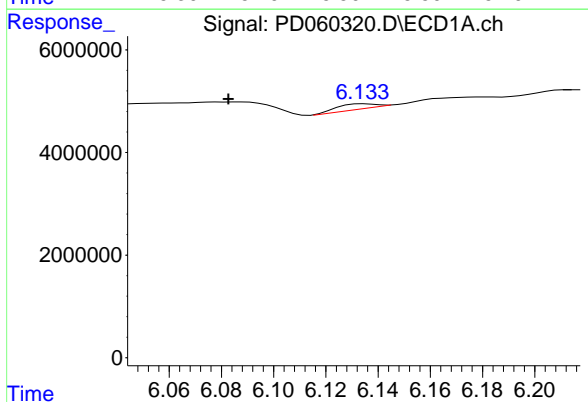


#13 Dieldrin
 R.T.: 5.824 min
 Delta R.T.: 0.000 min
 Response: 61124001
 Conc: 38.24 ng/ml

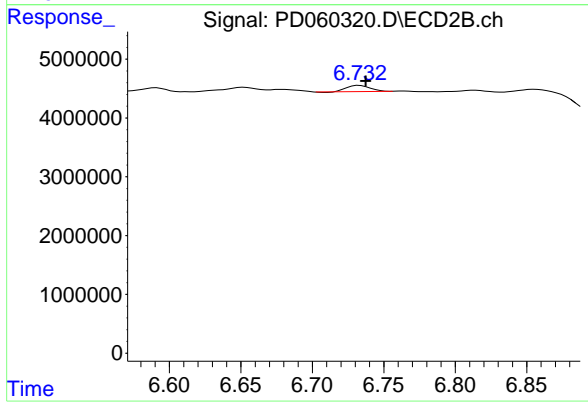
Instrument :
 ECD_D
 ClientSampled :



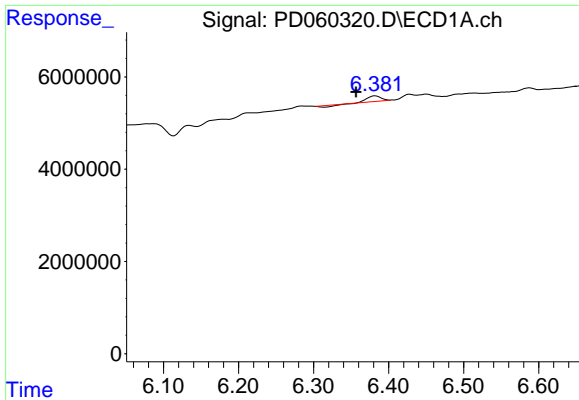
#13 Dieldrin
 R.T.: 6.519 min
 Delta R.T.: 0.000 min
 Response: 153533233
 Conc: 37.03 ng/ml



#14 Endrin
 R.T.: 6.135 min
 Delta R.T.: 0.052 min
 Response: 1035032
 Conc: 0.77 ng/ml



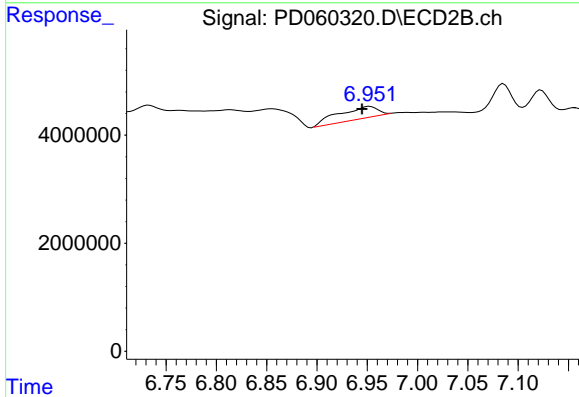
#14 Endrin
 R.T.: 6.733 min
 Delta R.T.: -0.004 min
 Response: 1147556
 Conc: 0.33 ng/ml



#15 Endosulfan II

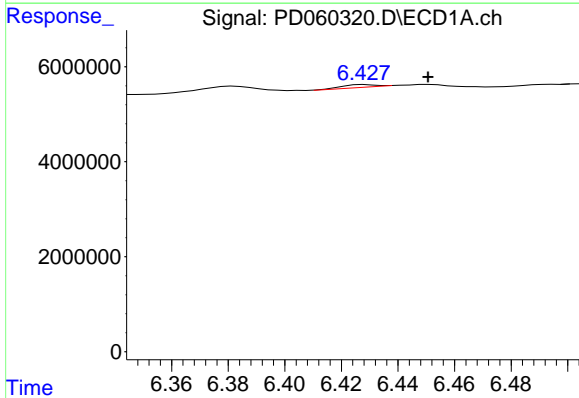
R.T.: 6.382 min
Delta R.T.: 0.026 min
Response: 1024878
Conc: 0.82 ng/ml

Instrument :
ECD_D
ClientSampled :



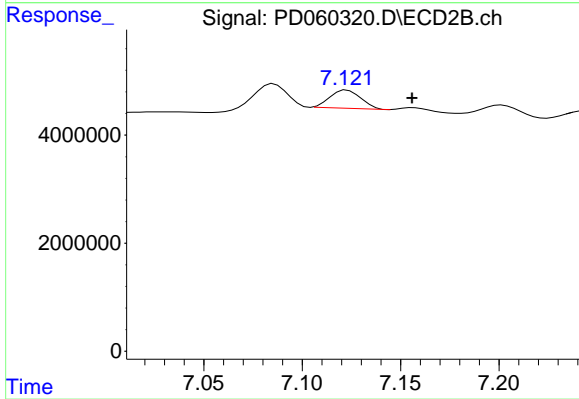
#15 Endosulfan II

R.T.: 6.952 min
Delta R.T.: 0.007 min
Response: 5977012
Conc: 1.86 ng/ml



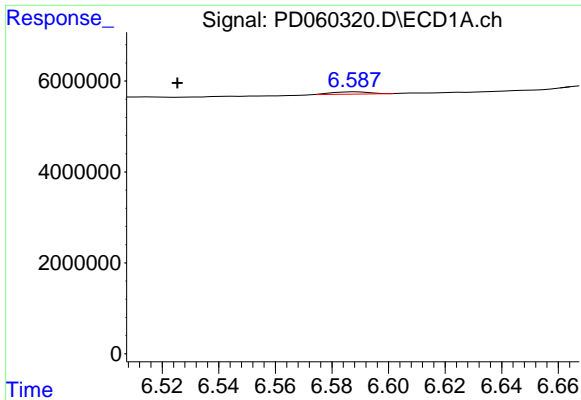
#17 4,4'-DDT

R.T.: 6.428 min
Delta R.T.: -0.022 min
Response: 455040
Conc: 0.35 ng/ml



#17 4,4'-DDT

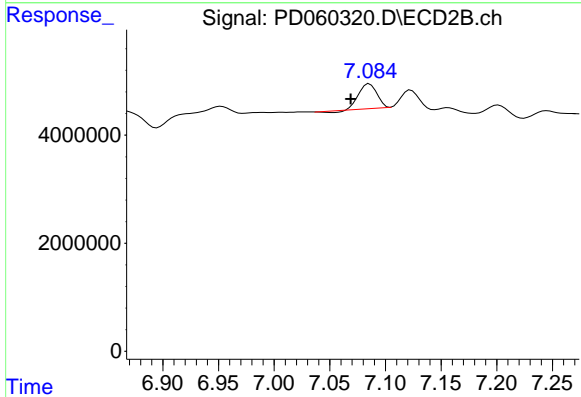
R.T.: 7.123 min
Delta R.T.: -0.033 min
Response: 3659478
Conc: 1.11 ng/ml



#18 Endrin aldehyde

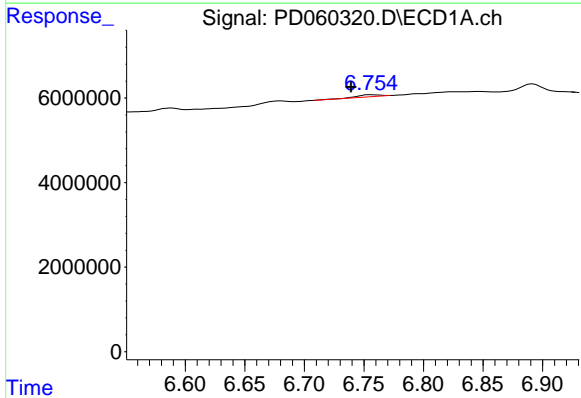
R.T.: 6.588 min
 Delta R.T.: 0.063 min
 Response: 459293
 Conc: 0.46 ng/ml

Instrument :
 ECD_D
 ClientSampleId :



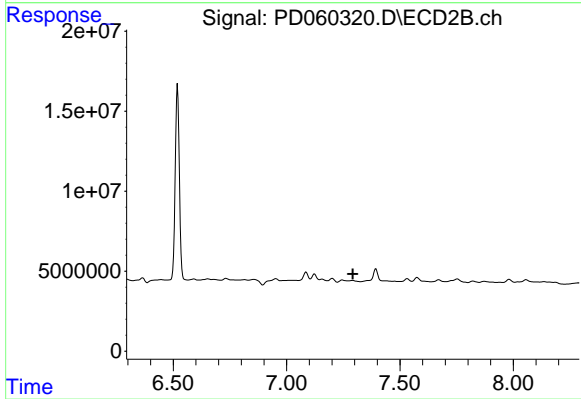
#18 Endrin aldehyde

R.T.: 7.086 min
 Delta R.T.: 0.017 min
 Response: 4962529
 Conc: 1.83 ng/ml



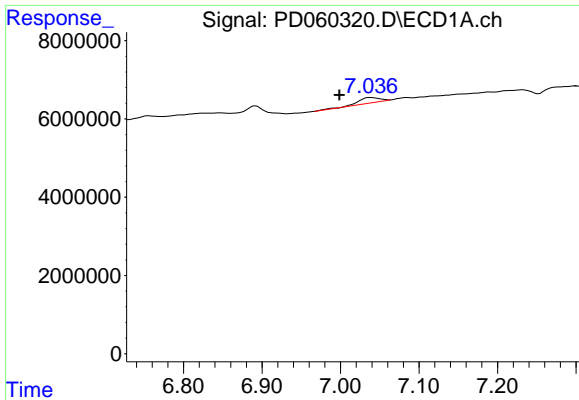
#19 Endosulfan Sulfate

R.T.: 6.755 min
 Delta R.T.: 0.016 min
 Response: 609522
 Conc: 0.53 ng/ml



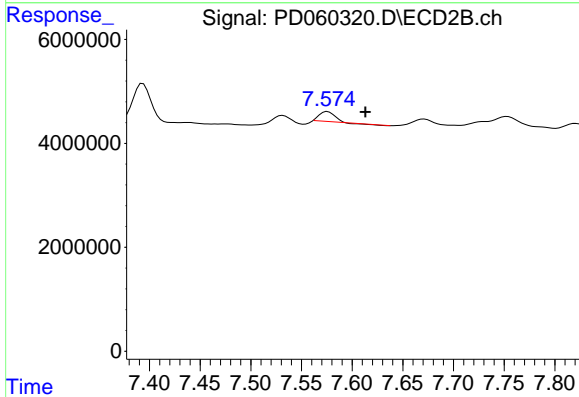
#19 Endosulfan Sulfate

R.T.: 7.246 min
 Delta R.T.: -0.046 min
 Response: -2147879
 Conc: N.D.

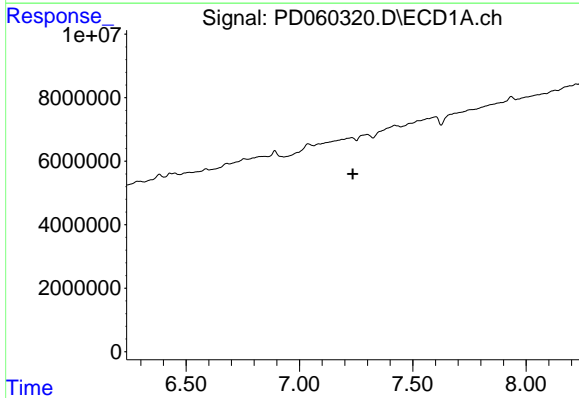


#20 Methoxychlor
 R.T.: 7.038 min
 Delta R.T.: 0.039 min
 Response: 2640892
 Conc: 4.27 ng/ml

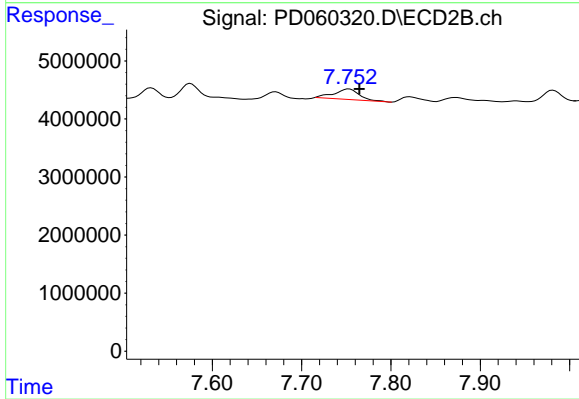
Instrument :
 ECD_D
 ClientSampleId :



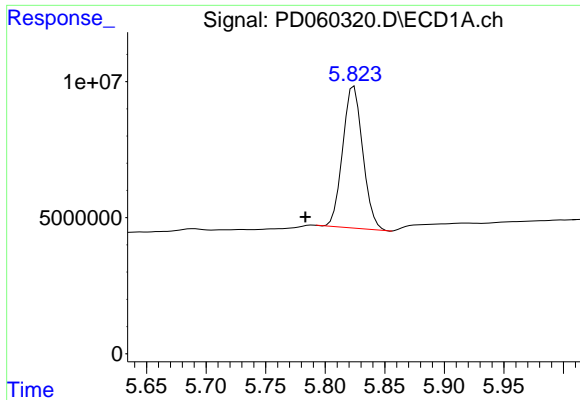
#20 Methoxychlor
 R.T.: 7.576 min
 Delta R.T.: -0.037 min
 Response: 1875147
 Conc: 1.12 ng/ml



#21 Endrin ketone
 R.T.: 0.000 min
 Exp R.T. : 7.236 min
 Response: 0
 Conc: N.D.

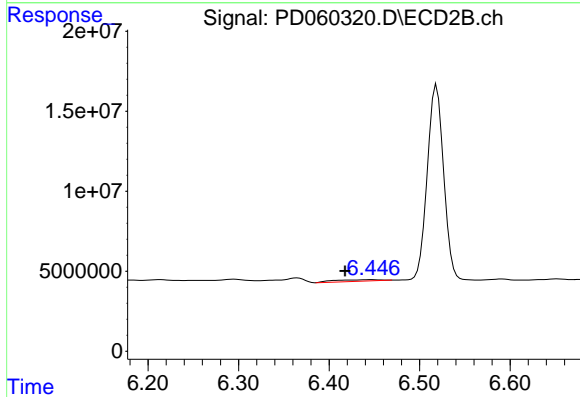


#21 Endrin ketone
 R.T.: 7.753 min
 Delta R.T.: -0.012 min
 Response: 3586898
 Conc: 1.06 ng/ml

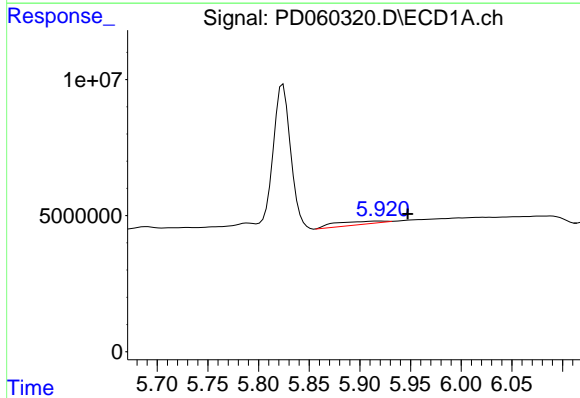


#22 Toxaphene-1
 R.T.: 5.824 min
 Delta R.T.: 0.041 min
 Response: 61124001
 Conc: 4554.12 ng/ml

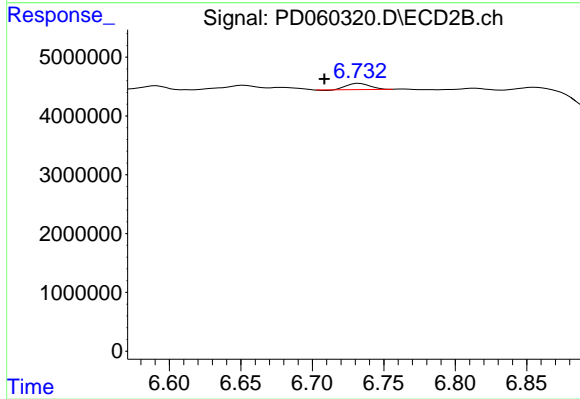
Instrument :
 ECD_D
 ClientSampled :



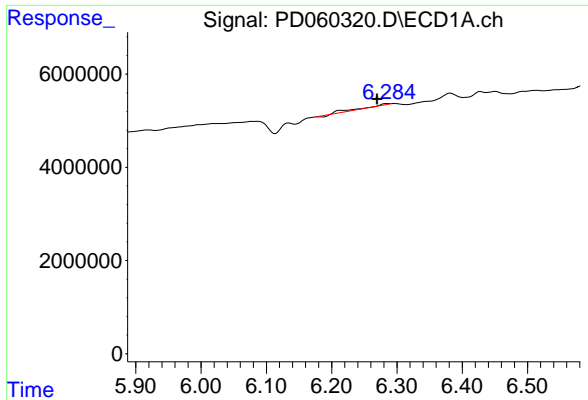
#22 Toxaphene-1
 R.T.: 6.447 min
 Delta R.T.: 0.029 min
 Response: 3433865
 Conc: 135.21 ng/ml



#23 Toxaphene-2
 R.T.: 5.920 min
 Delta R.T.: -0.027 min
 Response: 3906788
 Conc: 307.87 ng/ml

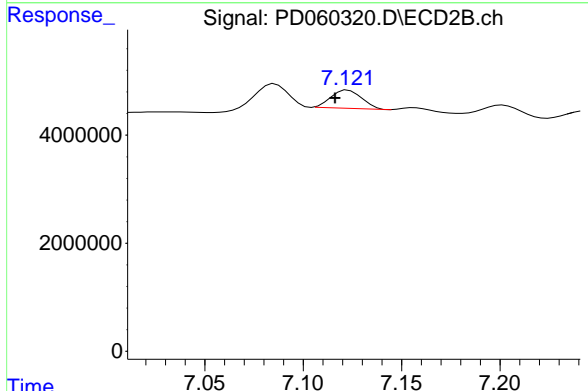


#23 Toxaphene-2
 R.T.: 6.733 min
 Delta R.T.: 0.024 min
 Response: 1147556
 Conc: 36.68 ng/ml

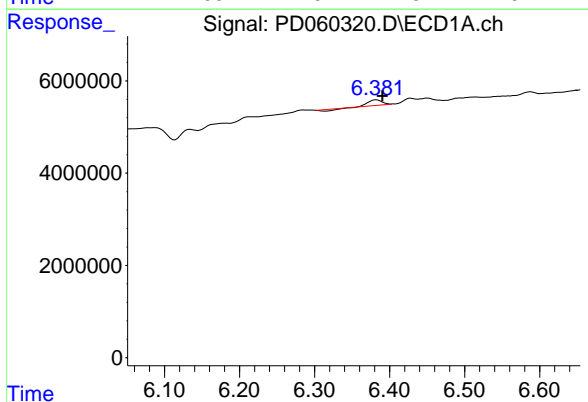


#24 Toxaphene-3
 R.T.: 6.285 min
 Delta R.T.: 0.016 min
 Response: 690906
 Conc: 45.93 ng/ml

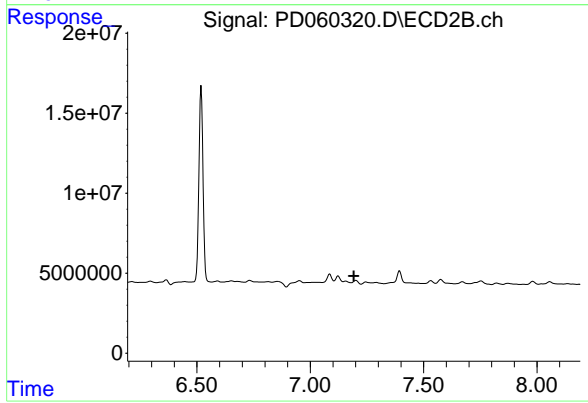
Instrument :
 ECD_D
 ClientSampleId :



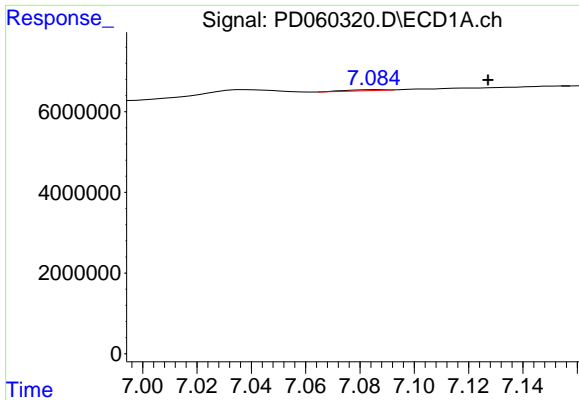
#24 Toxaphene-3
 R.T.: 7.123 min
 Delta R.T.: 0.007 min
 Response: 3659478
 Conc: 79.84 ng/ml



#25 Toxaphene-4
 R.T.: 6.382 min
 Delta R.T.: -0.008 min
 Response: 1024878
 Conc: 30.04 ng/ml

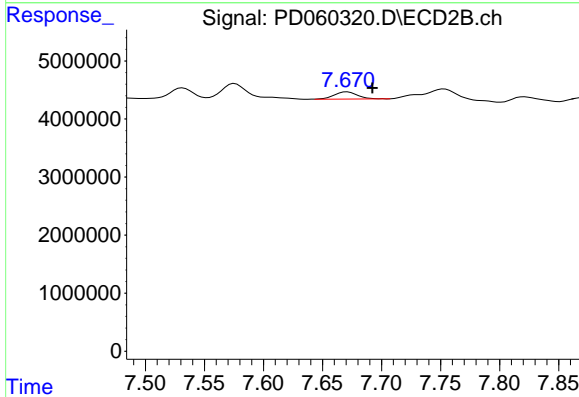


#25 Toxaphene-4
 R.T.: 7.246 min
 Delta R.T.: 0.054 min
 Response: -2147879
 Conc: N.D.

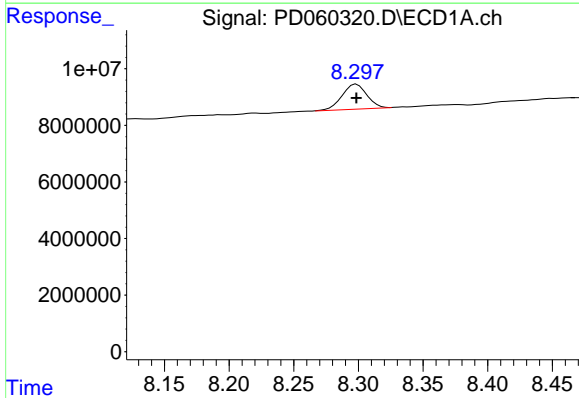


#26 Toxaphene-5
 R.T.: 7.086 min
 Delta R.T.: -0.041 min
 Response: 221457
 Conc: 6.09 ng/ml

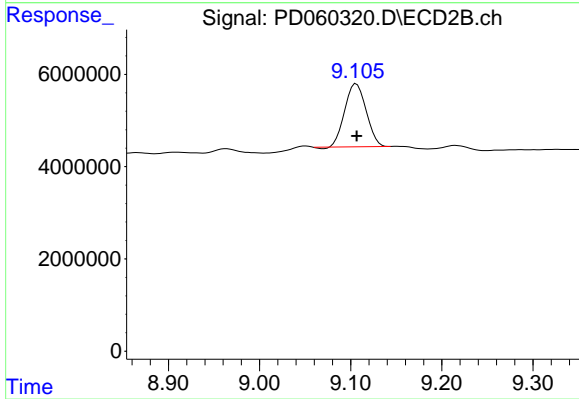
Instrument :
 ECD_D
 ClientSampleId :



#26 Toxaphene-5
 R.T.: 7.671 min
 Delta R.T.: -0.021 min
 Response: 1719280
 Conc: 30.28 ng/ml



#27 Decachlorobiphenyl
 R.T.: 8.298 min
 Delta R.T.: 0.000 min
 Response: 11732927
 Conc: 8.95 ng/ml



#27 Decachlorobiphenyl
 R.T.: 9.106 min
 Delta R.T.: 0.000 min
 Response: 22233904
 Conc: 7.96 ng/ml