

Data Path : Z:\pestpcbsrv\HPCHEM1\ECD_D\Data\PD112520\
 Data File : PD060324.D
 Signal(s) : Signal #1: ECD1A.ch Signal #2: ECD2B.ch
 Acq On : 25 Nov 2020 19:08
 Operator : DD\AJ
 Sample : L4794-01
 Misc :
 ALS Vial : 21 Sample Multiplier: 1

Instrument :
 ECD_D
 ClientSampleId :

Integration File signal 1: autoint1.e
 Integration File signal 2: autoint2.e
 Quant Time: Nov 26 01:36:07 2020
 Quant Method : Z:\pestpcbsrv\HPCHEM1\ECD_D\Method\PD112520CLP.M
 Quant Title : GC Extractables
 QLast Update : Thu Nov 26 01:04:31 2020
 Response via : Initial Calibration
 Integrator: ChemStation

Volume Inj. : 1 µl
 Signal #1 Phase : ZB-MR2 Signal #2 Phase: ZB-MR1
 Signal #1 Info : 30M x 0.32mm x0.2 Signal #2 Info : 30M x 0.32mm x 0.50µm

Compound	RT#1	RT#2	Resp#1	Resp#2	ng/ml	ng/ml

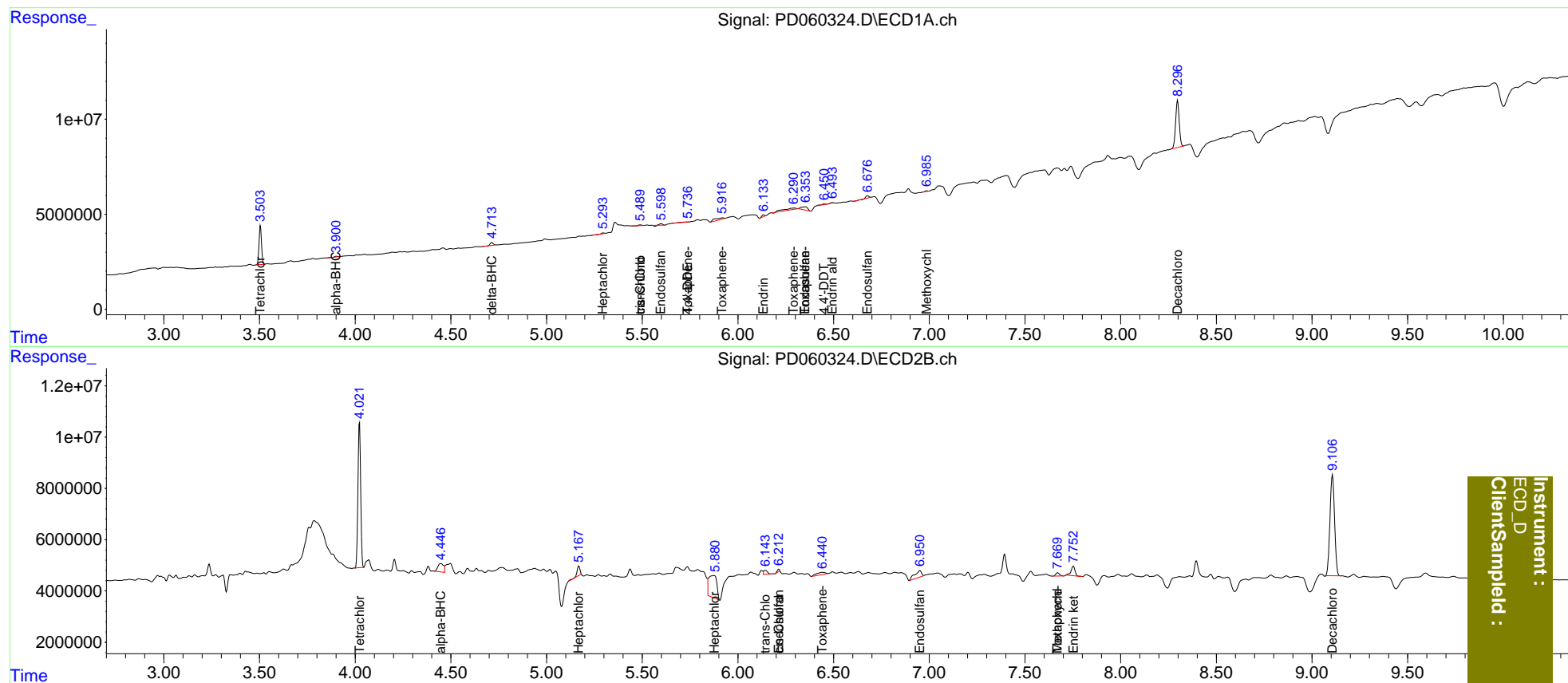
System Monitoring Compounds						
1) SA Tetrachlo...	3.505	4.023	18264922	56057261	16.630	15.525
2) SA Decachlor...	8.298	9.107	32448327	66602718	24.748	23.835
Target Compounds						
2) A alpha-BHC	3.902f	4.447f	772635	6650978	0.448	1.234 #
4) MA Heptachlor	0.000	5.169f	0	4252553	N.D.	0.901
7) B delta-BHC	4.714	0.000	1796569	0	1.077	N.D. #
8) B Heptachlo...	5.296f	5.877	426489	25093751	0.285	7.106 #
9) A Endosulfan I	5.599	6.214f	518033	775286	0.369	0.204 #
10) B trans-Chl...	5.490	6.144	337777	2153191	0.220	0.517 #
11) B cis-Chlor...	5.490	6.214	337777	775286	0.229	0.190
12) B 4,4'-DDE	5.737f	0.000	368534	0	0.240	N.D. #
14) MA Endrin	6.134f	0.000	1004843	0	0.744	N.D. #
15) B Endosulfa...	6.352	6.952	3958413	6346483	3.162	1.971 #
19) B Endosulfa...	6.677f	0.000	1144740	0	1.004	N.D. #
20) A Methoxychlor	6.987	7.671f	337790	1851317	0.546	1.110 #
21) B Endrin ke...	0.000	7.753	0	5506980	N.D.	1.627
22) Toxaphene-1	5.737	6.441	368534	3011498	27.458	118.580 #
23) Toxaphene-2	5.920	0.000	3289278	0	259.210	N.D. #
24) Toxaphene-3	6.293	7.129	4072770	-1682782	270.734	N.D. #
25) Toxaphene-4	6.352	7.129	3958413	-1682782	116.028	N.D. #
26) Toxaphene-5	0.000	7.671	0	1851317	N.D.	32.604

(f)=RT Delta > 1/2 Window (#)=Amounts differ by > 25% (m)=manual int.

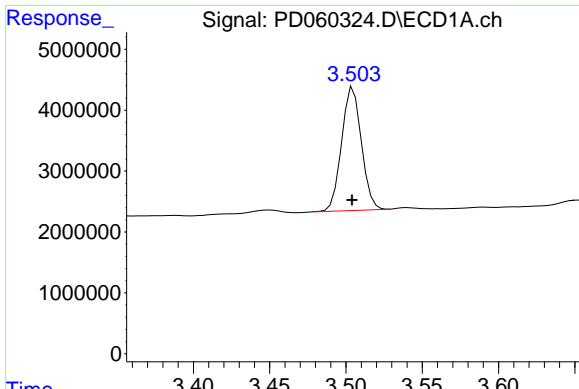
Data Path : Z:\pestpcbsrv\HPCHEM1\ECD_D\Data\PD112520\
 Data File : PD060324.D
 Signal(s) : Signal #1: ECD1A.ch Signal #2: ECD2B.ch
 Acq On : 25 Nov 2020 19:08
 Operator : DD\AJ
 Sample : L4794-01
 Misc :
 ALS Vial : 21 Sample Multiplier: 1

Integration File signal 1: autoint1.e
 Integration File signal 2: autoint2.e
 Quant Time: Nov 26 01:36:07 2020
 Quant Method : Z:\pestpcbsrv\HPCHEM1\ECD_D\Method\PD112520CLP.M
 Quant Title : GC Extractables
 QLast Update : Thu Nov 26 01:04:31 2020
 Response via : Initial Calibration
 Integrator: ChemStation

Volume Inj. : 1 µl
 Signal #1 Phase : ZB-MR2 Signal #2 Phase: ZB-MR1
 Signal #1 Info : 30M x 0.32mm x0.2 Signal #2 Info : 30M x 0.32mm x 0.50µm

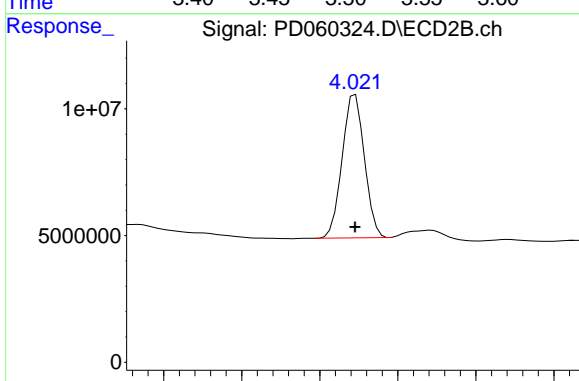


Instrument :
 ECD_D
 ClientSampleId :

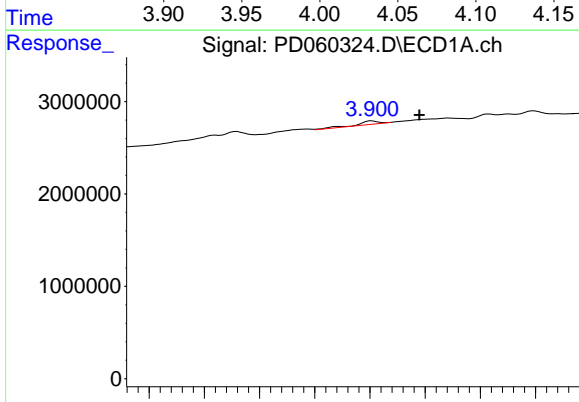


#1 Tetrachloro-m-xylene
 R.T.: 3.505 min
 Delta R.T.: 0.000 min
 Response: 18264922
 Conc: 16.63 ng/ml

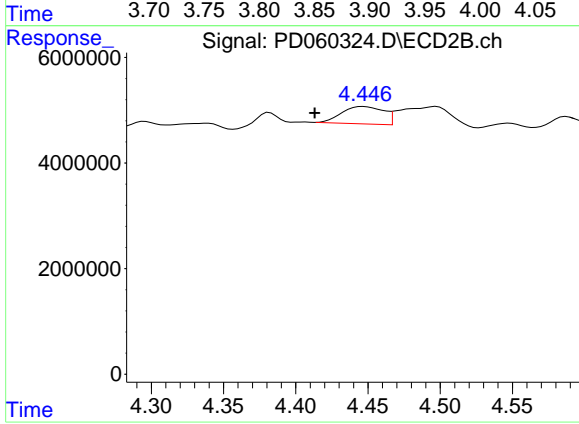
Instrument :
 ECD_D
 ClientSampleId :



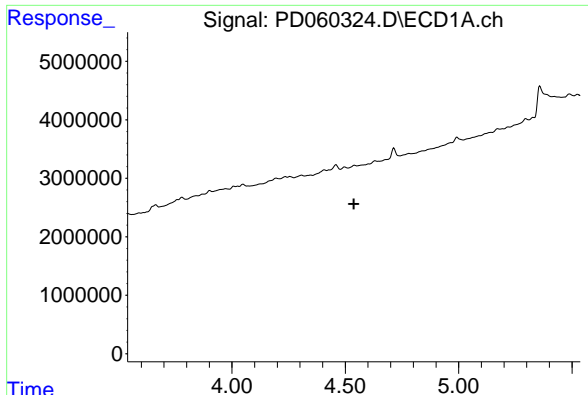
#1 Tetrachloro-m-xylene
 R.T.: 4.023 min
 Delta R.T.: 0.000 min
 Response: 56057261
 Conc: 15.53 ng/ml



#2 alpha-BHC
 R.T.: 3.902 min
 Delta R.T.: -0.043 min
 Response: 772635
 Conc: 0.45 ng/ml



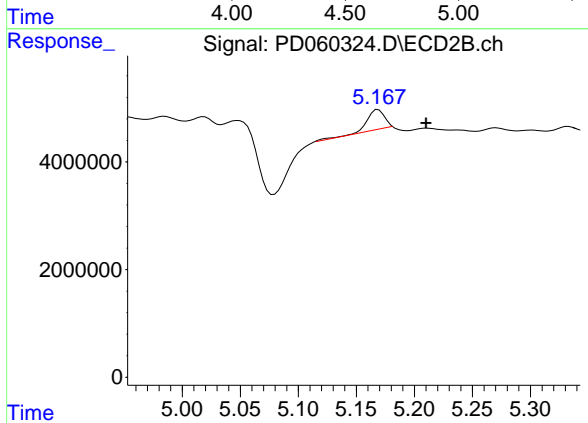
#2 alpha-BHC
 R.T.: 4.447 min
 Delta R.T.: 0.033 min
 Response: 6650978
 Conc: 1.23 ng/ml



#4 Heptachlor

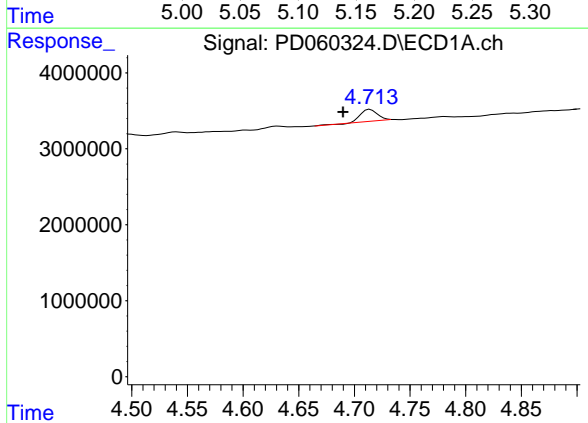
R.T.: 0.000 min
 Exp R.T.: 4.538 min
 Response: 0
 Conc: N.D.

Instrument :
 ECD_D
 ClientSampleId :



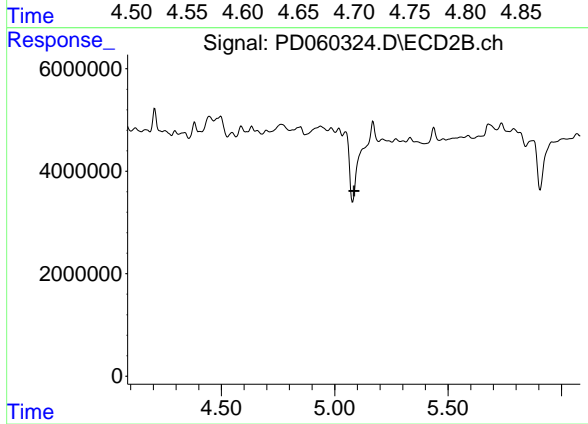
#4 Heptachlor

R.T.: 5.169 min
 Delta R.T.: -0.041 min
 Response: 4252553
 Conc: 0.90 ng/ml



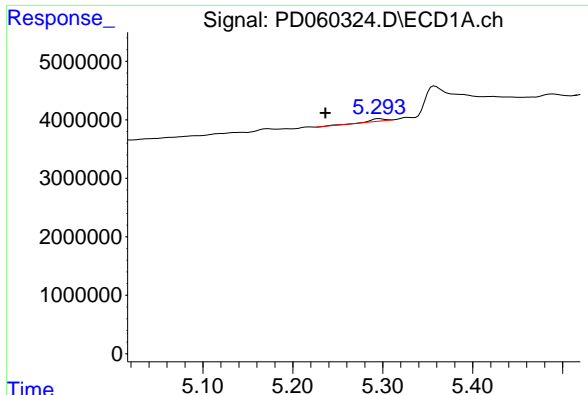
#7 delta-BHC

R.T.: 4.714 min
 Delta R.T.: 0.024 min
 Response: 1796569
 Conc: 1.08 ng/ml



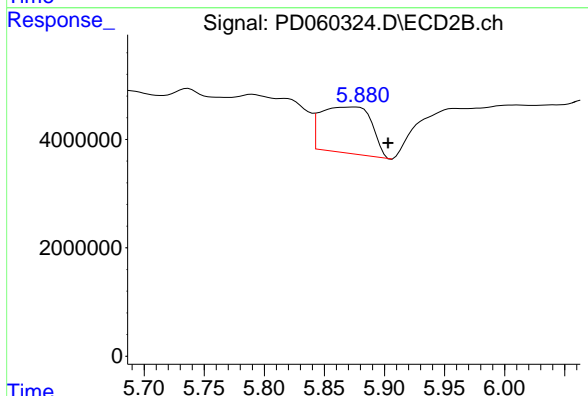
#7 delta-BHC

R.T.: 0.000 min
 Exp R.T.: 5.085 min
 Response: 0
 Conc: N.D.

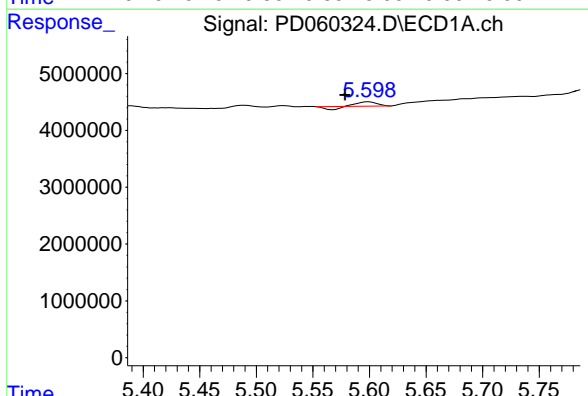


#8 Heptachlor epoxide
 R.T.: 5.296 min
 Delta R.T.: 0.060 min
 Response: 426489
 Conc: 0.28 ng/ml

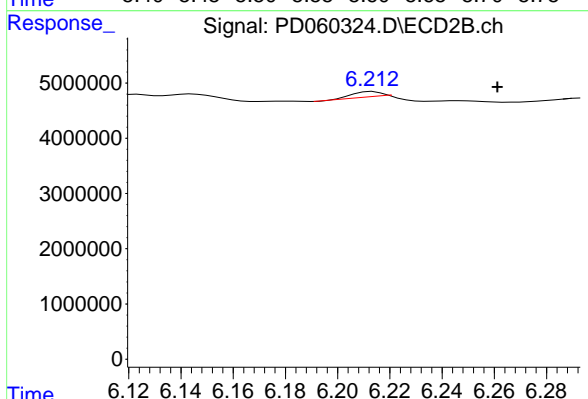
Instrument :
 ECD_D
 ClientSampleId :



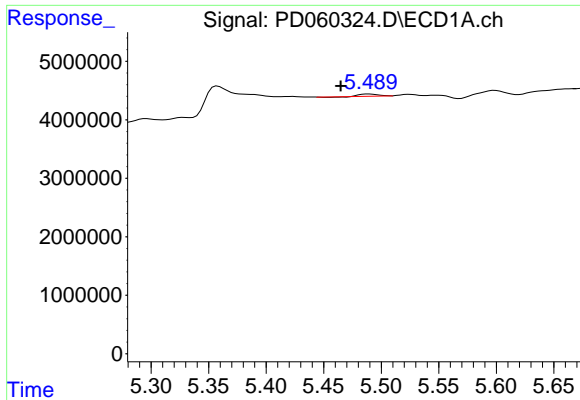
#8 Heptachlor epoxide
 R.T.: 5.877 min
 Delta R.T.: -0.027 min
 Response: 25093751
 Conc: 7.11 ng/ml



#9 Endosulfan I
 R.T.: 5.599 min
 Delta R.T.: 0.021 min
 Response: 518033
 Conc: 0.37 ng/ml

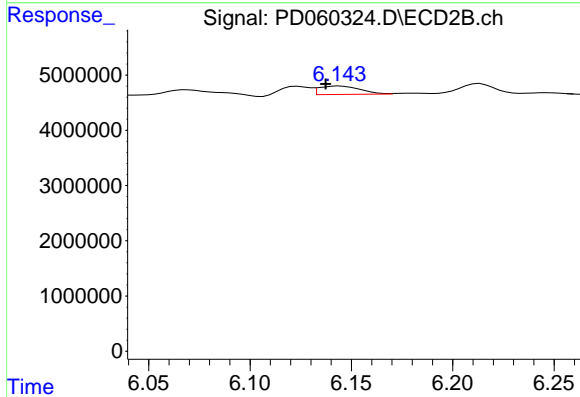


#9 Endosulfan I
 R.T.: 6.214 min
 Delta R.T.: -0.048 min
 Response: 775286
 Conc: 0.20 ng/ml

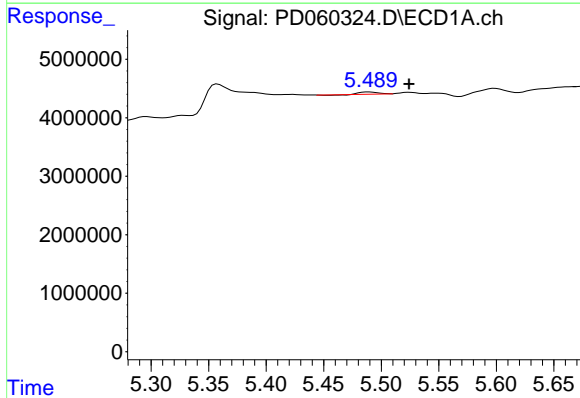


#10 trans-Chlordane
 R.T.: 5.490 min
 Delta R.T.: 0.025 min
 Response: 337777
 Conc: 0.22 ng/ml

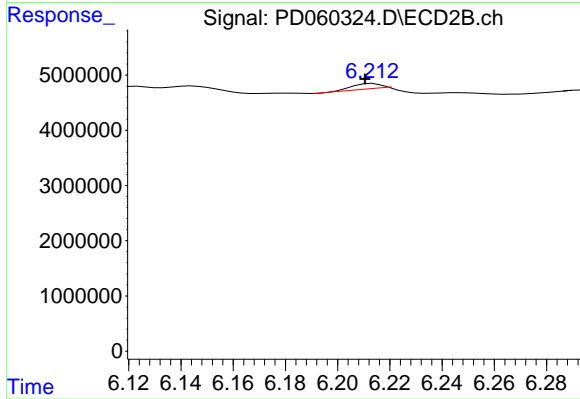
Instrument :
 ECD_D
 ClientSampled :



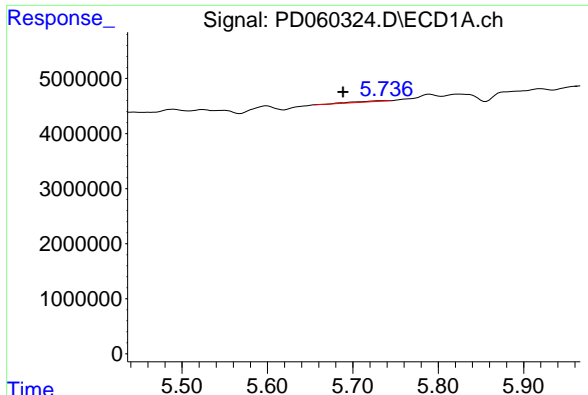
#10 trans-Chlordane
 R.T.: 6.144 min
 Delta R.T.: 0.007 min
 Response: 2153191
 Conc: 0.52 ng/ml



#11 cis-Chlordane
 R.T.: 5.490 min
 Delta R.T.: -0.034 min
 Response: 337777
 Conc: 0.23 ng/ml

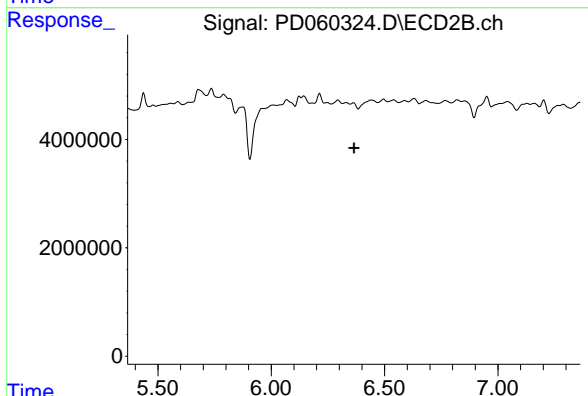


#11 cis-Chlordane
 R.T.: 6.214 min
 Delta R.T.: 0.003 min
 Response: 775286
 Conc: 0.19 ng/ml

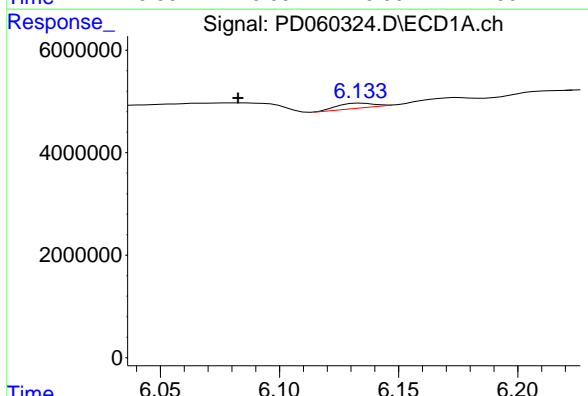


#12 4,4'-DDE
 R.T.: 5.737 min
 Delta R.T.: 0.049 min
 Response: 368534
 Conc: 0.24 ng/ml

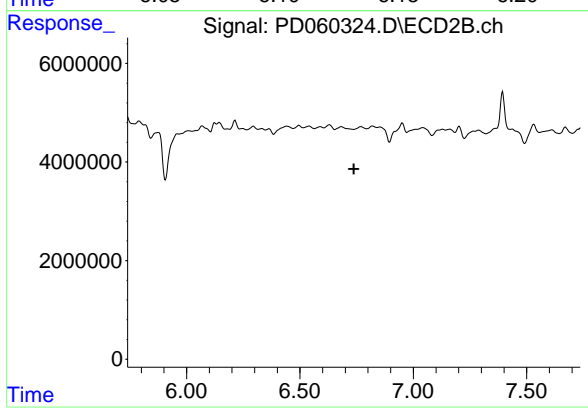
Instrument :
 ECD_D
 ClientSampleId :



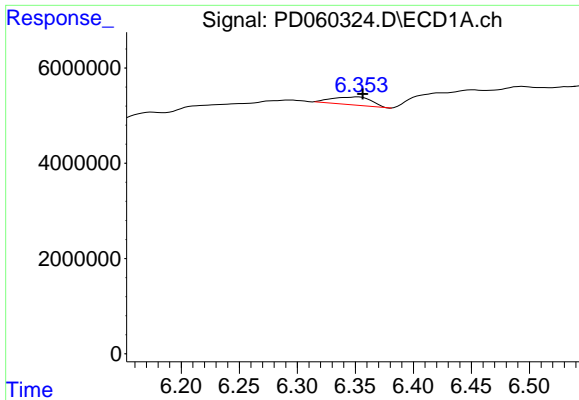
#12 4,4'-DDE
 R.T.: 0.000 min
 Exp R.T. : 6.366 min
 Response: 0
 Conc: N.D.



#14 Endrin
 R.T.: 6.134 min
 Delta R.T.: 0.052 min
 Response: 1004843
 Conc: 0.74 ng/ml

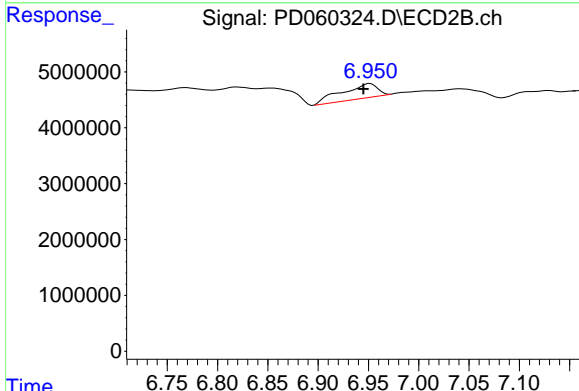


#14 Endrin
 R.T.: 0.000 min
 Exp R.T. : 6.737 min
 Response: 0
 Conc: N.D.

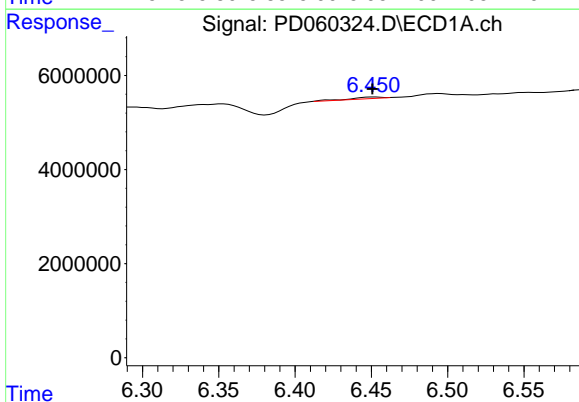


#15 Endosulfan II
 R.T.: 6.352 min
 Delta R.T.: -0.004 min
 Response: 3958413
 Conc: 3.16 ng/ml

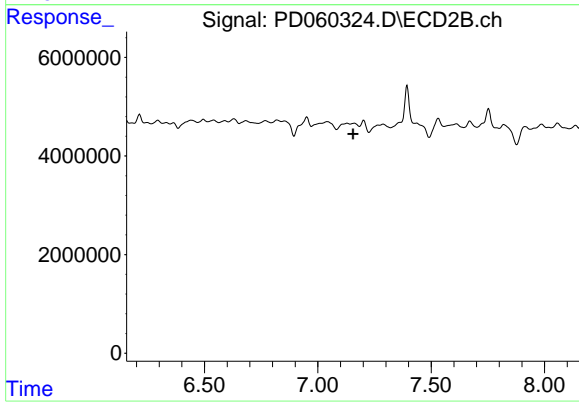
Instrument :
 ECD_D
 ClientSampleId :



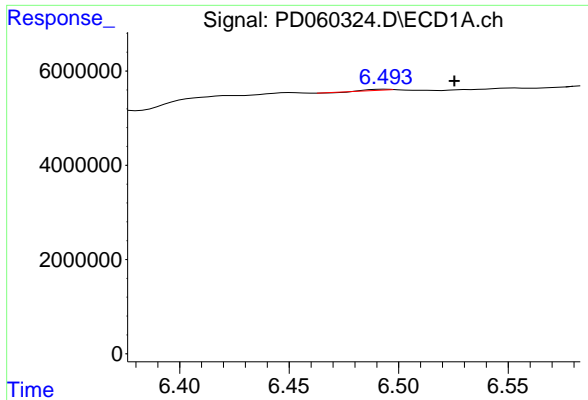
#15 Endosulfan II
 R.T.: 6.952 min
 Delta R.T.: 0.007 min
 Response: 6346483
 Conc: 1.97 ng/ml



#17 4,4'-DDT
 R.T.: 6.452 min
 Delta R.T.: 0.001 min
 Response: 461107
 Conc: 0.35 ng/ml



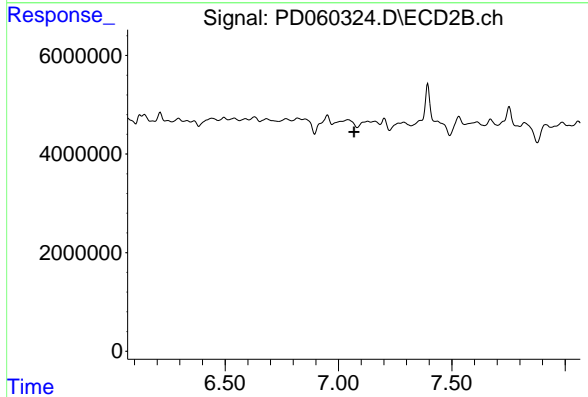
#17 4,4'-DDT
 R.T.: 7.129 min
 Delta R.T.: -0.027 min
 Response: -1682782
 Conc: N.D.



#18 Endrin aldehyde

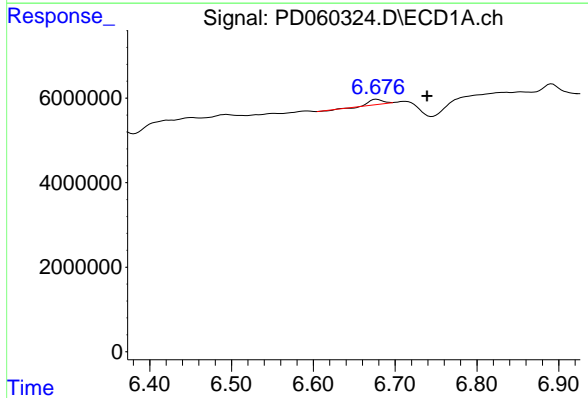
R.T.: 6.494 min
 Delta R.T.: -0.031 min
 Response: 200611
 Conc: 0.20 ng/ml

Instrument :
 ECD_D
 ClientSampleId :



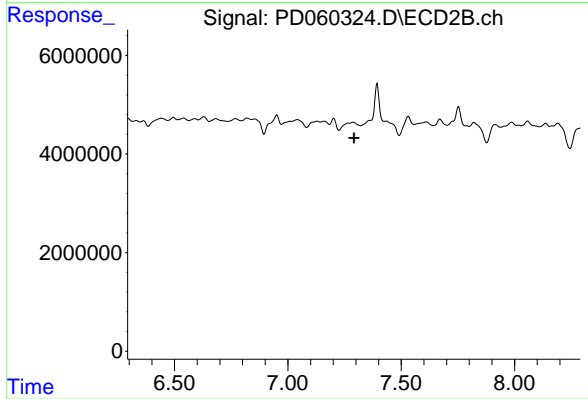
#18 Endrin aldehyde

R.T.: 7.129 min
 Delta R.T.: 0.060 min
 Response: -1682782
 Conc: N.D.



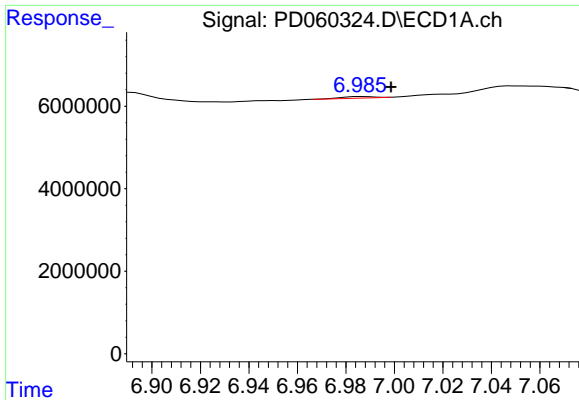
#19 Endosulfan Sulfate

R.T.: 6.677 min
 Delta R.T.: -0.062 min
 Response: 1144740
 Conc: 1.00 ng/ml



#19 Endosulfan Sulfate

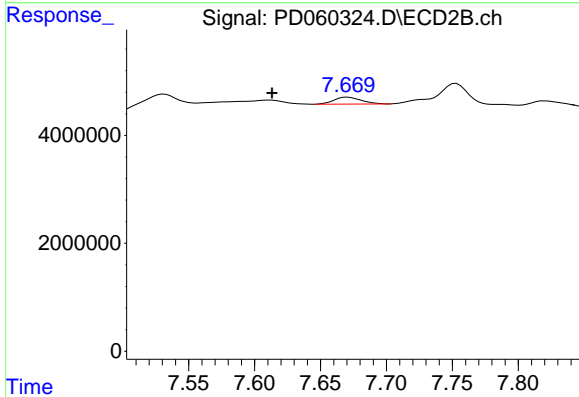
R.T.: 0.000 min
 Exp R.T. : 7.292 min
 Response: 0
 Conc: N.D.



#20 Methoxychlor

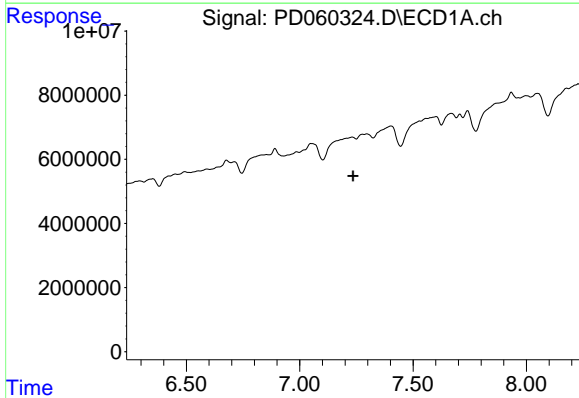
R.T.: 6.987 min
 Delta R.T.: -0.012 min
 Response: 337790
 Conc: 0.55 ng/ml

Instrument :
 ECD_D
 ClientSampled :



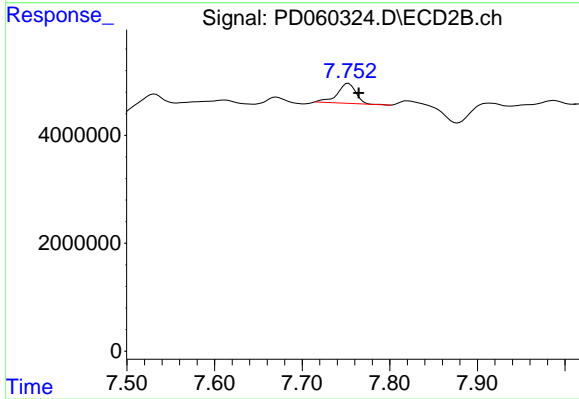
#20 Methoxychlor

R.T.: 7.671 min
 Delta R.T.: 0.057 min
 Response: 1851317
 Conc: 1.11 ng/ml



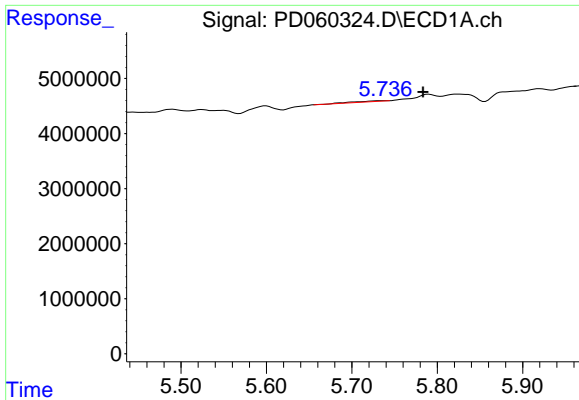
#21 Endrin ketone

R.T.: 0.000 min
 Exp R.T. : 7.236 min
 Response: 0
 Conc: N.D.



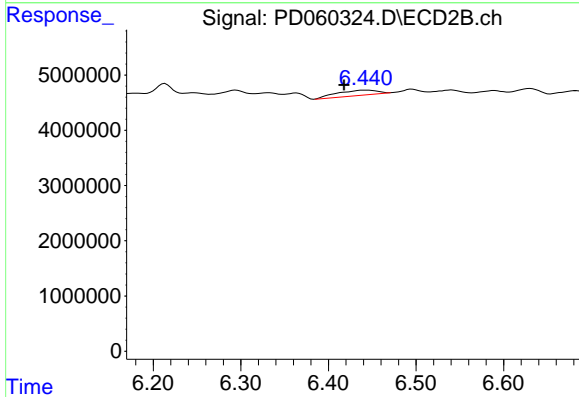
#21 Endrin ketone

R.T.: 7.753 min
 Delta R.T.: -0.011 min
 Response: 5506980
 Conc: 1.63 ng/ml

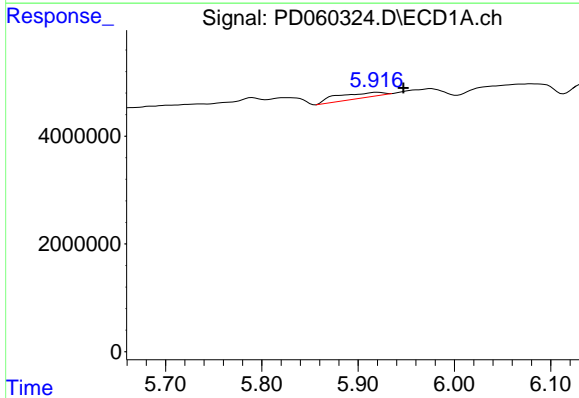


#22 Toxaphene-1
 R.T.: 5.737 min
 Delta R.T.: -0.046 min
 Response: 368534
 Conc: 27.46 ng/ml

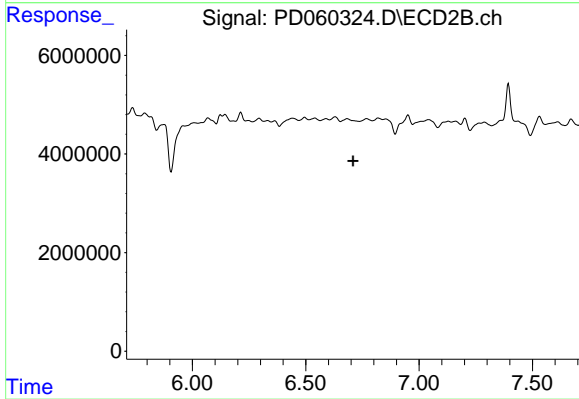
Instrument :
 ECD_D
 ClientSampled :



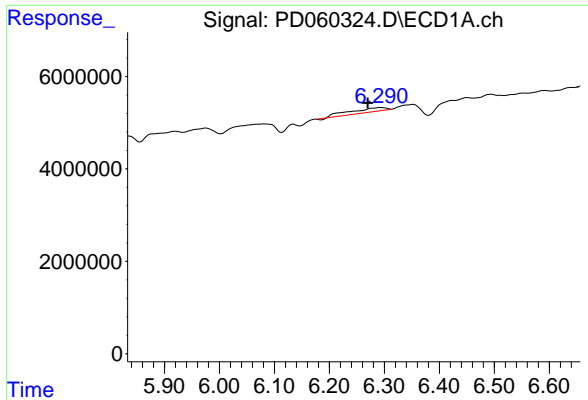
#22 Toxaphene-1
 R.T.: 6.441 min
 Delta R.T.: 0.023 min
 Response: 3011498
 Conc: 118.58 ng/ml



#23 Toxaphene-2
 R.T.: 5.920 min
 Delta R.T.: -0.027 min
 Response: 3289278
 Conc: 259.21 ng/ml



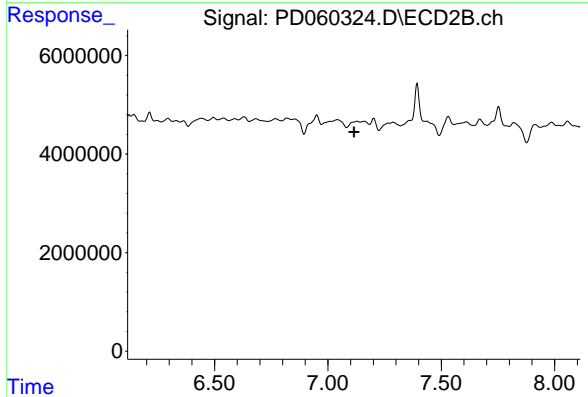
#23 Toxaphene-2
 R.T.: 0.000 min
 Exp R.T.: 6.708 min
 Response: 0
 Conc: N.D.



#24 Toxaphene-3

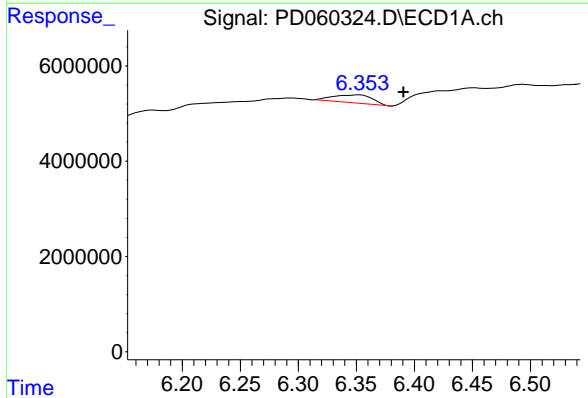
R.T.: 6.293 min
 Delta R.T.: 0.024 min
 Response: 4072770
 Conc: 270.73 ng/ml

Instrument :
 ECD_D
 ClientSampled :



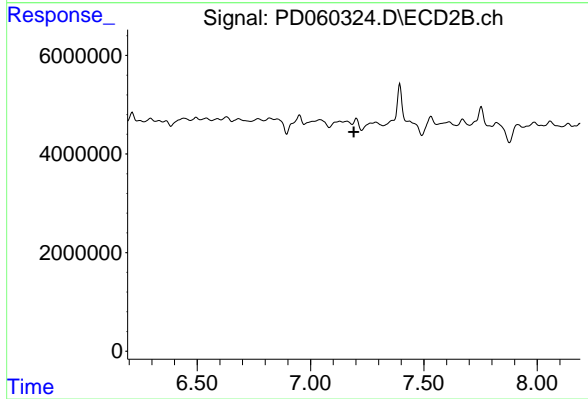
#24 Toxaphene-3

R.T.: 7.129 min
 Delta R.T.: 0.013 min
 Response: -1682782
 Conc: N.D.



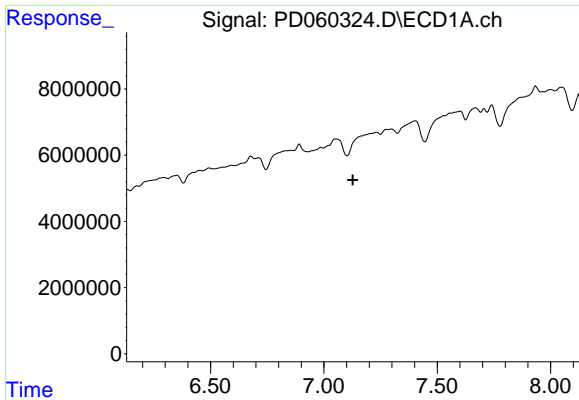
#25 Toxaphene-4

R.T.: 6.352 min
 Delta R.T.: -0.038 min
 Response: 3958413
 Conc: 116.03 ng/ml



#25 Toxaphene-4

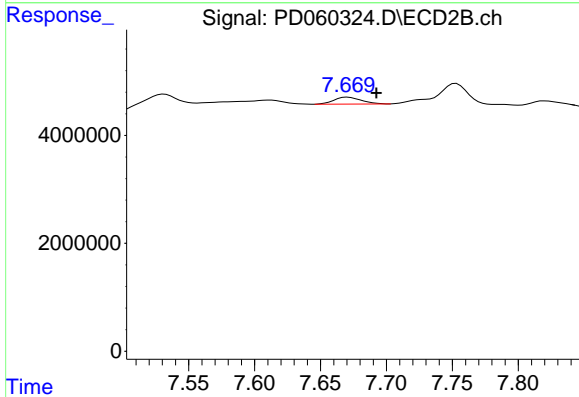
R.T.: 7.129 min
 Delta R.T.: -0.062 min
 Response: -1682782
 Conc: N.D.



#26 Toxaphene-5

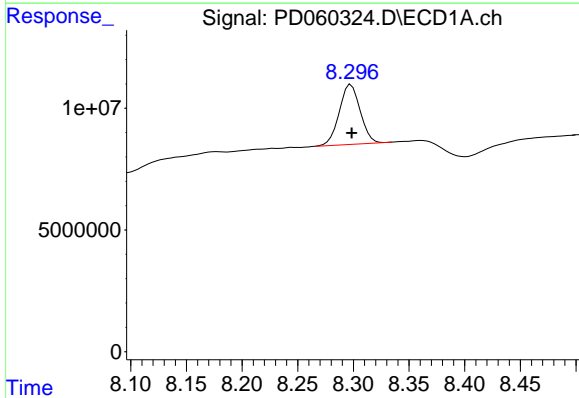
R.T.: 0.000 min
 Exp R.T.: 7.127 min
 Response: 0
 Conc: N.D.

Instrument :
 ECD_D
 ClientSampleId :



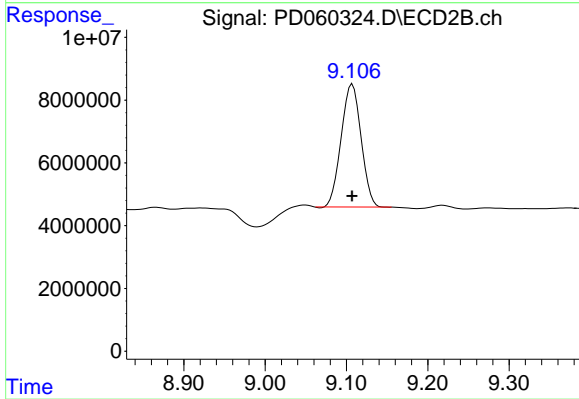
#26 Toxaphene-5

R.T.: 7.671 min
 Delta R.T.: -0.022 min
 Response: 1851317
 Conc: 32.60 ng/ml



#27 Decachlorobiphenyl

R.T.: 8.298 min
 Delta R.T.: 0.000 min
 Response: 32448327
 Conc: 24.75 ng/ml



#27 Decachlorobiphenyl

R.T.: 9.107 min
 Delta R.T.: 0.000 min
 Response: 66602718
 Conc: 23.84 ng/ml