

Data Path : Z:\pestpcbsrv\HPCHEM1\ECD\_D\Data\PD112520\  
 Data File : PD060289.D  
 Signal(s) : Signal #1: ECD1A.ch Signal #2: ECD2B.ch  
 Acq On : 25 Nov 2020 10:55  
 Operator : DD\AJ  
 Sample : TOXAPH501  
 Misc :  
 ALS Vial : 8 Sample Multiplier: 1

Instrument :  
 ECD\_D  
 ClientSampleId :  
 TOXAPH501

Integration File signal 1: autoint1.e  
 Integration File signal 2: autoint2.e  
 Quant Time: Nov 26 00:35:51 2020  
 Quant Method : Z:\pestpcbsrv\HPCHEM1\ECD\_D\Method\PD112520CLP.M  
 Quant Title : GC Extractables  
 QLast Update : Thu Nov 26 00:33:52 2020  
 Response via : Initial Calibration  
 Integrator: ChemStation

Volume Inj. : 1 µl  
 Signal #1 Phase : ZB-MR2 Signal #2 Phase: ZB-MR1  
 Signal #1 Info : 30M x 0.32mm x0.2 Signal #2 Info : 30M x 0.32mm x 0.50µm

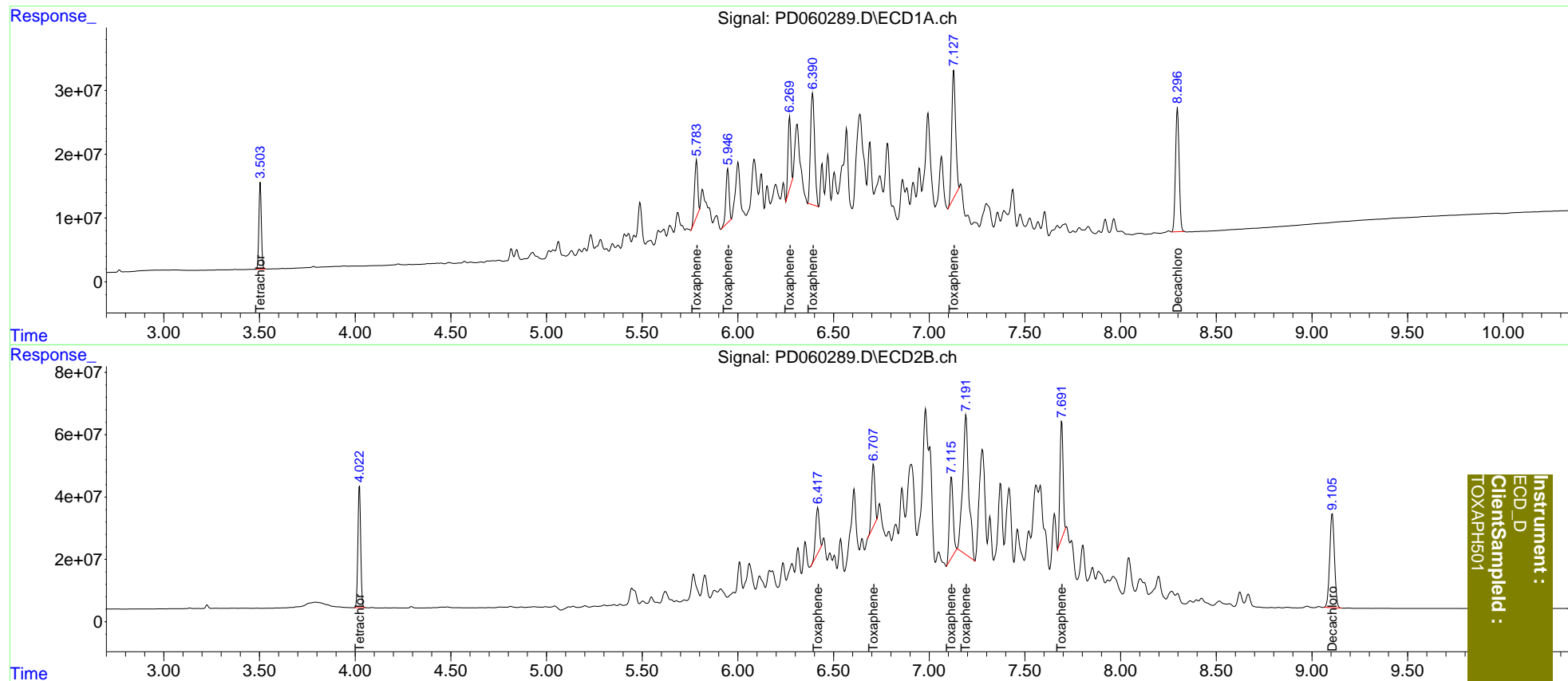
Compound	RT#1	RT#2	Resp#1	Resp#2	ng/ml	ng/ml
-----						
System Monitoring Compounds						
1) SA Tetrachlo...	3.504	4.023	120.2E6	395.6E6	76.483	76.104
27) SA Decachlor...	8.298	9.106	257.3E6	525.3E6	148.961	146.667
Target Compounds						
22) Toxaphene-1	5.784	6.418	101.2E6	193.1E6	7553.877	7464.176
23) Toxaphene-2	5.947	6.709	97133693	235.2E6	7398.130	7417.881
24) Toxaphene-3	6.271	7.116	114.1E6	350.7E6	7540.846	7653.115
25) Toxaphene-4	6.391	7.192	264.1E6	988.3E6	7700.975	7668.033
26) Toxaphene-5	7.128	7.693	281.0E6	423.3E6	7703.171	7387.833
-----						

(f)=RT Delta > 1/2 Window (#)=Amounts differ by > 25% (m)=manual int.

Data Path : Z:\pestpcbsrv\HPCHEM1\ECD\_D\Data\PD112520\  
 Data File : PD060289.D  
 Signal(s) : Signal #1: ECD1A.ch Signal #2: ECD2B.ch  
 Acq On : 25 Nov 2020 10:55  
 Operator : DD\AJ  
 Sample : TOXAPH501  
 Misc :  
 ALS Vial : 8 Sample Multiplier: 1

Integration File signal 1: autoint1.e  
 Integration File signal 2: autoint2.e  
 Quant Time: Nov 26 00:35:51 2020  
 Quant Method : Z:\pestpcbsrv\HPCHEM1\ECD\_D\Method\PD112520CLP.M  
 Quant Title : GC Extractables  
 QLast Update : Thu Nov 26 00:33:52 2020  
 Response via : Initial Calibration  
 Integrator: ChemStation

Volume Inj. : 1 µl  
 Signal #1 Phase : ZB-MR2 Signal #2 Phase: ZB-MR1  
 Signal #1 Info : 30M x 0.32mm x0.2 Signal #2 Info : 30M x 0.32mm x 0.50µm



Instrument :  
 ECD\_D  
 ClientSampleId :  
 TOXAPH501