

Data Path : Z:\pestpcbsrv\HPCHEM1\ECD_D\Data\PD112720\
 Data File : PD060340.D
 Signal(s) : Signal #1: ECD1A.ch Signal #2: ECD2B.ch
 Acq On : 27 Nov 2020 14:37
 Operator : DD\AJ
 Sample : TOXAPH201
 Misc :
 ALS Vial : 5 Sample Multiplier: 1

Instrument :
 ECD_D
 ClientSampled :
 TOXAPH201

Integration File signal 1: autoint1.e
 Integration File signal 2: autoint2.e
 Quant Time: Nov 28 00:28:22 2020
 Quant Method : Z:\pestpcbsrv\HPCHEM1\ECD_D\Method\PD112720CLP.M
 Quant Title : GC Extractables
 QLast Update : Sat Nov 28 00:26:23 2020
 Response via : Initial Calibration
 Integrator: ChemStation

Volume Inj. : 1 µl
 Signal #1 Phase : ZB-MR2 Signal #2 Phase: ZB-MR1
 Signal #1 Info : 30M x 0.32mm x0.2 Signal #2 Info : 30M x 0.32mm x 0.50µm

Compound	RT#1	RT#2	Resp#1	Resp#2	ng/ml	ng/ml

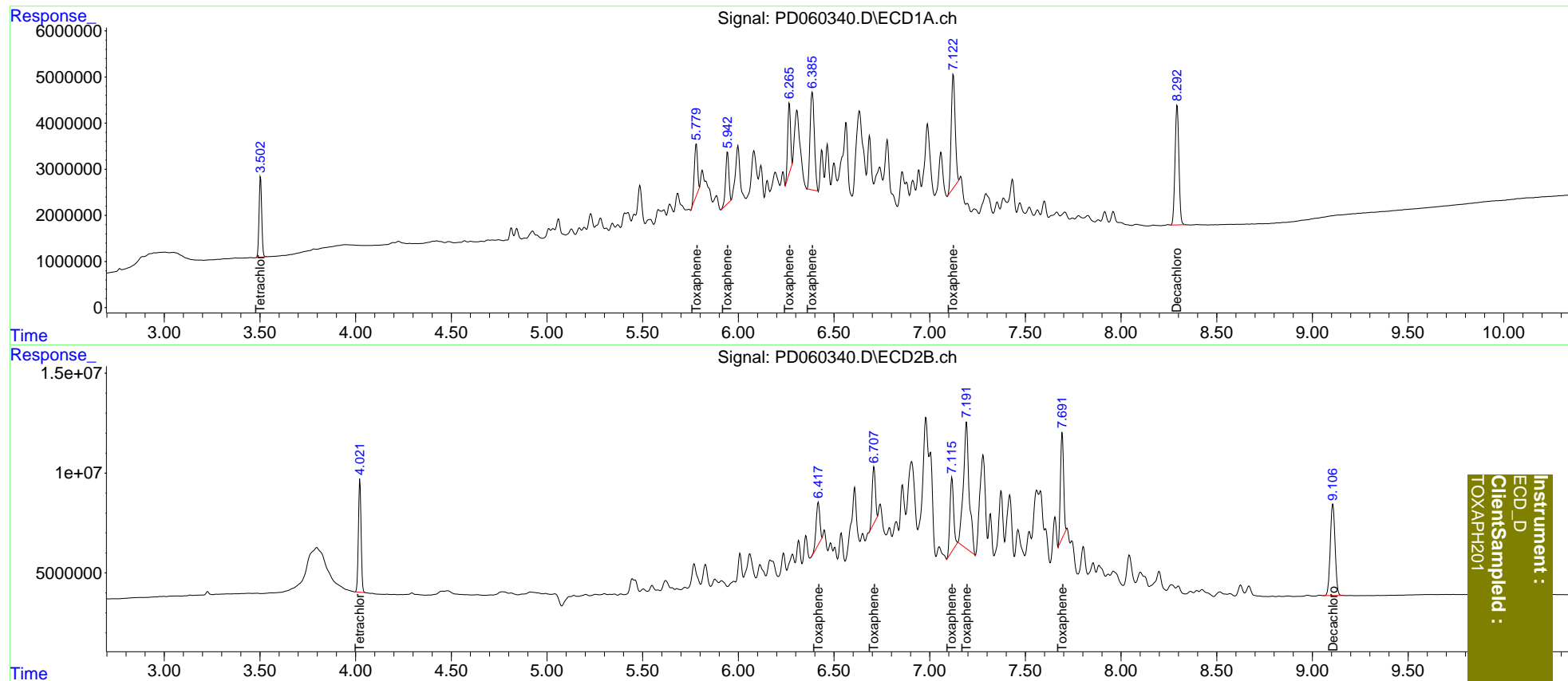
System Monitoring Compounds						
1) SA Tetrachlo...	3.503	4.023	16821225	55155273	10.403	10.215
27) SA Decachlor...	8.294	9.107	36502044	80709646	21.087	21.095
Target Compounds						
22) Toxaphene-1	5.781	6.418	12879887	27986182	1013.835	1060.134
23) Toxaphene-2	5.944	6.709	13087779	32779388	1012.885	1028.935
24) Toxaphene-3	6.267	7.116	15210100	48984835	1050.225	1004.204
25) Toxaphene-4	6.387	7.192	33437480	133.4E6	1003.016	1007.675
26) Toxaphene-5	7.123	7.693	35273890	61727784	999.361	1061.071

(f)=RT Delta > 1/2 Window (#)=Amounts differ by > 25% (m)=manual int.

Data Path : Z:\pestpcbsrv\HPCHEM1\ECD_D\Data\PD112720\
 Data File : PD060340.D
 Signal(s) : Signal #1: ECD1A.ch Signal #2: ECD2B.ch
 Acq On : 27 Nov 2020 14:37
 Operator : DD\AJ
 Sample : TOXAPH201
 Misc :
 ALS Vial : 5 Sample Multiplier: 1

Integration File signal 1: autoint1.e
 Integration File signal 2: autoint2.e
 Quant Time: Nov 28 00:28:22 2020
 Quant Method : Z:\pestpcbsrv\HPCHEM1\ECD_D\Method\PD112720CLP.M
 Quant Title : GC Extractables
 QLast Update : Sat Nov 28 00:26:23 2020
 Response via : Initial Calibration
 Integrator: ChemStation

Volume Inj. : 1 µl
 Signal #1 Phase : ZB-MR2 Signal #2 Phase: ZB-MR1
 Signal #1 Info : 30M x 0.32mm x 0.2 Signal #2 Info : 30M x 0.32mm x 0.50µm



Instrument :
 ECD_D
 ClientSampleId :
 TOXAPH201