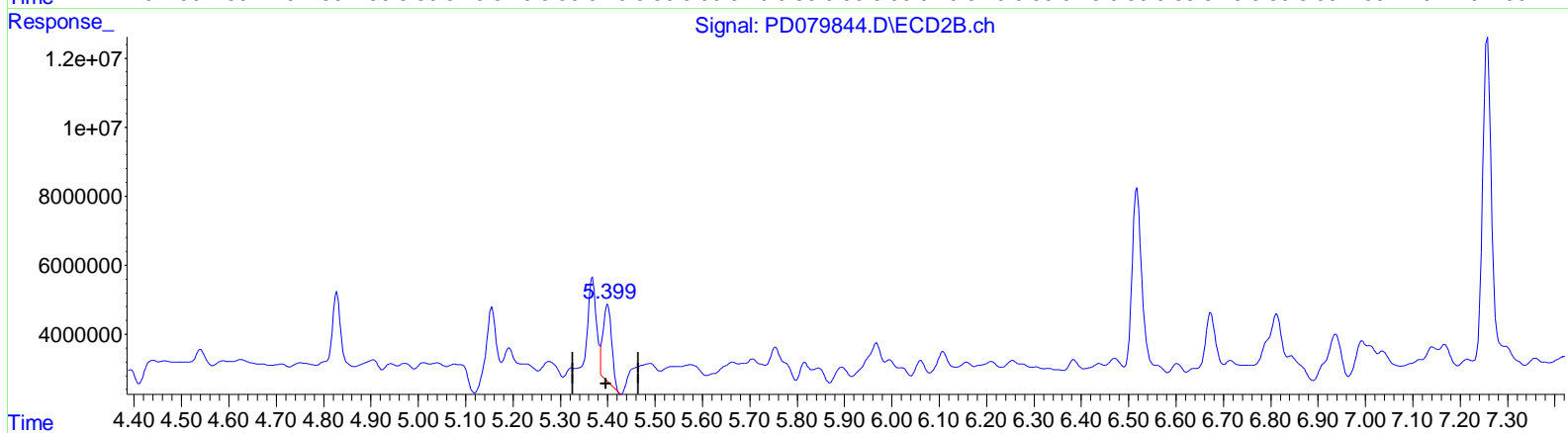
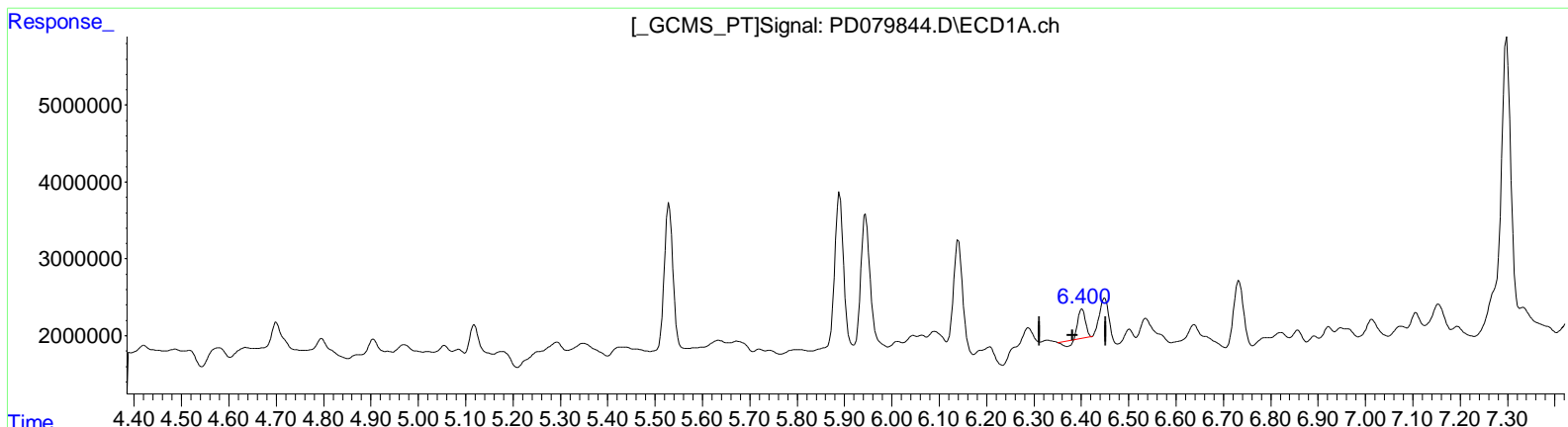


Data Path : Z:\pestpcbsrv\HPCHEM1\ECD_D\Data\PD112723\
 Data File : PD079844.D
 Signal(s) : Signal #1: ECD1A.ch Signal #2: ECD2B.ch
 Acq On : 27 Nov 2023 14:14
 Operator : ARVAJ
 Sample : 05455-04
 Misc :
 ALS Vial : 11 Sample Multiplier: 1

Integration File signal 1: autoint1.e
 Integration File signal 2: autoint2.e
 Quant Time: Nov 27 20:16:58 2023
 Quant Method : Z:\pestpcbsrv\HPCHEM1\ECD_D\Method\PD110623CLP.M
 Quant Title : GC Extractables
 QLast Update : Sat Nov 04 07:14:58 2023
 Response via : Initial Calibration
 Integrator: ChemStation

Volume Inj. : 1 µl
 Signal #1 Phase : ZB-MR1 Signal #2 Phase: ZB-MR2
 Signal #1 Info : 30M x 0.32mm x 0.5 Signal #2 Info : 30M x 0.32mm x 0.25µm



QEdit

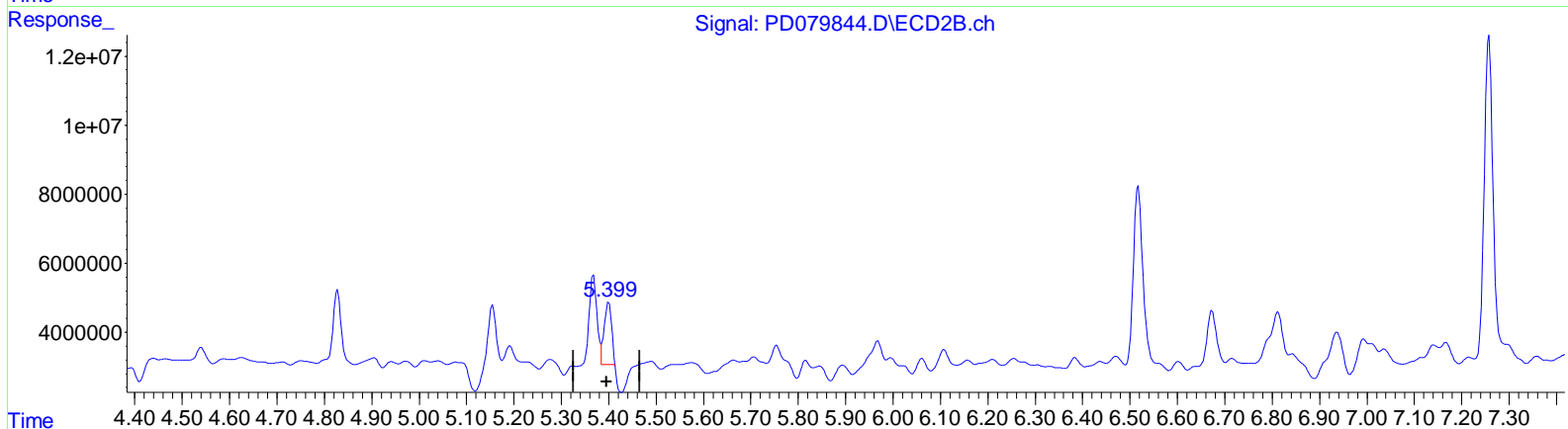
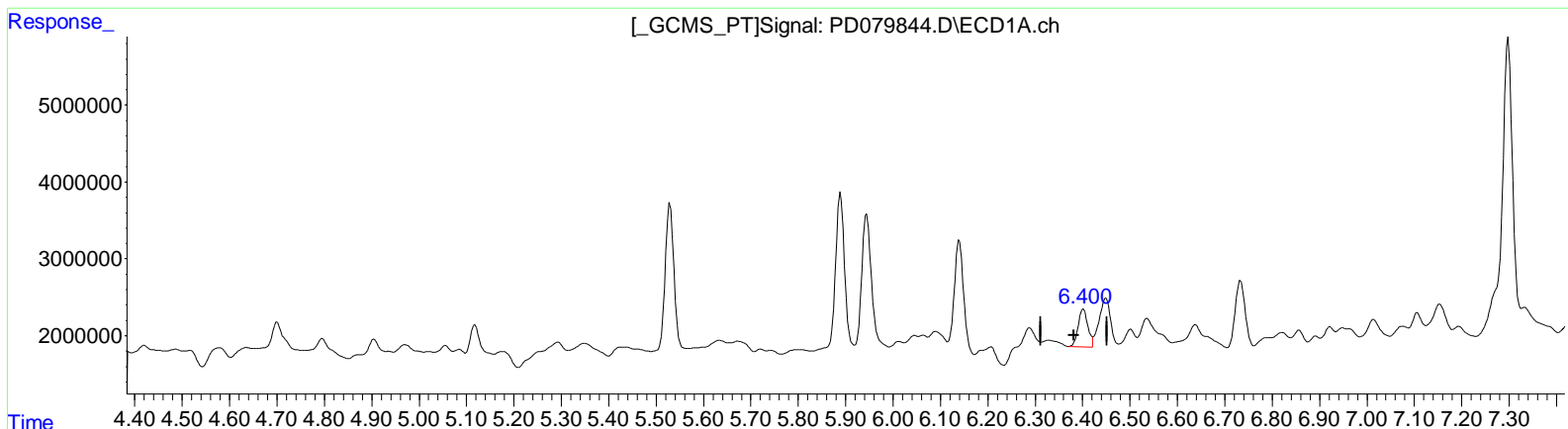
(13) Dieldrin (MA)
 6.402min 1.593 ng/ml
 response 3505203

(13) Dieldrin #2 (MA)
 5.400min 8.938 ng/ml
 response 28461424

Data Path : Z:\pestpcbsrv\HPCHEM1\ECD_D\Data\PD112723\
 Data File : PD079844.D
 Signal(s) : Signal #1: ECD1A.ch Signal #2: ECD2B.ch
 Acq On : 27 Nov 2023 14:14
 Operator : ARVAJ
 Sample : 05455-04
 Misc :
 ALS Vial : 11 Sample Multiplier: 1

Integration File signal 1: autoint1.e
 Integration File signal 2: autoint2.e
 Quant Time: Nov 27 20:16:58 2023
 Quant Method : Z:\pestpcbsrv\HPCHEM1\ECD_D\Method\PD110623CLP.M
 Quant Title : GC Extractables
 QLast Update : Sat Nov 04 07:14:58 2023
 Response via : Initial Calibration
 Integrator: ChemStation

Volume Inj. : 1 µl
 Signal #1 Phase : ZB-MR1 Signal #2 Phase: ZB-MR2
 Signal #1 Info : 30M x 0.32mm x 0.5 Signal #2 Info : 30M x 0.32mm x 0.25µm



QEdit

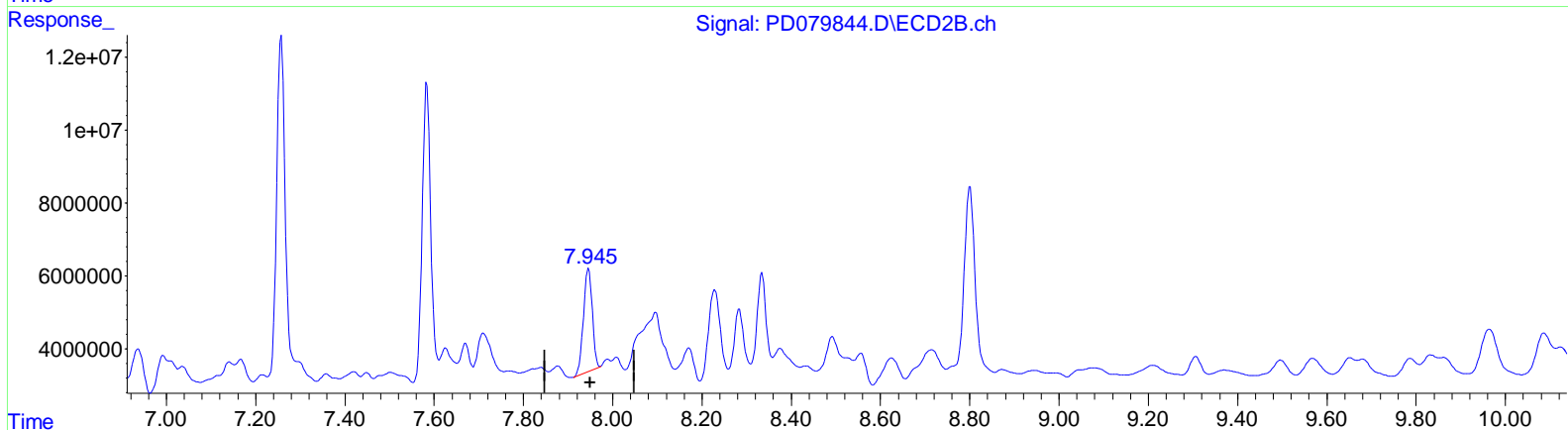
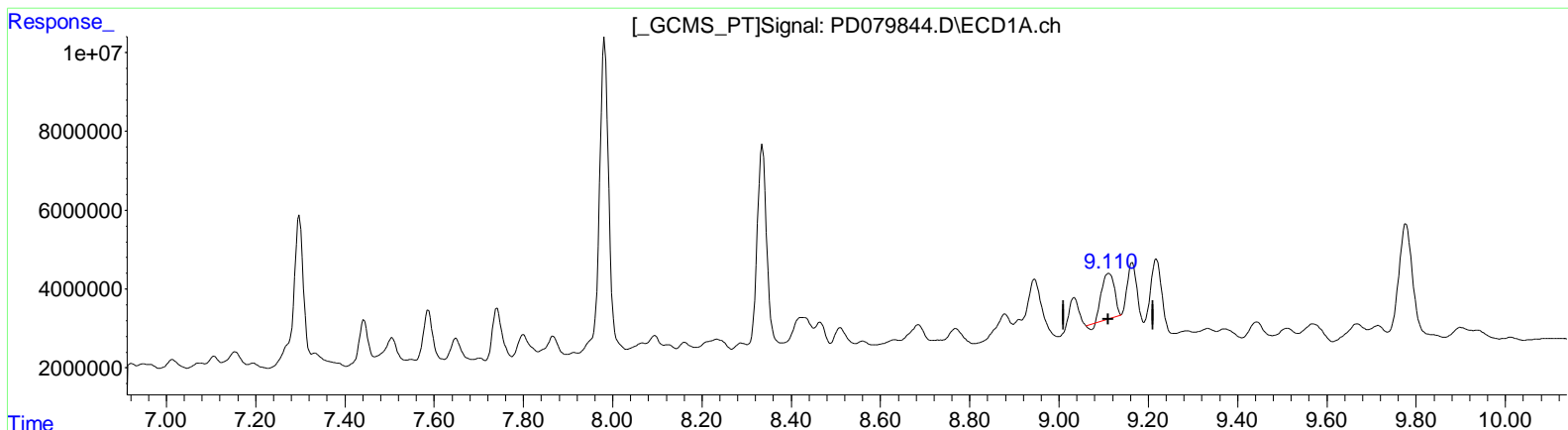
(13) Dieldrin (MA)
 6.400min 3.100 ng/ml m
 response 6820618

(13) Dieldrin #2 (MA)
 5.399min 6.193 ng/ml m
 response 19719084

Data Path : Z:\pestpcbsrv\HPCHEM1\ECD_D\Data\PD112723\
 Data File : PD079844.D
 Signal(s) : Signal #1: ECD1A.ch Signal #2: ECD2B.ch
 Acq On : 27 Nov 2023 14:14
 Operator : ARVAJ
 Sample : 05455-04
 Misc :
 ALS Vial : 11 Sample Multiplier: 1

Integration File signal 1: autoint1.e
 Integration File signal 2: autoint2.e
 Quant Time: Nov 27 20:16:58 2023
 Quant Method : Z:\pestpcbsrv\HPCHEM1\ECD_D\Method\PD110623CLP.M
 Quant Title : GC Extractables
 QLast Update : Sat Nov 04 07:14:58 2023
 Response via : Initial Calibration
 Integrator: ChemStation

Volume Inj. : 1 µl
 Signal #1 Phase : ZB-MR1 Signal #2 Phase: ZB-MR2
 Signal #1 Info : 30M x 0.32mm x0.5 Signal #2 Info : 30M x 0.32mm x 0.25µm



QEdit

(27) Decachlorobiphenyl (SA)
 9.112min 12.458 ng/ml
 response 22107887

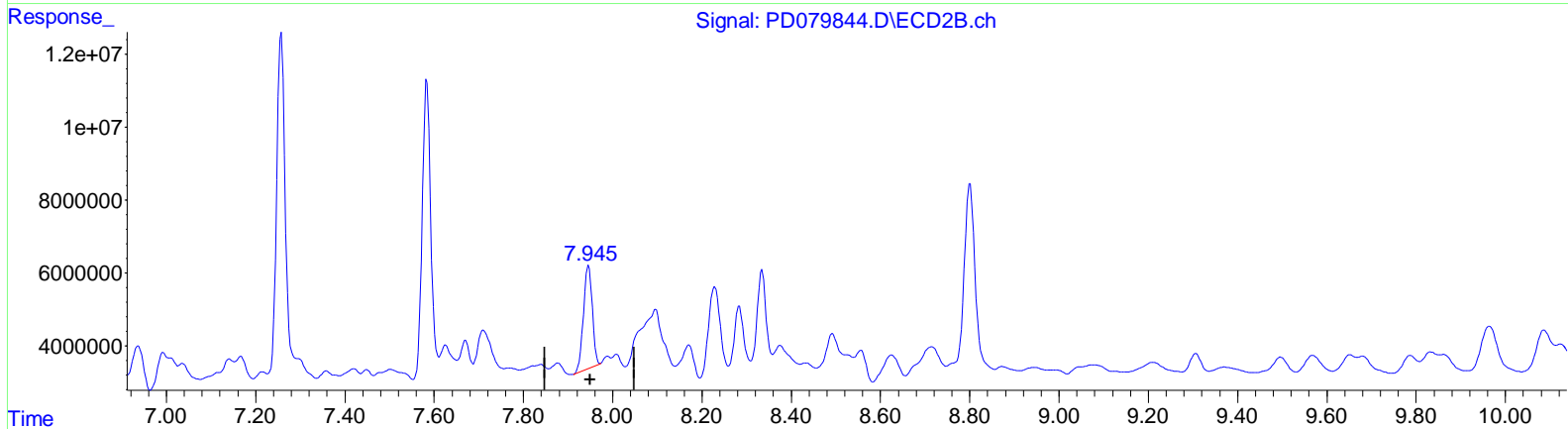
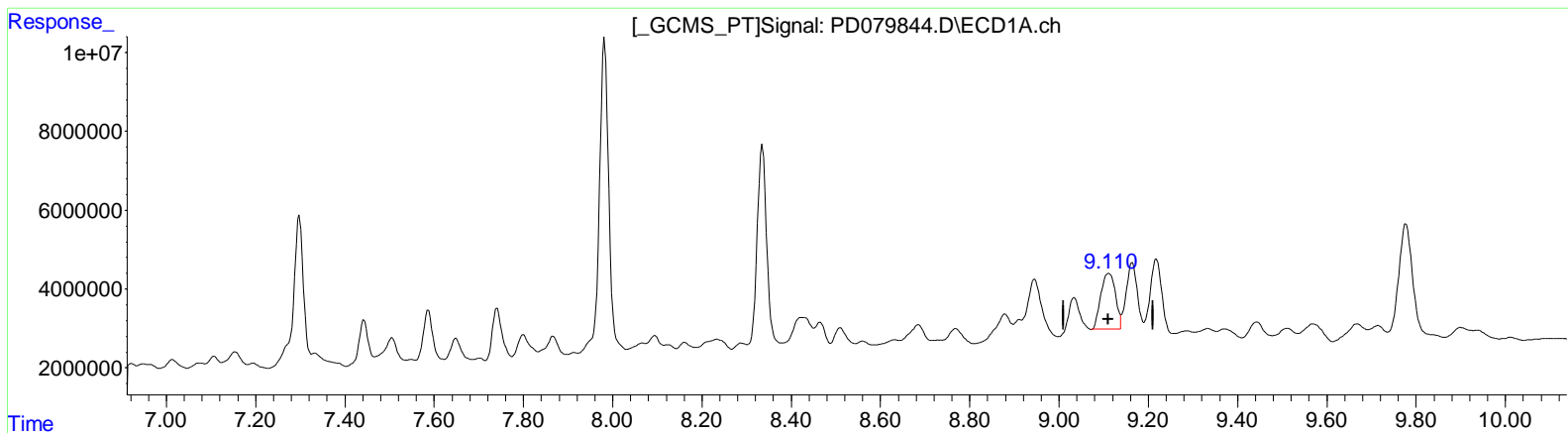
(27) Decachlorobiphenyl #2 (SA)
 7.946min 16.336 ng/ml
 response 39001484

(+) = Expected Retention Time

Data Path : Z:\pestpcbsrv\HPCHEM1\ECD_D\Data\PD112723\
 Data File : PD079844.D
 Signal(s) : Signal #1: ECD1A.ch Signal #2: ECD2B.ch
 Acq On : 27 Nov 2023 14:14
 Operator : ARVAJ
 Sample : 05455-04
 Misc :
 ALS Vial : 11 Sample Multiplier: 1

Integration File signal 1: autoint1.e
 Integration File signal 2: autoint2.e
 Quant Time: Nov 27 20:16:58 2023
 Quant Method : Z:\pestpcbsrv\HPCHEM1\ECD_D\Method\PD110623CLP.M
 Quant Title : GC Extractables
 QLast Update : Sat Nov 04 07:14:58 2023
 Response via : Initial Calibration
 Integrator: ChemStation

Volume Inj. : 1 µl
 Signal #1 Phase : ZB-MR1 Signal #2 Phase: ZB-MR2
 Signal #1 Info : 30M x 0.32mm x0.5 Signal #2 Info : 30M x 0.32mm x 0.25µm



QEdit

(27) Decachlorobiphenyl (SA)

9.110min 18.528 ng/ml m

response 32878161

(27) Decachlorobiphenyl #2 (SA)

7.946min 16.336 ng/ml

response 39001484

Data Path : Z:\pestpcbsrv\HPCHEM1\ECD_D\Data\PD112723\
 Data File : PD079844.D
 Signal(s) : Signal #1: ECD1A.ch Signal #2: ECD2B.ch
 Acq On : 27 Nov 2023 14:14
 Operator : AR\AJ
 Sample : 05455-04
 Misc :
 ALS Vial : 11 Sample Multiplier: 1

Integration File signal 1: autoint1.e
 Integration File signal 2: autoint2.e
 Quant Time: Nov 27 20:16:58 2023
 Quant Method : Z:\pestpcbsrv\HPCHEM1\ECD_D\Method\PD110623CLP.M
 Quant Title : GC Extractables
 QLast Update : Sat Nov 04 07:14:58 2023
 Response via : Initial Calibration
 Integrator: ChemStation

Volume Inj. : 1 µl
 Signal #1 Phase : ZB-MR1 Signal #2 Phase: ZB-MR2
 Signal #1 Info : 30M x 0.32mm x 0.5 Signal #2 Info : 30M x 0.32mm x 0.25µm

Compound	RT#1	RT#2	Resp#1	Resp#2	ng/ml	ng/ml

System Monitoring Compounds						
1) SA Tetrachlo...	3.568	2.802	22623966	37386537	15.492	16.345
27) SA Decachlor...	9.110	7.946	32878161	39001484	18.528m	16.336
Target Compounds						
13) MA Diel drin	6.400	5.399	6820618	19719084	3.100m	6.193m#

(f)=RT Delta > 1/2 Window (#)=Amounts differ by > 25% (m)=manual int.

Data Path : Z:\pestpcbsrv\HPCHEM1\ECD_D\Data\PD112723\
 Data File : PD079844.D
 Signal(s) : Signal #1: ECD1A.ch Signal #2: ECD2B.ch
 Acq On : 27 Nov 2023 14:14
 Operator : ARVAJ
 Sample : 05455-04
 Misc :
 ALS Vial : 11 Sample Multiplier: 1

Integration File signal 1: autoint1.e
 Integration File signal 2: autoint2.e
 Quant Time: Nov 27 20:16:58 2023
 Quant Method : Z:\pestpcbsrv\HPCHEM1\ECD_D\Method\PD110623CLP.M
 Quant Title : GC Extractables
 QLast Update : Sat Nov 04 07:14:58 2023
 Response via : Initial Calibration
 Integrator: ChemStation

Volume Inj. : 1 µl
 Signal #1 Phase : ZB-MR1 Signal #2 Phase: ZB-MR2
 Signal #1 Info : 30M x 0.32mm x0.5 Signal #2 Info : 30M x 0.32mm x 0.25µm

