

Data Path : Z:\pestpcbsrv\HPCHEM1\ECD\_D\Data\PD112922\  
 Data File : PD073267.D  
 Signal(s) : Signal #1: ECD1A.ch Signal #2: ECD2B.ch  
 Acq On : 29 Nov 2022 15:58  
 Operator : AR\AJ  
 Sample : INDB384  
 Misc :  
 ALS Vial : 15 Sample Multiplier: 1

**Instrument :**  
 ECD\_D  
**ClientSampleId :**  
 INDB3237

**Manual Integrations**  
**APPROVED**

Reviewed By :Abdul Mirza 11/30/2022  
 Supervised By :Ankita Jodhani 11/30/2022

Integration File signal 1: autoint1.e  
 Integration File signal 2: autoint2.e  
 Quant Time: Nov 29 20:45:47 2022  
 Quant Method : Z:\pestpcbsrv\HPCHEM1\ECD\_D\Method\PD111722CLP.M  
 Quant Title : GC Extractables  
 QLast Update : Thu Nov 17 06:19:59 2022  
 Response via : Initial Calibration  
 Integrator: ChemStation

Volume Inj. : 1 µl  
 Signal #1 Phase : ZB-MR1 Signal #2 Phase: ZB-MR1  
 Signal #1 Info : 30M x 0.32mm x0.2 Signal #2 Info : 30M x 0.32mm x 0.50µm

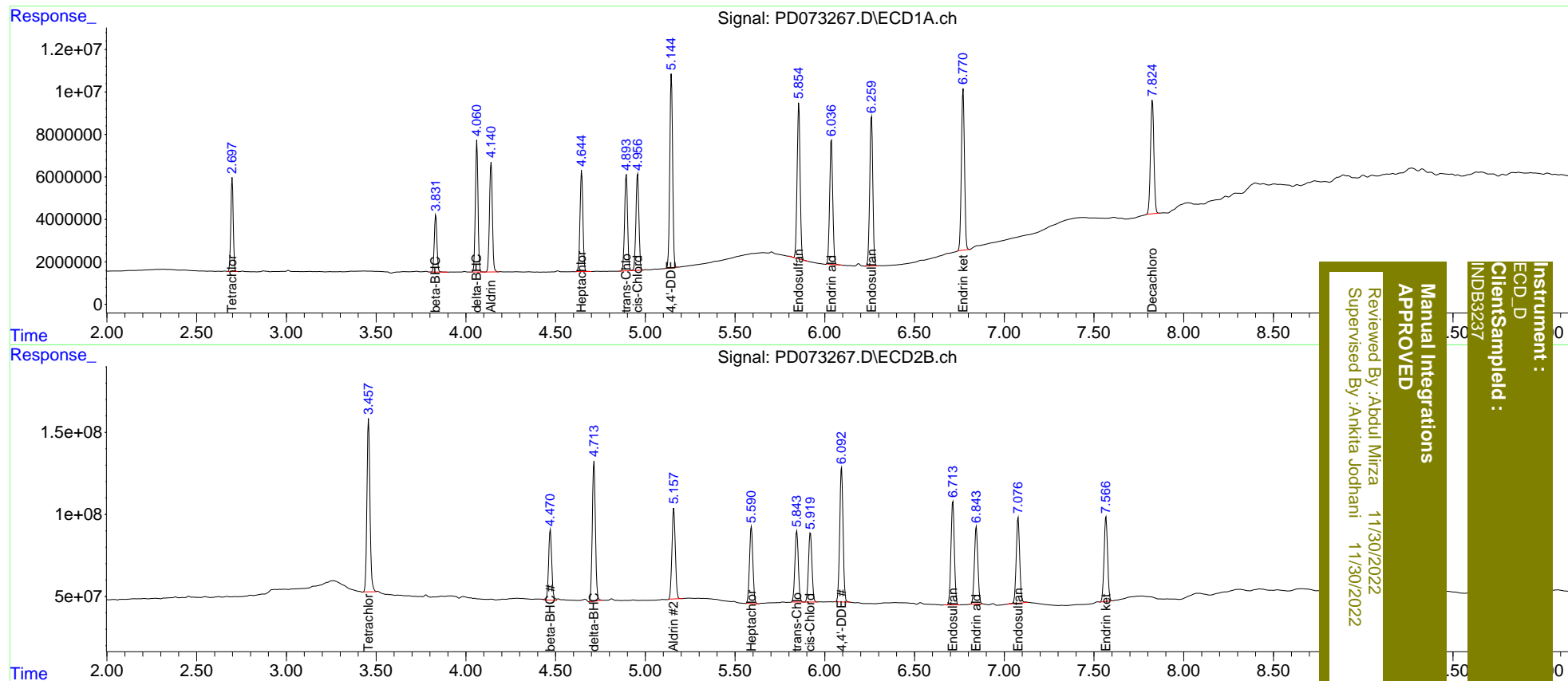
Compound	RT#1	RT#2	Resp#1	Resp#2	ng/ml	ng/ml
-----						
System Monitoring Compounds						
1) SA Tetrachlo...	2.698	3.458	41117093	1246.1E6	17.147	19.075
27) SA Decachlor...	7.826	8.906	70377662	447.4E6	30.842	30.231
Target Compounds						
5) MB Aldrin	4.141	5.159	57831346	724.0E6	17.162	18.027
6) B beta-BHC	3.833	4.471	27719324	535.2E6	17.265	20.032
7) B delta-BHC	4.062	4.714	62167402	1034.6E6	17.105	19.015
8) B Heptachlo...	4.645	5.591	53500388	612.3E6	17.218	18.114
10) B trans-Chl...	4.894	5.844	51942594	569.9E6	16.853	18.041
11) B cis-Chlor...	4.957	5.920	52708447	564.5E6	16.833	17.782
12) B 4,4'-DDE	5.145	6.092	100.7E6	1068.6E6	33.662	35.593m
15) B Endosulfa...	5.856	6.714	85053634	825.5E6	31.583	34.169
18) B Endrin al...	6.037	6.843	70183925	634.1E6	32.495	33.470m
19) B Endosulfa...	6.260	7.078	84288203	707.0E6	33.593	34.000
21) B Endrin ke...	6.771	7.566	91073212	701.5E6	31.199	31.420m
-----						

(f)=RT Delta > 1/2 Window (#)=Amounts differ by > 25% (m)=manual int.

Data Path : Z:\pestpcbsrv\HPCHEM1\ECD\_D\Data\PD112922\  
 Data File : PD073267.D  
 Signal(s) : Signal #1: ECD1A.ch Signal #2: ECD2B.ch  
 Acq On : 29 Nov 2022 15:58  
 Operator : AR\AJ  
 Sample : INDB384  
 Misc :  
 ALS Vial : 15 Sample Multiplier: 1

Integration File signal 1: autoint1.e  
 Integration File signal 2: autoint2.e  
 Quant Time: Nov 29 20:45:47 2022  
 Quant Method : Z:\pestpcbsrv\HPCHEM1\ECD\_D\Method\PD111722CLP.M  
 Quant Title : GC Extractables  
 QLast Update : Thu Nov 17 06:19:59 2022  
 Response via : Initial Calibration  
 Integrator: ChemStation

Volume Inj. : 1 µl  
 Signal #1 Phase : ZB-MR2 Signal #2 Phase: ZB-MR1  
 Signal #1 Info : 30M x 0.32mm x0.2 Signal #2 Info : 30M x 0.32mm x 0.50µm



Instrument : ECD\_D  
 Client/Sample : INDB3237  
 Manual Integrations APPROVED  
 Reviewed By : Aboul Mirza 11/30/2022  
 Supervised By : Ankita Jodhani 11/30/2022