

Data Path : Z:\pestpcbsrv\HPCHEM1\ECD_D\Data\PD113020\
 Data File : PD060444.D
 Signal(s) : Signal #1: ECD1A.ch Signal #2: ECD2B.ch
 Acq On : 30 Nov 2020 21:43
 Operator : DD\AJ
 Sample : L4864-17
 Misc :
 ALS Vial : 52 Sample Multiplier: 1

Instrument :
 ECD_D
 ClientSampled :

Integration File signal 1: autoint1.e
 Integration File signal 2: autoint2.e
 Quant Time: Dec 01 00:33:24 2020
 Quant Method : Z:\pestpcbsrv\HPCHEM1\ECD_D\Method\PD112720CLP.M
 Quant Title : GC Extractables
 QLast Update : Sat Nov 28 01:50:00 2020
 Response via : Initial Calibration
 Integrator: ChemStation

Volume Inj. : 1 µl
 Signal #1 Phase : ZB-MR1 Signal #2 Phase: ZB-MR1
 Signal #1 Info : 30M x 0.32mm x0.2 Signal #2 Info : 30M x 0.32mm x 0.50µm

Compound	RT#1	RT#2	Resp#1	Resp#2	ng/ml	ng/ml

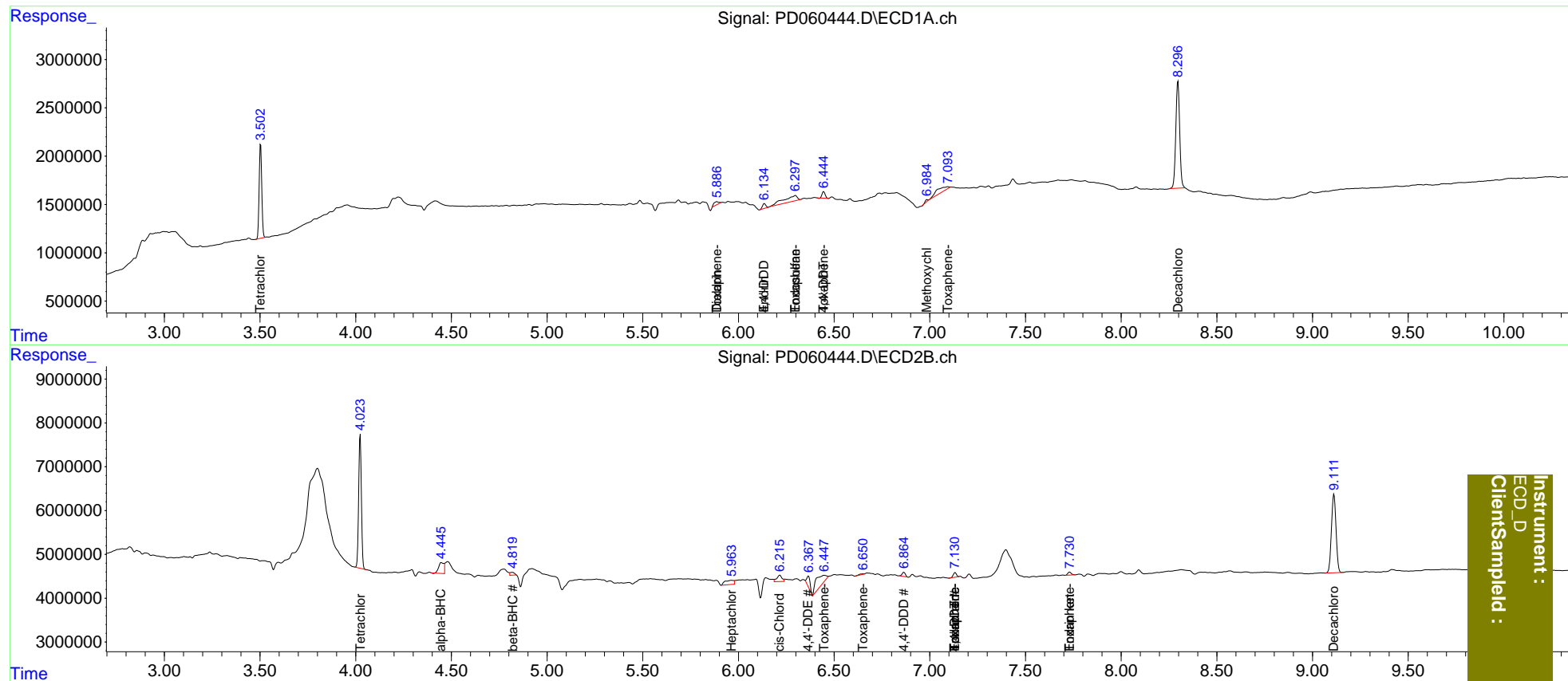
System Monitoring Compounds						
1) SA Tetrachlo...	3.503	4.024	9186144	30177431	8.067	8.208
27) SA Decachlor...	8.297	9.113	15640920	30013748	11.550	10.355
Target Compounds						
2) A alpha-BHC	0.000	4.447f	0	4632229	N.D.	0.850
6) B beta-BHC	0.000	4.820f	0	982956	N.D.	0.451
8) B Heptachlo...	0.000	5.965f	0	3096545	N.D.	0.829
9) A Endosulfan I	0.000	6.270	0	318108	N.D.	<MDL
11) B cis-Chlor...	0.000	6.216	0	2734433	N.D.	0.663
12) B 4,4'-DDE	0.000	6.366	0	3065820	N.D.	0.772
13) MA Dieldrin	5.888f	0.000	543656	0	0.357	N.D. #
14) MA Endrin	6.136f	0.000	614577	0	0.494	N.D. #
15) B Endosulfa...	6.298f	0.000	2965724	0	2.495	N.D. #
16) A 4,4'-DDD	6.136f	6.865	614577	1154323	0.505	0.348 #
17) MA 4,4'-DDT	6.446	7.132	777421	1169524	0.636	0.356 #
18) B Endrin al...	0.000	7.132f	0	1169524	N.D.	0.433
20) A Methoxychlor	6.986	0.000	128636	0	0.215	N.D. #
21) B Endrin ke...	0.000	7.731	0	850450	N.D.	0.253
22) Toxaphene-1	0.000	6.449	0	8186644	N.D.	307.110
23) Toxaphene-2	5.888	6.652	543656	238295	41.949	7.340 #
24) Toxaphene-3	6.298	7.132	2965724	1169524	200.864	24.292 #
25) Toxaphene-4	6.446	7.132	777421	1169524	23.216	8.910 #
26) Toxaphene-5	7.094	7.731	1900706	850450	53.868	14.570 #

(f)=RT Delta > 1/2 Window (#)=Amounts differ by > 25% (m)=manual int.

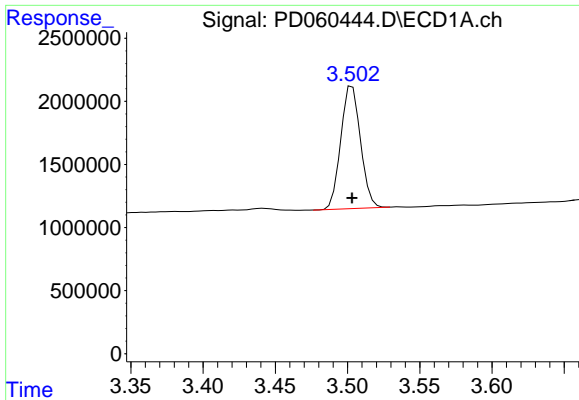
Data Path : Z:\pestpcbsrv\HPCHEM1\ECD_D\Data\PD113020\
 Data File : PD060444.D
 Signal(s) : Signal #1: ECD1A.ch Signal #2: ECD2B.ch
 Acq On : 30 Nov 2020 21:43
 Operator : DD\AJ
 Sample : L4864-17
 Misc :
 ALS Vial : 52 Sample Multiplier: 1

Integration File signal 1: autoint1.e
 Integration File signal 2: autoint2.e
 Quant Time: Dec 01 00:33:24 2020
 Quant Method : Z:\pestpcbsrv\HPCHEM1\ECD_D\Method\PD112720CLP.M
 Quant Title : GC Extractables
 QLast Update : Sat Nov 28 01:50:00 2020
 Response via : Initial Calibration
 Integrator: ChemStation

Volume Inj. : 1 µl
 Signal #1 Phase : ZB-MR2 Signal #2 Phase: ZB-MR1
 Signal #1 Info : 30M x 0.32mm x0.2 Signal #2 Info : 30M x 0.32mm x 0.50µm

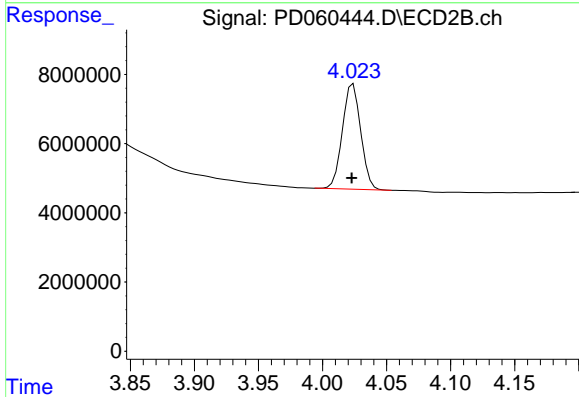


Instrument :
 ECD_D
 ClientSampleId :

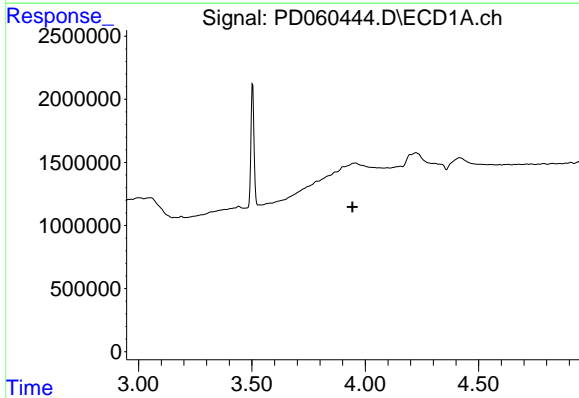


#1 Tetrachloro-m-xylene
 R.T.: 3.503 min
 Delta R.T.: 0.000 min
 Response: 9186144
 Conc: 8.07 ng/ml

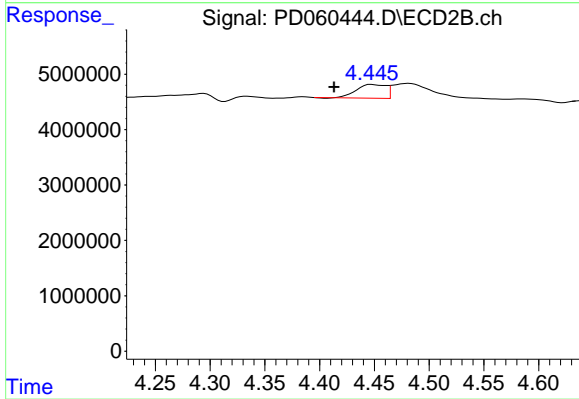
Instrument :
 ECD_D
 ClientSampled :



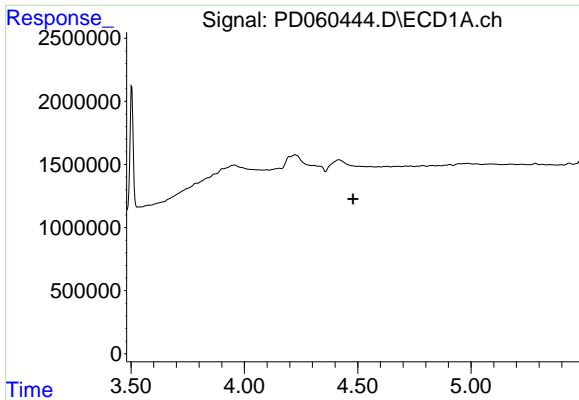
#1 Tetrachloro-m-xylene
 R.T.: 4.024 min
 Delta R.T.: 0.001 min
 Response: 30177431
 Conc: 8.21 ng/ml



#2 alpha-BHC
 R.T.: 0.000 min
 Exp R.T. : 3.944 min
 Response: 0
 Conc: N.D.

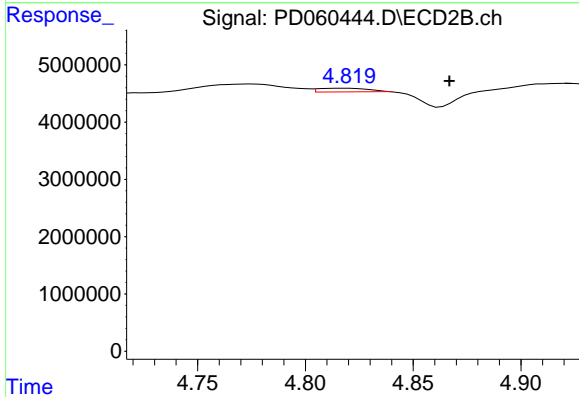


#2 alpha-BHC
 R.T.: 4.447 min
 Delta R.T.: 0.034 min
 Response: 4632229
 Conc: 0.85 ng/ml

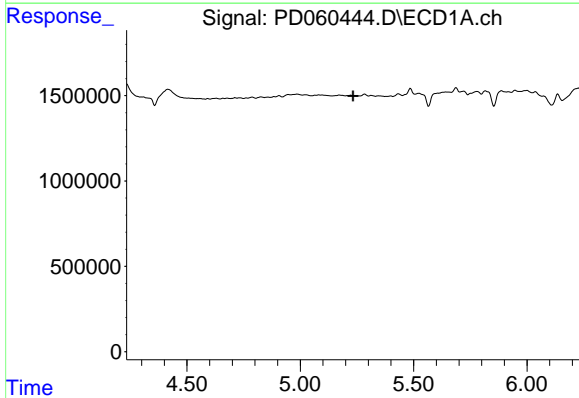


#6 beta-BHC
 R.T.: 0.000 min
 Exp R.T. : 4.480 min
 Response: 0
 Conc: N.D.

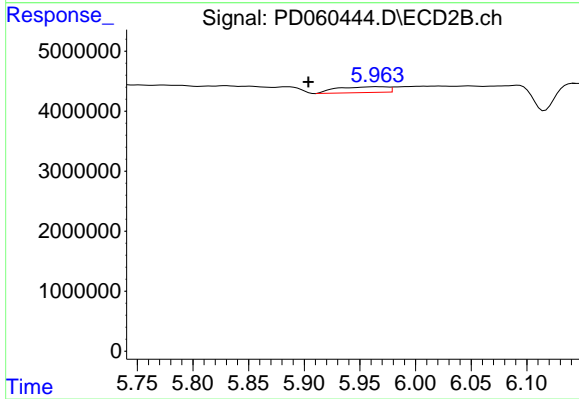
Instrument :
 ECD_D
 ClientSampleId :



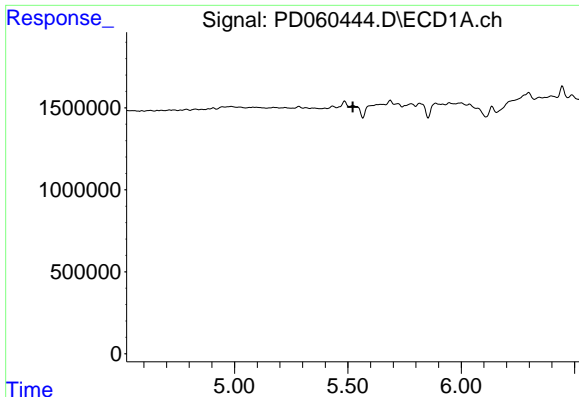
#6 beta-BHC
 R.T.: 4.820 min
 Delta R.T.: -0.047 min
 Response: 982956
 Conc: 0.45 ng/ml



#8 Heptachlor epoxide
 R.T.: 0.000 min
 Exp R.T. : 5.233 min
 Response: 0
 Conc: N.D.



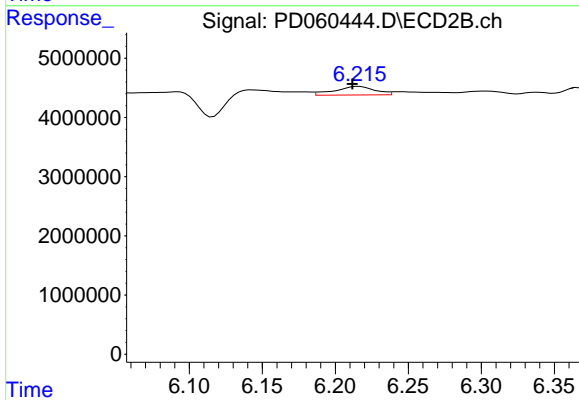
#8 Heptachlor epoxide
 R.T.: 5.965 min
 Delta R.T.: 0.061 min
 Response: 3096545
 Conc: 0.83 ng/ml



#11 cis-Chlordane

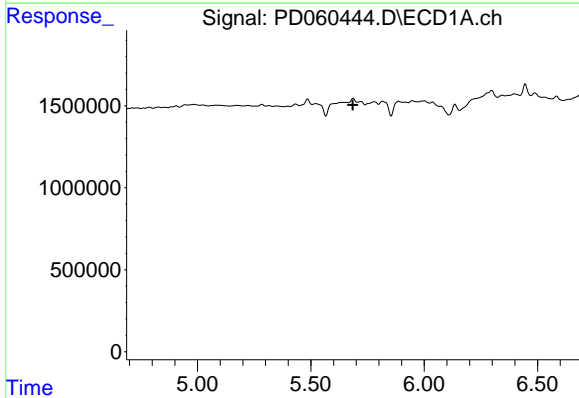
R.T.: 0.000 min
 Exp R.T. : 5.521 min
 Response: 0
 Conc: N.D.

Instrument :
 ECD_D
 ClientSampleId :



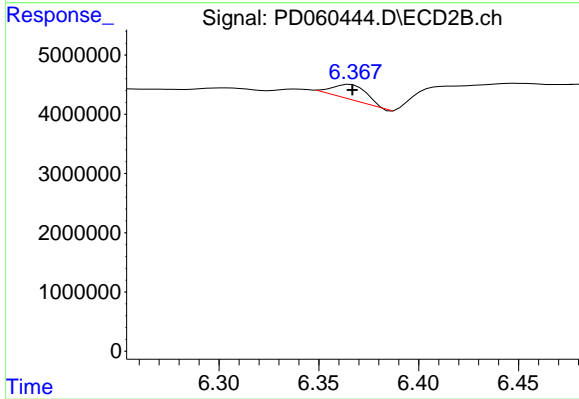
#11 cis-Chlordane

R.T.: 6.216 min
 Delta R.T.: 0.005 min
 Response: 2734433
 Conc: 0.66 ng/ml



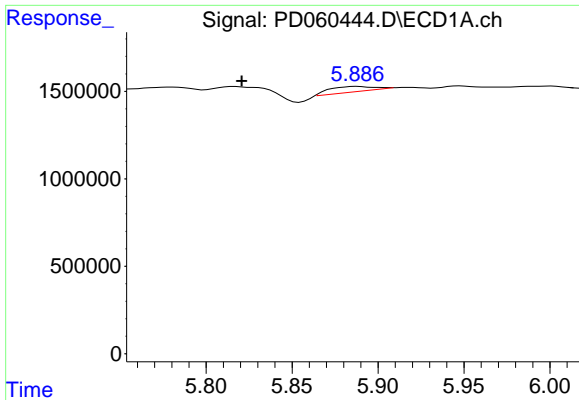
#12 4,4'-DDE

R.T.: 0.000 min
 Exp R.T. : 5.685 min
 Response: 0
 Conc: N.D.



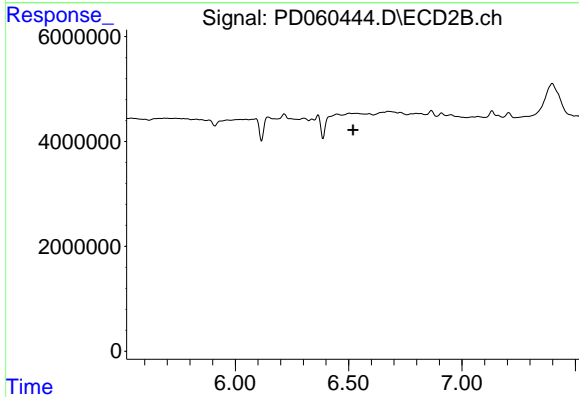
#12 4,4'-DDE

R.T.: 6.366 min
 Delta R.T.: 0.000 min
 Response: 3065820
 Conc: 0.77 ng/ml

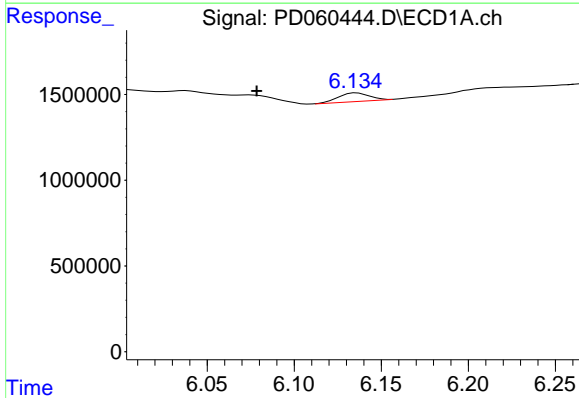


#13 Dieldrin
 R.T.: 5.888 min
 Delta R.T.: 0.067 min
 Response: 543656
 Conc: 0.36 ng/ml

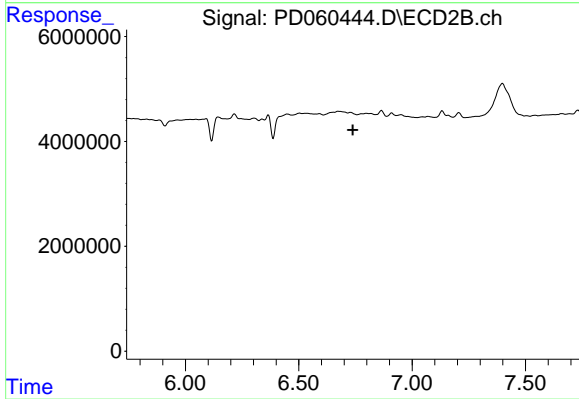
Instrument :
 ECD_D
 ClientSampled :



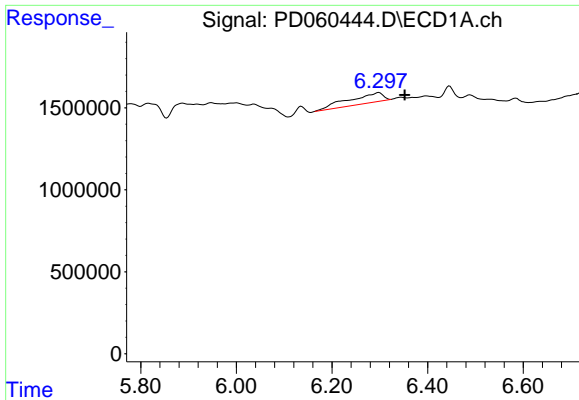
#13 Dieldrin
 R.T.: 0.000 min
 Exp R.T. : 6.519 min
 Response: 0
 Conc: N.D.



#14 Endrin
 R.T.: 6.136 min
 Delta R.T.: 0.057 min
 Response: 614577
 Conc: 0.49 ng/ml

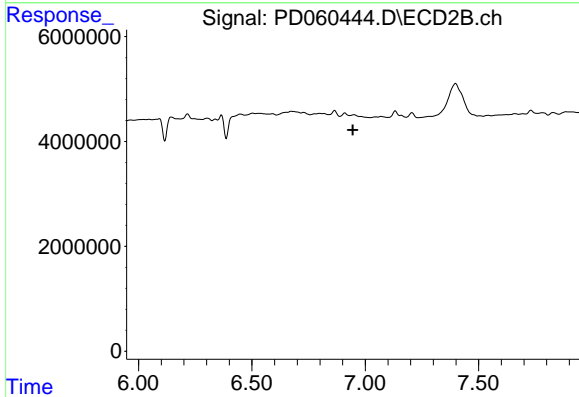


#14 Endrin
 R.T.: 0.000 min
 Exp R.T. : 6.738 min
 Response: 0
 Conc: N.D.

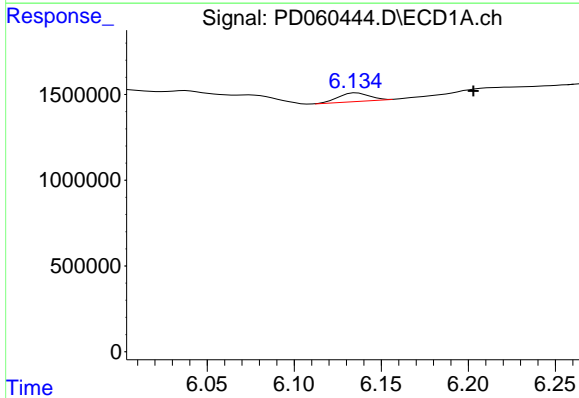


#15 Endosulfan II
 R.T.: 6.298 min
 Delta R.T.: -0.055 min
 Response: 2965724
 Conc: 2.50 ng/ml

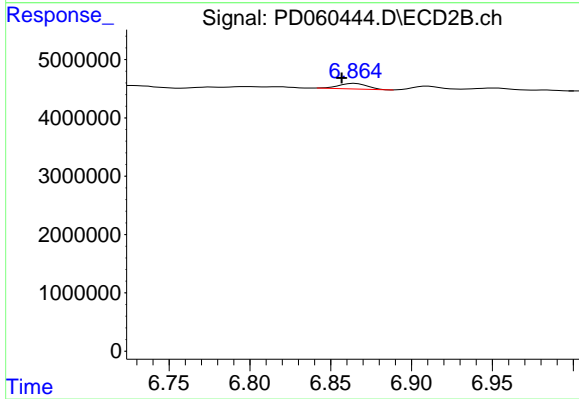
Instrument :
 ECD_D
 ClientSampled :



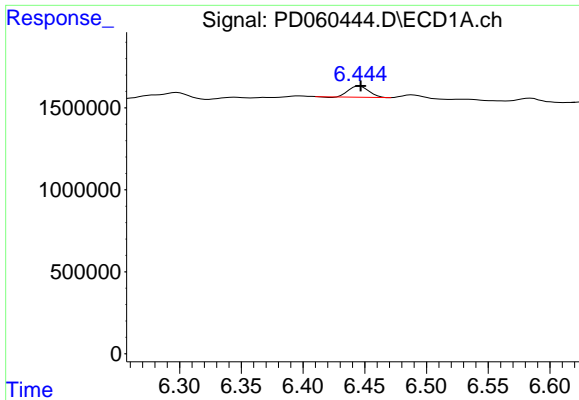
#15 Endosulfan II
 R.T.: 0.000 min
 Exp R.T. : 6.945 min
 Response: 0
 Conc: N.D.



#16 4,4'-DDD
 R.T.: 6.136 min
 Delta R.T.: -0.067 min
 Response: 614577
 Conc: 0.51 ng/ml



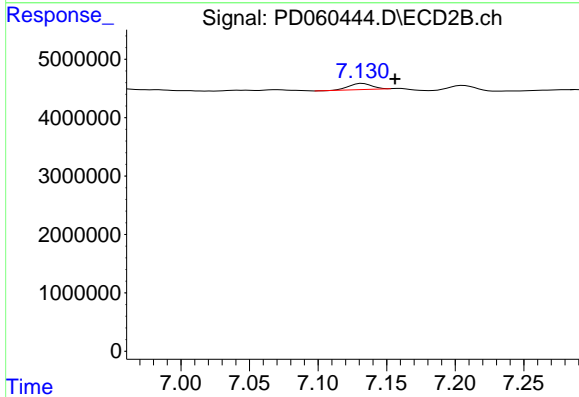
#16 4,4'-DDD
 R.T.: 6.865 min
 Delta R.T.: 0.008 min
 Response: 1154323
 Conc: 0.35 ng/ml



#17 4,4'-DDT

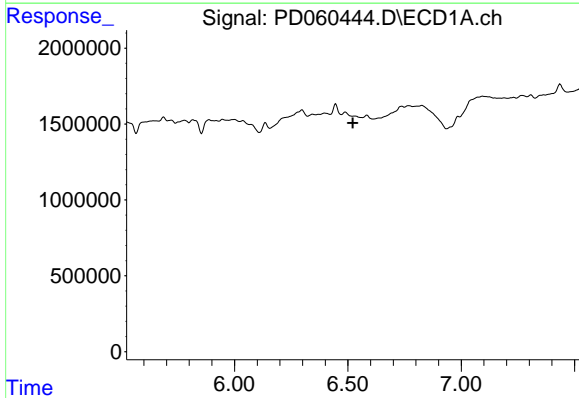
R.T.: 6.446 min
 Delta R.T.: 0.000 min
 Response: 777421
 Conc: 0.64 ng/ml

Instrument :
 ECD_D
 ClientSampled :



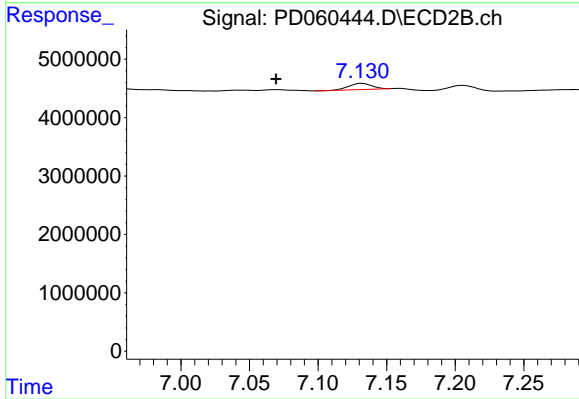
#17 4,4'-DDT

R.T.: 7.132 min
 Delta R.T.: -0.024 min
 Response: 1169524
 Conc: 0.36 ng/ml



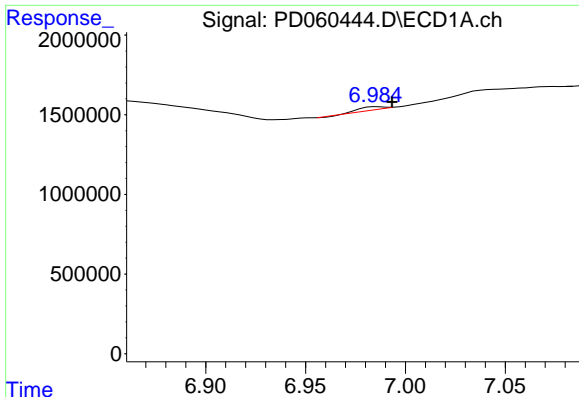
#18 Endrin aldehyde

R.T.: 0.000 min
 Exp R.T. : 6.521 min
 Response: 0
 Conc: N.D.



#18 Endrin aldehyde

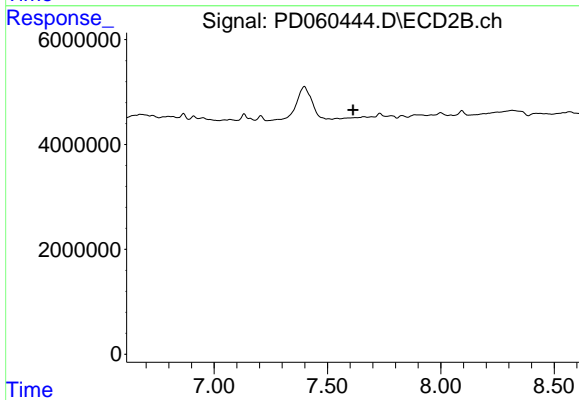
R.T.: 7.132 min
 Delta R.T.: 0.063 min
 Response: 1169524
 Conc: 0.43 ng/ml



#20 Methoxychlor

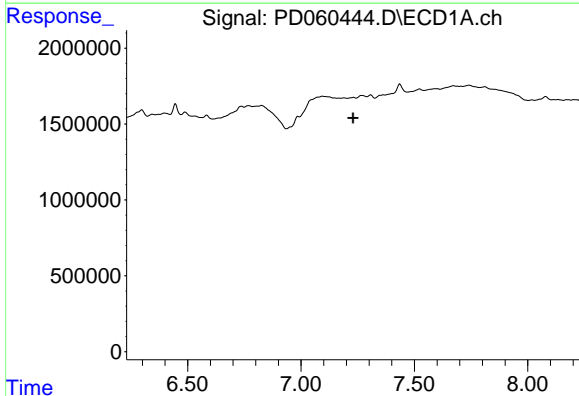
R.T.: 6.986 min
 Delta R.T.: -0.007 min
 Response: 128636
 Conc: 0.22 ng/ml

Instrument :
 ECD_D
 ClientSampled :



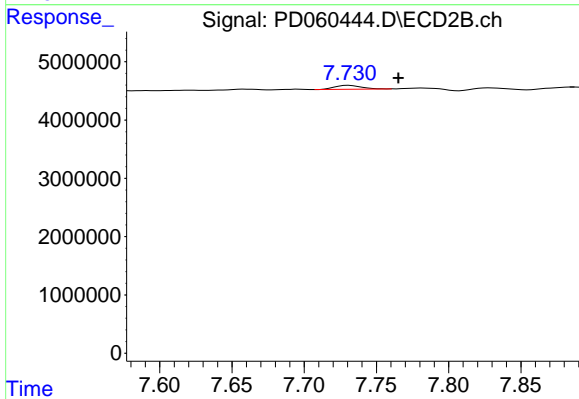
#20 Methoxychlor

R.T.: 0.000 min
 Exp R.T. : 7.613 min
 Response: 0
 Conc: N.D.



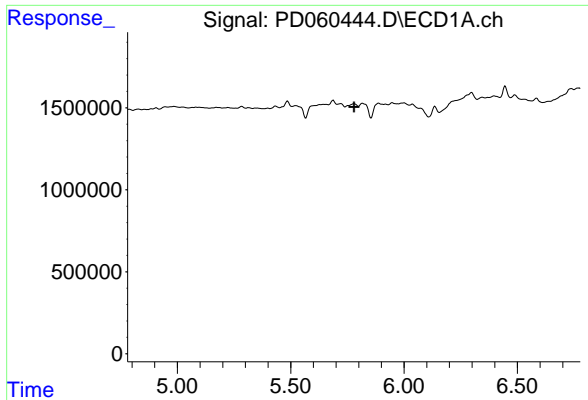
#21 Endrin ketone

R.T.: 0.000 min
 Exp R.T. : 7.230 min
 Response: 0
 Conc: N.D.



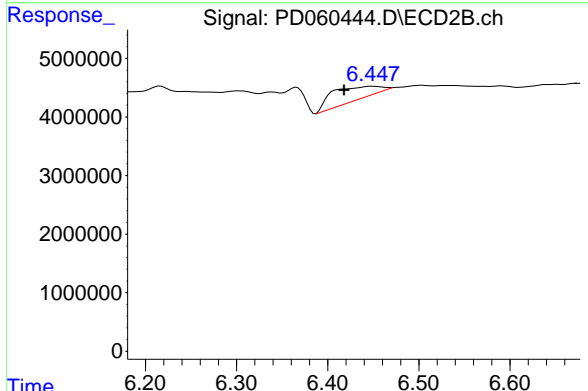
#21 Endrin ketone

R.T.: 7.731 min
 Delta R.T.: -0.034 min
 Response: 850450
 Conc: 0.25 ng/ml

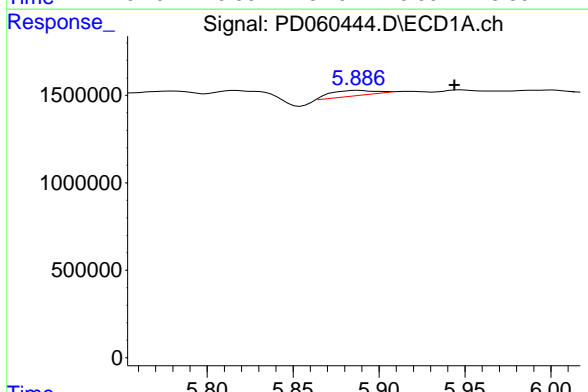


#22 Toxaphene-1
 R.T.: 0.000 min
 Exp R.T.: 5.780 min
 Response: 0
 Conc: N.D.

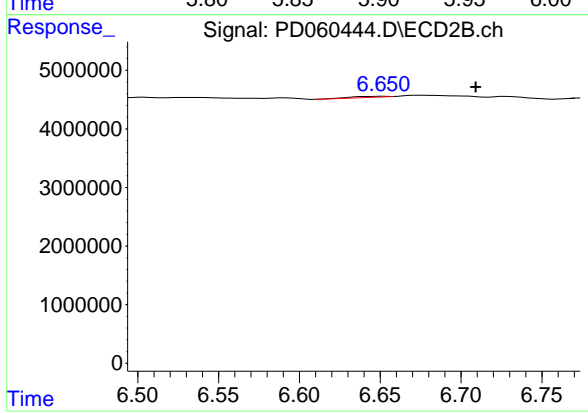
Instrument :
 ECD_D
 ClientSampleId :



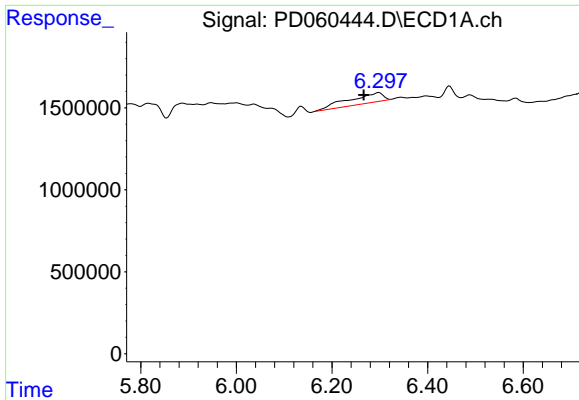
#22 Toxaphene-1
 R.T.: 6.449 min
 Delta R.T.: 0.031 min
 Response: 8186644
 Conc: 307.11 ng/ml



#23 Toxaphene-2
 R.T.: 5.888 min
 Delta R.T.: -0.056 min
 Response: 543656
 Conc: 41.95 ng/ml



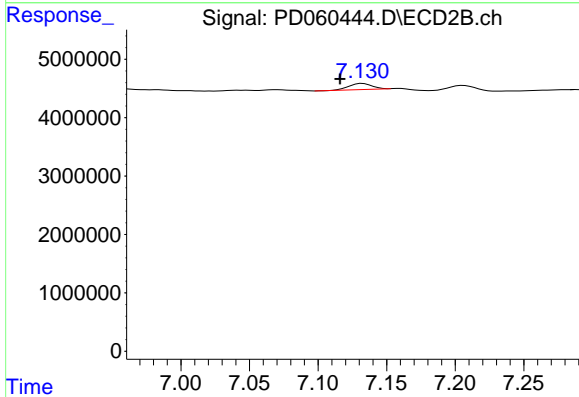
#23 Toxaphene-2
 R.T.: 6.652 min
 Delta R.T.: -0.057 min
 Response: 238295
 Conc: 7.34 ng/ml



#24 Toxaphene-3

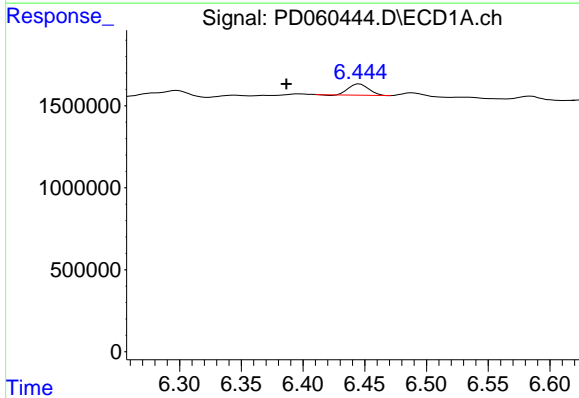
R.T.: 6.298 min
 Delta R.T.: 0.031 min
 Response: 2965724
 Conc: 200.86 ng/ml

Instrument :
 ECD_D
 ClientSampleId :



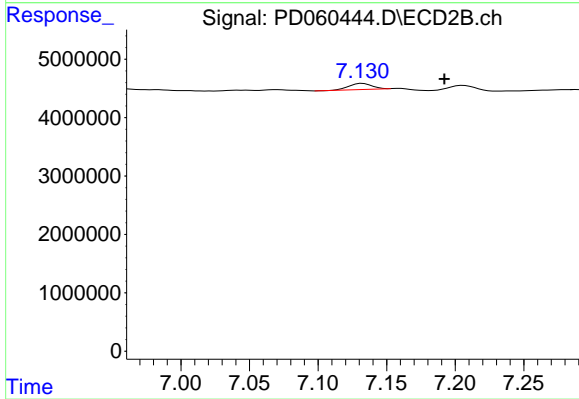
#24 Toxaphene-3

R.T.: 7.132 min
 Delta R.T.: 0.016 min
 Response: 1169524
 Conc: 24.29 ng/ml



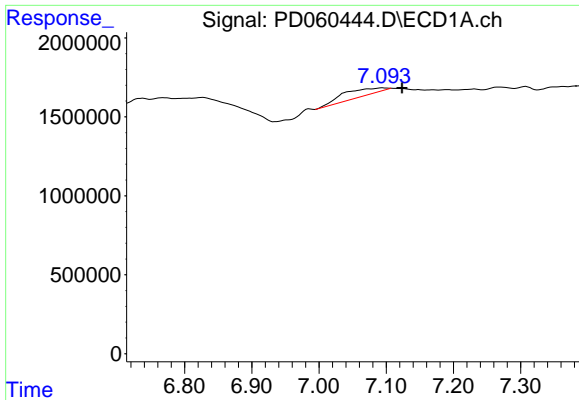
#25 Toxaphene-4

R.T.: 6.446 min
 Delta R.T.: 0.059 min
 Response: 777421
 Conc: 23.22 ng/ml



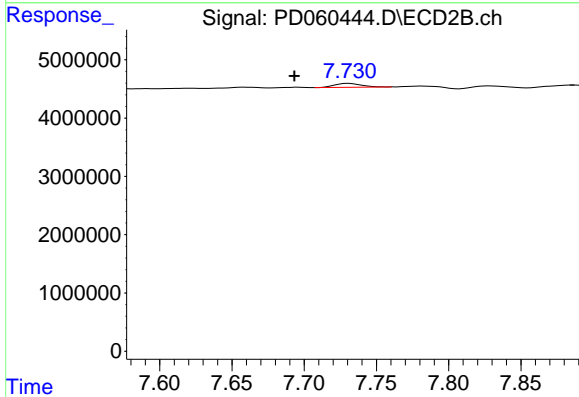
#25 Toxaphene-4

R.T.: 7.132 min
 Delta R.T.: -0.060 min
 Response: 1169524
 Conc: 8.91 ng/ml

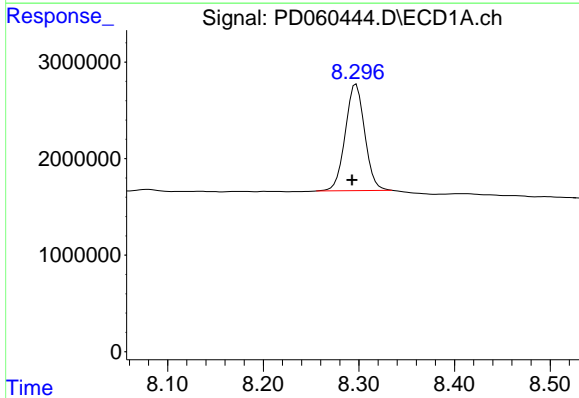


#26 Toxaphene-5
 R.T.: 7.094 min
 Delta R.T.: -0.029 min
 Response: 1900706
 Conc: 53.87 ng/ml

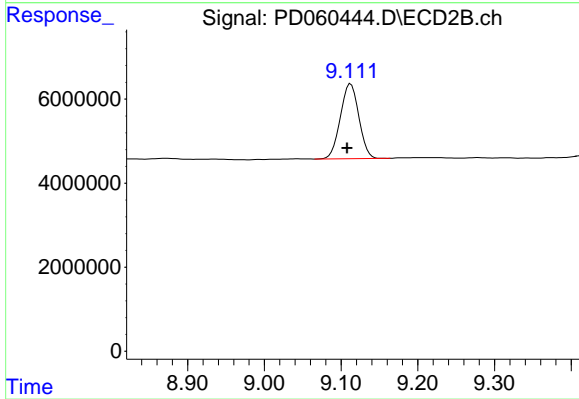
Instrument :
 ECD_D
 ClientSampleId :



#26 Toxaphene-5
 R.T.: 7.731 min
 Delta R.T.: 0.038 min
 Response: 850450
 Conc: 14.57 ng/ml



#27 Decachlorobiphenyl
 R.T.: 8.297 min
 Delta R.T.: 0.004 min
 Response: 15640920
 Conc: 11.55 ng/ml



#27 Decachlorobiphenyl
 R.T.: 9.113 min
 Delta R.T.: 0.005 min
 Response: 30013748
 Conc: 10.36 ng/ml