

Data Path : Z:\pestpcbsrv\HPCHEM1\ECD_D\Data\PD113020\
 Data File : PD060424.D
 Signal(s) : Signal #1: ECD1A.ch Signal #2: ECD2B.ch
 Acq On : 30 Nov 2020 17:03
 Operator : DD\AJ
 Sample : PB133281BL
 Misc :
 ALS Vial : 32 Sample Multiplier: 1

Instrument :
 ECD_D
 ClientSampled :
 PBLK81

Integration File signal 1: autoint1.e
 Integration File signal 2: autoint2.e
 Quant Time: Dec 01 00:28:38 2020
 Quant Method : Z:\pestpcbsrv\HPCHEM1\ECD_D\Method\PD112720CLP.M
 Quant Title : GC Extractables
 QLast Update : Sat Nov 28 01:50:00 2020
 Response via : Initial Calibration
 Integrator: ChemStation

Volume Inj. : 1 µl
 Signal #1 Phase : ZB-MR2 Signal #2 Phase: ZB-MR1
 Signal #1 Info : 30M x 0.32mm x0.2 Signal #2 Info : 30M x 0.32mm x 0.50µm

Compound	RT#1	RT#2	Resp#1	Resp#2	ng/ml	ng/ml

System Monitoring Compounds						
1) SA Tetrachlo...	3.506	4.023	18613122	61107831	16.345	16.621
27) SA Decachlor...	8.300	9.113	44245578	90012175	32.673	31.056

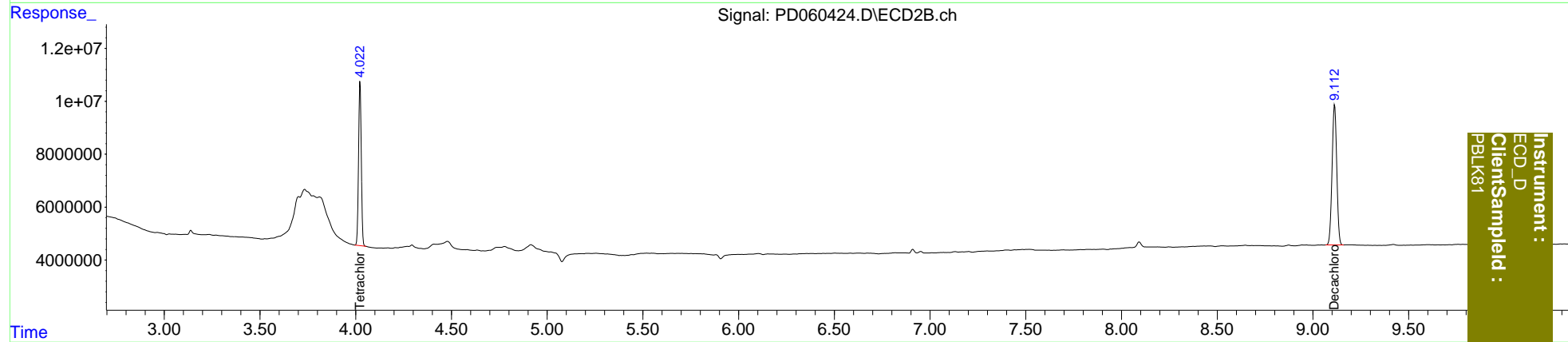
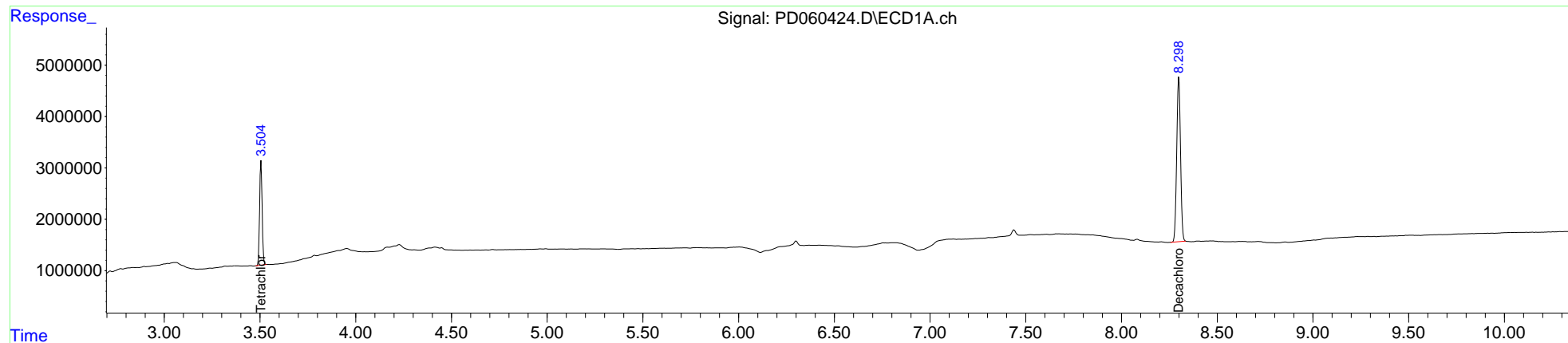
Target Compounds

(f)=RT Delta > 1/2 Window (#)=Amounts differ by > 25% (m)=manual int.

Data Path : Z:\pestpcbsrv\HPCHEM1\ECD_D\Data\PD113020\
 Data File : PD060424.D
 Signal(s) : Signal #1: ECD1A.ch Signal #2: ECD2B.ch
 Acq On : 30 Nov 2020 17:03
 Operator : DD\AJ
 Sample : PB133281BL
 Misc :
 ALS Vial : 32 Sample Multiplier: 1

Integration File signal 1: autoint1.e
 Integration File signal 2: autoint2.e
 Quant Time: Dec 01 00:28:38 2020
 Quant Method : Z:\pestpcbsrv\HPCHEM1\ECD_D\Method\PD112720CLP.M
 Quant Title : GC Extractables
 QLast Update : Sat Nov 28 01:50:00 2020
 Response via : Initial Calibration
 Integrator: ChemStation

Volume Inj. : 1 µl
 Signal #1 Phase : ZB-MR2 Signal #2 Phase: ZB-MR1
 Signal #1 Info : 30M x 0.32mm x 0.2 Signal #2 Info : 30M x 0.32mm x 0.50µm



Instrument :
 ECD_D
 ClientSampleId :
 PBLK81