

Data Path : Z:\pestpcbsrv\HPCHEM1\ECD\_D\Data\PD113020\  
 Data File : PD060452.D  
 Signal(s) : Signal #1: ECD1A.ch Signal #2: ECD2B.ch  
 Acq On : 30 Nov 2020 23:35  
 Operator : DD\AJ  
 Sample : PEM12  
 Misc :  
 ALS Vial : 3 Sample Multiplier: 1

**Instrument :**  
 ECD\_D  
**ClientSampled :**  
 PEM12

**Manual Integrations**  
**APPROVED**  
 Ankita  
 12/1/2020 12:12:47 PM

Integration File signal 1: autoint1.e  
 Integration File signal 2: autoint2.e  
 Quant Time: Dec 01 00:35:13 2020  
 Quant Method : Z:\pestpcbsrv\HPCHEM1\ECD\_D\Method\PD112720CLP.M  
 Quant Title : GC Extractables  
 QLast Update : Sat Nov 28 01:50:00 2020  
 Response via : Initial Calibration  
 Integrator: ChemStation

Volume Inj. : 1 µl  
 Signal #1 Phase : ZB-MR2 Signal #2 Phase: ZB-MR1  
 Signal #1 Info : 30M x 0.32mm x0.2 Signal #2 Info : 30M x 0.32mm x 0.50µm

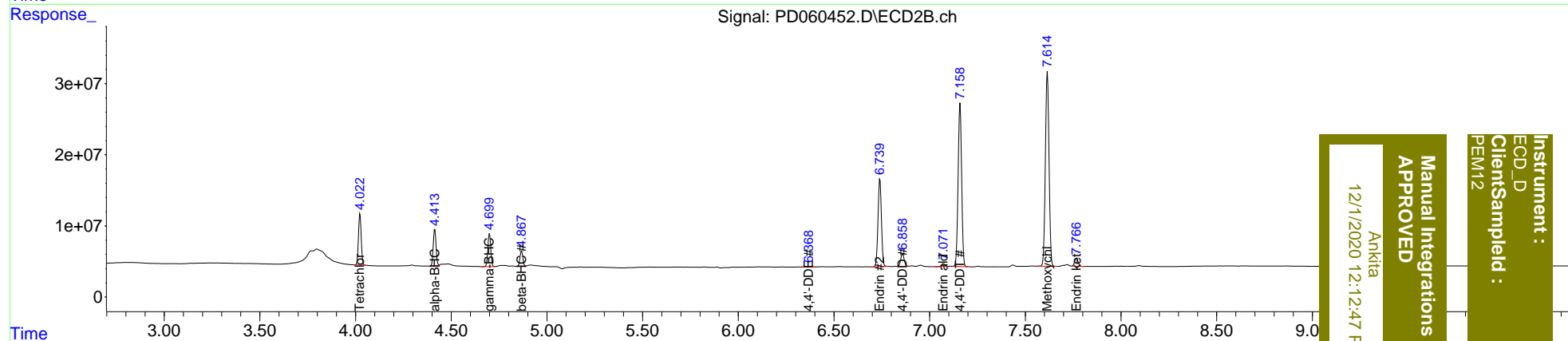
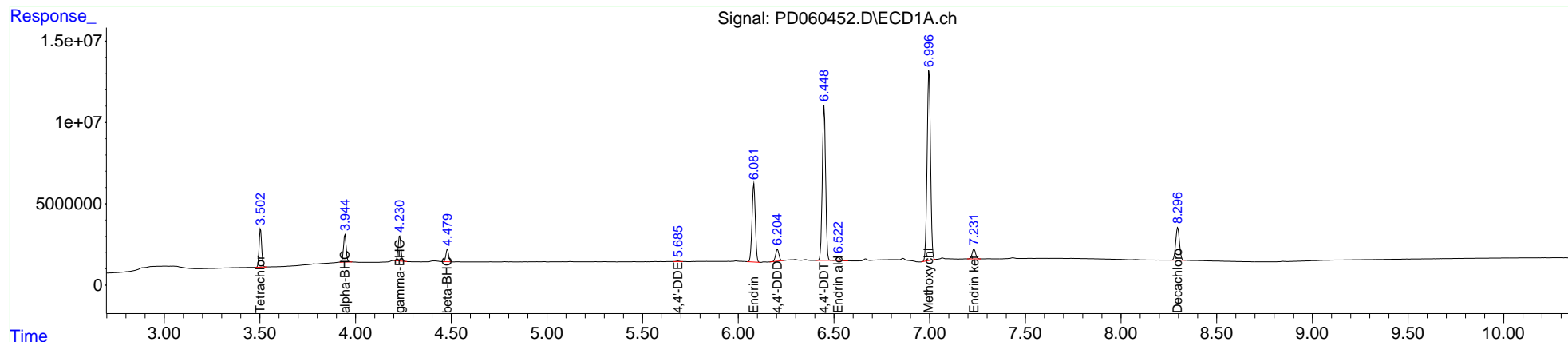
Compound	RT#1	RT#2	Resp#1	Resp#2	ng/ml	ng/ml
-----						
System Monitoring Compounds						
1) SA Tetrachlo...	3.504	4.024	22111945	72336984	19.418	19.676
27) SA Decachlor...	8.297	9.112	27572044	56234991	20.360	19.402
Target Compounds						
2) A alpha-BHC	3.945	4.414	16429709	54151655	10.017	9.932
3) MA gamma-BHC...	4.231	4.700	15624817	48629491	10.035	9.823
6) B beta-BHC	4.480	4.868	7564971	23207752	10.774	10.659
12) B 4,4'-DDE	5.685	6.369	417697	1169146	0.292m	0.294
14) MA Endrin	6.082	6.741	57163602	152.5E6	45.923	43.957
16) A 4,4'-DDD	6.205	6.859	8781430	22047342	7.219	6.655
17) MA 4,4'-DDT	6.449	7.159	114.1E6	292.8E6	93.401	89.179
18) B Endrin al...	6.523	7.072	2451348	5246304	2.452	1.943
20) A Methoxychlor	6.997	7.616	145.4E6	361.8E6	243.397	220.688
21) B Endrin ke...	7.232	7.768	7804825	14085545	5.776	4.184 #

(f)=RT Delta > 1/2 Window (#)=Amounts differ by > 25% (m)=manual int.

Data Path : Z:\pestpcbsrv\HPCHEM1\ECD\_D\Data\PD113020\  
 Data File : PD060452.D  
 Signal(s) : Signal #1: ECD1A.ch Signal #2: ECD2B.ch  
 Acq On : 30 Nov 2020 23:35  
 Operator : DD\AJ  
 Sample : PEM12  
 Misc :  
 ALS Vial : 3 Sample Multiplier: 1

Integration File signal 1: autoint1.e  
 Integration File signal 2: autoint2.e  
 Quant Time: Dec 01 00:35:13 2020  
 Quant Method : Z:\pestpcbsrv\HPCHEM1\ECD\_D\Method\PD112720CLP.M  
 Quant Title : GC Extractables  
 QLast Update : Sat Nov 28 01:50:00 2020  
 Response via : Initial Calibration  
 Integrator: ChemStation

Volume Inj. : 1 µl  
 Signal #1 Phase : ZB-MR2 Signal #2 Phase: ZB-MR1  
 Signal #1 Info : 30M x 0.32mm x0.2 Signal #2 Info : 30M x 0.32mm x 0.50µm



Instrument : ECD\_D  
 ClientSampleId : PEM12  
 Manual Integrations APPROVED  
 Ankitia  
 12/1/2020 12:12:47 PM