

Data Path : Z:\pestpcbsrv\HPCHEM1\ECD_D\Data\PD113021\
 Data File : PD067144.D
 Signal(s) : Signal #1: ECD1A.ch Signal #2: ECD2B.ch
 Acq On : 30 Nov 2021 08:39
 Operator : AR\AJ
 Sample : PSTDICV050
 Misc :
 ALS Vial : 39 Sample Multiplier: 1

Instrument :
 ECD_D
 ClientSampleId :

Integration File signal 1: autoint1.e
 Integration File signal 2: autoint2.e
 Quant Time: Nov 30 17:34:31 2021
 Quant Method : Z:\pestpcbsrv\HPCHEM1\ECD_D\Method\PD113021.M
 Quant Title : GC Extractables
 QLast Update : Tue Nov 30 17:33:19 2021
 Response via : Initial Calibration
 Integrator: ChemStation

Volume Inj. : 2 µl
 Signal #1 Phase : ZB-MR2 Signal #2 Phase: ZB-MR1
 Signal #1 Info : 30M x 0.32mm x0.2 Signal #2 Info : 30M x 0.32mm x 0.50µm

| | Compound | RT#1 | RT#2 | Resp#1 | Resp#2 | ng/ml | ng/ml |
|-----------------------------|-----------------|--------|--------|----------|---------|----------|------------|
| ----- | | | | | | | |
| System Monitoring Compounds | | | | | | | |
| 1) | SA Tetrachlo... | 3.436 | 3.966 | 97446533 | 327.5E6 | 47.159 | 45.120 |
| 28) | SA Decachlor... | 8.162 | 9.021 | 52338400 | 232.8E6 | 46.194 | 46.300 |
| Target Compounds | | | | | | | |
| 2) | A alpha-BHC | 3.873 | 4.360 | 162.1E6 | 481.1E6 | 48.245 | 46.230 |
| 3) | MA gamma-BHC... | 4.154 | 4.645 | 150.6E6 | 441.4E6 | 46.853 | 46.313 |
| 4) | MA Heptachlor | 4.447 | 5.145 | 156.2E6 | 414.5E6 | 47.996 | 46.056 |
| 5) | MB Aldrin | 4.693 | 5.448 | 152.5E6 | 391.2E6 | 47.877 | 46.539 |
| 6) | B beta-BHC | 4.403 | 4.822 | 62715832 | 200.9E6 | 45.946 | 45.569 |
| 7) | B delta-BHC | 4.605 | 5.037 | 144.6E6 | 412.3E6 | 48.362 | 44.926 |
| 8) | B Heptachlo... | 5.134 | 5.837 | 136.8E6 | 317.0E6 | 47.492 | 45.214 |
| 9) | A Endosulfan I | 5.469 | 6.194 | 123.7E6 | 322.2E6 | 47.420 | 46.314 |
| 10) | B gamma-Chl... | 5.358 | 6.071 | 137.8E6 | 340.7E6 | 47.391 | 46.286 |
| 11) | B alpha-Chl... | 5.415 | 6.142 | 134.0E6 | 336.4E6 | 47.172 | 46.179 |
| 12) | B 4,4'-DDE | 5.580 | 6.303 | 126.1E6 | 323.9E6 | 46.986 | 46.811 |
| 13) | MA Dieldrin | 5.711 | 6.452 | 134.1E6 | 337.9E6 | 47.974 | 46.077 |
| 14) | MA Endrin | 5.969 | 6.671 | 109.7E6 | 268.1E6 | 48.065 | 47.746 |
| 15) | B Endosulfa... | 6.241 | 6.885 | 104.3E6 | 276.4E6 | 46.550 | 46.050 |
| 16) | A 4,4'-DDD | 6.094 | 6.797 | 101.2E6 | 273.8E6 | 48.158 | 46.819 |
| 17) | MA 4,4'-DDT | 6.332 | 7.095 | 102.2E6 | 281.3E6 | 48.316 | 47.135 |
| 18) | B Endrin al... | 6.410 | 7.010 | 77926498 | 217.7E6 | 46.598 | 46.424 |
| 19) | B Endosulfa... | 6.622 | 7.233 | 94995625 | 279.2E6 | 46.839 | 46.511 |
| 20) | A Methoxychlor | 6.880 | 7.556 | 51195501 | 150.6E6 | 46.154 | 46.754 |
| 21) | B Endrin ke... | 7.114 | 7.705 | 107.4E6 | 334.3E6 | 47.403 | 46.219 |
| 22) | Mirex | 7.295 | 8.153 | 73503187 | 229.3E6 | 45.821 | 46.814 |
| 23) | Chlordane-1 | 4.326f | 0.000 | 1417976 | 0 | 17.505 | N.D. # |
| 24) | Chlordane-2 | 0.000 | 5.448f | 0 | 391.2E6 | N.D. | 1466.554 # |
| 25) | Chlordane-3 | 5.358 | 6.071 | 137.8E6 | 340.7E6 | 500.710 | 356.628 # |
| 26) | Chlordane-4 | 5.415 | 6.142 | 134.0E6 | 336.4E6 | 587.089 | 302.578 # |
| 27) | Chlordane-5 | 6.241 | 0.000 | 104.3E6 | 0 | 1147.681 | N.D. # |

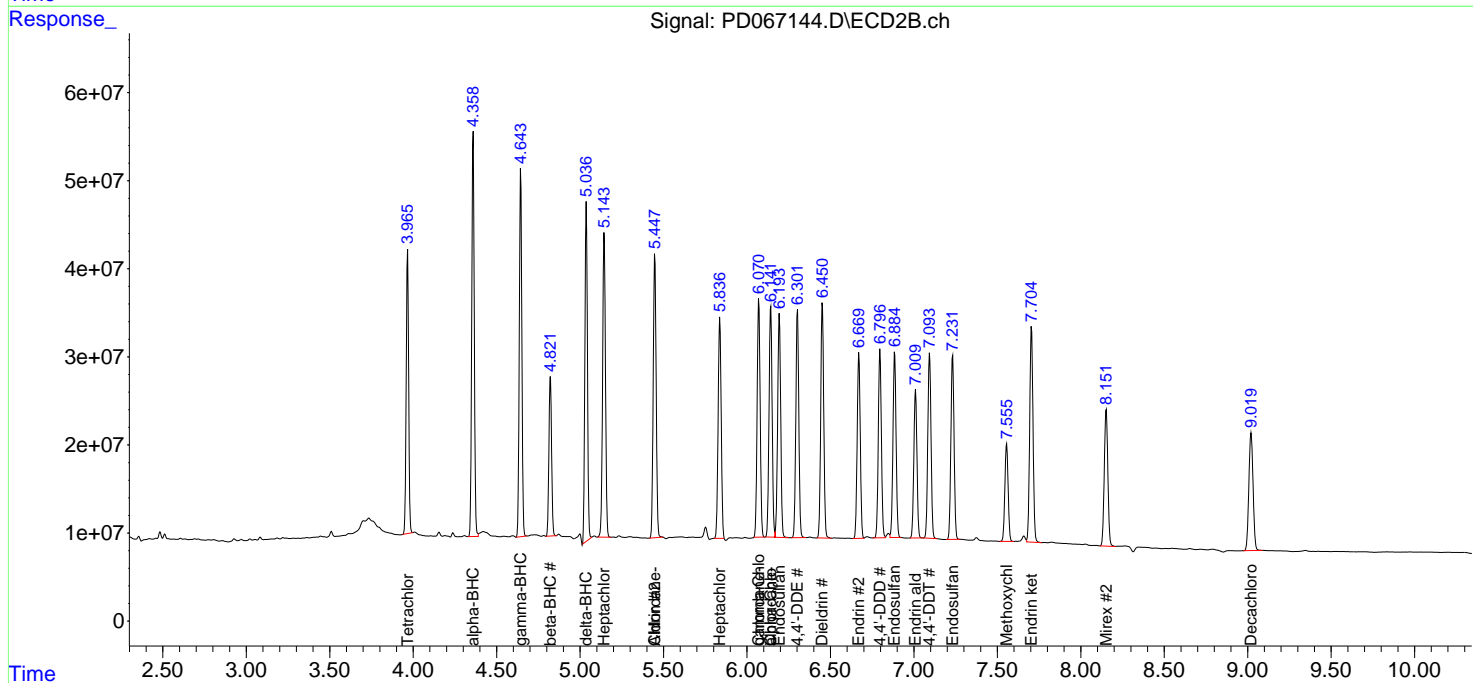
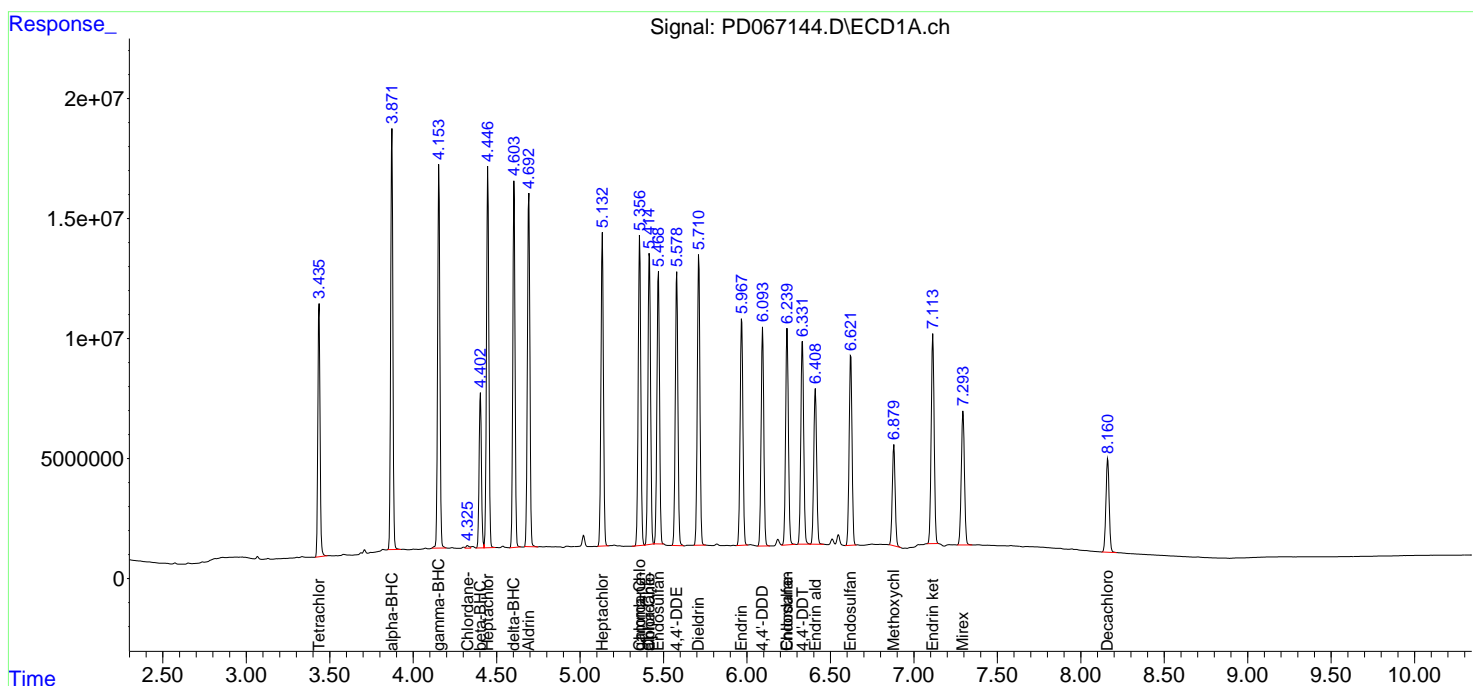
(f)=RT Delta > 1/2 Window (#)=Amounts differ by > 25% (m)=manual int.

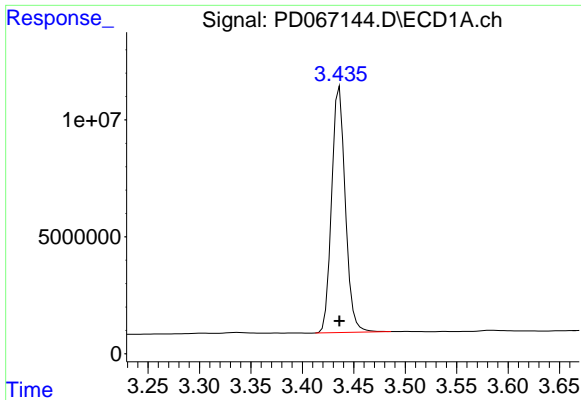
Data Path : Z:\pestpcbsrv\HPCHEM1\ECD_D\Data\PD113021\
 Data File : PD067144.D
 Signal(s) : Signal #1: ECD1A.ch Signal #2: ECD2B.ch
 Acq On : 30 Nov 2021 08:39
 Operator : AR\AJ
 Sample : PSTDICV050
 Misc :
 ALS Vial : 39 Sample Multiplier: 1

Instrument :
 ECD_D
 ClientSampleId :

Integration File signal 1: autoint1.e
 Integration File signal 2: autoint2.e
 Quant Time: Nov 30 17:34:31 2021
 Quant Method : Z:\pestpcbsrv\HPCHEM1\ECD_D\Method\PD113021.M
 Quant Title : GC Extractables
 QLast Update : Tue Nov 30 17:33:19 2021
 Response via : Initial Calibration
 Integrator: ChemStation

Volume Inj. : 2 µl
 Signal #1 Phase : ZB-MR2 Signal #2 Phase: ZB-MR1
 Signal #1 Info : 30M x 0.32mm x0.2 Signal #2 Info : 30M x 0.32mm x 0.50µm

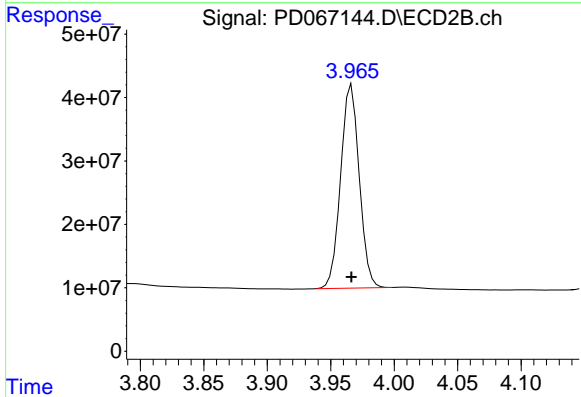




#1 Tetrachloro-m-xylene

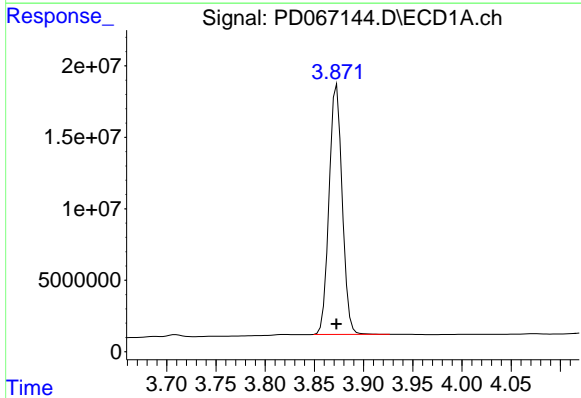
R.T.: 3.436 min
 Delta R.T.: 0.000 min
 Response: 97446533
 Conc: 47.16 ng/ml

Instrument :
 ECD_D
 ClientSampleId :



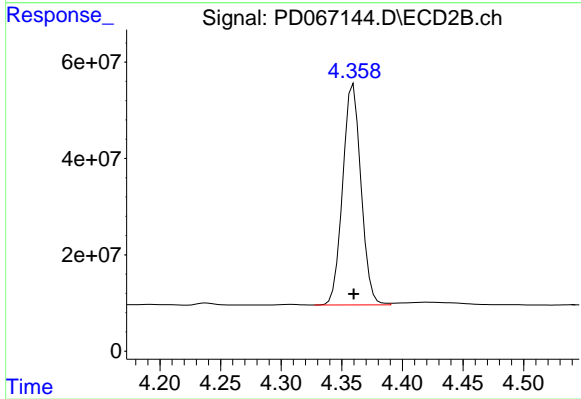
#1 Tetrachloro-m-xylene

R.T.: 3.966 min
 Delta R.T.: 0.000 min
 Response: 327494031
 Conc: 45.12 ng/ml



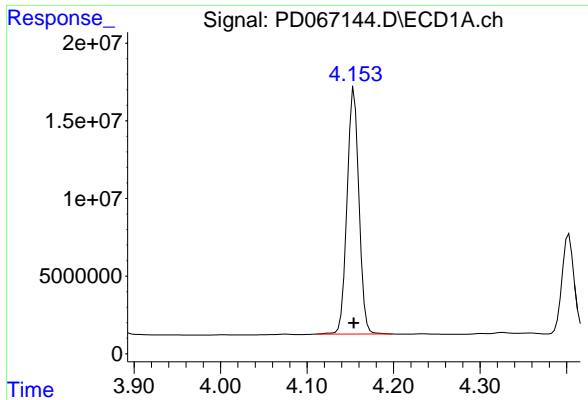
#2 alpha-BHC

R.T.: 3.873 min
 Delta R.T.: 0.000 min
 Response: 162057601
 Conc: 48.25 ng/ml



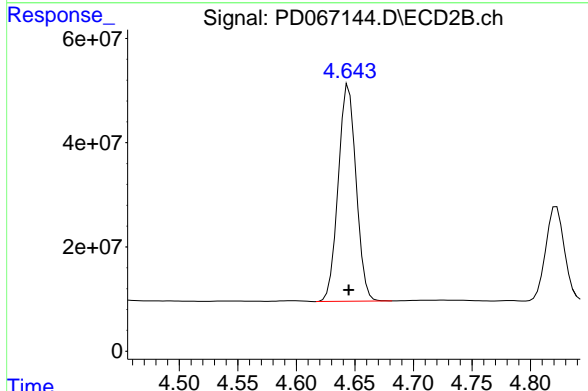
#2 alpha-BHC

R.T.: 4.360 min
 Delta R.T.: 0.000 min
 Response: 481093528
 Conc: 46.23 ng/ml

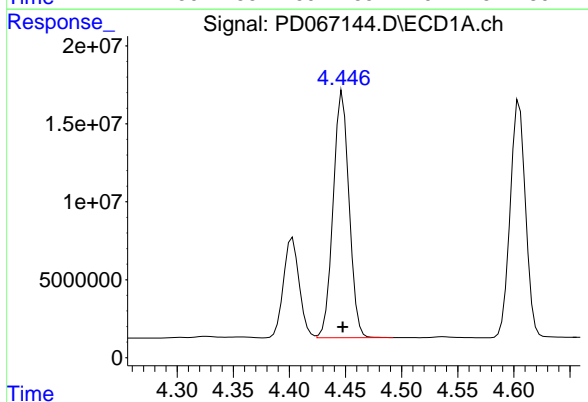


#3 gamma-BHC (Lindane)
R.T.: 4.154 min
Delta R.T.: 0.000 min
Response: 150567885
Conc: 46.85 ng/ml

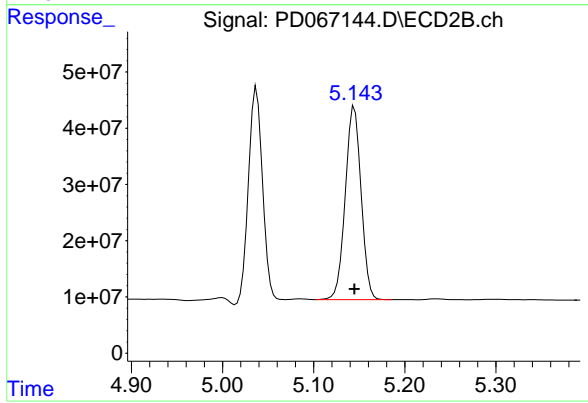
Instrument :
ECD_D
ClientSampleId :



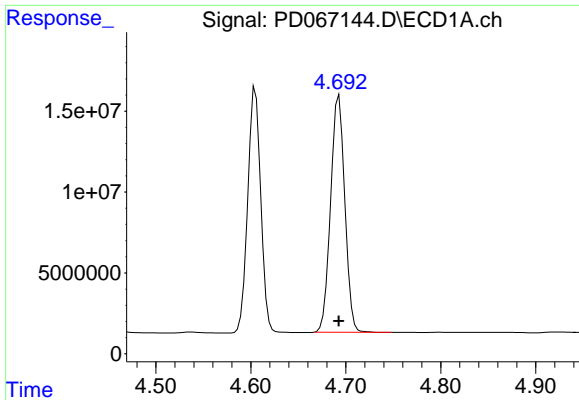
#3 gamma-BHC (Lindane)
R.T.: 4.645 min
Delta R.T.: 0.000 min
Response: 441353598
Conc: 46.31 ng/ml



#4 Heptachlor
R.T.: 4.447 min
Delta R.T.: 0.000 min
Response: 156152104
Conc: 48.00 ng/ml

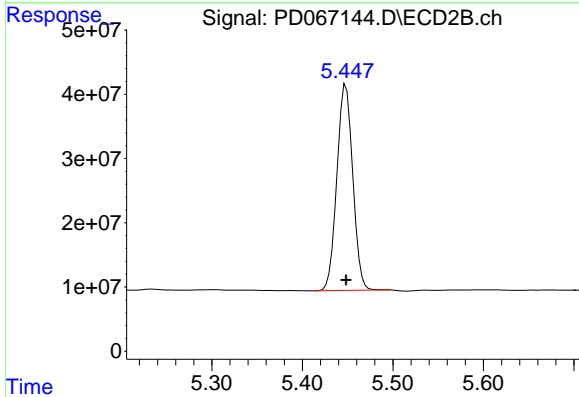


#4 Heptachlor
R.T.: 5.145 min
Delta R.T.: 0.000 min
Response: 414544056
Conc: 46.06 ng/ml

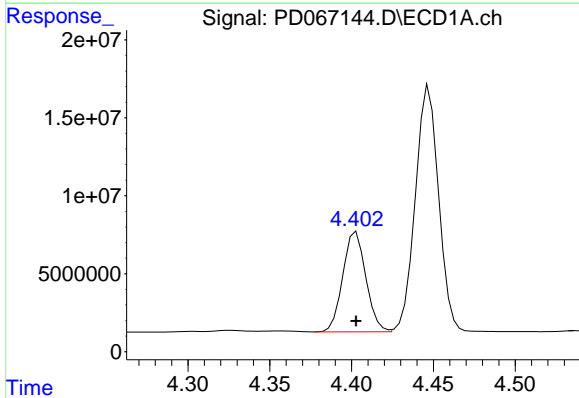


#5 Aldrin
 R.T.: 4.693 min
 Delta R.T.: 0.000 min
 Response: 152457346
 Conc: 47.88 ng/ml

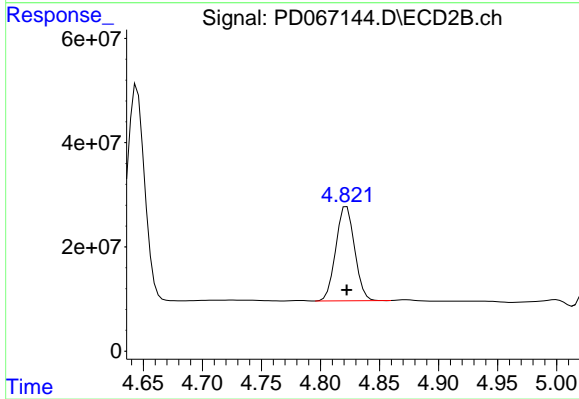
Instrument :
 ECD_D
 ClientSampleId :



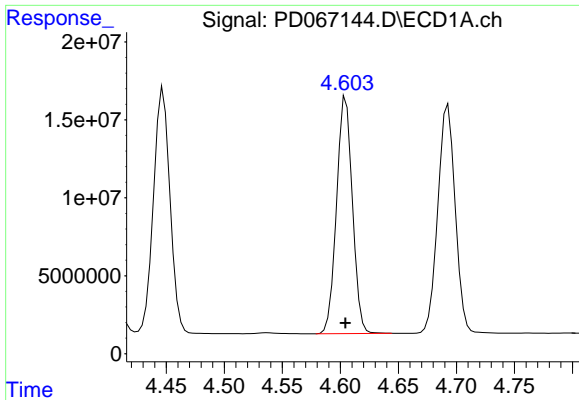
#5 Aldrin
 R.T.: 5.448 min
 Delta R.T.: 0.000 min
 Response: 391207516
 Conc: 46.54 ng/ml



#6 beta-BHC
 R.T.: 4.403 min
 Delta R.T.: 0.000 min
 Response: 62715832
 Conc: 45.95 ng/ml



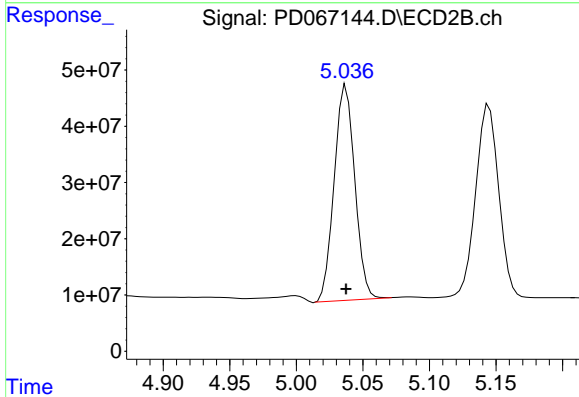
#6 beta-BHC
 R.T.: 4.822 min
 Delta R.T.: 0.000 min
 Response: 200877591
 Conc: 45.57 ng/ml



#7 delta-BHC

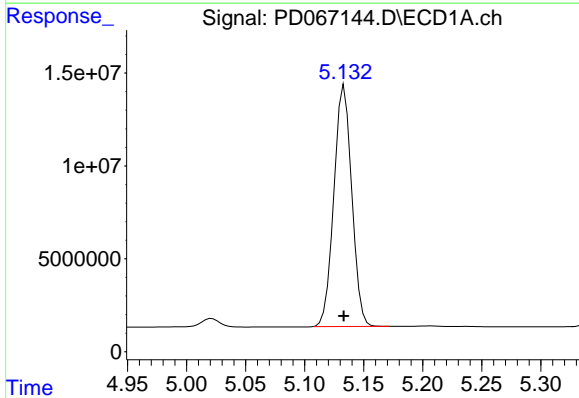
R.T.: 4.605 min
Delta R.T.: 0.000 min
Response: 144627026
Conc: 48.36 ng/ml

Instrument :
ECD_D
ClientSampleId :



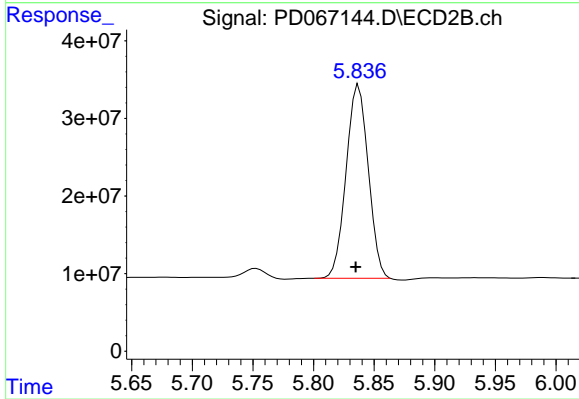
#7 delta-BHC

R.T.: 5.037 min
Delta R.T.: 0.000 min
Response: 412300804
Conc: 44.93 ng/ml



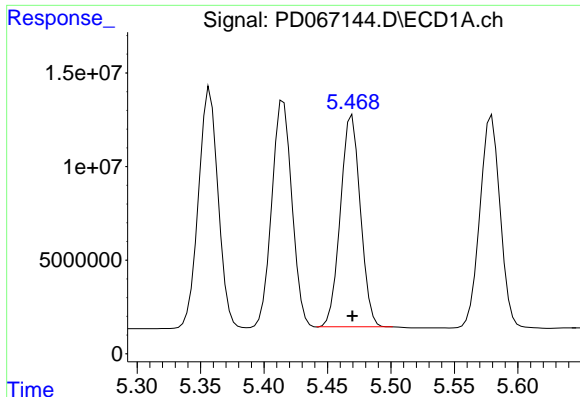
#8 Heptachlor epoxide

R.T.: 5.134 min
Delta R.T.: 0.000 min
Response: 136807132
Conc: 47.49 ng/ml



#8 Heptachlor epoxide

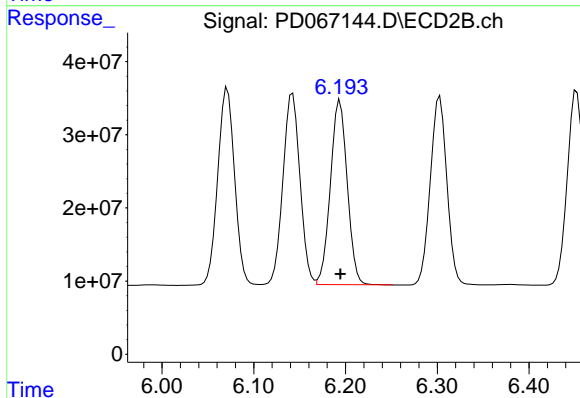
R.T.: 5.837 min
Delta R.T.: 0.003 min
Response: 317026372
Conc: 45.21 ng/ml



#9 Endosulfan I

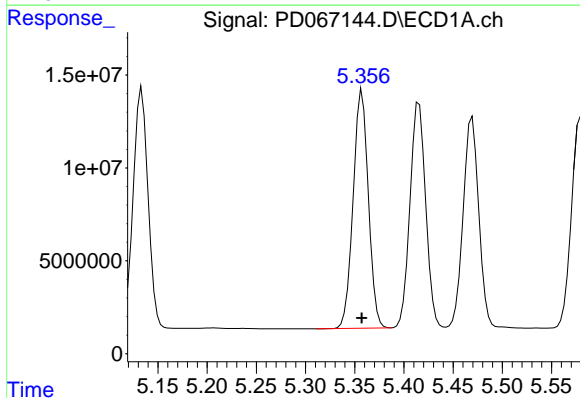
R.T.: 5.469 min
 Delta R.T.: 0.000 min
 Response: 123651376
 Conc: 47.42 ng/ml

Instrument :
 ECD_D
 ClientSampleId :



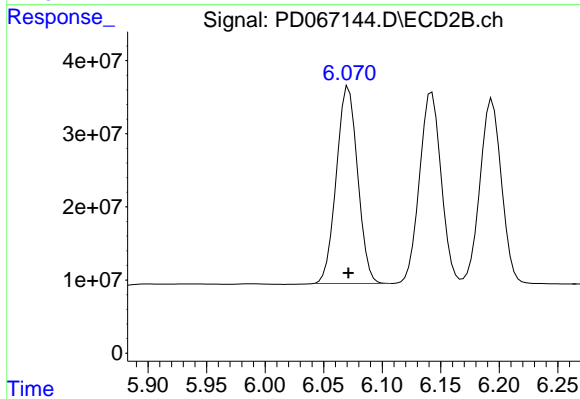
#9 Endosulfan I

R.T.: 6.194 min
 Delta R.T.: 0.000 min
 Response: 32222462
 Conc: 46.31 ng/ml



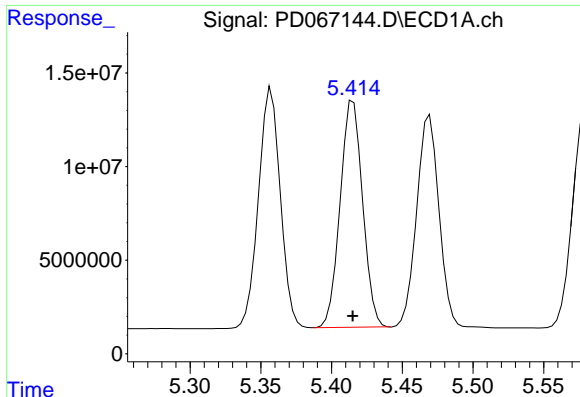
#10 gamma-Chlordane

R.T.: 5.358 min
 Delta R.T.: 0.000 min
 Response: 137826938
 Conc: 47.39 ng/ml



#10 gamma-Chlordane

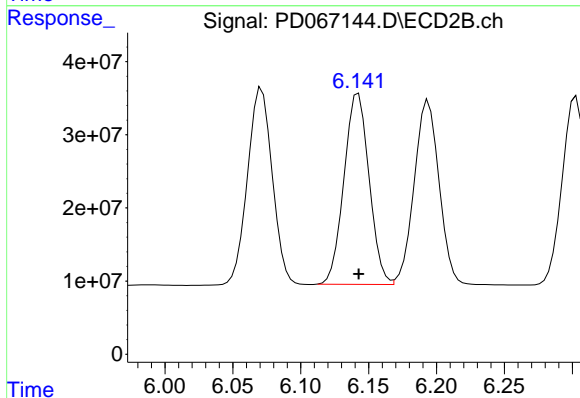
R.T.: 6.071 min
 Delta R.T.: 0.000 min
 Response: 340667303
 Conc: 46.29 ng/ml



#11 alpha-Chlordane

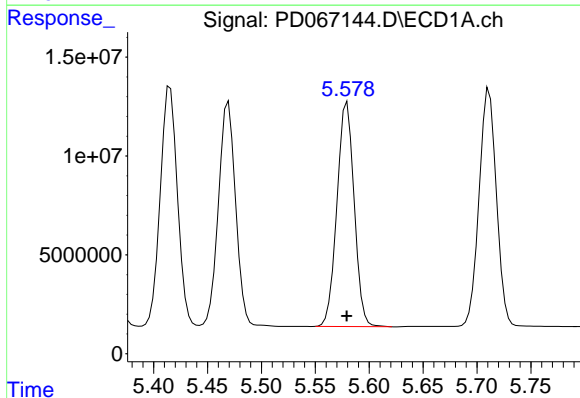
R.T.: 5.415 min
 Delta R.T.: 0.000 min
 Response: 134010907
 Conc: 47.17 ng/ml

Instrument :
 ECD_D
 ClientSampleId :



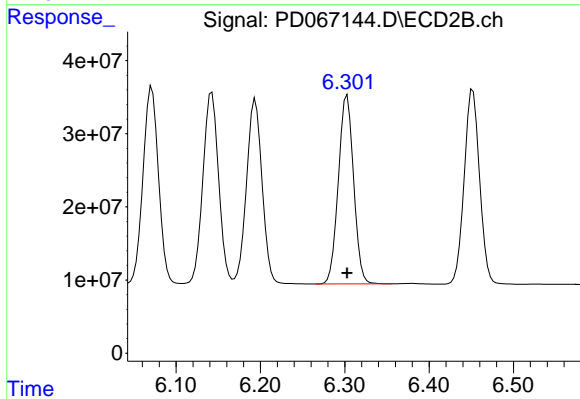
#11 alpha-Chlordane

R.T.: 6.142 min
 Delta R.T.: 0.000 min
 Response: 336362795
 Conc: 46.18 ng/ml



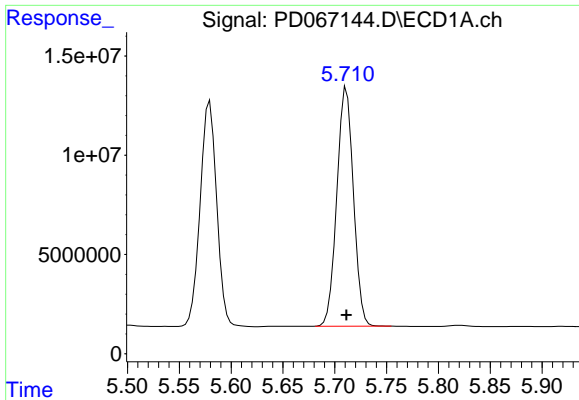
#12 4,4'-DDE

R.T.: 5.580 min
 Delta R.T.: 0.000 min
 Response: 126091867
 Conc: 46.99 ng/ml



#12 4,4'-DDE

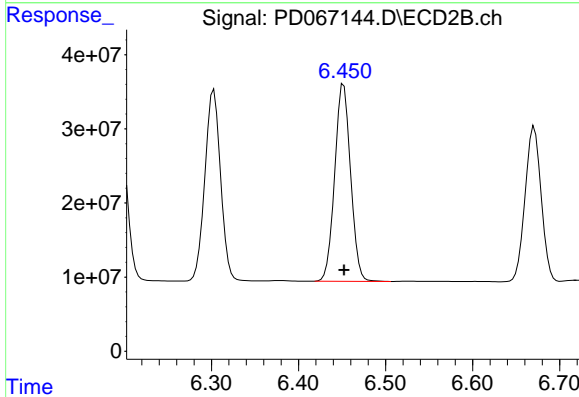
R.T.: 6.303 min
 Delta R.T.: 0.000 min
 Response: 323908302
 Conc: 46.81 ng/ml



#13 Dieldrin

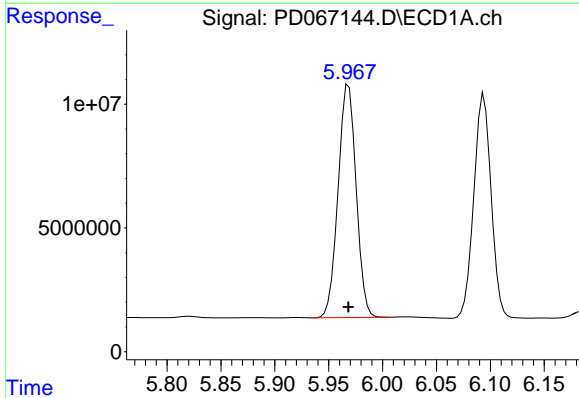
R.T.: 5.711 min
 Delta R.T.: 0.000 min
 Response: 134100853
 Conc: 47.97 ng/ml

Instrument :
 ECD_D
 ClientSampleId :



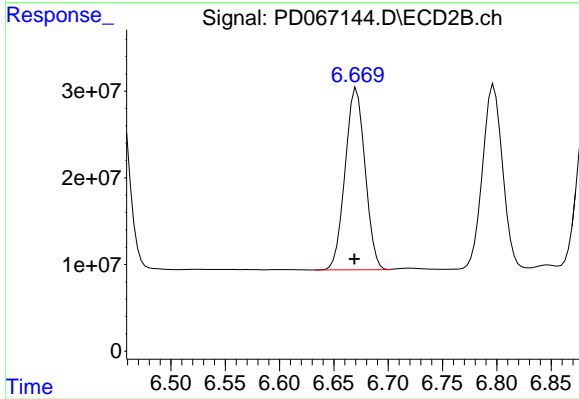
#13 Dieldrin

R.T.: 6.452 min
 Delta R.T.: 0.000 min
 Response: 337916234
 Conc: 46.08 ng/ml



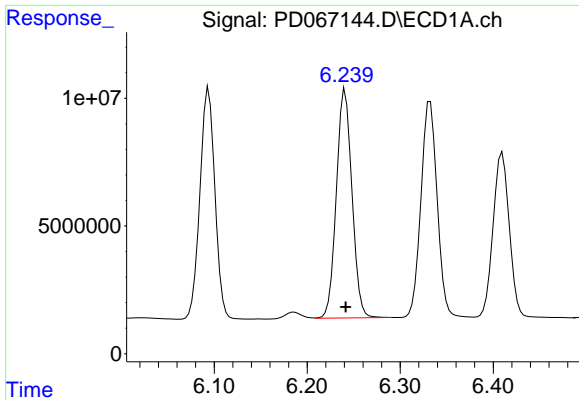
#14 Endrin

R.T.: 5.969 min
 Delta R.T.: 0.000 min
 Response: 109744238
 Conc: 48.06 ng/ml



#14 Endrin

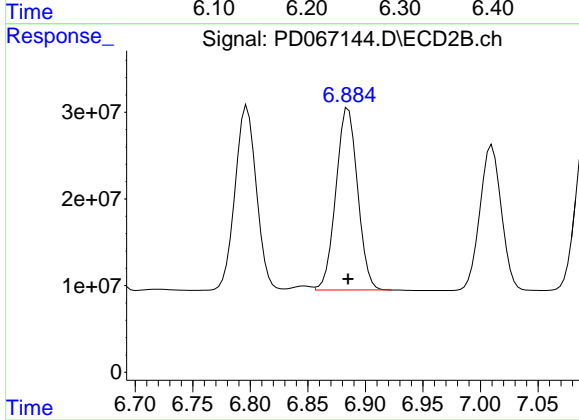
R.T.: 6.671 min
 Delta R.T.: 0.002 min
 Response: 268081746
 Conc: 47.75 ng/ml



#15 Endosulfan II

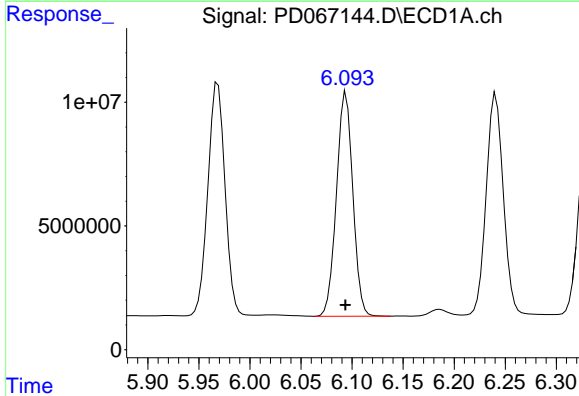
R.T.: 6.241 min
 Delta R.T.: 0.000 min
 Response: 104286731
 Conc: 46.55 ng/ml

Instrument :
 ECD_D
 ClientSampleId :



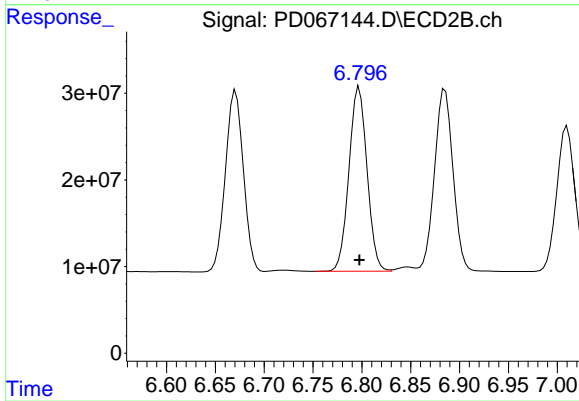
#15 Endosulfan II

R.T.: 6.885 min
 Delta R.T.: 0.000 min
 Response: 276391304
 Conc: 46.05 ng/ml



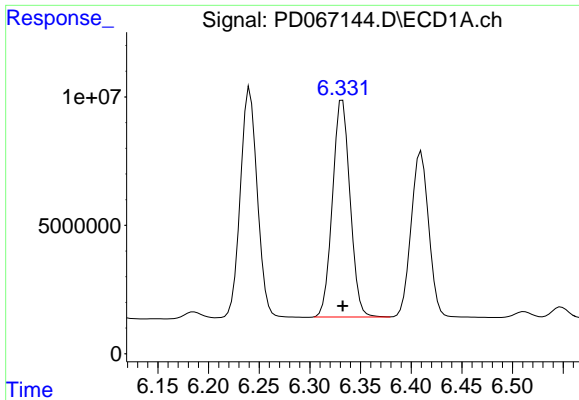
#16 4,4'-DDD

R.T.: 6.094 min
 Delta R.T.: 0.000 min
 Response: 101207167
 Conc: 48.16 ng/ml



#16 4,4'-DDD

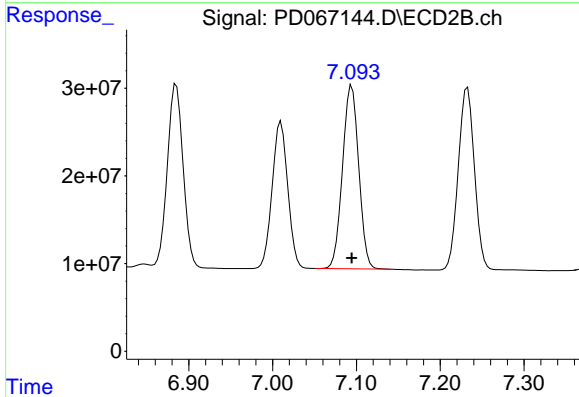
R.T.: 6.797 min
 Delta R.T.: 0.000 min
 Response: 273808360
 Conc: 46.82 ng/ml



#17 4,4'-DDT

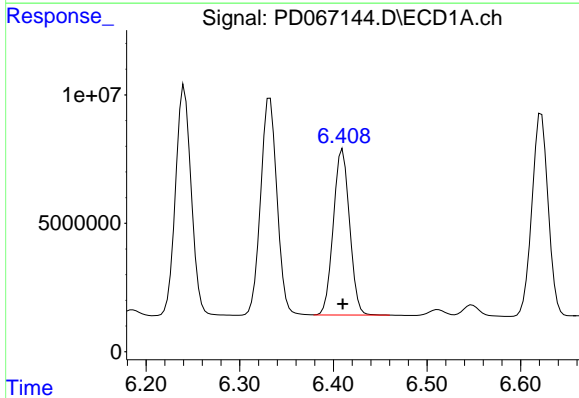
R.T.: 6.332 min
 Delta R.T.: 0.000 min
 Response: 102229595
 Conc: 48.32 ng/ml

Instrument :
 ECD_D
 ClientSampleId :



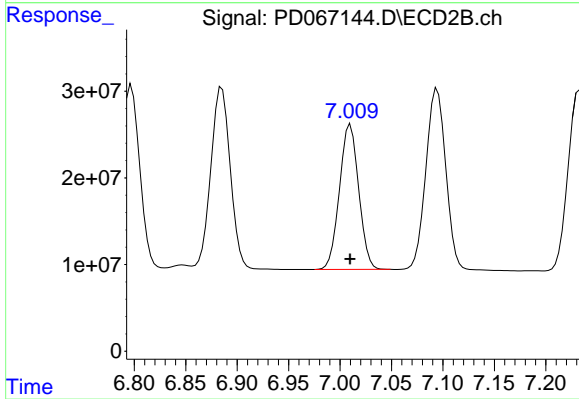
#17 4,4'-DDT

R.T.: 7.095 min
 Delta R.T.: 0.000 min
 Response: 281319315
 Conc: 47.14 ng/ml



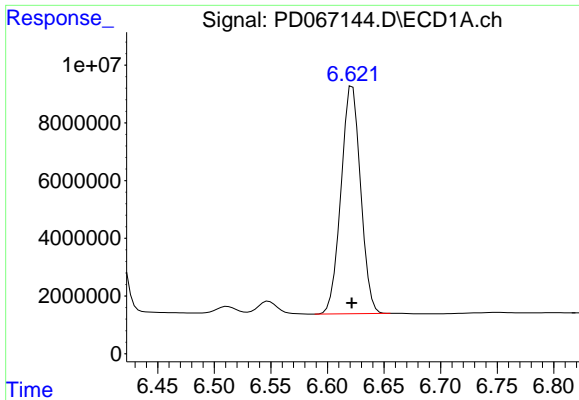
#18 Endrin aldehyde

R.T.: 6.410 min
 Delta R.T.: 0.000 min
 Response: 77926498
 Conc: 46.60 ng/ml



#18 Endrin aldehyde

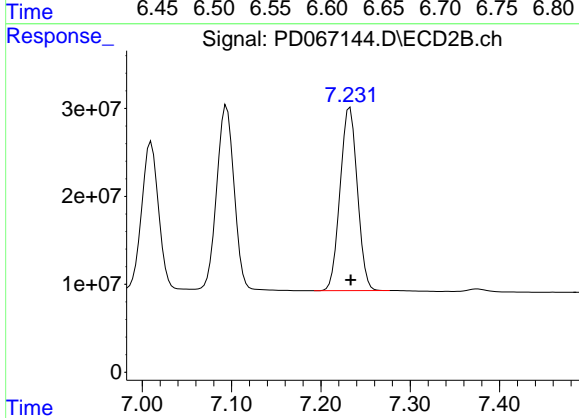
R.T.: 7.010 min
 Delta R.T.: 0.000 min
 Response: 217714315
 Conc: 46.42 ng/ml



#19 Endosulfan Sulfate

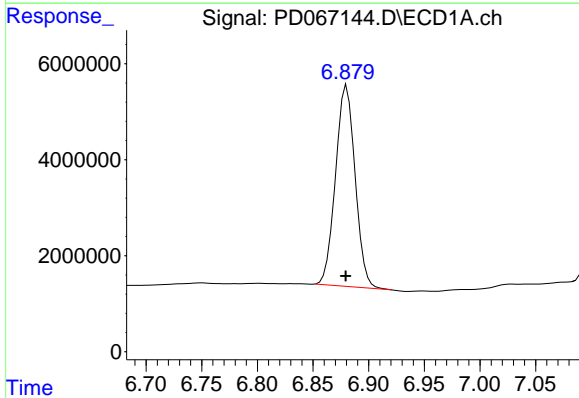
R.T.: 6.622 min
 Delta R.T.: 0.000 min
 Response: 94995625
 Conc: 46.84 ng/ml

Instrument :
 ECD_D
 ClientSampleId :



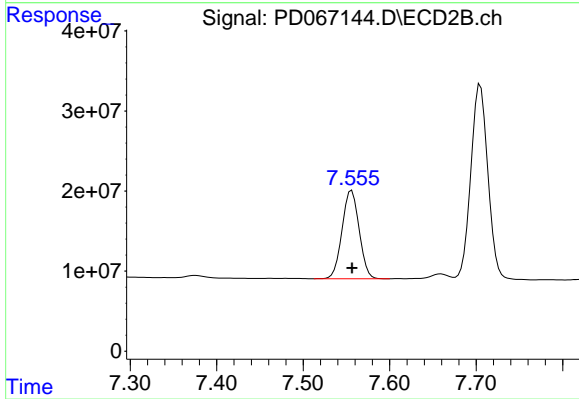
#19 Endosulfan Sulfate

R.T.: 7.233 min
 Delta R.T.: 0.000 min
 Response: 279246144
 Conc: 46.51 ng/ml



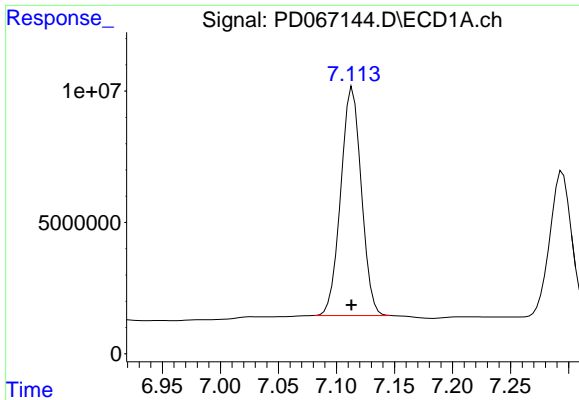
#20 Methoxychlor

R.T.: 6.880 min
 Delta R.T.: 0.001 min
 Response: 51195501
 Conc: 46.15 ng/ml



#20 Methoxychlor

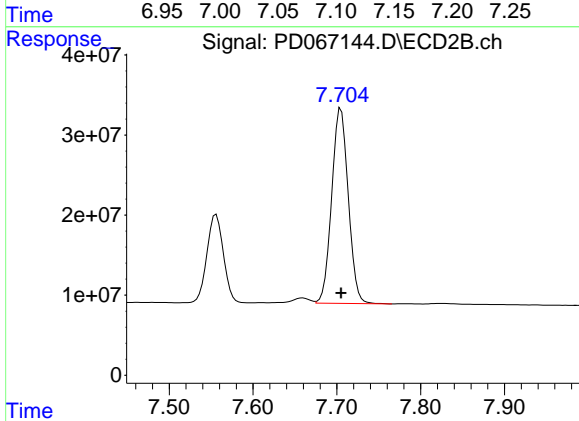
R.T.: 7.556 min
 Delta R.T.: 0.000 min
 Response: 150592033
 Conc: 46.75 ng/ml



#21 Endrin ketone

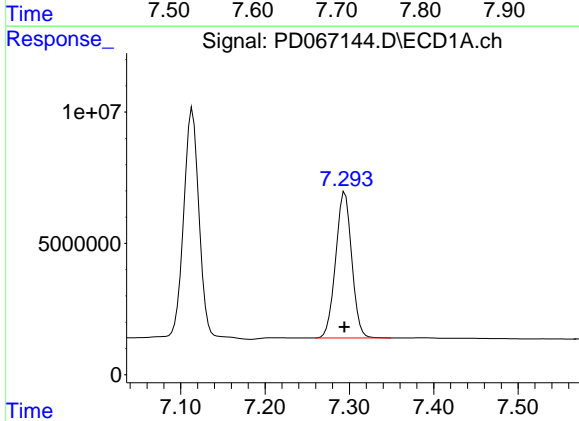
R.T.: 7.114 min
 Delta R.T.: 0.001 min
 Response: 107396285
 Conc: 47.40 ng/ml

Instrument :
 ECD_D
 ClientSampleId :



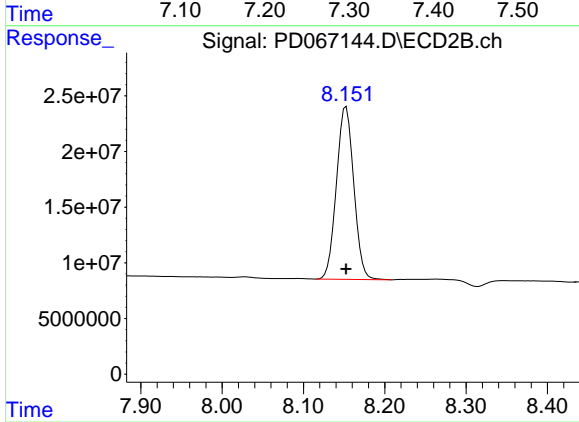
#21 Endrin ketone

R.T.: 7.705 min
 Delta R.T.: 0.000 min
 Response: 334263230
 Conc: 46.22 ng/ml



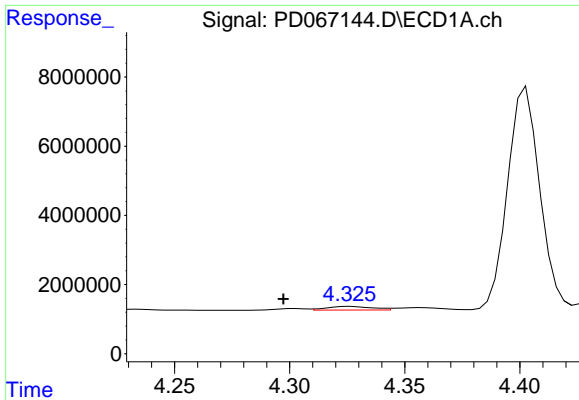
#22 Mirex

R.T.: 7.295 min
 Delta R.T.: 0.000 min
 Response: 73503187
 Conc: 45.82 ng/ml



#22 Mirex

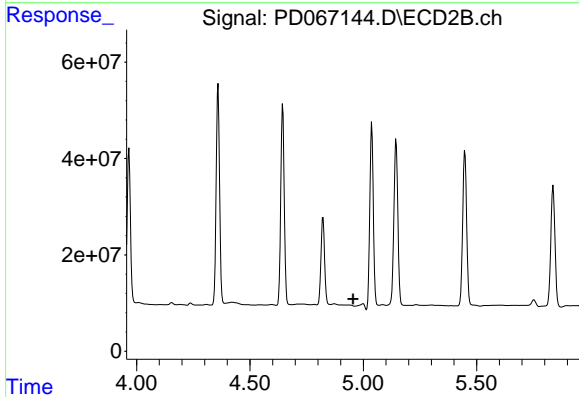
R.T.: 8.153 min
 Delta R.T.: 0.000 min
 Response: 229291156
 Conc: 46.81 ng/ml



#23 Chlordane-1

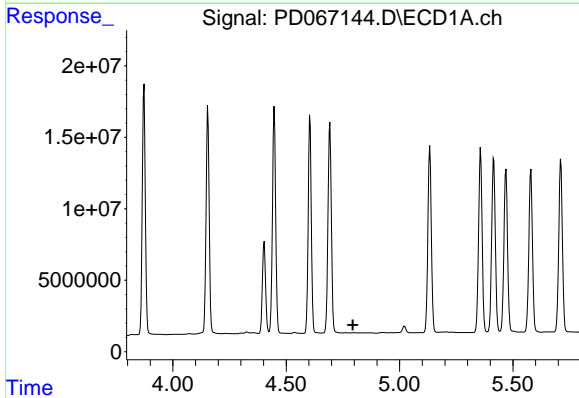
R.T.: 4.326 min
 Delta R.T.: 0.029 min
 Response: 1417976
 Conc: 17.51 ng/ml

Instrument :
 ECD_D
 ClientSampleId :



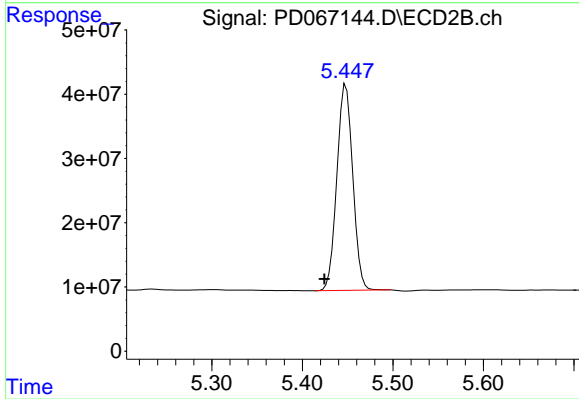
#23 Chlordane-1

R.T.: 0.000 min
 Exp R.T. : 4.955 min
 Response: 0
 Conc: N.D.



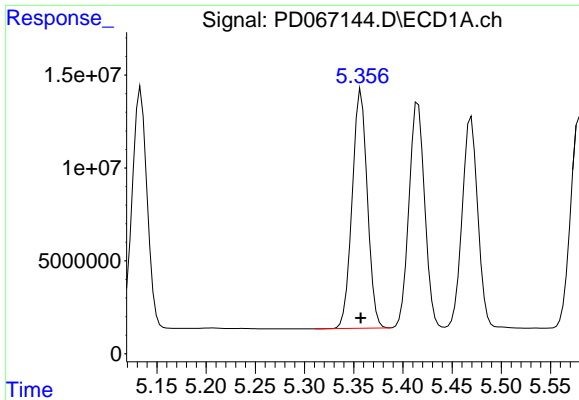
#24 Chlordane-2

R.T.: 0.000 min
 Exp R.T. : 4.794 min
 Response: 0
 Conc: N.D.



#24 Chlordane-2

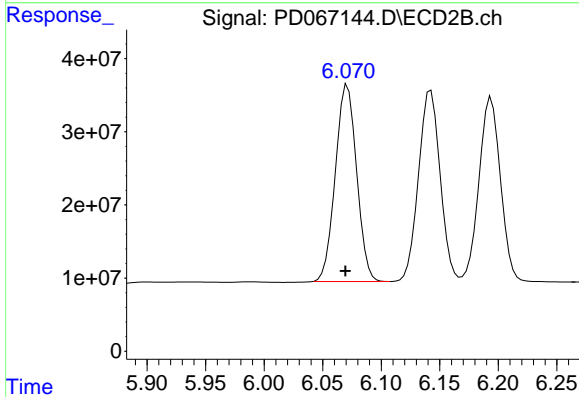
R.T.: 5.448 min
 Delta R.T.: 0.024 min
 Response: 391207516
 Conc: 1466.55 ng/ml



#25 Chlordane-3

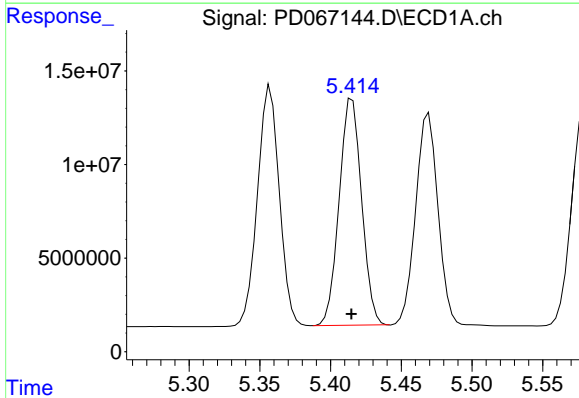
R.T.: 5.358 min
 Delta R.T.: 0.000 min
 Response: 137826938
 Conc: 500.71 ng/ml

Instrument :
 ECD_D
 ClientSampleId :



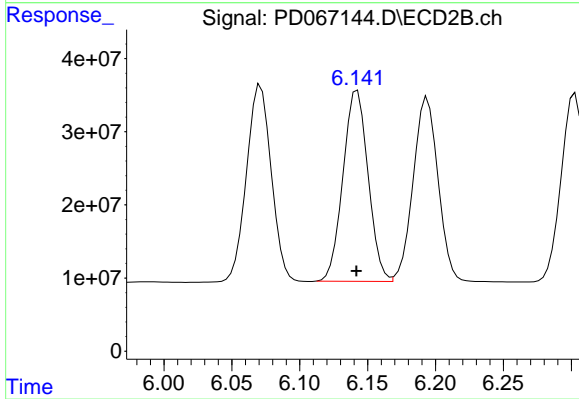
#25 Chlordane-3

R.T.: 6.071 min
 Delta R.T.: 0.002 min
 Response: 340667303
 Conc: 356.63 ng/ml



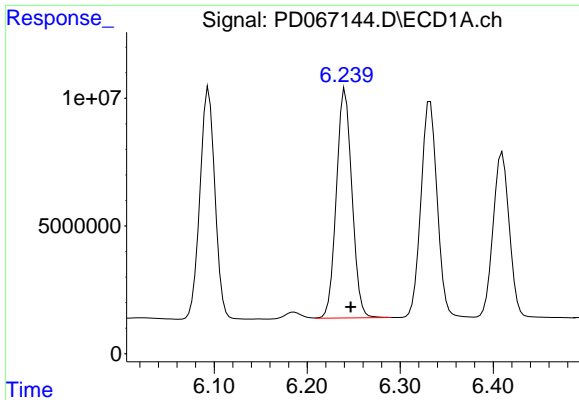
#26 Chlordane-4

R.T.: 5.415 min
 Delta R.T.: 0.000 min
 Response: 134010907
 Conc: 587.09 ng/ml



#26 Chlordane-4

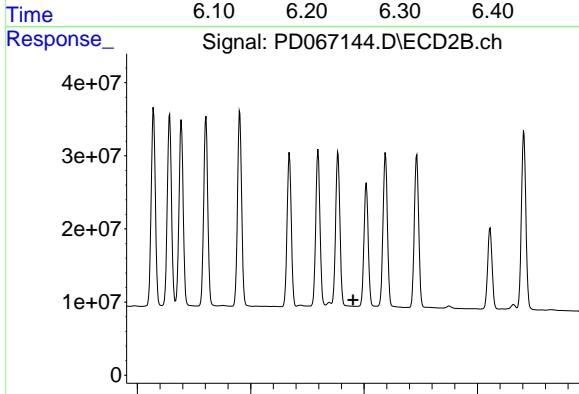
R.T.: 6.142 min
 Delta R.T.: 0.000 min
 Response: 336362795
 Conc: 302.58 ng/ml



#27 Chlordane-5

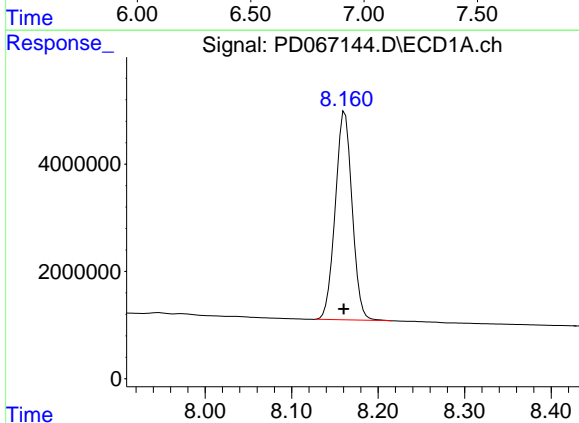
R.T.: 6.241 min
 Delta R.T.: -0.006 min
 Response: 104286731
 Conc: 1147.68 ng/m

Instrument :
 ECD_D
 ClientSampleId :



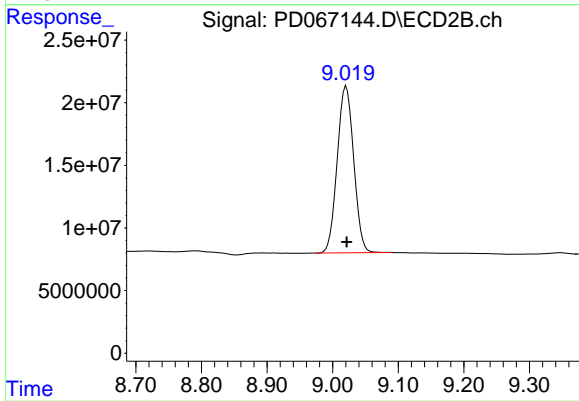
#27 Chlordane-5

R.T.: 0.000 min
 Exp R.T. : 6.952 min
 Response: 0
 Conc: N.D.



#28 Decachlorobiphenyl

R.T.: 8.162 min
 Delta R.T.: 0.001 min
 Response: 52338400
 Conc: 46.19 ng/ml



#28 Decachlorobiphenyl

R.T.: 9.021 min
 Delta R.T.: 0.000 min
 Response: 232763515
 Conc: 46.30 ng/ml