

Data Path : Z:\pestpcbsrv\HPCHEM1\ECD_D\Data\PD113021\
 Data File : PD067150.D
 Signal(s) : Signal #1: ECD1A.ch Signal #2: ECD2B.ch
 Acq On : 30 Nov 2021 11:21
 Operator : AR\AJ
 Sample : PSTDCCC050
 Misc :
 ALS Vial : 4 Sample Multiplier: 1

Instrument :
 ECD_D
 ClientSampleId :

Integration File signal 1: autoint1.e
 Integration File signal 2: autoint2.e
 Quant Time: Dec 01 11:51:33 2021
 Quant Method : Z:\pestpcbsrv\HPCHEM1\ECD_D\Method\PD113021.M
 Quant Title : GC Extractables
 QLast Update : Tue Nov 30 17:33:19 2021
 Response via : Initial Calibration
 Integrator: ChemStation

Volume Inj. : 2 µl
 Signal #1 Phase : ZB-MR2 Signal #2 Phase: ZB-MR1
 Signal #1 Info : 30M x 0.32mm x0.2 Signal #2 Info : 30M x 0.32mm x 0.50µm

	Compound	RT#1	RT#2	Resp#1	Resp#2	ng/ml	ng/ml

System Monitoring Compounds							
1)	SA Tetrachlo...	3.436	3.966	97901248	327.5E6	47.379	45.120
28)	SA Decachlor...	8.161	9.021	52013892	232.5E6	45.908	46.245
Target Compounds							
2)	A alpha-BHC	3.873	4.360	163.4E6	480.6E6	48.635	46.183
3)	MA gamma-BHC...	4.154	4.645	151.0E6	439.5E6	46.999	46.116
4)	MA Heptachlor	4.448	5.145	155.2E6	407.4E6	47.701	45.264
5)	MB Aldrin	4.692	5.448	153.9E6	383.1E6	48.339	45.578
6)	B beta-BHC	4.403	4.822	62950638	199.2E6	46.118	45.186
7)	B delta-BHC	4.605	5.037	146.4E6	409.5E6	48.952	44.620
8)	Heptachlo...	5.133	5.837	136.4E6	370.4E6	47.360	52.823
9)	A Endosulfan I	5.470	6.194	123.6E6	322.6E6	47.384	46.371
10)	B gamma-Chl...	5.357	6.071	139.1E6	338.3E6	47.844	45.966
11)	B alpha-Chl...	5.415	6.142	134.8E6	336.5E6	47.435	46.200
12)	B 4,4'-DDE	5.579	6.303	130.3E6	320.2E6	48.572	46.269
13)	MA Dieldrin	5.711	6.452	133.2E6	350.7E6	47.641	47.827
14)	MA Endrin	5.969	6.669	107.4E6	249.3E6	47.057	44.398
15)	B Endosulfa...	6.241	6.885	103.5E6	278.5E6	46.194	46.398
16)	A 4,4'-DDD	6.094	6.797	101.6E6	272.0E6	48.345	46.515
17)	MA 4,4'-DDT	6.333	7.094	99526627	277.0E6	47.038	46.406
18)	B Endrin al...	6.410	7.010	77254952	217.4E6	46.196	46.357
19)	B Endosulfa...	6.621	7.233	93162813	279.6E6	45.935	46.567
20)	A Methoxychlor	6.880	7.556	49895958	141.5E6	44.983	43.937
21)	B Endrin ke...	7.114	7.705	105.2E6	338.0E6	46.440	46.732
22)	Mirex	7.294	8.152	72968600	224.1E6	45.488	45.764
23)	Chlordane-1	4.326f	4.939f	1596287	4251902	19.706	16.912
24)	Chlordane-2	0.000	5.448f	0	383.1E6	N.D.	1436.283 #
25)	Chlordane-3	5.357	6.071	139.1E6	338.3E6	505.494	354.168 #
26)	Chlordane-4	5.415	6.142	134.8E6	336.5E6	590.358	302.718 #
27)	Chlordane-5	6.241	0.000	103.5E6	0	1138.892	N.D. #

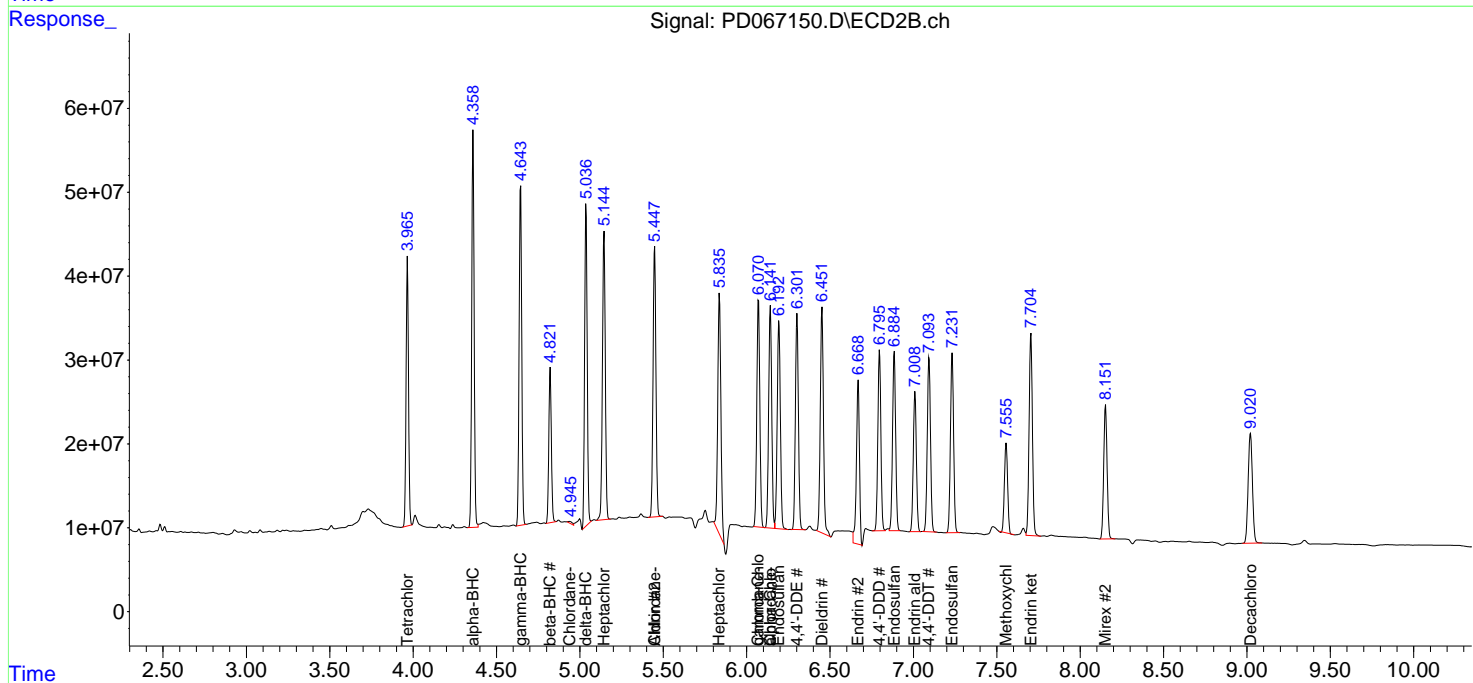
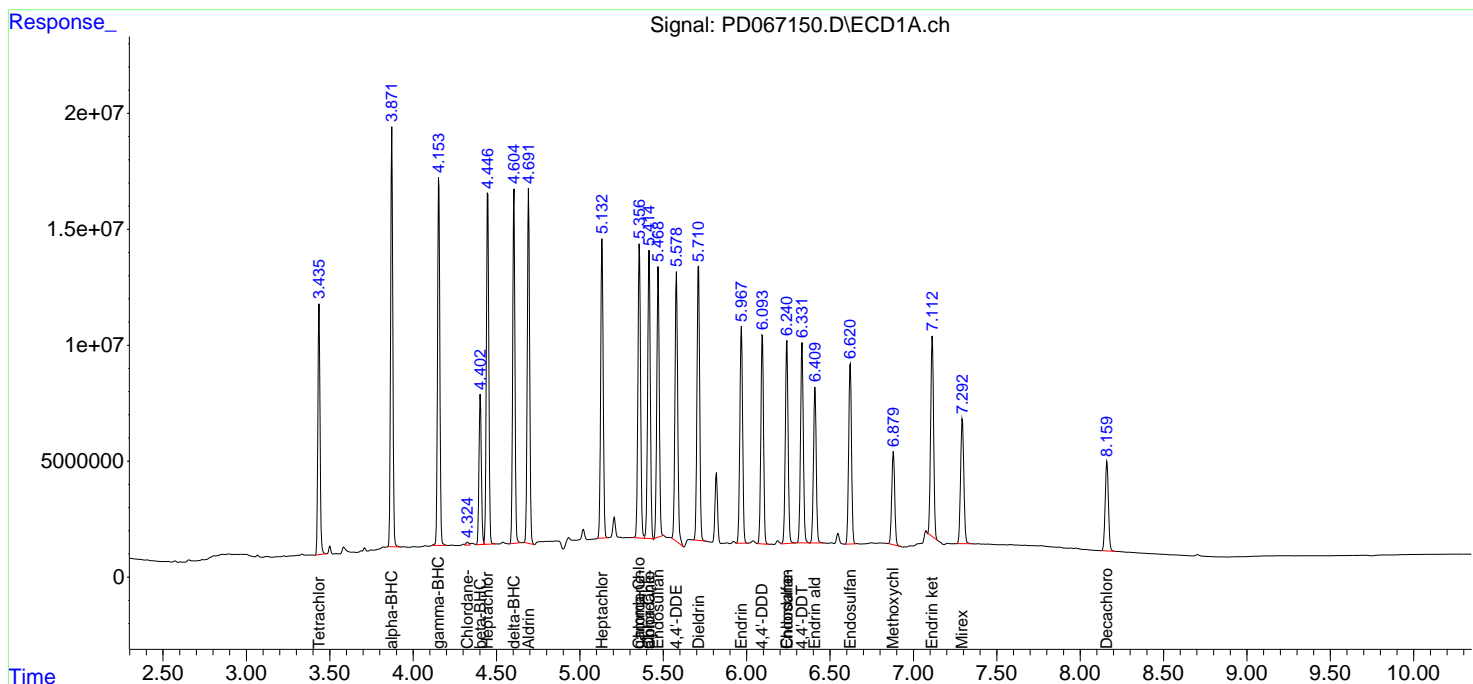
(f)=RT Delta > 1/2 Window (#)=Amounts differ by > 25% (m)=manual int.

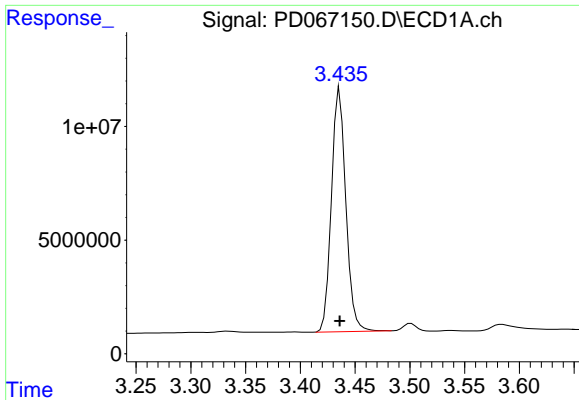
Data Path : Z:\pestpcbsrv\HPCHEM1\ECD_D\Data\PD113021\
 Data File : PD067150.D
 Signal(s) : Signal #1: ECD1A.ch Signal #2: ECD2B.ch
 Acq On : 30 Nov 2021 11:21
 Operator : AR\AJ
 Sample : PSTDCCC050
 Misc :
 ALS Vial : 4 Sample Multiplier: 1

Instrument :
 ECD_D
 ClientSampleId :

Integration File signal 1: autoint1.e
 Integration File signal 2: autoint2.e
 Quant Time: Dec 01 11:51:33 2021
 Quant Method : Z:\pestpcbsrv\HPCHEM1\ECD_D\Method\PD113021.M
 Quant Title : GC Extractables
 QLast Update : Tue Nov 30 17:33:19 2021
 Response via : Initial Calibration
 Integrator: ChemStation

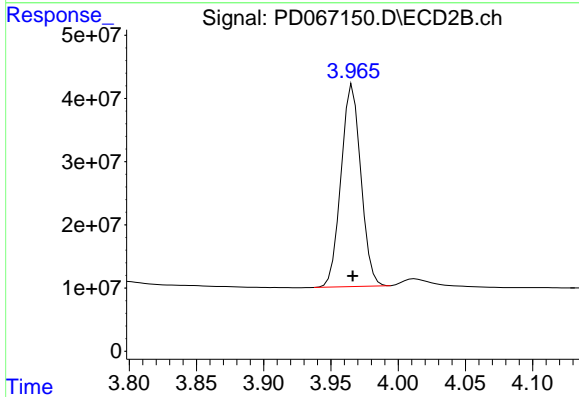
Volume Inj. : 2 µl
 Signal #1 Phase : ZB-MR2 Signal #2 Phase: ZB-MR1
 Signal #1 Info : 30M x 0.32mm x0.2 Signal #2 Info : 30M x 0.32mm x 0.50µm



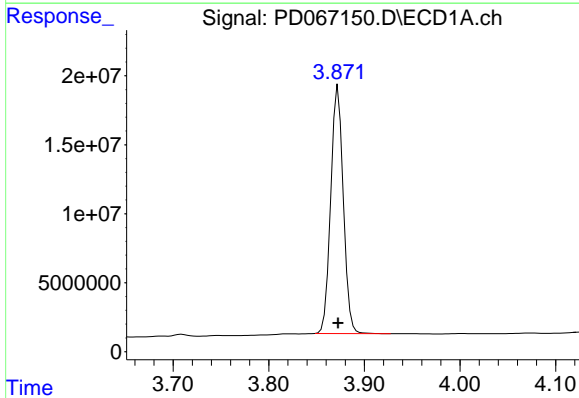


#1 Tetrachloro-m-xylene
 R.T.: 3.436 min
 Delta R.T.: 0.000 min
 Response: 97901248
 Conc: 47.38 ng/ml

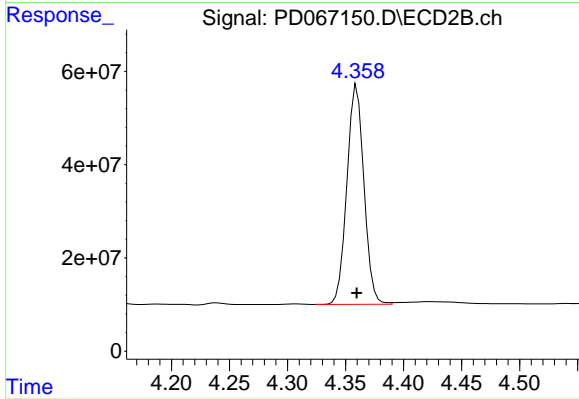
Instrument :
 ECD_D
 ClientSampleId :



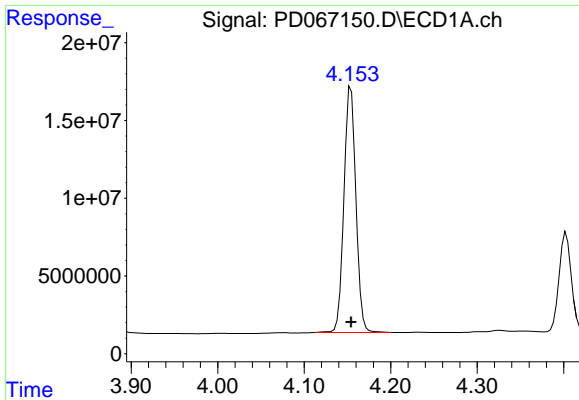
#1 Tetrachloro-m-xylene
 R.T.: 3.966 min
 Delta R.T.: 0.000 min
 Response: 327494147
 Conc: 45.12 ng/ml



#2 alpha-BHC
 R.T.: 3.873 min
 Delta R.T.: 0.000 min
 Response: 163365423
 Conc: 48.63 ng/ml

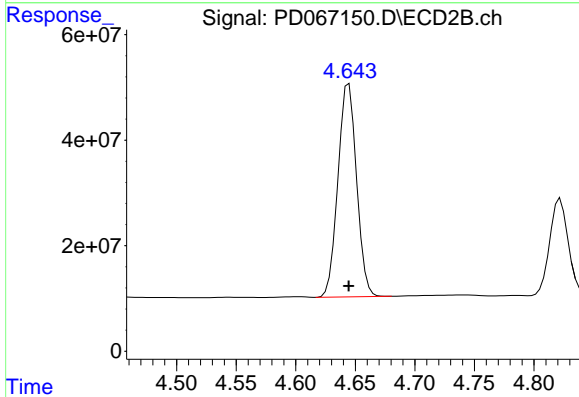


#2 alpha-BHC
 R.T.: 4.360 min
 Delta R.T.: 0.000 min
 Response: 480612721
 Conc: 46.18 ng/ml

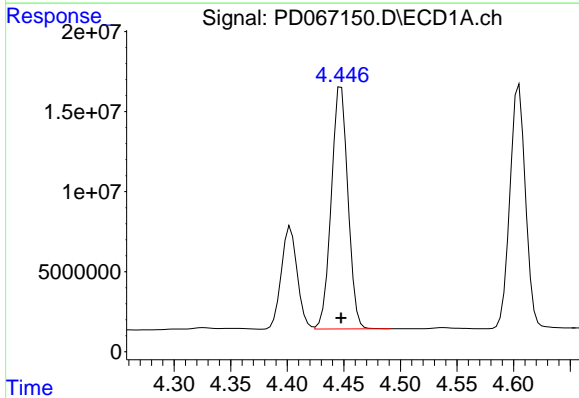


#3 gamma-BHC (Lindane)
 R.T.: 4.154 min
 Delta R.T.: 0.000 min
 Response: 151038403
 Conc: 47.00 ng/ml

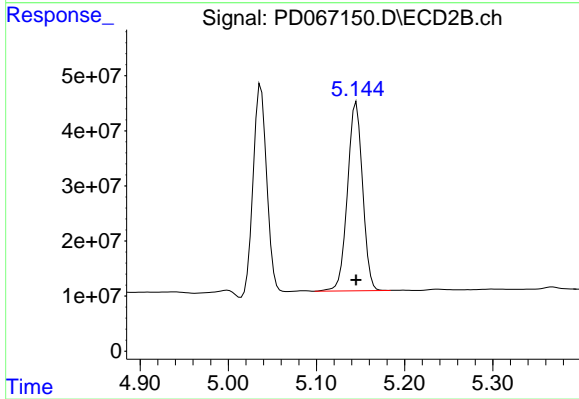
Instrument :
 ECD_D
 ClientSampleId :



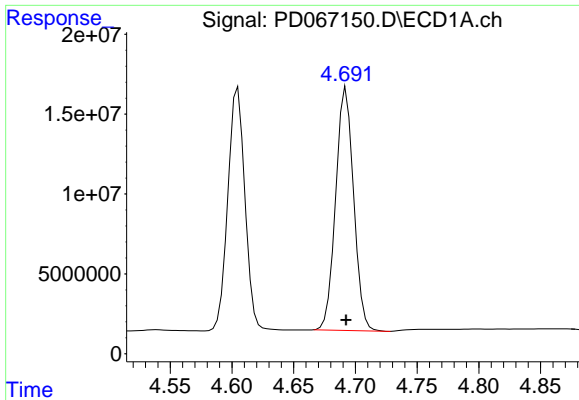
#3 gamma-BHC (Lindane)
 R.T.: 4.645 min
 Delta R.T.: 0.000 min
 Response: 439468450
 Conc: 46.12 ng/ml



#4 Heptachlor
 R.T.: 4.448 min
 Delta R.T.: 0.000 min
 Response: 155193397
 Conc: 47.70 ng/ml

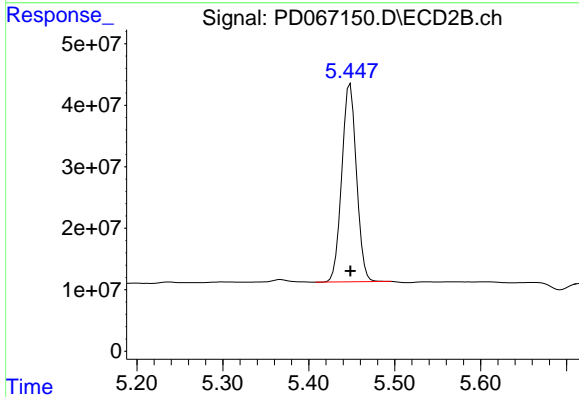


#4 Heptachlor
 R.T.: 5.145 min
 Delta R.T.: 0.000 min
 Response: 407419592
 Conc: 45.26 ng/ml

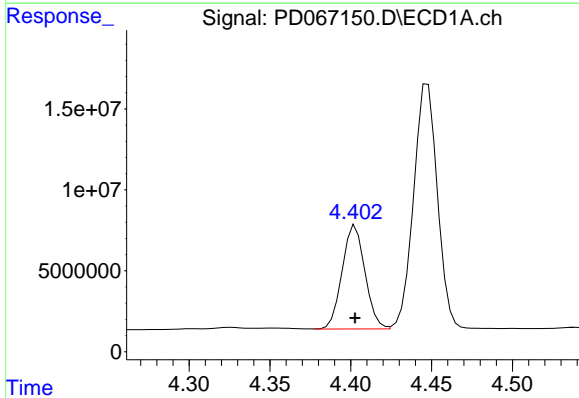


#5 Aldrin
 R.T.: 4.692 min
 Delta R.T.: 0.000 min
 Response: 153926860
 Conc: 48.34 ng/ml

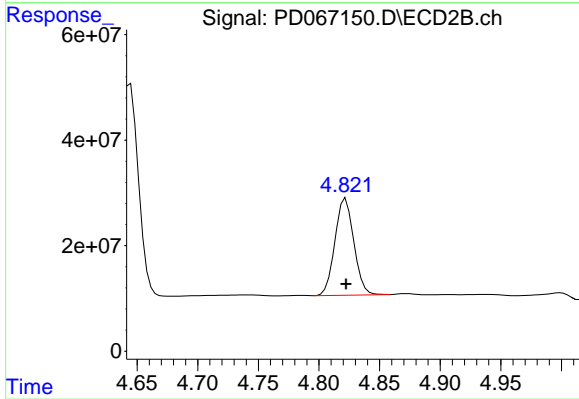
Instrument :
 ECD_D
 ClientSampleId :



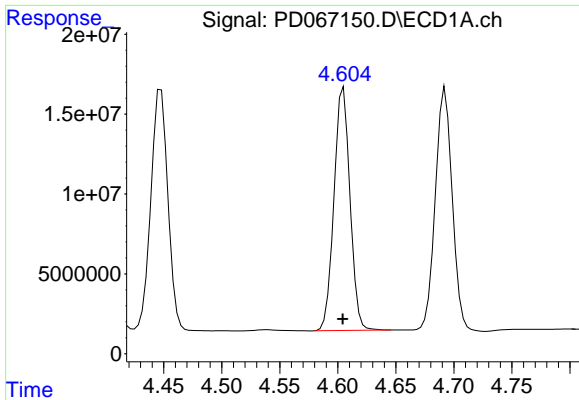
#5 Aldrin
 R.T.: 5.448 min
 Delta R.T.: 0.000 min
 Response: 383132474
 Conc: 45.58 ng/ml



#6 beta-BHC
 R.T.: 4.403 min
 Delta R.T.: 0.000 min
 Response: 62950638
 Conc: 46.12 ng/ml



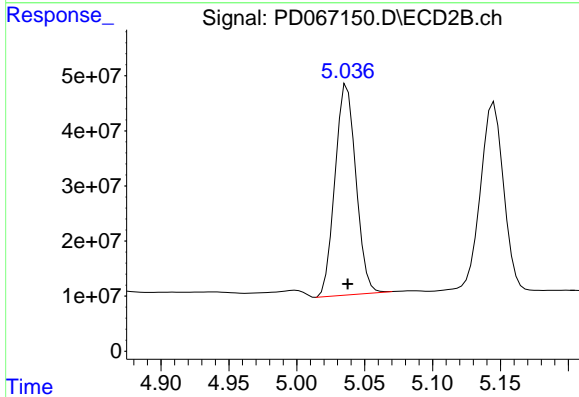
#6 beta-BHC
 R.T.: 4.822 min
 Delta R.T.: 0.000 min
 Response: 199189743
 Conc: 45.19 ng/ml



#7 delta-BHC

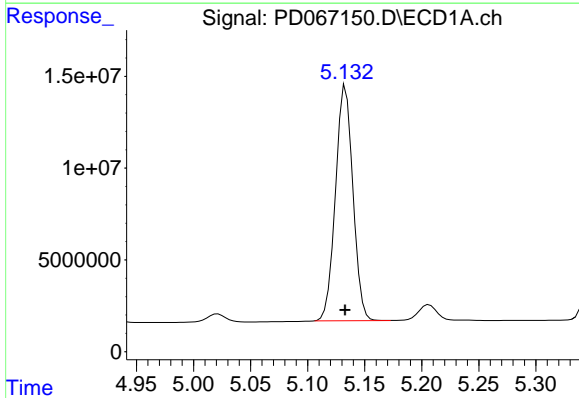
R.T.: 4.605 min
 Delta R.T.: 0.000 min
 Response: 146390630
 Conc: 48.95 ng/ml

Instrument :
 ECD_D
 ClientSampleId :



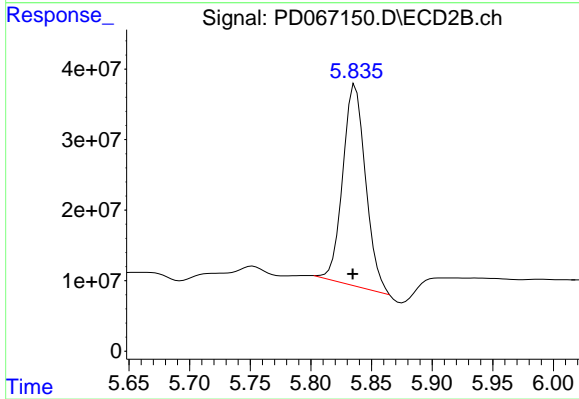
#7 delta-BHC

R.T.: 5.037 min
 Delta R.T.: 0.000 min
 Response: 409489511
 Conc: 44.62 ng/ml



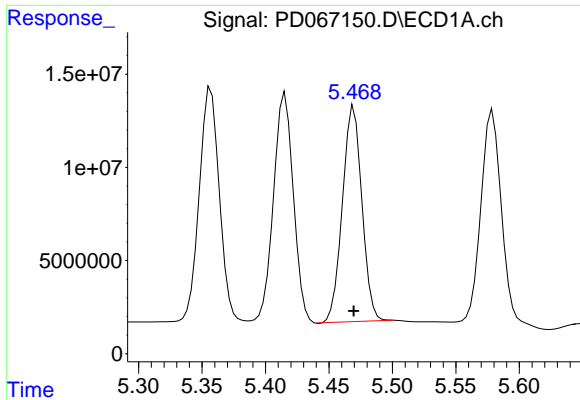
#8 Heptachlor epoxide

R.T.: 5.133 min
 Delta R.T.: 0.000 min
 Response: 136426983
 Conc: 47.36 ng/ml



#8 Heptachlor epoxide

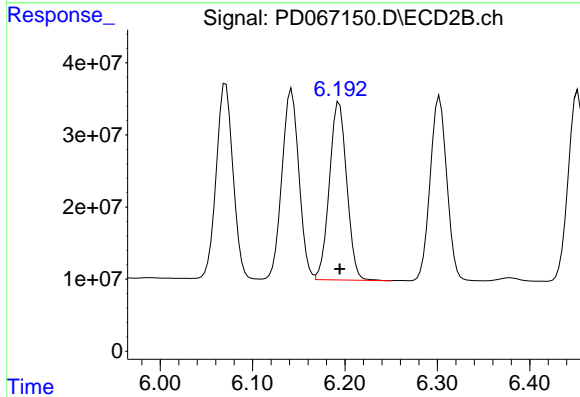
R.T.: 5.837 min
 Delta R.T.: 0.002 min
 Response: 370378615
 Conc: 52.82 ng/ml



#9 Endosulfan I

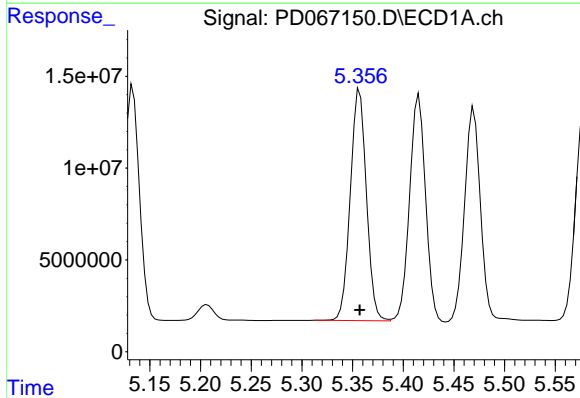
R.T.: 5.470 min
 Delta R.T.: 0.000 min
 Response: 123556068
 Conc: 47.38 ng/ml

Instrument :
 ECD_D
 ClientSampleId :



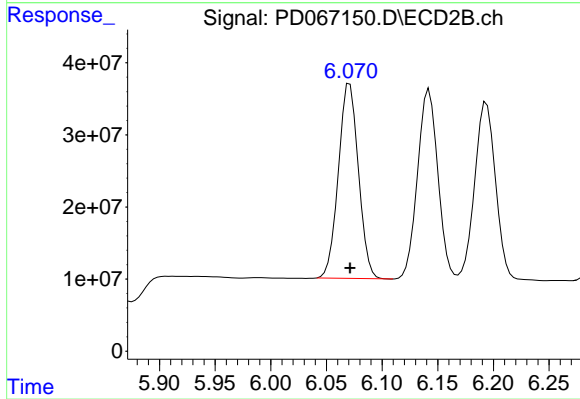
#9 Endosulfan I

R.T.: 6.194 min
 Delta R.T.: 0.000 min
 Response: 322621402
 Conc: 46.37 ng/ml



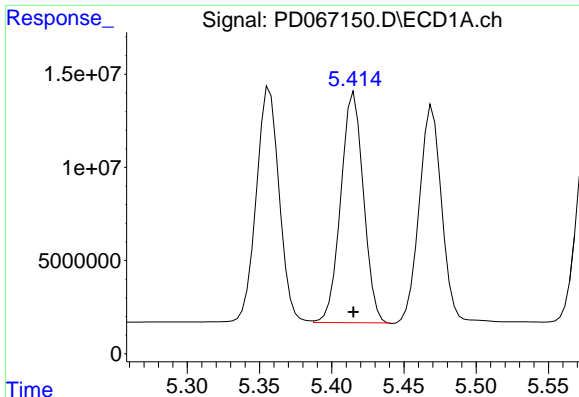
#10 gamma-Chlordane

R.T.: 5.357 min
 Delta R.T.: 0.000 min
 Response: 139143684
 Conc: 47.84 ng/ml



#10 gamma-Chlordane

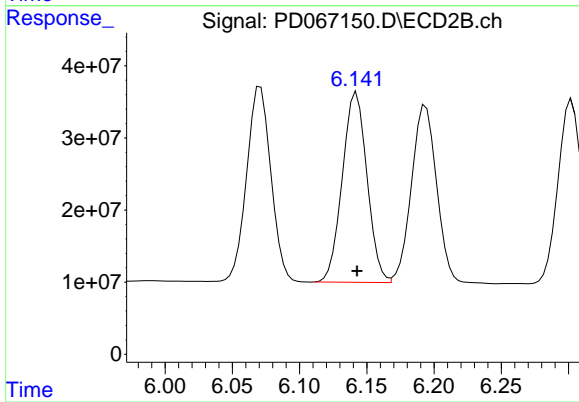
R.T.: 6.071 min
 Delta R.T.: 0.000 min
 Response: 338317845
 Conc: 45.97 ng/ml



#11 alpha-Chlordane

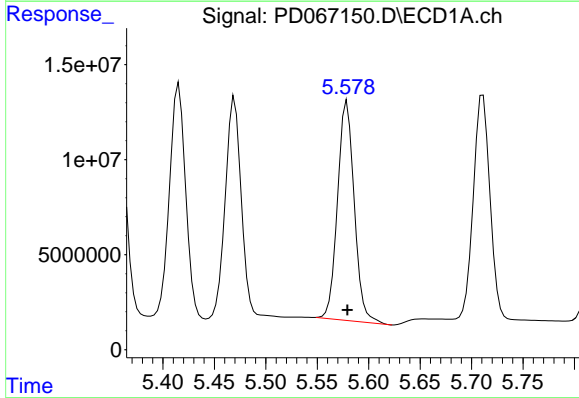
R.T.: 5.415 min
 Delta R.T.: 0.000 min
 Response: 134756912
 Conc: 47.43 ng/ml

Instrument :
 ECD_D
 ClientSampleId :



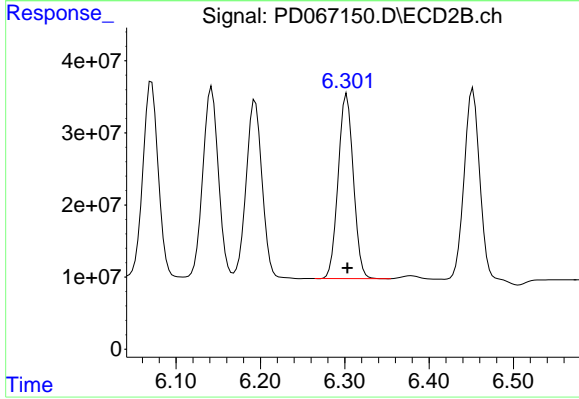
#11 alpha-Chlordane

R.T.: 6.142 min
 Delta R.T.: 0.000 min
 Response: 336518823
 Conc: 46.20 ng/ml



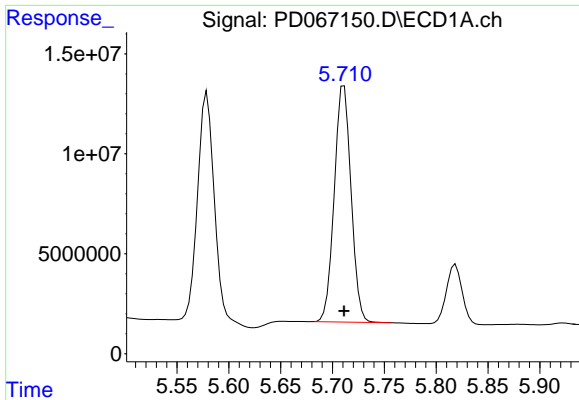
#12 4,4'-DDE

R.T.: 5.579 min
 Delta R.T.: 0.000 min
 Response: 130347480
 Conc: 48.57 ng/ml



#12 4,4'-DDE

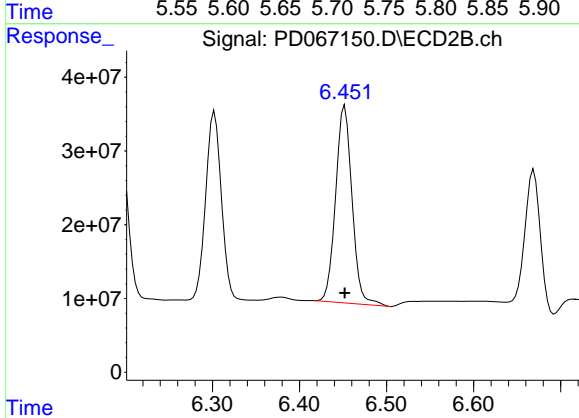
R.T.: 6.303 min
 Delta R.T.: 0.000 min
 Response: 320157466
 Conc: 46.27 ng/ml



#13 Dieldrin

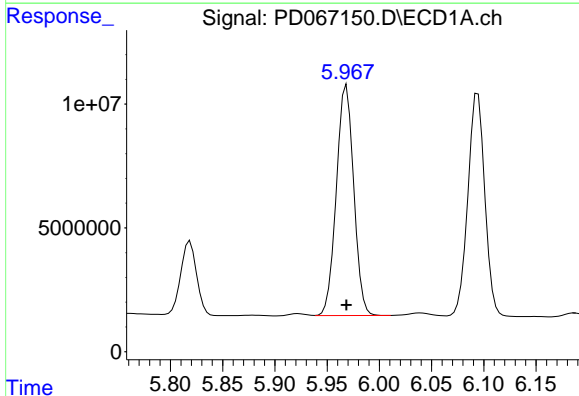
R.T.: 5.711 min
 Delta R.T.: 0.000 min
 Response: 133169979
 Conc: 47.64 ng/ml

Instrument :
 ECD_D
 ClientSampleId :



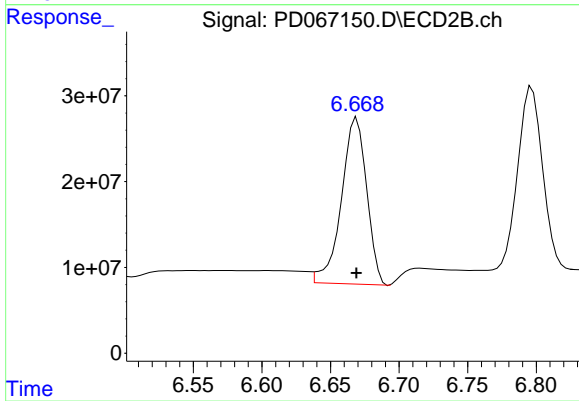
#13 Dieldrin

R.T.: 6.452 min
 Delta R.T.: 0.000 min
 Response: 350748165
 Conc: 47.83 ng/ml



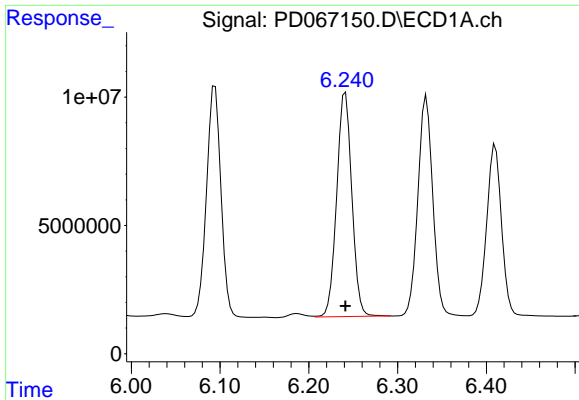
#14 Endrin

R.T.: 5.969 min
 Delta R.T.: 0.000 min
 Response: 107443480
 Conc: 47.06 ng/ml



#14 Endrin

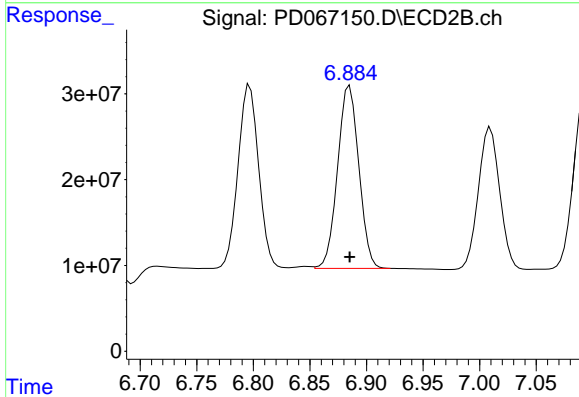
R.T.: 6.669 min
 Delta R.T.: 0.000 min
 Response: 249280650
 Conc: 44.40 ng/ml



#15 Endosulfan II

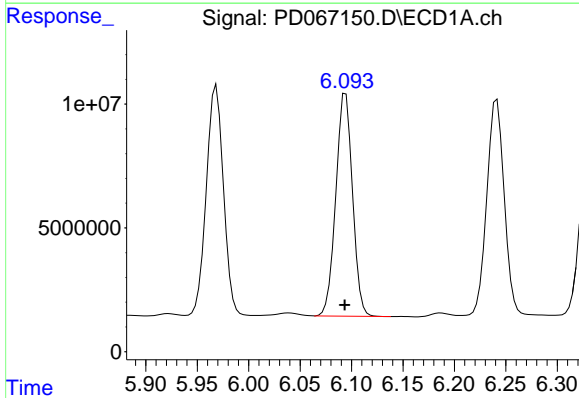
R.T.: 6.241 min
 Delta R.T.: 0.000 min
 Response: 103488093
 Conc: 46.19 ng/ml

Instrument :
 ECD_D
 ClientSampleId :



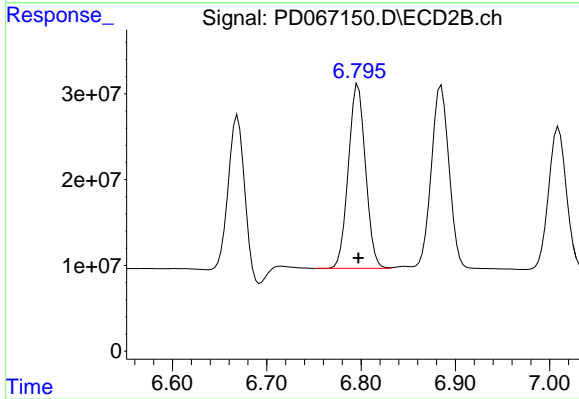
#15 Endosulfan II

R.T.: 6.885 min
 Delta R.T.: 0.000 min
 Response: 278479943
 Conc: 46.40 ng/ml



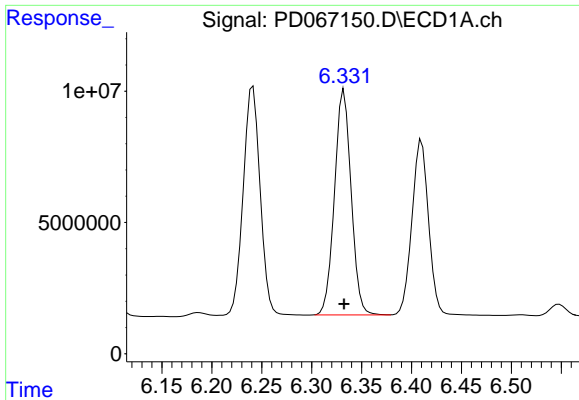
#16 4,4'-DDD

R.T.: 6.094 min
 Delta R.T.: 0.000 min
 Response: 101599389
 Conc: 48.34 ng/ml



#16 4,4'-DDD

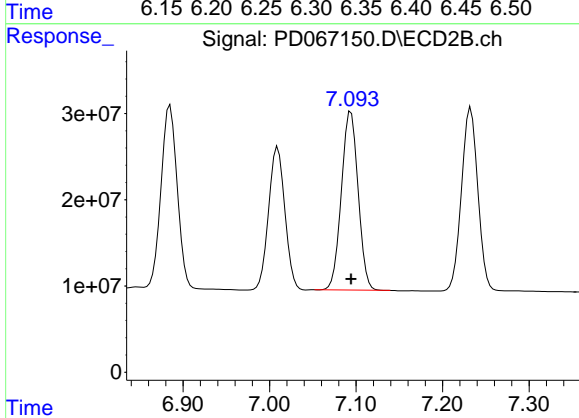
R.T.: 6.797 min
 Delta R.T.: 0.000 min
 Response: 272030704
 Conc: 46.52 ng/ml



#17 4,4'-DDT

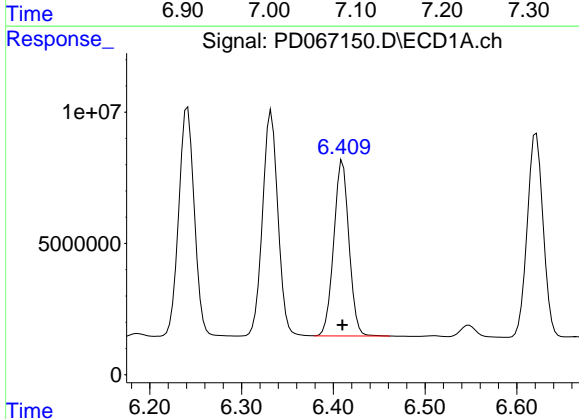
R.T.: 6.333 min
 Delta R.T.: 0.000 min
 Response: 99526627
 Conc: 47.04 ng/ml

Instrument :
 ECD_D
 ClientSampleId :



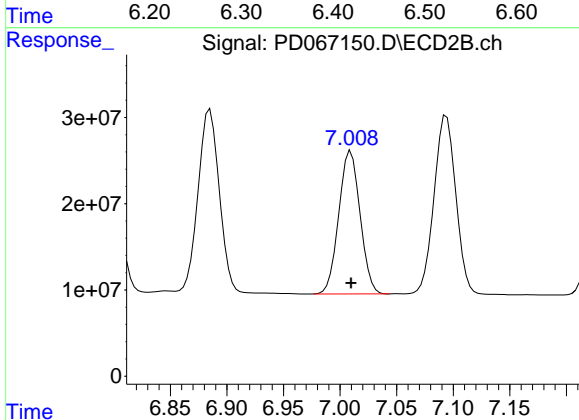
#17 4,4'-DDT

R.T.: 7.094 min
 Delta R.T.: 0.000 min
 Response: 276966623
 Conc: 46.41 ng/ml



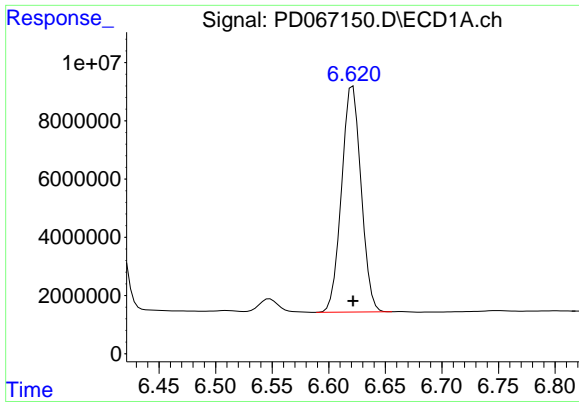
#18 Endrin aldehyde

R.T.: 6.410 min
 Delta R.T.: 0.000 min
 Response: 77254952
 Conc: 46.20 ng/ml



#18 Endrin aldehyde

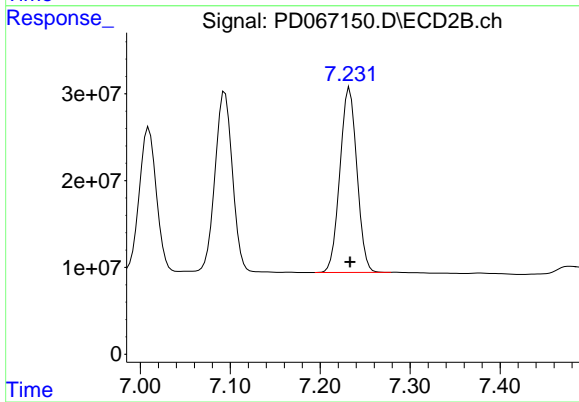
R.T.: 7.010 min
 Delta R.T.: 0.000 min
 Response: 217402366
 Conc: 46.36 ng/ml



#19 Endosulfan Sulfate

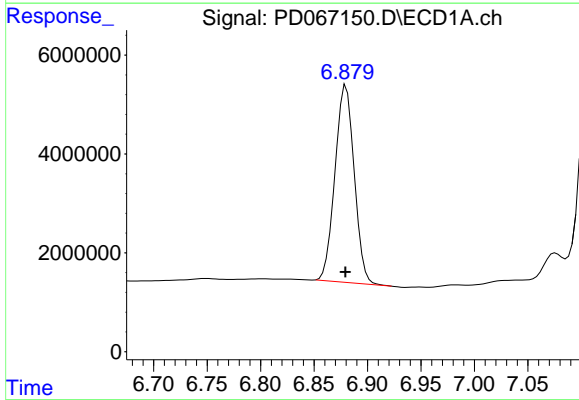
R.T.: 6.621 min
 Delta R.T.: 0.000 min
 Response: 93162813
 Conc: 45.94 ng/ml

Instrument :
 ECD_D
 ClientSampleId :



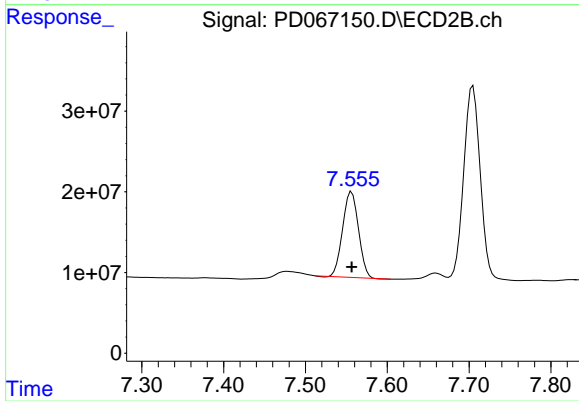
#19 Endosulfan Sulfate

R.T.: 7.233 min
 Delta R.T.: 0.000 min
 Response: 279581439
 Conc: 46.57 ng/ml



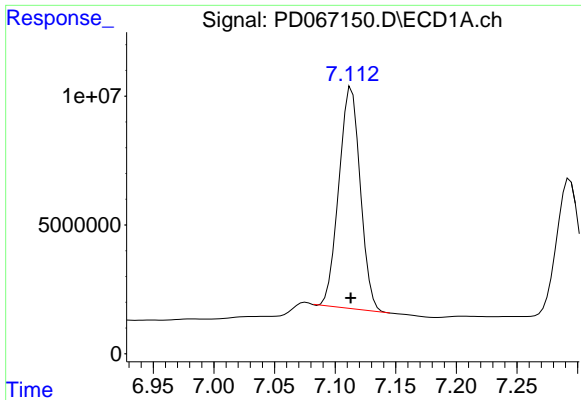
#20 Methoxychlor

R.T.: 6.880 min
 Delta R.T.: 0.000 min
 Response: 49895958
 Conc: 44.98 ng/ml



#20 Methoxychlor

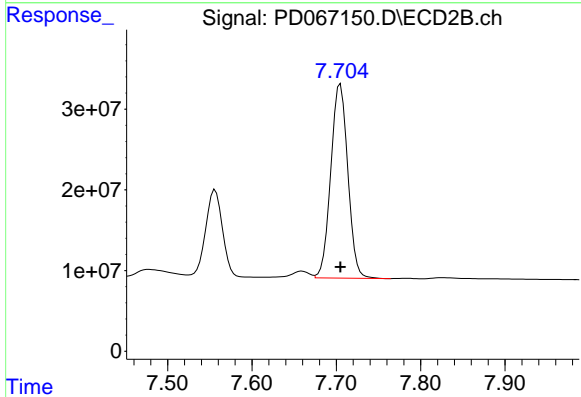
R.T.: 7.556 min
 Delta R.T.: 0.000 min
 Response: 141517356
 Conc: 43.94 ng/ml



#21 Endrin ketone

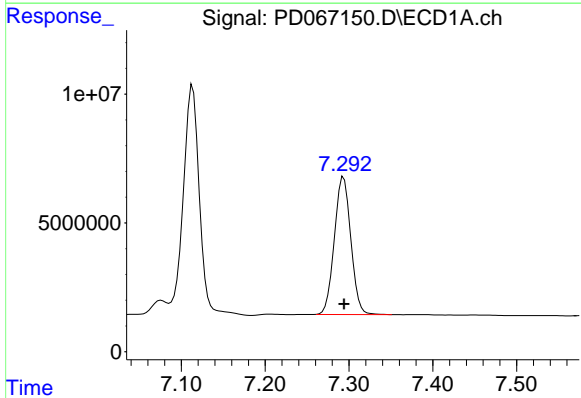
R.T.: 7.114 min
 Delta R.T.: 0.000 min
 Response: 105214906
 Conc: 46.44 ng/ml

Instrument :
 ECD_D
 ClientSampleId :



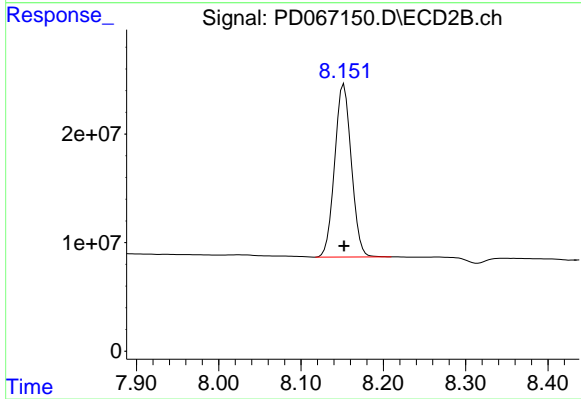
#21 Endrin ketone

R.T.: 7.705 min
 Delta R.T.: 0.000 min
 Response: 337971387
 Conc: 46.73 ng/ml



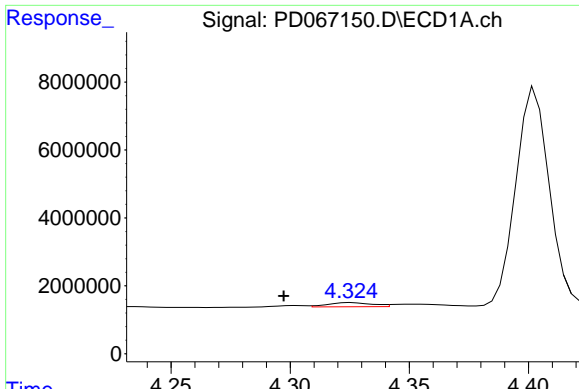
#22 Mirex

R.T.: 7.294 min
 Delta R.T.: 0.000 min
 Response: 72968600
 Conc: 45.49 ng/ml



#22 Mirex

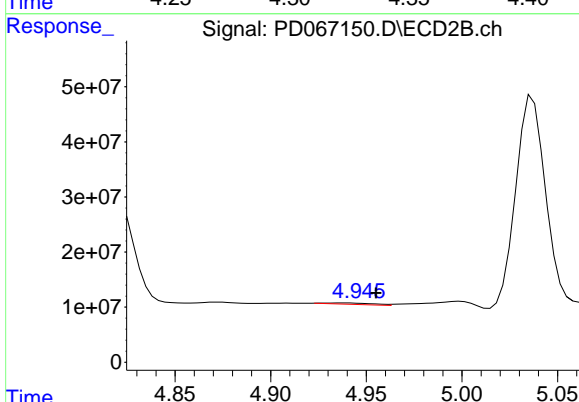
R.T.: 8.152 min
 Delta R.T.: 0.000 min
 Response: 224148581
 Conc: 45.76 ng/ml



#23 Chlordane-1

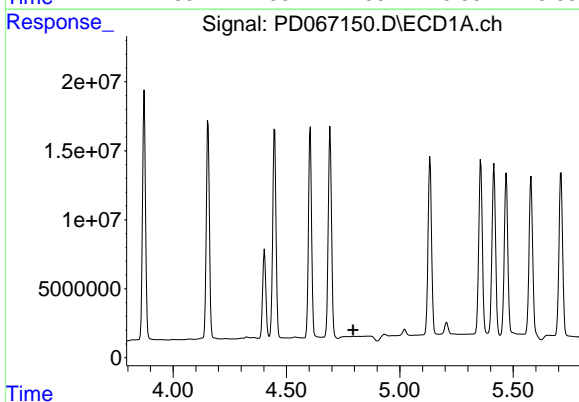
R.T.: 4.326 min
 Delta R.T.: 0.029 min
 Response: 1596287
 Conc: 19.71 ng/ml

Instrument :
 ECD_D
 ClientSampleId :



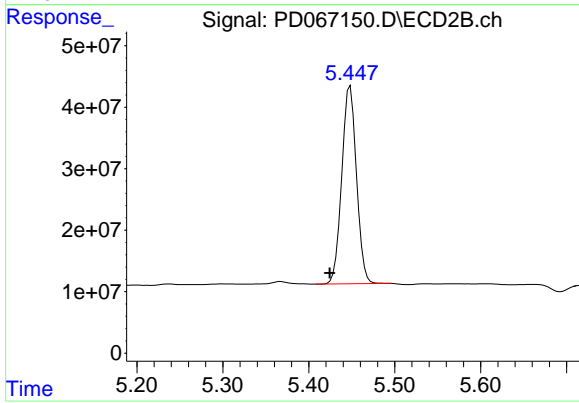
#23 Chlordane-1

R.T.: 4.939 min
 Delta R.T.: -0.016 min
 Response: 4251902
 Conc: 16.91 ng/ml



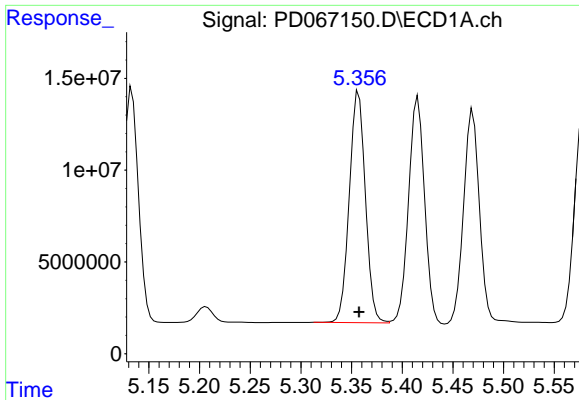
#24 Chlordane-2

R.T.: 0.000 min
 Exp R.T. : 4.794 min
 Response: 0
 Conc: N.D.



#24 Chlordane-2

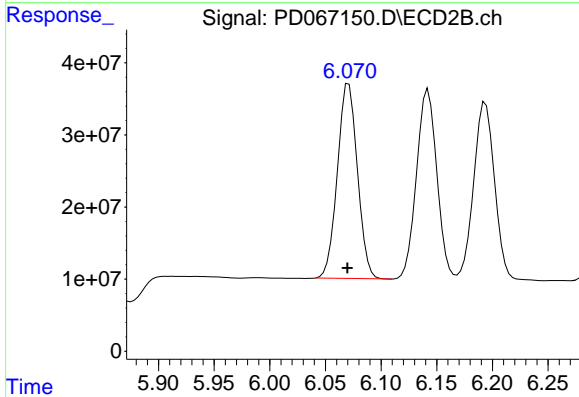
R.T.: 5.448 min
 Delta R.T.: 0.024 min
 Response: 383132474
 Conc: 1436.28 ng/ml



#25 Chlordane-3

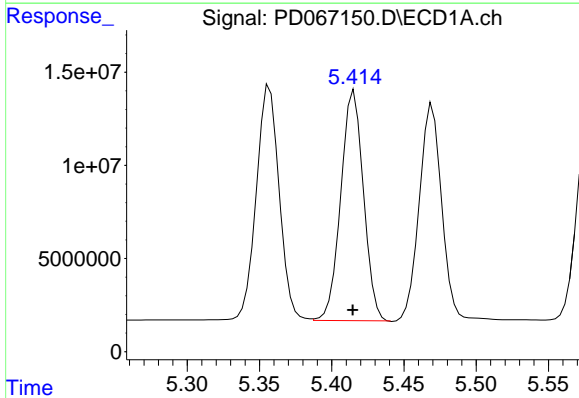
R.T.: 5.357 min
 Delta R.T.: 0.000 min
 Response: 139143684
 Conc: 505.49 ng/ml

Instrument :
 ECD_D
 ClientSampleId :



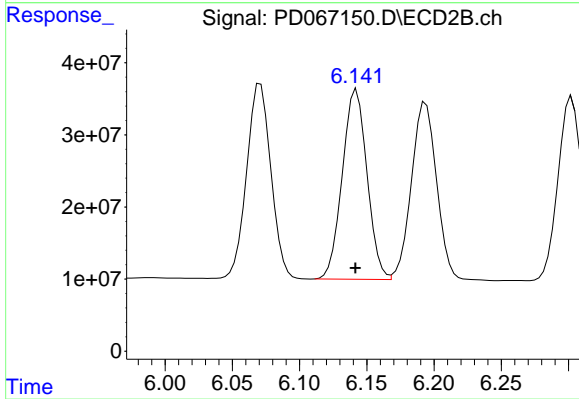
#25 Chlordane-3

R.T.: 6.071 min
 Delta R.T.: 0.001 min
 Response: 338317845
 Conc: 354.17 ng/ml



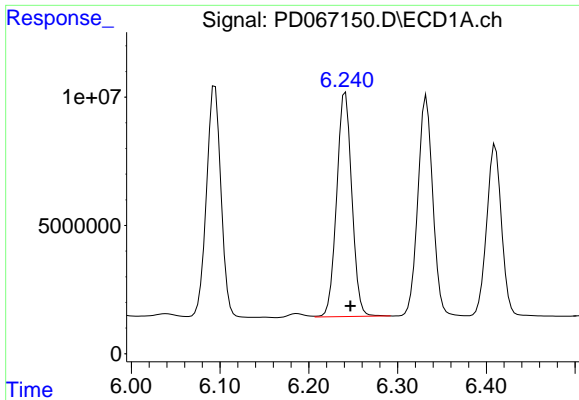
#26 Chlordane-4

R.T.: 5.415 min
 Delta R.T.: 0.000 min
 Response: 134756912
 Conc: 590.36 ng/ml



#26 Chlordane-4

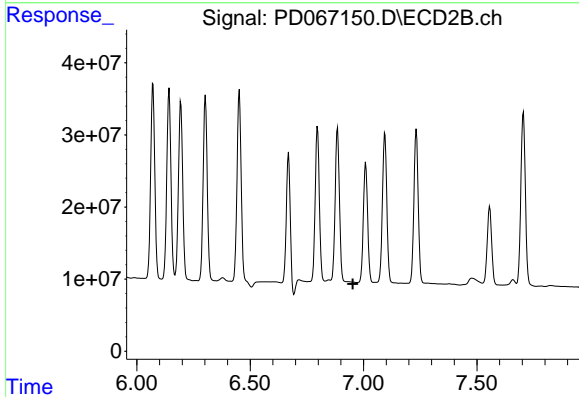
R.T.: 6.142 min
 Delta R.T.: 0.000 min
 Response: 336518823
 Conc: 302.72 ng/ml



#27 Chlordane-5

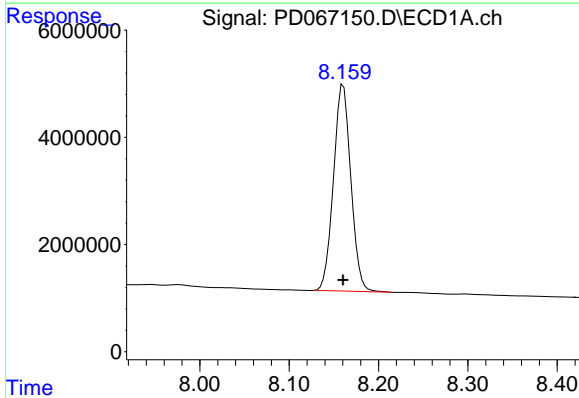
R.T.: 6.241 min
 Delta R.T.: -0.005 min
 Response: 103488093
 Conc: 1138.89 ng/m

Instrument :
 ECD_D
 ClientSampleId :



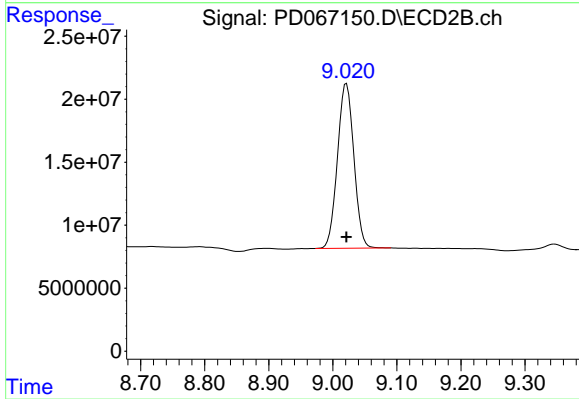
#27 Chlordane-5

R.T.: 0.000 min
 Exp R.T. : 6.952 min
 Response: 0
 Conc: N.D.



#28 Decachlorobiphenyl

R.T.: 8.161 min
 Delta R.T.: 0.000 min
 Response: 52013892
 Conc: 45.91 ng/ml



#28 Decachlorobiphenyl

R.T.: 9.021 min
 Delta R.T.: 0.000 min
 Response: 232487572
 Conc: 46.25 ng/ml