

Data Path : Z:\pestpcbsrv\HPCHEM1\ECD_D\Data\PD113021\
 Data File : PD067155.D
 Signal(s) : Signal #1: ECD1A.ch Signal #2: ECD2B.ch
 Acq On : 30 Nov 2021 12:35
 Operator : AR\AJ
 Sample : I.BLK
 Misc :
 ALS Vial : 2 Sample Multiplier: 1

Instrument :
 ECD_D
 ClientSampleId :

Integration File signal 1: autoint1.e
 Integration File signal 2: autoint2.e
 Quant Time: Dec 01 11:55:06 2021
 Quant Method : Z:\pestpcbsrv\HPCHEM1\ECD_D\Method\PD113021.M
 Quant Title : GC Extractables
 QLast Update : Tue Nov 30 17:33:19 2021
 Response via : Initial Calibration
 Integrator: ChemStation

Volume Inj. : 2 µl
 Signal #1 Phase : ZB-MR1 Signal #2 Phase: ZB-MR1
 Signal #1 Info : 30M x 0.32mm x0.2 Signal #2 Info : 30M x 0.32mm x 0.50µm

	Compound	RT#1	RT#2	Resp#1	Resp#2	ng/ml	ng/ml

System Monitoring Compounds							
1)	SA Tetrachlo...	3.436	3.967	39341509	140.9E6	19.039	19.410
28)	SA Decachlor...	8.161	9.022	22986672	100.9E6	20.288	20.068
Target Compounds							
4)	MA Heptachlor	0.000	5.130	0	1867301	N.D.	0.207 #
5)	MB Aldrin	0.000	5.445	0	245399	N.D.	0.029 #
6)	B beta-BHC	4.411	4.841f	1545520	1631316	1.132	0.370 #
7)	B delta-BHC	0.000	5.056f	0	3627432	N.D.	0.395 #
8)	B Heptachlo...	0.000	5.835	0	50090497	N.D.	7.144 #
14)	MA Endrin	5.979	6.654	1727996	38667883	0.757	6.887 #
15)	B Endosulfa...	0.000	6.896	0	1283192	N.D.	0.214 #
24)	Chlordane-2	0.000	5.445f	0	245399	N.D.	0.920 #

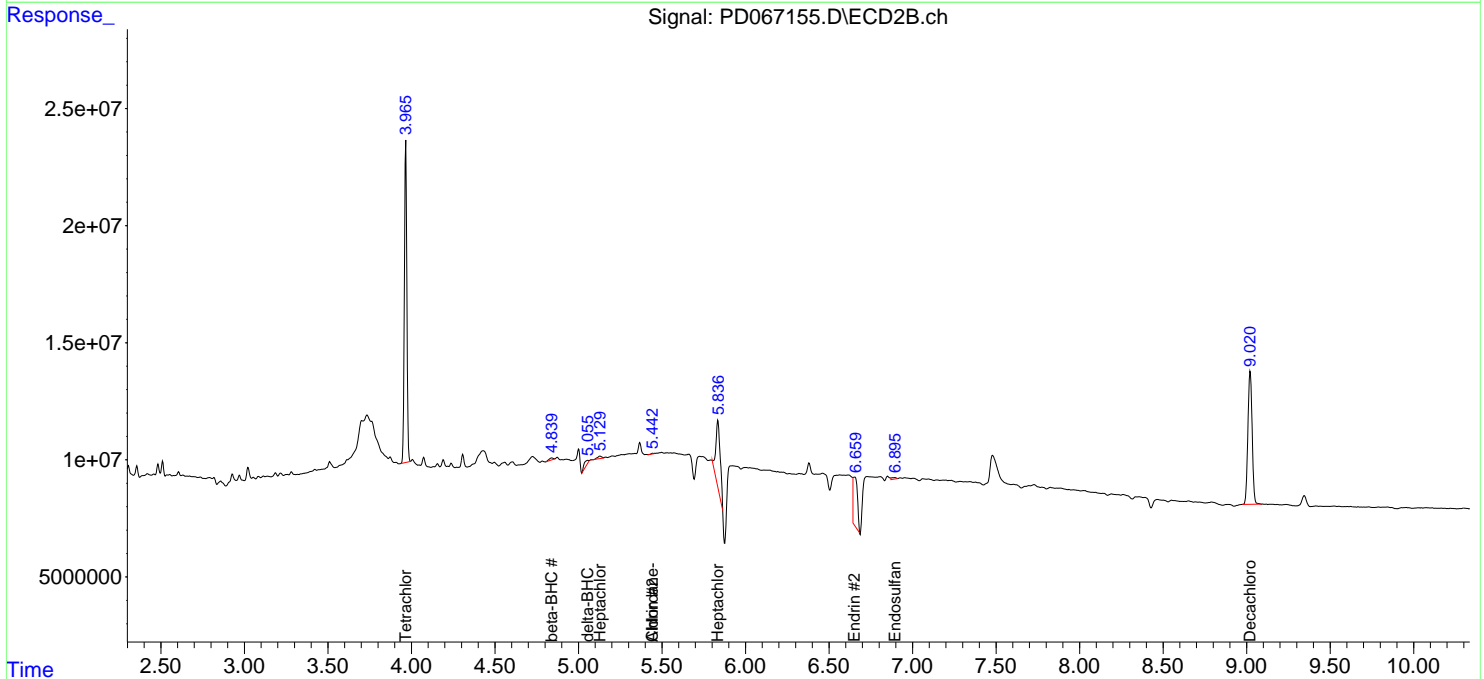
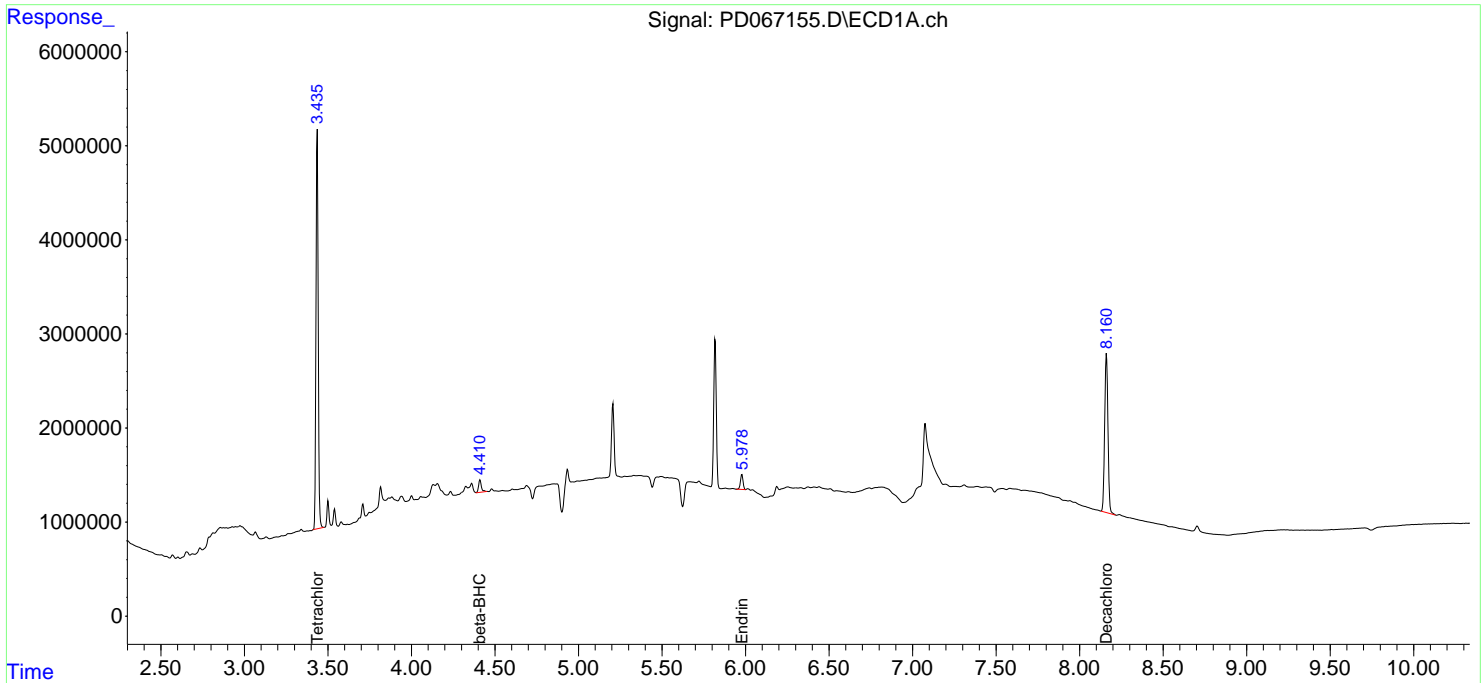
(f)=RT Delta > 1/2 Window (#)=Amounts differ by > 25% (m)=manual int.

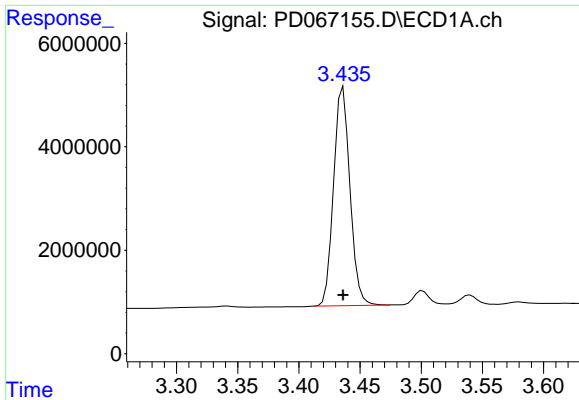
Data Path : Z:\pestpcbsrv\HPCHEM1\ECD_D\Data\PD113021\
 Data File : PD067155.D
 Signal(s) : Signal #1: ECD1A.ch Signal #2: ECD2B.ch
 Acq On : 30 Nov 2021 12:35
 Operator : AR\AJ
 Sample : I.BLK
 Misc :
 ALS Vial : 2 Sample Multiplier: 1

Instrument :
 ECD_D
 ClientSampleId :

Integration File signal 1: autoint1.e
 Integration File signal 2: autoint2.e
 Quant Time: Dec 01 11:55:06 2021
 Quant Method : Z:\pestpcbsrv\HPCHEM1\ECD_D\Method\PD113021.M
 Quant Title : GC Extractables
 QLast Update : Tue Nov 30 17:33:19 2021
 Response via : Initial Calibration
 Integrator: ChemStation

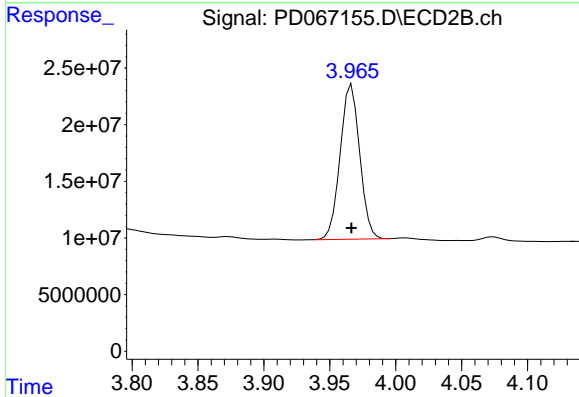
Volume Inj. : 2 µl
 Signal #1 Phase : ZB-MR2 Signal #2 Phase: ZB-MR1
 Signal #1 Info : 30M x 0.32mm x 0.2 Signal #2 Info : 30M x 0.32mm x 0.50µm



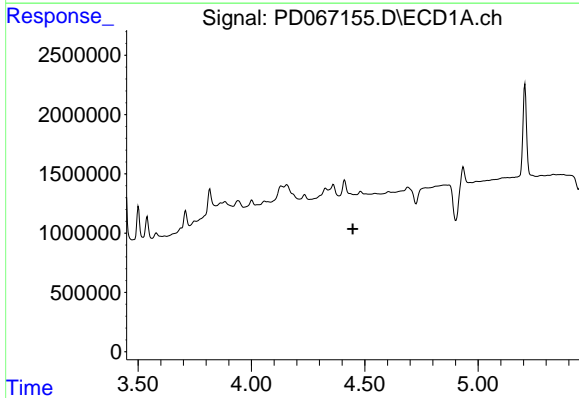


#1 Tetrachloro-m-xylene
 R.T.: 3.436 min
 Delta R.T.: 0.000 min
 Response: 39341509
 Conc: 19.04 ng/ml

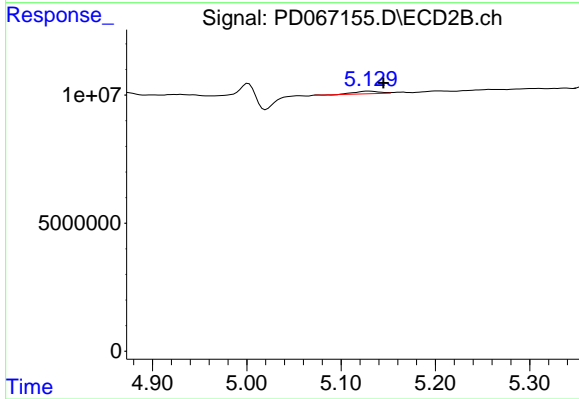
Instrument :
 ECD_D
 ClientSampleId :



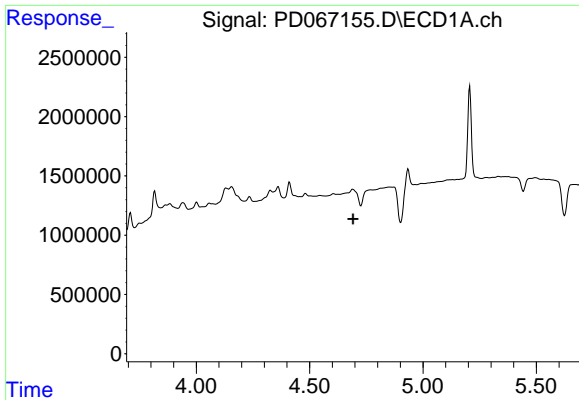
#1 Tetrachloro-m-xylene
 R.T.: 3.967 min
 Delta R.T.: 0.000 min
 Response: 140884085
 Conc: 19.41 ng/ml



#4 Heptachlor
 R.T.: 0.000 min
 Exp R.T. : 4.448 min
 Response: 0
 Conc: N.D.

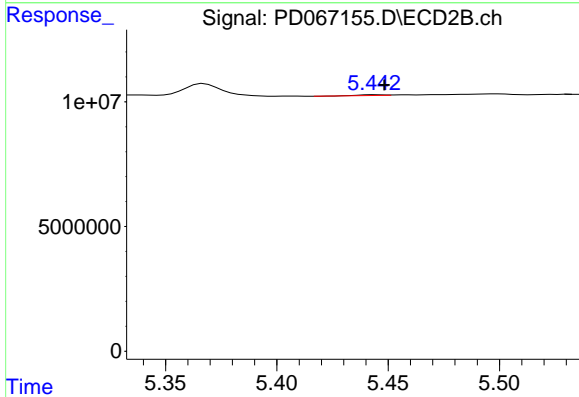


#4 Heptachlor
 R.T.: 5.130 min
 Delta R.T.: -0.015 min
 Response: 1867301
 Conc: 0.21 ng/ml

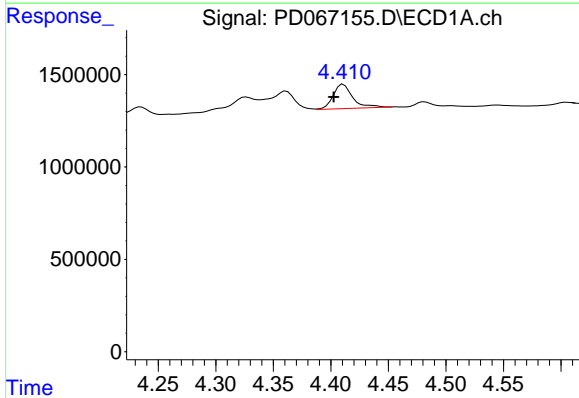


#5 Aldrin
 R.T.: 0.000 min
 Exp R.T.: 4.692 min
 Response: 0
 Conc: N.D.

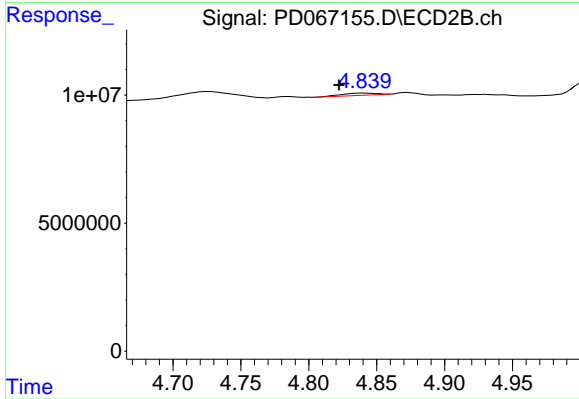
Instrument :
 ECD_D
 ClientSampleId :



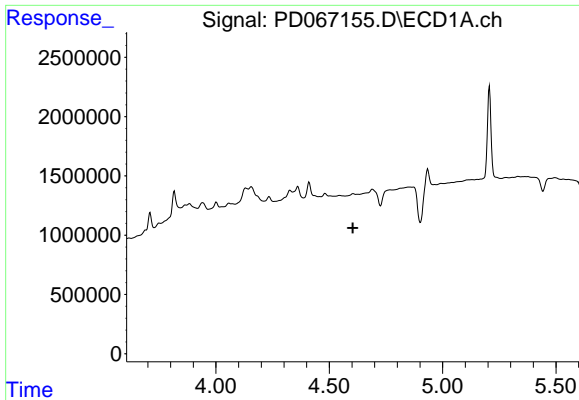
#5 Aldrin
 R.T.: 5.445 min
 Delta R.T.: -0.004 min
 Response: 245399
 Conc: 0.03 ng/ml



#6 beta-BHC
 R.T.: 4.411 min
 Delta R.T.: 0.008 min
 Response: 1545520
 Conc: 1.13 ng/ml



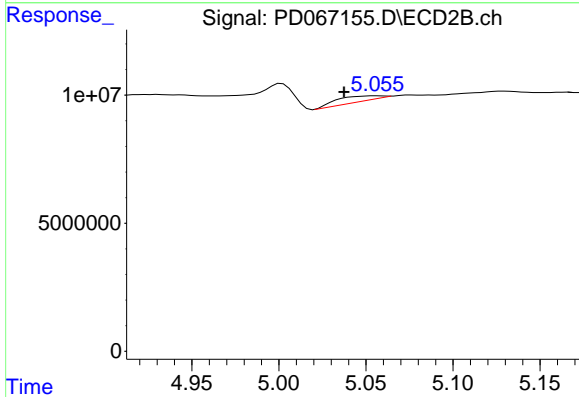
#6 beta-BHC
 R.T.: 4.841 min
 Delta R.T.: 0.018 min
 Response: 1631316
 Conc: 0.37 ng/ml



#7 delta-BHC

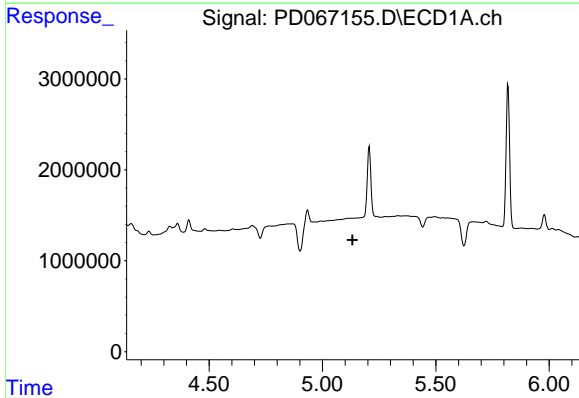
R.T.: 0.000 min
 Exp R.T.: 4.604 min
 Response: 0
 Conc: N.D.

Instrument :
 ECD_D
 ClientSampleId :



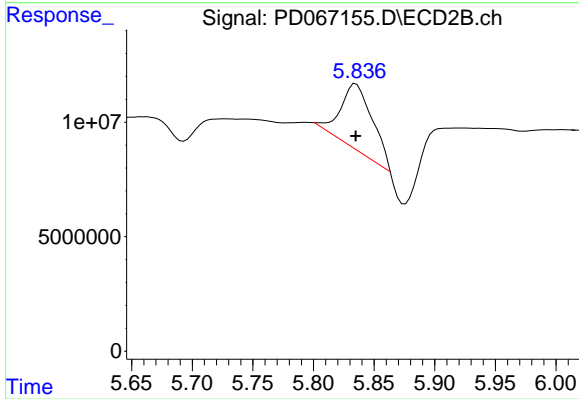
#7 delta-BHC

R.T.: 5.056 min
 Delta R.T.: 0.019 min
 Response: 3627432
 Conc: 0.40 ng/ml



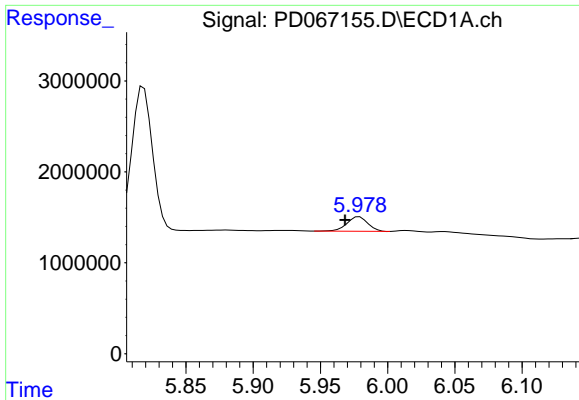
#8 Heptachlor epoxide

R.T.: 0.000 min
 Exp R.T.: 5.133 min
 Response: 0
 Conc: N.D.



#8 Heptachlor epoxide

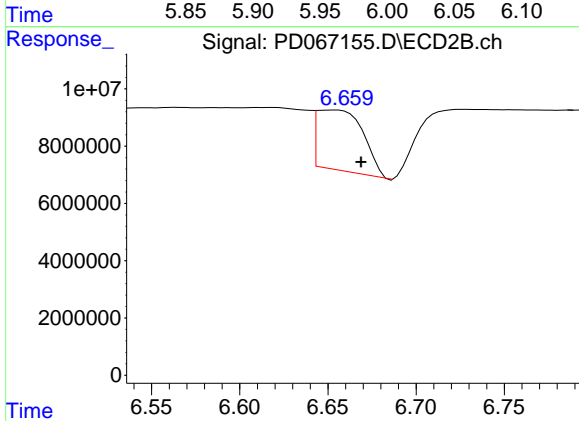
R.T.: 5.835 min
 Delta R.T.: 0.000 min
 Response: 50090497
 Conc: 7.14 ng/ml



#14 Endrin

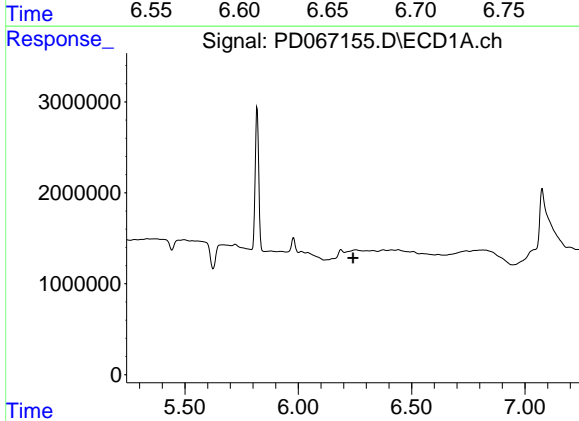
R.T.: 5.979 min
 Delta R.T.: 0.011 min
 Response: 1727996
 Conc: 0.76 ng/ml

Instrument :
 ECD_D
 ClientSampleId :



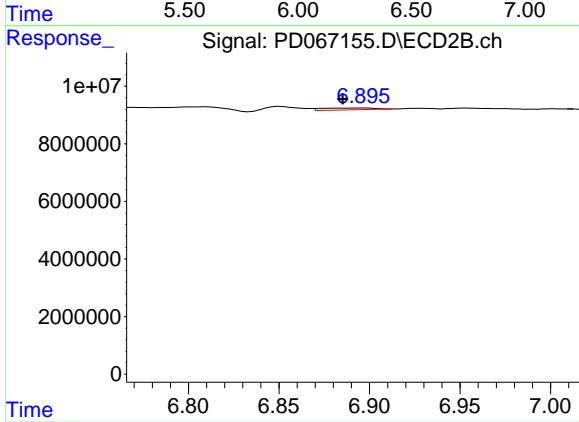
#14 Endrin

R.T.: 6.654 min
 Delta R.T.: -0.015 min
 Response: 38667883
 Conc: 6.89 ng/ml



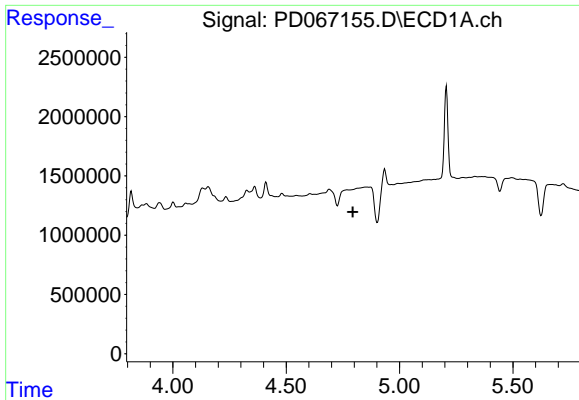
#15 Endosulfan II

R.T.: 0.000 min
 Exp R.T. : 6.241 min
 Response: 0
 Conc: N.D.



#15 Endosulfan II

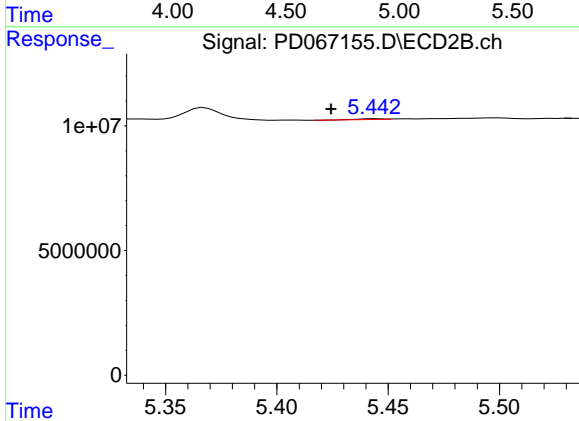
R.T.: 6.896 min
 Delta R.T.: 0.011 min
 Response: 1283192
 Conc: 0.21 ng/ml



#24 Chlordane-2

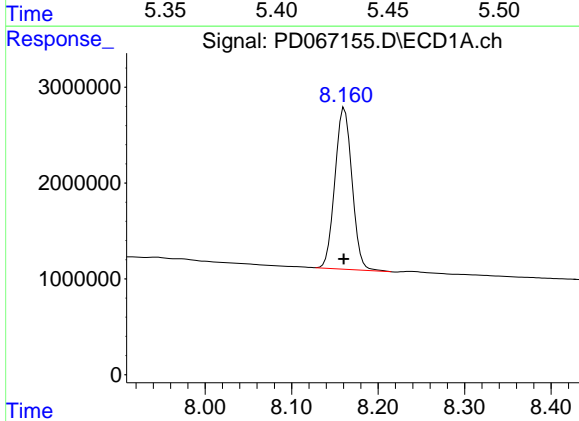
R.T.: 0.000 min
 Exp R.T.: 4.794 min
 Response: 0
 Conc: N.D.

Instrument :
 ECD_D
 ClientSampleId :



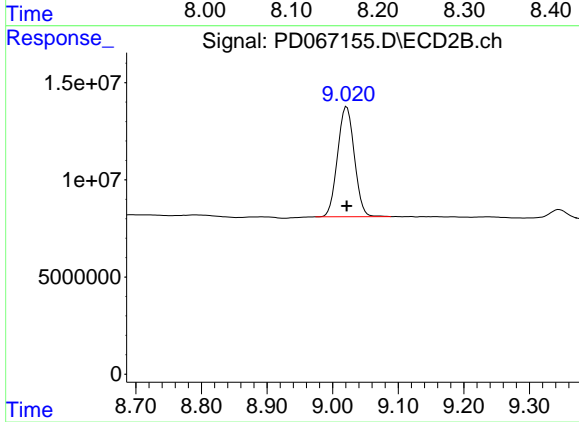
#24 Chlordane-2

R.T.: 5.445 min
 Delta R.T.: 0.020 min
 Response: 245399
 Conc: 0.92 ng/ml



#28 Decachlorobiphenyl

R.T.: 8.161 min
 Delta R.T.: 0.000 min
 Response: 22986672
 Conc: 20.29 ng/ml



#28 Decachlorobiphenyl

R.T.: 9.022 min
 Delta R.T.: 0.000 min
 Response: 100885698
 Conc: 20.07 ng/ml