

Data Path : Z:\pestpcbsrv\HPCHEM1\ECD_D\Data\PD120120\
 Data File : PD060505.D
 Signal(s) : Signal #1: ECD1A.ch Signal #2: ECD2B.ch
 Acq On : 01 Dec 2020 18:39
 Operator : DD\AJ
 Sample : L4862-13
 Misc :
 ALS Vial : 37 Sample Multiplier: 1

Instrument :
 ECD_D
 ClientSampleId :
 C0B02

Integration File signal 1: autoint1.e
 Integration File signal 2: autoint2.e
 Quant Time: Dec 02 00:49:50 2020
 Quant Method : Z:\pestpcbsrv\HPCHEM1\ECD_D\Method\PD112720CLP.M
 Quant Title : GC Extractables
 QLast Update : Sat Nov 28 01:50:00 2020
 Response via : Initial Calibration
 Integrator: ChemStation

Volume Inj. : 1 µl
 Signal #1 Phase : ZB-MR2 Signal #2 Phase: ZB-MR1
 Signal #1 Info : 30M x 0.32mm x0.2 Signal #2 Info : 30M x 0.32mm x 0.50µm

Compound	RT#1	RT#2	Resp#1	Resp#2	ng/ml	ng/ml

System Monitoring Compounds						
1) SA Tetrachlo...	3.503	4.023	16484452	52670322	14.476	14.326
27) SA Decachlor...	8.293	9.109	32927828	64830720	24.315	22.368
Target Compounds						
2) A alpha-BHC	3.901f	4.449f	112945	6108198	<MDL	1.120 #
3) MA gamma-BHC...	0.000	4.696	0	678554	N.D.	0.137
6) B beta-BHC	0.000	4.851	0	738538	N.D.	0.339
7) B delta-BHC	0.000	5.054f	0	422931	N.D.	0.109
8) B Heptachlo...	5.231	5.860f	562360	7773947	0.394	2.080 #
9) A Endosulfan I	5.596	6.297f	1571909	606490	1.142	0.155 #
10) B trans-Chl...	5.462	6.136	950343	5135012	0.634	1.212 #
11) B cis-Chlor...	5.521	6.213	1484513	6038489	1.007	1.465 #
12) B 4,4'-DDE	0.000	6.365	0	2265316	N.D.	0.570
14) MA Endrin	6.141f	6.760	1069900	131292	0.860	<MDL #
15) B Endosulfa...	6.298f	6.951	1314203	4998131	1.106	1.564 #
16) A 4,4'-DDD	6.207	6.860	32801	2616913	<MDL	0.790 #
17) MA 4,4'-DDT	6.444	7.129	1092398	940068	0.894	0.286 #
18) B Endrin al...	0.000	7.129f	0	940068	N.D.	0.348
19) B Endosulfa...	6.748	7.289	1947855	978057	1.719	0.311 #
20) A Methoxychlor	6.980	7.672f	700844	1214512	1.173	0.741 #
21) B Endrin ke...	0.000	7.754	0	2068515	N.D.	0.614
22) Toxaphene-1	0.000	6.418	0	784687	N.D.	29.436
23) Toxaphene-2	0.000	6.760	0	131292	N.D.	4.044
24) Toxaphene-3	6.298	7.129	1314203	940068	89.009	19.526 #
25) Toxaphene-4	6.444	7.129	1092398	940068	32.623	7.162 #
26) Toxaphene-5	0.000	7.672	0	1214512	N.D.	20.807

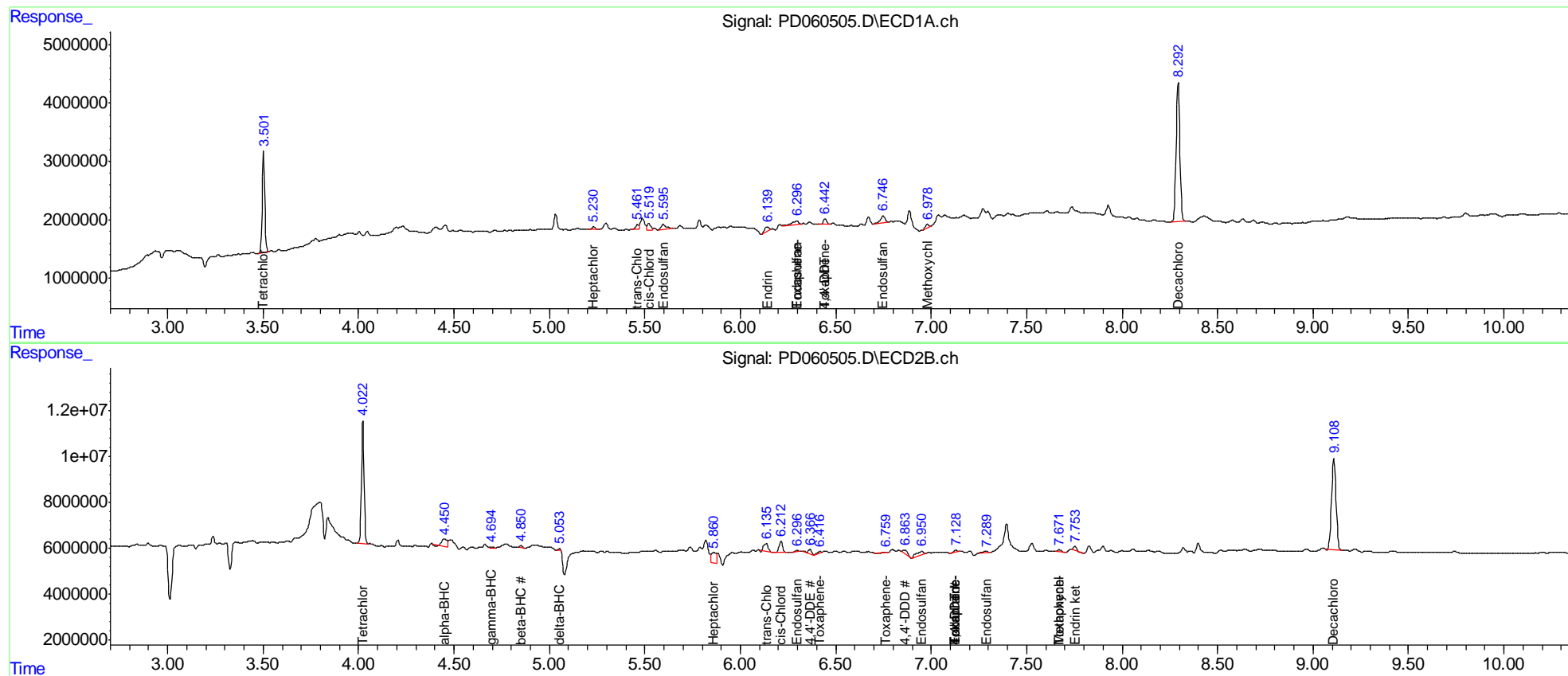
(f)=RT Delta > 1/2 Window (#)=Amounts differ by > 25% (m)=manual int.

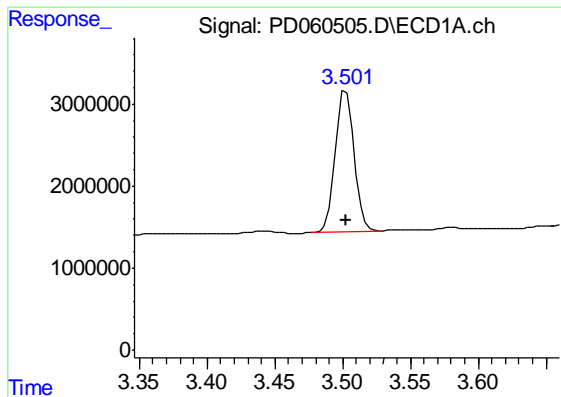
Data Path : Z:\pestpcbsrv\HPCHEM1\ECD_D\Data\PD120120\
 Data File : PD060505.D
 Signal(s) : Signal #1: ECD1A.ch Signal #2: ECD2B.ch
 Acq On : 01 Dec 2020 18:39
 Operator : DD\AJ
 Sample : L4862-13
 Misc :
 ALS Vial : 37 Sample Multiplier: 1

Instrument :
 ECD_D
 Client Sampled :
 C0B02

Integration File signal 1: autoint1.e
 Integration File signal 2: autoint2.e
 Quant Time: Dec 02 00:49:50 2020
 Quant Method : Z:\pestpcbsrv\HPCHEM1\ECD_D\Method\PD112720CLP.M
 Quant Title : GC Extractables
 QLast Update : Sat Nov 28 01:50:00 2020
 Response via : Initial Calibration
 Integrator: ChemStation

Volume Inj. : 1 µl
 Signal #1 Phase : ZB-MR2 Signal #2 Phase: ZB-MR1
 Signal #1 Info : 30M x 0.32mm x0.2 Signal #2 Info : 30M x 0.32mm x 0.50µm

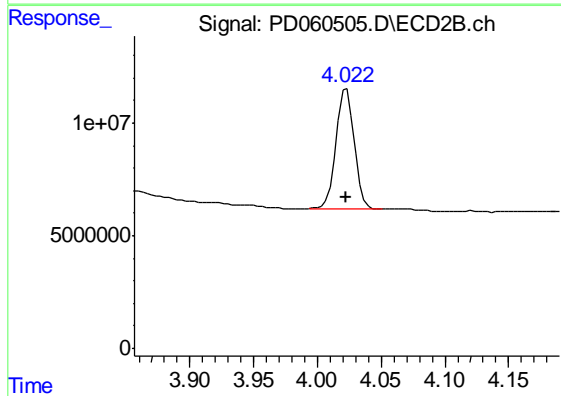




#1 Tetrachloro-m-xylene

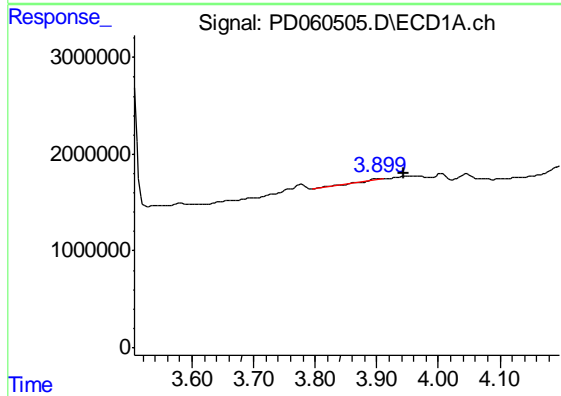
R.T.: 3.503 min
 Delta R.T.: 0.000 min
 Response: 16484452
 Conc: 14.48 ng/ml

Instrument :
 ECD_D
 ClientSampleId :
 C0B02



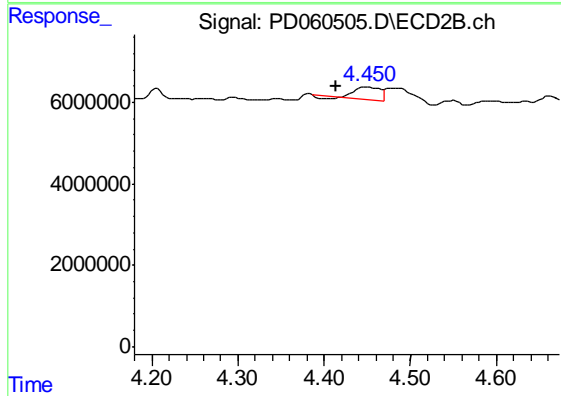
#1 Tetrachloro-m-xylene

R.T.: 4.023 min
 Delta R.T.: 0.000 min
 Response: 52670322
 Conc: 14.33 ng/ml



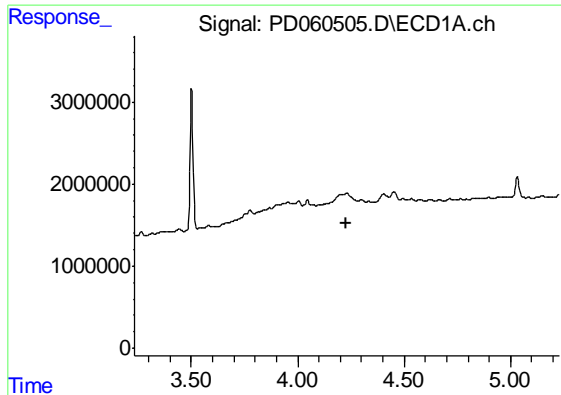
#2 alpha-BHC

R.T.: 3.901 min
 Delta R.T.: -0.043 min
 Response: 112945
 Conc: N.D.



#2 alpha-BHC

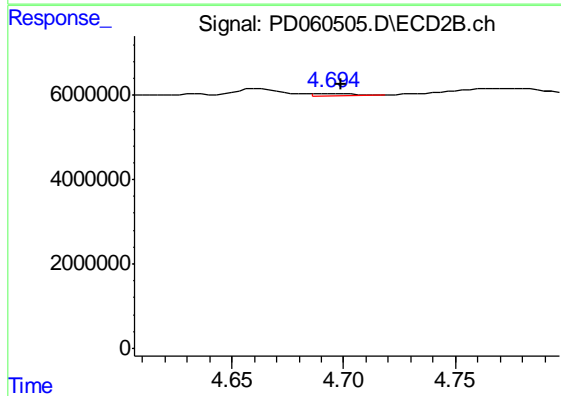
R.T.: 4.449 min
 Delta R.T.: 0.036 min
 Response: 6108198
 Conc: 1.12 ng/ml



#3 gamma-BHC (Lindane)

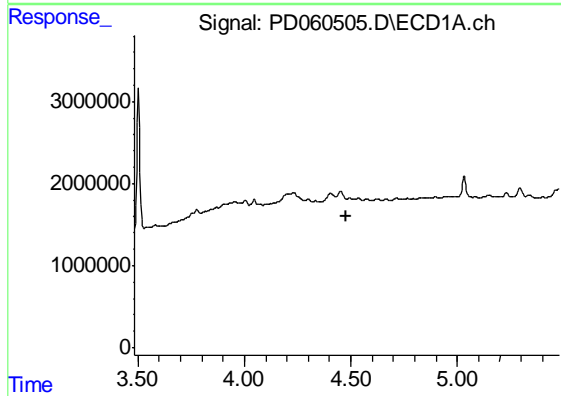
R.T.: 0.000 min
 Exp R.T. : 4.230 min
 Response: 0
 Conc: N.D.

Instrument :
 ECD_D
 ClientSampled :
 C0B02



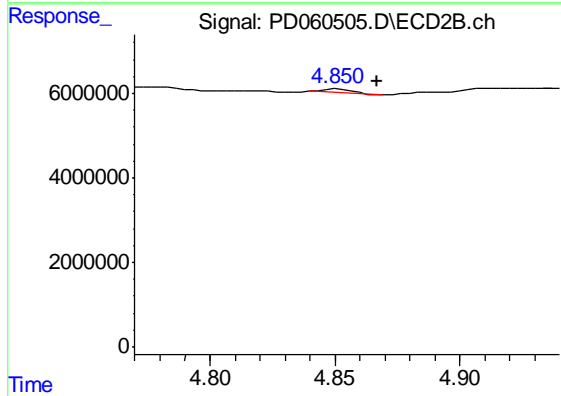
#3 gamma-BHC (Lindane)

R.T.: 4.696 min
 Delta R.T.: -0.003 min
 Response: 678554
 Conc: 0.14 ng/ml



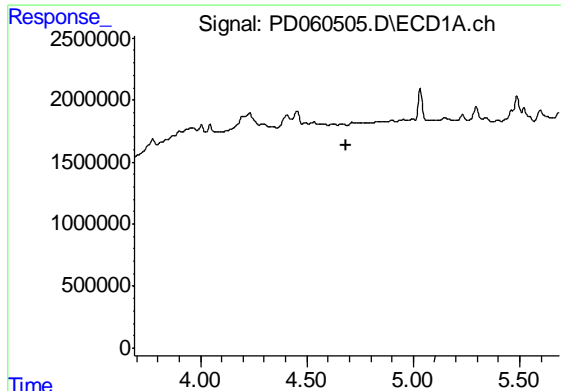
#6 beta-BHC

R.T.: 0.000 min
 Exp R.T. : 4.480 min
 Response: 0
 Conc: N.D.



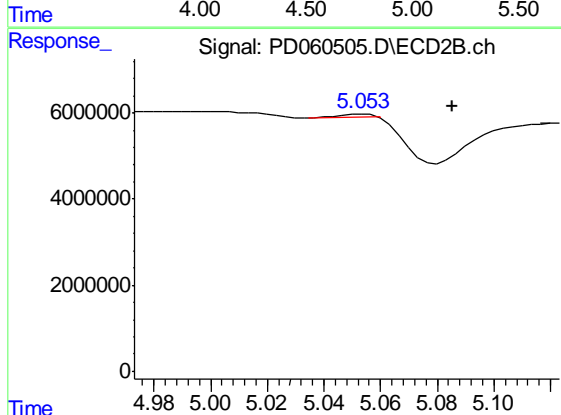
#6 beta-BHC

R.T.: 4.851 min
 Delta R.T.: -0.016 min
 Response: 738538
 Conc: 0.34 ng/ml

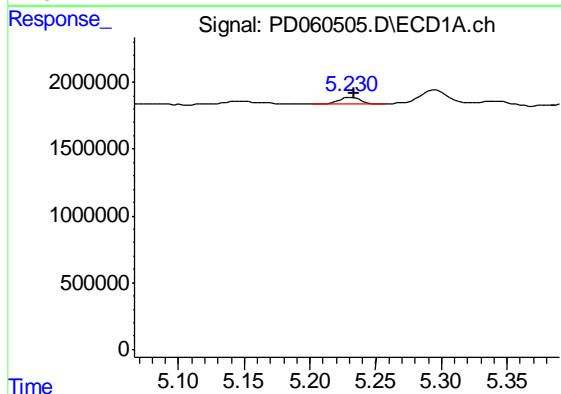


#7 delta-BHC
 R.T.: 0.000 min
 Exp R.T. : 4.688 min
 Response: 0
 Conc: N.D.

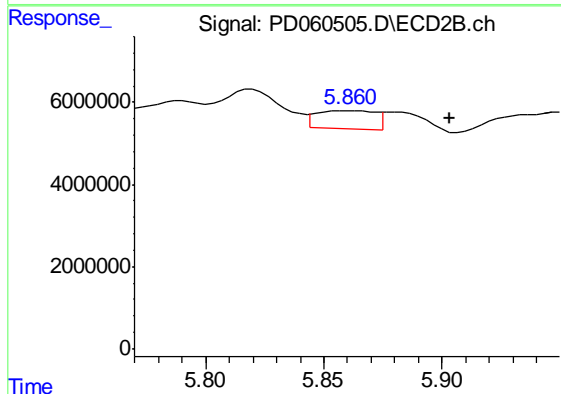
Instrument :
 ECD_D
 ClientSampleId :
 C0B02



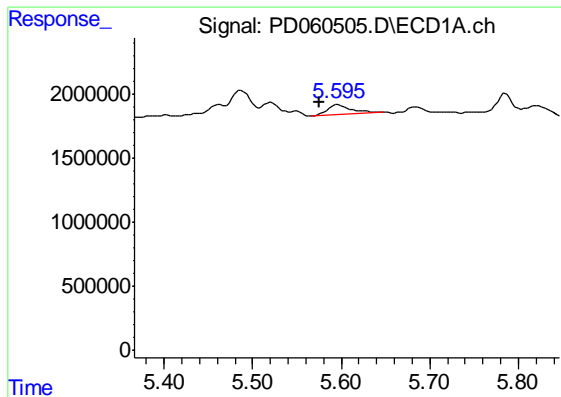
#7 delta-BHC
 R.T.: 5.054 min
 Delta R.T.: -0.031 min
 Response: 422931
 Conc: 0.11 ng/ml



#8 Heptachlor epoxide
 R.T.: 5.231 min
 Delta R.T.: -0.002 min
 Response: 562360
 Conc: 0.39 ng/ml



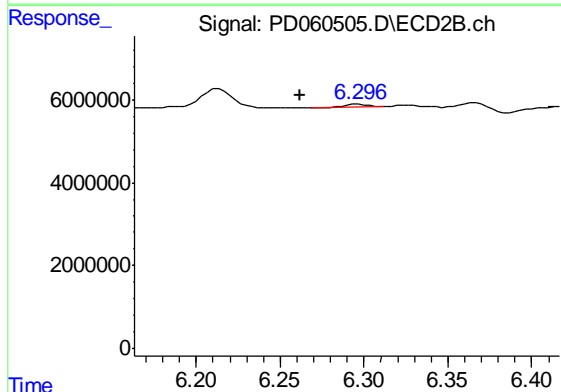
#8 Heptachlor epoxide
 R.T.: 5.860 min
 Delta R.T.: -0.043 min
 Response: 7773947
 Conc: 2.08 ng/ml



#9 Endosulfan I

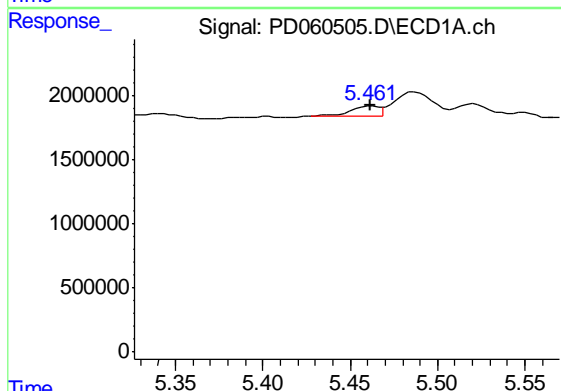
R.T.: 5.596 min
 Delta R.T.: 0.021 min
 Response: 1571909
 Conc: 1.14 ng/ml

Instrument :
 ECD_D
 ClientSampleId :
 C0B02



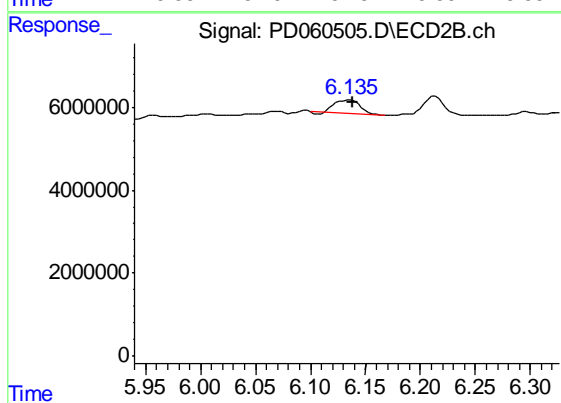
#9 Endosulfan I

R.T.: 6.297 min
 Delta R.T.: 0.035 min
 Response: 606490
 Conc: 0.16 ng/ml



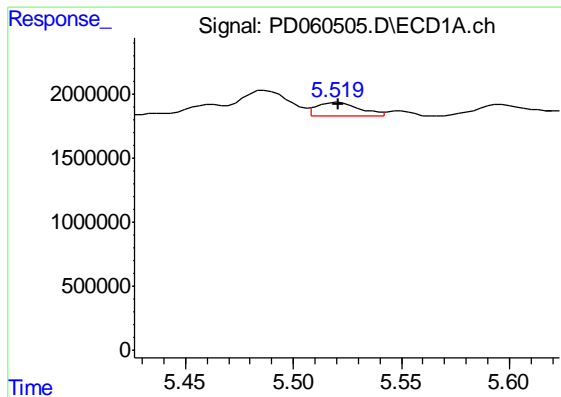
#10 trans-Chlordane

R.T.: 5.462 min
 Delta R.T.: 0.000 min
 Response: 950343
 Conc: 0.63 ng/ml



#10 trans-Chlordane

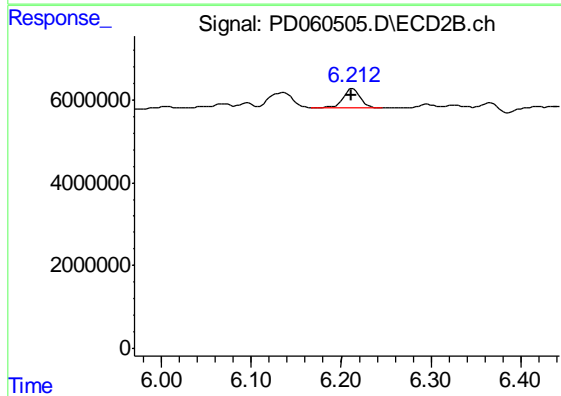
R.T.: 6.136 min
 Delta R.T.: -0.002 min
 Response: 5135012
 Conc: 1.21 ng/ml



#11 cis-Chlordane

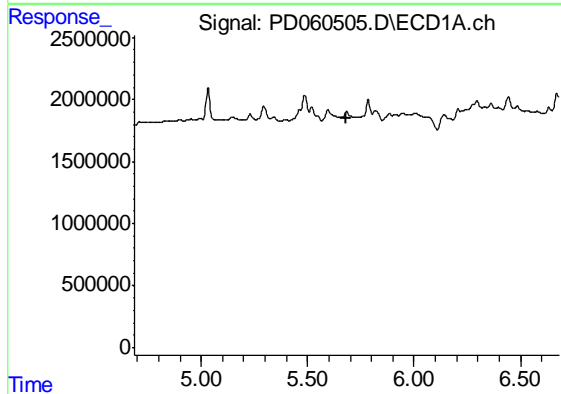
R.T.: 5.521 min
 Delta R.T.: 0.000 min
 Response: 1484513
 Conc: 1.01 ng/ml

Instrument :
 ECD_D
 ClientSampled :
 C0B02



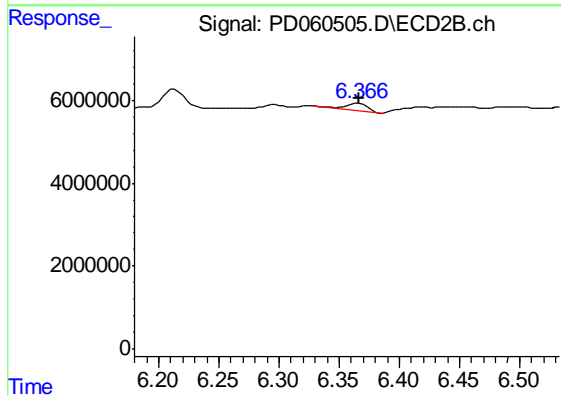
#11 cis-Chlordane

R.T.: 6.213 min
 Delta R.T.: 0.002 min
 Response: 6038489
 Conc: 1.46 ng/ml



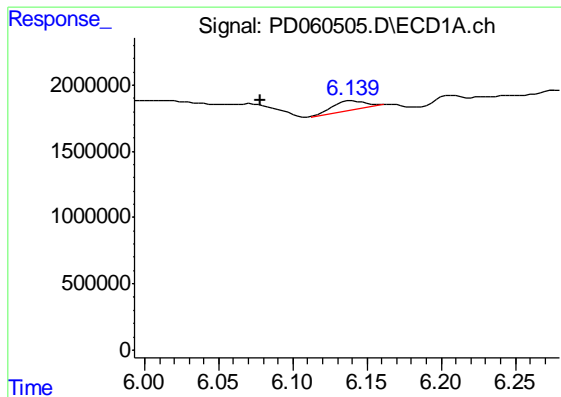
#12 4,4'-DDE

R.T.: 0.000 min
 Exp R.T. : 5.685 min
 Response: 0
 Conc: N.D.



#12 4,4'-DDE

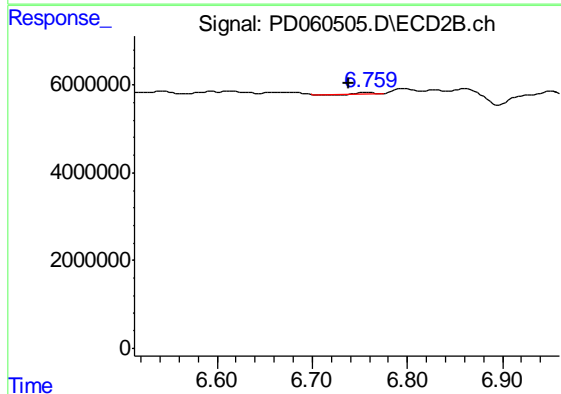
R.T.: 6.365 min
 Delta R.T.: -0.001 min
 Response: 2265316
 Conc: 0.57 ng/ml



#14 Endrin

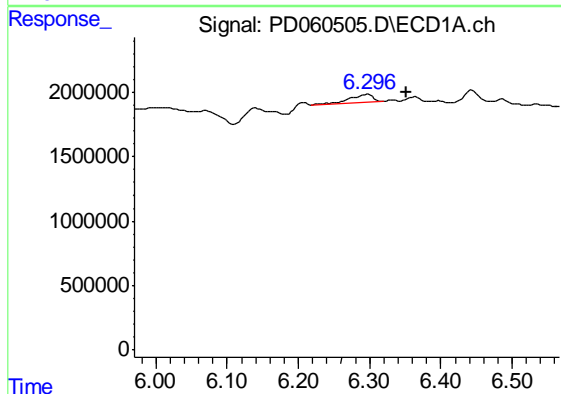
R.T.: 6.141 min
 Delta R.T.: 0.062 min
 Response: 1069900
 Conc: 0.86 ng/ml

Instrument :
 ECD_D
 ClientSampleId :
 C0B02



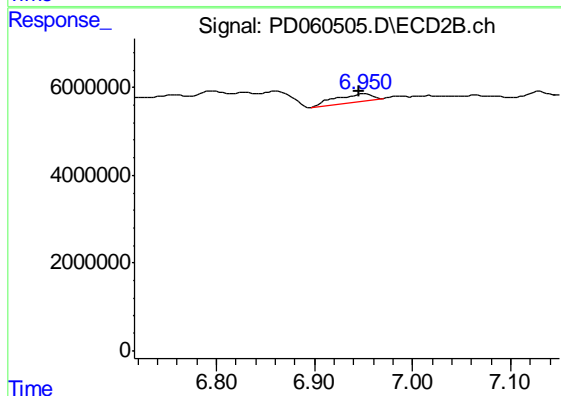
#14 Endrin

R.T.: 6.760 min
 Delta R.T.: 0.022 min
 Response: 131292
 Conc: N.D.



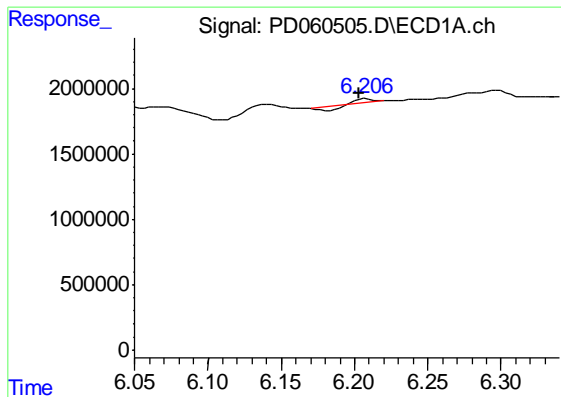
#15 Endosulfan II

R.T.: 6.298 min
 Delta R.T.: -0.055 min
 Response: 1314203
 Conc: 1.11 ng/ml



#15 Endosulfan II

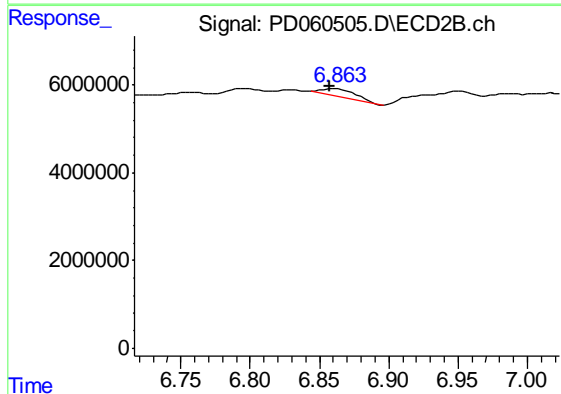
R.T.: 6.951 min
 Delta R.T.: 0.006 min
 Response: 4998131
 Conc: 1.56 ng/ml



#16 4,4'-DDD

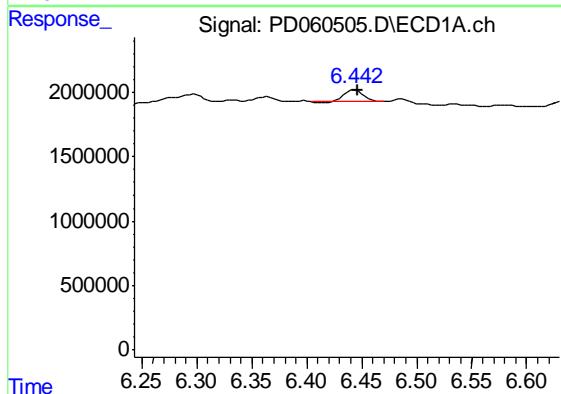
R.T.: 6.207 min
 Delta R.T.: 0.005 min
 Response: 32801
 Conc: N.D.

Instrument :
 ECD_D
 ClientSampleId :
 C0B02



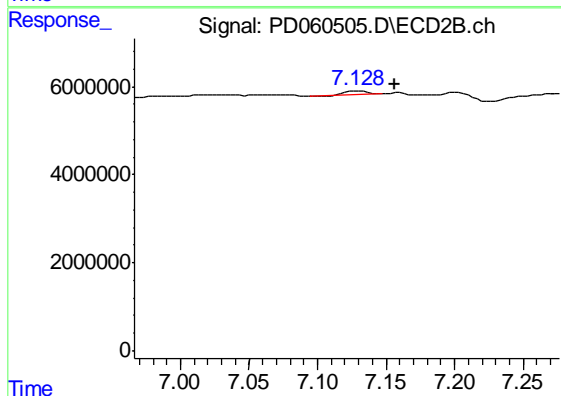
#16 4,4'-DDD

R.T.: 6.860 min
 Delta R.T.: 0.003 min
 Response: 2616913
 Conc: 0.79 ng/ml



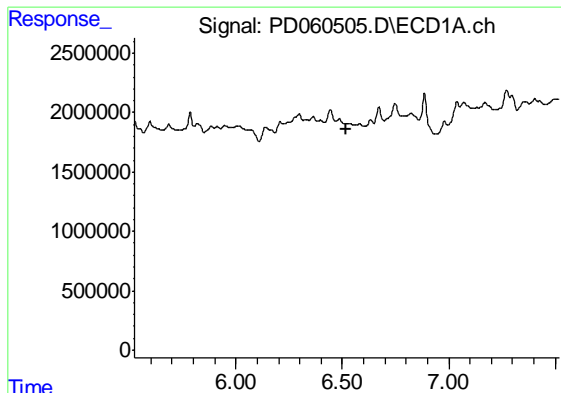
#17 4,4'-DDT

R.T.: 6.444 min
 Delta R.T.: -0.003 min
 Response: 1092398
 Conc: 0.89 ng/ml



#17 4,4'-DDT

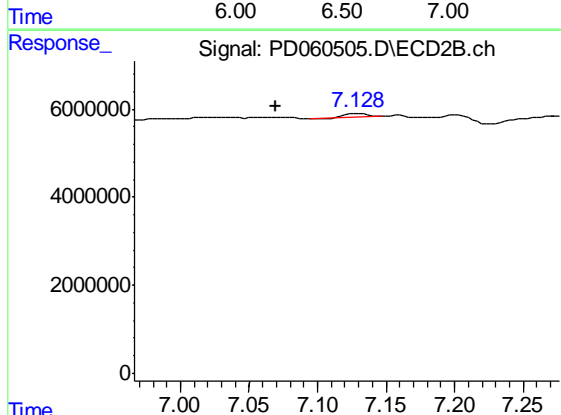
R.T.: 7.129 min
 Delta R.T.: -0.027 min
 Response: 940068
 Conc: 0.29 ng/ml



#18 Endrin aldehyde

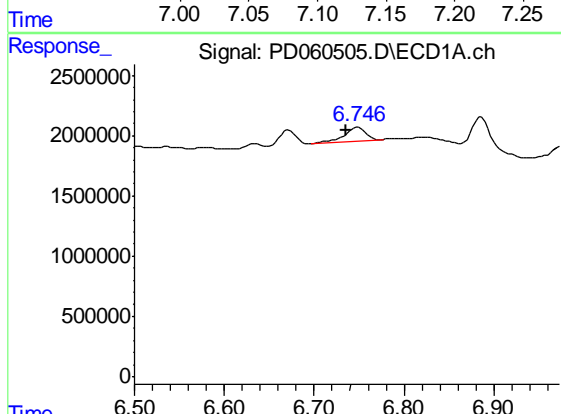
R.T.: 0.000 min
 Exp R.T. : 6.521 min
 Response: 0
 Conc: N.D.

Instrument :
 ECD_D
 ClientSampleId :
 C0B02



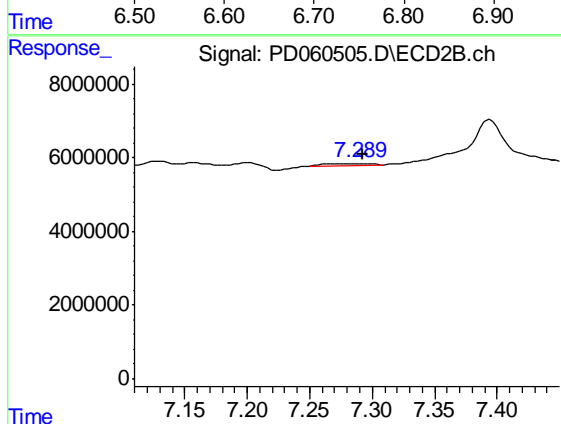
#18 Endrin aldehyde

R.T.: 7.129 min
 Delta R.T.: 0.060 min
 Response: 940068
 Conc: 0.35 ng/ml



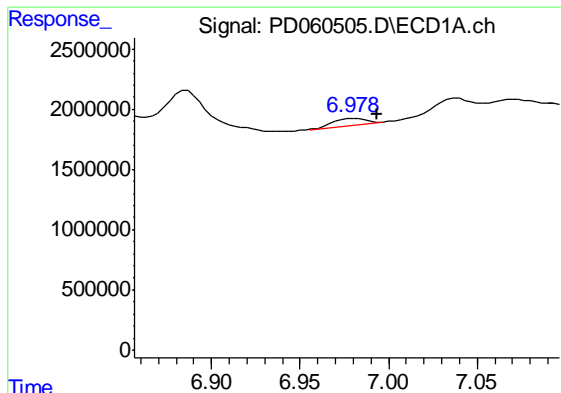
#19 Endosulfan Sulfate

R.T.: 6.748 min
 Delta R.T.: 0.013 min
 Response: 1947855
 Conc: 1.72 ng/ml



#19 Endosulfan Sulfate

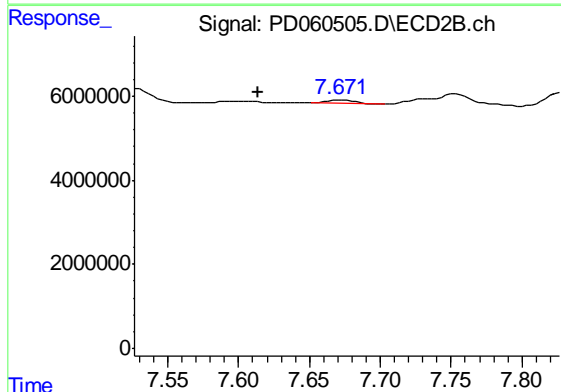
R.T.: 7.289 min
 Delta R.T.: -0.003 min
 Response: 978057
 Conc: 0.31 ng/ml



#20 Methoxychlor

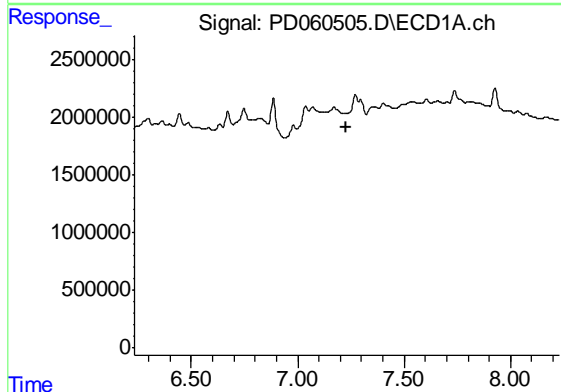
R.T.: 6.980 min
 Delta R.T.: -0.014 min
 Response: 700844
 Conc: 1.17 ng/ml

Instrument :
 ECD_D
 ClientSampleId :
 C0B02



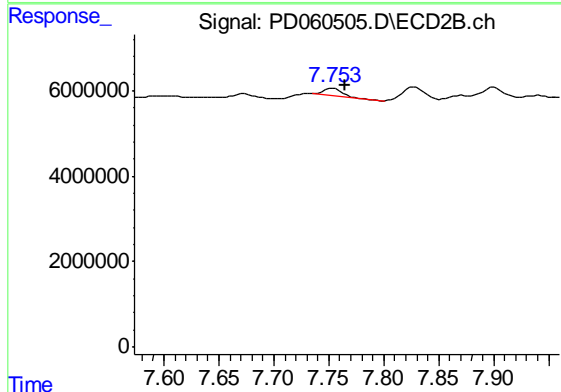
#20 Methoxychlor

R.T.: 7.672 min
 Delta R.T.: 0.059 min
 Response: 1214512
 Conc: 0.74 ng/ml



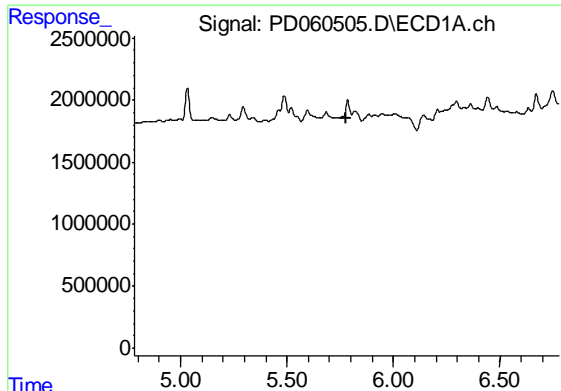
#21 Endrin ketone

R.T.: 0.000 min
 Exp R.T. : 7.230 min
 Response: 0
 Conc: N.D.



#21 Endrin ketone

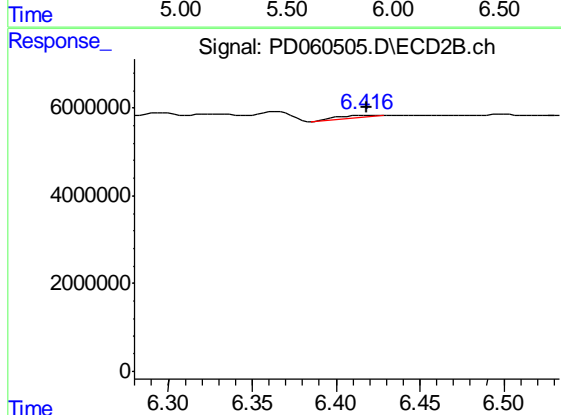
R.T.: 7.754 min
 Delta R.T.: -0.011 min
 Response: 2068515
 Conc: 0.61 ng/ml



#22 Toxaphene-1

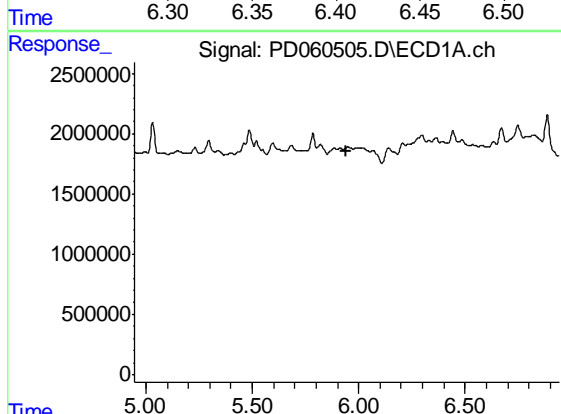
R.T.: 0.000 min
 Exp R.T. : 5.780 min
 Response: 0
 Conc: N.D.

Instrument :
 ECD_D
 ClientSampleId :
 C0B02



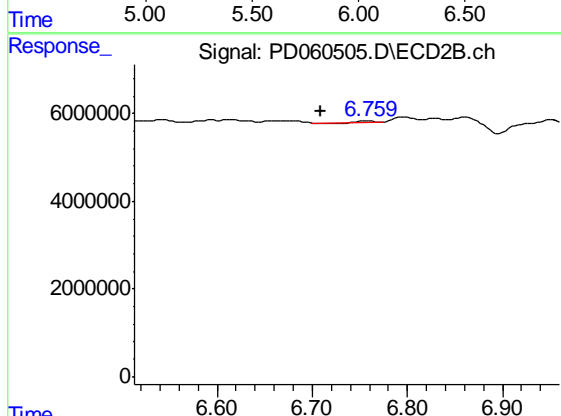
#22 Toxaphene-1

R.T.: 6.418 min
 Delta R.T.: 0.000 min
 Response: 784687
 Conc: 29.44 ng/ml



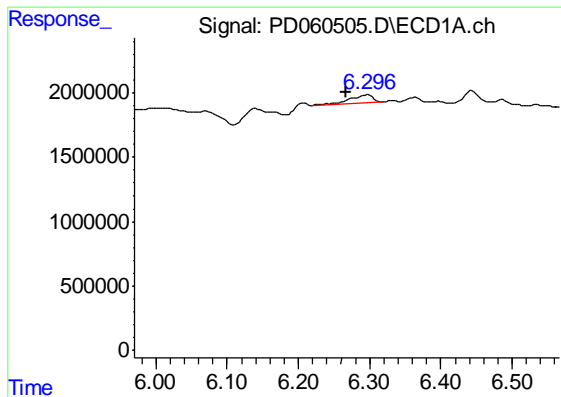
#23 Toxaphene-2

R.T.: 0.000 min
 Exp R.T. : 5.944 min
 Response: 0
 Conc: N.D.



#23 Toxaphene-2

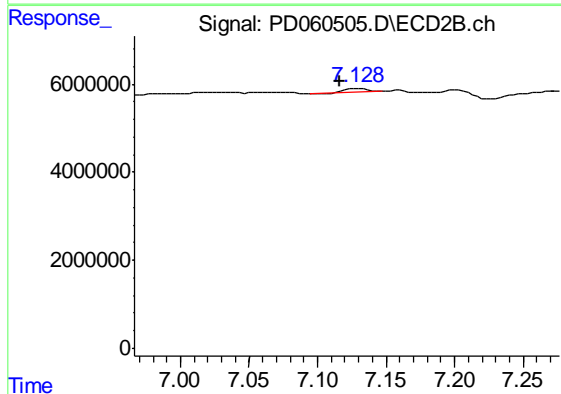
R.T.: 6.760 min
 Delta R.T.: 0.051 min
 Response: 131292
 Conc: 4.04 ng/ml



#24 Toxaphene-3

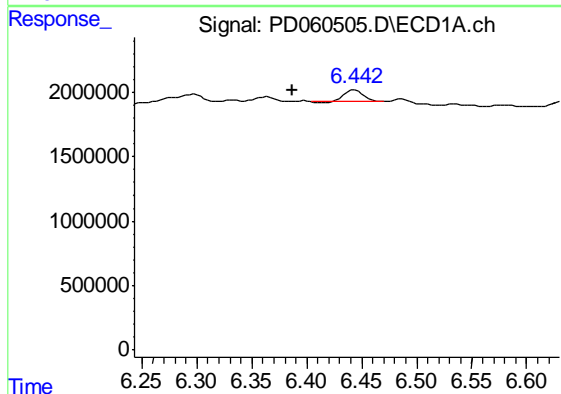
R.T.: 6.298 min
 Delta R.T.: 0.031 min
 Response: 1314203
 Conc: 89.01 ng/ml

Instrument :
 ECD_D
 ClientSampleId :
 C0B02



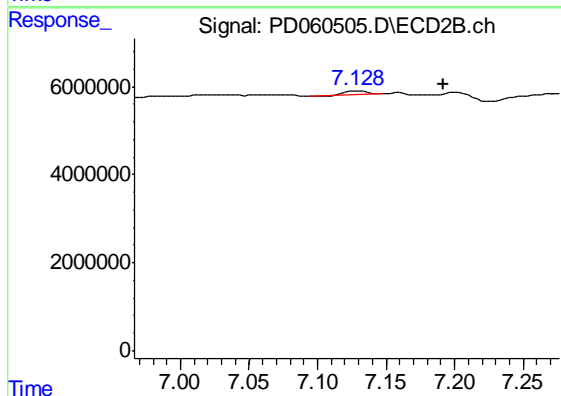
#24 Toxaphene-3

R.T.: 7.129 min
 Delta R.T.: 0.013 min
 Response: 940068
 Conc: 19.53 ng/ml



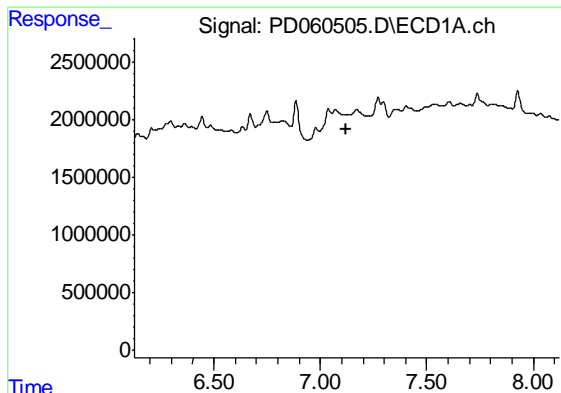
#25 Toxaphene-4

R.T.: 6.444 min
 Delta R.T.: 0.057 min
 Response: 1092398
 Conc: 32.62 ng/ml



#25 Toxaphene-4

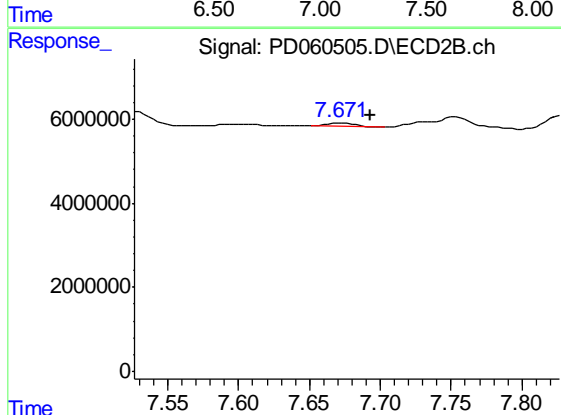
R.T.: 7.129 min
 Delta R.T.: -0.063 min
 Response: 940068
 Conc: 7.16 ng/ml



#26 Toxaphene-5

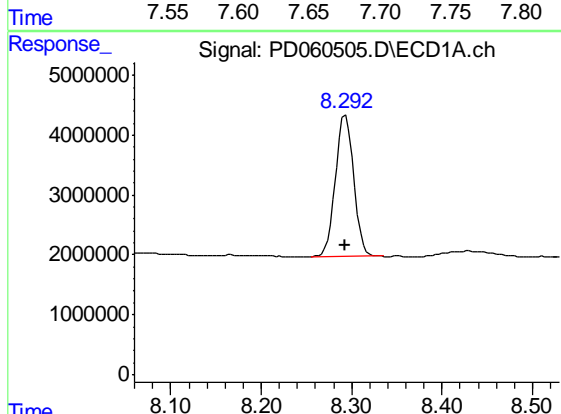
R.T.: 0.000 min
 Exp R.T. : 7.123 min
 Response: 0
 Conc: N.D.

Instrument :
 ECD_D
 ClientSampleId :
 C0B02



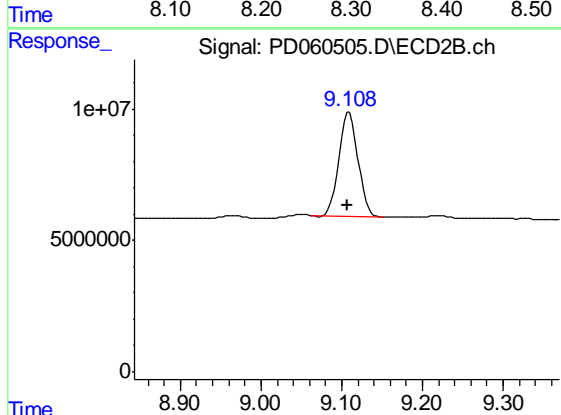
#26 Toxaphene-5

R.T.: 7.672 min
 Delta R.T.: -0.021 min
 Response: 1214512
 Conc: 20.81 ng/ml



#27 Decachlorobiphenyl

R.T.: 8.293 min
 Delta R.T.: 0.000 min
 Response: 32927828
 Conc: 24.32 ng/ml



#27 Decachlorobiphenyl

R.T.: 9.109 min
 Delta R.T.: 0.001 min
 Response: 64830720
 Conc: 22.37 ng/ml