

Data Path : Z:\pestpcbsrv\HPCHEM1\ECD_D\Data\PD120225\
 Data File : PD091417.D
 Signal(s) : Signal #1: ECD1A.ch Signal #2: ECD2B.ch
 Acq On : 02 Dec 2025 12:04
 Operator : AR\AJ
 Sample : PEM
 Misc :
 ALS Vial : 3 Sample Multiplier: 1

Instrument :
 ECD_D
 ClientSampleId :
 PEM

Integration File signal 1: autoint1.e
 Integration File signal 2: autoint2.e
 Quant Time: Dec 03 01:07:53 2025
 Quant Method : Z:\pestpcbsrv\HPCHEM1\ECD_D\Method\PD111525.M
 Quant Title : GC Extractables
 QLast Update : Sat Nov 15 04:46:13 2025
 Response via : Initial Calibration
 Integrator: ChemStation

Volume Inj. : 1 µl
 Signal #1 Phase : ZB-MR2 Signal #2 Phase: ZB-MR2
 Signal #1 Info : 30M x 0.32mm x0.5 Signal #2 Info : 30M x 0.32mm x 0.25µm

	Compound	RT#1	RT#2	Resp#1	Resp#2	ng/ml	ng/ml

System Monitoring Compounds							
1)	SA Tetrachlo...	3.541	2.871	73104427	878.1E6	21.198	23.971
28)	SA Decachlor...	9.063	8.056	99847872	881.0E6	20.042	22.261
Target Compounds							
2)	A alpha-BHC	3.990	3.382	72725073	742.3E6	9.096	11.745 #
3)	MA gamma-BHC...	4.321	3.718	69500348	683.3E6	9.300	11.817 #
4)	MA Heptachlor	4.941f	4.076	599802	842212	0.084	0.015 #
5)	MB Aldrin	0.000	4.354	0	16725231	N.D.	0.296 #
6)	B beta-BHC	4.509	4.015	29474450	280.4E6	10.144	11.671
7)	B delta-BHC	4.768	4.246	2546142	1308437	0.343	0.022 #
8)	B Heptachlo...	5.672	0.000	6844859	0	1.054	N.D. #
10)	B gamma-Chl...	5.906f	5.113	2735688	240.0E6	0.421	4.393 #
11)	B alpha-Chl...	5.994f	5.172	16080521	32245807	2.336	0.616 #
12)	B 4,4'-DDE	6.187	5.361	1282892	127.2E6	0.221	2.380 #
13)	MA Dieldrin	6.360f	5.515	3098226	3002909	0.479	0.055 #
14)	MA Endrin	6.565	5.776	252.6E6	2610.3E6	50.896	57.760
15)	B Endosulfa...	6.761f	6.072	4057486	35847344	0.730	0.768
16)	A 4,4'-DDD	6.697	5.915	33751148	318.2E6	6.872	6.511
17)	MA 4,4'-DDT	7.014	6.169	401.9E6	4497.8E6	97.183	114.938
18)	B Endrin al...	6.908	6.244	7430762	47894204	1.784	1.357
19)	B Endosulfa...	7.111f	6.447f	186434	11285887	0.036	0.252 #
20)	A Methoxychlor	7.486	6.740	478.0E6	4342.4E6	219.850	216.566
21)	B Endrin ke...	7.623	6.977	13859875	161.4E6	2.460	3.167 #
22)	Mirex	0.000	7.160	0	11593509	N.D.	0.350 #
23)	Chlordane-1	0.000	3.895	0	1139919	N.D.	0.663 #
24)	Chlordane-2	0.000	4.481	0	148.7E6	N.D.	84.937 #
25)	Chlordane-3	0.000	5.113	0	240.0E6	N.D.	41.711 #
26)	Chlordane-4	5.994f	5.172	16080521	32245807	13.387	6.741 #
27)	Chlordane-5	6.850	6.072	3070306	35847344	15.540	17.666

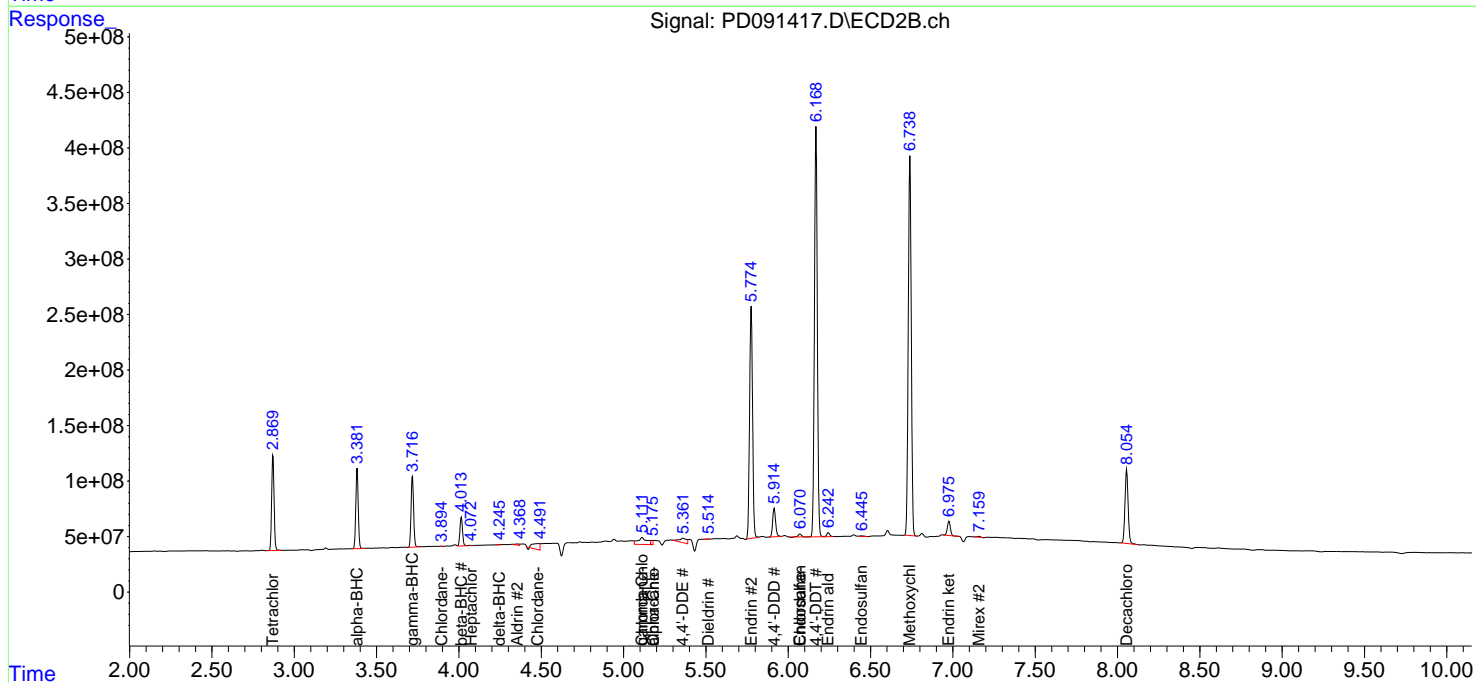
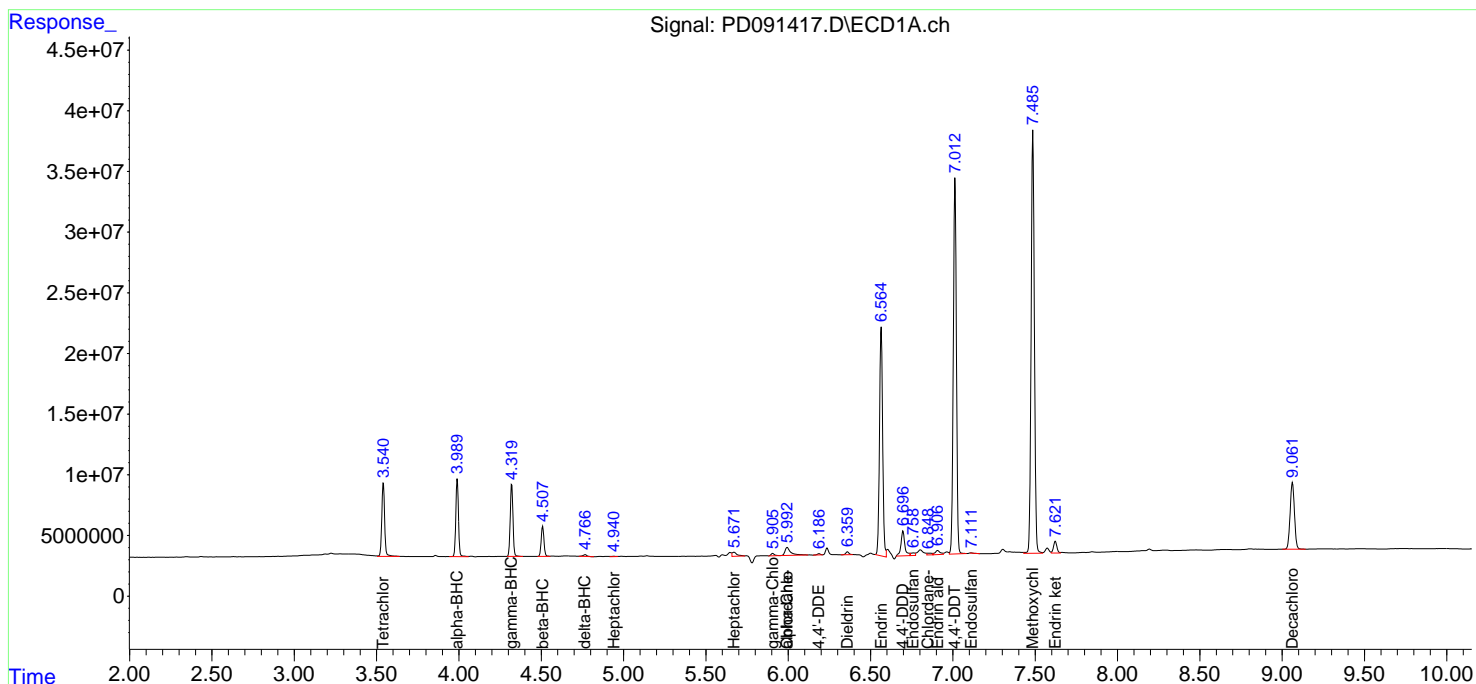
(f)=RT Delta > 1/2 Window (#)=Amounts differ by > 25% (m)=manual int.

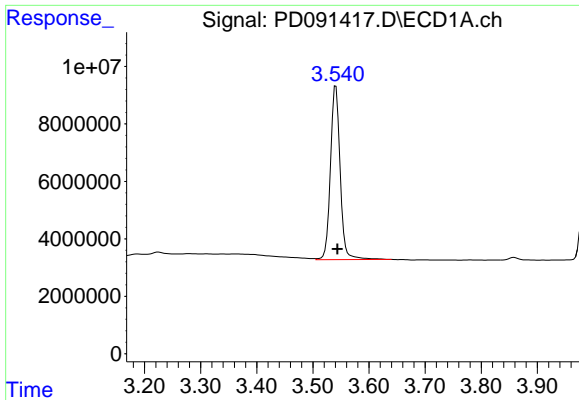
Data Path : Z:\pestpcbsrv\HPCHEM1\ECD_D\Data\PD120225\
 Data File : PD091417.D
 Signal(s) : Signal #1: ECD1A.ch Signal #2: ECD2B.ch
 Acq On : 02 Dec 2025 12:04
 Operator : AR\AJ
 Sample : PEM
 Misc :
 ALS Vial : 3 Sample Multiplier: 1

Instrument :
 ECD_D
 ClientSampleId :
 PEM

Integration File signal 1: autoint1.e
 Integration File signal 2: autoint2.e
 Quant Time: Dec 03 01:07:53 2025
 Quant Method : Z:\pestpcbsrv\HPCHEM1\ECD_D\Method\PD111525.M
 Quant Title : GC Extractables
 QLast Update : Sat Nov 15 04:46:13 2025
 Response via : Initial Calibration
 Integrator: ChemStation

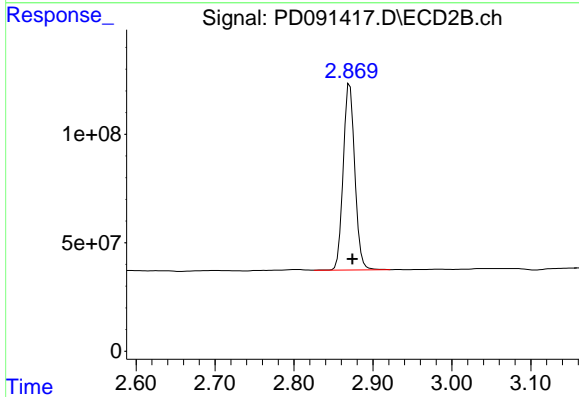
Volume Inj. : 1 µl
 Signal #1 Phase : ZB-MR1 Signal #2 Phase: ZB-MR2
 Signal #1 Info : 30M x 0.32mm x0.5 Signal #2 Info : 30M x 0.32mm x 0.25µm



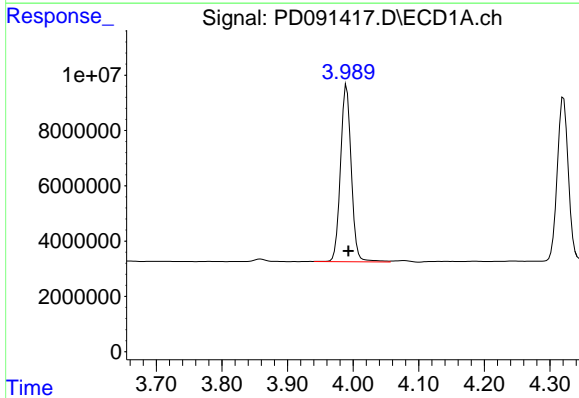


#1 Tetrachloro-m-xylene
 R.T.: 3.541 min
 Delta R.T.: -0.003 min
 Response: 73104427
 Conc: 21.20 ng/ml

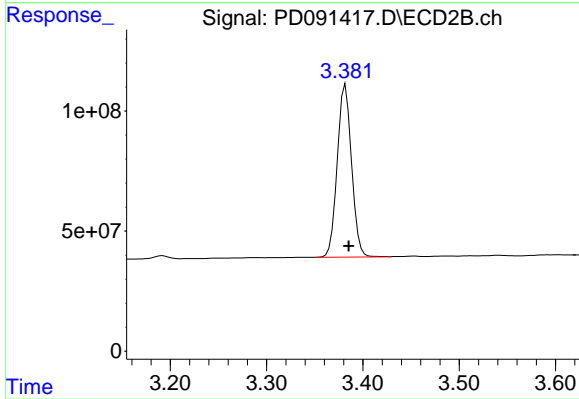
Instrument :
 ECD_D
 ClientSampleId :
 PEM



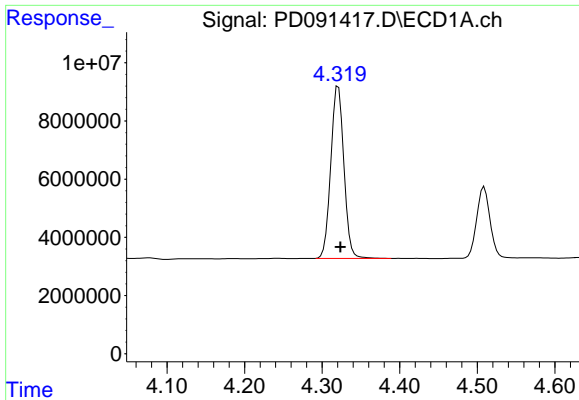
#1 Tetrachloro-m-xylene
 R.T.: 2.871 min
 Delta R.T.: -0.003 min
 Response: 878069427
 Conc: 23.97 ng/ml



#2 alpha-BHC
 R.T.: 3.990 min
 Delta R.T.: -0.003 min
 Response: 72725073
 Conc: 9.10 ng/ml

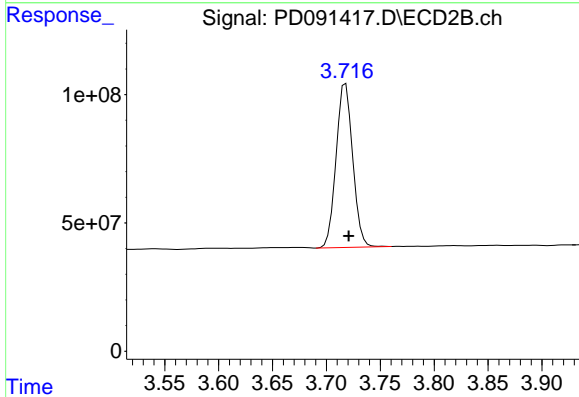


#2 alpha-BHC
 R.T.: 3.382 min
 Delta R.T.: -0.003 min
 Response: 742333985
 Conc: 11.75 ng/ml

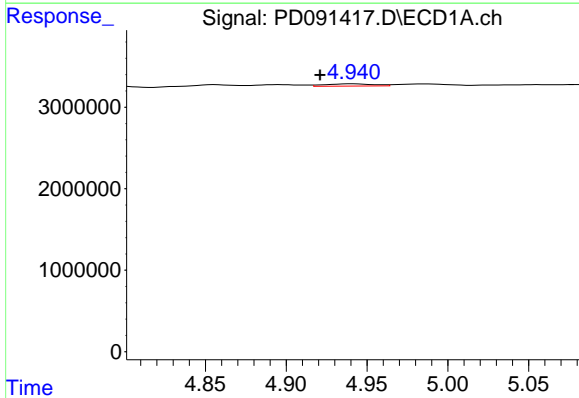


#3 gamma-BHC (Lindane)
 R.T.: 4.321 min
 Delta R.T.: -0.003 min
 Response: 69500348
 Conc: 9.30 ng/ml

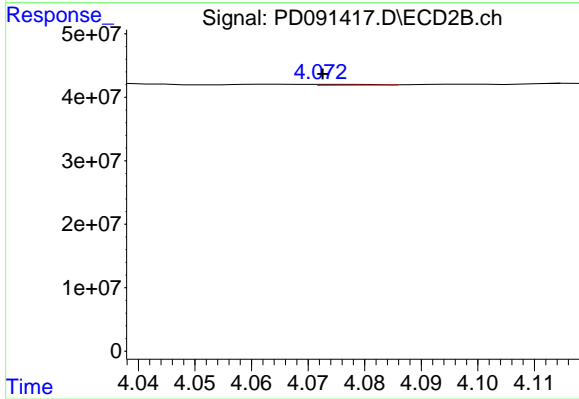
Instrument :
 ECD_D
 ClientSampleId :
 PEM



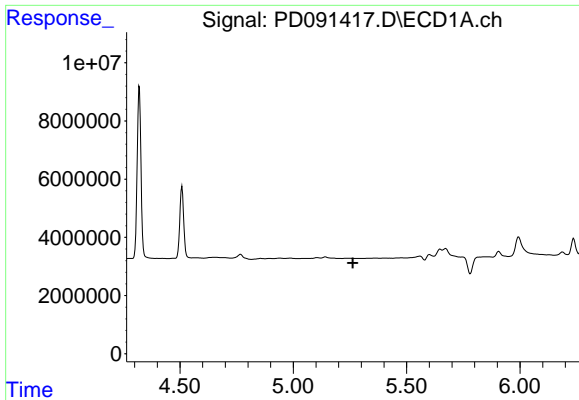
#3 gamma-BHC (Lindane)
 R.T.: 3.718 min
 Delta R.T.: -0.003 min
 Response: 683292222
 Conc: 11.82 ng/ml



#4 Heptachlor
 R.T.: 4.941 min
 Delta R.T.: 0.020 min
 Response: 599802
 Conc: 0.08 ng/ml



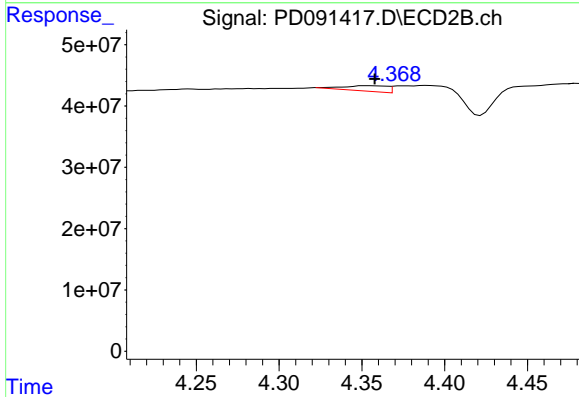
#4 Heptachlor
 R.T.: 4.076 min
 Delta R.T.: 0.003 min
 Response: 842212
 Conc: 0.02 ng/ml



#5 Aldrin

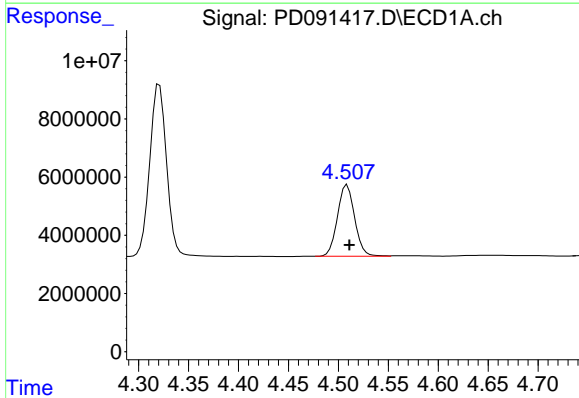
R.T.: 0.000 min
 Exp R.T.: 5.262 min
 Response: 0
 Conc: N.D.

Instrument :
 ECD_D
 ClientSampleId :
 PEM



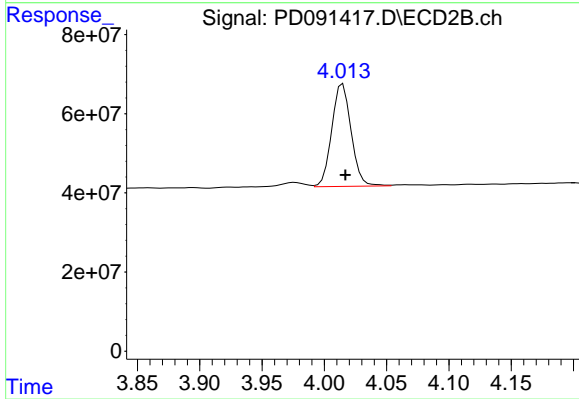
#5 Aldrin

R.T.: 4.354 min
 Delta R.T.: -0.003 min
 Response: 16725231
 Conc: 0.30 ng/ml



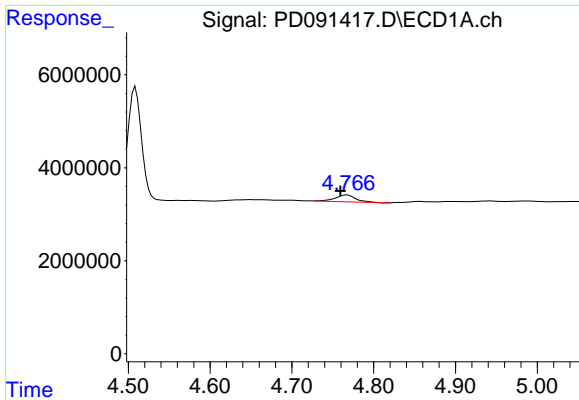
#6 beta-BHC

R.T.: 4.509 min
 Delta R.T.: -0.002 min
 Response: 29474450
 Conc: 10.14 ng/ml



#6 beta-BHC

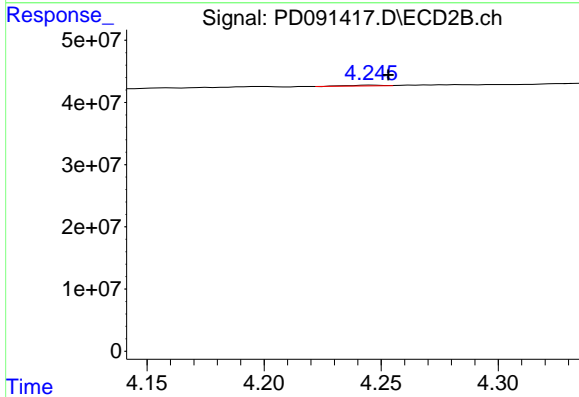
R.T.: 4.015 min
 Delta R.T.: -0.002 min
 Response: 280422707
 Conc: 11.67 ng/ml



#7 delta-BHC

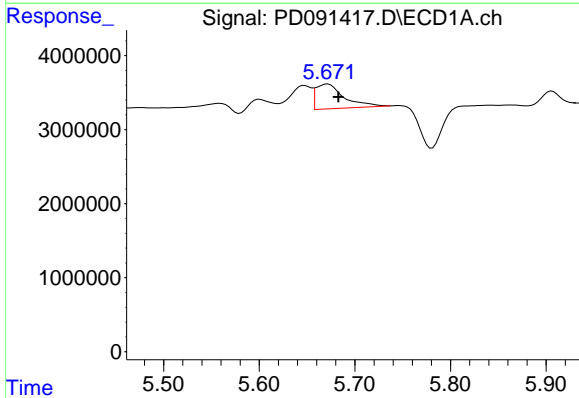
R.T.: 4.768 min
 Delta R.T.: 0.008 min
 Response: 2546142
 Conc: 0.34 ng/ml

Instrument :
 ECD_D
 ClientSampleId :
 PEM



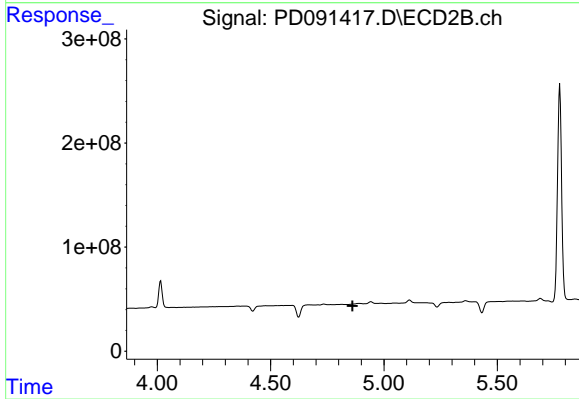
#7 delta-BHC

R.T.: 4.246 min
 Delta R.T.: -0.007 min
 Response: 1308437
 Conc: 0.02 ng/ml



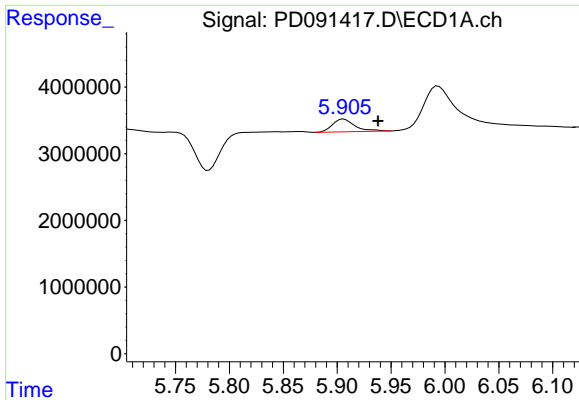
#8 Heptachlor epoxide

R.T.: 5.672 min
 Delta R.T.: -0.011 min
 Response: 6844859
 Conc: 1.05 ng/ml



#8 Heptachlor epoxide

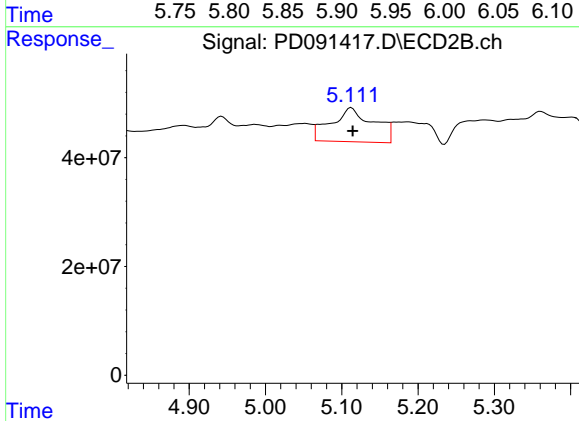
R.T.: 0.000 min
 Exp R.T. : 4.862 min
 Response: 0
 Conc: N.D.



#10 gamma-Chlordane

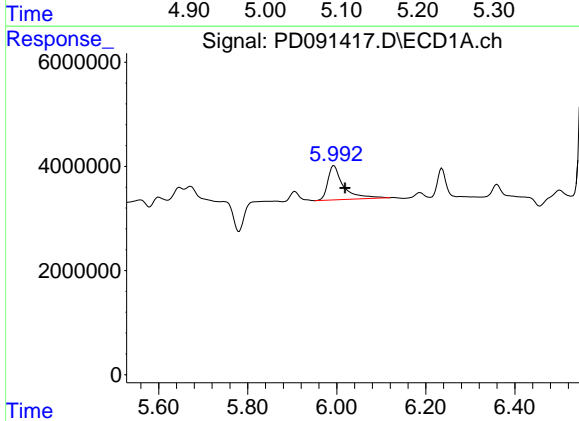
R.T.: 5.906 min
 Delta R.T.: -0.032 min
 Response: 2735688
 Conc: 0.42 ng/ml

Instrument :
 ECD_D
 ClientSampleId :
 PEM



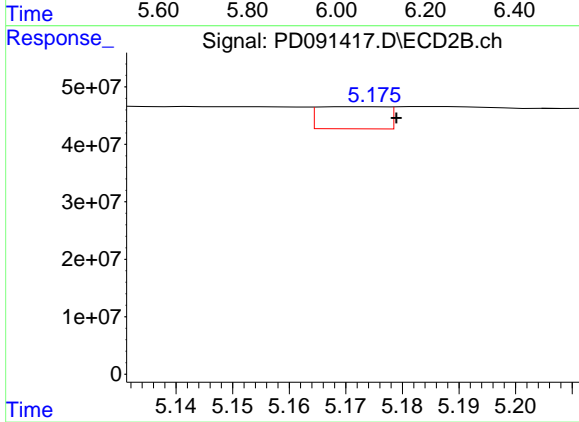
#10 gamma-Chlordane

R.T.: 5.113 min
 Delta R.T.: -0.002 min
 Response: 239987799
 Conc: 4.39 ng/ml



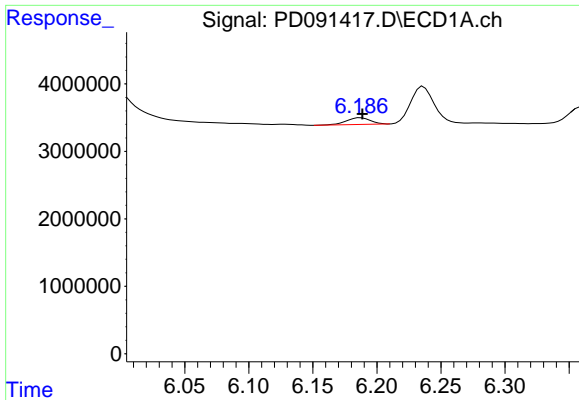
#11 alpha-Chlordane

R.T.: 5.994 min
 Delta R.T.: -0.025 min
 Response: 16080521
 Conc: 2.34 ng/ml



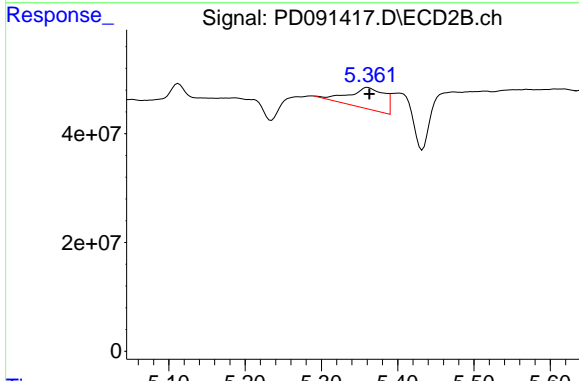
#11 alpha-Chlordane

R.T.: 5.172 min
 Delta R.T.: -0.007 min
 Response: 32245807
 Conc: 0.62 ng/ml

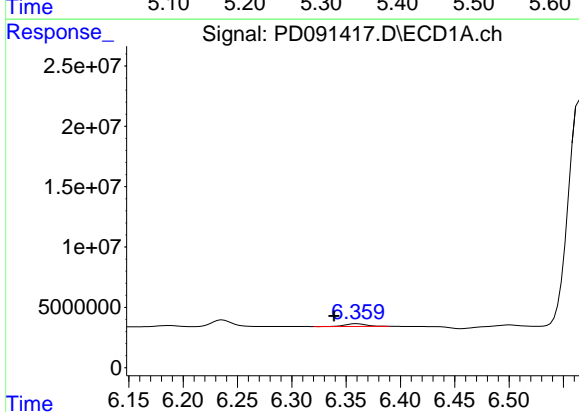


#12 4,4'-DDE
 R.T.: 6.187 min
 Delta R.T.: -0.001 min
 Response: 1282892
 Conc: 0.22 ng/ml

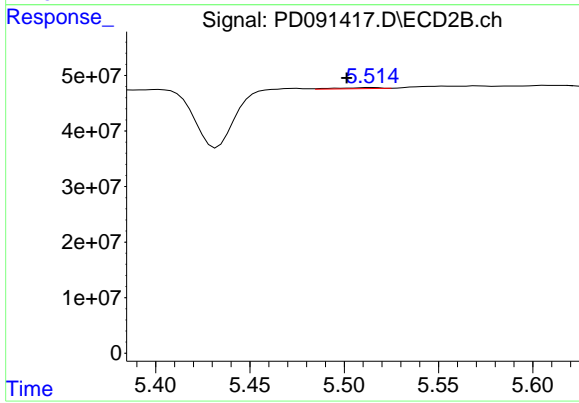
Instrument :
 ECD_D
 ClientSampleId :
 PEM



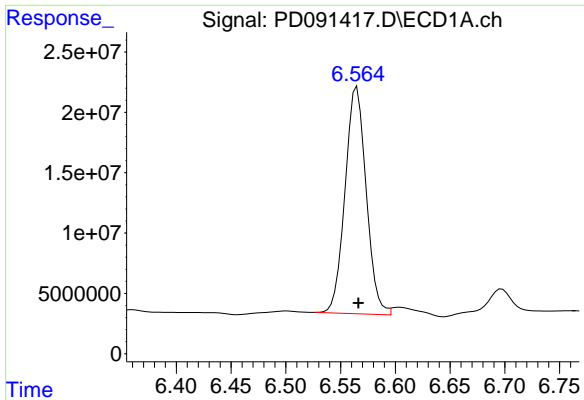
#12 4,4'-DDE
 R.T.: 5.361 min
 Delta R.T.: -0.002 min
 Response: 127210963
 Conc: 2.38 ng/ml



#13 Dieldrin
 R.T.: 6.360 min
 Delta R.T.: 0.021 min
 Response: 3098226
 Conc: 0.48 ng/ml



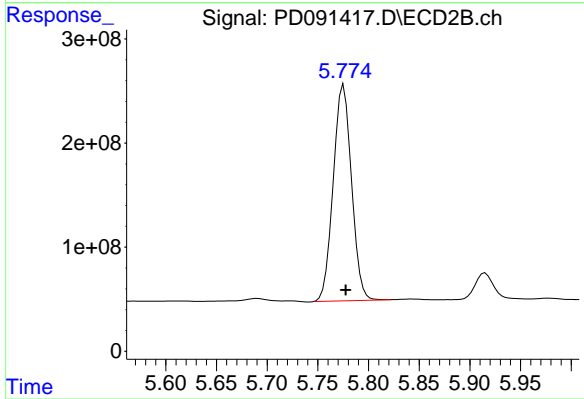
#13 Dieldrin
 R.T.: 5.515 min
 Delta R.T.: 0.014 min
 Response: 3002909
 Conc: 0.06 ng/ml



#14 Endrin

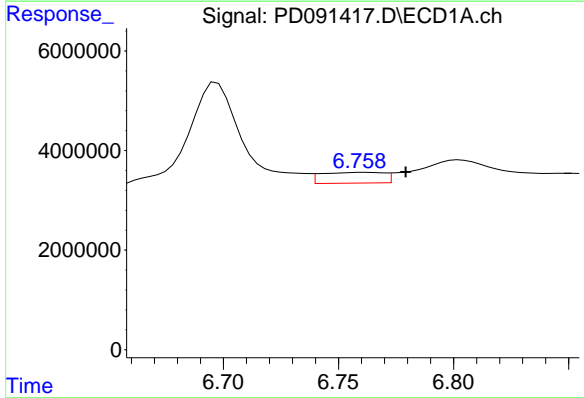
R.T.: 6.565 min
 Delta R.T.: -0.001 min
 Response: 252622627
 Conc: 50.90 ng/ml

Instrument :
 ECD_D
 ClientSampleId :
 PEM



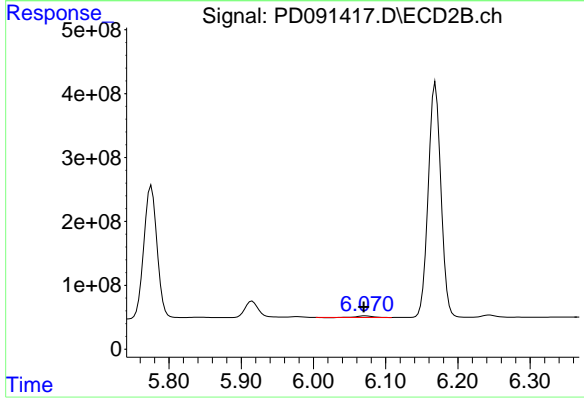
#14 Endrin

R.T.: 5.776 min
 Delta R.T.: -0.002 min
 Response: 2610306373
 Conc: 57.76 ng/ml



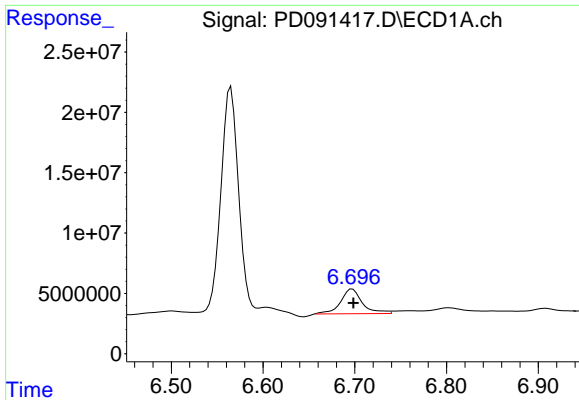
#15 Endosulfan II

R.T.: 6.761 min
 Delta R.T.: -0.018 min
 Response: 4057486
 Conc: 0.73 ng/ml



#15 Endosulfan II

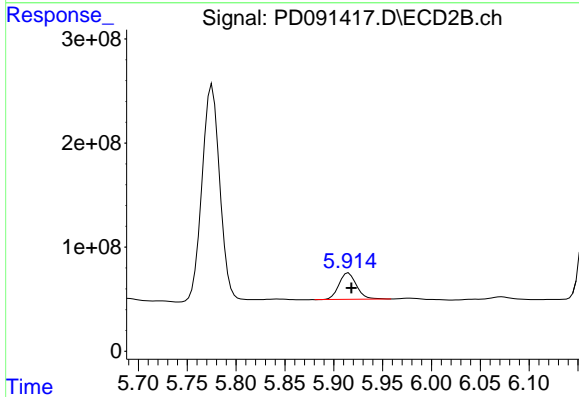
R.T.: 6.072 min
 Delta R.T.: 0.002 min
 Response: 35847344
 Conc: 0.77 ng/ml



#16 4,4'-DDD

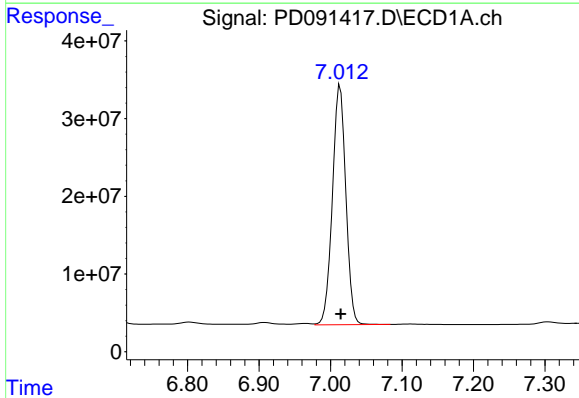
R.T.: 6.697 min
 Delta R.T.: -0.001 min
 Response: 33751148
 Conc: 6.87 ng/ml

Instrument :
 ECD_D
 ClientSampleId :
 PEM



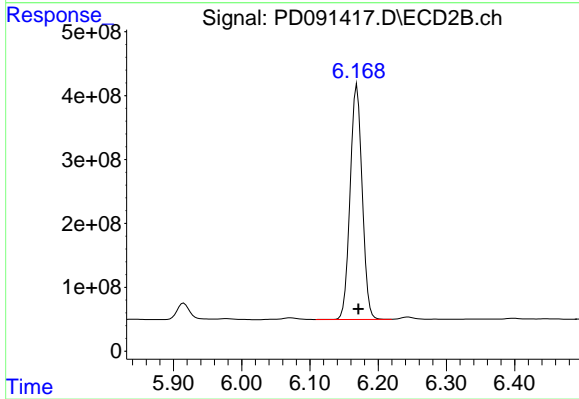
#16 4,4'-DDD

R.T.: 5.915 min
 Delta R.T.: -0.003 min
 Response: 318185776
 Conc: 6.51 ng/ml



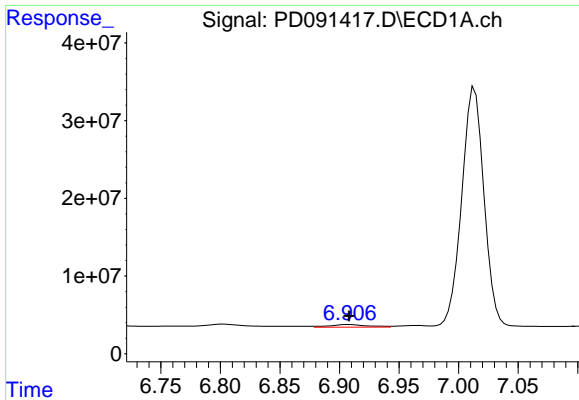
#17 4,4'-DDT

R.T.: 7.014 min
 Delta R.T.: 0.000 min
 Response: 401899202
 Conc: 97.18 ng/ml



#17 4,4'-DDT

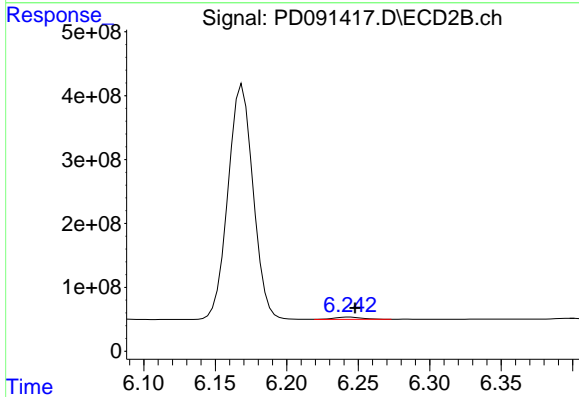
R.T.: 6.169 min
 Delta R.T.: -0.002 min
 Response: 4497797600
 Conc: 114.94 ng/ml



#18 Endrin aldehyde

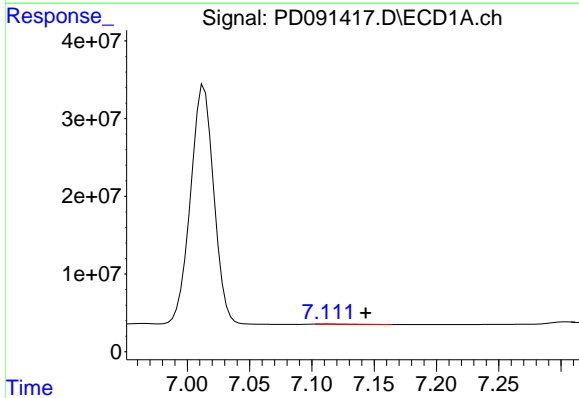
R.T.: 6.908 min
 Delta R.T.: 0.000 min
 Response: 7430762
 Conc: 1.78 ng/ml

Instrument :
 ECD_D
 ClientSampleId :
 PEM



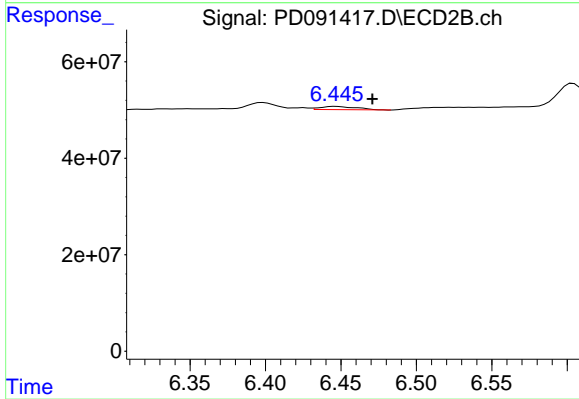
#18 Endrin aldehyde

R.T.: 6.244 min
 Delta R.T.: -0.004 min
 Response: 47894204
 Conc: 1.36 ng/ml



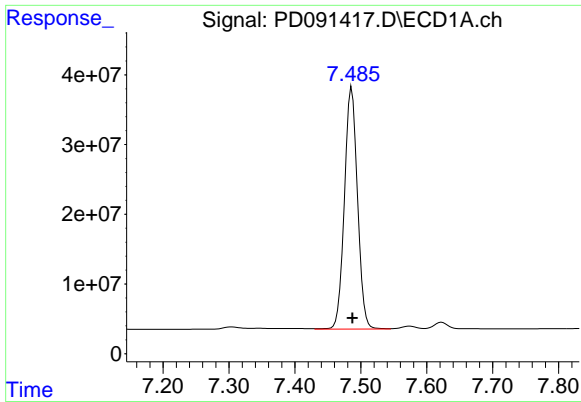
#19 Endosulfan Sulfate

R.T.: 7.111 min
 Delta R.T.: -0.032 min
 Response: 186434
 Conc: 0.04 ng/ml



#19 Endosulfan Sulfate

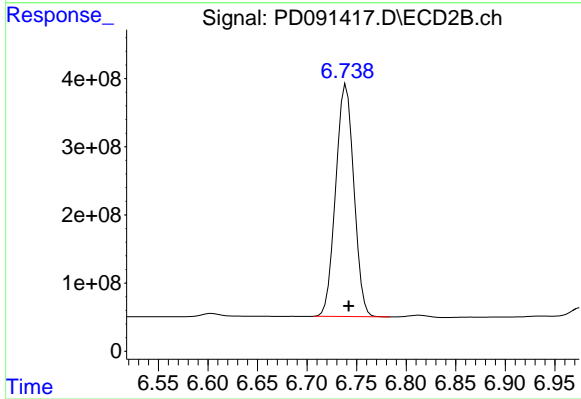
R.T.: 6.447 min
 Delta R.T.: -0.024 min
 Response: 11285887
 Conc: 0.25 ng/ml



#20 Methoxychlor

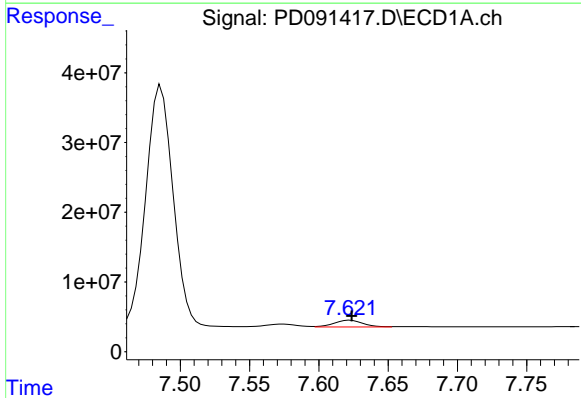
R.T.: 7.486 min
 Delta R.T.: 0.000 min
 Response: 478027443
 Conc: 219.85 ng/ml

Instrument :
 ECD_D
 ClientSampleId :
 PEM



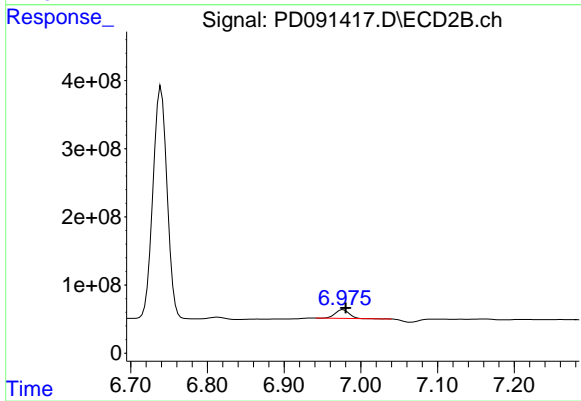
#20 Methoxychlor

R.T.: 6.740 min
 Delta R.T.: -0.003 min
 Response: 4342448707
 Conc: 216.57 ng/ml



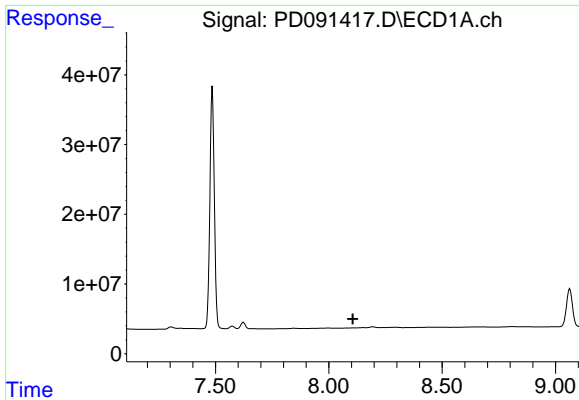
#21 Endrin ketone

R.T.: 7.623 min
 Delta R.T.: -0.001 min
 Response: 13859875
 Conc: 2.46 ng/ml



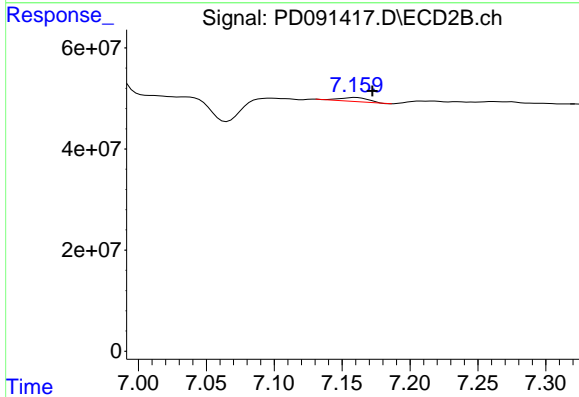
#21 Endrin ketone

R.T.: 6.977 min
 Delta R.T.: -0.003 min
 Response: 161389595
 Conc: 3.17 ng/ml

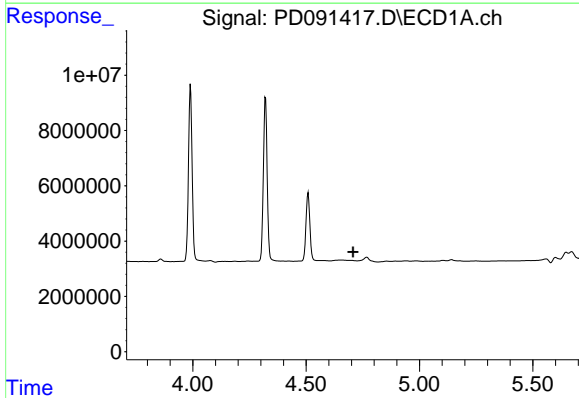


#22 Mirex
 R.T.: 0.000 min
 Exp R.T.: 8.106 min
 Response: 0
 Conc: N.D.

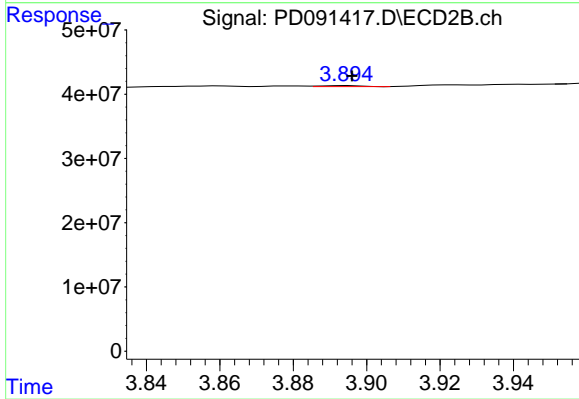
Instrument :
 ECD_D
 ClientSampleId :
 PEM



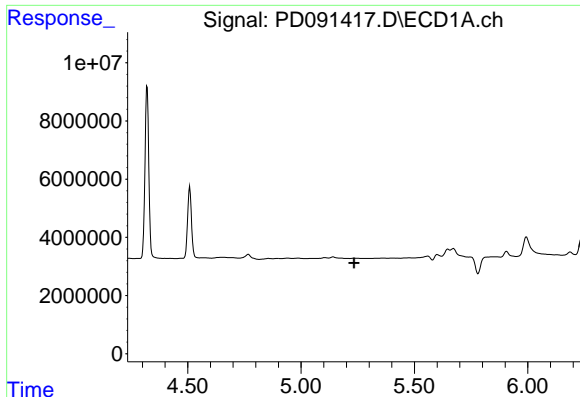
#22 Mirex
 R.T.: 7.160 min
 Delta R.T.: -0.012 min
 Response: 11593509
 Conc: 0.35 ng/ml



#23 Chlordane-1
 R.T.: 0.000 min
 Exp R.T.: 4.707 min
 Response: 0
 Conc: N.D.



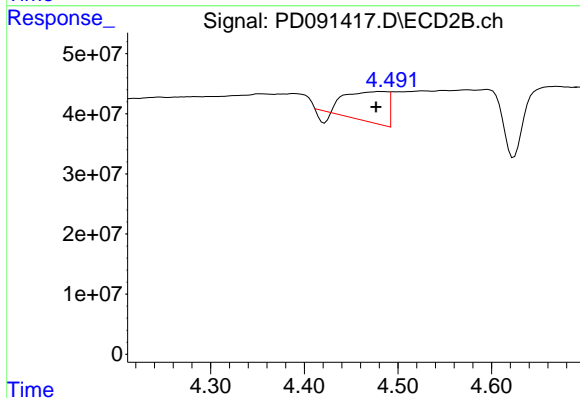
#23 Chlordane-1
 R.T.: 3.895 min
 Delta R.T.: 0.000 min
 Response: 1139919
 Conc: 0.66 ng/ml



#24 Chlordane-2

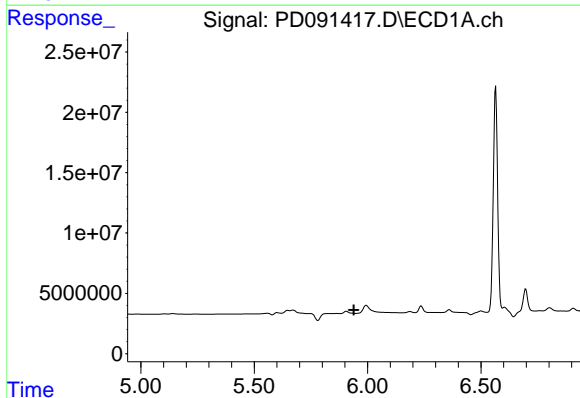
R.T.: 0.000 min
 Exp R.T. : 5.234 min
 Response: 0
 Conc: N.D.

Instrument :
 ECD_D
 ClientSampleId :
 PEM



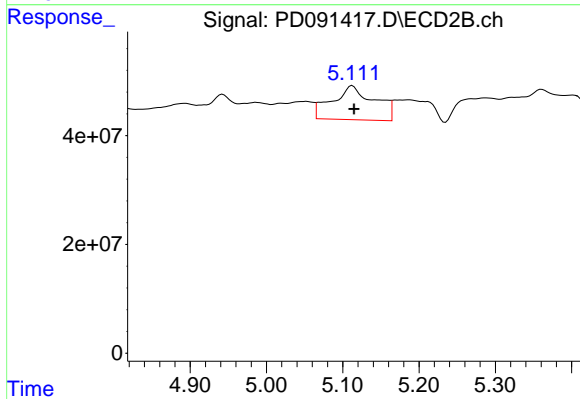
#24 Chlordane-2

R.T.: 4.481 min
 Delta R.T.: 0.005 min
 Response: 148727183
 Conc: 84.94 ng/ml



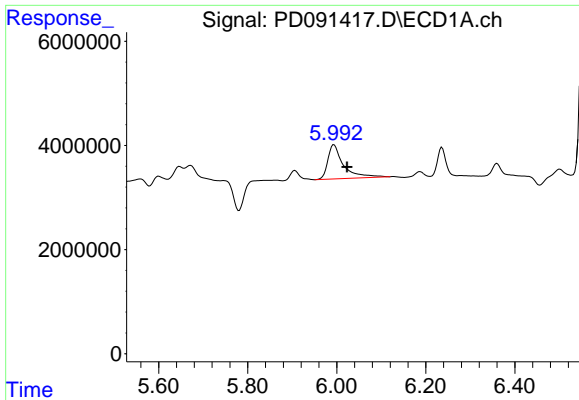
#25 Chlordane-3

R.T.: 0.000 min
 Exp R.T. : 5.939 min
 Response: 0
 Conc: N.D.



#25 Chlordane-3

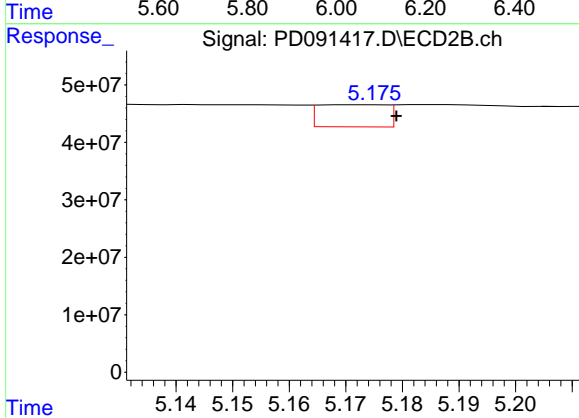
R.T.: 5.113 min
 Delta R.T.: -0.002 min
 Response: 239987799
 Conc: 41.71 ng/ml



#26 Chlordane-4

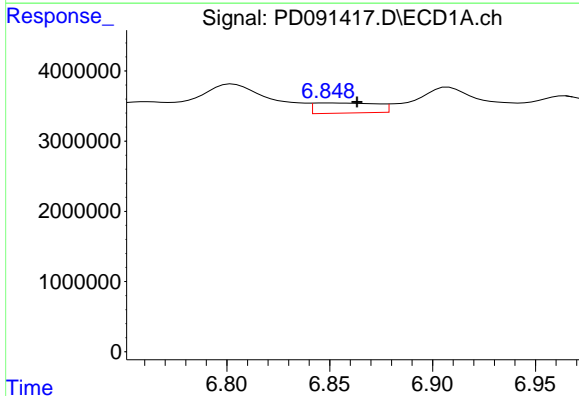
R.T.: 5.994 min
 Delta R.T.: -0.030 min
 Response: 16080521
 Conc: 13.39 ng/ml

Instrument :
 ECD_D
 ClientSampleId :
 PEM



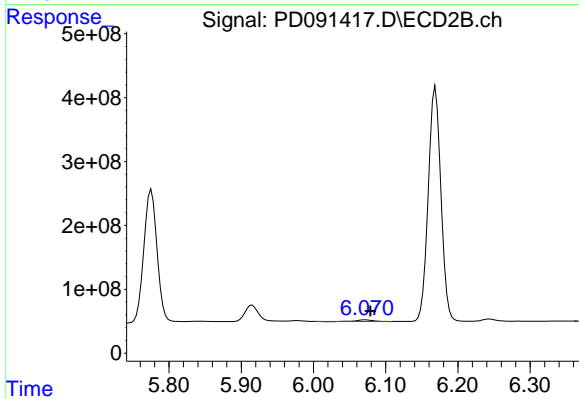
#26 Chlordane-4

R.T.: 5.172 min
 Delta R.T.: -0.007 min
 Response: 32245807
 Conc: 6.74 ng/ml



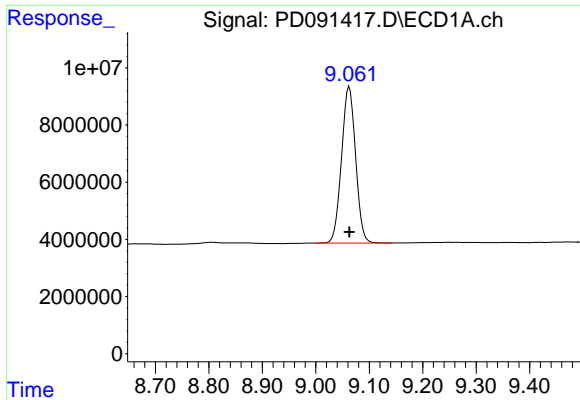
#27 Chlordane-5

R.T.: 6.850 min
 Delta R.T.: -0.013 min
 Response: 3070306
 Conc: 15.54 ng/ml



#27 Chlordane-5

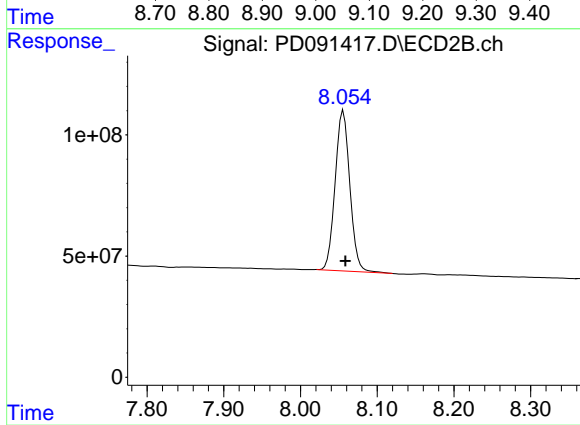
R.T.: 6.072 min
 Delta R.T.: -0.007 min
 Response: 35847344
 Conc: 17.67 ng/ml



#28 Decachlorobiphenyl

R.T.: 9.063 min
Delta R.T.: 0.000 min
Response: 99847872
Conc: 20.04 ng/ml

Instrument :
ECD_D
ClientSampleId :
PEM



#28 Decachlorobiphenyl

R.T.: 8.056 min
Delta R.T.: -0.003 min
Response: 880987934
Conc: 22.26 ng/ml