

Data Path : Z:\pestpcbsrv\HPCHEM1\ECD_D\Data\PD120225\
 Data File : PD091435.D
 Signal(s) : Signal #1: ECD1A.ch Signal #2: ECD2B.ch
 Acq On : 02 Dec 2025 19:26
 Operator : AR\AJ
 Sample : Q3742-06
 Misc :
 ALS Vial : 16 Sample Multiplier: 1

Instrument :
 ECD_D
 ClientSampleId :
 SB-1125-13

Integration File signal 1: autoint1.e
 Integration File signal 2: autoint2.e
 Quant Time: Dec 03 01:11:03 2025
 Quant Method : Z:\pestpcbsrv\HPCHEM1\ECD_D\Method\PD111525.M
 Quant Title : GC Extractables
 QLast Update : Sat Nov 15 04:46:13 2025
 Response via : Initial Calibration
 Integrator: ChemStation

Volume Inj. : 1 µl
 Signal #1 Phase : ZB-MR1 Signal #2 Phase: ZB-MR2
 Signal #1 Info : 30M x 0.32mm x0.5 Signal #2 Info : 30M x 0.32mm x 0.25µm

Compound	RT#1	RT#2	Resp#1	Resp#2	ng/ml	ng/ml
System Monitoring Compounds						
1) SA Tetrachlo...	3.542	2.872	155.8E6	554.1E6	45.187	15.126 #
28) SA Decachlor...	9.064	8.059	78110422	633.9E6	15.679	16.017
Target Compounds						
2) A alpha-BHC	0.000	3.393	0	8782805	N.D.	0.139 #
4) MA Heptachlor	4.943f	4.082	5260582	49357629	0.735	0.894
5) MB Aldrin	5.250	4.366	5096643	3449.9E6	0.702	61.105 #
6) B beta-BHC	4.487f	4.032	4214788	60723508	1.451	2.527 #
7) B delta-BHC	4.777f	4.246	37603589	27129928	5.060	0.464 #
8) B Heptachlo...	0.000	4.869	0	885.2E6	N.D.	17.371 #
9) A Endosulfan I	6.051f	5.233	4316995	199.4E6	0.703	4.166 #
10) B gamma-Chl...	0.000	5.093f	0	1843.8E6	N.D.	33.752 #
11) B alpha-Chl...	6.051f	0.000	4316995	0	0.627	N.D. #
14) MA Endrin	6.577	5.779	1220597	39949422	0.246	0.884 #
15) B Endosulfa...	6.778	6.087f	533444	73343930	0.096	1.571 #
16) A 4,4'-DDD	6.688	5.925	2243878	-21020860	0.457	N.D. #
17) MA 4,4'-DDT	7.015	6.169	2932321	48644358	0.709	1.243 #
18) B Endrin al...	6.921	6.262	3345161	21506347	0.803	0.609
19) B Endosulfa...	7.164f	6.451f	-284319	7404888	N.D.	0.165
20) A Methoxychlor	7.480	6.723f	2279204	20014690	1.048	0.998
21) B Endrin ke...	7.597f	0.000	3467219	0	0.615	N.D. #
22) Mirex	0.000	7.161	0	1510996	N.D.	0.046 #
23) Chlordane-1	4.682f	3.888	12499343	47427932	50.799	27.570 #
24) Chlordane-2	5.250	4.494	5096643	11440662	20.640	6.534 #
25) Chlordane-3	0.000	5.093f	0	1843.8E6	N.D.	320.458 #
26) Chlordane-4	6.051f	0.000	4316995	0	3.594	N.D. #
27) Chlordane-5	0.000	6.087	0	73343930	N.D.	36.144 #

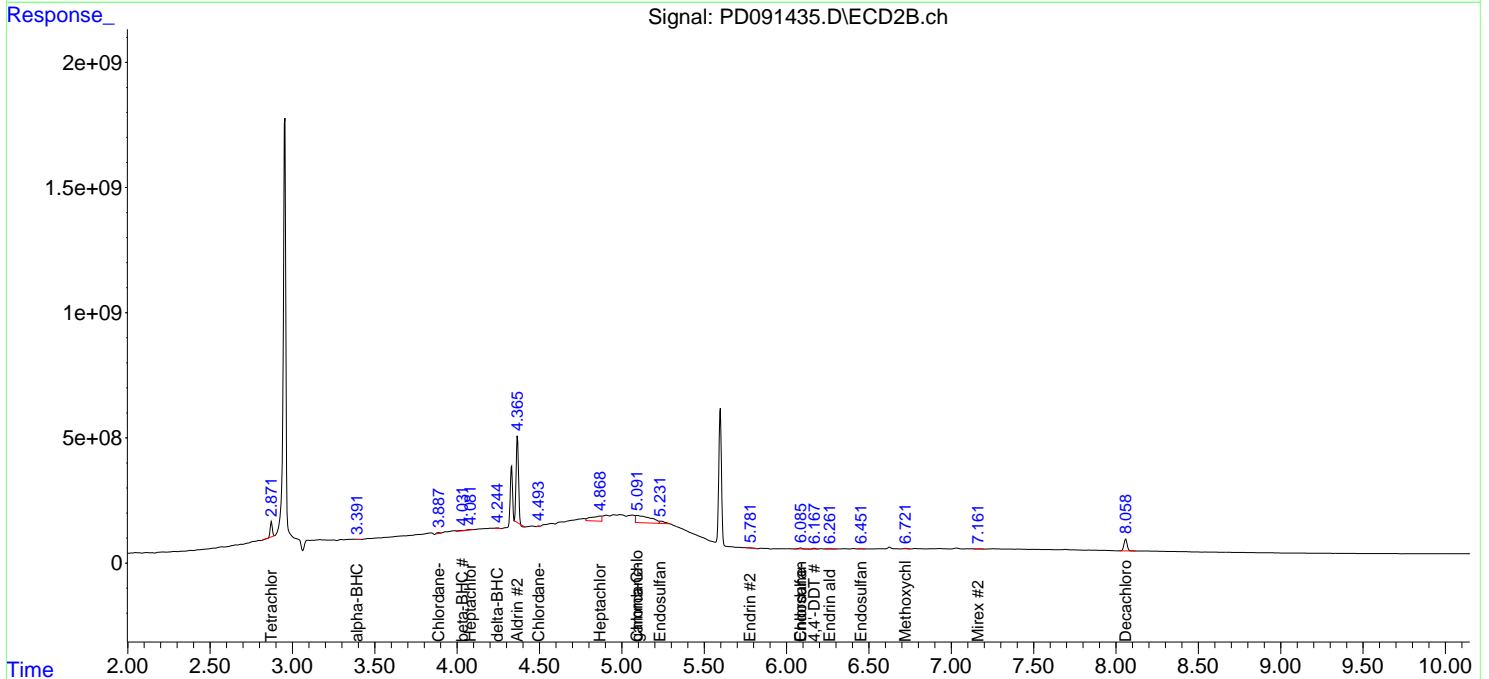
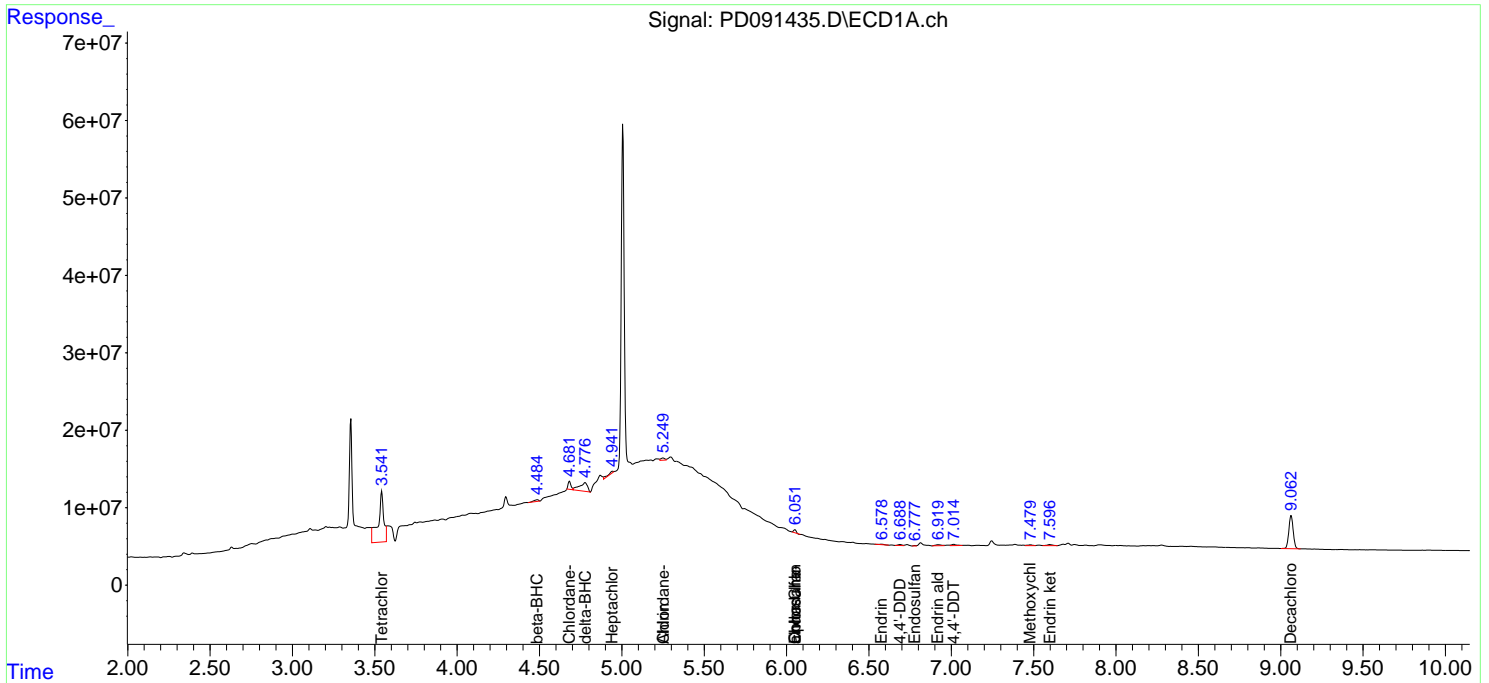
(f)=RT Delta > 1/2 Window (#)=Amounts differ by > 25% (m)=manual int.

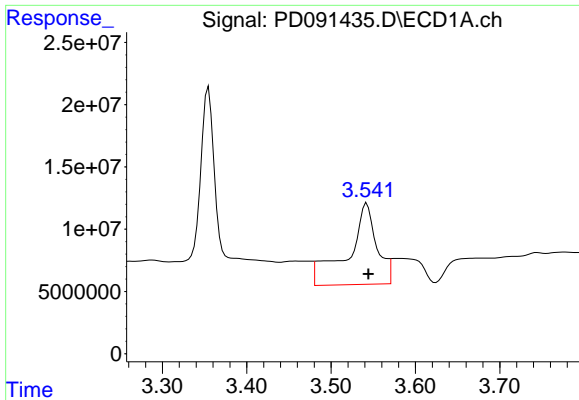
Data Path : Z:\pestpcbsrv\HPCHEM1\ECD_D\Data\PD120225\
 Data File : PD091435.D
 Signal(s) : Signal #1: ECD1A.ch Signal #2: ECD2B.ch
 Acq On : 02 Dec 2025 19:26
 Operator : AR\AJ
 Sample : Q3742-06
 Misc :
 ALS Vial : 16 Sample Multiplier: 1

Instrument :
 ECD_D
 ClientSampleId :
 SB-1125-13

Integration File signal 1: autoint1.e
 Integration File signal 2: autoint2.e
 Quant Time: Dec 03 01:11:03 2025
 Quant Method : Z:\pestpcbsrv\HPCHEM1\ECD_D\Method\PD111525.M
 Quant Title : GC Extractables
 QLast Update : Sat Nov 15 04:46:13 2025
 Response via : Initial Calibration
 Integrator: ChemStation

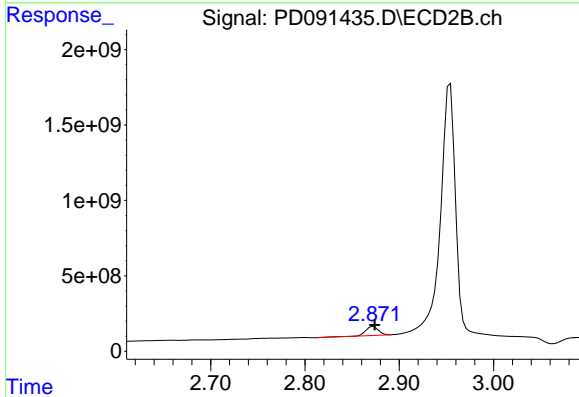
Volume Inj. : 1 µl
 Signal #1 Phase : ZB-MR1 Signal #2 Phase: ZB-MR2
 Signal #1 Info : 30M x 0.32mm x0.5 Signal #2 Info : 30M x 0.32mm x 0.25µm



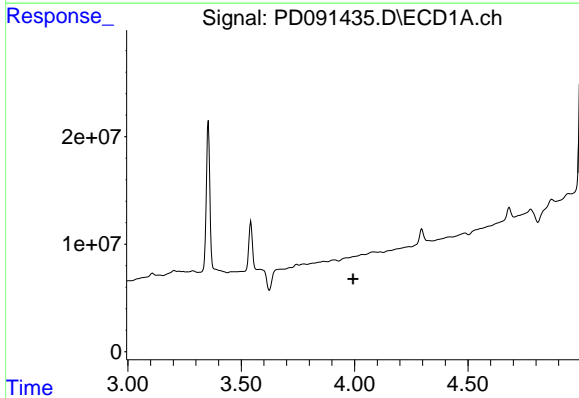


#1 Tetrachloro-m-xylene
 R.T.: 3.542 min
 Delta R.T.: -0.002 min
 Response: 155833010
 Conc: 45.19 ng/ml

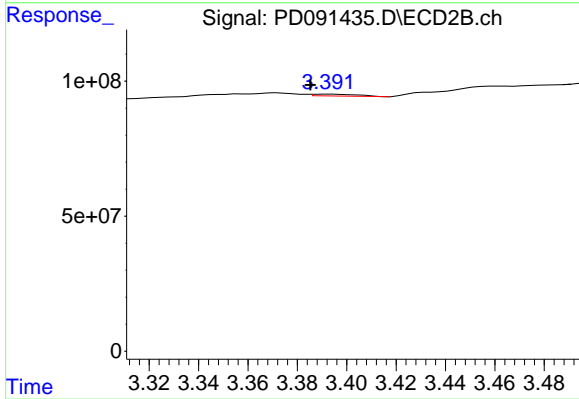
Instrument :
 ECD_D
 ClientSampleId :
 SB-1125-13



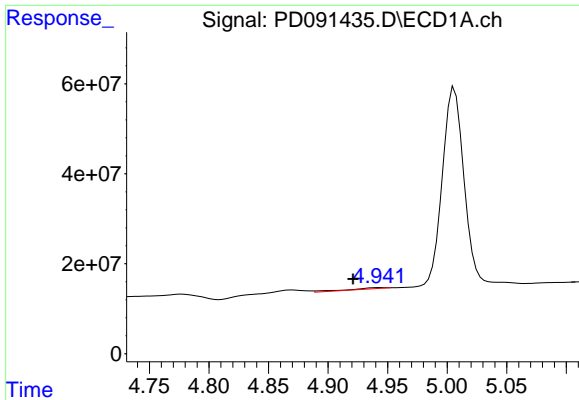
#1 Tetrachloro-m-xylene
 R.T.: 2.872 min
 Delta R.T.: -0.002 min
 Response: 554060756
 Conc: 15.13 ng/ml



#2 alpha-BHC
 R.T.: 0.000 min
 Exp R.T. : 3.993 min
 Response: 0
 Conc: N.D.



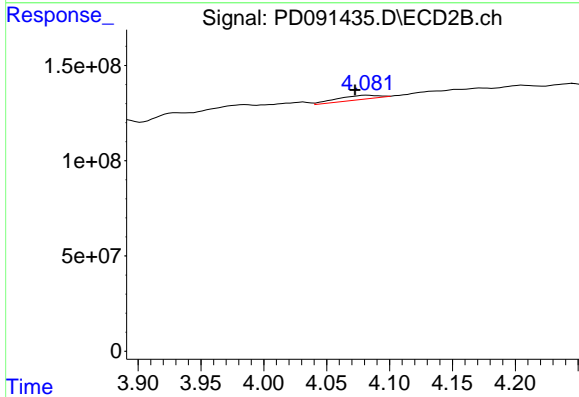
#2 alpha-BHC
 R.T.: 3.393 min
 Delta R.T.: 0.008 min
 Response: 8782805
 Conc: 0.14 ng/ml



#4 Heptachlor

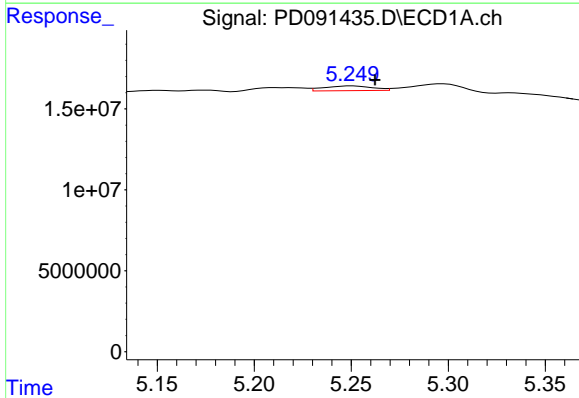
R.T.: 4.943 min
 Delta R.T.: 0.022 min
 Response: 5260582
 Conc: 0.73 ng/ml

Instrument :
 ECD_D
 ClientSampleId :
 SB-1125-13



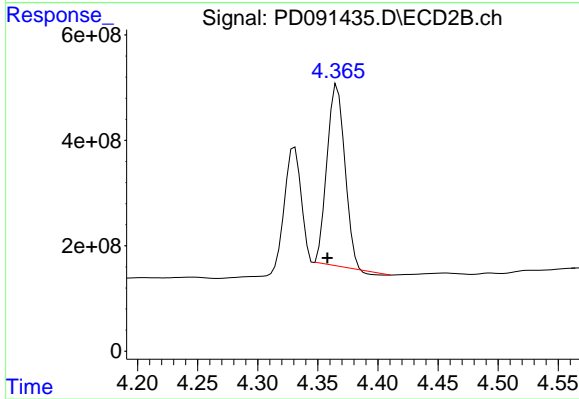
#4 Heptachlor

R.T.: 4.082 min
 Delta R.T.: 0.009 min
 Response: 49357629
 Conc: 0.89 ng/ml



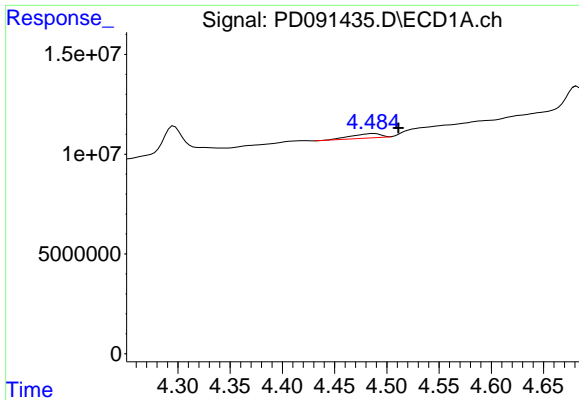
#5 Aldrin

R.T.: 5.250 min
 Delta R.T.: -0.012 min
 Response: 5096643
 Conc: 0.70 ng/ml



#5 Aldrin

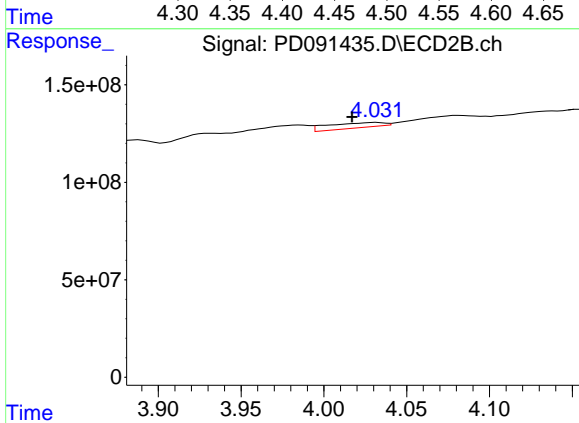
R.T.: 4.366 min
 Delta R.T.: 0.008 min
 Response: 3449869846
 Conc: 61.10 ng/ml



#6 beta-BHC

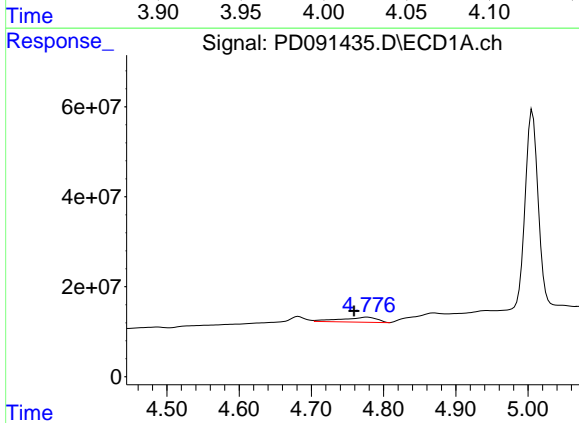
R.T.: 4.487 min
 Delta R.T.: -0.024 min
 Response: 4214788
 Conc: 1.45 ng/ml

Instrument :
 ECD_D
 ClientSampleId :
 SB-1125-13



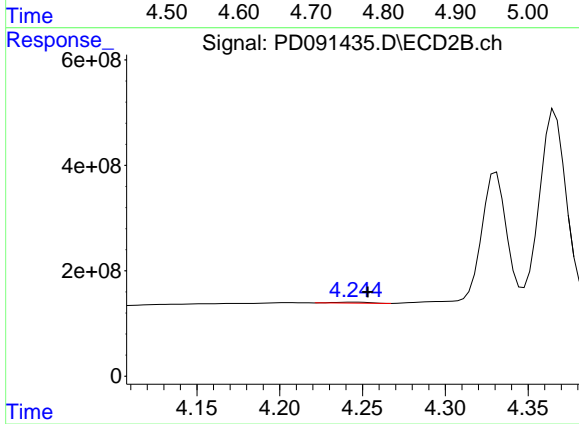
#6 beta-BHC

R.T.: 4.032 min
 Delta R.T.: 0.015 min
 Response: 60723508
 Conc: 2.53 ng/ml



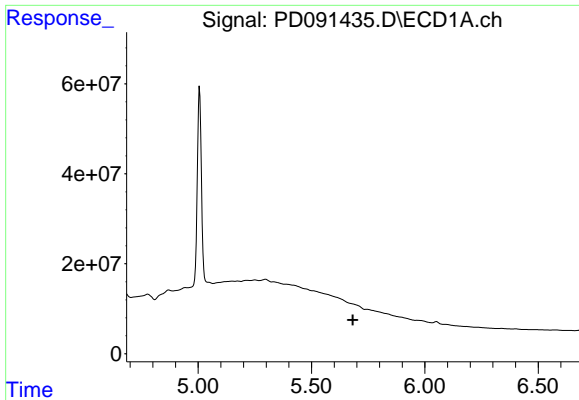
#7 delta-BHC

R.T.: 4.777 min
 Delta R.T.: 0.018 min
 Response: 37603589
 Conc: 5.06 ng/ml



#7 delta-BHC

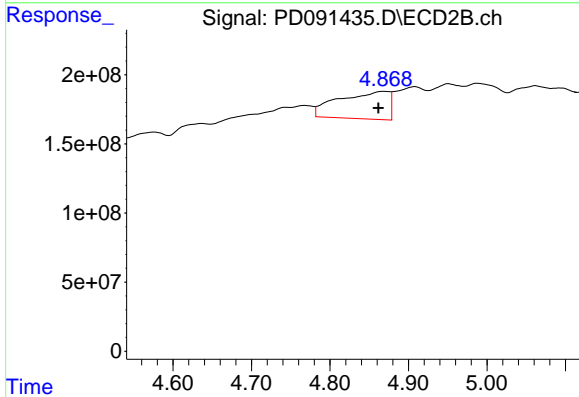
R.T.: 4.246 min
 Delta R.T.: -0.007 min
 Response: 27129928
 Conc: 0.46 ng/ml



#8 Heptachlor epoxide

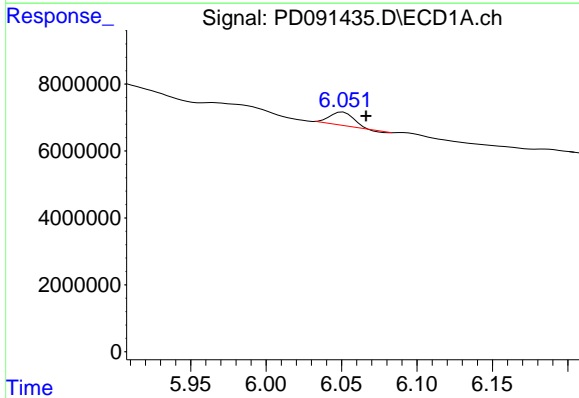
R.T.: 0.000 min
 Exp R.T.: 5.683 min
 Response: 0
 Conc: N.D.

Instrument :
 ECD_D
 ClientSampleId :
 SB-1125-13



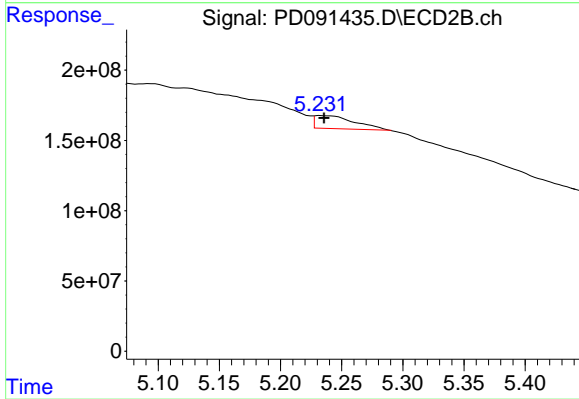
#8 Heptachlor epoxide

R.T.: 4.869 min
 Delta R.T.: 0.007 min
 Response: 885226114
 Conc: 17.37 ng/ml



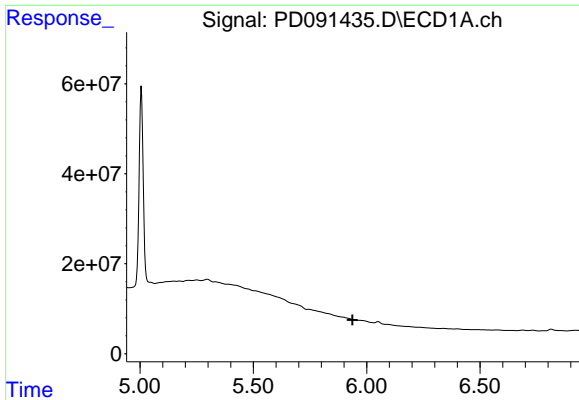
#9 Endosulfan I

R.T.: 6.051 min
 Delta R.T.: -0.015 min
 Response: 4316995
 Conc: 0.70 ng/ml



#9 Endosulfan I

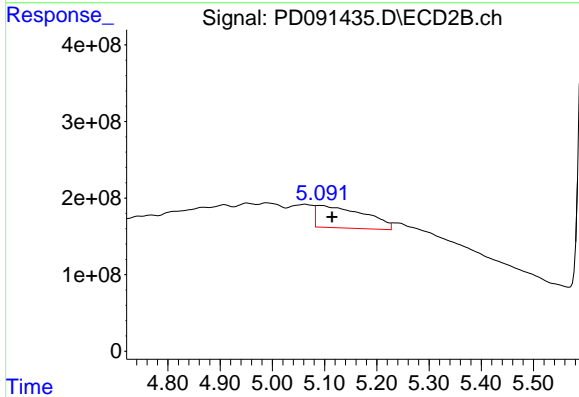
R.T.: 5.233 min
 Delta R.T.: -0.003 min
 Response: 199354450
 Conc: 4.17 ng/ml



#10 gamma-Chlordane

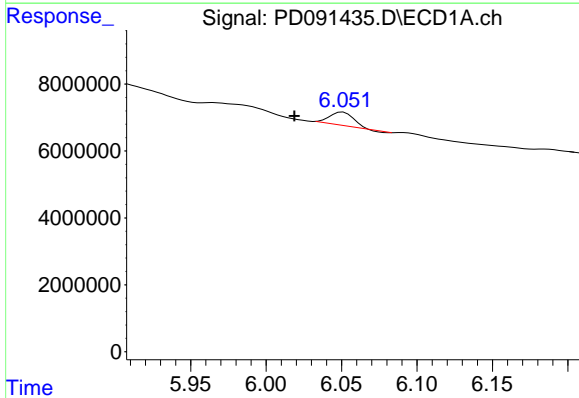
R.T.: 0.000 min
 Exp R.T.: 5.938 min
 Response: 0
 Conc: N.D.

Instrument :
 ECD_D
 ClientSampleId :
 SB-1125-13



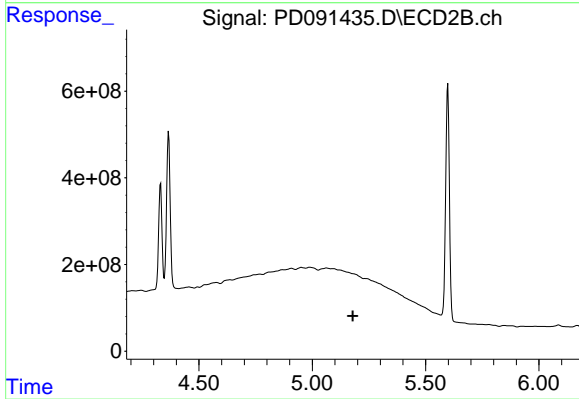
#10 gamma-Chlordane

R.T.: 5.093 min
 Delta R.T.: -0.022 min
 Response: 1843778394
 Conc: 33.75 ng/ml



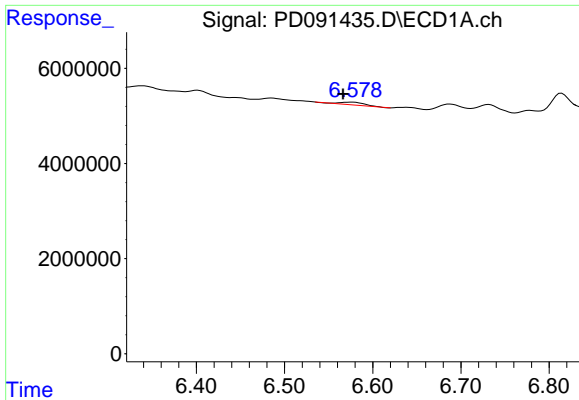
#11 alpha-Chlordane

R.T.: 6.051 min
 Delta R.T.: 0.032 min
 Response: 4316995
 Conc: 0.63 ng/ml



#11 alpha-Chlordane

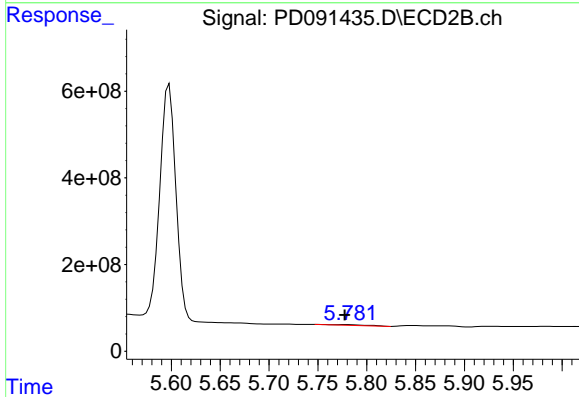
R.T.: 0.000 min
 Exp R.T.: 5.179 min
 Response: 0
 Conc: N.D.



#14 Endrin

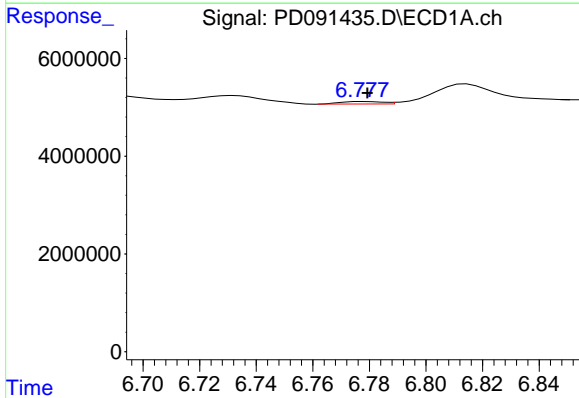
R.T.: 6.577 min
 Delta R.T.: 0.011 min
 Response: 1220597
 Conc: 0.25 ng/ml

Instrument :
 ECD_D
 ClientSampleId :
 SB-1125-13



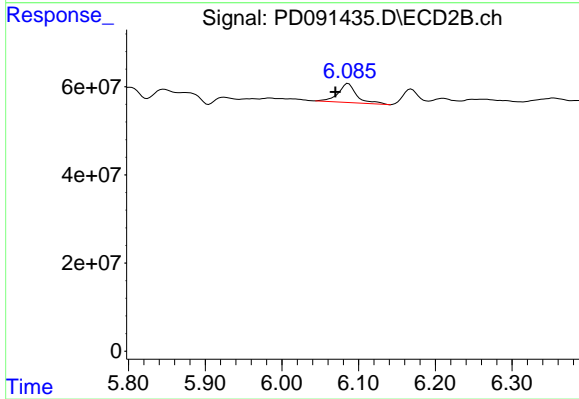
#14 Endrin

R.T.: 5.779 min
 Delta R.T.: 0.002 min
 Response: 39949422
 Conc: 0.88 ng/ml



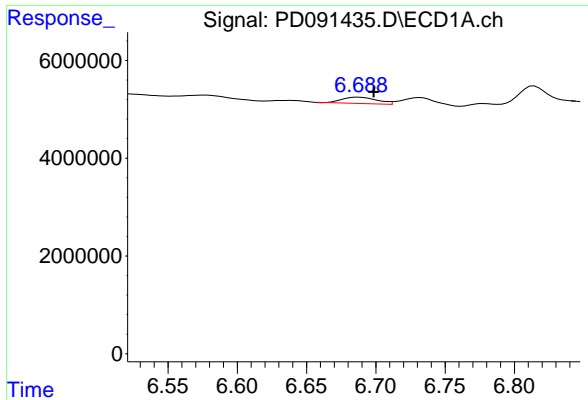
#15 Endosulfan II

R.T.: 6.778 min
 Delta R.T.: -0.001 min
 Response: 533444
 Conc: 0.10 ng/ml



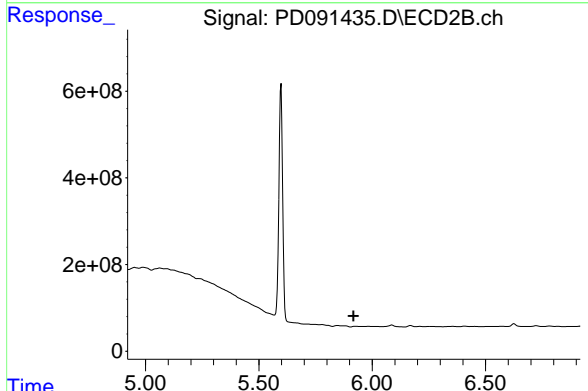
#15 Endosulfan II

R.T.: 6.087 min
 Delta R.T.: 0.017 min
 Response: 73343930
 Conc: 1.57 ng/ml

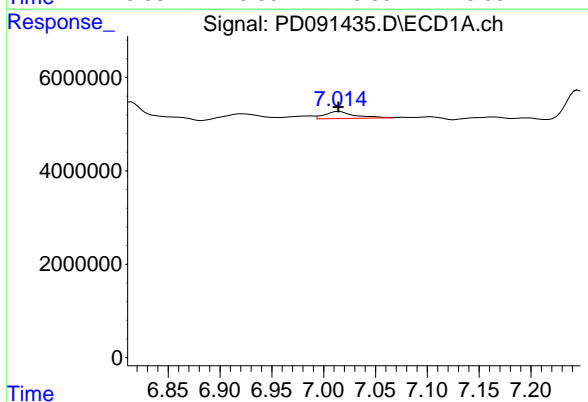


#16 4,4'-DDD
 R.T.: 6.688 min
 Delta R.T.: -0.011 min
 Response: 2243878
 Conc: 0.46 ng/ml

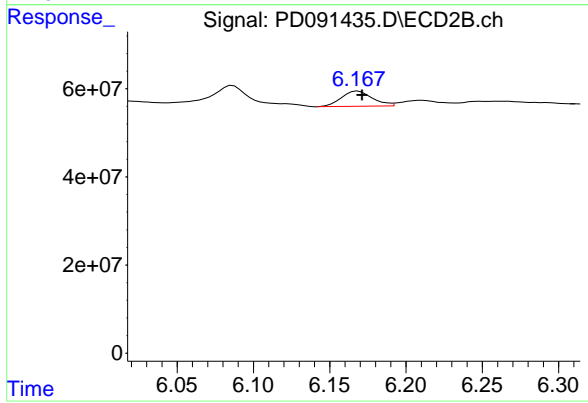
Instrument : ECD_D
 ClientSampleId : SB-1125-13



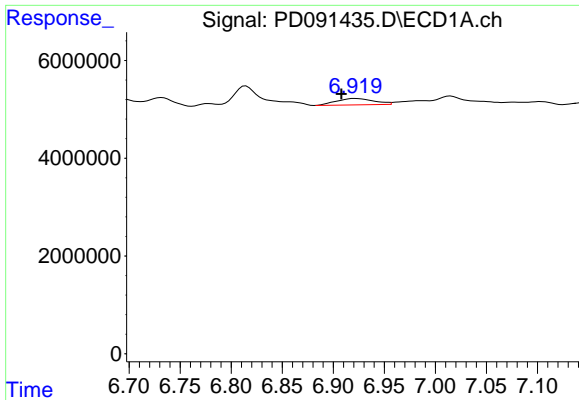
#16 4,4'-DDD
 R.T.: 5.925 min
 Delta R.T.: 0.007 min
 Response: -21020860
 Conc: N.D.



#17 4,4'-DDT
 R.T.: 7.015 min
 Delta R.T.: 0.000 min
 Response: 2932321
 Conc: 0.71 ng/ml



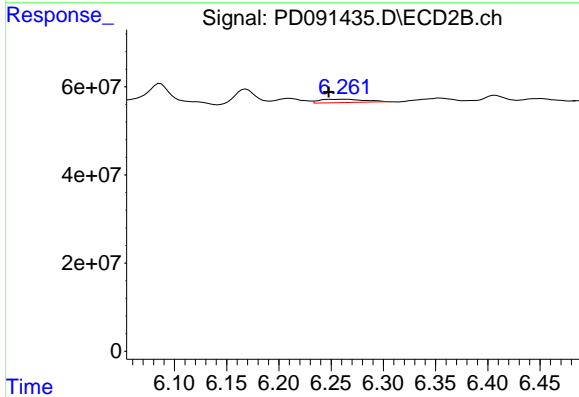
#17 4,4'-DDT
 R.T.: 6.169 min
 Delta R.T.: -0.003 min
 Response: 48644358
 Conc: 1.24 ng/ml



#18 Endrin aldehyde

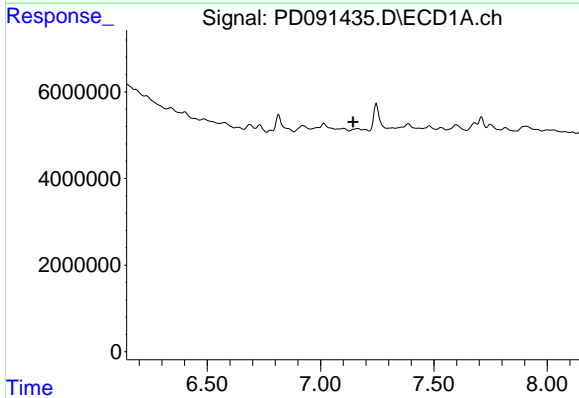
R.T.: 6.921 min
 Delta R.T.: 0.013 min
 Response: 3345161
 Conc: 0.80 ng/ml

Instrument :
 ECD_D
 ClientSampleId :
 SB-1125-13



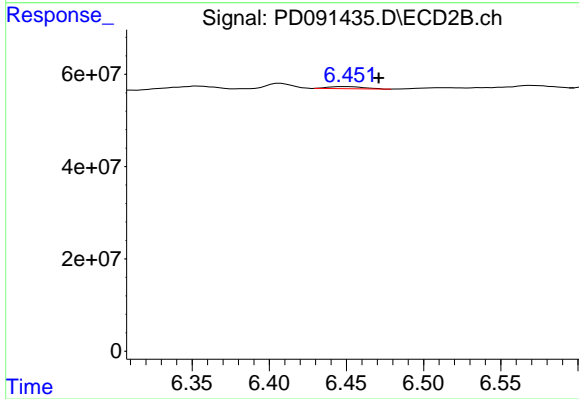
#18 Endrin aldehyde

R.T.: 6.262 min
 Delta R.T.: 0.014 min
 Response: 21506347
 Conc: 0.61 ng/ml



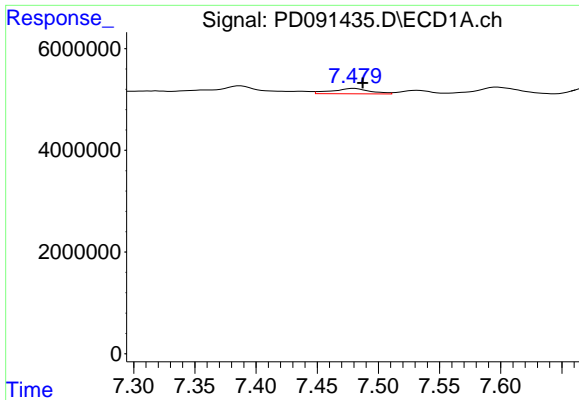
#19 Endosulfan Sulfate

R.T.: 7.164 min
 Delta R.T.: 0.021 min
 Response: -284319
 Conc: N.D.



#19 Endosulfan Sulfate

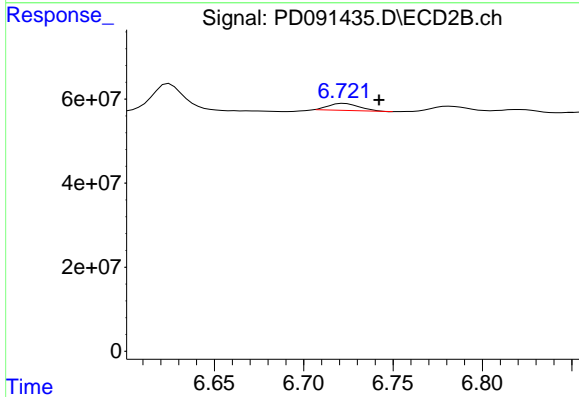
R.T.: 6.451 min
 Delta R.T.: -0.020 min
 Response: 7404888
 Conc: 0.17 ng/ml



#20 Methoxychlor

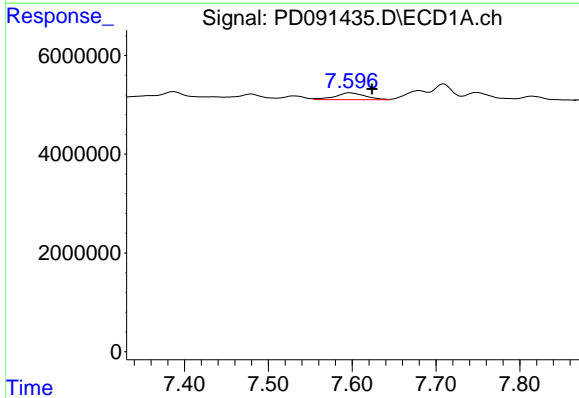
R.T.: 7.480 min
 Delta R.T.: -0.007 min
 Response: 2279204
 Conc: 1.05 ng/ml

Instrument :
 ECD_D
 ClientSampleId :
 SB-1125-13



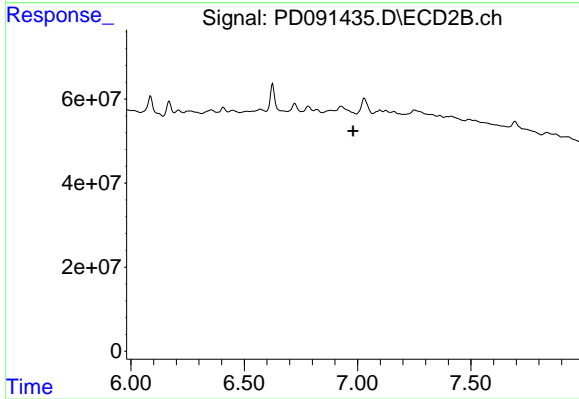
#20 Methoxychlor

R.T.: 6.723 min
 Delta R.T.: -0.020 min
 Response: 20014690
 Conc: 1.00 ng/ml



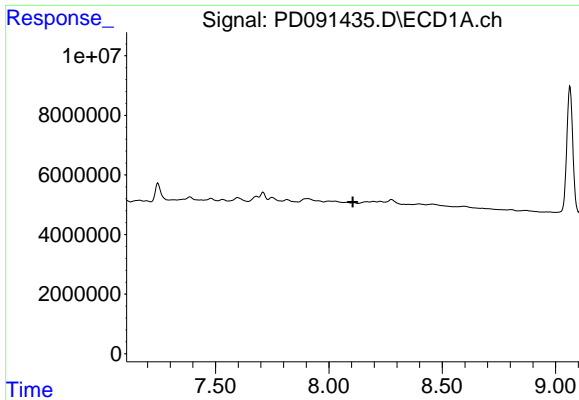
#21 Endrin ketone

R.T.: 7.597 min
 Delta R.T.: -0.026 min
 Response: 3467219
 Conc: 0.62 ng/ml



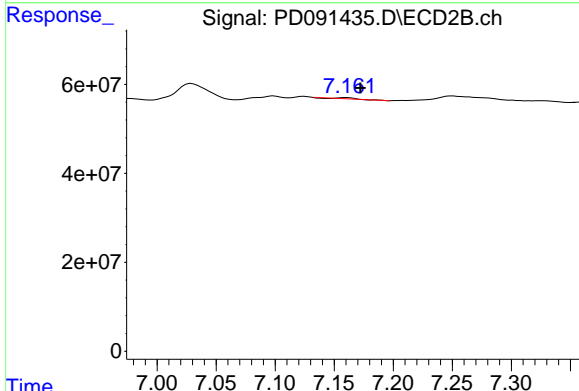
#21 Endrin ketone

R.T.: 0.000 min
 Exp R.T. : 6.980 min
 Response: 0
 Conc: N.D.

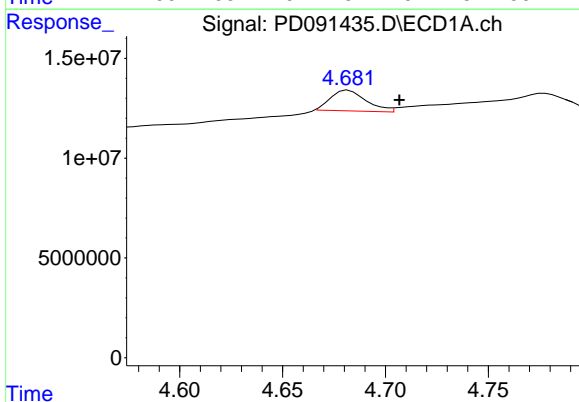


#22 Mirex
 R.T.: 0.000 min
 Exp R.T.: 8.106 min
 Response: 0
 Conc: N.D.

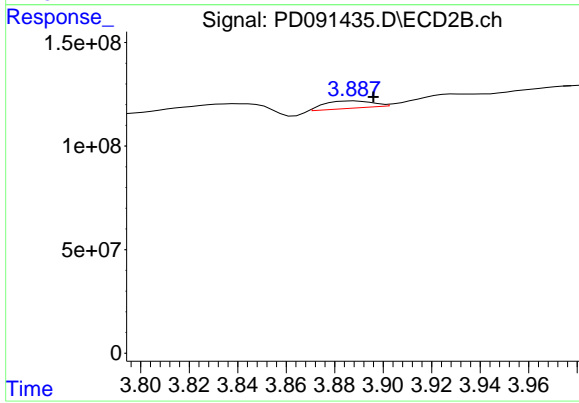
Instrument : ECD_D
 ClientSampleId : SB-1125-13



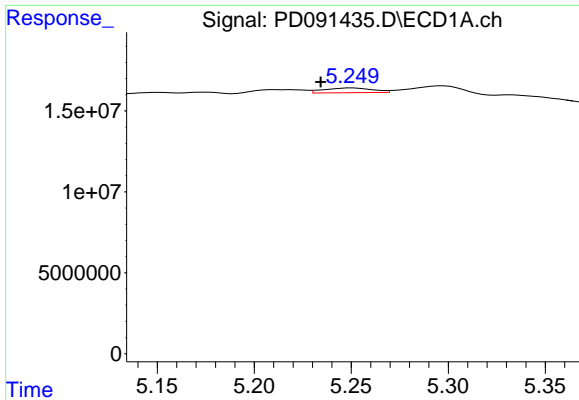
#22 Mirex
 R.T.: 7.161 min
 Delta R.T.: -0.011 min
 Response: 1510996
 Conc: 0.05 ng/ml



#23 Chlordane-1
 R.T.: 4.682 min
 Delta R.T.: -0.025 min
 Response: 12499343
 Conc: 50.80 ng/ml



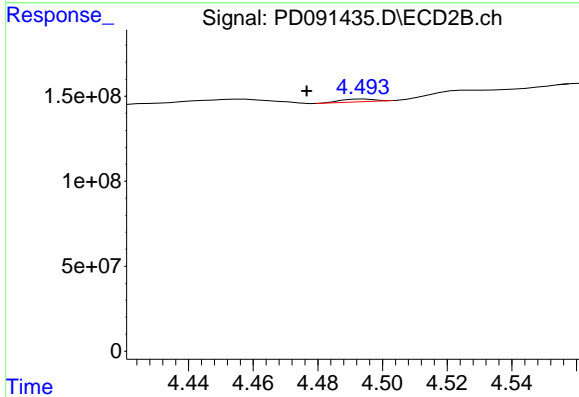
#23 Chlordane-1
 R.T.: 3.888 min
 Delta R.T.: -0.008 min
 Response: 47427932
 Conc: 27.57 ng/ml



#24 Chlordane-2

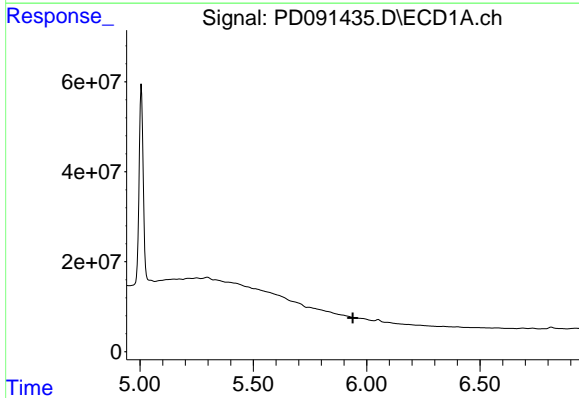
R.T.: 5.250 min
 Delta R.T.: 0.016 min
 Response: 5096643
 Conc: 20.64 ng/ml

Instrument :
 ECD_D
 ClientSampleId :
 SB-1125-13



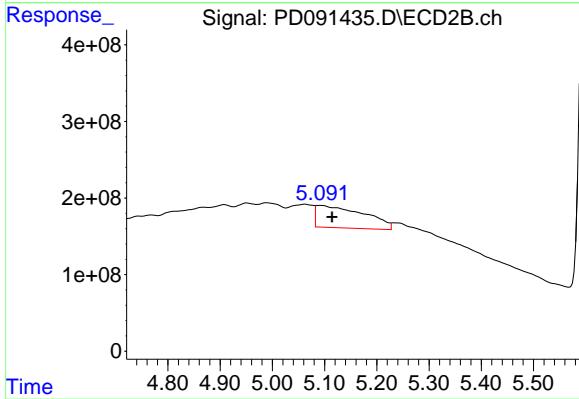
#24 Chlordane-2

R.T.: 4.494 min
 Delta R.T.: 0.018 min
 Response: 11440662
 Conc: 6.53 ng/ml



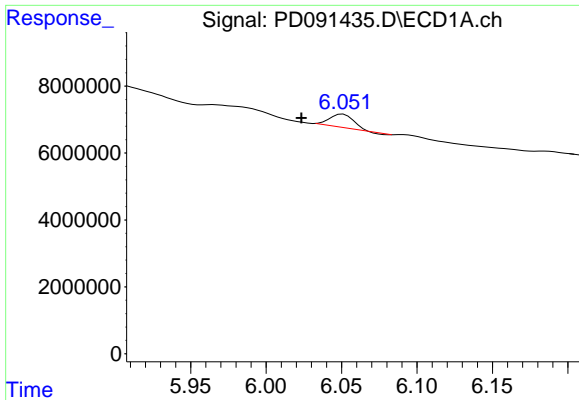
#25 Chlordane-3

R.T.: 0.000 min
 Exp R.T. : 5.939 min
 Response: 0
 Conc: N.D.



#25 Chlordane-3

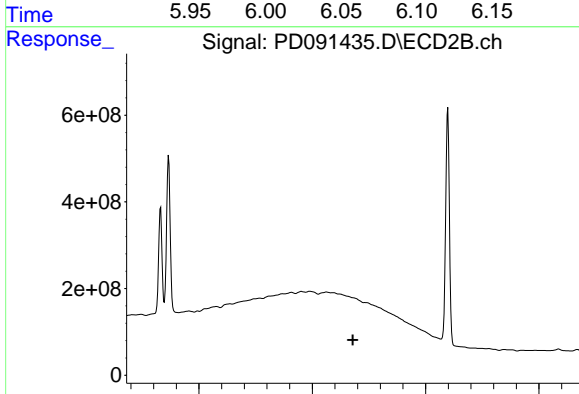
R.T.: 5.093 min
 Delta R.T.: -0.022 min
 Response: 1843778394
 Conc: 320.46 ng/ml



#26 Chlordane-4

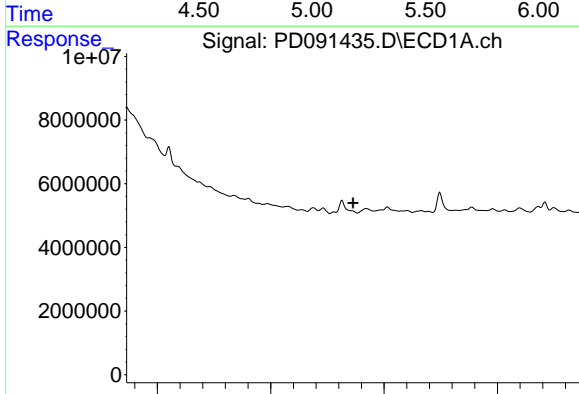
R.T.: 6.051 min
 Delta R.T.: 0.027 min
 Response: 4316995
 Conc: 3.59 ng/ml

Instrument :
 ECD_D
 ClientSampleId :
 SB-1125-13



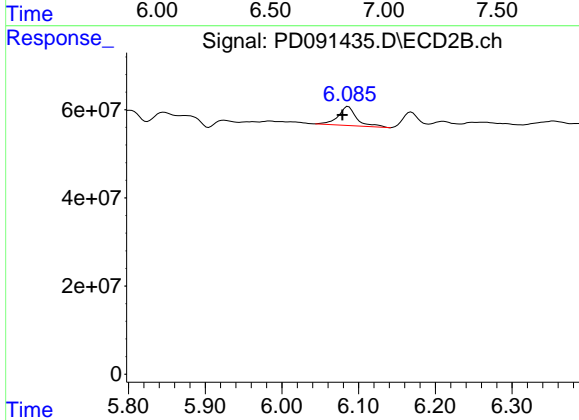
#26 Chlordane-4

R.T.: 0.000 min
 Exp R.T. : 5.179 min
 Response: 0
 Conc: N.D.



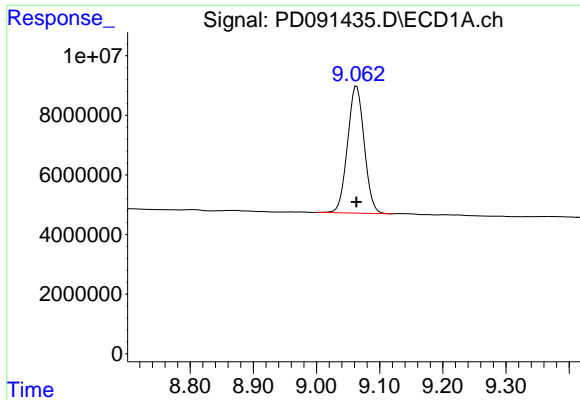
#27 Chlordane-5

R.T.: 0.000 min
 Exp R.T. : 6.863 min
 Response: 0
 Conc: N.D.



#27 Chlordane-5

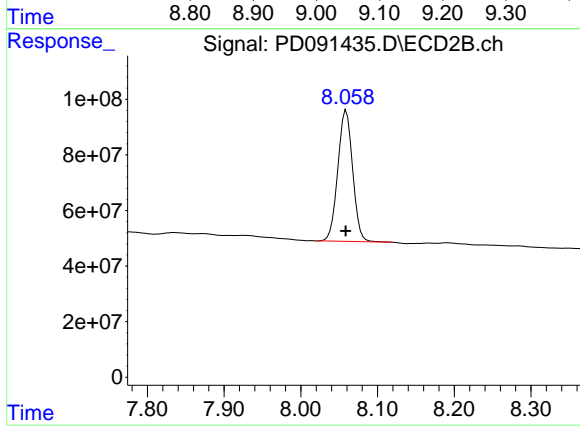
R.T.: 6.087 min
 Delta R.T.: 0.008 min
 Response: 73343930
 Conc: 36.14 ng/ml



#28 Decachlorobiphenyl

R.T.: 9.064 min
 Delta R.T.: 0.000 min
 Response: 78110422
 Conc: 15.68 ng/ml

Instrument :
 ECD_D
 ClientSampleId :
 SB-1125-13



#28 Decachlorobiphenyl

R.T.: 8.059 min
 Delta R.T.: 0.000 min
 Response: 633869627
 Conc: 16.02 ng/ml