

Data Path : Z:\pestpcbsrv\HPCHEM1\ECD_D\Data\PD120225\
 Data File : PD091436.D
 Signal(s) : Signal #1: ECD1A.ch Signal #2: ECD2B.ch
 Acq On : 02 Dec 2025 19:39
 Operator : AR\AJ
 Sample : Q3742-07
 Misc :
 ALS Vial : 17 Sample Multiplier: 1

Instrument :
 ECD_D
 ClientSampleId :
 SB-1125-18

Integration File signal 1: autoint1.e
 Integration File signal 2: autoint2.e
 Quant Time: Dec 03 01:11:12 2025
 Quant Method : Z:\pestpcbsrv\HPCHEM1\ECD_D\Method\PD111525.M
 Quant Title : GC Extractables
 QLast Update : Sat Nov 15 04:46:13 2025
 Response via : Initial Calibration
 Integrator: ChemStation

Volume Inj. : 1 µl
 Signal #1 Phase : ZB-MR2 Signal #2 Phase: ZB-MR2
 Signal #1 Info : 30M x 0.32mm x0.5 Signal #2 Info : 30M x 0.32mm x 0.25µm

	Compound	RT#1	RT#2	Resp#1	Resp#2	ng/ml	ng/ml

System Monitoring Compounds							
1)	SA Tetrachlo...	3.542	2.872	98499693	690.0E6	28.562	18.837 #
28)	SA Decachlor...	9.065	8.058	89567253	565.0E6	17.979	14.276
Target Compounds							
2)	A alpha-BHC	0.000	3.369f	0	14501163	N.D.	0.229 #
4)	MA Heptachlor	4.938f	4.088f	4155502	14644567	0.580	0.265 #
5)	MB Aldrin	5.254	4.358	3020975	41596315	0.416	0.737 #
6)	B beta-BHC	4.488f	4.037f	833019	28154569	0.287	1.172 #
7)	B delta-BHC	4.771	4.262	11621436	16338647	1.564	0.279 #
8)	B Heptachlo...	5.679	4.850	2550745	30495542	0.393	0.598 #
9)	A Endosulfan I	6.054	5.251f	959272	52847001	0.156	1.104 #
10)	B gamma-Chl...	5.905f	5.135f	2143601	134.8E6	0.330	2.468 #
11)	B alpha-Chl...	5.993f	5.194	5680176	114.1E6	0.825	2.180 #
12)	B 4,4'-DDE	0.000	5.392f	0	24397964	N.D.	0.457 #
13)	MA Dieldrin	0.000	5.502	0	80212660	N.D.	1.477 #
14)	MA Endrin	6.566	5.777	1201929	19468236	0.242	0.431 #
15)	B Endosulfa...	6.803f	6.066	1934273	51882825	0.348	1.111 #
16)	A 4,4'-DDD	6.687	5.933f	1918750	-7018755	0.391	N.D. #
17)	MA 4,4'-DDT	6.984f	6.167	3090219	40879472	0.747	1.045 #
18)	B Endrin al...	6.931f	6.245	4643883	30275801	1.115	0.858
19)	B Endosulfa...	7.143	6.468	730332	27555449	0.142	0.615 #
20)	A Methoxychlor	0.000	6.723f	0	19589542	N.D.	0.977 #
21)	B Endrin ke...	7.608f	6.957f	3020661	16211805	0.536	0.318 #
22)	Mirex	0.000	7.174	0	9977197	N.D.	0.301 #
23)	Chlordane-1	4.712	3.881	3277553	10644880	13.320	6.188 #
24)	Chlordane-2	5.254	4.494	3020975	6372136	12.234	3.639 #
25)	Chlordane-3	0.000	5.135	0	134.8E6	N.D.	23.435 #
26)	Chlordane-4	0.000	5.194	0	114.1E6	N.D.	23.846 #
27)	Chlordane-5	6.885f	6.066	1539130	51882825	7.790	25.568 #

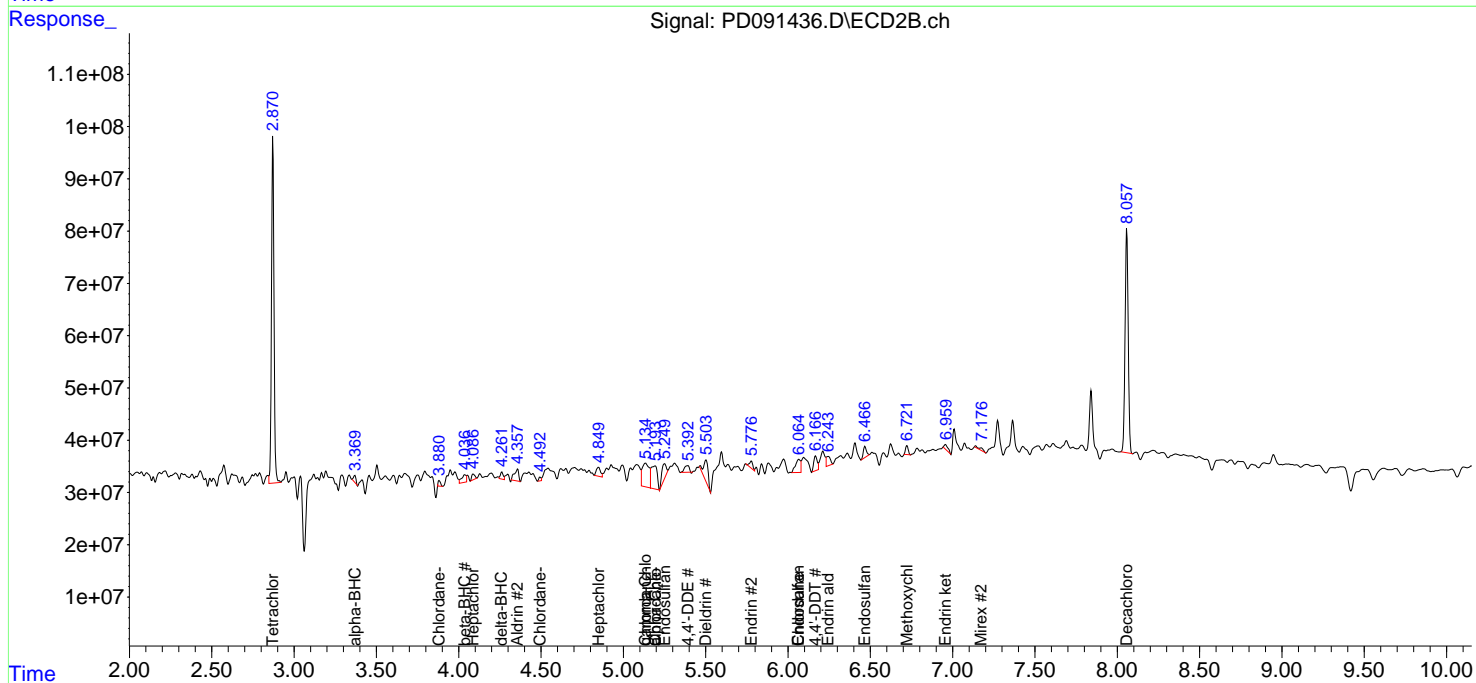
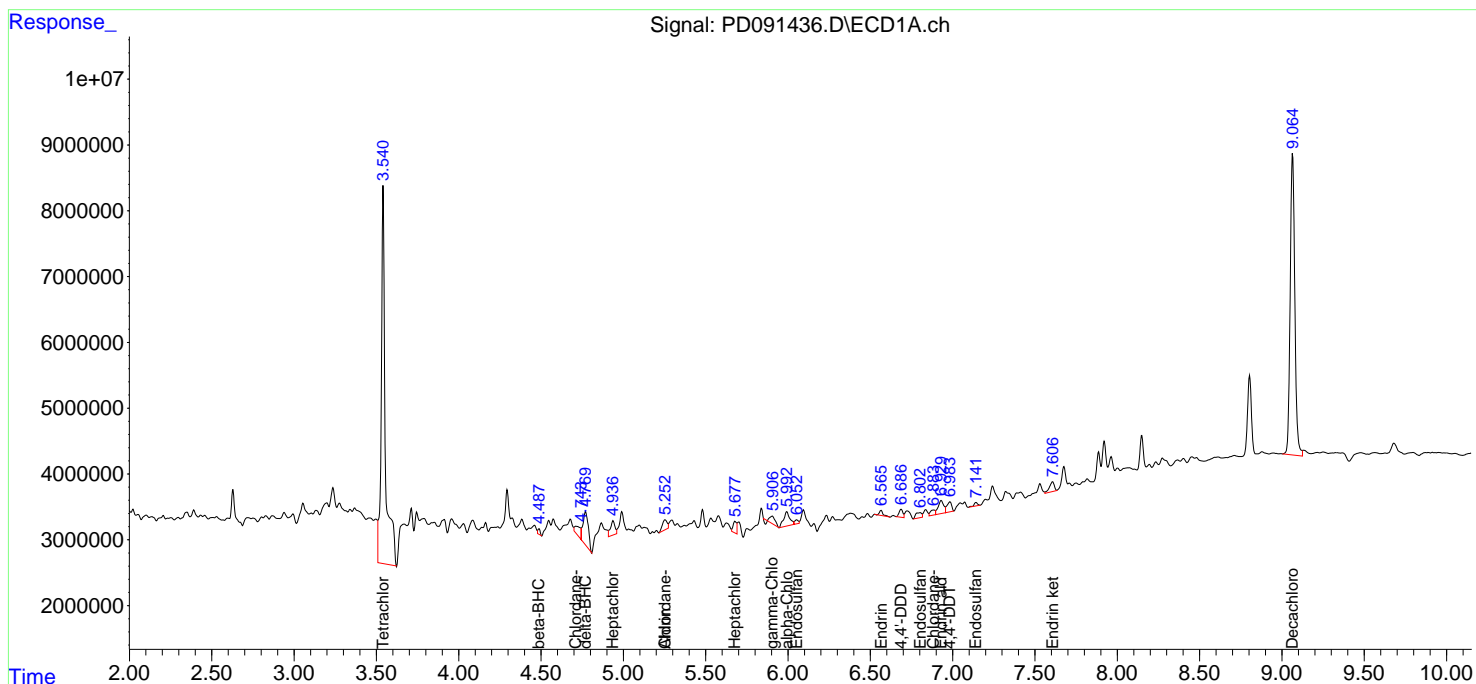
(f)=RT Delta > 1/2 Window (#)=Amounts differ by > 25% (m)=manual int.

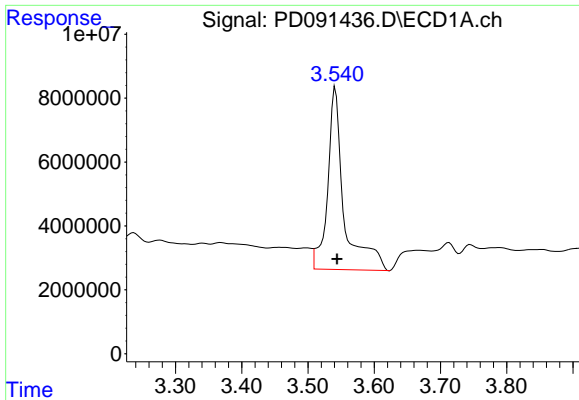
Data Path : Z:\pestpcbsrv\HPCHEM1\ECD_D\Data\PD120225\
 Data File : PD091436.D
 Signal(s) : Signal #1: ECD1A.ch Signal #2: ECD2B.ch
 Acq On : 02 Dec 2025 19:39
 Operator : AR\AJ
 Sample : Q3742-07
 Misc :
 ALS Vial : 17 Sample Multiplier: 1

Instrument :
 ECD_D
 ClientSampleId :
 SB-1125-18

Integration File signal 1: autoint1.e
 Integration File signal 2: autoint2.e
 Quant Time: Dec 03 01:11:12 2025
 Quant Method : Z:\pestpcbsrv\HPCHEM1\ECD_D\Method\PD111525.M
 Quant Title : GC Extractables
 QLast Update : Sat Nov 15 04:46:13 2025
 Response via : Initial Calibration
 Integrator: ChemStation

Volume Inj. : 1 µl
 Signal #1 Phase : ZB-MR1 Signal #2 Phase: ZB-MR2
 Signal #1 Info : 30M x 0.32mm x0.5 Signal #2 Info : 30M x 0.32mm x 0.25µm

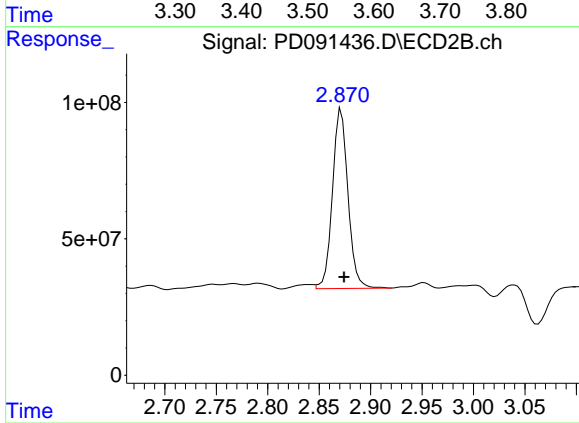




#1 Tetrachloro-m-xylene

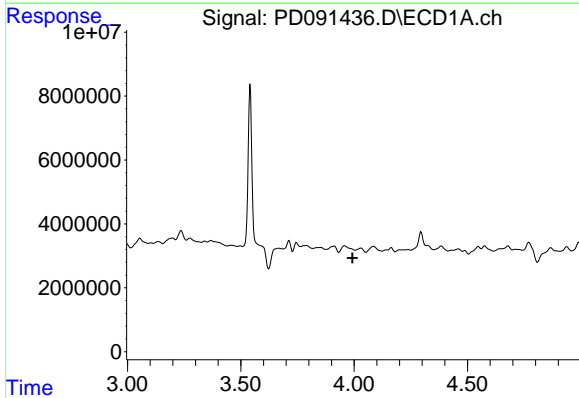
R.T.: 3.542 min
 Delta R.T.: -0.002 min
 Response: 98499693
 Conc: 28.56 ng/ml

Instrument :
 ECD_D
 ClientSampleId :
 SB-1125-18



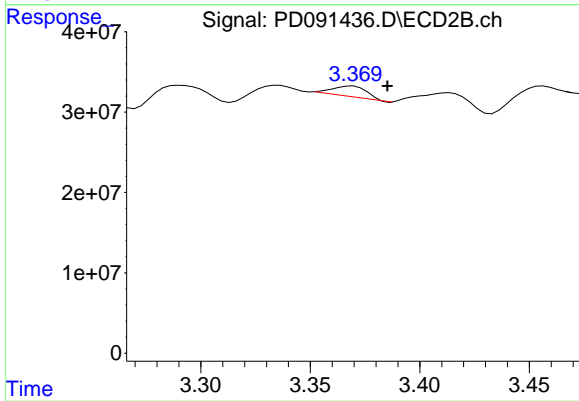
#1 Tetrachloro-m-xylene

R.T.: 2.872 min
 Delta R.T.: -0.003 min
 Response: 690007903
 Conc: 18.84 ng/ml



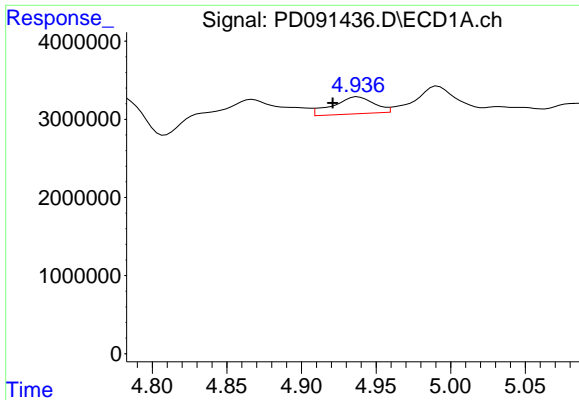
#2 alpha-BHC

R.T.: 0.000 min
 Exp R.T. : 3.993 min
 Response: 0
 Conc: N.D.



#2 alpha-BHC

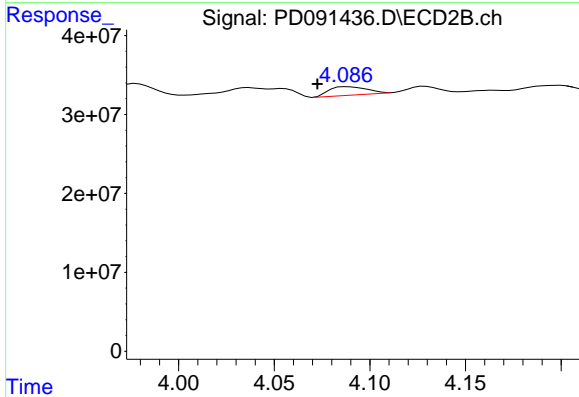
R.T.: 3.369 min
 Delta R.T.: -0.016 min
 Response: 14501163
 Conc: 0.23 ng/ml



#4 Heptachlor

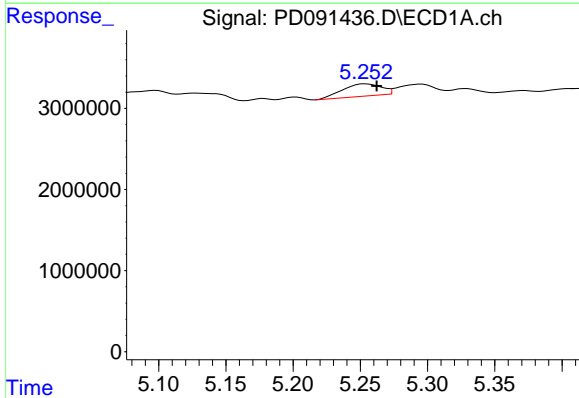
R.T.: 4.938 min
 Delta R.T.: 0.017 min
 Response: 4155502
 Conc: 0.58 ng/ml

Instrument :
 ECD_D
 ClientSampleId :
 SB-1125-18



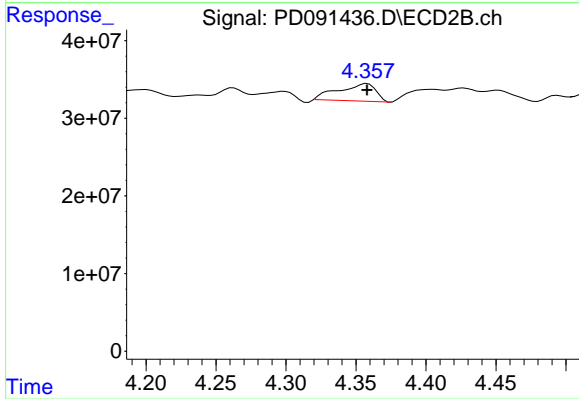
#4 Heptachlor

R.T.: 4.088 min
 Delta R.T.: 0.015 min
 Response: 14644567
 Conc: 0.27 ng/ml



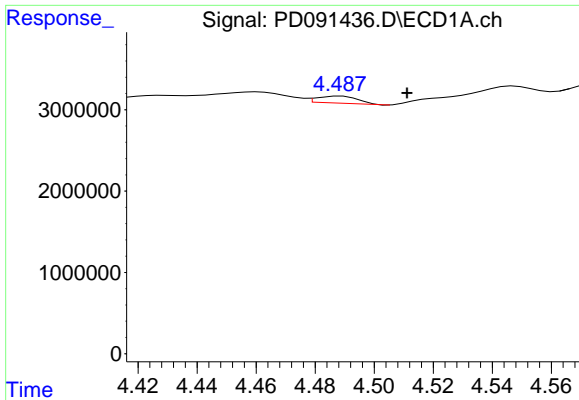
#5 Aldrin

R.T.: 5.254 min
 Delta R.T.: -0.008 min
 Response: 3020975
 Conc: 0.42 ng/ml



#5 Aldrin

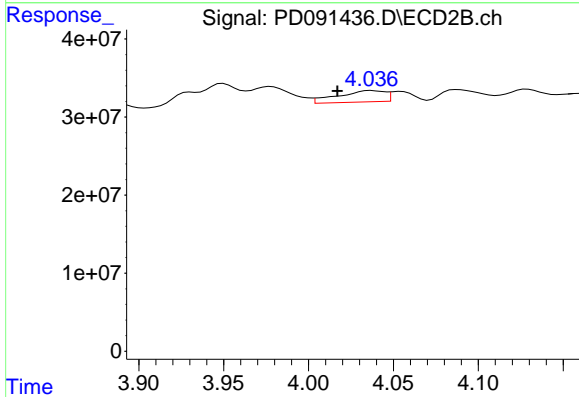
R.T.: 4.358 min
 Delta R.T.: 0.000 min
 Response: 41596315
 Conc: 0.74 ng/ml



#6 beta-BHC

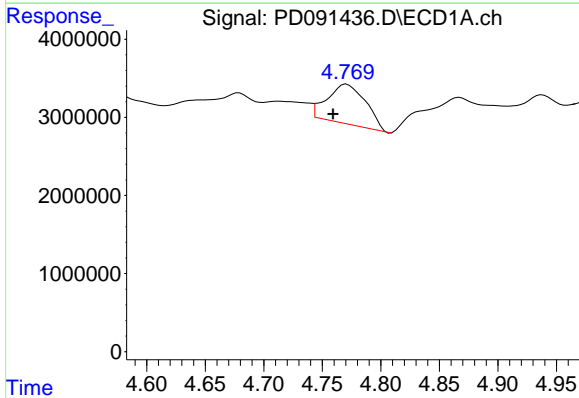
R.T.: 4.488 min
 Delta R.T.: -0.023 min
 Response: 833019
 Conc: 0.29 ng/ml

Instrument :
 ECD_D
 ClientSampleId :
 SB-1125-18



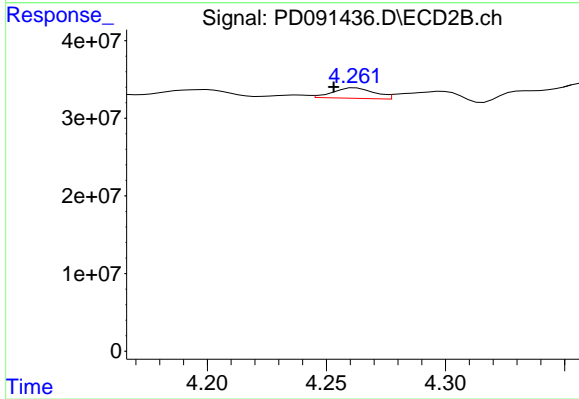
#6 beta-BHC

R.T.: 4.037 min
 Delta R.T.: 0.020 min
 Response: 28154569
 Conc: 1.17 ng/ml



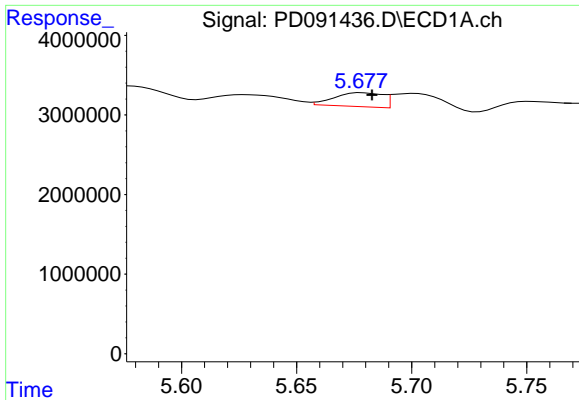
#7 delta-BHC

R.T.: 4.771 min
 Delta R.T.: 0.012 min
 Response: 11621436
 Conc: 1.56 ng/ml



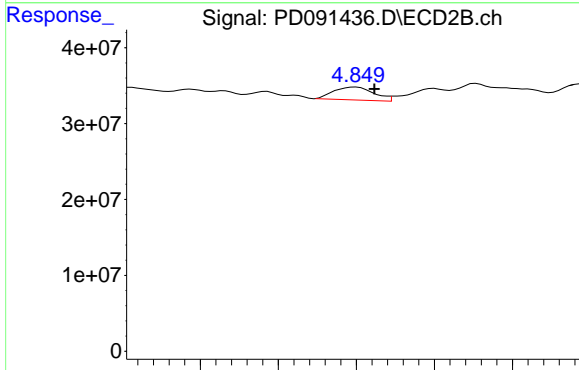
#7 delta-BHC

R.T.: 4.262 min
 Delta R.T.: 0.009 min
 Response: 16338647
 Conc: 0.28 ng/ml

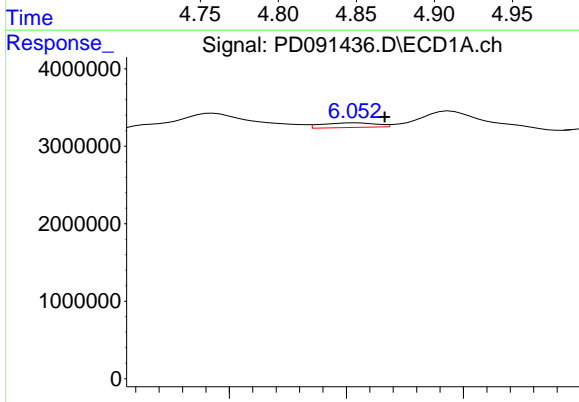


#8 Heptachlor epoxide
 R.T.: 5.679 min
 Delta R.T.: -0.004 min
 Response: 2550745
 Conc: 0.39 ng/ml

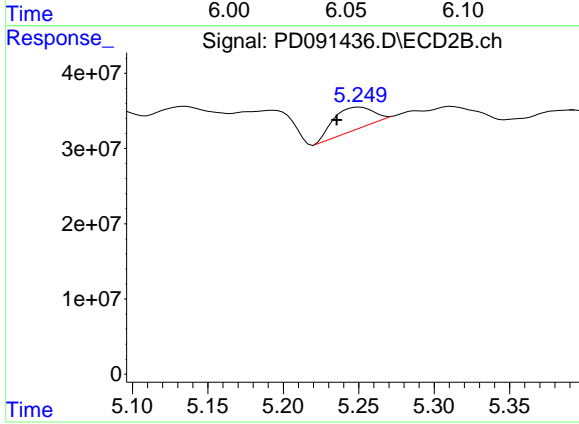
Instrument :
 ECD_D
 ClientSampleId :
 SB-1125-18



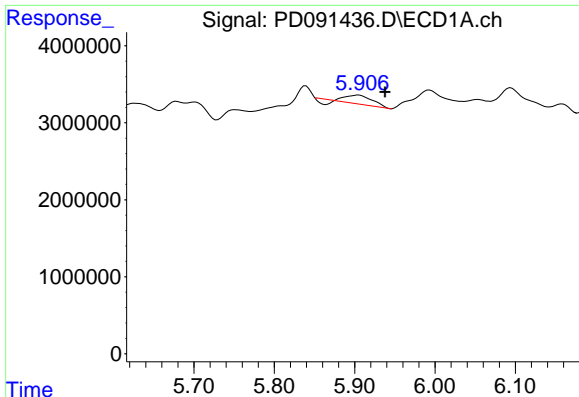
#8 Heptachlor epoxide
 R.T.: 4.850 min
 Delta R.T.: -0.012 min
 Response: 30495542
 Conc: 0.60 ng/ml



#9 Endosulfan I
 R.T.: 6.054 min
 Delta R.T.: -0.013 min
 Response: 959272
 Conc: 0.16 ng/ml



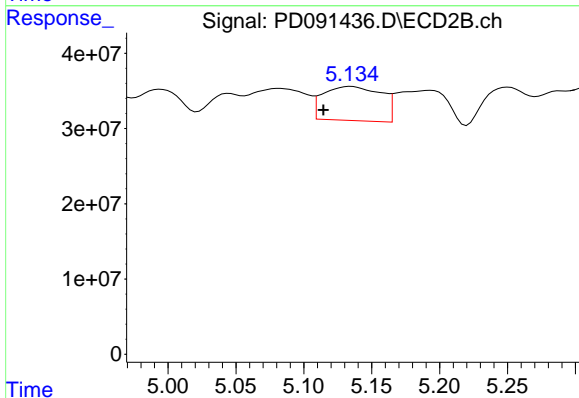
#9 Endosulfan I
 R.T.: 5.251 min
 Delta R.T.: 0.015 min
 Response: 52847001
 Conc: 1.10 ng/ml



#10 gamma-Chlordane

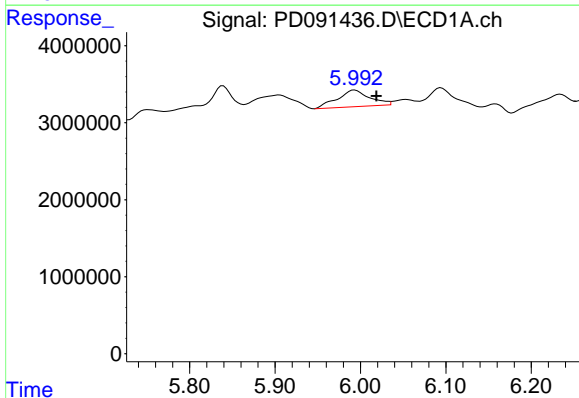
R.T.: 5.905 min
 Delta R.T.: -0.033 min
 Response: 2143601
 Conc: 0.33 ng/ml

Instrument :
 ECD_D
 ClientSampleId :
 SB-1125-18



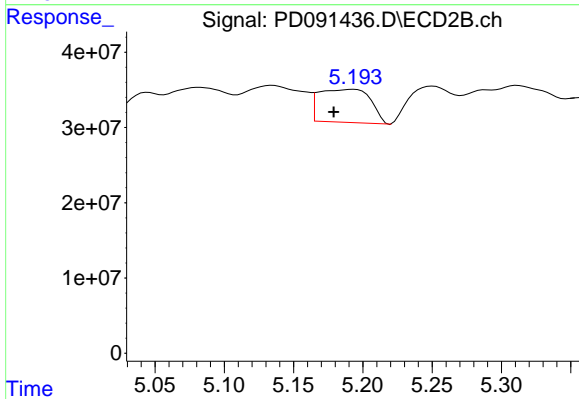
#10 gamma-Chlordane

R.T.: 5.135 min
 Delta R.T.: 0.020 min
 Response: 134834275
 Conc: 2.47 ng/ml



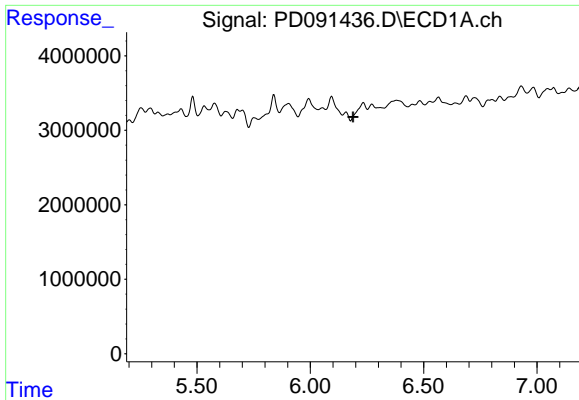
#11 alpha-Chlordane

R.T.: 5.993 min
 Delta R.T.: -0.025 min
 Response: 5680176
 Conc: 0.83 ng/ml



#11 alpha-Chlordane

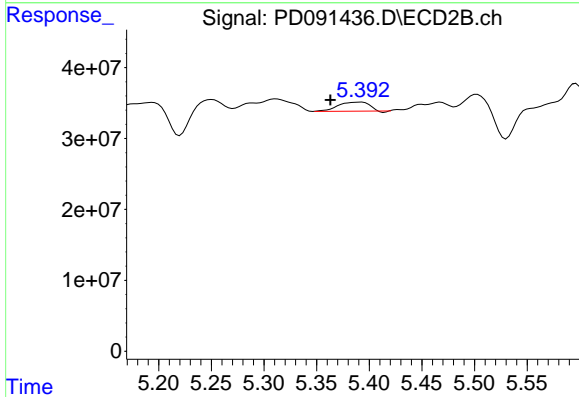
R.T.: 5.194 min
 Delta R.T.: 0.015 min
 Response: 114068324
 Conc: 2.18 ng/ml



#12 4,4'-DDE

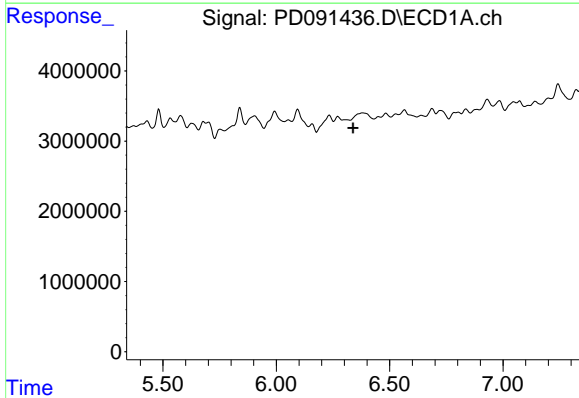
R.T.: 0.000 min
 Exp R.T.: 6.189 min
 Response: 0
 Conc: N.D.

Instrument :
 ECD_D
 ClientSampleId :
 SB-1125-18



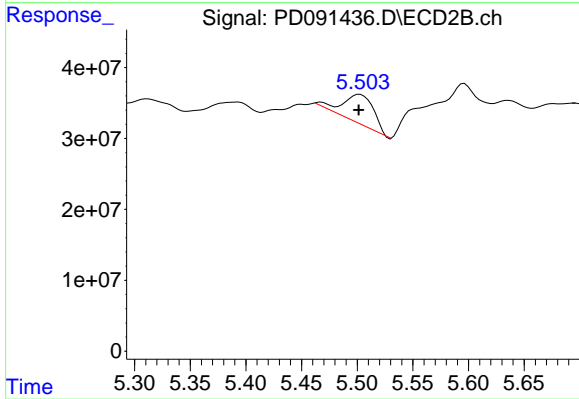
#12 4,4'-DDE

R.T.: 5.392 min
 Delta R.T.: 0.029 min
 Response: 24397964
 Conc: 0.46 ng/ml



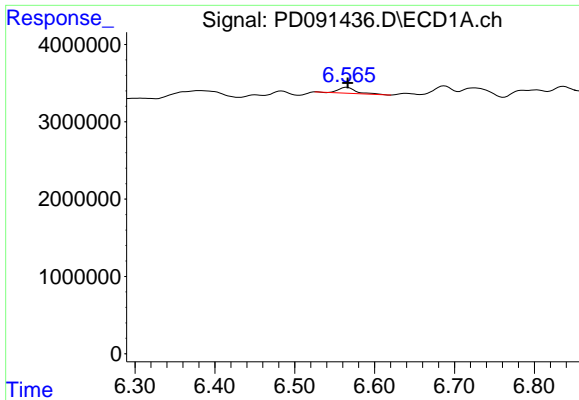
#13 Dieldrin

R.T.: 0.000 min
 Exp R.T.: 6.339 min
 Response: 0
 Conc: N.D.



#13 Dieldrin

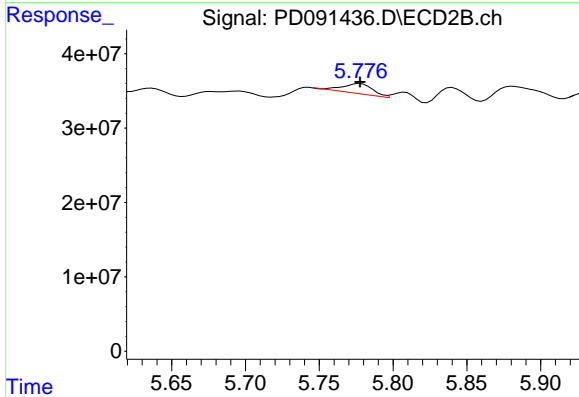
R.T.: 5.502 min
 Delta R.T.: 0.000 min
 Response: 80212660
 Conc: 1.48 ng/ml



#14 Endrin

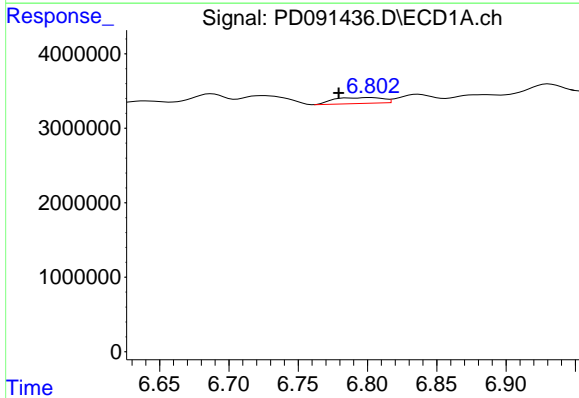
R.T.: 6.566 min
 Delta R.T.: 0.000 min
 Response: 1201929
 Conc: 0.24 ng/ml

Instrument :
 ECD_D
 ClientSampleId :
 SB-1125-18



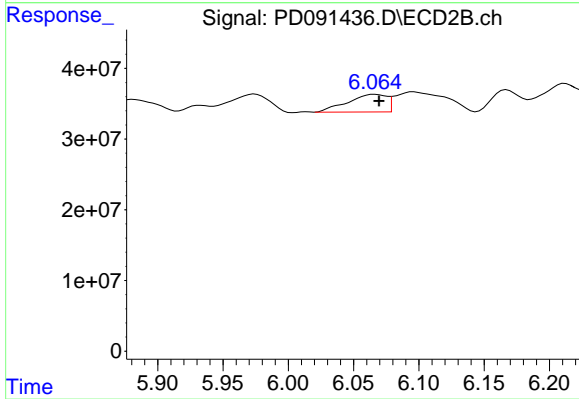
#14 Endrin

R.T.: 5.777 min
 Delta R.T.: 0.000 min
 Response: 19468236
 Conc: 0.43 ng/ml



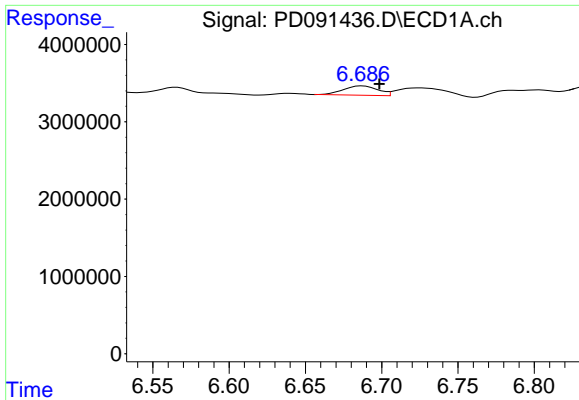
#15 Endosulfan II

R.T.: 6.803 min
 Delta R.T.: 0.024 min
 Response: 1934273
 Conc: 0.35 ng/ml



#15 Endosulfan II

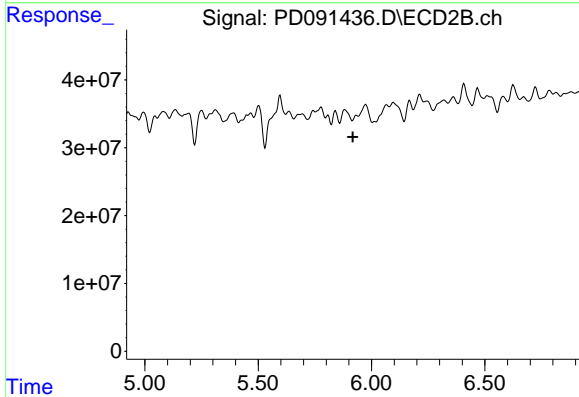
R.T.: 6.066 min
 Delta R.T.: -0.003 min
 Response: 51882825
 Conc: 1.11 ng/ml



#16 4,4'-DDD

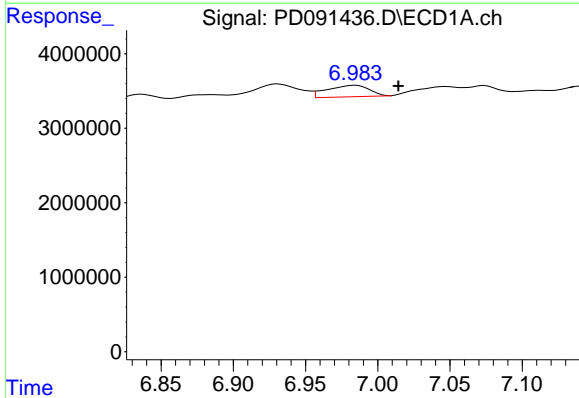
R.T.: 6.687 min
 Delta R.T.: -0.011 min
 Response: 1918750
 Conc: 0.39 ng/ml

Instrument :
 ECD_D
 ClientSampleId :
 SB-1125-18



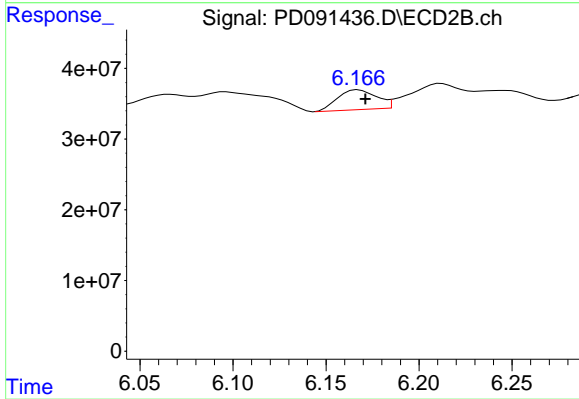
#16 4,4'-DDD

R.T.: 5.933 min
 Delta R.T.: 0.015 min
 Response: -7018755
 Conc: N.D.



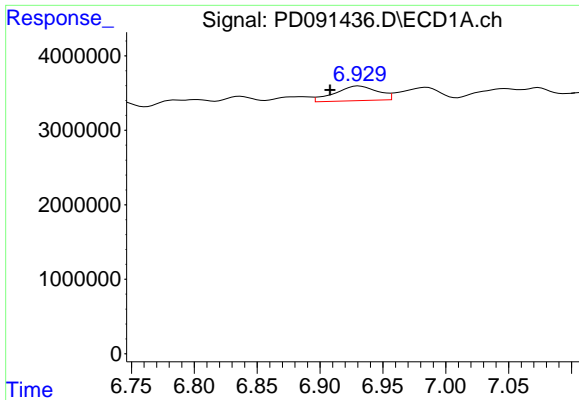
#17 4,4'-DDT

R.T.: 6.984 min
 Delta R.T.: -0.030 min
 Response: 3090219
 Conc: 0.75 ng/ml



#17 4,4'-DDT

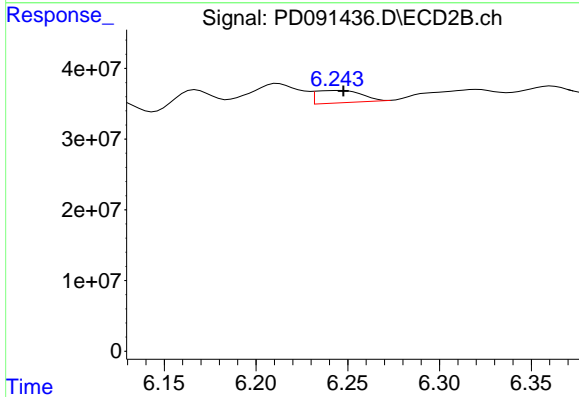
R.T.: 6.167 min
 Delta R.T.: -0.004 min
 Response: 40879472
 Conc: 1.04 ng/ml



#18 Endrin aldehyde

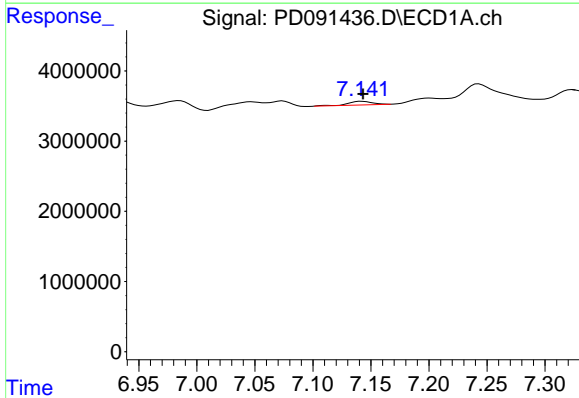
R.T.: 6.931 min
 Delta R.T.: 0.023 min
 Response: 4643883
 Conc: 1.11 ng/ml

Instrument :
 ECD_D
 ClientSampleId :
 SB-1125-18



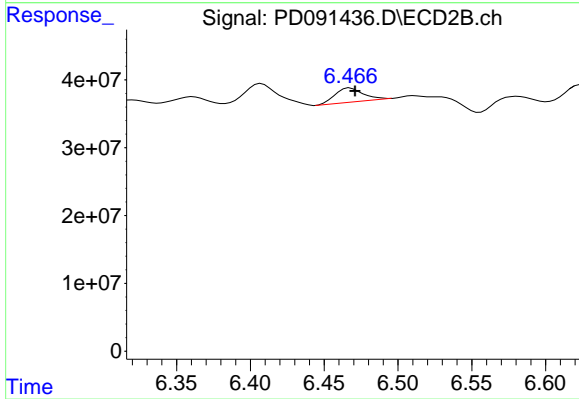
#18 Endrin aldehyde

R.T.: 6.245 min
 Delta R.T.: -0.002 min
 Response: 30275801
 Conc: 0.86 ng/ml



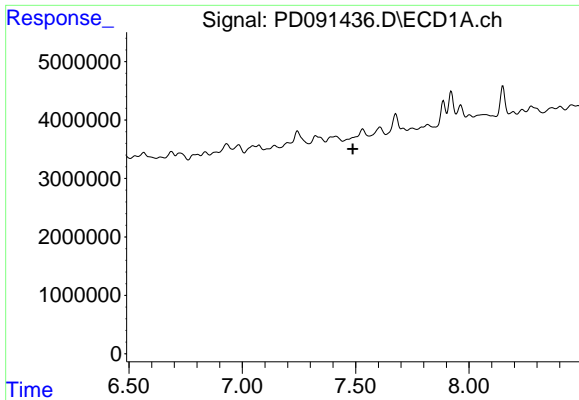
#19 Endosulfan Sulfate

R.T.: 7.143 min
 Delta R.T.: 0.000 min
 Response: 730332
 Conc: 0.14 ng/ml



#19 Endosulfan Sulfate

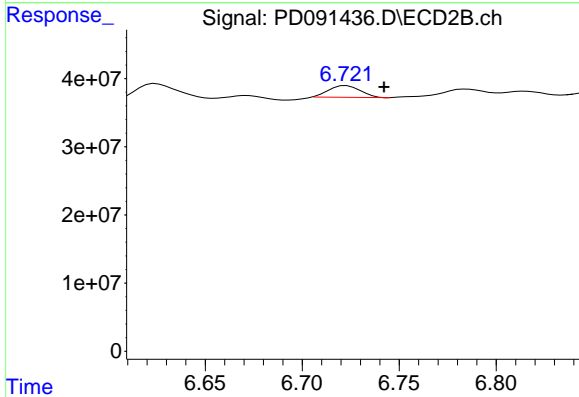
R.T.: 6.468 min
 Delta R.T.: -0.003 min
 Response: 27555449
 Conc: 0.61 ng/ml



#20 Methoxychlor

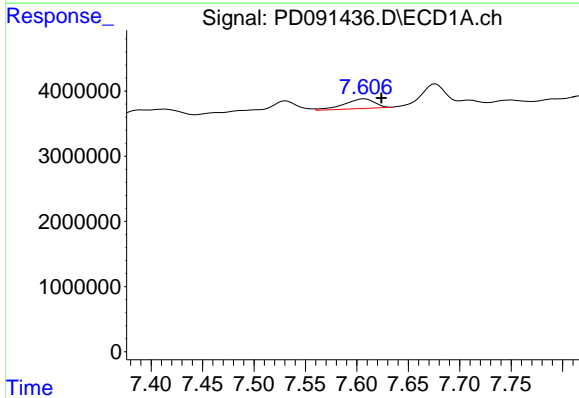
R.T.: 0.000 min
 Exp R.T.: 7.487 min
 Response: 0
 Conc: N.D.

Instrument :
 ECD_D
 ClientSampleId :
 SB-1125-18



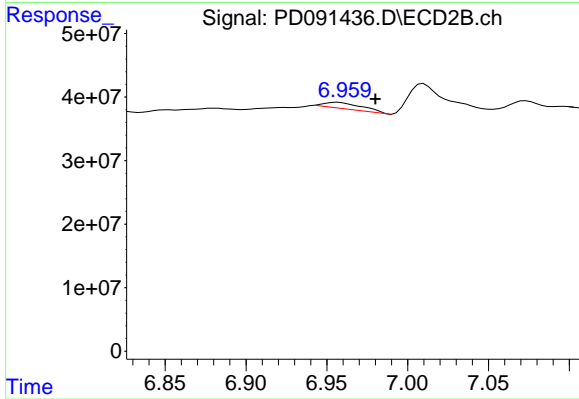
#20 Methoxychlor

R.T.: 6.723 min
 Delta R.T.: -0.019 min
 Response: 19589542
 Conc: 0.98 ng/ml



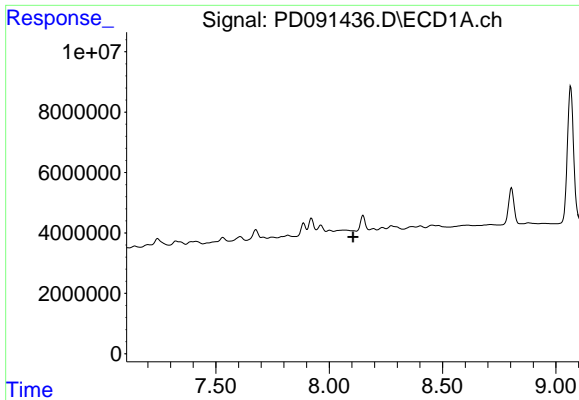
#21 Endrin ketone

R.T.: 7.608 min
 Delta R.T.: -0.016 min
 Response: 3020661
 Conc: 0.54 ng/ml



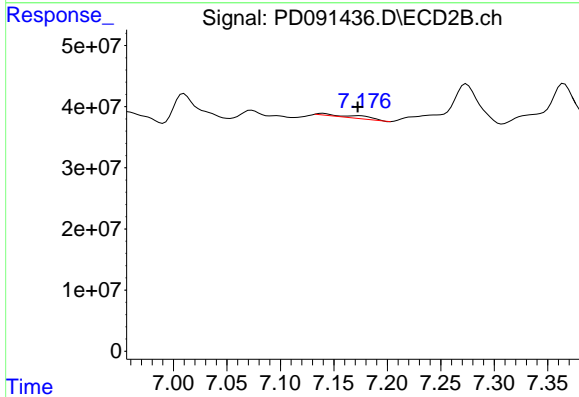
#21 Endrin ketone

R.T.: 6.957 min
 Delta R.T.: -0.023 min
 Response: 16211805
 Conc: 0.32 ng/ml

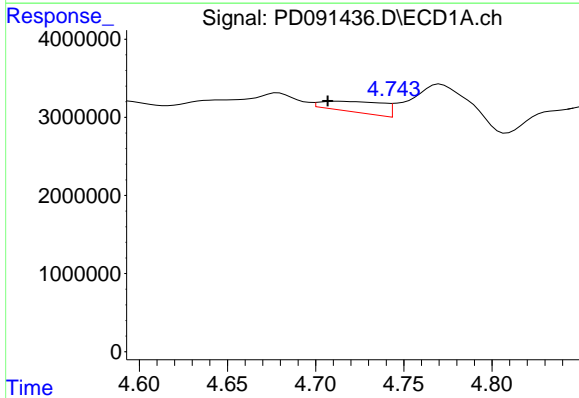


#22 Mirex
 R.T.: 0.000 min
 Exp R.T.: 8.106 min
 Response: 0
 Conc: N.D.

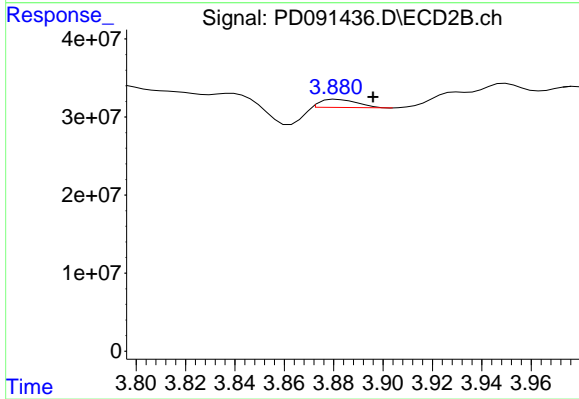
Instrument :
 ECD_D
 ClientSampleId :
 SB-1125-18



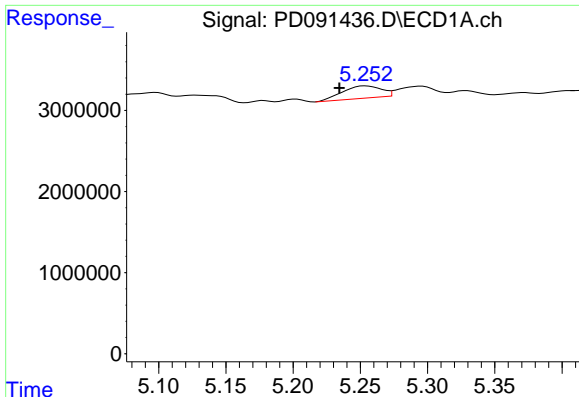
#22 Mirex
 R.T.: 7.174 min
 Delta R.T.: 0.001 min
 Response: 9977197
 Conc: 0.30 ng/ml



#23 Chlordane-1
 R.T.: 4.712 min
 Delta R.T.: 0.006 min
 Response: 3277553
 Conc: 13.32 ng/ml



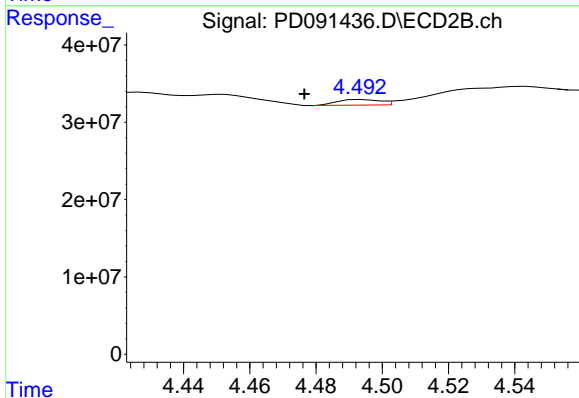
#23 Chlordane-1
 R.T.: 3.881 min
 Delta R.T.: -0.015 min
 Response: 10644880
 Conc: 6.19 ng/ml



#24 Chlordane-2

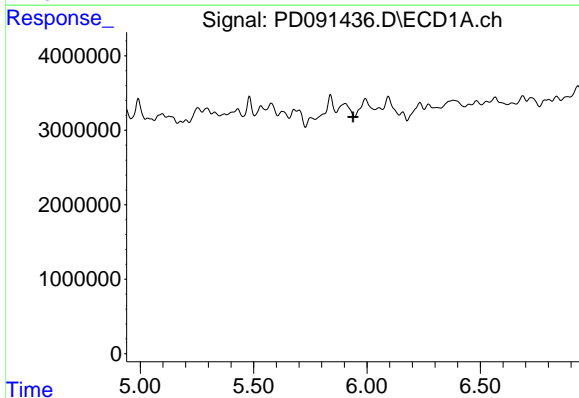
R.T.: 5.254 min
 Delta R.T.: 0.020 min
 Response: 3020975
 Conc: 12.23 ng/ml

Instrument :
 ECD_D
 ClientSampleId :
 SB-1125-18



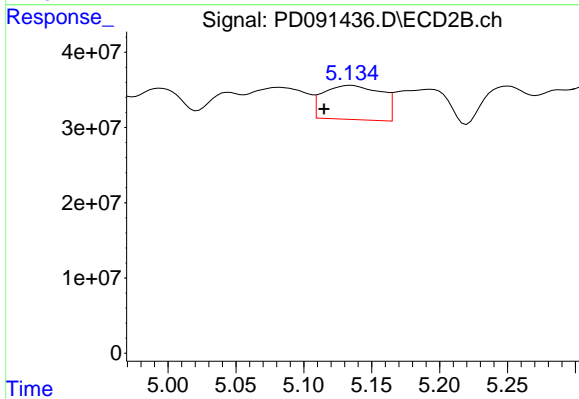
#24 Chlordane-2

R.T.: 4.494 min
 Delta R.T.: 0.017 min
 Response: 6372136
 Conc: 3.64 ng/ml



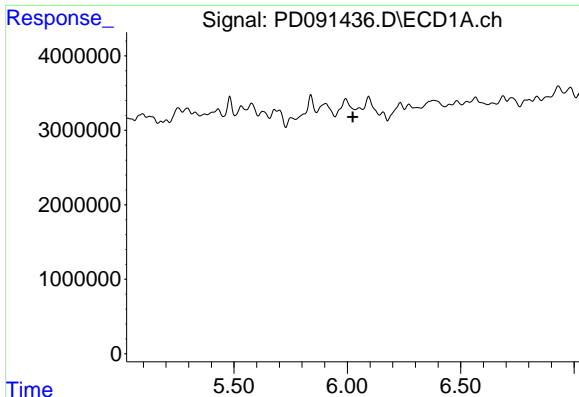
#25 Chlordane-3

R.T.: 0.000 min
 Exp R.T. : 5.939 min
 Response: 0
 Conc: N.D.



#25 Chlordane-3

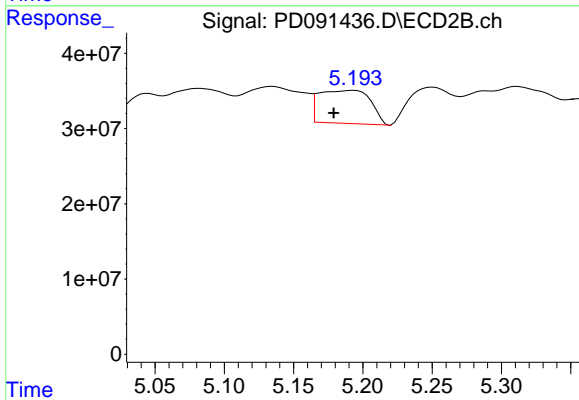
R.T.: 5.135 min
 Delta R.T.: 0.020 min
 Response: 134834275
 Conc: 23.43 ng/ml



#26 Chlordane-4

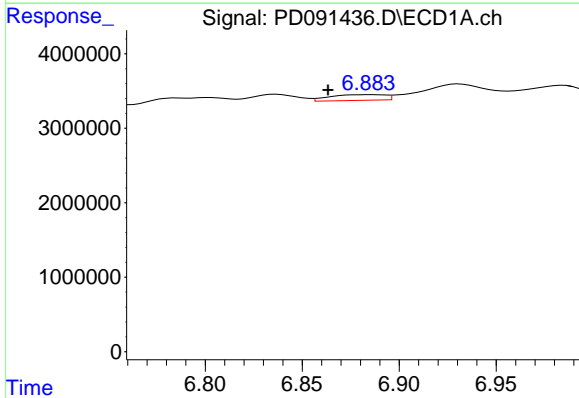
R.T.: 0.000 min
 Exp R.T.: 6.024 min
 Response: 0
 Conc: N.D.

Instrument :
 ECD_D
 ClientSampleId :
 SB-1125-18



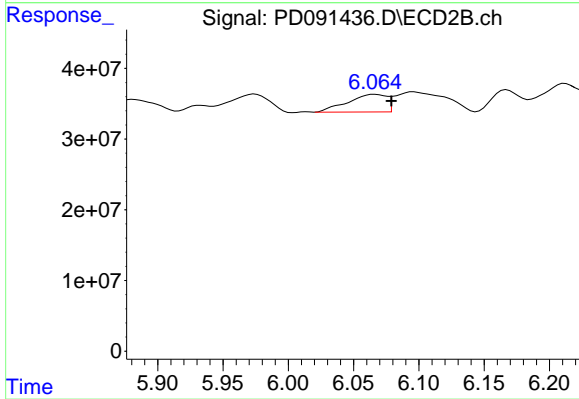
#26 Chlordane-4

R.T.: 5.194 min
 Delta R.T.: 0.015 min
 Response: 114068324
 Conc: 23.85 ng/ml



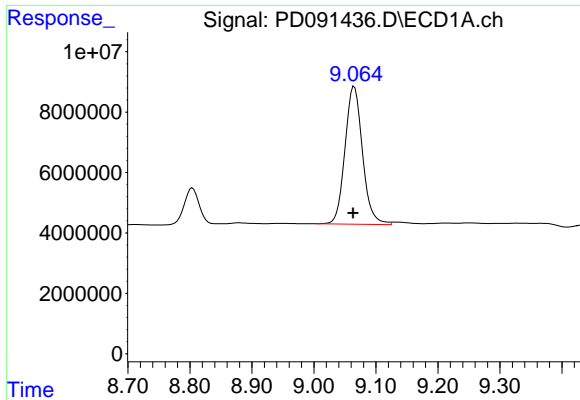
#27 Chlordane-5

R.T.: 6.885 min
 Delta R.T.: 0.022 min
 Response: 1539130
 Conc: 7.79 ng/ml



#27 Chlordane-5

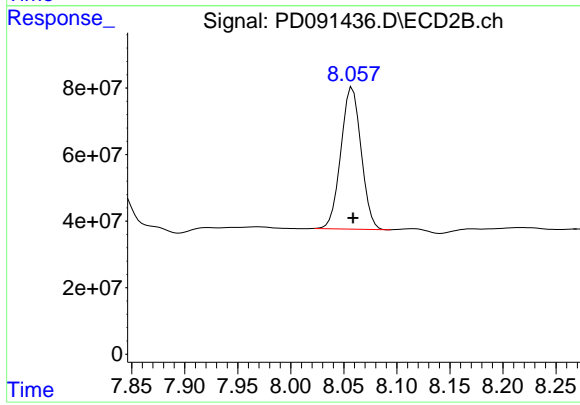
R.T.: 6.066 min
 Delta R.T.: -0.013 min
 Response: 51882825
 Conc: 25.57 ng/ml



#28 Decachlorobiphenyl

R.T.: 9.065 min
Delta R.T.: 0.002 min
Response: 89567253
Conc: 17.98 ng/ml

Instrument :
ECD_D
ClientSampleId :
SB-1125-18



#28 Decachlorobiphenyl

R.T.: 8.058 min
Delta R.T.: 0.000 min
Response: 564986089
Conc: 14.28 ng/ml