

Data Path : Z:\pestpcbsrv\HPCHEM1\ECD_D\Data\PD120318\
 Data File : PD050601.D
 Signal(s) : Signal #1: ECD1A.CH Signal #2: ECD2B.CH
 Acq On : 03 Dec 2018 16:25
 Operator : AJ\SJ
 Sample : TOXAPH401
 Misc :
 ALS Vial : 7 Sample Multiplier: 1

Instrument :
 ECD_D
 ClientSampleId :
 TOXAPH401

Integration File signal 1: autoint1.e
 Integration File signal 2: autoint2.e
 Quant Time: Dec 03 17:22:19 2018
 Quant Method : Z:\pestpcbsrv\HPCHEM1\ECD_D\Method\PD120318CLP.M
 Quant Title : GC Extractables
 QLast Update : Mon Dec 03 17:21:15 2018
 Response via : Initial Calibration
 Integrator: ChemStation 6890 Scale Mode: Large solvent peaks clipped

Volume Inj. : 1 µl
 Signal #1 Phase : ZB-MR2 Signal #2 Phase: ZB-MR1
 Signal #1 Info : 30M x 0.32mm x0.2 Signal #2 Info : 30M x 0.32mm x 0.50µm

	Compound	RT#1	RT#2	Resp#1	Resp#2	ng/ml	ng/ml

System Monitoring Compounds							
1)	SA Tetrachlo...	3.227	4.044	61714516	1097.5E6	41.067	38.515
27)	SA Decachlor...	7.835	9.153	130.6E6	1612.2E6	77.223	74.178
Target Compounds							
22)	Toxaphene-1	5.382	6.447	46625487	532.9E6	3999.707	3702.524
23)	Toxaphene-2	5.532	6.739	51801413	635.9E6	4049.630	3820.143
24)	Toxaphene-3	5.964	7.147	148.9E6	890.1E6	4148.686	3765.686
25)	Toxaphene-4	6.204	7.404	159.8E6	672.5E6	4250.638	3875.371
26)	Toxaphene-5	6.678	7.725	180.4E6	1268.7E6	4143.612	3943.494

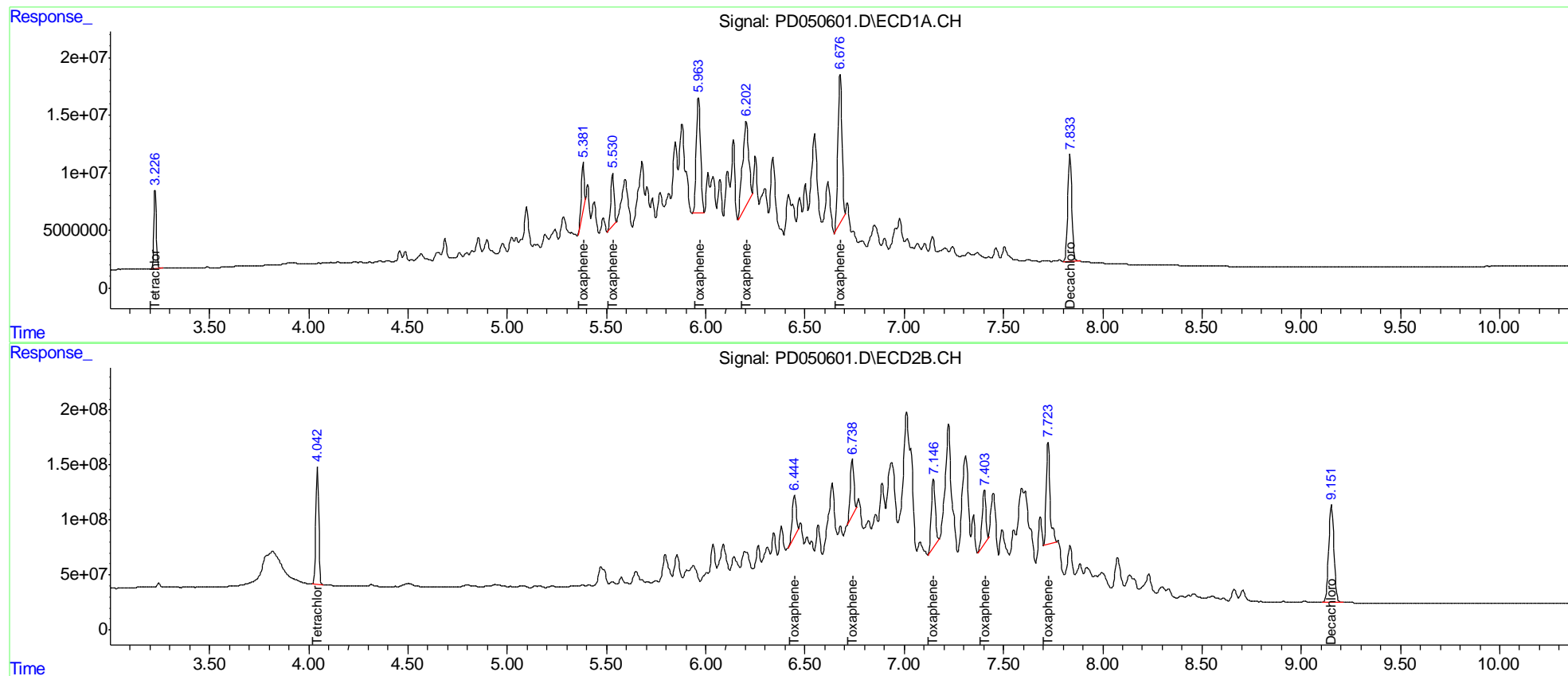
(f)=RT Delta > 1/2 Window (#)=Amounts differ by > 25% (m)=manual int.

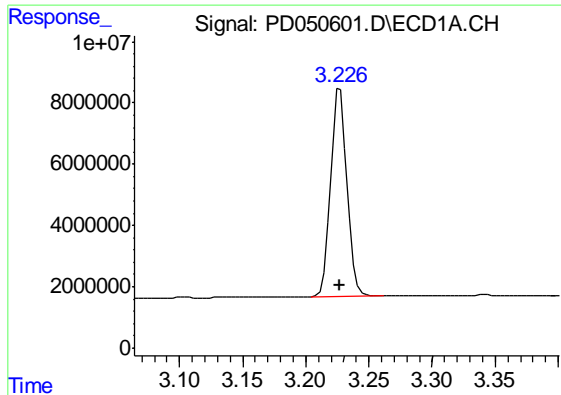
Data Path : Z:\pestpcbsrv\HPCHEM1\ECD_D\Data\PD120318\
 Data File : PD050601.D
 Signal(s) : Signal #1: ECD1A.CH Signal #2: ECD2B.CH
 Acq On : 03 Dec 2018 16:25
 Operator : AJ\SJ
 Sample : TOXAPH401
 Misc :
 ALS Vial : 7 Sample Multiplier: 1

Instrument :
 ECD_D
 ClientSampled :
 TOXAPH401

Integration File signal 1: autoint1.e
 Integration File signal 2: autoint2.e
 Quant Time: Dec 03 17:22:19 2018
 Quant Method : Z:\pestpcbsrv\HPCHEM1\ECD_D\Method\PD120318CLP.M
 Quant Title : GC Extractables
 QLast Update : Mon Dec 03 17:21:15 2018
 Response via : Initial Calibration
 Integrator: ChemStation 6890 Scale Mode: Large solvent peaks clipped

Volume Inj. : 1 µl
 Signal #1 Phase : ZB-MR2 Signal #2 Phase: ZB-MR1
 Signal #1 Info : 30M x 0.32mm x0.2 Signal #2 Info : 30M x 0.32mm x 0.50µm

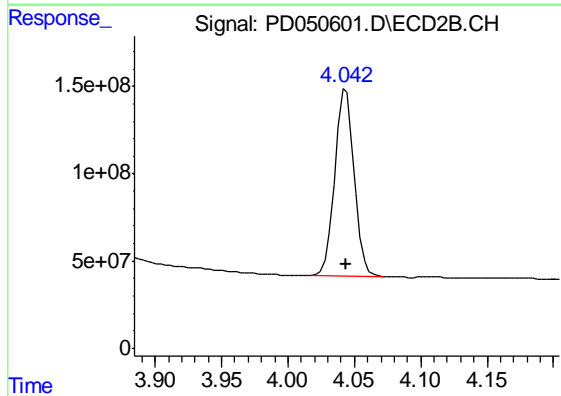




#1 Tetrachloro-m-xylene

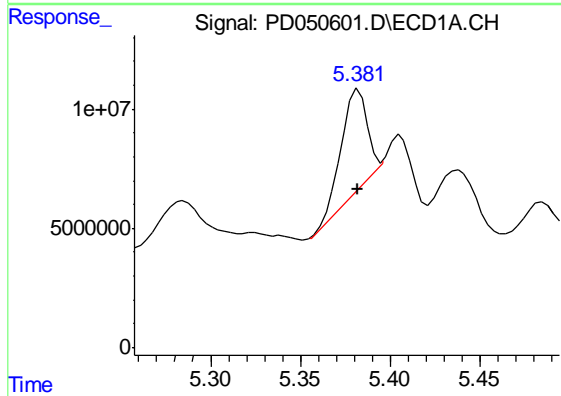
R.T.: 3.227 min
 Delta R.T.: 0.000 min
 Response: 61714516
 Conc: 41.07 ng/ml

Instrument :
 ECD_D
 ClientSampleId :
 TOXAPH401



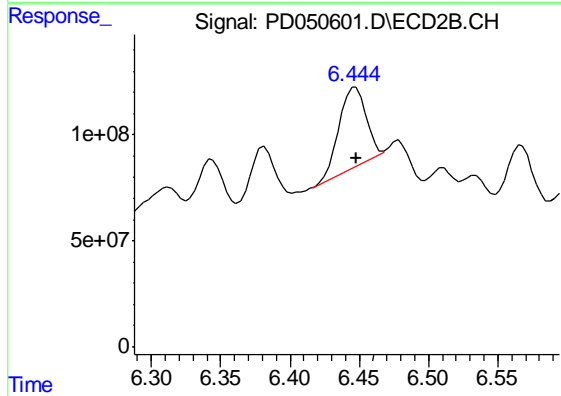
#1 Tetrachloro-m-xylene

R.T.: 4.044 min
 Delta R.T.: 0.000 min
 Response: 1097521336
 Conc: 38.51 ng/ml



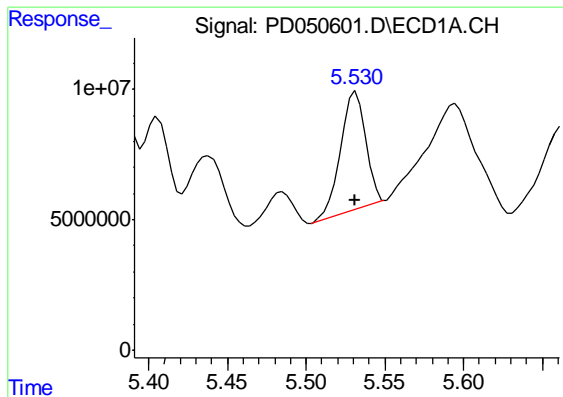
#22 Toxaphene-1

R.T.: 5.382 min
 Delta R.T.: 0.000 min
 Response: 46625487
 Conc: 3999.71 ng/ml



#22 Toxaphene-1

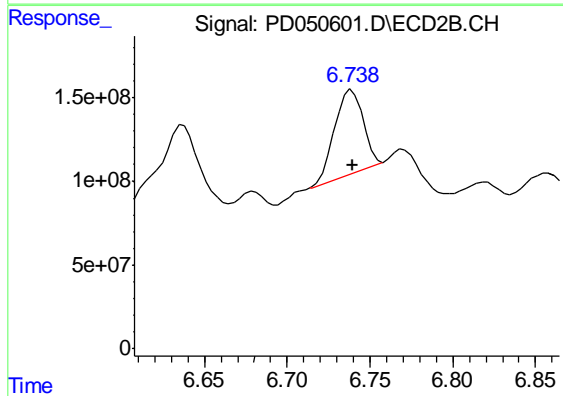
R.T.: 6.447 min
 Delta R.T.: 0.000 min
 Response: 532917996
 Conc: 3702.52 ng/ml



#23 Toxaphene-2

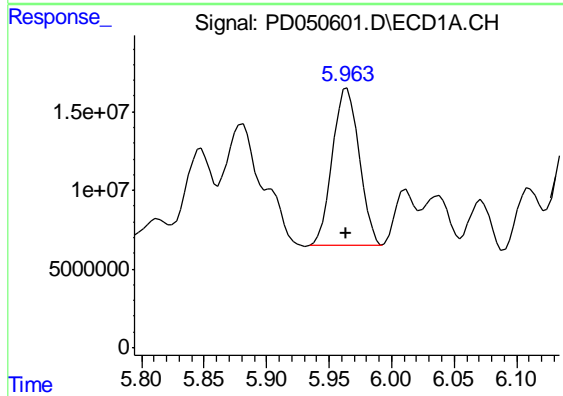
R.T.: 5.532 min
 Delta R.T.: 0.000 min
 Response: 51801413
 Conc: 4049.63 ng/ml

Instrument :
 ECD_D
 ClientSampleId :
 TOXAPH401



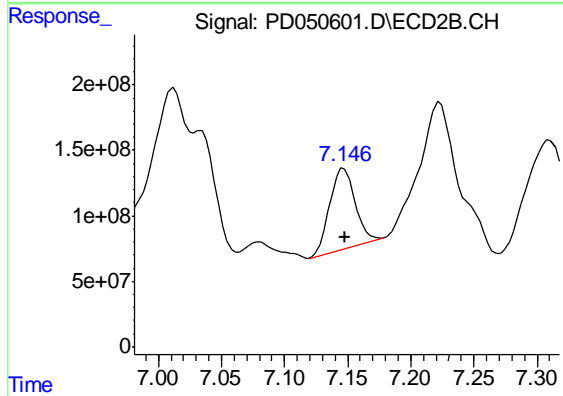
#23 Toxaphene-2

R.T.: 6.739 min
 Delta R.T.: 0.000 min
 Response: 635946008
 Conc: 3820.14 ng/ml



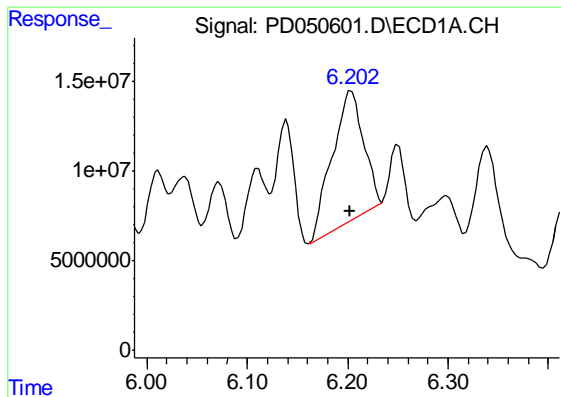
#24 Toxaphene-3

R.T.: 5.964 min
 Delta R.T.: 0.000 min
 Response: 148941671
 Conc: 4148.69 ng/ml



#24 Toxaphene-3

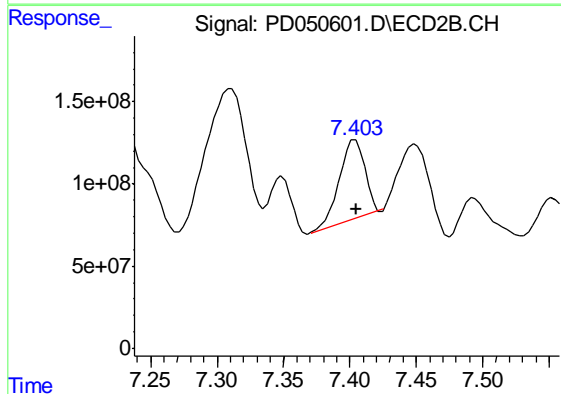
R.T.: 7.147 min
 Delta R.T.: 0.000 min
 Response: 890091558
 Conc: 3765.69 ng/ml



#25 Toxaphene-4

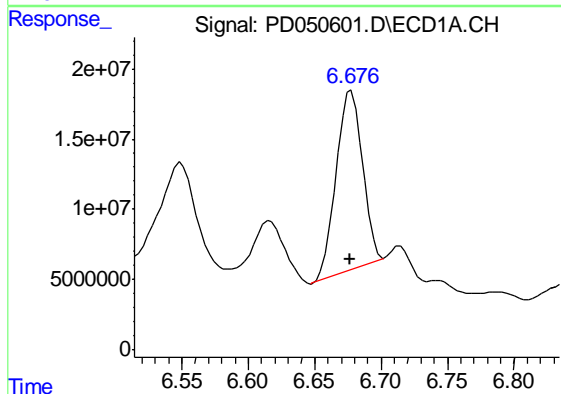
R.T.: 6.204 min
Delta R.T.: 0.000 min
Response: 159775786
Conc: 4250.64 ng/ml

Instrument :
ECD_D
ClientSampleId :
TOXAPH401



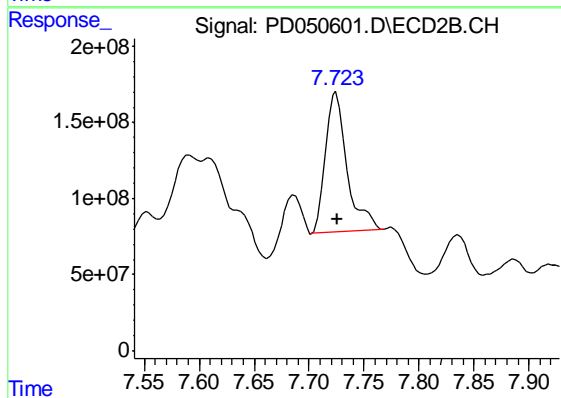
#25 Toxaphene-4

R.T.: 7.404 min
Delta R.T.: -0.001 min
Response: 672542221
Conc: 3875.37 ng/ml



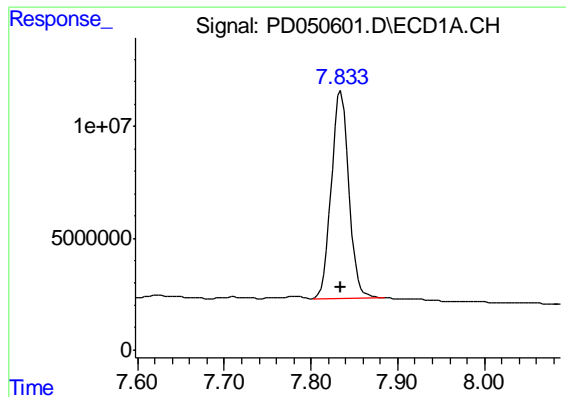
#26 Toxaphene-5

R.T.: 6.678 min
Delta R.T.: 0.001 min
Response: 180422397
Conc: 4143.61 ng/ml



#26 Toxaphene-5

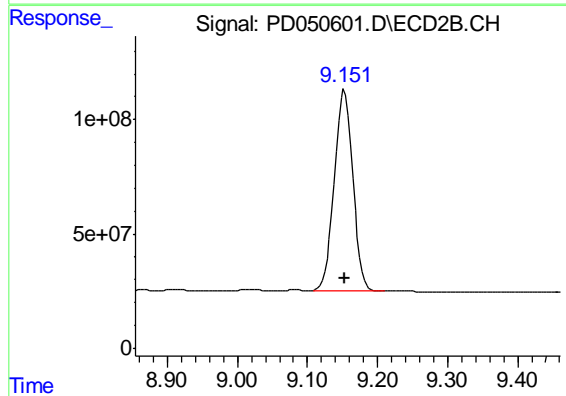
R.T.: 7.725 min
Delta R.T.: 0.000 min
Response: 1268743821
Conc: 3943.49 ng/ml



#27 Decachlorobiphenyl

R.T.: 7.835 min
Delta R.T.: 0.000 min
Response: 130574776
Conc: 77.22 ng/ml

Instrument :
ECD_D
ClientSampleId :
TOXAPH401



#27 Decachlorobiphenyl

R.T.: 9.153 min
Delta R.T.: 0.000 min
Response: 1612231319
Conc: 74.18 ng/ml