

Data Path : Z:\pestpcbsrv\HPCHEM1\ECD_D\Data\PD120318\
 Data File : PD050608.D
 Signal(s) : Signal #1: ECD1A.CH Signal #2: ECD2B.CH
 Acq On : 03 Dec 2018 18:03
 Operator : AJ\SJ
 Sample : INDB301
 Misc :
 ALS Vial : 14 Sample Multiplier: 1

Instrument :
 ECD_D
 ClientSampleID :
 INDB301

Integration File signal 1: autoint1.e
 Integration File signal 2: autoint2.e
 Quant Time: Dec 03 19:12:05 2018
 Quant Method : Z:\pestpcbsrv\HPCHEM1\ECD_D\Method\PD120318CLP.M
 Quant Title : GC Extractables
 QLast Update : Mon Dec 03 19:10:44 2018
 Response via : Initial Calibration
 Integrator: ChemStation 6890 Scale Mode: Large solvent peaks clipped

Volume Inj. : 1 µl
 Signal #1 Phase : ZB-MR1 Signal #2 Phase: ZB-MR1
 Signal #1 Info : 30M x 0.32mm x0.2 Signal #2 Info : 30M x 0.32mm x 0.50µm

	Compound	RT#1	RT#2	Resp#1	Resp#2	ng/ml	ng/ml

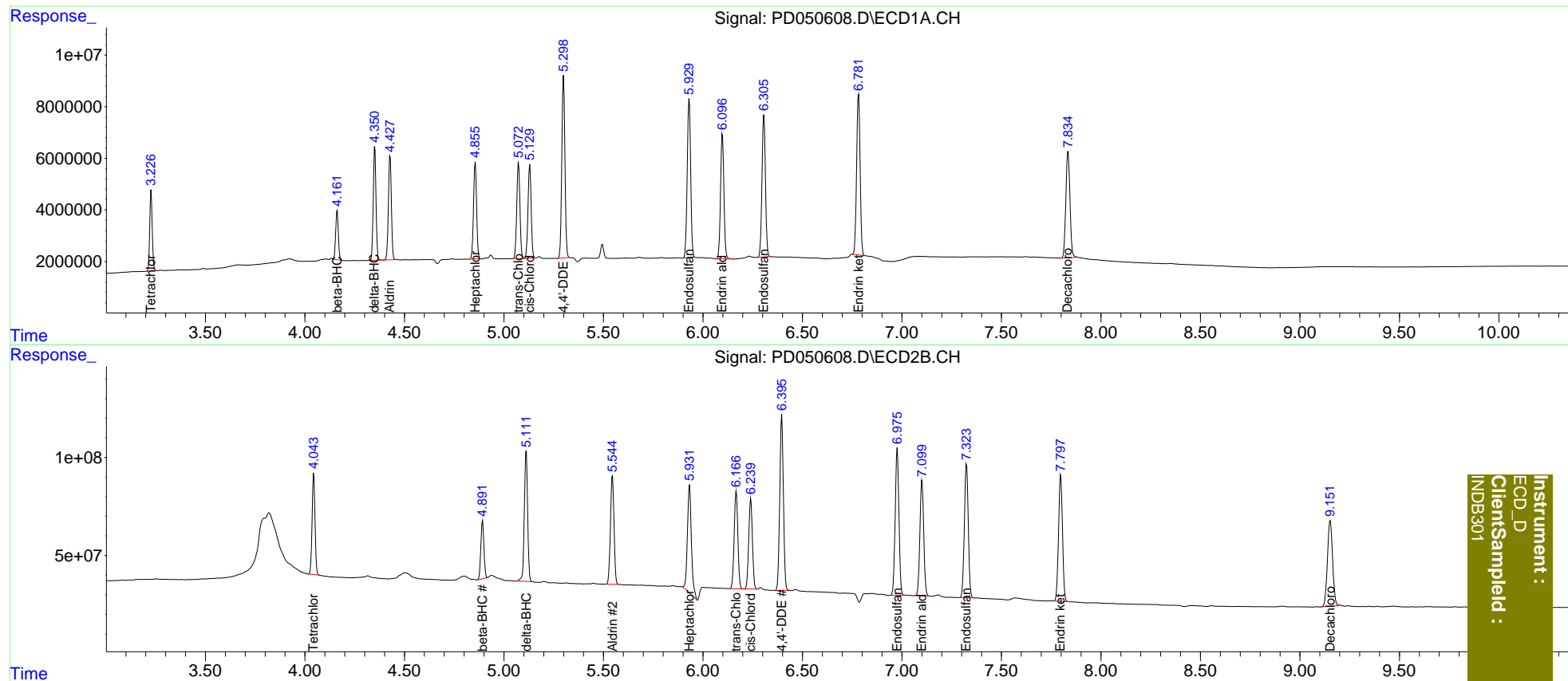
System Monitoring Compounds							
1)	SA Tetrachlo...	3.227	4.044	27682568	524.9E6	20.000	20.000
27)	SA Decachlor...	7.835	9.152	59743219	789.2E6	40.000	40.000
Target Compounds							
5)	MB Aldrin	4.428	5.545	41576021	690.8E6	20.000	20.000
6)	B beta-BHC	4.162	4.893	17868438	320.1E6	20.000	20.000
7)	B delta-BHC	4.351	5.112	42535181	775.3E6	20.000	20.000
8)	B Heptachlo...	4.856	5.933	40018028	756.3E6	20.000	20.000
10)	B trans-Chl...	5.073	6.167	40872856	635.5E6	20.000	20.000
11)	B cis-Chlor...	5.130	6.240	39767141	595.0E6	20.000	20.000
12)	B 4,4'-DDE	5.300	6.396	76784772	1137.8E6	40.000	40.000
15)	B Endosulfa...	5.931	6.977	73500913	983.8E6	40.000	40.000
18)	B Endrin al...	6.098	7.101	57185005	787.2E6	40.000	40.000
19)	B Endosulfa...	6.307	7.325	66356276	928.4E6	40.000	40.000
21)	B Endrin ke...	6.782	7.798	76172838	891.7E6	40.000	40.000

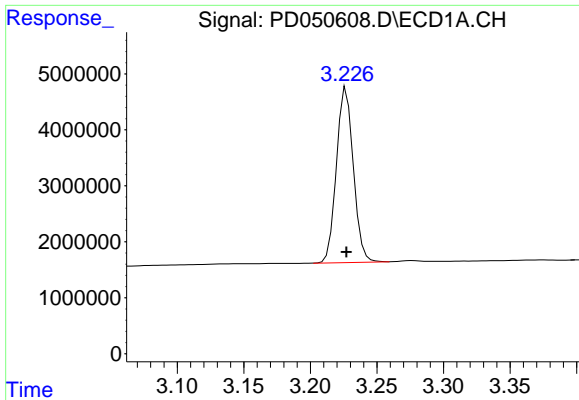
(f)=RT Delta > 1/2 Window (#)=Amounts differ by > 25% (m)=manual int.

Data Path : Z:\pestpcbsrv\HPCHEM1\ECD_D\Data\PD120318\
 Data File : PD050608.D
 Signal(s) : Signal #1: ECD1A.CH Signal #2: ECD2B.CH
 Acq On : 03 Dec 2018 18:03
 Operator : AJ\SJ
 Sample : INDB301
 Misc :
 ALS Vial : 14 Sample Multiplier: 1

Integration File signal 1: autoint1.e
 Integration File signal 2: autoint2.e
 Quant Time: Dec 03 19:12:05 2018
 Quant Method : Z:\pestpcbsrv\HPCHEM1\ECD_D\Method\PD120318CLP.M
 Quant Title : GC Extractables
 QLast Update : Mon Dec 03 19:10:44 2018
 Response via : Initial Calibration
 Integrator: ChemStation 6890 Scale Mode: Large solvent peaks clipped

Volume Inj. : 1 µl
 Signal #1 Phase : ZB-MR2 Signal #2 Phase: ZB-MR1
 Signal #1 Info : 30M x 0.32mm x0.2 Signal #2 Info : 30M x 0.32mm x 0.50µm

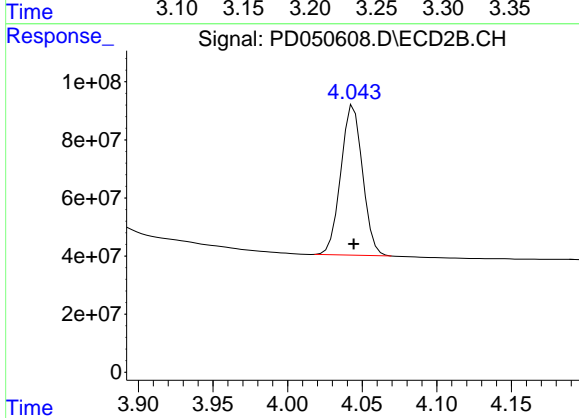




#1 Tetrachloro-m-xylene

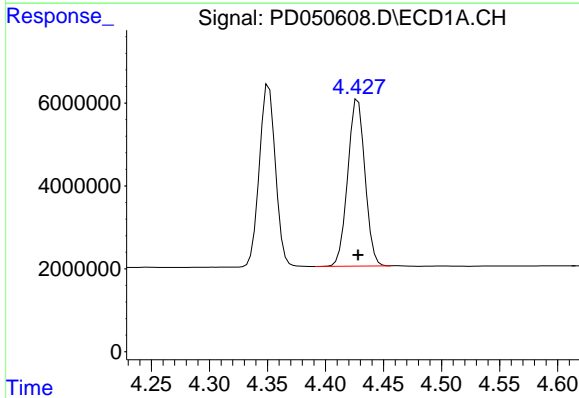
R.T.: 3.227 min
 Delta R.T.: 0.000 min
 Response: 27682568
 Conc: 20.00 ng/ml

Instrument :
 ECD_D
 ClientSampleId :
 INDB301



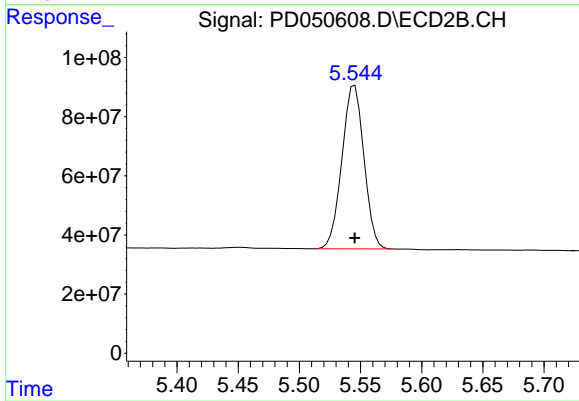
#1 Tetrachloro-m-xylene

R.T.: 4.044 min
 Delta R.T.: 0.000 min
 Response: 524946382
 Conc: 20.00 ng/ml



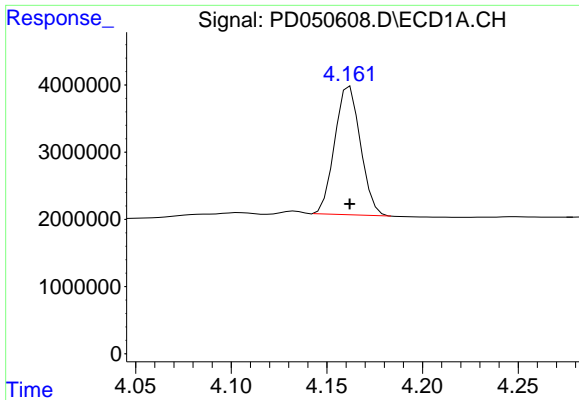
#5 Aldrin

R.T.: 4.428 min
 Delta R.T.: 0.000 min
 Response: 41576021
 Conc: 20.00 ng/ml



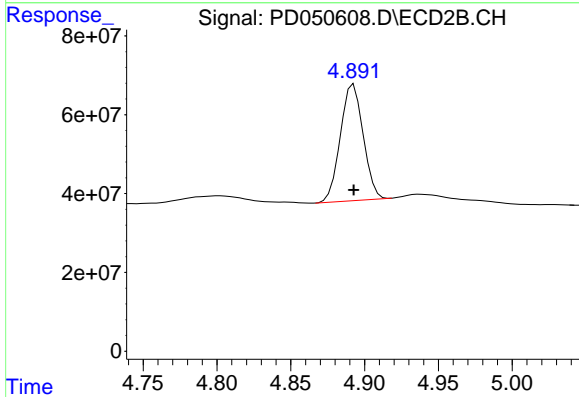
#5 Aldrin

R.T.: 5.545 min
 Delta R.T.: 0.000 min
 Response: 690802953
 Conc: 20.00 ng/ml

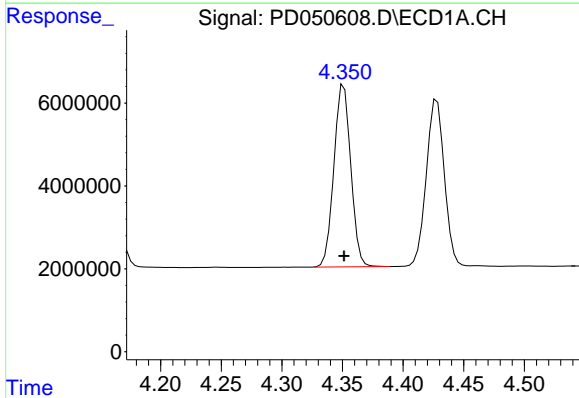


#6 beta-BHC
 R.T.: 4.162 min
 Delta R.T.: 0.000 min
 Response: 17868438
 Conc: 20.00 ng/ml

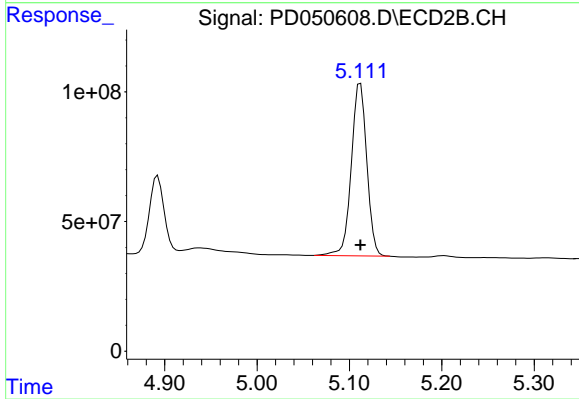
Instrument :
 ECD_D
 ClientSampled :
 INDB301



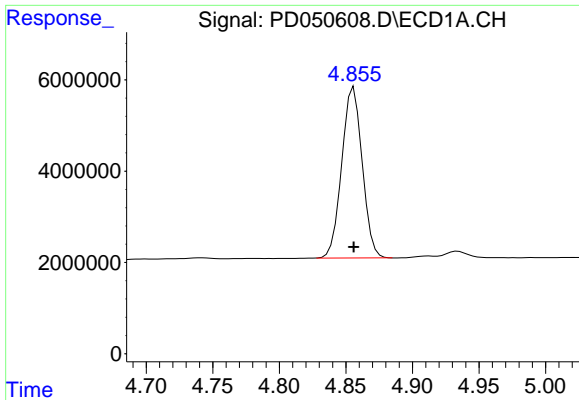
#6 beta-BHC
 R.T.: 4.893 min
 Delta R.T.: 0.000 min
 Response: 320118641
 Conc: 20.00 ng/ml



#7 delta-BHC
 R.T.: 4.351 min
 Delta R.T.: 0.000 min
 Response: 42535181
 Conc: 20.00 ng/ml



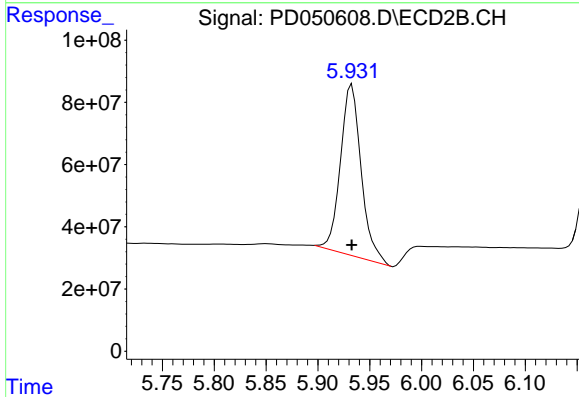
#7 delta-BHC
 R.T.: 5.112 min
 Delta R.T.: 0.000 min
 Response: 775271039
 Conc: 20.00 ng/ml



#8 Heptachlor epoxide

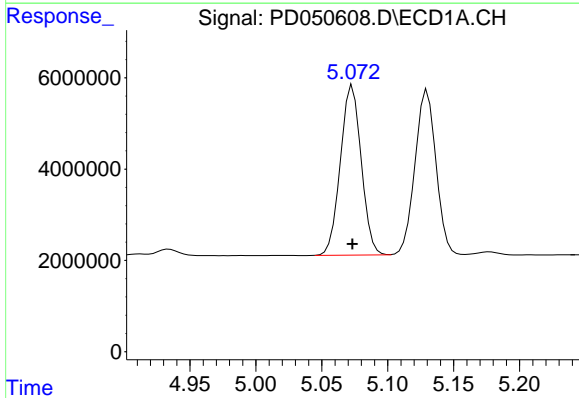
R.T.: 4.856 min
 Delta R.T.: 0.000 min
 Response: 40018028
 Conc: 20.00 ng/ml

Instrument :
 ECD_D
 ClientSampled :
 INDB301



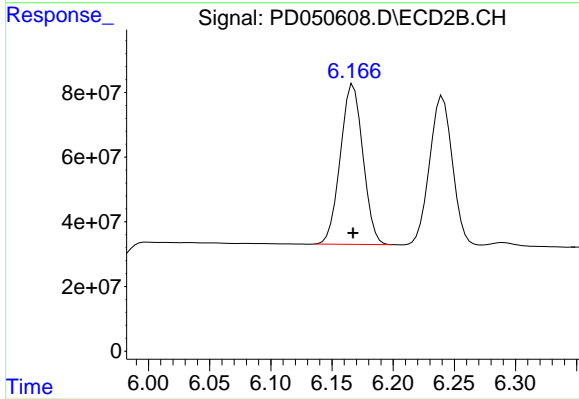
#8 Heptachlor epoxide

R.T.: 5.933 min
 Delta R.T.: 0.000 min
 Response: 756272513
 Conc: 20.00 ng/ml



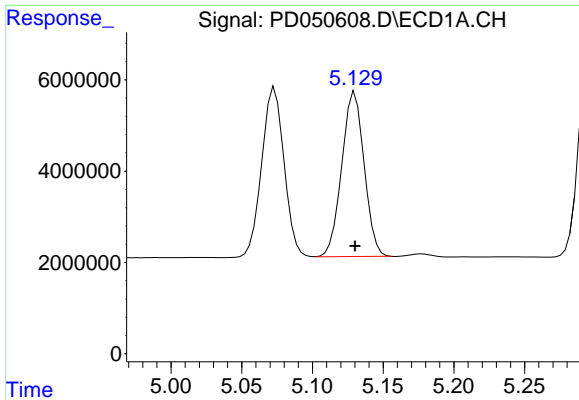
#10 trans-Chlordane

R.T.: 5.073 min
 Delta R.T.: 0.000 min
 Response: 40872856
 Conc: 20.00 ng/ml



#10 trans-Chlordane

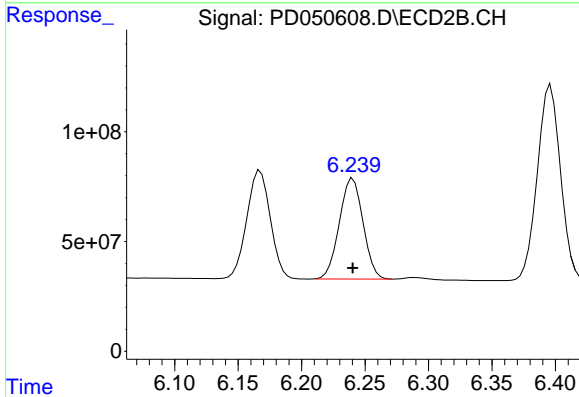
R.T.: 6.167 min
 Delta R.T.: 0.000 min
 Response: 635547337
 Conc: 20.00 ng/ml



#11 cis-Chlordane

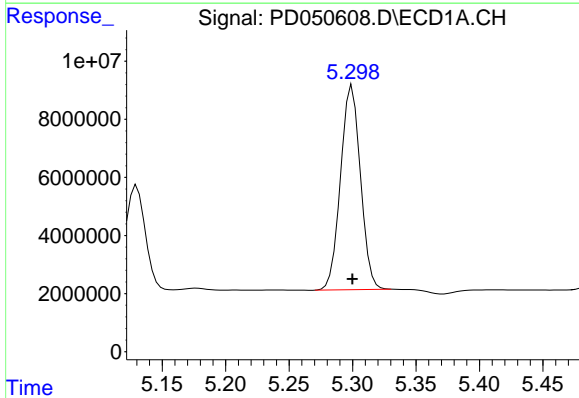
R.T.: 5.130 min
Delta R.T.: 0.000 min
Response: 39767141
Conc: 20.00 ng/ml

Instrument :
ECD_D
ClientSampled :
INDB301



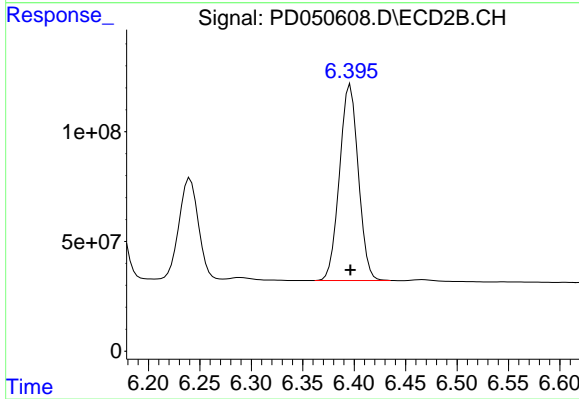
#11 cis-Chlordane

R.T.: 6.240 min
Delta R.T.: 0.000 min
Response: 595012442
Conc: 20.00 ng/ml



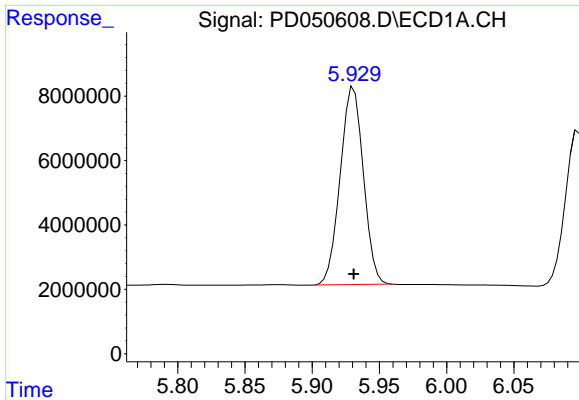
#12 4,4'-DDE

R.T.: 5.300 min
Delta R.T.: 0.000 min
Response: 76784772
Conc: 40.00 ng/ml



#12 4,4'-DDE

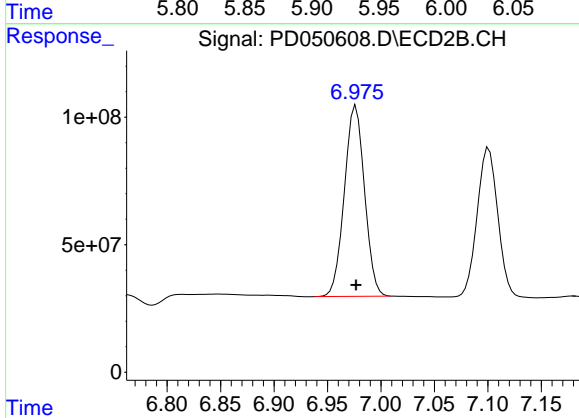
R.T.: 6.396 min
Delta R.T.: 0.000 min
Response: 1137769806
Conc: 40.00 ng/ml



#15 Endosulfan II

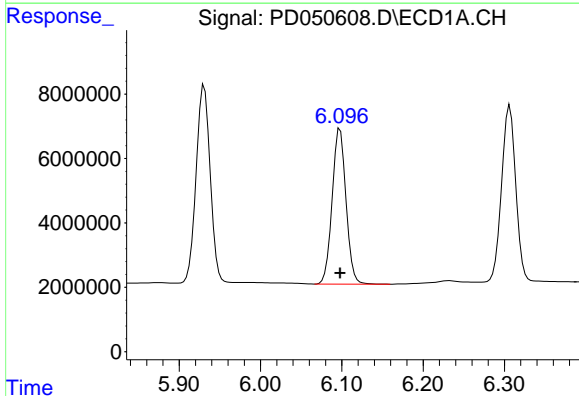
R.T.: 5.931 min
 Delta R.T.: 0.000 min
 Response: 73500913
 Conc: 40.00 ng/ml

Instrument :
 ECD_D
 ClientSampled :
 INDB301



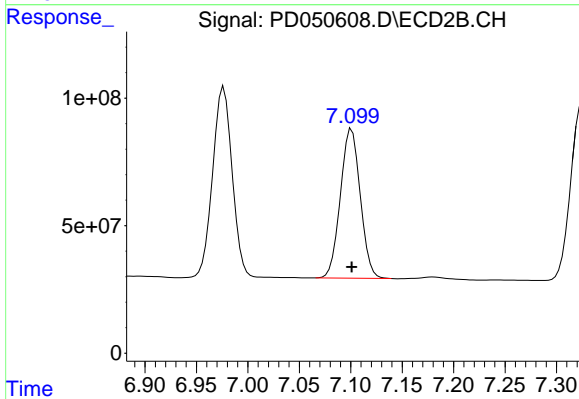
#15 Endosulfan II

R.T.: 6.977 min
 Delta R.T.: 0.000 min
 Response: 983777312
 Conc: 40.00 ng/ml



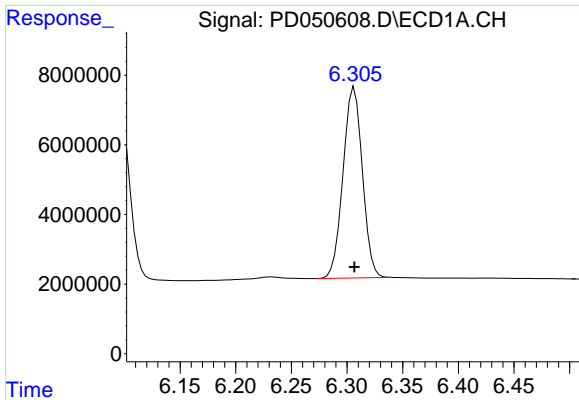
#18 Endrin aldehyde

R.T.: 6.098 min
 Delta R.T.: 0.000 min
 Response: 57185005
 Conc: 40.00 ng/ml



#18 Endrin aldehyde

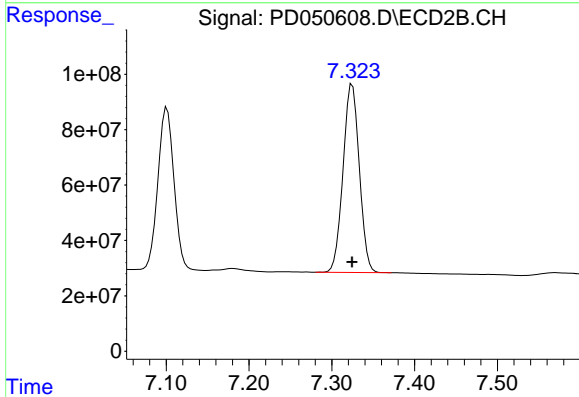
R.T.: 7.101 min
 Delta R.T.: 0.000 min
 Response: 787245099
 Conc: 40.00 ng/ml



#19 Endosulfan Sulfate

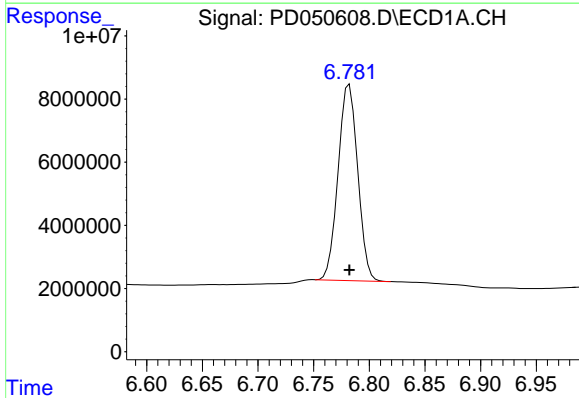
R.T.: 6.307 min
 Delta R.T.: 0.000 min
 Response: 66356276
 Conc: 40.00 ng/ml

Instrument :
 ECD_D
 ClientSampled :
 INDB301



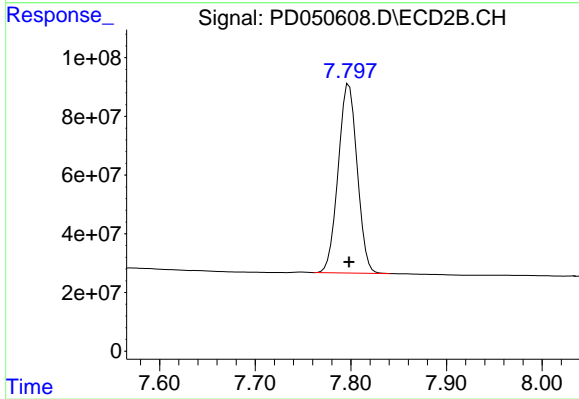
#19 Endosulfan Sulfate

R.T.: 7.325 min
 Delta R.T.: 0.000 min
 Response: 928401093
 Conc: 40.00 ng/ml



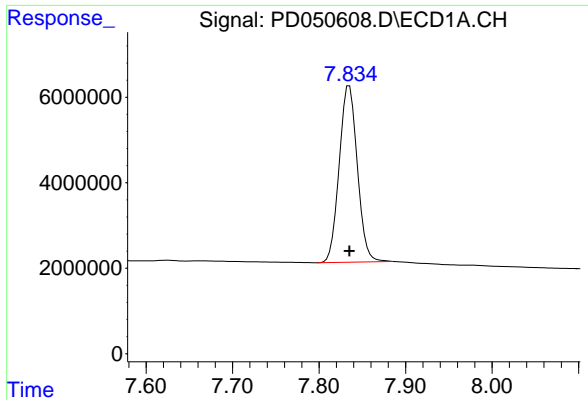
#21 Endrin ketone

R.T.: 6.782 min
 Delta R.T.: 0.000 min
 Response: 76172838
 Conc: 40.00 ng/ml



#21 Endrin ketone

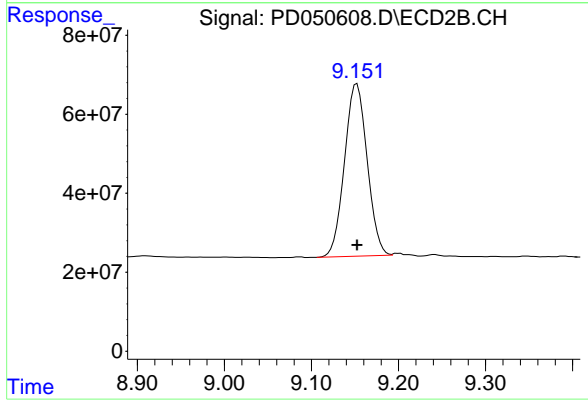
R.T.: 7.798 min
 Delta R.T.: 0.000 min
 Response: 891739985
 Conc: 40.00 ng/ml



#27 Decachlorobiphenyl

R.T.: 7.835 min
Delta R.T.: 0.000 min
Response: 59743219
Conc: 40.00 ng/ml

Instrument :
ECD_D
ClientSampled :
INDB301



#27 Decachlorobiphenyl

R.T.: 9.152 min
Delta R.T.: 0.000 min
Response: 789243030
Conc: 40.00 ng/ml