

Data Path : Z:\pestpcbsrv\HPCHEM1\ECD_D\Data\PD120318\
 Data File : PD050611.D
 Signal(s) : Signal #1: ECD1A.CH Signal #2: ECD2B.CH
 Acq On : 03 Dec 2018 18:44
 Operator : AJ\SJ
 Sample : INDA501
 Misc :
 ALS Vial : 17 Sample Multiplier: 1

Instrument :
 ECD_D
 ClientSampleId :
 INDA501

Integration File signal 1: autoint1.e
 Integration File signal 2: autoint2.e
 Quant Time: Dec 03 19:03:26 2018
 Quant Method : Z:\pestpcbsrv\HPCHEM1\ECD_D\Method\PD120318CLP.M
 Quant Title : GC Extractables
 QLast Update : Mon Dec 03 18:33:18 2018
 Response via : Initial Calibration
 Integrator: ChemStation 6890 Scale Mode: Large solvent peaks clipped

Volume Inj. : 1 µl
 Signal #1 Phase : ZB-MR2 Signal #2 Phase: ZB-MR1
 Signal #1 Info : 30M x 0.32mm x 0.2 Signal #2 Info : 30M x 0.32mm x 0.50µm

Compound	RT#1	RT#2	Resp#1	Resp#2	ng/ml	ng/ml

System Monitoring Compounds						
1) SA Tetrachlo...	3.227	4.044	125.5E6	2069.8E6	85.586	74.808
27) SA Decachlor...	7.835	9.153	248.1E6	3011.8E6	157.789	143.483
Target Compounds						
2) A alpha-BHC	3.648	4.437	212.8E6	3229.0E6	91.673	77.359
3) MA gamma-BHC...	3.917	4.724	197.8E6	2946.1E6	89.178	76.628
4) MA Heptachlor	4.195	5.238	202.8E6	2905.7E6	89.257	73.789
9) A Endosulfan I	5.178	6.292	171.1E6	2230.6E6	86.498	73.846
13) MA Dieldrin	5.414	6.550	396.6E6	4611.2E6	178.122	150.104
14) MA Endrin	5.661	6.768	338.9E6	3542.3E6	179.011	153.308
16) A 4,4'-DDD	5.802	6.888	294.2E6	3614.3E6	180.941	152.943
17) MA 4,4'-DDT	6.033	7.188	324.8E6	3598.8E6	185.642	159.497
20) A Methoxychlor	6.580	7.645	808.3E6	7697.1E6	856.107	724.362

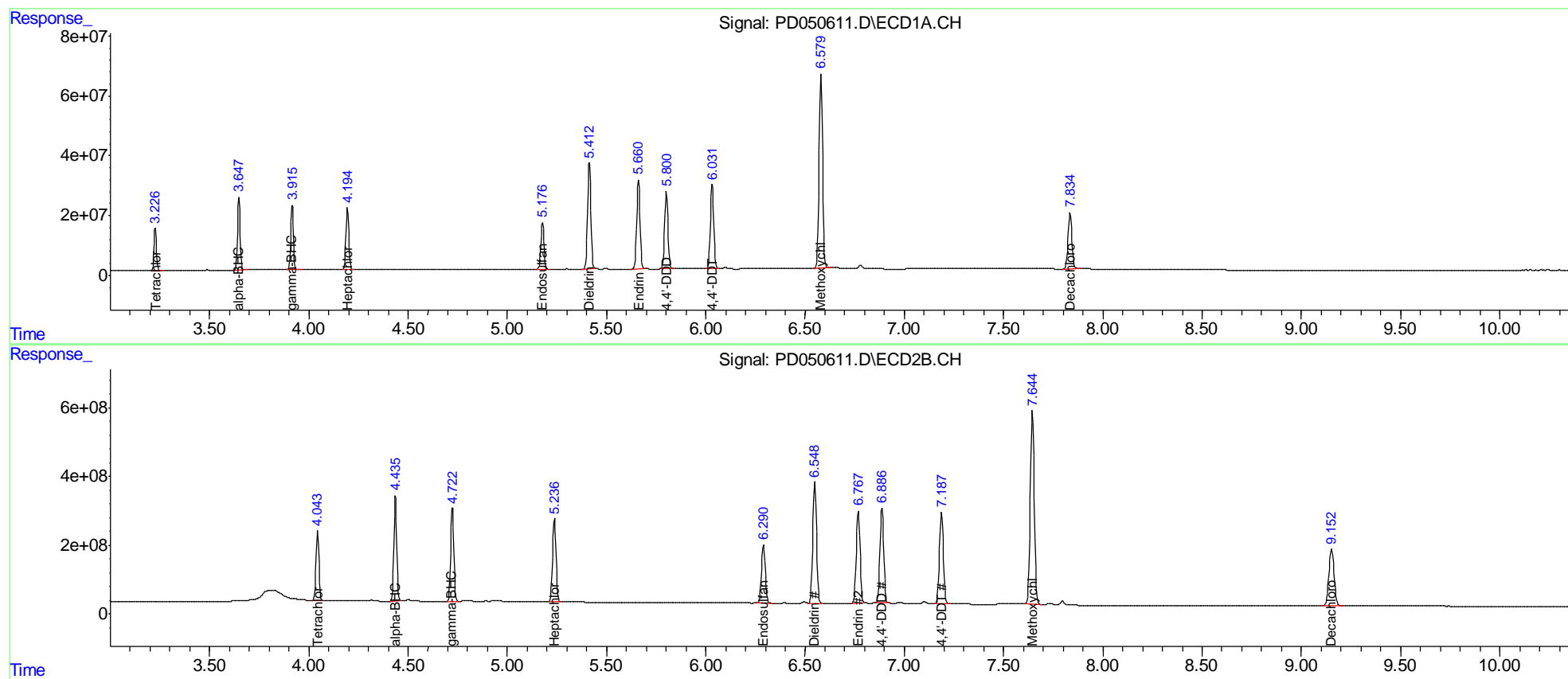
(f)=RT Delta > 1/2 Window (#)=Amounts differ by > 25% (m)=manual int.

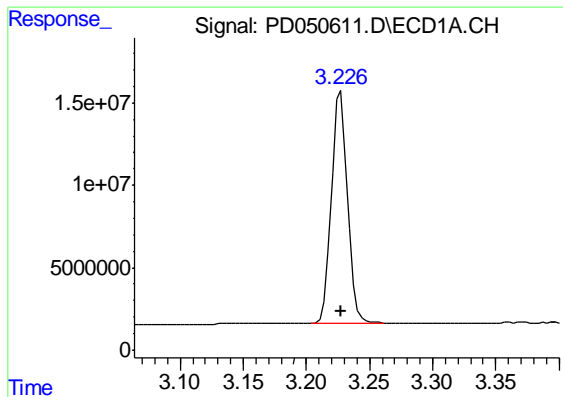
Data Path : Z:\pestpcbsrv\HPCHEM1\ECD_D\Data\PD120318\
 Data File : PD050611.D
 Signal(s) : Signal #1: ECD1A.CH Signal #2: ECD2B.CH
 Acq On : 03 Dec 2018 18:44
 Operator : AJ\SJ
 Sample : INDA501
 Misc :
 ALS Vial : 17 Sample Multiplier: 1

Instrument :
 ECD_D
 ClientSampleId :
 INDA501

Integration File signal 1: autoint1.e
 Integration File signal 2: autoint2.e
 Quant Time: Dec 03 19:03:26 2018
 Quant Method : Z:\pestpcbsrv\HPCHEM1\ECD_D\Method\PD120318CLP.M
 Quant Title : GC Extractables
 QLast Update : Mon Dec 03 18:33:18 2018
 Response via : Initial Calibration
 Integrator: ChemStation 6890 Scale Mode: Large solvent peaks clipped

Volume Inj. : 1 µl
 Signal #1 Phase : ZB-MR2 Signal #2 Phase: ZB-MR1
 Signal #1 Info : 30M x 0.32mm x0.2 Signal #2 Info : 30M x 0.32mm x 0.50µm

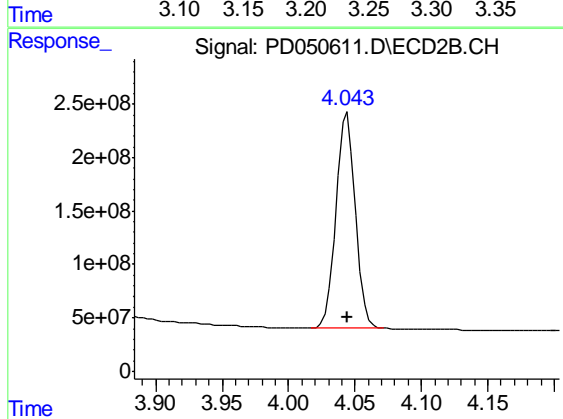




#1 Tetrachloro-m-xylene

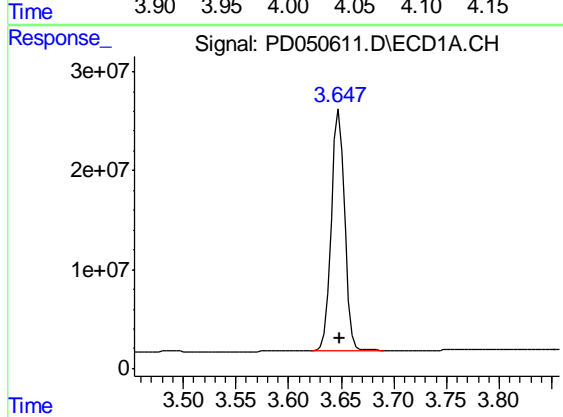
R.T.: 3.227 min
Delta R.T.: 0.000 min
Response: 125516285
Conc: 85.59 ng/ml

Instrument :
ECD_D
ClientSampled :
INDA501



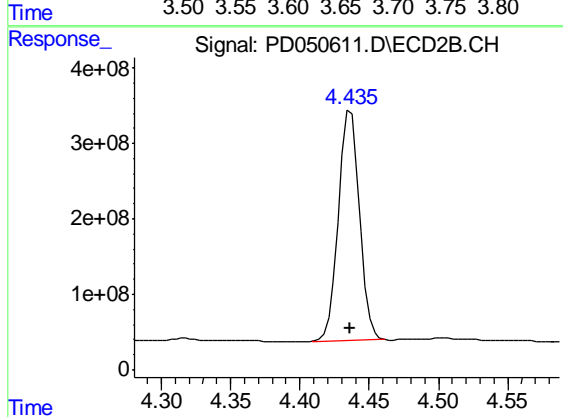
#1 Tetrachloro-m-xylene

R.T.: 4.044 min
Delta R.T.: 0.000 min
Response: 2069800754
Conc: 74.81 ng/ml



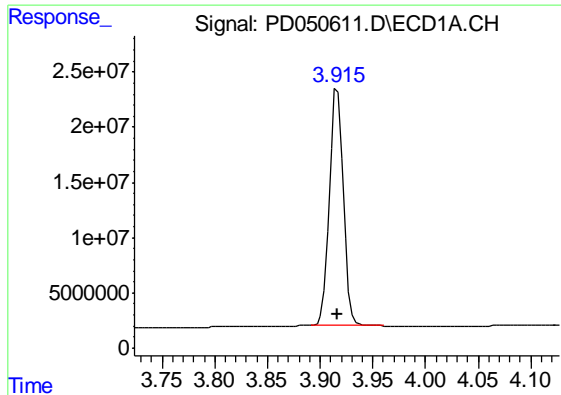
#2 alpha-BHC

R.T.: 3.648 min
Delta R.T.: 0.000 min
Response: 212761053
Conc: 91.67 ng/ml



#2 alpha-BHC

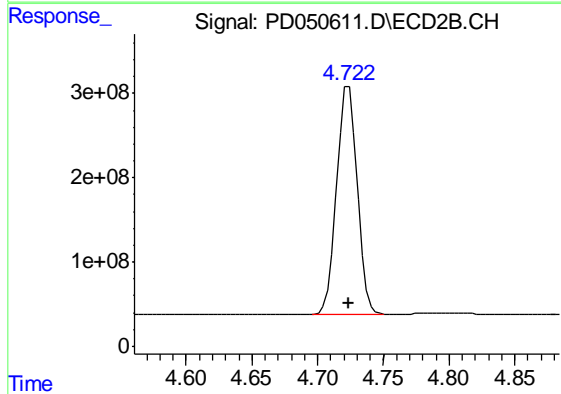
R.T.: 4.437 min
Delta R.T.: 0.000 min
Response: 3228985684
Conc: 77.36 ng/ml



#3 gamma-BHC (Lindane)

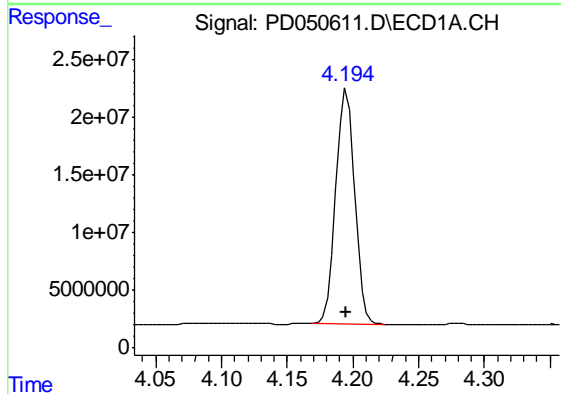
R.T.: 3.917 min
Delta R.T.: 0.000 min
Response: 197794001
Conc: 89.18 ng/ml

Instrument :
ECD_D
ClientSampleId :
INDA501



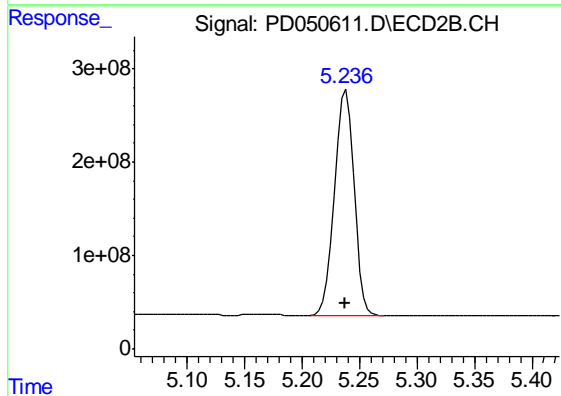
#3 gamma-BHC (Lindane)

R.T.: 4.724 min
Delta R.T.: 0.000 min
Response: 2946105860
Conc: 76.63 ng/ml



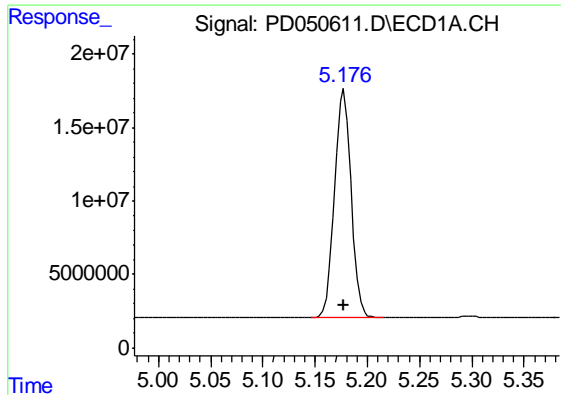
#4 Heptachlor

R.T.: 4.195 min
Delta R.T.: 0.000 min
Response: 202779214
Conc: 89.26 ng/ml



#4 Heptachlor

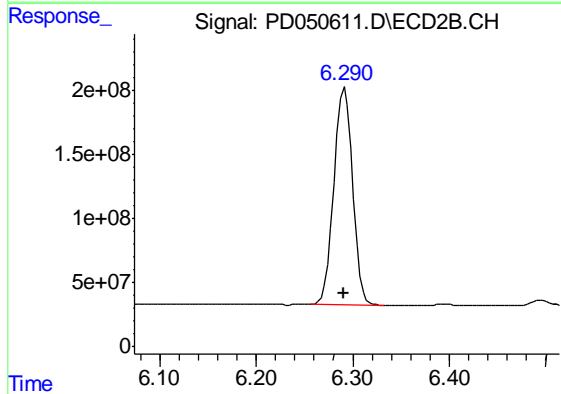
R.T.: 5.238 min
Delta R.T.: 0.000 min
Response: 2905672652
Conc: 73.79 ng/ml



#9 Endosulfan I

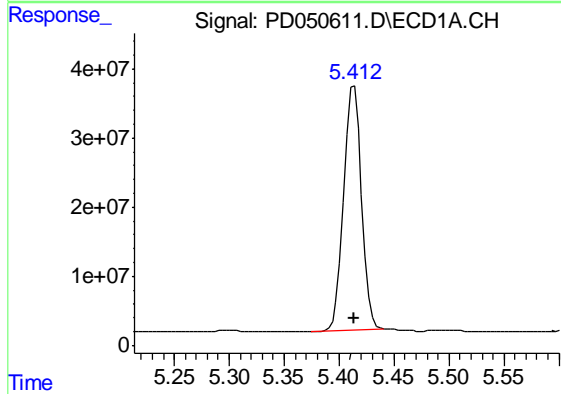
R.T.: 5.178 min
Delta R.T.: 0.000 min
Response: 171139504
Conc: 86.50 ng/ml

Instrument :
ECD_D
ClientSampled :
INDA501



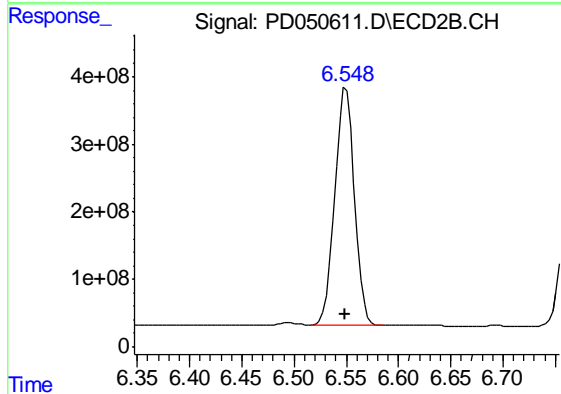
#9 Endosulfan I

R.T.: 6.292 min
Delta R.T.: 0.001 min
Response: 2230616652
Conc: 73.85 ng/ml



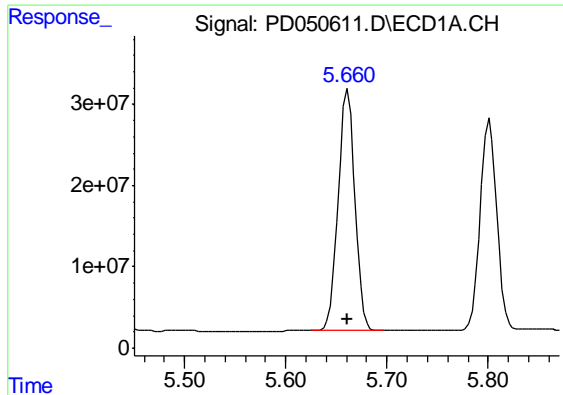
#13 Dieldrin

R.T.: 5.414 min
Delta R.T.: 0.000 min
Response: 396613854
Conc: 178.12 ng/ml



#13 Dieldrin

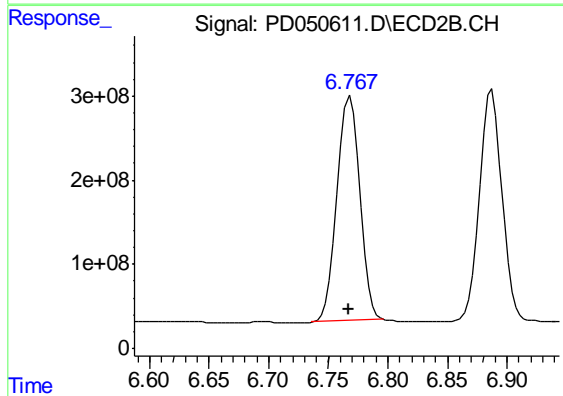
R.T.: 6.550 min
Delta R.T.: 0.001 min
Response: 4611243365
Conc: 150.10 ng/ml



#14 Endrin

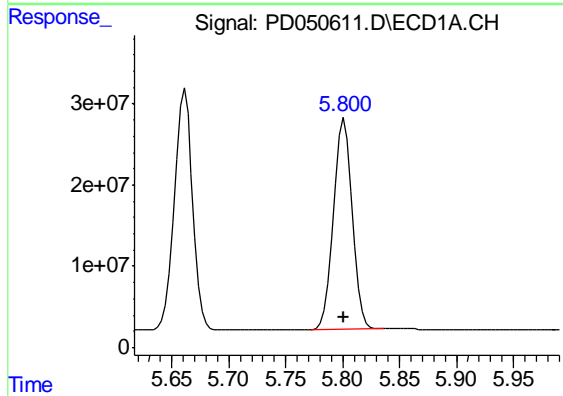
R.T.: 5.661 min
Delta R.T.: 0.000 min
Response: 338934382
Conc: 179.01 ng/ml

Instrument :
ECD_D
ClientSampleId :
INDA501



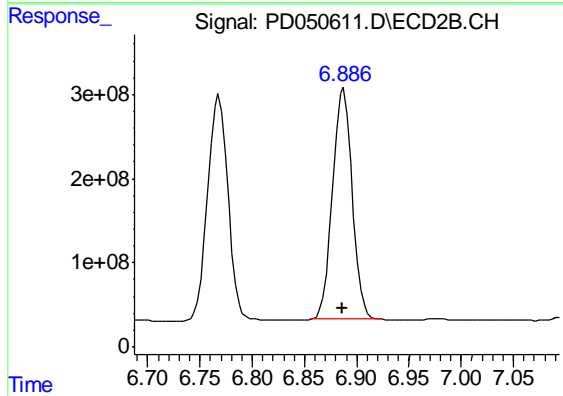
#14 Endrin

R.T.: 6.768 min
Delta R.T.: 0.000 min
Response: 3542271500
Conc: 153.31 ng/ml



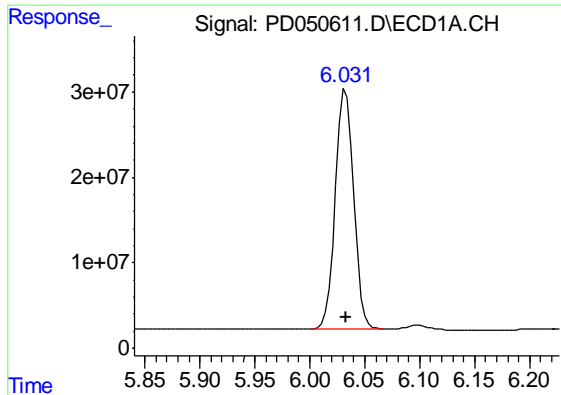
#16 4,4'-DDD

R.T.: 5.802 min
Delta R.T.: 0.000 min
Response: 294208030
Conc: 180.94 ng/ml



#16 4,4'-DDD

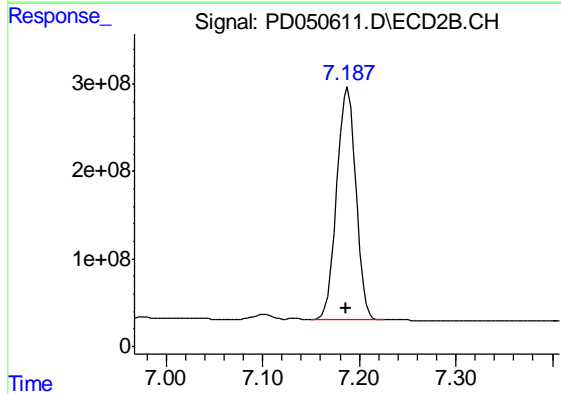
R.T.: 6.888 min
Delta R.T.: 0.001 min
Response: 3614310738
Conc: 152.94 ng/ml



#17 4,4'-DDT

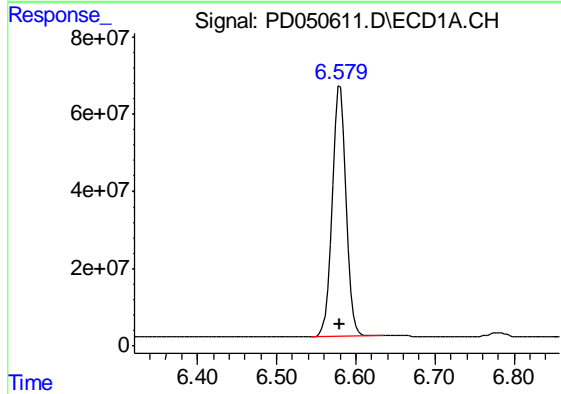
R.T.: 6.033 min
Delta R.T.: 0.000 min
Response: 324838449
Conc: 185.64 ng/ml

Instrument :
ECD_D
ClientSampled :
INDA501



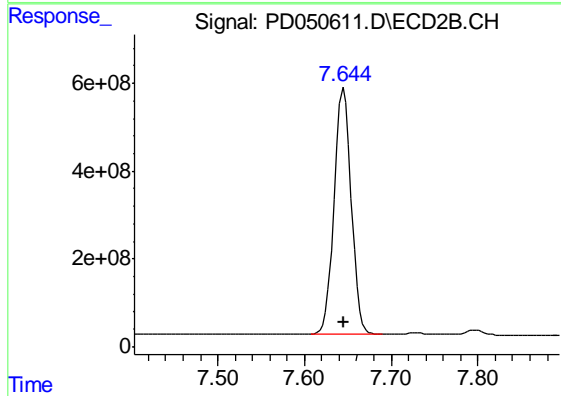
#17 4,4'-DDT

R.T.: 7.188 min
Delta R.T.: 0.000 min
Response: 3598783040
Conc: 159.50 ng/ml



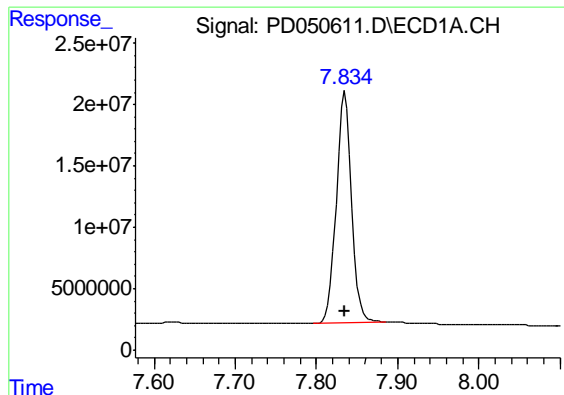
#20 Methoxychlor

R.T.: 6.580 min
Delta R.T.: 0.000 min
Response: 808263346
Conc: 856.11 ng/ml



#20 Methoxychlor

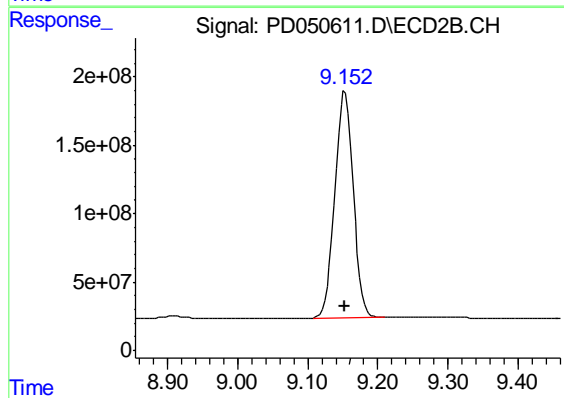
R.T.: 7.645 min
Delta R.T.: 0.000 min
Response: 7697075338
Conc: 724.36 ng/ml



#27 Decachlorobiphenyl

R.T.: 7.835 min
Delta R.T.: 0.000 min
Response: 248084804
Conc: 157.79 ng/ml

Instrument :
ECD_D
ClientSampleId :
INDA501



#27 Decachlorobiphenyl

R.T.: 9.153 min
Delta R.T.: 0.000 min
Response: 3011773055
Conc: 143.48 ng/ml