

Quantitation Report (Qedit)

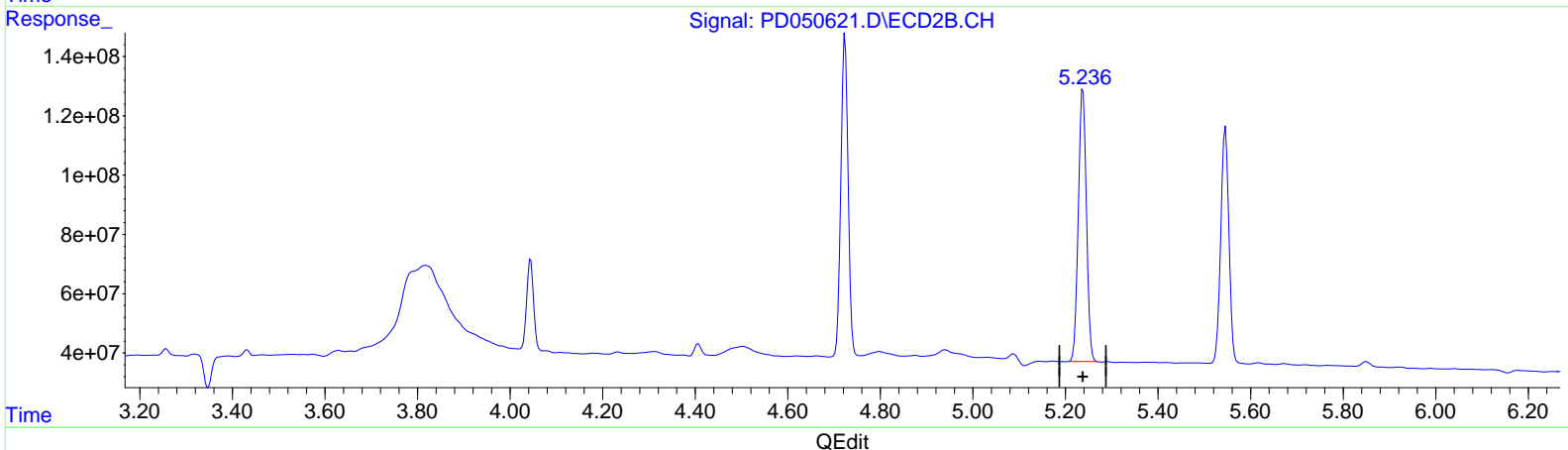
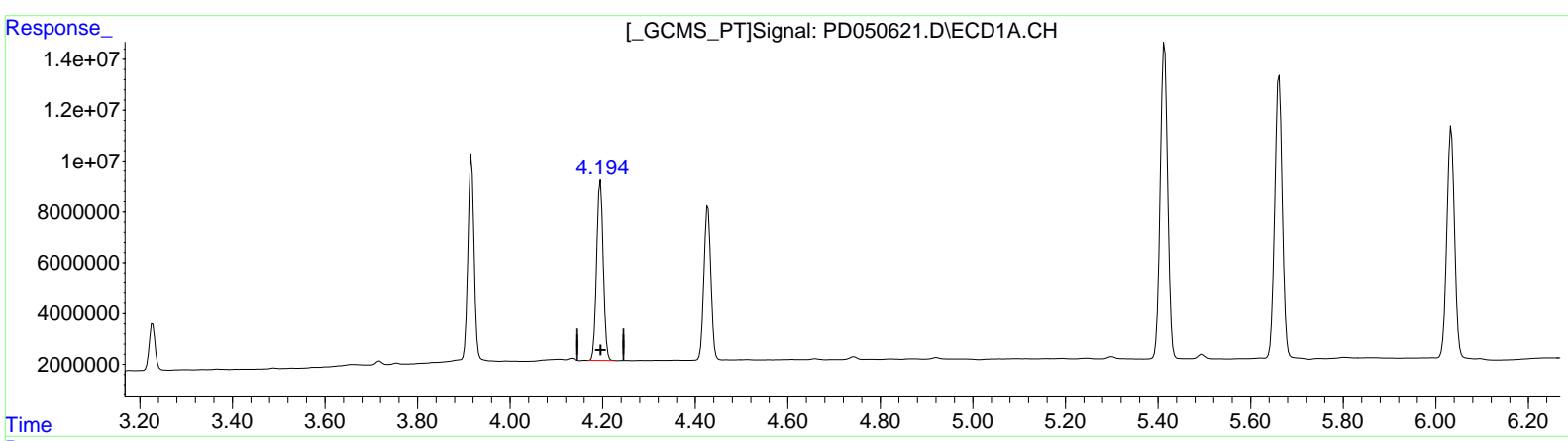
Data Path : Z:\pestpcbsrv\HPCHEM1\ECD_D\Data\PD120318\
 Data File : PD050621.D
 Signal(s) : Signal #1: ECD1A.CH Signal #2: ECD2B.CH
 Acq On : 03 Dec 2018 21:04
 Operator : AJ\SJ
 Sample : J5979-03MS
 Misc :
 ALS Vial : 26 Sample Multiplier: 1

Instrument :
 ECD_D
Client Sampled :
 ETO65MS

Manual Integrations
APPROVED
 apatel
 12/4/2018 8:24:56 AM

Integration File signal 1: autoint1.e
 Integration File signal 2: autoint2.e
 Quant Time: Dec 04 01:10:27 2018
 Quant Method : Z:\pestpcbsrv\HPCHEM1\ECD_D\Method\PD120318CLP.M
 Quant Title : GC Extractables
 QLast Update : Tue Dec 04 00:43:01 2018
 Response via : Initial Calibration
 Integrator: ChemStation 6890 Scale Mode: Large solvent peaks clipped

Volume Inj. : 1 µl
 Signal #1 Phase : ZB-MR2 Signal #2 Phase: ZB-MR1
 Signal #1 Info : 30M x 0.32mm x0.2 Signal #2 Info : 30M x 0.32mm x 0.50µm



(4) Heptachlor (MA)
 4.194min 29.794 ng/ml m
 response 70477425

(4) Heptachlor #2 (MA)
 5.238min 27.590 ng/ml
 response 1113275122

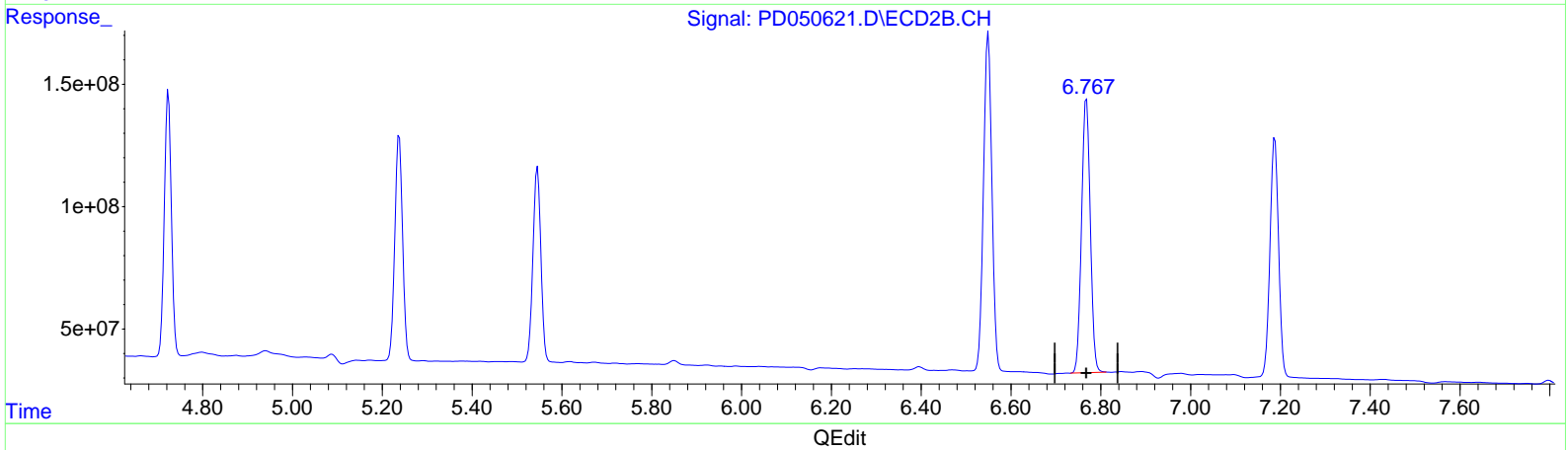
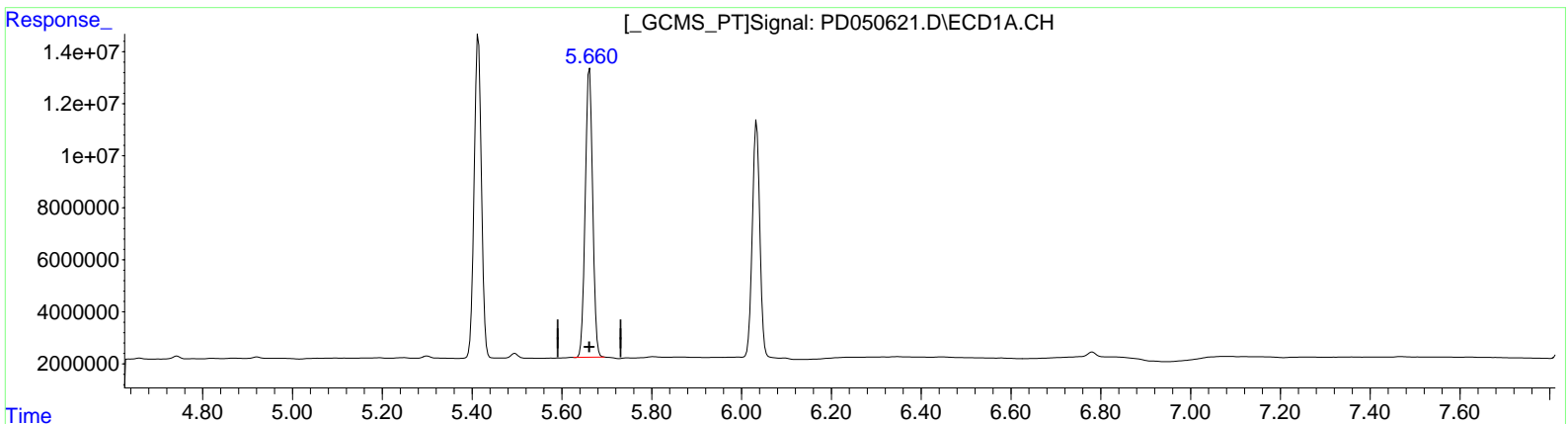
Data Path : Z:\pestpcbsrv\HPCHEM1\ECD_D\Data\PD120318\
 Data File : PD050621.D
 Signal(s) : Signal #1: ECD1A.CH Signal #2: ECD2B.CH
 Acq On : 03 Dec 2018 21:04
 Operator : AJ\SJ
 Sample : J5979-03MS
 Misc :
 ALS Vial : 26 Sample Multiplier: 1

Instrument :
 ECD_D
ClientSampled :
 ETO65MS

Manual Integrations
APPROVED
 apatel
 12/4/2018 8:24:56 AM

Integration File signal 1: autoint1.e
 Integration File signal 2: autoint2.e
 Quant Time: Dec 04 01:10:27 2018
 Quant Method : Z:\pestpcbsrv\HPCHEM1\ECD_D\Method\PD120318CLP.M
 Quant Title : GC Extractables
 QLast Update : Tue Dec 04 00:43:01 2018
 Response via : Initial Calibration
 Integrator: ChemStation 6890 Scale Mode: Large solvent peaks clipped

Volume Inj. : 1 µl
 Signal #1 Phase : ZB-MR2 Signal #2 Phase: ZB-MR1
 Signal #1 Info : 30M x 0.32mm x 0.2 Signal #2 Info : 30M x 0.32mm x 0.50µm



(14) Endrin (MA)
 5.662min 64.614 ng/ml
 response 127218673

(14) Endrin #2 (MA)
 6.767min 63.685 ng/ml m
 response 1510507982

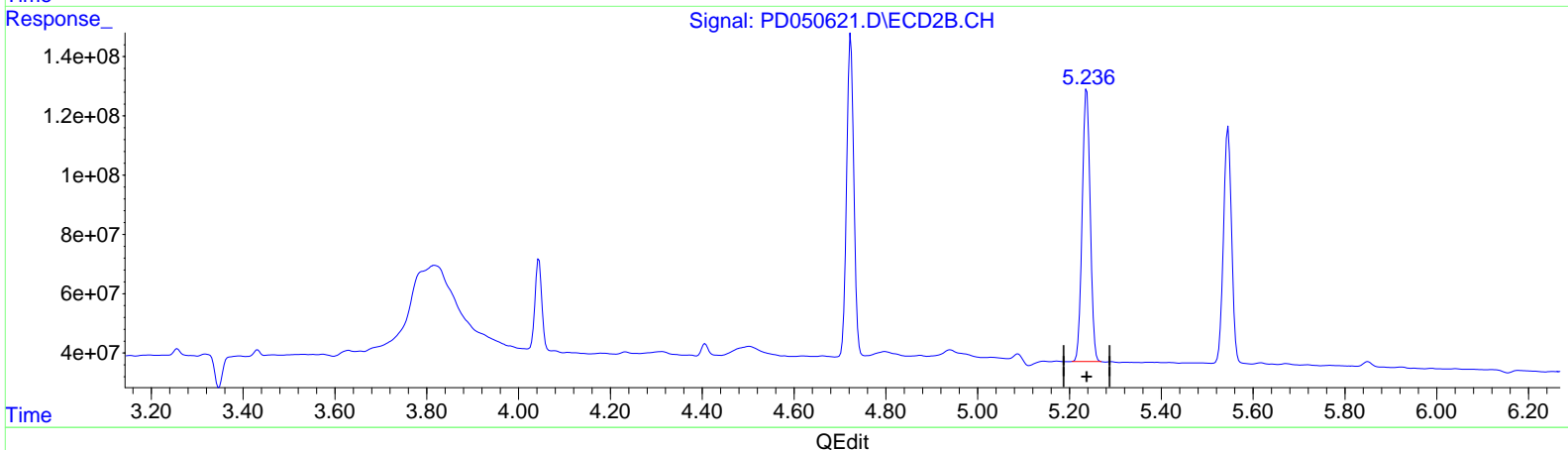
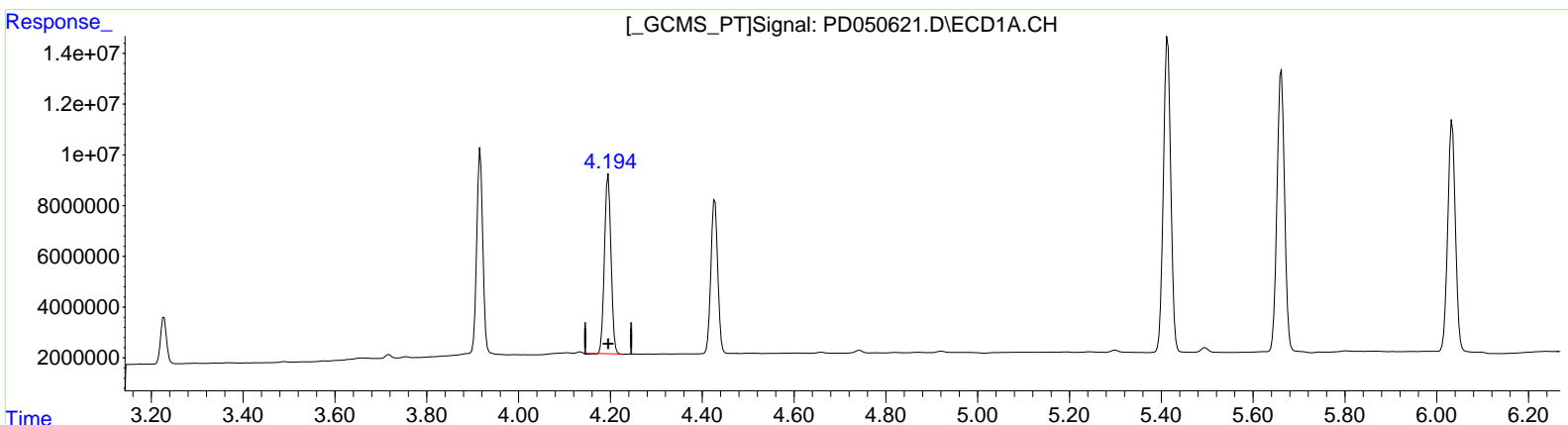
Data Path : Z:\pestpcbsrv\HPCHEM1\ECD_D\Data\PD120318\
 Data File : PD050621.D
 Signal(s) : Signal #1: ECD1A.CH Signal #2: ECD2B.CH
 Acq On : 03 Dec 2018 21:04
 Operator : AJ\SJ
 Sample : J5979-03MS
 Misc :
 ALS Vial : 26 Sample Multiplier: 1

Instrument :
 ECD_D
ClientSampled :
 ETO65MS

Manual Integrations
APPROVED
 apatel
 12/4/2018 8:24:56 AM

Integration File signal 1: autoint1.e
 Integration File signal 2: autoint2.e
 Quant Time: Dec 04 04:07:19 2018
 Quant Method : Z:\pestpcbsrv\HPCHEM1\ECD_D\Method\PD120318CLP.M
 Quant Title : GC Extractables
 QLast Update : Tue Dec 04 00:43:01 2018
 Response via : Initial Calibration
 Integrator: ChemStation 6890 Scale Mode: Large solvent peaks clipped

Volume Inj. : 1 µl
 Signal #1 Phase : ZB-MR2 Signal #2 Phase: ZB-MR1
 Signal #1 Info : 30M x 0.32mm x0.2 Signal #2 Info : 30M x 0.32mm x 0.50µm



(4) Heptachlor (MA)
 4.195min 29.476 ng/ml
 response 69725982

(4) Heptachlor #2 (MA)
 5.238min 27.590 ng/ml
 response 1113275122

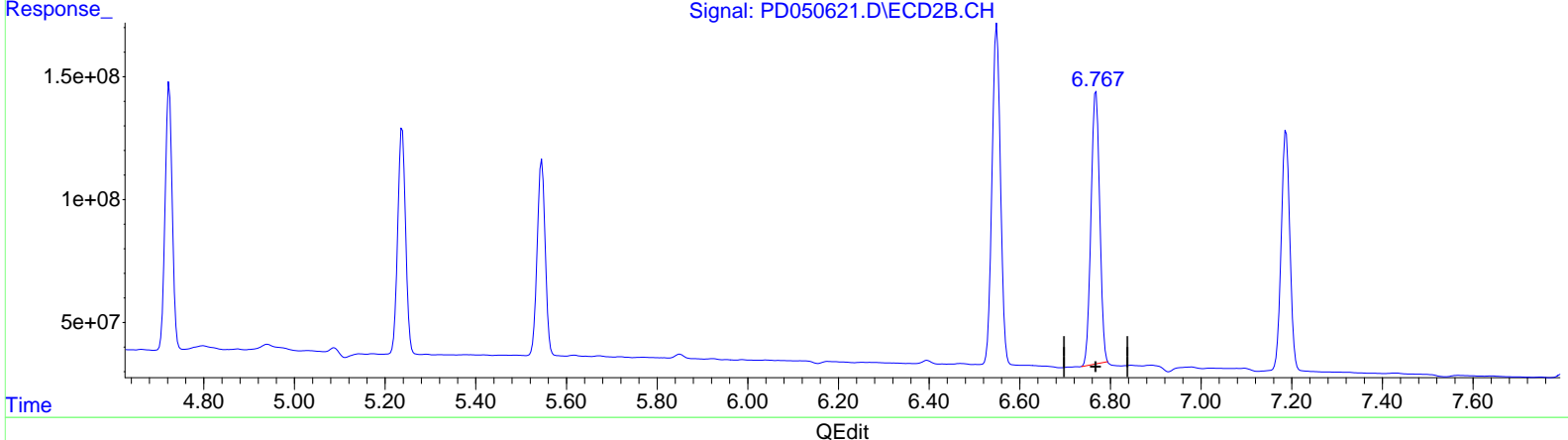
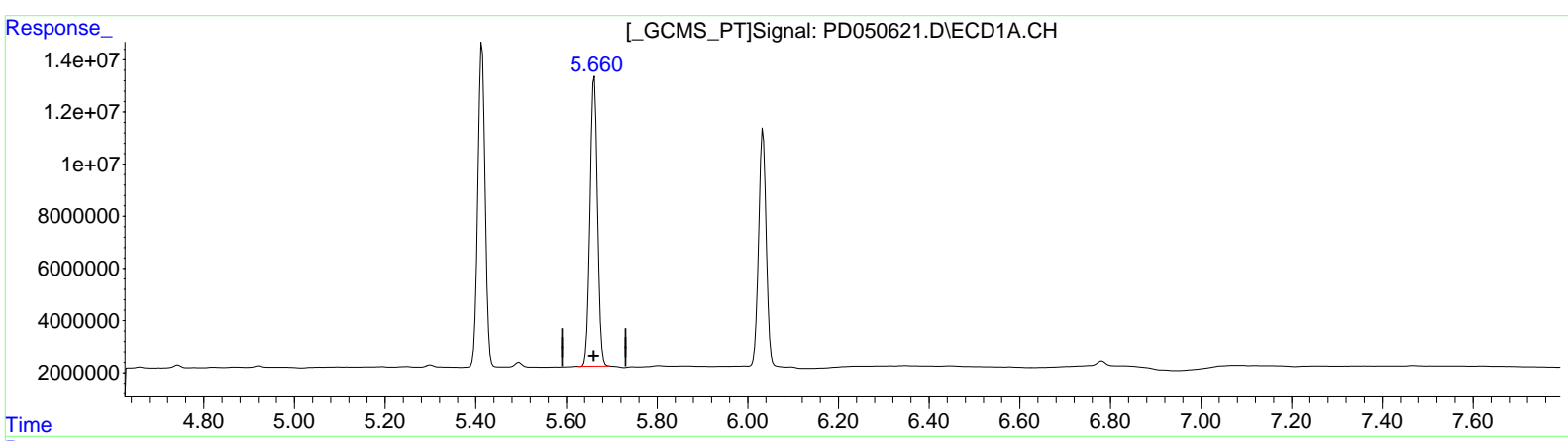
Data Path : Z:\pestpcbsrv\HPCHEM1\ECD_D\Data\PD120318\
 Data File : PD050621.D
 Signal(s) : Signal #1: ECD1A.CH Signal #2: ECD2B.CH
 Acq On : 03 Dec 2018 21:04
 Operator : AJ\SJ
 Sample : J5979-03MS
 Misc :
 ALS Vial : 26 Sample Multiplier: 1

Instrument :
 ECD_D
ClientSampled :
 ETO65MS

Manual Integrations
APPROVED
 apatel
 12/4/2018 8:24:56 AM

Integration File signal 1: autoint1.e
 Integration File signal 2: autoint2.e
 Quant Time: Dec 04 04:07:19 2018
 Quant Method : Z:\pestpcbsrv\HPCHEM1\ECD_D\Method\PD120318CLP.M
 Quant Title : GC Extractables
 QLast Update : Tue Dec 04 00:43:01 2018
 Response via : Initial Calibration
 Integrator: ChemStation 6890 Scale Mode: Large solvent peaks clipped

Volume Inj. : 1 µl
 Signal #1 Phase : ZB-MR2 Signal #2 Phase: ZB-MR1
 Signal #1 Info : 30M x 0.32mm x0.2 Signal #2 Info : 30M x 0.32mm x 0.50µm



(14) Endrin (MA)
 5.662min 64.614 ng/ml
 response 127218673

(14) Endrin #2 (MA)
 6.768min 62.214 ng/ml
 response 1475618741