

Data Path : Z:\pestpcbsrv\HPCHEM1\ECD_D\Data\PD120321\
 Data File : PD067200.D
 Signal(s) : Signal #1: ECD1A.ch Signal #2: ECD2B.ch
 Acq On : 02 Dec 2021 12:12
 Operator : AR\AJ
 Sample : M4833-11
 Misc :
 ALS Vial : 16 Sample Multiplier: 1

Instrument :
 ECD_D
ClientSampleId :
 ESQM9

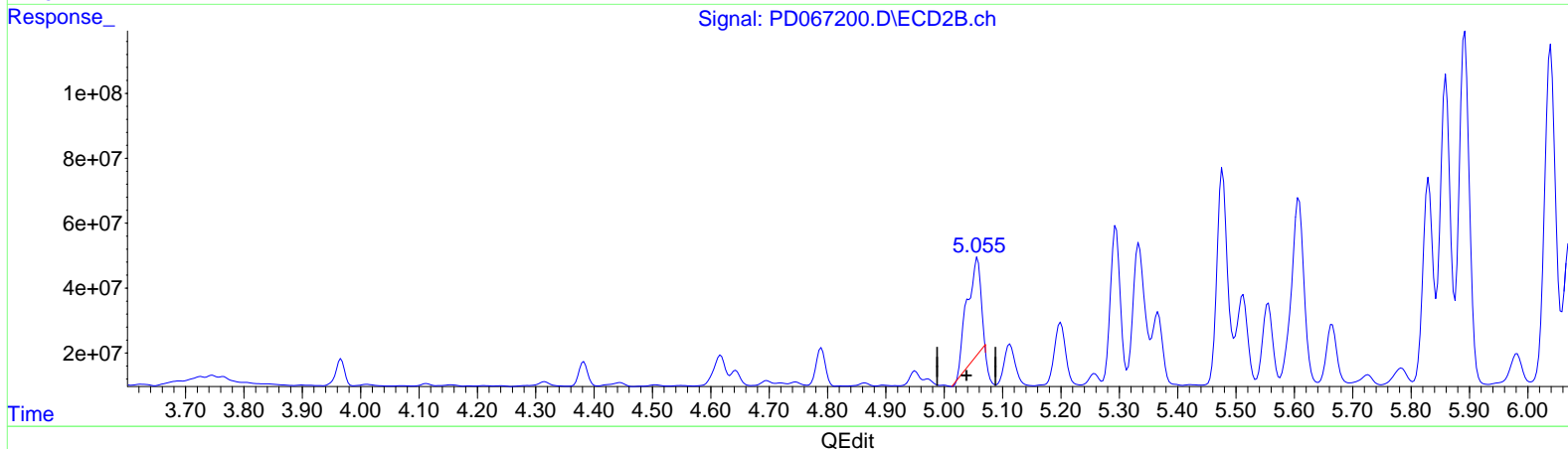
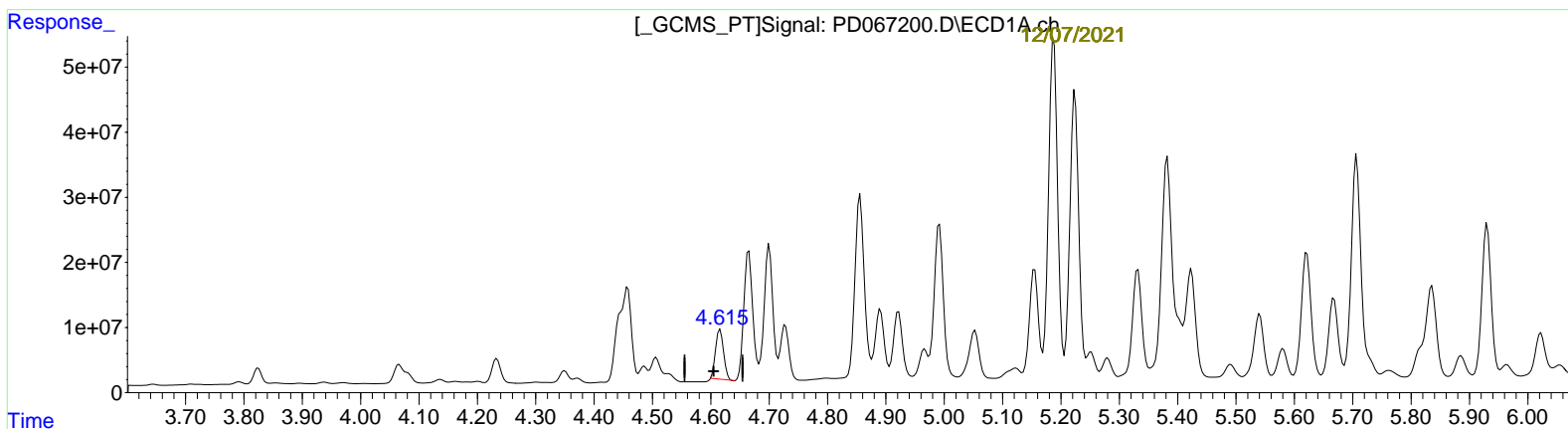
Manual IntegrationsAPPROVED

Reviewed By :Abdul
 Mirza

Integration File signal 1: autoint1.e
 Integration File signal 2: autoint2.e
 Quant Time: Dec 07 01:14:51 2021
 Quant Method : Z:\pestpcbsrv\HPCHEM1\ECD_D\Method\PD112921CLP.M
 Quant Title : GC Extractables
 QLast Update : Tue Nov 30 05:28:01 2021
 Response via : Initial Calibration
 Integrator: ChemStation

12/03/2021
Supervised By :mohammad
ahmed

Volume Inj. : 1 µl
 Signal #1 Phase : ZB-MR2 Signal #2 Phase: ZB-MR1
 Signal #1 Info : 30M x 0.32mm x0.2 Signal #2 Info : 30M x 0.32mm x 0.50µm



(7) delta-BHC (B)
 4.616min 25.282 ng/ml
 response 72317326

(7) delta-BHC #2 (B)
 5.057min 55.926 ng/ml
 response 495019751

Data Path : Z:\pestpcbsrv\HPCHEM1\ECD_D\Data\PD120321\
Data File : PD067200.D
Signal(s) : Signal #1: ECD1A.ch Signal #2: ECD2B.ch
Acq On : 02 Dec 2021 12:12
Operator : AR\AJ
Sample : M4833-11
Misc :
ALS Vial : 16 Sample Multiplier: 1

Instrument :
ECD_D
ClientSampleId :
ESQM9

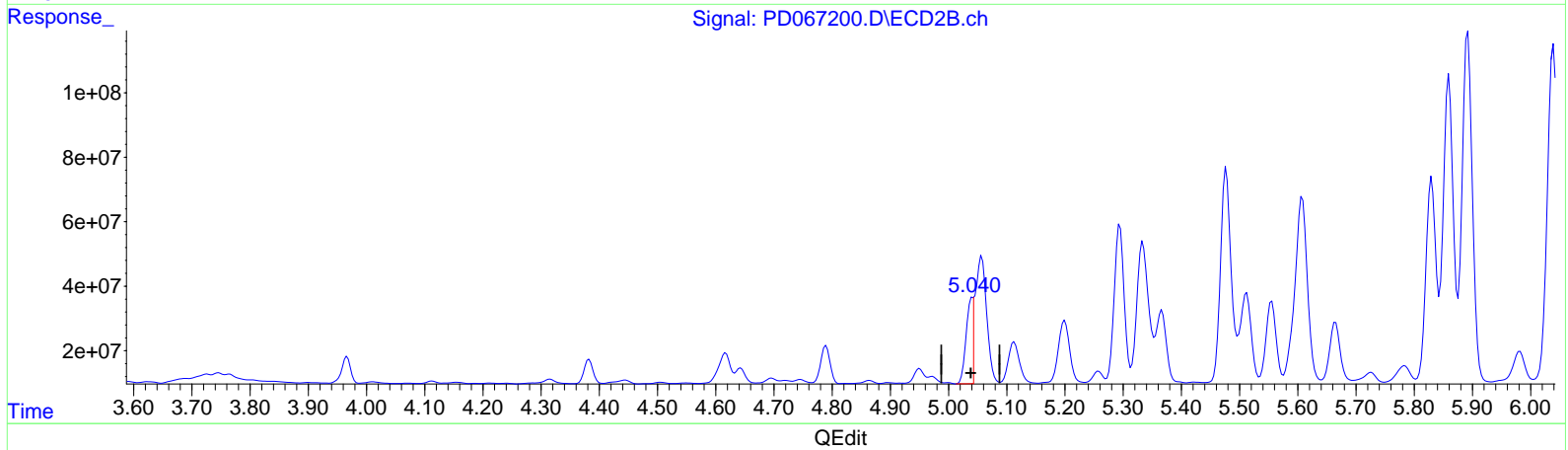
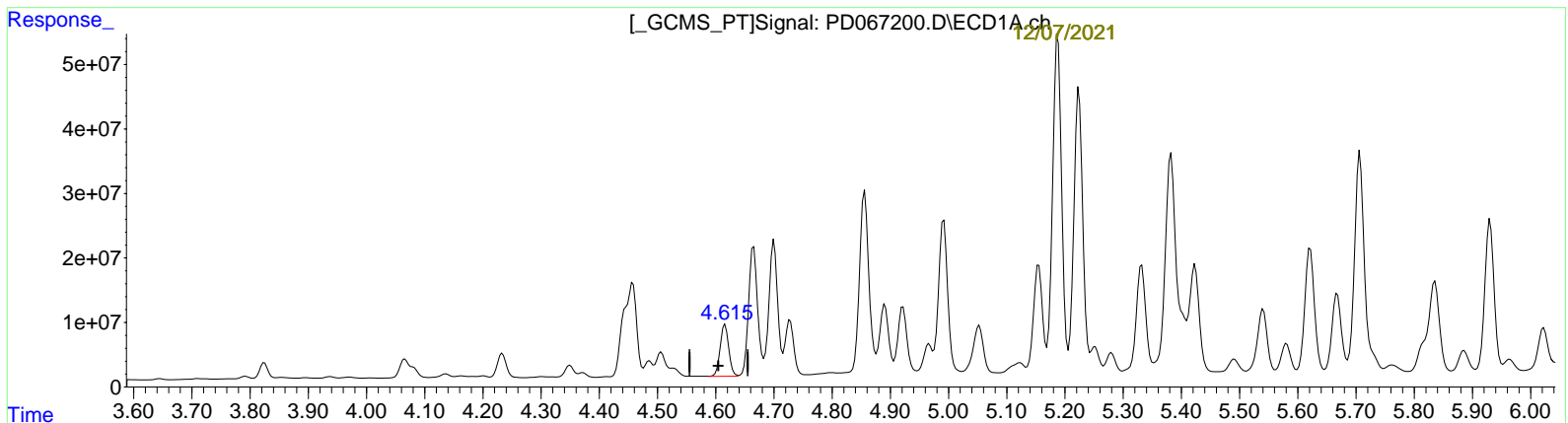
Manual Integrations APPROVED

Reviewed By : Abdul
Mirza

Integration File signal 1: autoint1.e
Integration File signal 2: autoint2.e
Quant Time: Dec 07 01:14:51 2021
Quant Method : Z:\pestpcbsrv\HPCHEM1\ECD_D\Method\PD112921CLP.M
Quant Title : GC Extractables
QLast Update : Tue Nov 30 05:28:01 2021
Response via : Initial Calibration
Integrator: ChemStation

12/03/2021
Supervised By : mohammad
ahmed

Volume Inj. : 1 µl
Signal #1 Phase : ZB-MR2 Signal #2 Phase: ZB-MR1
Signal #1 Info : 30M x 0.32mm x 0.2 Signal #2 Info : 30M x 0.32mm x 0.50µm



(7) delta-BHC (B)
4.615min 28.941 ng/ml m
response 82785318

(7) delta-BHC #2 (B)
5.040min 27.860 ng/ml m
response 246596121

Data Path : Z:\pestpcbsrv\HPCHEM1\ECD_D\Data\PD120321\
Data File : PD067200.D
Signal(s) : Signal #1: ECD1A.ch Signal #2: ECD2B.ch
Acq On : 02 Dec 2021 12:12
Operator : AR\AJ
Sample : M4833-11
Misc :
ALS Vial : 16 Sample Multiplier: 1

Instrument :
ECD_D
ClientSampleId :
ESQM9

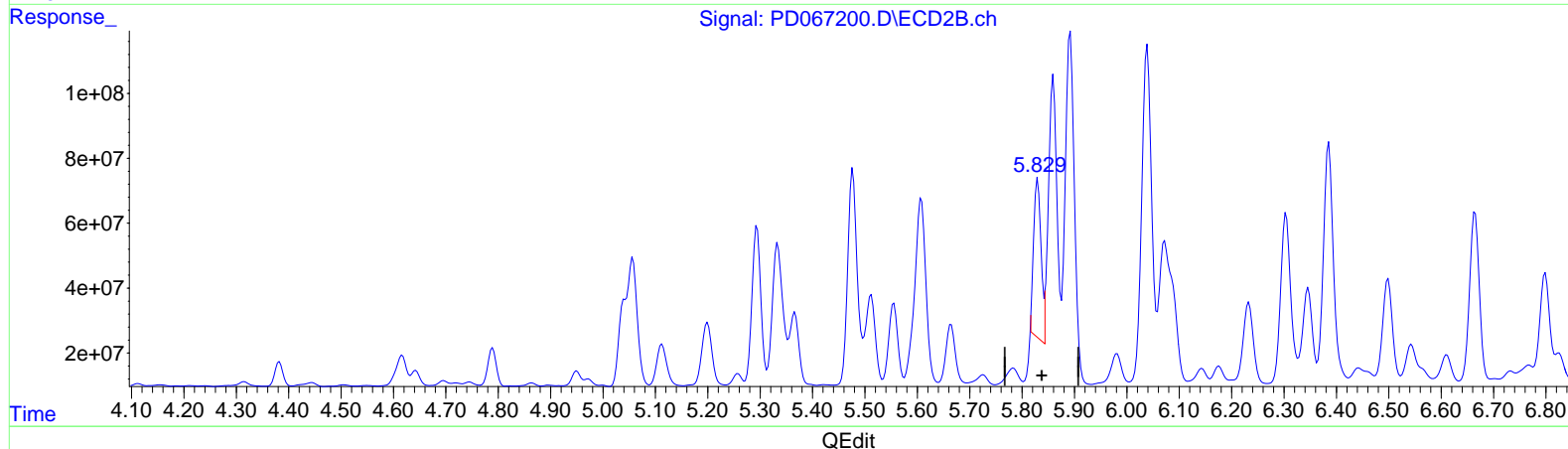
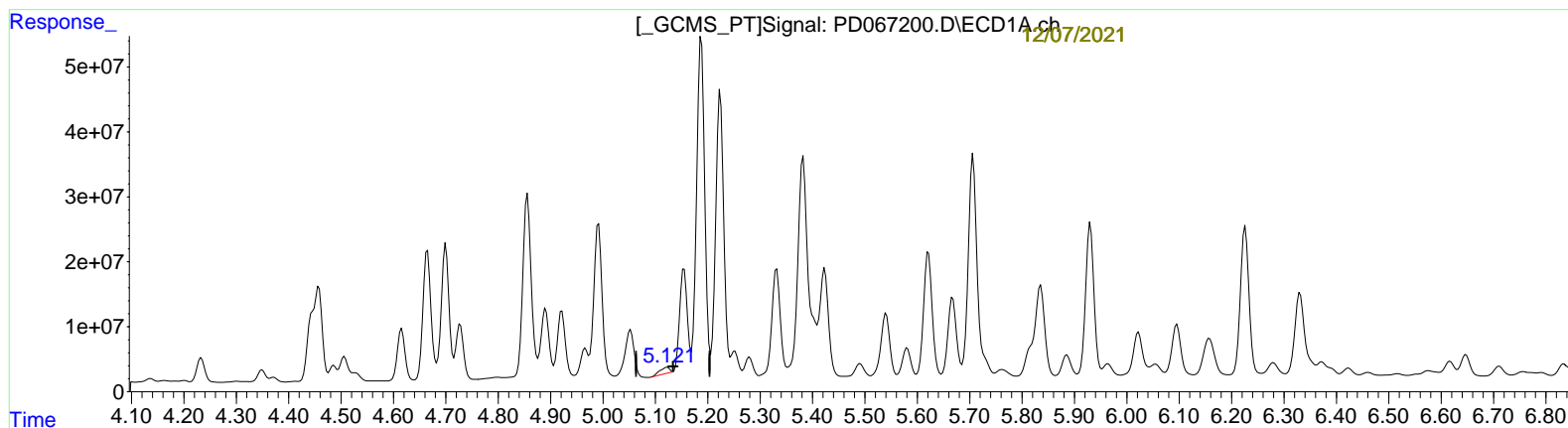
Manual Integrations APPROVED

Reviewed By : Abdul
Mirza

Integration File signal 1: autoint1.e
Integration File signal 2: autoint2.e
Quant Time: Dec 07 01:14:51 2021
Quant Method : Z:\pestpcbsrv\HPCHEM1\ECD_D\Method\PD112921CLP.M
Quant Title : GC Extractables
QLast Update : Tue Nov 30 05:28:01 2021
Response via : Initial Calibration
Integrator: ChemStation

12/03/2021
Supervised By : mohammad
ahmed

Volume Inj. : 1 µl
Signal #1 Phase : ZB-MR2 Signal #2 Phase: ZB-MR1
Signal #1 Info : 30M x 0.32mm x 0.2 Signal #2 Info : 30M x 0.32mm x 0.50µm



(8) Heptachlor epoxide (B)
5.123min 4.388 ng/ml
response 12117275

(8) Heptachlor epoxide #2 (B)
5.830min 68.526 ng/ml
response 480291409

Data Path : Z:\pestpcbsrv\HPCHEM1\ECD_D\Data\PD120321\
 Data File : PD067200.D
 Signal(s) : Signal #1: ECD1A.ch Signal #2: ECD2B.ch
 Acq On : 02 Dec 2021 12:12
 Operator : AR\AJ
 Sample : M4833-11
 Misc :
 ALS Vial : 16 Sample Multiplier: 1

Instrument :
 ECD_D
 ClientSampleId :
 ESQM9

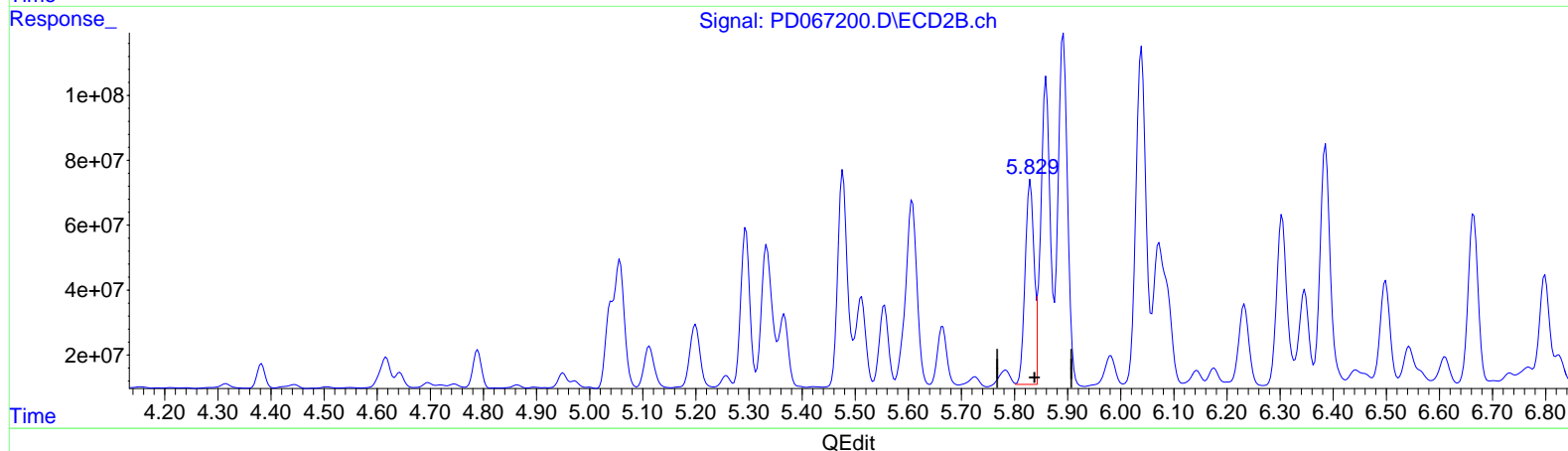
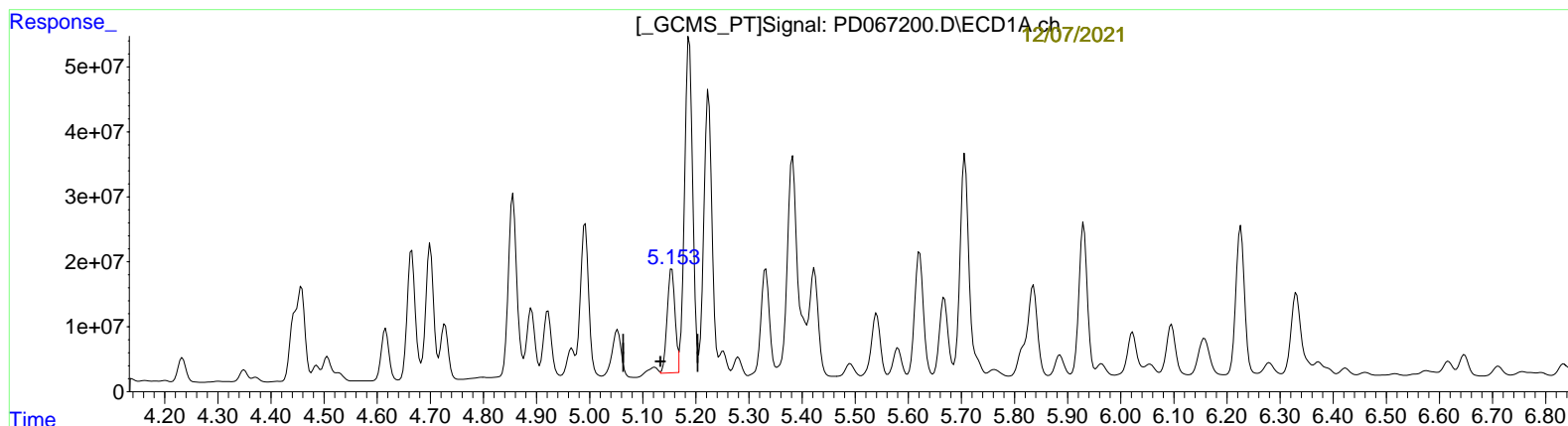
Manual Integrations APPROVED

Reviewed By : Abdul
 Mirza

Integration File signal 1: autoint1.e
 Integration File signal 2: autoint2.e
 Quant Time: Dec 07 01:14:51 2021
 Quant Method : Z:\pestpcbsrv\HPCHEM1\ECD_D\Method\PD112921CLP.M
 Quant Title : GC Extractables
 QLast Update : Tue Nov 30 05:28:01 2021
 Response via : Initial Calibration
 Integrator: ChemStation

12/03/2021
 Supervised By : mohammad
 ahmed

Volume Inj. : 1 µl
 Signal #1 Phase : ZB-MR2 Signal #2 Phase: ZB-MR1
 Signal #1 Info : 30M x 0.32mm x 0.2 Signal #2 Info : 30M x 0.32mm x 0.50µm



(8) Heptachlor epoxide (B)
 5.153min 58.446 ng/ml m
 response 161407327

(8) Heptachlor epoxide #2 (B)
 5.829min 110.341 ng/ml m
 response 773364301

Data Path : Z:\pestpcbsrv\HPCHEM1\ECD_D\Data\PD120321\
 Data File : PD067200.D
 Signal(s) : Signal #1: ECD1A.ch Signal #2: ECD2B.ch
 Acq On : 02 Dec 2021 12:12
 Operator : AR\AJ
 Sample : M4833-11
 Misc :
 ALS Vial : 16 Sample Multiplier: 1

Instrument :
 ECD_D
 ClientSampleId :
 ESQM9

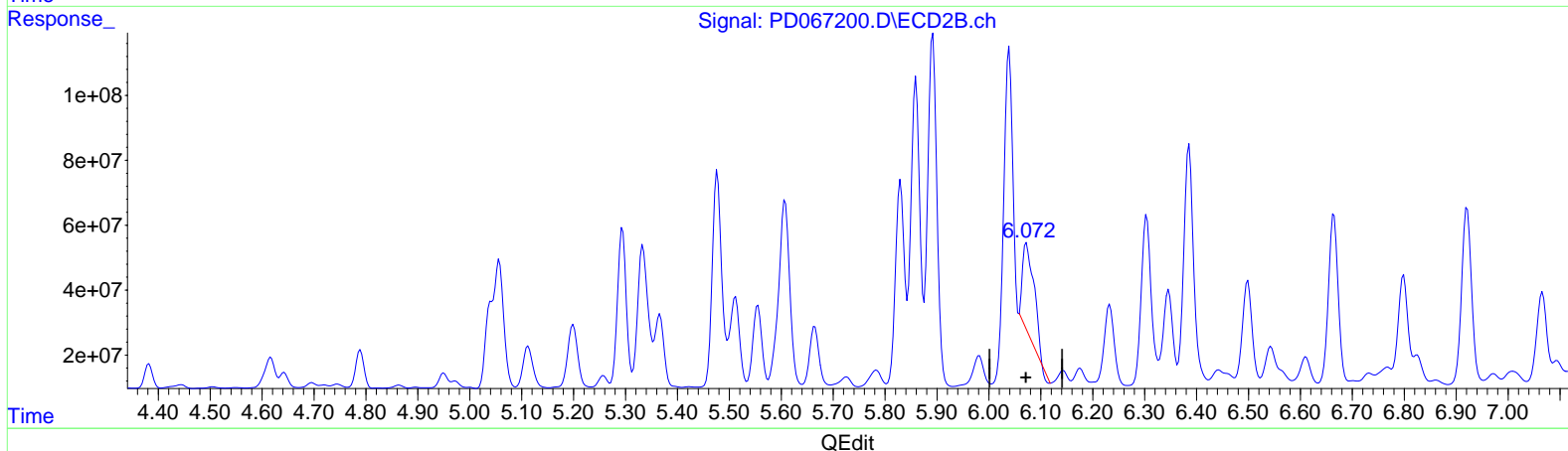
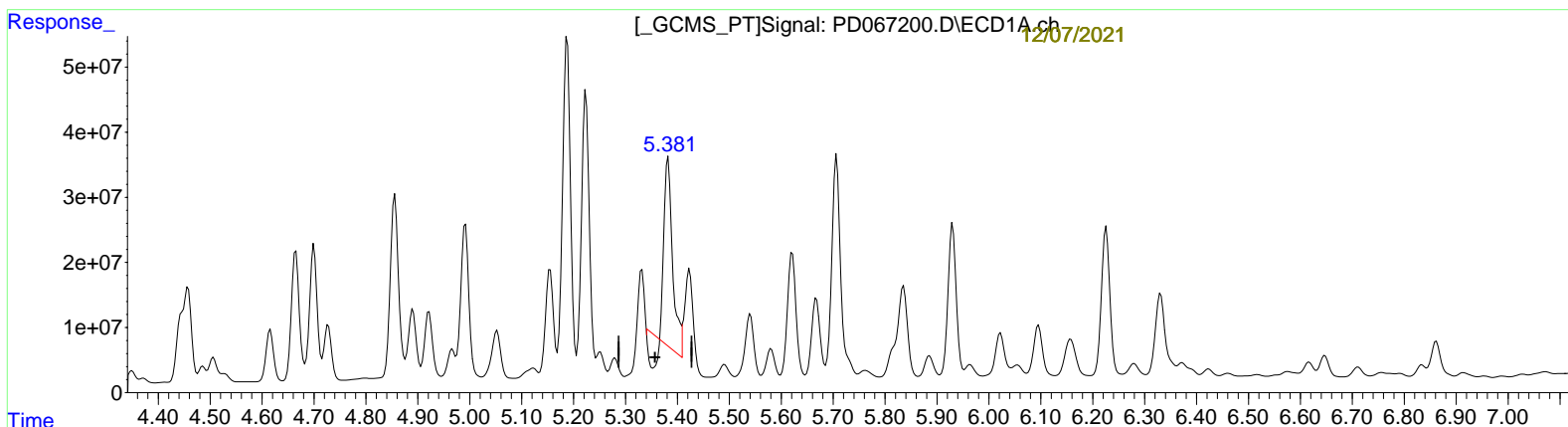
Manual Integrations APPROVED

Reviewed By : Abdul
 Mirza

Integration File signal 1: autoint1.e
 Integration File signal 2: autoint2.e
 Quant Time: Dec 07 01:14:51 2021
 Quant Method : Z:\pestpcbsrv\HPCHEM1\ECD_D\Method\PD112921CLP.M
 Quant Title : GC Extractables
 QLast Update : Tue Nov 30 05:28:01 2021
 Response via : Initial Calibration
 Integrator: ChemStation

12/03/2021
 Supervised By : mohammad
 ahmed

Volume Inj. : 1 µl
 Signal #1 Phase : ZB-MR2 Signal #2 Phase: ZB-MR1
 Signal #1 Info : 30M x 0.32mm x 0.2 Signal #2 Info : 30M x 0.32mm x 0.50µm



(10) trans-Chlordane (B)
 5.382min 108.888 ng/ml
 response 306799323

(10) trans-Chlordane #2 (B)
 6.072min 56.204 ng/ml
 response 426578844

Data Path : Z:\pestpcbsrv\HPCHEM1\ECD_D\Data\PD120321\
 Data File : PD067200.D
 Signal(s) : Signal #1: ECD1A.ch Signal #2: ECD2B.ch
 Acq On : 02 Dec 2021 12:12
 Operator : AR\AJ
 Sample : M4833-11
 Misc :
 ALS Vial : 16 Sample Multiplier: 1

Instrument :
 ECD_D
 ClientSampleId :
 ESQM9

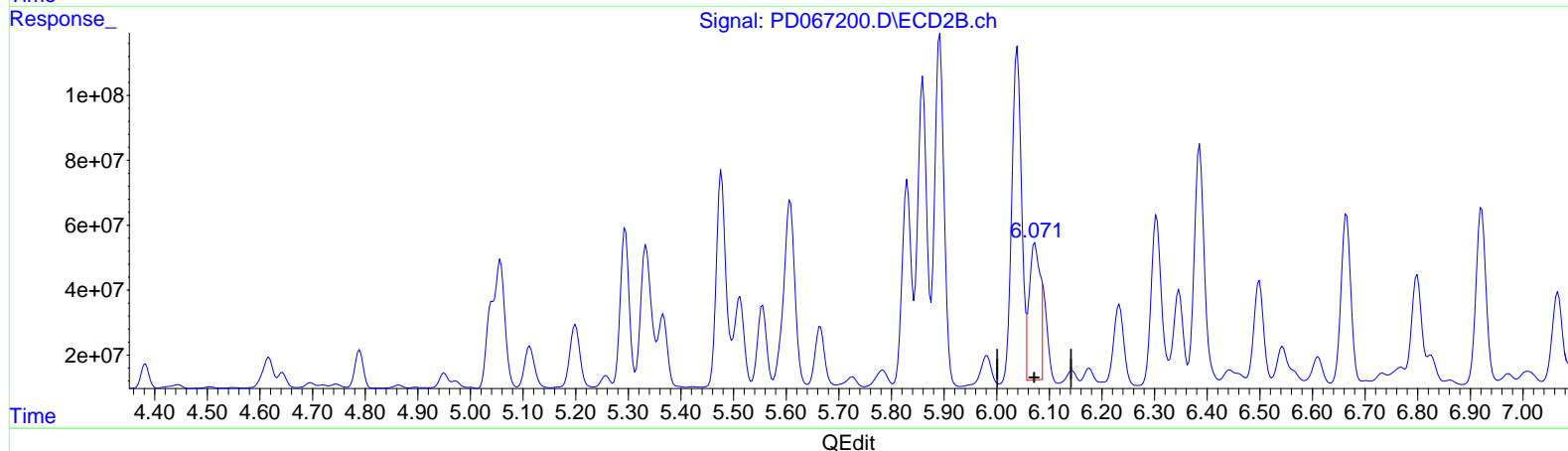
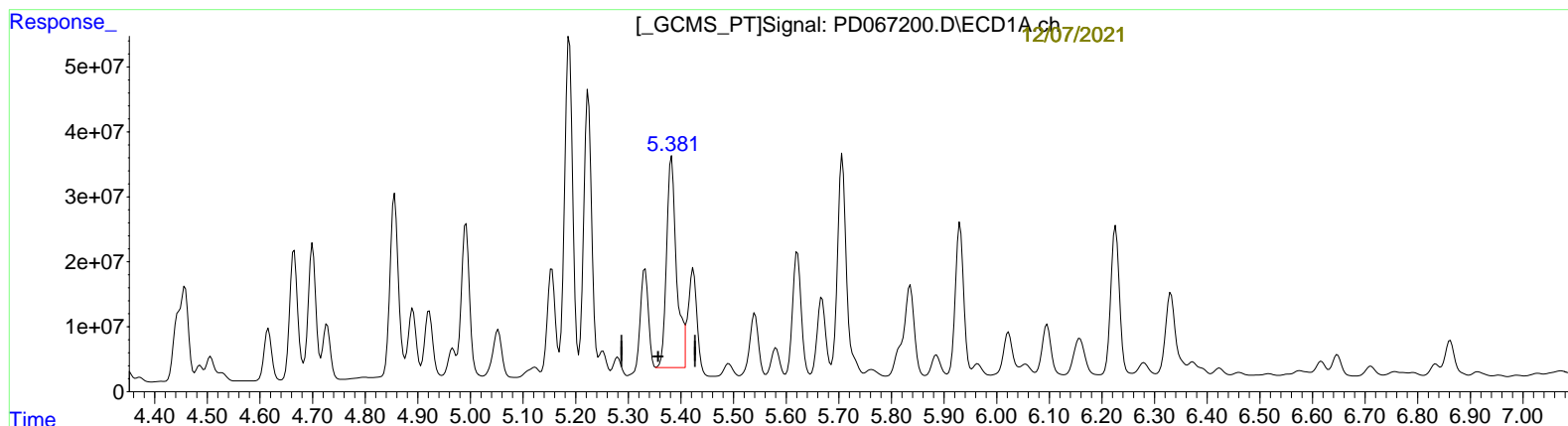
Manual Integrations APPROVED

Reviewed By : Abdul
 Mirza

Integration File signal 1: autoint1.e
 Integration File signal 2: autoint2.e
 Quant Time: Dec 07 01:14:51 2021
 Quant Method : Z:\pestpcbsrv\HPCHEM1\ECD_D\Method\PD112921CLP.M
 Quant Title : GC Extractables
 QLast Update : Tue Nov 30 05:28:01 2021
 Response via : Initial Calibration
 Integrator: ChemStation

12/03/2021
 Supervised By : mohammad
 ahmed

Volume Inj. : 1 µl
 Signal #1 Phase : ZB-MR2 Signal #2 Phase: ZB-MR1
 Signal #1 Info : 30M x 0.32mm x 0.2 Signal #2 Info : 30M x 0.32mm x 0.50µm



(10) trans-Chlordane (B)
 5.381min 149.630 ng/ml m
 response 421592832

(10) trans-Chlordane #2 (B)
 6.071min 79.850 ng/ml m
 response 606050366

Data Path : Z:\pestpcbsrv\HPCHEM1\ECD_D\Data\PD120321\
 Data File : PD067200.D
 Signal(s) : Signal #1: ECD1A.ch Signal #2: ECD2B.ch
 Acq On : 02 Dec 2021 12:12
 Operator : AR\AJ
 Sample : M4833-11
 Misc :
 ALS Vial : 16 Sample Multiplier: 1

Instrument :
 ECD_D
 ClientSampleId :
 ESQM9

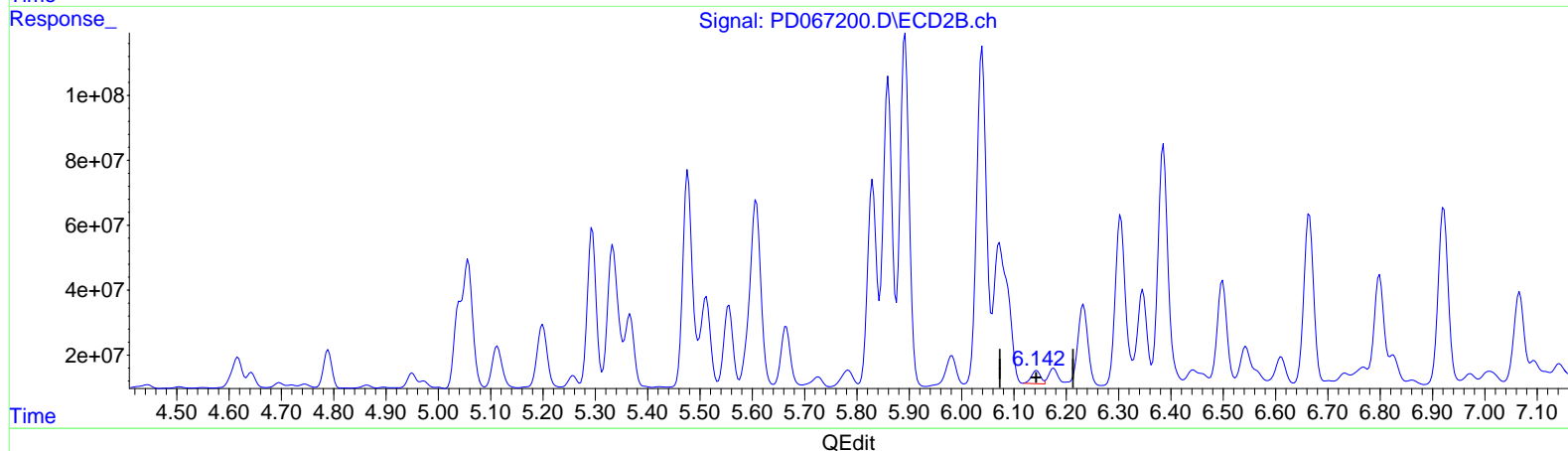
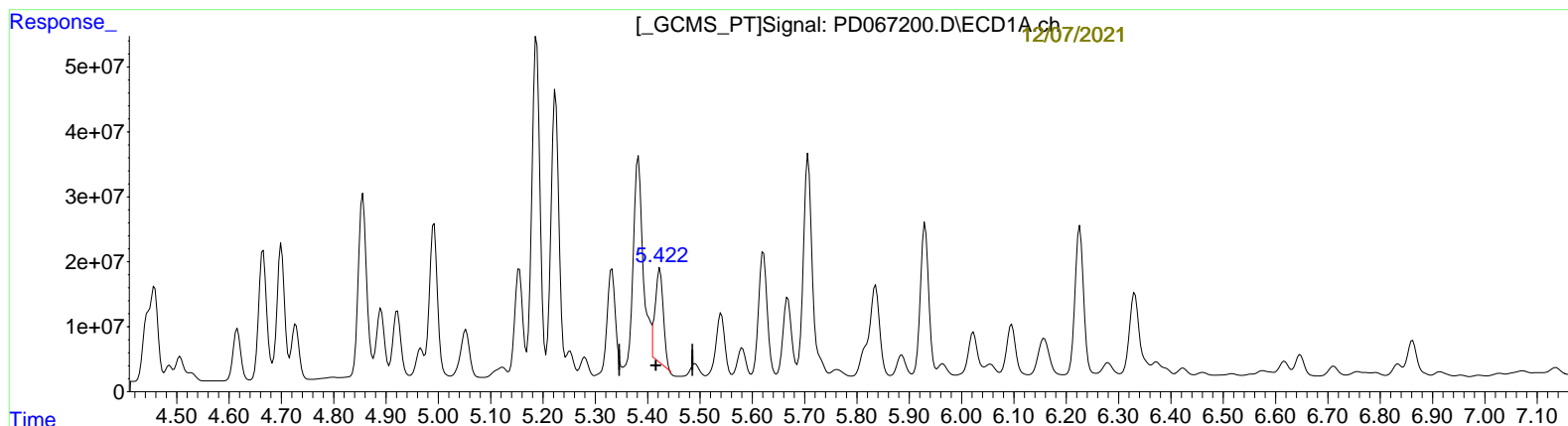
Manual Integrations APPROVED

Reviewed By : Abdul
 Mirza

Integration File signal 1: autoint1.e
 Integration File signal 2: autoint2.e
 Quant Time: Dec 07 01:14:51 2021
 Quant Method : Z:\pestpcbsrv\HPCHEM1\ECD_D\Method\PD112921CLP.M
 Quant Title : GC Extractables
 QLast Update : Tue Nov 30 05:28:01 2021
 Response via : Initial Calibration
 Integrator: ChemStation

12/03/2021
 Supervised By : mohammad
 ahmed

Volume Inj. : 1 µl
 Signal #1 Phase : ZB-MR2 Signal #2 Phase: ZB-MR1
 Signal #1 Info : 30M x 0.32mm x 0.2 Signal #2 Info : 30M x 0.32mm x 0.50µm



(11) cis-Chlordane (B)
 5.423min 54.496 ng/ml
 response 151220624

(11) cis-Chlordane #2 (B)
 6.144min 6.571 ng/ml
 response 48608344

Data Path : Z:\pestpcbsrv\HPCHEM1\ECD_D\Data\PD120321\
 Data File : PD067200.D
 Signal(s) : Signal #1: ECD1A.ch Signal #2: ECD2B.ch
 Acq On : 02 Dec 2021 12:12
 Operator : AR\AJ
 Sample : M4833-11
 Misc :
 ALS Vial : 16 Sample Multiplier: 1

Instrument :
 ECD_D
 ClientSampleId :
 ESQM9

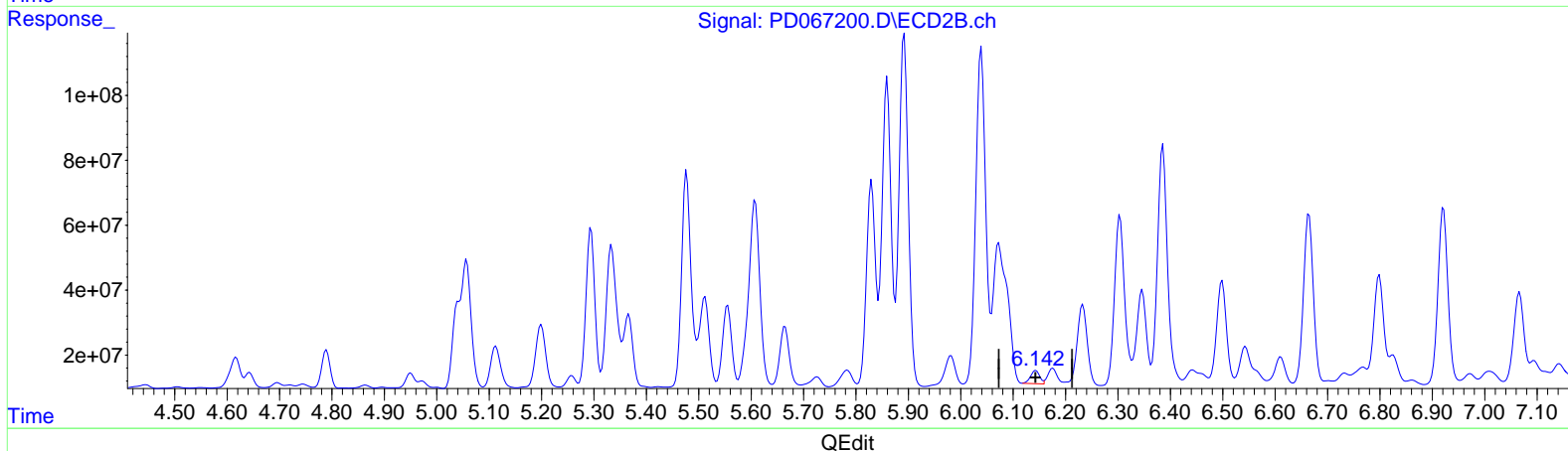
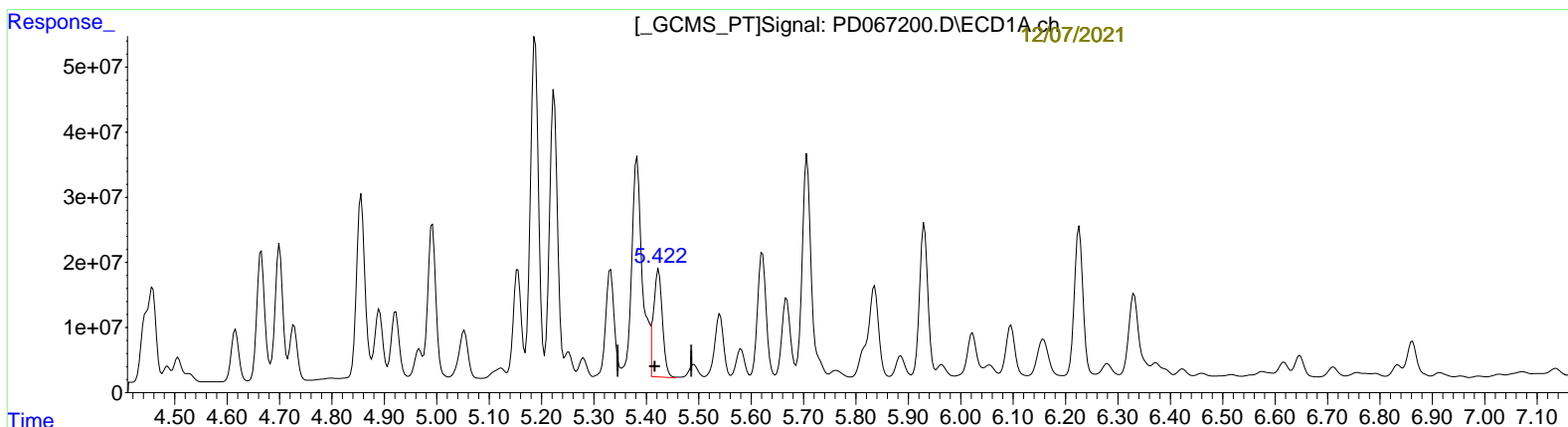
Manual Integrations APPROVED

Reviewed By : Abdul
 Mirza

Integration File signal 1: autoint1.e
 Integration File signal 2: autoint2.e
 Quant Time: Dec 07 01:14:51 2021
 Quant Method : Z:\pestpcbsrv\HPCHEM1\ECD_D\Method\PD112921CLP.M
 Quant Title : GC Extractables
 QLast Update : Tue Nov 30 05:28:01 2021
 Response via : Initial Calibration
 Integrator: ChemStation

12/03/2021
 Supervised By : mohammad
 ahmed

Volume Inj. : 1 µl
 Signal #1 Phase : ZB-MR2 Signal #2 Phase: ZB-MR1
 Signal #1 Info : 30M x 0.32mm x 0.2 Signal #2 Info : 30M x 0.32mm x 0.50µm



(11) cis-Chlordane (B)
 5.422min 68.030 ng/ml m
 response 188775274

(11) cis-Chlordane #2 (B)
 6.144min 6.571 ng/ml
 response 48608344

Data Path : Z:\pestpcbsrv\HPCHEM1\ECD_D\Data\PD120321\
Data File : PD067200.D
Signal(s) : Signal #1: ECD1A.ch Signal #2: ECD2B.ch
Acq On : 02 Dec 2021 12:12
Operator : AR\AJ
Sample : M4833-11
Misc :
ALS Vial : 16 Sample Multiplier: 1

Instrument :
ECD_D
ClientSampleId :
ESQM9

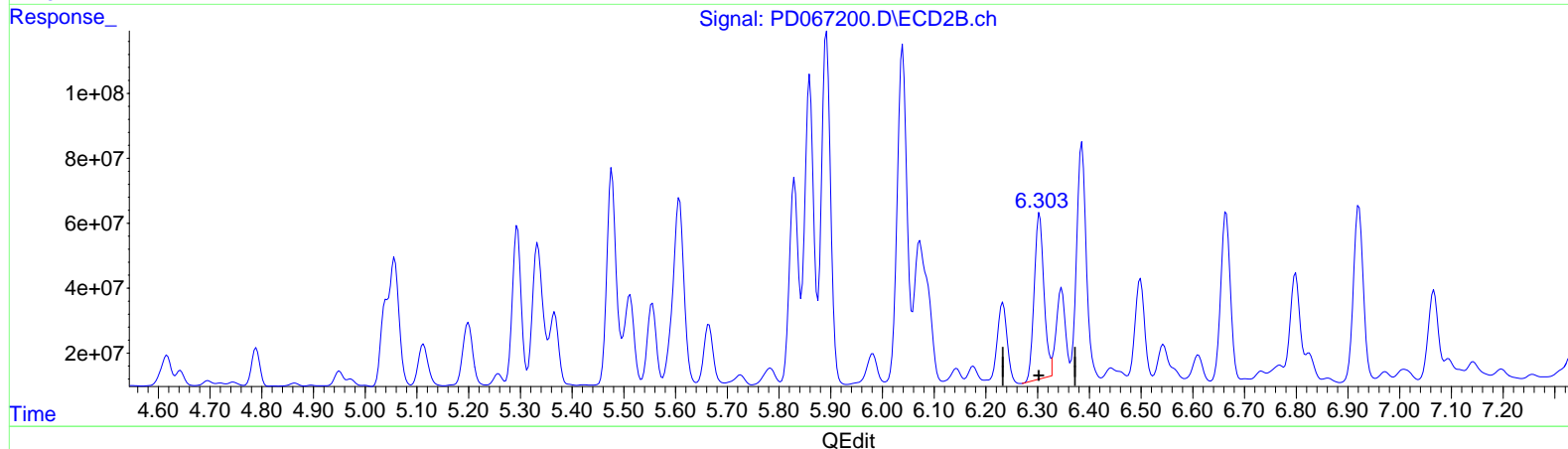
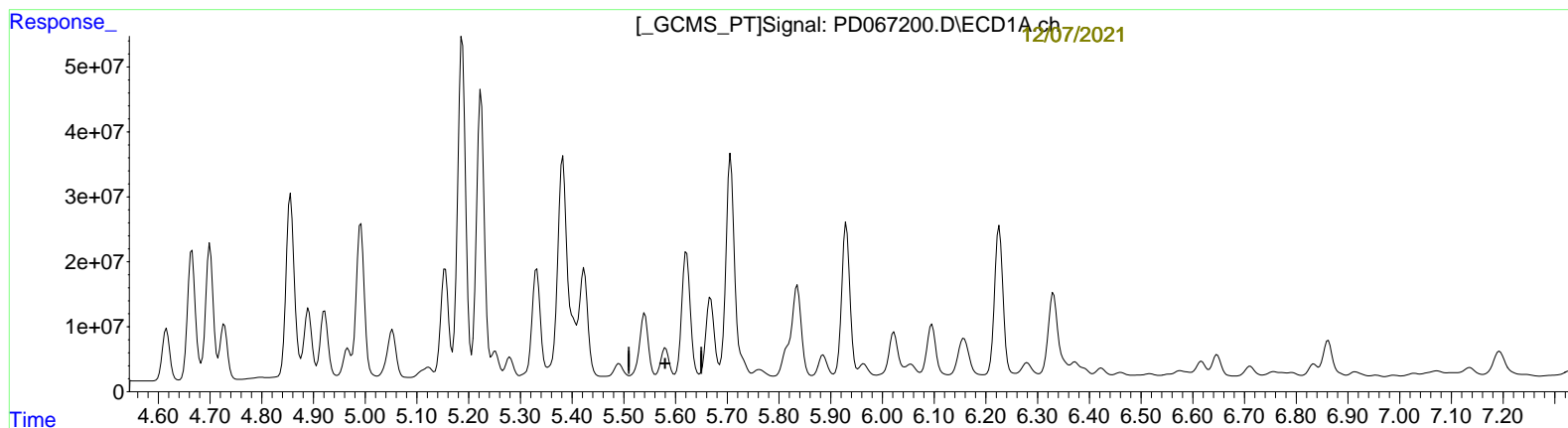
Manual Integrations APPROVED

Reviewed By : Abdul
Mirza

Integration File signal 1: autoint1.e
Integration File signal 2: autoint2.e
Quant Time: Dec 07 01:14:51 2021
Quant Method : Z:\pestpcbsrv\HPCHEM1\ECD_D\Method\PD112921CLP.M
Quant Title : GC Extractables
QLast Update : Tue Nov 30 05:28:01 2021
Response via : Initial Calibration
Integrator: ChemStation

12/03/2021
Supervised By : mohammad
ahmed

Volume Inj. : 1 µl
Signal #1 Phase : ZB-MR2 Signal #2 Phase: ZB-MR1
Signal #1 Info : 30M x 0.32mm x 0.2 Signal #2 Info : 30M x 0.32mm x 0.50µm



(12) 4,4'-DDE (B)
5.581min -17.690 ng/ml
response -44272885

(12) 4,4'-DDE #2 (B)
6.304min 99.288 ng/ml
response 665316046

Data Path : Z:\pestpcbsrv\HPCHEM1\ECD_D\Data\PD120321\
 Data File : PD067200.D
 Signal(s) : Signal #1: ECD1A.ch Signal #2: ECD2B.ch
 Acq On : 02 Dec 2021 12:12
 Operator : AR\AJ
 Sample : M4833-11
 Misc :
 ALS Vial : 16 Sample Multiplier: 1

Instrument :
 ECD_D
 ClientSampleId :
 ESQM9

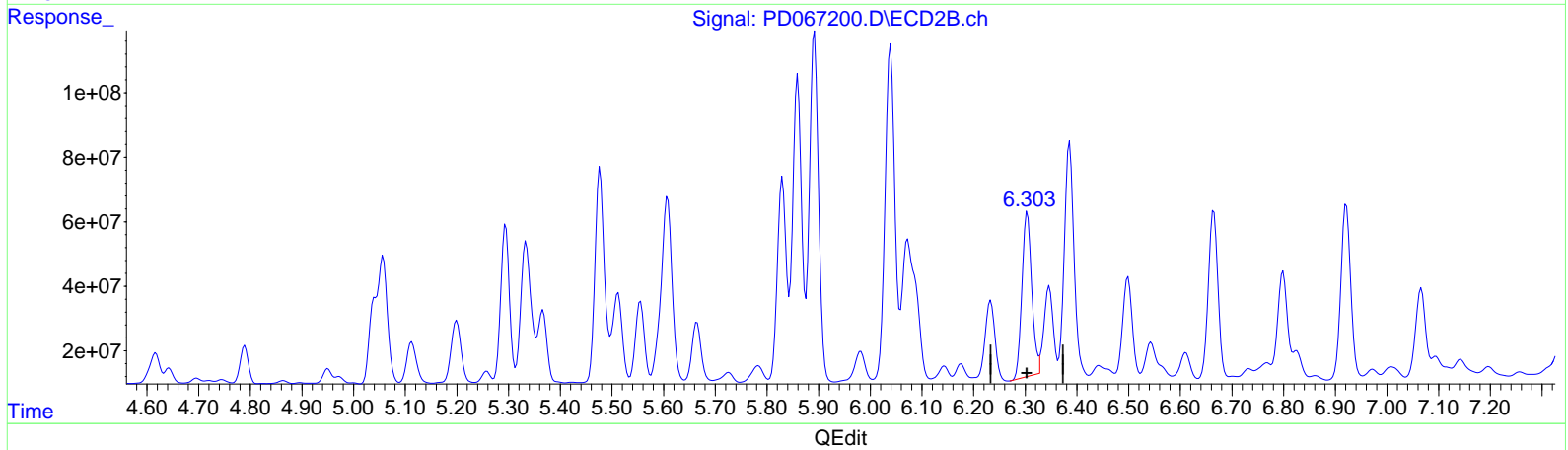
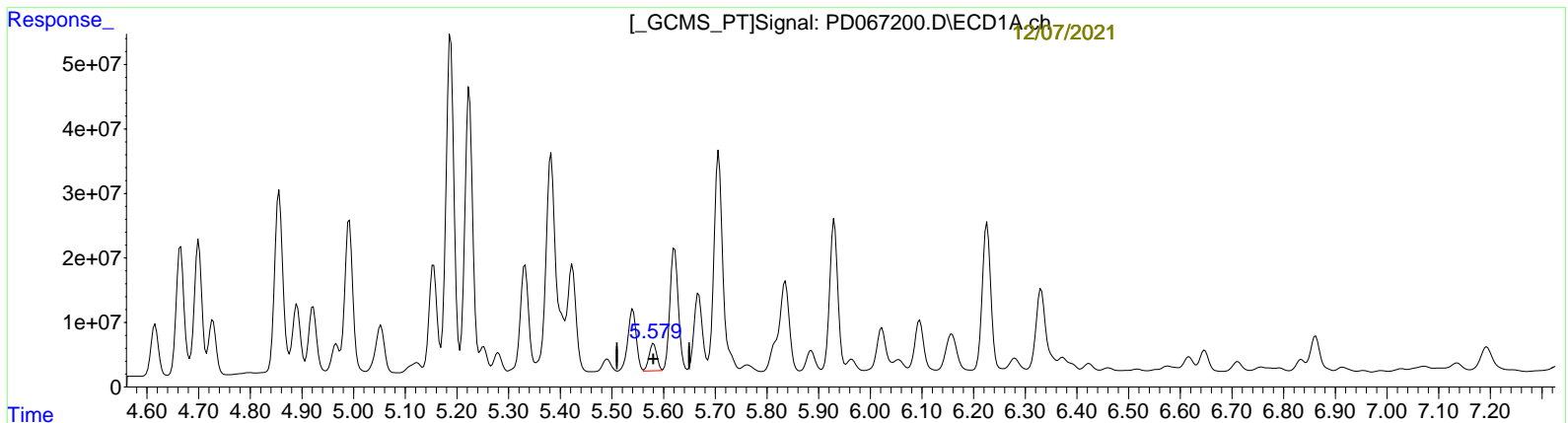
Manual Integrations APPROVED

Reviewed By : Abdul
 Mirza

Integration File signal 1: autoint1.e
 Integration File signal 2: autoint2.e
 Quant Time: Dec 07 01:14:51 2021
 Quant Method : Z:\pestpcbsrv\HPCHEM1\ECD_D\Method\PD112921CLP.M
 Quant Title : GC Extractables
 QLast Update : Tue Nov 30 05:28:01 2021
 Response via : Initial Calibration
 Integrator: ChemStation

12/03/2021
 Supervised By : mohammad
 ahmed

Volume Inj. : 1 µl
 Signal #1 Phase : ZB-MR2 Signal #2 Phase: ZB-MR1
 Signal #1 Info : 30M x 0.32mm x 0.2 Signal #2 Info : 30M x 0.32mm x 0.50µm



(12) 4,4'-DDE (B)
 5.579min 17.826 ng/ml m
 response 44613287

(12) 4,4'-DDE #2 (B)
 6.304min 99.288 ng/ml
 response 665316046

Data Path : Z:\pestpcbsrv\HPCHEM1\ECD_D\Data\PD120321\
 Data File : PD067200.D
 Signal(s) : Signal #1: ECD1A.ch Signal #2: ECD2B.ch
 Acq On : 02 Dec 2021 12:12
 Operator : AR\AJ
 Sample : M4833-11
 Misc :
 ALS Vial : 16 Sample Multiplier: 1

Instrument :

ECD_D

ClientSampleId :

ESQM9

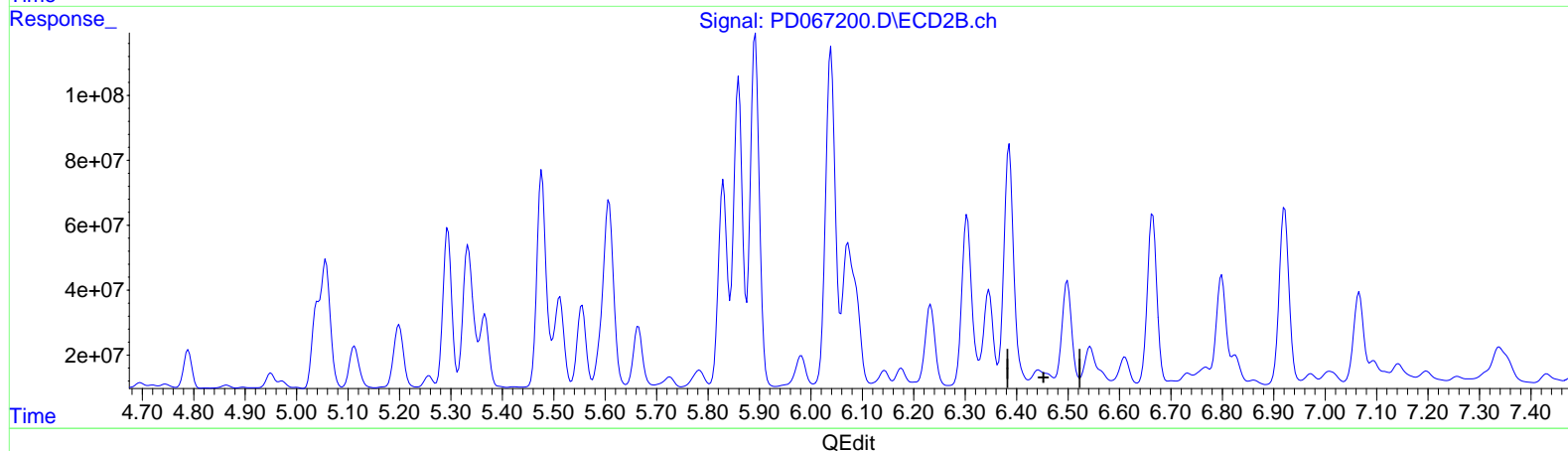
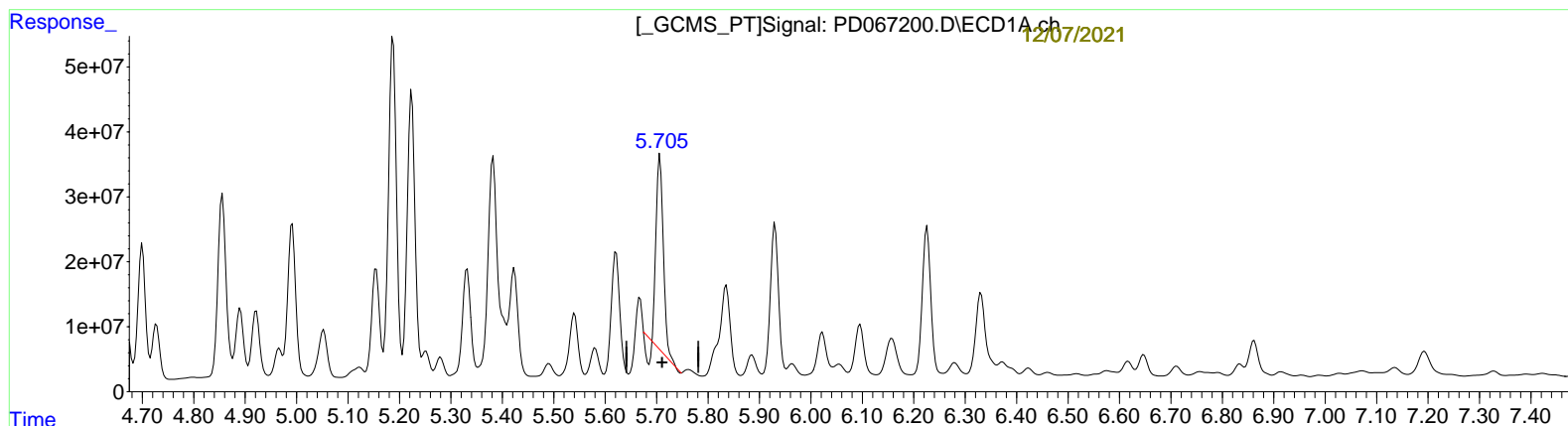
Manual IntegrationsAPPROVED

Reviewed By :Abdul
 Mirza

Integration File signal 1: autoint1.e
 Integration File signal 2: autoint2.e
 Quant Time: Dec 07 01:14:51 2021
 Quant Method : Z:\pestpcbsrv\HPCHEM1\ECD_D\Method\PD112921CLP.M
 Quant Title : GC Extractables
 QLast Update : Tue Nov 30 05:28:01 2021
 Response via : Initial Calibration
 Integrator: ChemStation

12/03/2021
 Supervised By :mohammad
 ahmed

Volume Inj. : 1 µl
 Signal #1 Phase : ZB-MR2 Signal #2 Phase: ZB-MR1
 Signal #1 Info : 30M x 0.32mm x0.2 Signal #2 Info : 30M x 0.32mm x 0.50µm



(13) Dieldrin (MA)
 5.707min 98.135 ng/ml
 response 282591921

(13) Dieldrin #2 (MA)
 6.443min -3.492 ng/ml
 response -25982080

Data Path : Z:\pestpcbsrv\HPCHEM1\ECD_D\Data\PD120321\
 Data File : PD067200.D
 Signal(s) : Signal #1: ECD1A.ch Signal #2: ECD2B.ch
 Acq On : 02 Dec 2021 12:12
 Operator : AR\AJ
 Sample : M4833-11
 Misc :
 ALS Vial : 16 Sample Multiplier: 1

Instrument :
 ECD_D
 ClientSampleId :
 ESQM9

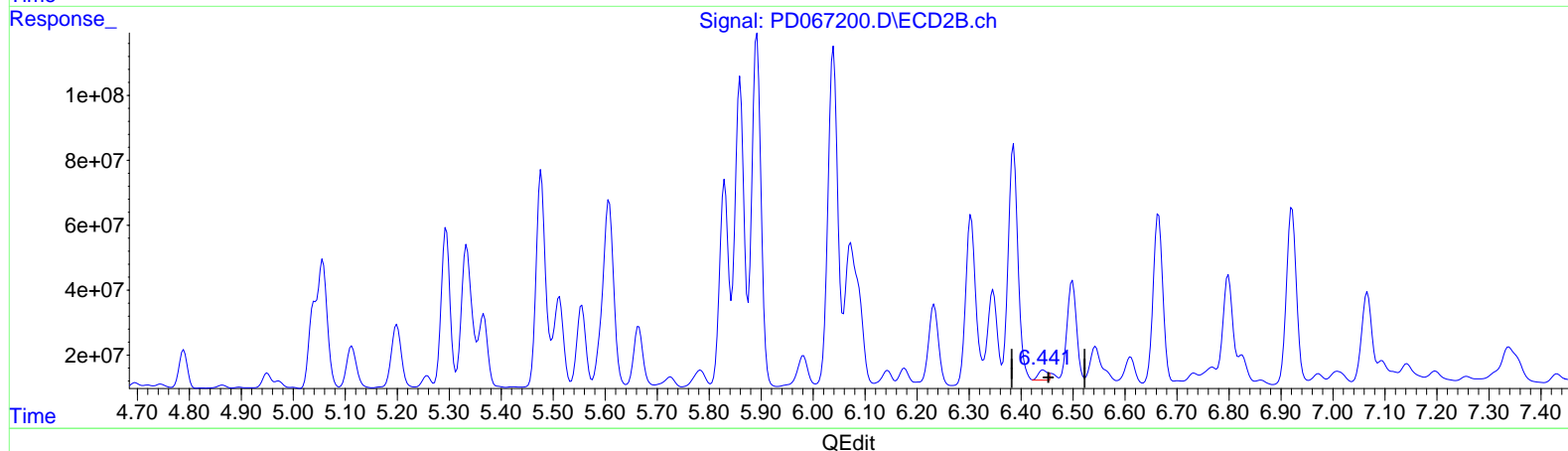
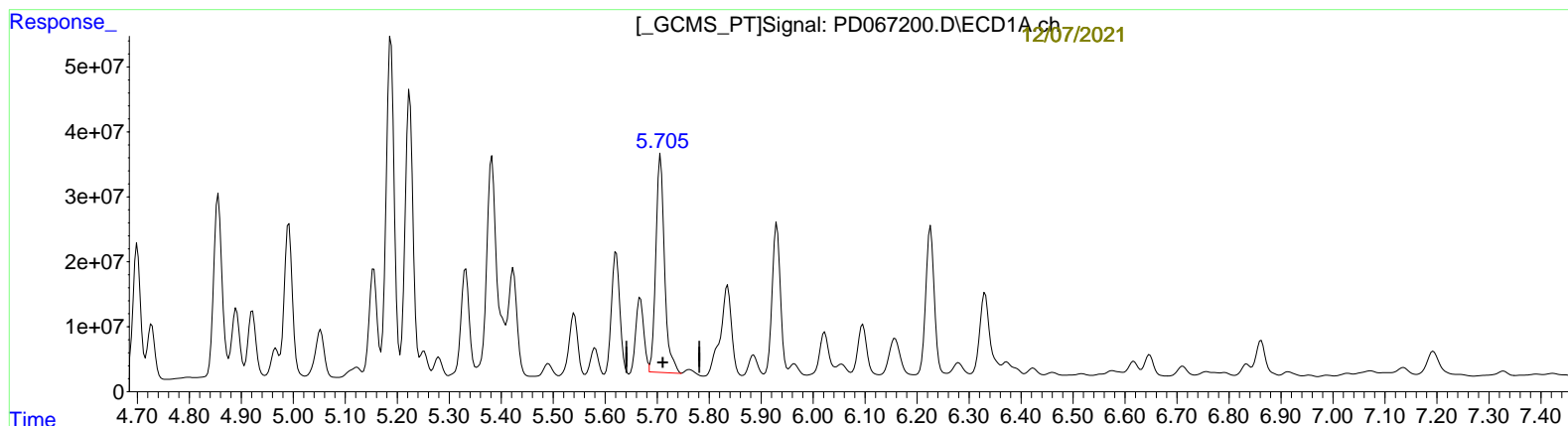
Manual Integrations APPROVED

Reviewed By : Abdul
 Mirza

Integration File signal 1: autoint1.e
 Integration File signal 2: autoint2.e
 Quant Time: Dec 07 01:14:51 2021
 Quant Method : Z:\pestpcbsrv\HPCHEM1\ECD_D\Method\PD112921CLP.M
 Quant Title : GC Extractables
 QLast Update : Tue Nov 30 05:28:01 2021
 Response via : Initial Calibration
 Integrator: ChemStation

12/03/2021
 Supervised By : mohammad
 ahmed

Volume Inj. : 1 µl
 Signal #1 Phase : ZB-MR2 Signal #2 Phase: ZB-MR1
 Signal #1 Info : 30M x 0.32mm x 0.2 Signal #2 Info : 30M x 0.32mm x 0.50µm



(13) Dieldrin (MA)
 5.705min 134.882 ng/ml m
 response 388410317

(13) Dieldrin #2 (MA)
 6.441min 4.738 ng/ml m
 response 35257642

Data Path : Z:\pestpcbsrv\HPCHEM1\ECD_D\Data\PD120321\
 Data File : PD067200.D
 Signal(s) : Signal #1: ECD1A.ch Signal #2: ECD2B.ch
 Acq On : 02 Dec 2021 12:12
 Operator : AR\AJ
 Sample : M4833-11
 Misc :
 ALS Vial : 16 Sample Multiplier: 1

Instrument :
 ECD_D
 ClientSampleId :
 ESQM9

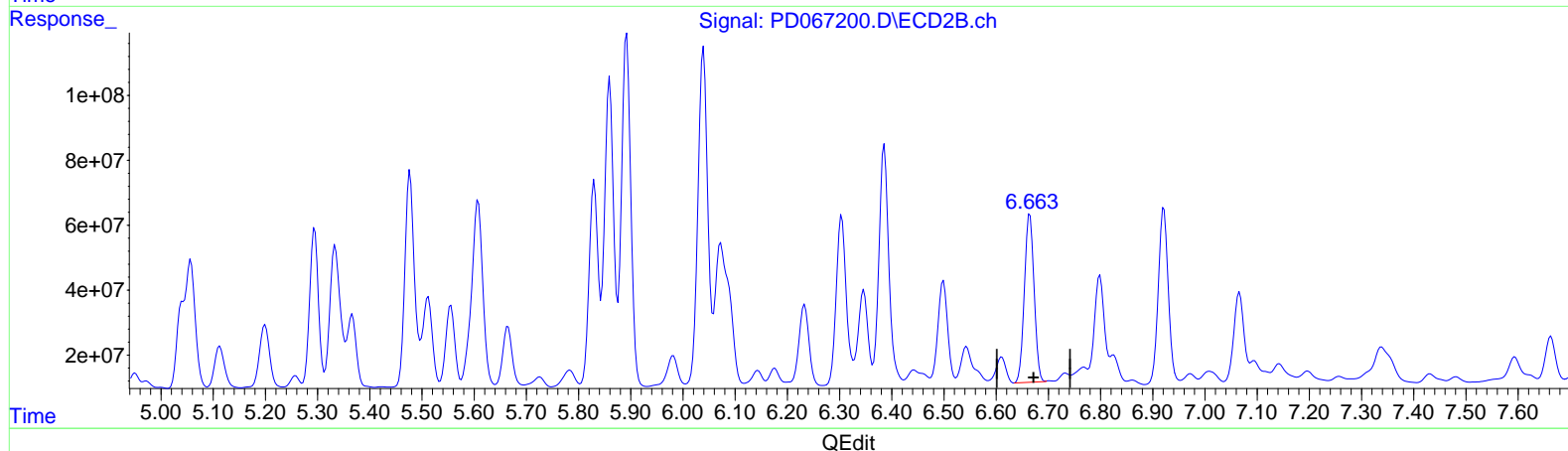
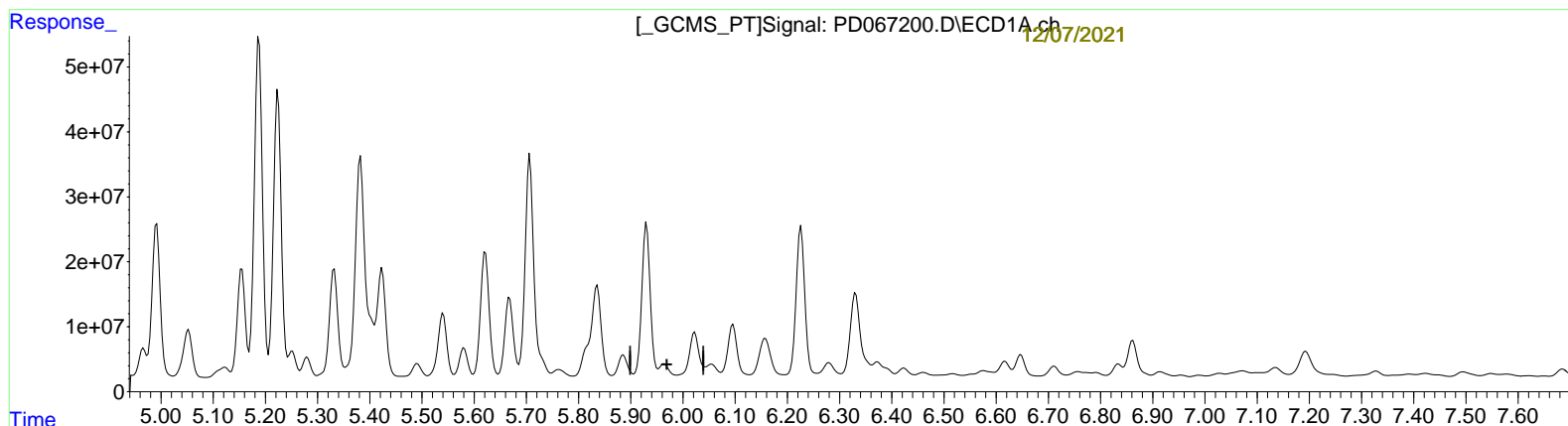
Manual Integrations APPROVED

Reviewed By : Abdul
 Mirza

Integration File signal 1: autoint1.e
 Integration File signal 2: autoint2.e
 Quant Time: Dec 07 01:14:51 2021
 Quant Method : Z:\pestpcbsrv\HPCHEM1\ECD_D\Method\PD112921CLP.M
 Quant Title : GC Extractables
 QLast Update : Tue Nov 30 05:28:01 2021
 Response via : Initial Calibration
 Integrator: ChemStation

12/03/2021
 Supervised By : mohammad
 ahmed

Volume Inj. : 1 µl
 Signal #1 Phase : ZB-MR2 Signal #2 Phase: ZB-MR1
 Signal #1 Info : 30M x 0.32mm x 0.2 Signal #2 Info : 30M x 0.32mm x 0.50µm



(14) Endrin (MA)
 5.964min -31.131 ng/ml
 response -71193826

(14) Endrin #2 (MA)
 6.665min 115.019 ng/ml
 response 667299375

Data Path : Z:\pestpcbsrv\HPCHEM1\ECD_D\Data\PD120321\
 Data File : PD067200.D
 Signal(s) : Signal #1: ECD1A.ch Signal #2: ECD2B.ch
 Acq On : 02 Dec 2021 12:12
 Operator : AR\AJ
 Sample : M4833-11
 Misc :
 ALS Vial : 16 Sample Multiplier: 1

Instrument :
 ECD_D
 ClientSampleId :
 ESQM9

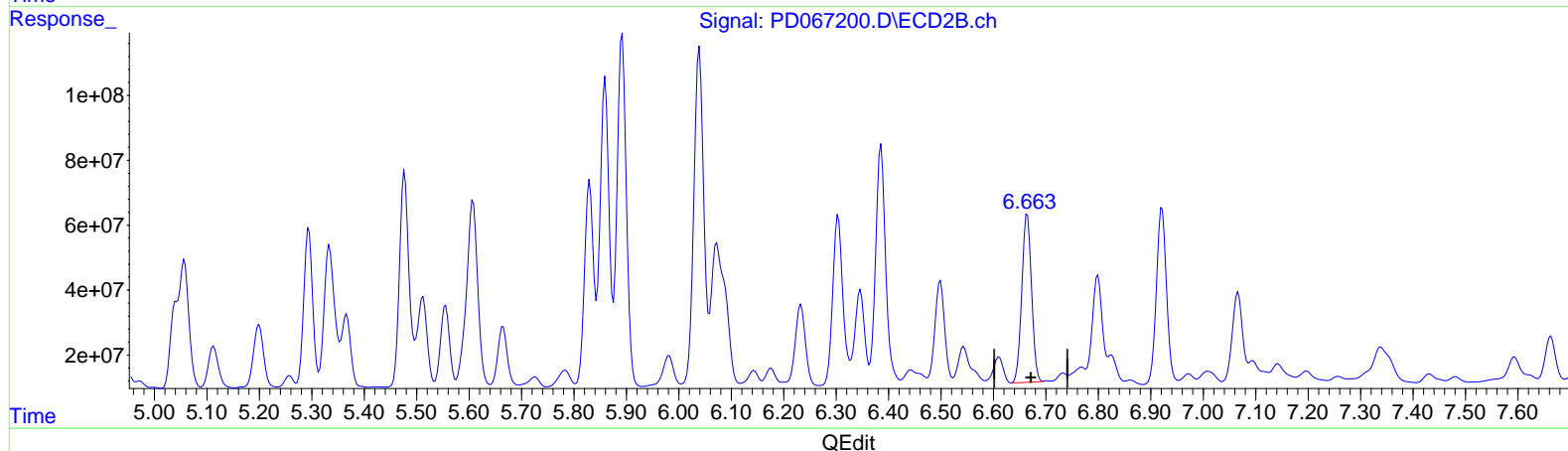
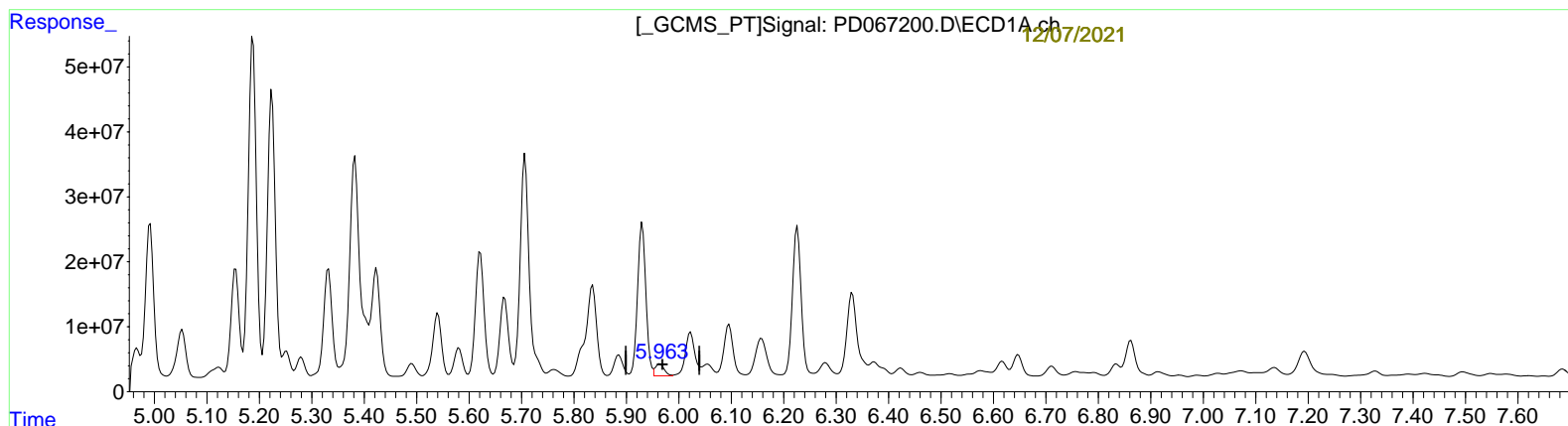
Manual Integrations APPROVED

Reviewed By : Abdul
 Mirza

Integration File signal 1: autoint1.e
 Integration File signal 2: autoint2.e
 Quant Time: Dec 07 01:14:51 2021
 Quant Method : Z:\pestpcbsrv\HPCHEM1\ECD_D\Method\PD112921CLP.M
 Quant Title : GC Extractables
 QLast Update : Tue Nov 30 05:28:01 2021
 Response via : Initial Calibration
 Integrator: ChemStation

12/03/2021
 Supervised By : mohammad
 ahmed

Volume Inj. : 1 µl
 Signal #1 Phase : ZB-MR2 Signal #2 Phase: ZB-MR1
 Signal #1 Info : 30M x 0.32mm x 0.2 Signal #2 Info : 30M x 0.32mm x 0.50µm



(14) Endrin (MA)
 5.963min 9.353 ng/ml m
 response 21388575

(14) Endrin #2 (MA)
 6.665min 115.019 ng/ml
 response 667299375

Data Path : Z:\pestpcbsrv\HPCHEM1\ECD_D\Data\PD120321\
Data File : PD067200.D
Signal(s) : Signal #1: ECD1A.ch Signal #2: ECD2B.ch
Acq On : 02 Dec 2021 12:12
Operator : AR\AJ
Sample : M4833-11
Misc :
ALS Vial : 16 Sample Multiplier: 1

Instrument :
ECD_D
ClientSampleId :
ESQM9

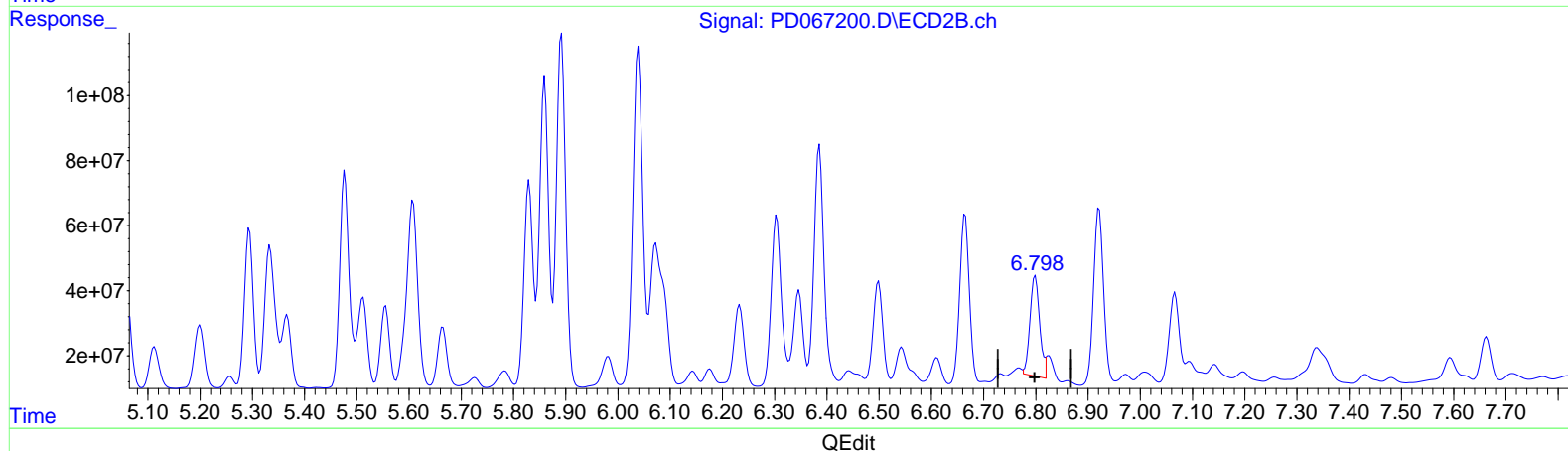
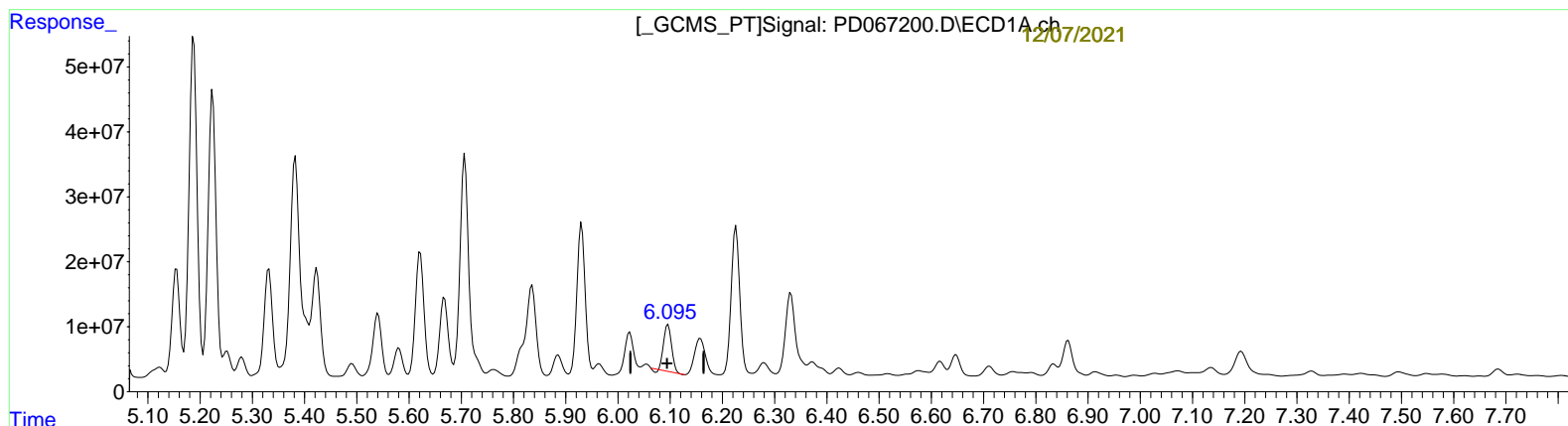
Manual Integrations APPROVED

Reviewed By : Abdul
Mirza

Integration File signal 1: autoint1.e
Integration File signal 2: autoint2.e
Quant Time: Dec 07 01:14:51 2021
Quant Method : Z:\pestpcbsrv\HPCHEM1\ECD_D\Method\PD112921CLP.M
Quant Title : GC Extractables
QLast Update : Tue Nov 30 05:28:01 2021
Response via : Initial Calibration
Integrator: ChemStation

12/03/2021
Supervised By : mohammad
ahmed

Volume Inj. : 1 µl
Signal #1 Phase : ZB-MR2 Signal #2 Phase: ZB-MR1
Signal #1 Info : 30M x 0.32mm x 0.2 Signal #2 Info : 30M x 0.32mm x 0.50µm



(16) 4,4'-DDD (A)
6.096min 35.387 ng/ml
response 74814450

(16) 4,4'-DDD #2 (A)
6.799min 68.037 ng/ml
response 397885457

Data Path : Z:\pestpcbsrv\HPCHEM1\ECD_D\Data\PD120321\
 Data File : PD067200.D
 Signal(s) : Signal #1: ECD1A.ch Signal #2: ECD2B.ch
 Acq On : 02 Dec 2021 12:12
 Operator : AR\AJ
 Sample : M4833-11
 Misc :
 ALS Vial : 16 Sample Multiplier: 1

Instrument :
 ECD_D
 ClientSampleId :
 ESQM9

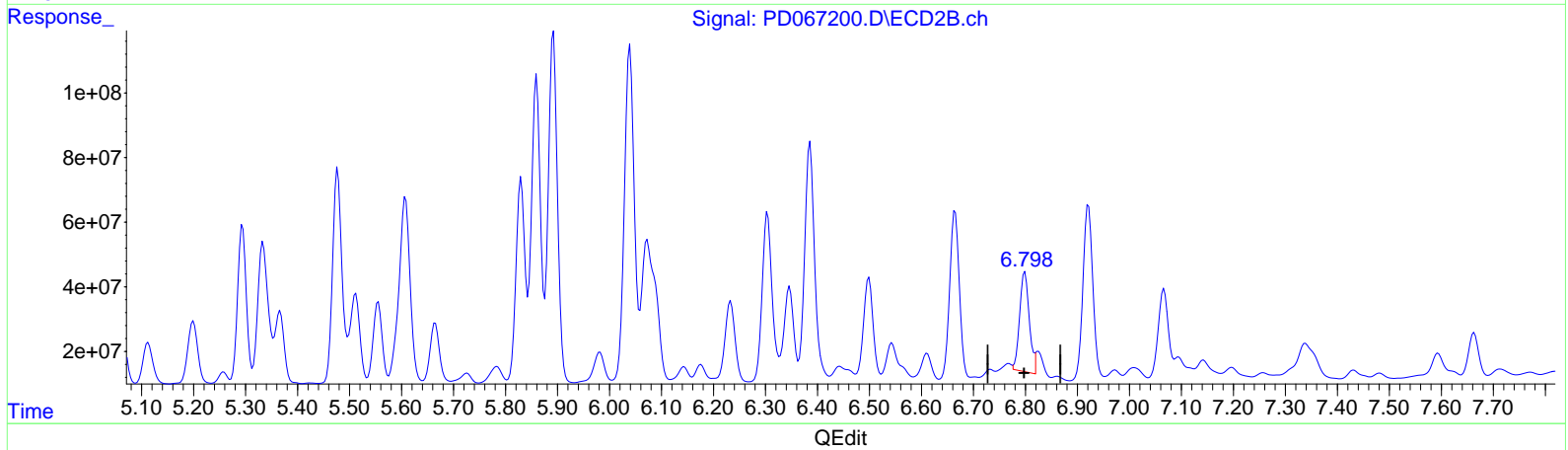
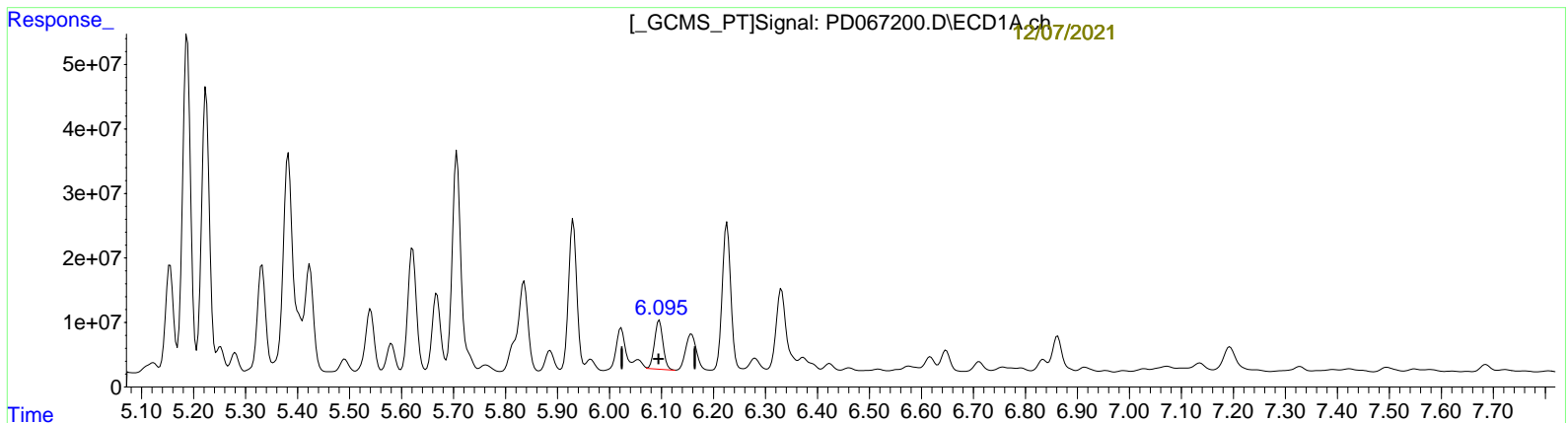
Manual Integrations APPROVED

Reviewed By : Abdul
 Mirza

Integration File signal 1: autoint1.e
 Integration File signal 2: autoint2.e
 Quant Time: Dec 07 01:14:51 2021
 Quant Method : Z:\pestpcbsrv\HPCHEM1\ECD_D\Method\PD112921CLP.M
 Quant Title : GC Extractables
 QLast Update : Tue Nov 30 05:28:01 2021
 Response via : Initial Calibration
 Integrator: ChemStation

12/03/2021
 Supervised By : mohammad
 ahmed

Volume Inj. : 1 µl
 Signal #1 Phase : ZB-MR2 Signal #2 Phase: ZB-MR1
 Signal #1 Info : 30M x 0.32mm x 0.2 Signal #2 Info : 30M x 0.32mm x 0.50µm



(16) 4,4'-DDD (A)
 6.095min 41.274 ng/ml m
 response 87259916

(16) 4,4'-DDD #2 (A)
 6.799min 68.037 ng/ml
 response 397885457

Data Path : Z:\pestpcbsrv\HPCHEM1\ECD_D\Data\PD120321\
 Data File : PD067200.D
 Signal(s) : Signal #1: ECD1A.ch Signal #2: ECD2B.ch
 Acq On : 02 Dec 2021 12:12
 Operator : AR\AJ
 Sample : M4833-11
 Misc :
 ALS Vial : 16 Sample Multiplier: 1

Instrument :
 ECD_D
 ClientSampleId :
 ESQM9

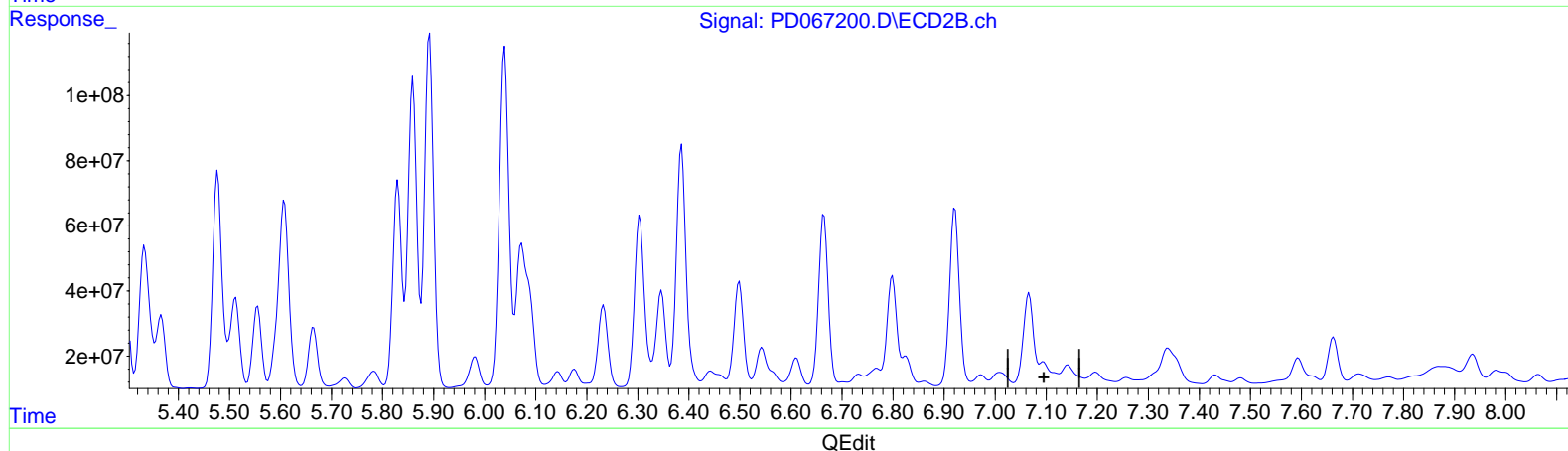
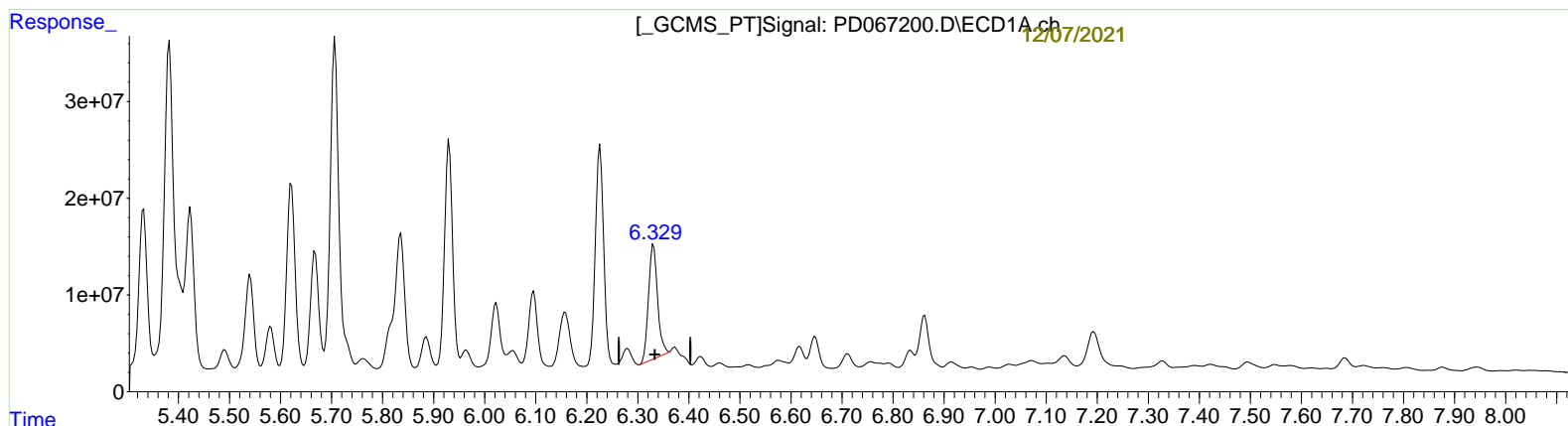
Manual Integrations APPROVED

Reviewed By : Abdul
 Mirza

Integration File signal 1: autoint1.e
 Integration File signal 2: autoint2.e
 Quant Time: Dec 07 01:14:51 2021
 Quant Method : Z:\pestpcbsrv\HPCHEM1\ECD_D\Method\PD112921CLP.M
 Quant Title : GC Extractables
 QLast Update : Tue Nov 30 05:28:01 2021
 Response via : Initial Calibration
 Integrator: ChemStation

12/03/2021
 Supervised By : mohammad
 ahmed

Volume Inj. : 1 µl
 Signal #1 Phase : ZB-MR2 Signal #2 Phase: ZB-MR1
 Signal #1 Info : 30M x 0.32mm x 0.2 Signal #2 Info : 30M x 0.32mm x 0.50µm



(17) 4,4'-DDT (MA)
 6.331min 68.535 ng/ml
 response 145687658

(17) 4,4'-DDT #2 (MA)
 7.094min -26.251 ng/ml
 response -151269483

Data Path : Z:\pestpcbsrv\HPCHEM1\ECD_D\Data\PD120321\
 Data File : PD067200.D
 Signal(s) : Signal #1: ECD1A.ch Signal #2: ECD2B.ch
 Acq On : 02 Dec 2021 12:12
 Operator : AR\AJ
 Sample : M4833-11
 Misc :
 ALS Vial : 16 Sample Multiplier: 1

Instrument :
 ECD_D
 ClientSampleId :
 ESQM9

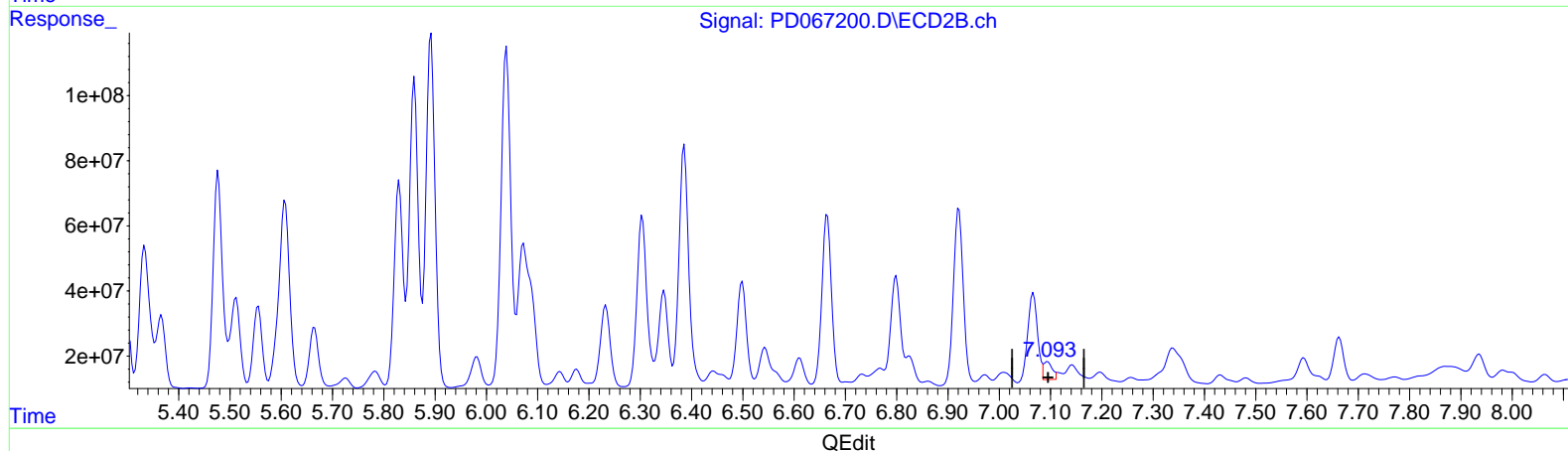
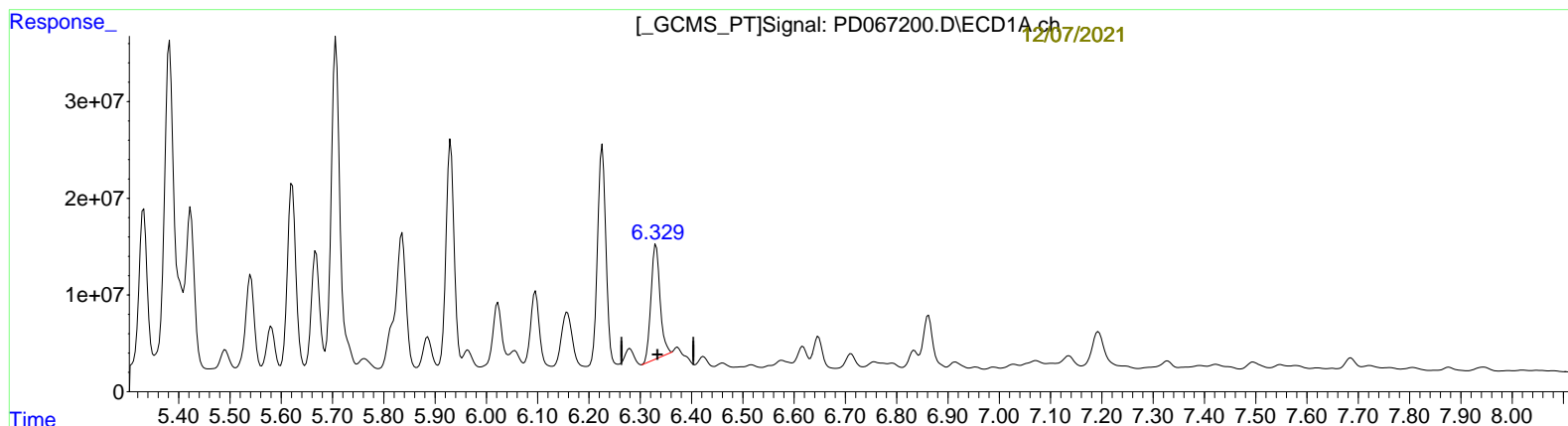
Manual Integrations APPROVED

Reviewed By : Abdul
 Mirza

Integration File signal 1: autoint1.e
 Integration File signal 2: autoint2.e
 Quant Time: Dec 07 01:14:51 2021
 Quant Method : Z:\pestpcbsrv\HPCHEM1\ECD_D\Method\PD112921CLP.M
 Quant Title : GC Extractables
 QLast Update : Tue Nov 30 05:28:01 2021
 Response via : Initial Calibration
 Integrator: ChemStation

12/03/2021
 Supervised By : mohammad
 ahmed

Volume Inj. : 1 µl
 Signal #1 Phase : ZB-MR2 Signal #2 Phase: ZB-MR1
 Signal #1 Info : 30M x 0.32mm x 0.2 Signal #2 Info : 30M x 0.32mm x 0.50µm



(17) 4,4'-DDT (MA)
 6.331min 68.535 ng/ml
 response 145687658

(17) 4,4'-DDT #2 (MA)
 7.093min 10.998 ng/ml m
 response 63375806

Quantitation Report (QT Reviewed)

Data Path : Z:\pestpcbsrv\HPCHEM1\ECD_D\Data\PD120321\
 Data File : PD067200.D
 Signal(s) : Signal #1: ECD1A.ch Signal #2: ECD2B.ch
 Acq On : 02 Dec 2021 12:12
 Operator : AR\AJ
 Sample : M4833-11
 Misc :
 ALS Vial : 16 Sample Multiplier: 1

Instrument :
 ECD_D
 Client Sampled :
 ESQM9

Manual Integrations APPROVED

Reviewed By : Abdul
 Mirza

Integration File signal 1: autoint1.e
 Integration File signal 2: autoint2.e
 Quant Time: Dec 07 01:14:51 2021
 Quant Method : Z:\pestpcbsrv\HPCHEM1\ECD_D\Method\PD112921CLP.M
 Quant Title : GC Extractables
 QLast Update : Tue Nov 30 05:28:01 2021
 Response via : Initial Calibration
 Integrator: ChemStation

12/03/2021
 Supervised By : mohammad
 ahmed

Volume Inj. : 1 µl
 Signal #1 Phase : ZB-MR2 Signal #2 Phase: ZB-MR1
 Signal #1 Info : 30M x 0.32mm x 0.2 Signal #2 Info : 30M x 0.32mm x 0.50µm

12/07/2021

Compound	RT#1	RT#2	Resp#1	Resp#2	ng/ml	ng/ml

System Monitoring Compounds						
1) SA Tetrachlo...	3.437	3.966	23514842	86598923	10.769	10.809
27) SA Decachlor...	8.164	9.024	18066582	95513185	15.913	18.836
Target Compounds						
7) B delta-BHC	4.615	5.040	82785318	246.6E6	28.941m	27.860m
8) B Heptachlo...	5.153	5.829	161.4E6	773.4E6	58.446m	110.341m#
10) B trans-Chl...	5.381	6.071	421.6E6	606.1E6	149.630m	79.850m#
11) B cis-Chlor...	5.422	6.144	188.8E6	48608344	68.030m	6.571 #
12) B 4,4'-DDE	5.579	6.304	44613287	665.3E6	17.826m	99.288 #
13) MA Dieldrin	5.705	6.441	388.4E6	35257642	134.882m	4.738m#
14) MA Endrin	5.963	6.665	21388575	667.3E6	9.353m	115.019 #
16) A 4,4'-DDD	6.095	6.799	87259916	397.9E6	41.274m	68.037 #
17) MA 4,4'-DDT	6.331	7.093	145.7E6	63375806	68.535	10.998m#

Handwritten notes: A bracket groups rows 7-17. Next to it is a handwritten signature 'AJ' and the date '12/07/21'.

(f)=RT Delta > 1/2 Window (#)=Amounts differ by > 25% (m)=manual int.