

Data Path : Z:\pestpcbsrv\HPCHEM1\ECD_D\Data\PD120321\
 Data File : PD067207.D
 Signal(s) : Signal #1: ECD1A.ch Signal #2: ECD2B.ch
 Acq On : 02 Dec 2021 13:49
 Operator : AR\AJ
 Sample : M4833-22
 Misc :
 ALS Vial : 23 Sample Multiplier: 1

Instrument :

ECD_D

ClientSampleId :

ESQN9

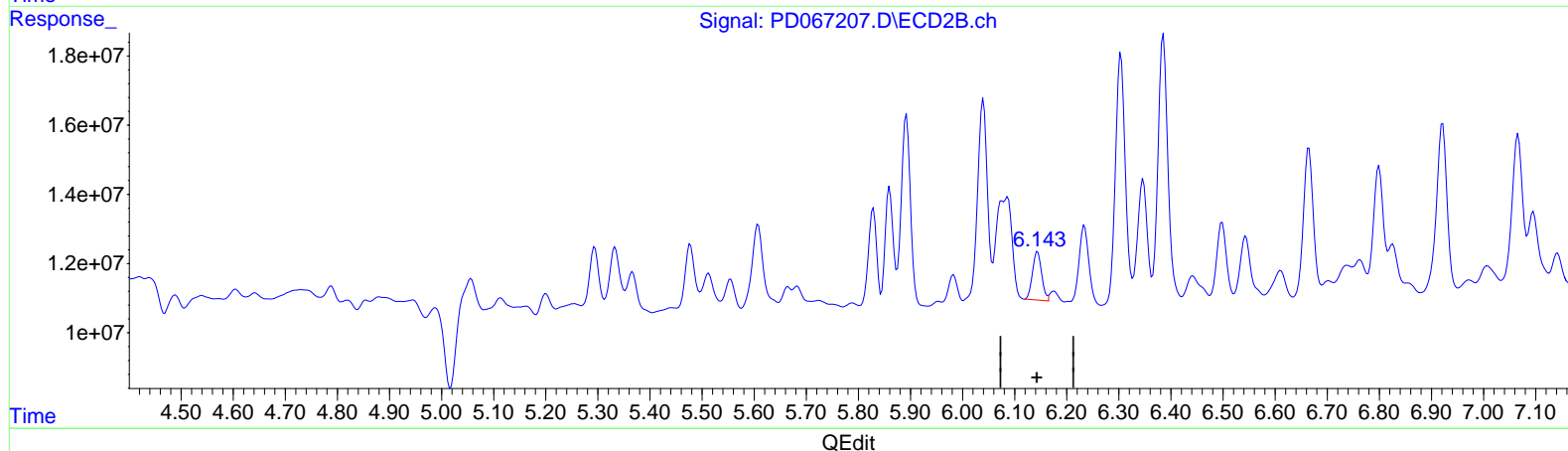
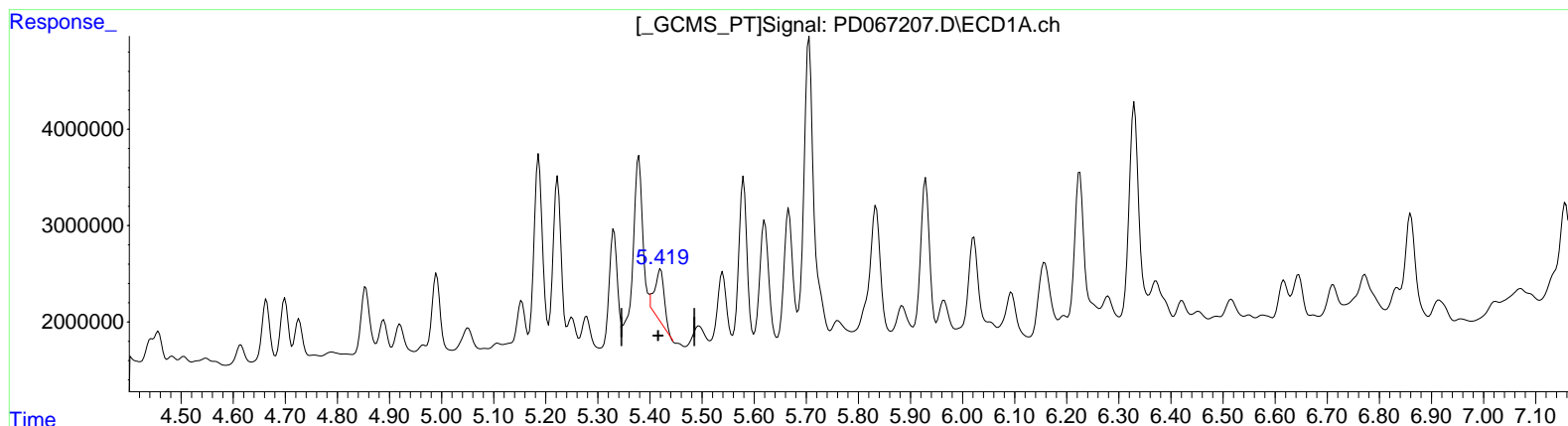
Manual IntegrationsAPPROVED

Reviewed By :Abdul Mirza 12/03/2021

Supervised By :mohammad ahmed 12/07/2021

Integration File signal 1: autoint1.e
 Integration File signal 2: autoint2.e
 Quant Time: Dec 03 04:55:40 2021
 Quant Method : Z:\pestpcbsrv\HPCHEM1\ECD_D\Method\PD112921CLP.M
 Quant Title : GC Extractables
 QLast Update : Tue Nov 30 05:28:01 2021
 Response via : Initial Calibration
 Integrator: ChemStation

Volume Inj. : 1 µl
 Signal #1 Phase : ZB-MR2 Signal #2 Phase: ZB-MR1
 Signal #1 Info : 30M x 0.32mm x0.2 Signal #2 Info : 30M x 0.32mm x 0.50µm



(11) cis-Chlordane (B)

5.420min 2.223 ng/ml

response 6167821

(11) cis-Chlordane #2 (B)

6.144min 2.330 ng/ml

response 17234029

Data Path : Z:\pestpcbsrv\HPCHEM1\ECD_D\Data\PD120321\
 Data File : PD067207.D
 Signal(s) : Signal #1: ECD1A.ch Signal #2: ECD2B.ch
 Acq On : 02 Dec 2021 13:49
 Operator : AR\AJ
 Sample : M4833-22
 Misc :
 ALS Vial : 23 Sample Multiplier: 1

Instrument :

ECD_D

ClientSampleId :

ESQN9

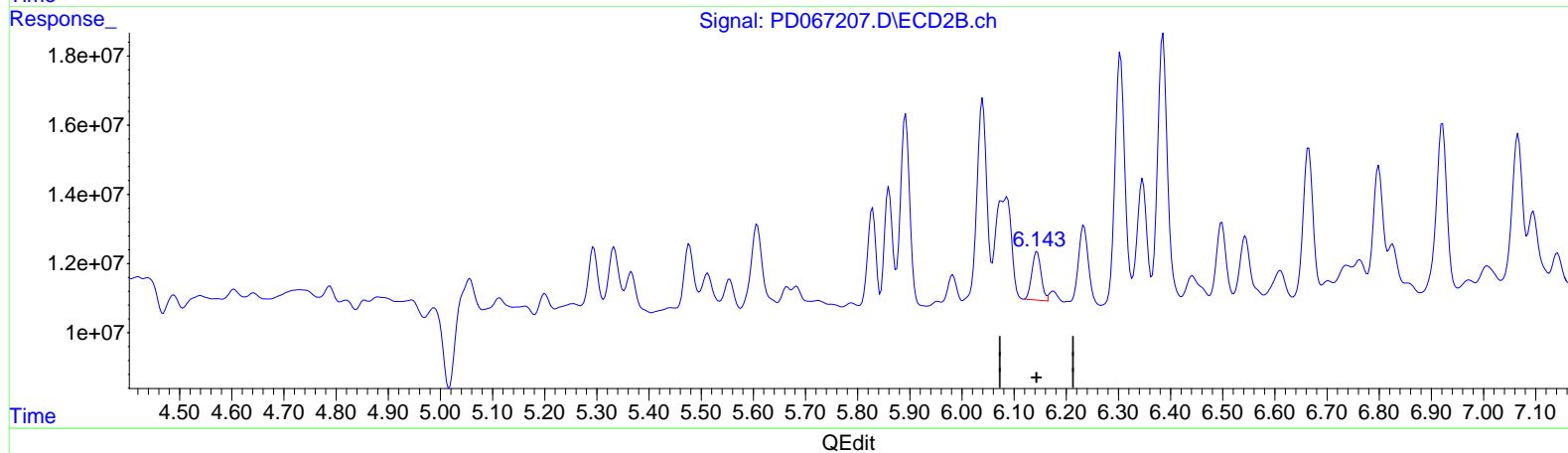
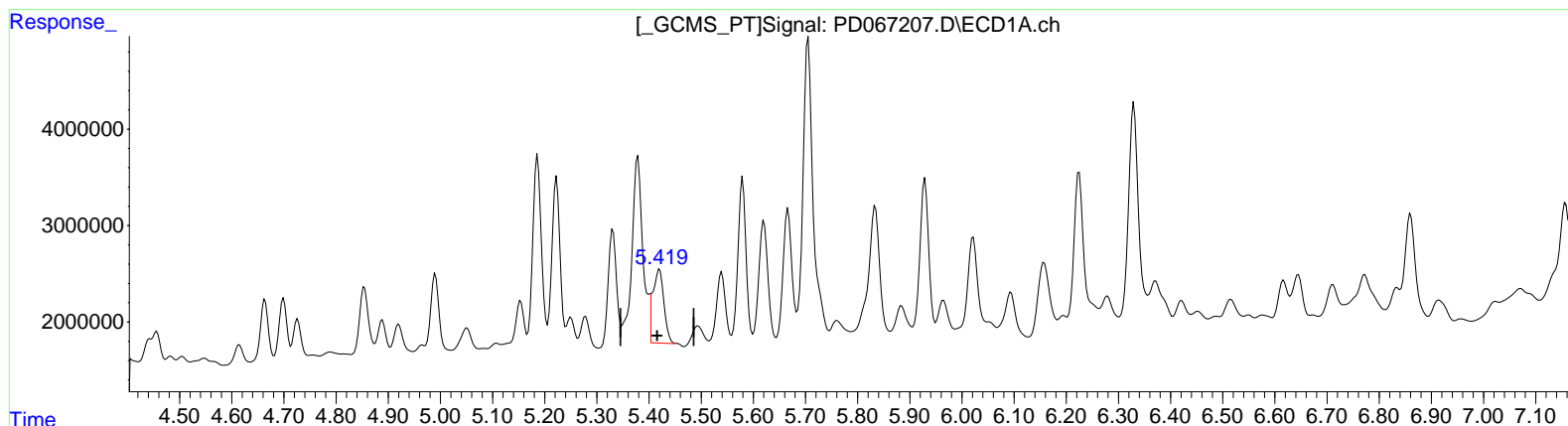
Manual IntegrationsAPPROVED

Reviewed By :Abdul Mirza 12/03/2021

Supervised By :mohammad ahmed 12/07/2021

Integration File signal 1: autoint1.e
 Integration File signal 2: autoint2.e
 Quant Time: Dec 03 04:55:40 2021
 Quant Method : Z:\pestpcbsrv\HPCHEM1\ECD_D\Method\PD112921CLP.M
 Quant Title : GC Extractables
 QLast Update : Tue Nov 30 05:28:01 2021
 Response via : Initial Calibration
 Integrator: ChemStation

Volume Inj. : 1 µl
 Signal #1 Phase : ZB-MR2 Signal #2 Phase: ZB-MR1
 Signal #1 Info : 30M x 0.32mm x0.2 Signal #2 Info : 30M x 0.32mm x 0.50µm



(11) cis-Chlordane (B)
 5.419min 3.939 ng/ml m
 response 10929225

(11) cis-Chlordane #2 (B)
 6.144min 2.330 ng/ml
 response 17234029

Data Path : Z:\pestpcbsrv\HPCHEM1\ECD_D\Data\PD120321\
 Data File : PD067207.D
 Signal(s) : Signal #1: ECD1A.ch Signal #2: ECD2B.ch
 Acq On : 02 Dec 2021 13:49
 Operator : AR\AJ
 Sample : M4833-22
 Misc :
 ALS Vial : 23 Sample Multiplier: 1

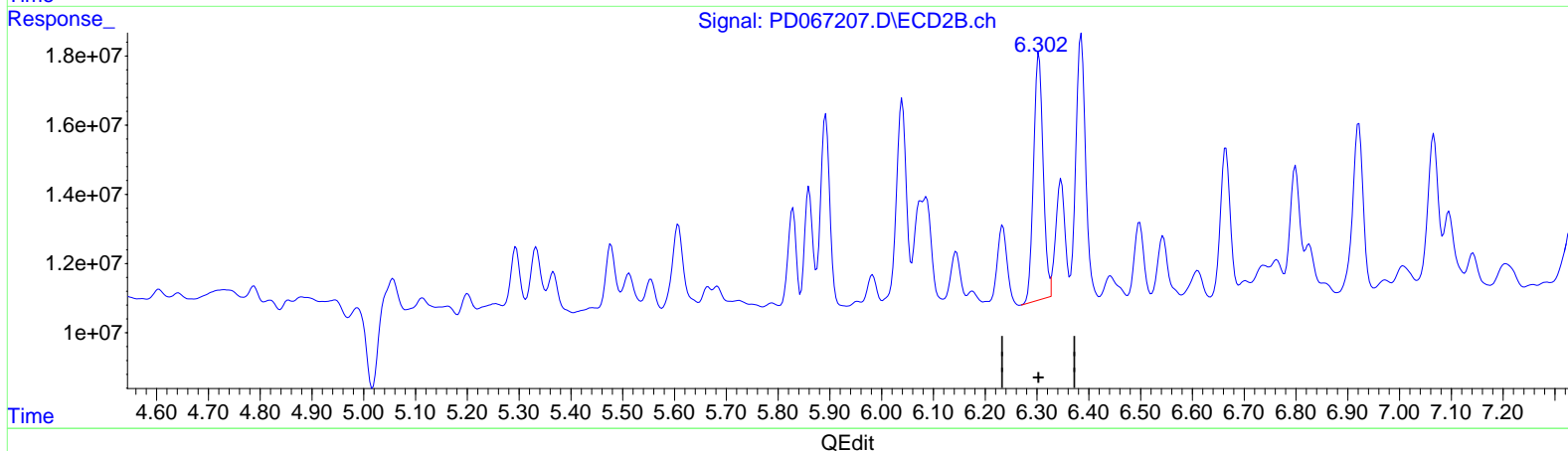
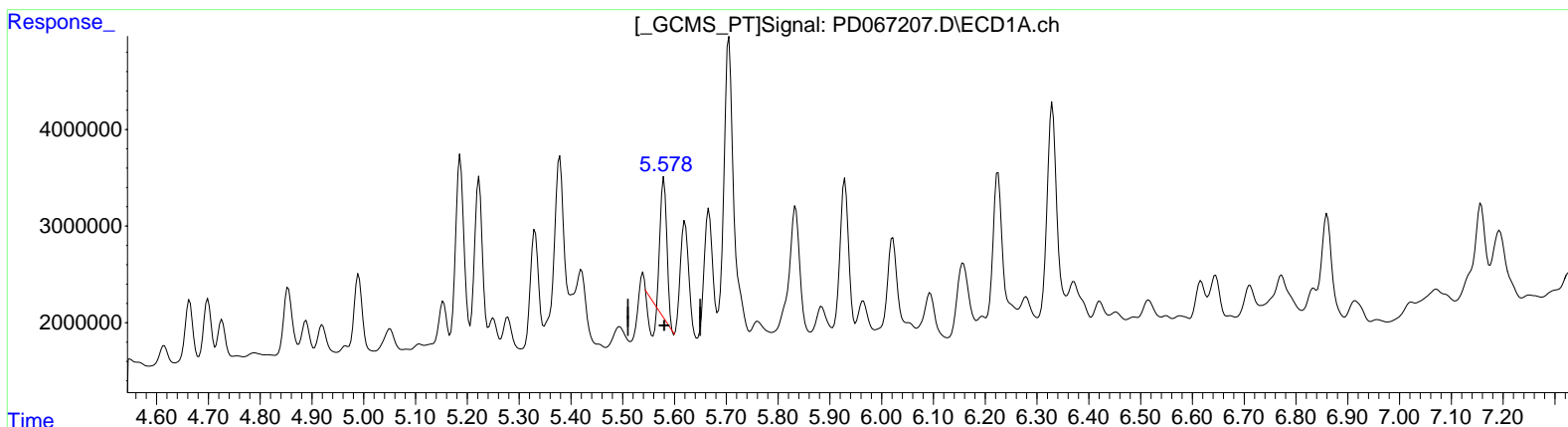
Instrument :
 ECD_D
 ClientSampleId :
 ESQN9

Manual Integrations APPROVED

Reviewed By : Abdul Mirza 12/03/2021
 Supervised By : mohammad ahmed 12/07/2021

Integration File signal 1: autoint1.e
 Integration File signal 2: autoint2.e
 Quant Time: Dec 03 04:55:40 2021
 Quant Method : Z:\pestpcbsrv\HPCHEM1\ECD_D\Method\PD112921CLP.M
 Quant Title : GC Extractables
 QLast Update : Tue Nov 30 05:28:01 2021
 Response via : Initial Calibration
 Integrator: ChemStation

Volume Inj. : 1 µl
 Signal #1 Phase : ZB-MR2 Signal #2 Phase: ZB-MR1
 Signal #1 Info : 30M x 0.32mm x 0.2 Signal #2 Info : 30M x 0.32mm x 0.50µm



(12) 4,4'-DDE (B)
 5.580min 4.269 ng/ml
 response 10684103

(12) 4,4'-DDE #2 (B)
 6.304min 13.664 ng/ml
 response 91557714

Data Path : Z:\pestpcbsrv\HPCHEM1\ECD_D\Data\PD120321\
 Data File : PD067207.D
 Signal(s) : Signal #1: ECD1A.ch Signal #2: ECD2B.ch
 Acq On : 02 Dec 2021 13:49
 Operator : AR\AJ
 Sample : M4833-22
 Misc :
 ALS Vial : 23 Sample Multiplier: 1

Instrument :

ECD_D

ClientSampleId :

ESQN9

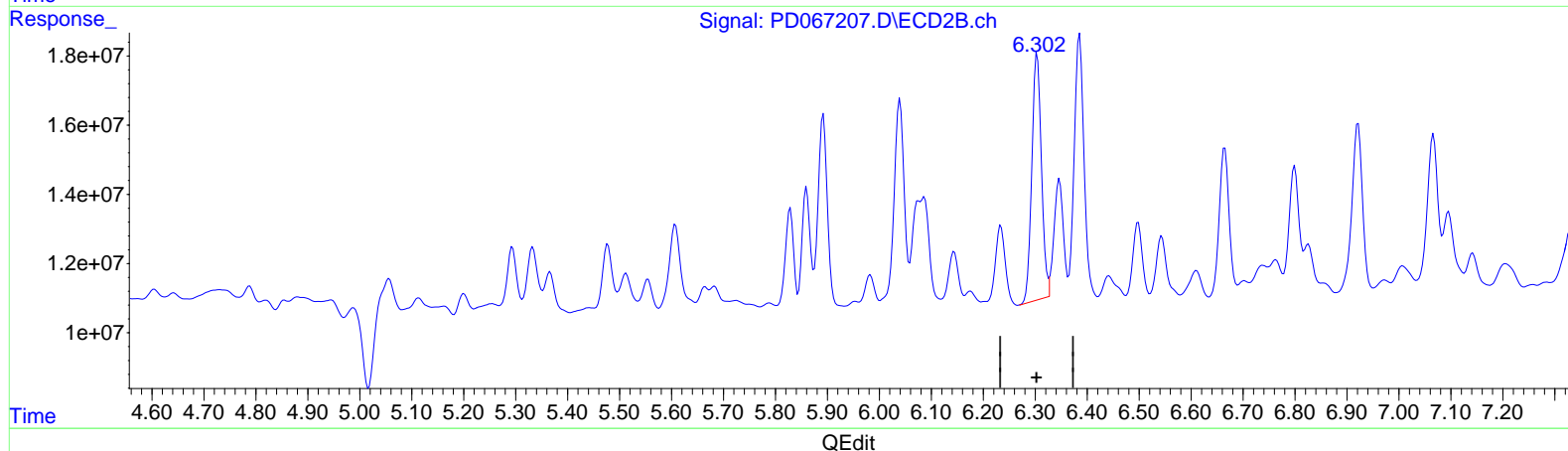
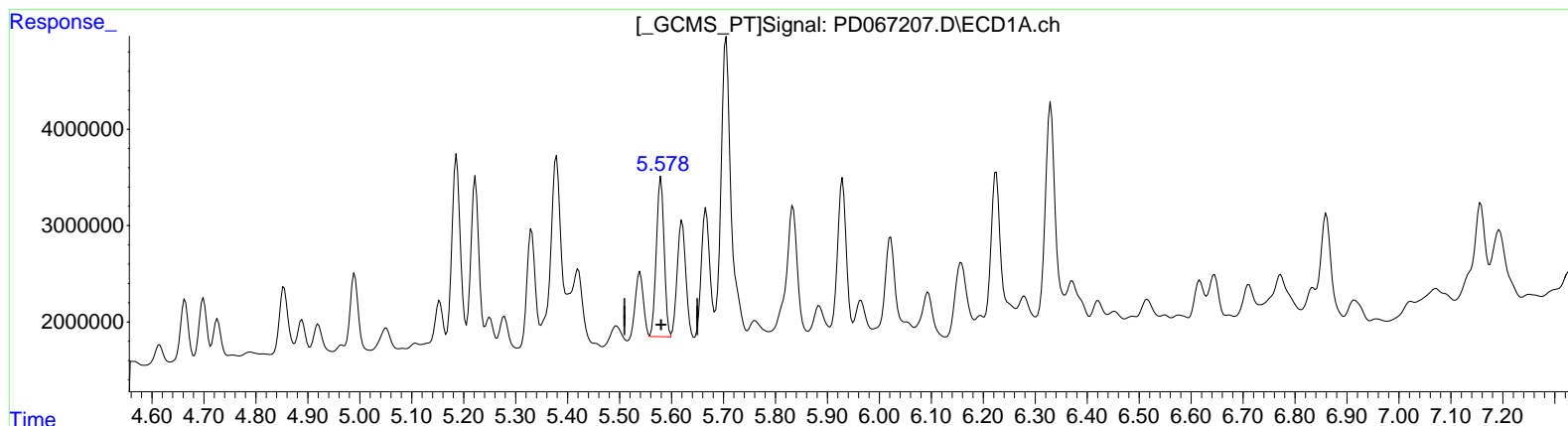
Manual IntegrationsAPPROVED

Reviewed By :Abdul Mirza 12/03/2021

Supervised By :mohammad ahmed 12/07/2021

Integration File signal 1: autoint1.e
 Integration File signal 2: autoint2.e
 Quant Time: Dec 03 04:55:40 2021
 Quant Method : Z:\pestpcbsrv\HPCHEM1\ECD_D\Method\PD112921CLP.M
 Quant Title : GC Extractables
 QLast Update : Tue Nov 30 05:28:01 2021
 Response via : Initial Calibration
 Integrator: ChemStation

Volume Inj. : 1 µl
 Signal #1 Phase : ZB-MR2 Signal #2 Phase: ZB-MR1
 Signal #1 Info : 30M x 0.32mm x0.2 Signal #2 Info : 30M x 0.32mm x 0.50µm



(12) 4,4'-DDE (B)
 5.578min 6.863 ng/ml m
 response 17175704

(12) 4,4'-DDE #2 (B)
 6.304min 13.664 ng/ml
 response 91557714

Data Path : Z:\pestpcbsrv\HPCHEM1\ECD_D\Data\PD120321\
 Data File : PD067207.D
 Signal(s) : Signal #1: ECD1A.ch Signal #2: ECD2B.ch
 Acq On : 02 Dec 2021 13:49
 Operator : AR\AJ
 Sample : M4833-22
 Misc :
 ALS Vial : 23 Sample Multiplier: 1

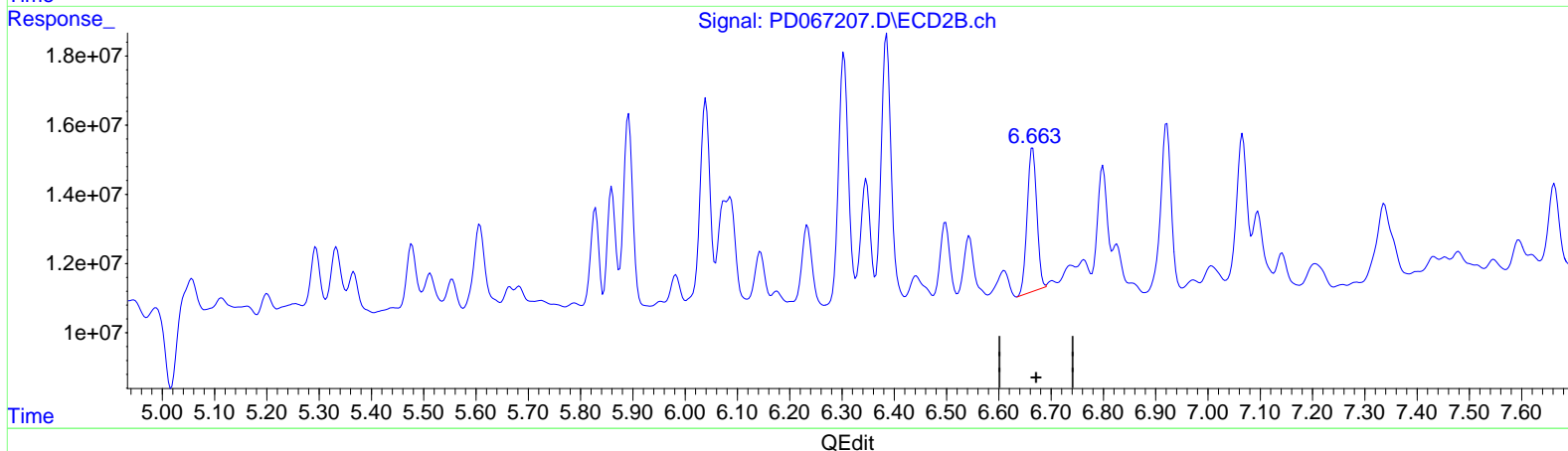
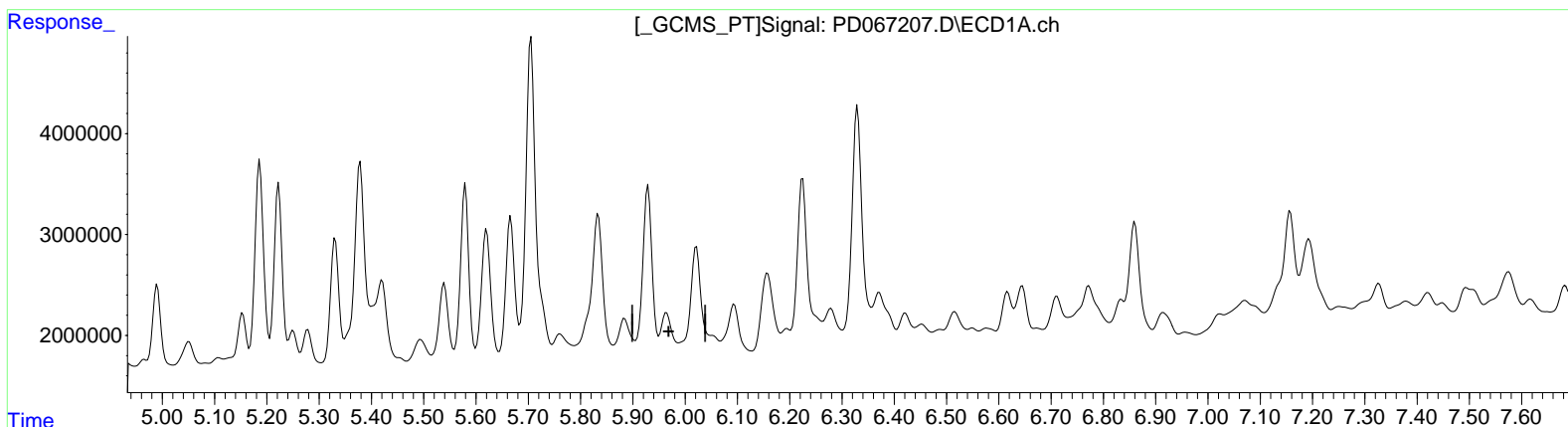
Instrument :
 ECD_D
 ClientSampleId :
 ESQN9

Manual Integrations APPROVED

Reviewed By : Abdul Mirza 12/03/2021
 Supervised By : mohammad ahmed 12/07/2021

Integration File signal 1: autoint1.e
 Integration File signal 2: autoint2.e
 Quant Time: Dec 03 04:55:40 2021
 Quant Method : Z:\pestpcbsrv\HPCHEM1\ECD_D\Method\PD112921CLP.M
 Quant Title : GC Extractables
 QLast Update : Tue Nov 30 05:28:01 2021
 Response via : Initial Calibration
 Integrator: ChemStation

Volume Inj. : 1 µl
 Signal #1 Phase : ZB-MR2 Signal #2 Phase: ZB-MR1
 Signal #1 Info : 30M x 0.32mm x 0.2 Signal #2 Info : 30M x 0.32mm x 0.50µm



(14) Endrin (MA)
 5.965min -4.285 ng/ml
 response -9799176

(14) Endrin #2 (MA)
 6.665min 9.140 ng/ml
 response 53027383

Data Path : Z:\pestpcbsrv\HPCHEM1\ECD_D\Data\PD120321\
 Data File : PD067207.D
 Signal(s) : Signal #1: ECD1A.ch Signal #2: ECD2B.ch
 Acq On : 02 Dec 2021 13:49
 Operator : AR\AJ
 Sample : M4833-22
 Misc :
 ALS Vial : 23 Sample Multiplier: 1

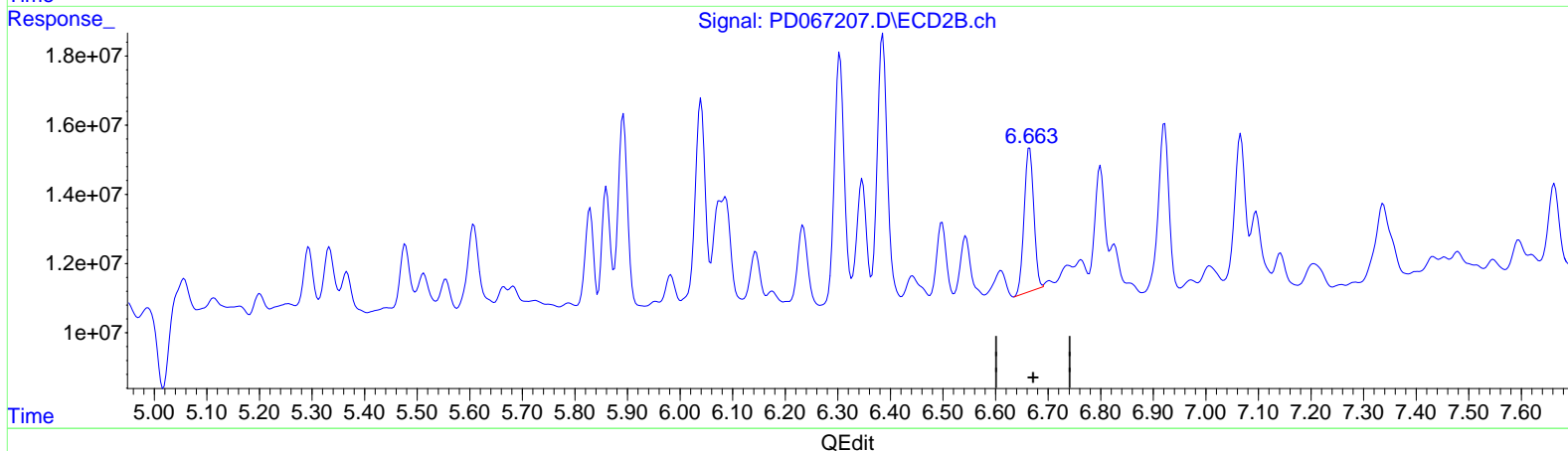
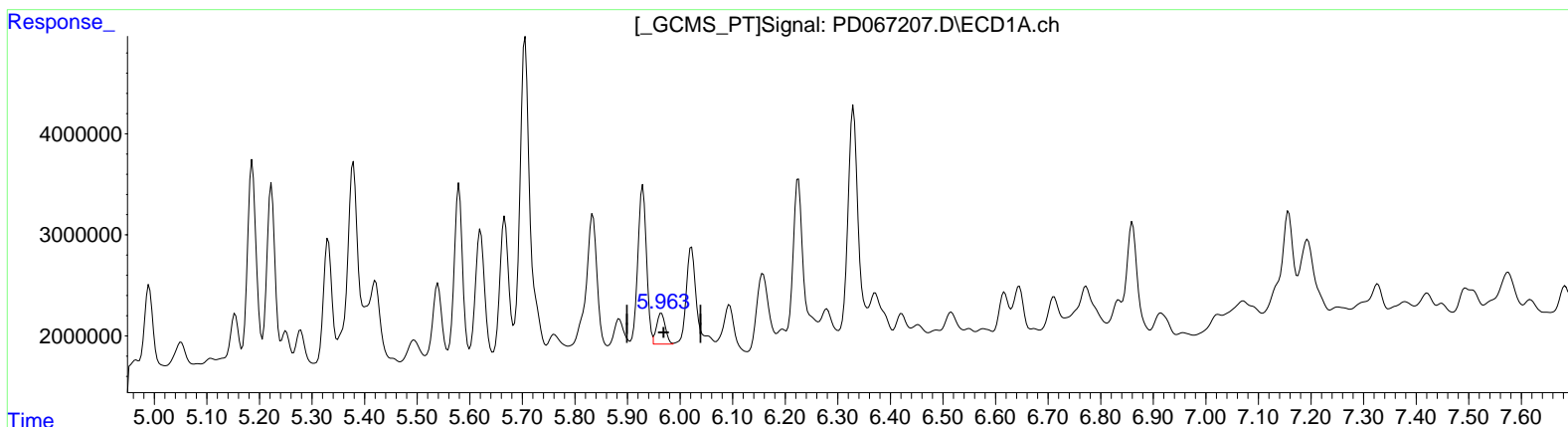
Instrument :
 ECD_D
 ClientSampleId :
 ESQN9

Manual Integrations APPROVED

Reviewed By : Abdul Mirza 12/03/2021
 Supervised By : mohammad ahmed 12/07/2021

Integration File signal 1: autoint1.e
 Integration File signal 2: autoint2.e
 Quant Time: Dec 03 04:55:40 2021
 Quant Method : Z:\pestpcbsrv\HPCHEM1\ECD_D\Method\PD112921CLP.M
 Quant Title : GC Extractables
 QLast Update : Tue Nov 30 05:28:01 2021
 Response via : Initial Calibration
 Integrator: ChemStation

Volume Inj. : 1 µl
 Signal #1 Phase : ZB-MR2 Signal #2 Phase: ZB-MR1
 Signal #1 Info : 30M x 0.32mm x 0.2 Signal #2 Info : 30M x 0.32mm x 0.50µm



(14) Endrin (MA)
 5.963min 1.539 ng/ml m
 response 3519970

(14) Endrin #2 (MA)
 6.665min 9.140 ng/ml
 response 53027383

Data Path : Z:\pestpcbsrv\HPCHEM1\ECD_D\Data\PD120321\
 Data File : PD067207.D
 Signal(s) : Signal #1: ECD1A.ch Signal #2: ECD2B.ch
 Acq On : 02 Dec 2021 13:49
 Operator : AR\AJ
 Sample : M4833-22
 Misc :
 ALS Vial : 23 Sample Multiplier: 1

Instrument :

ECD_D

ClientSampleId :

ESQN9

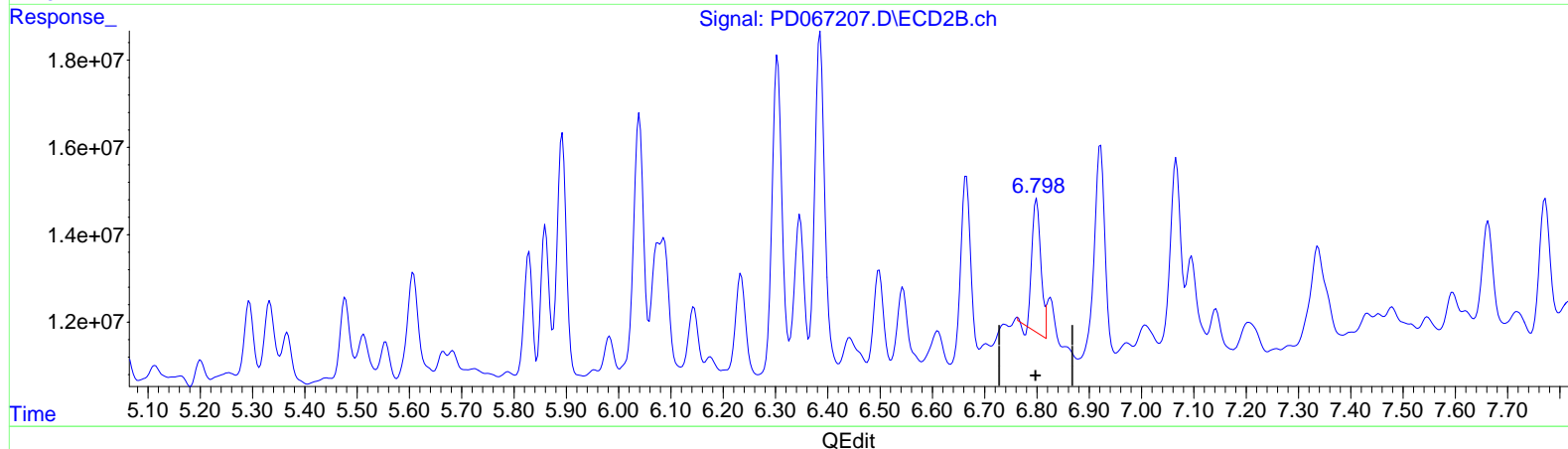
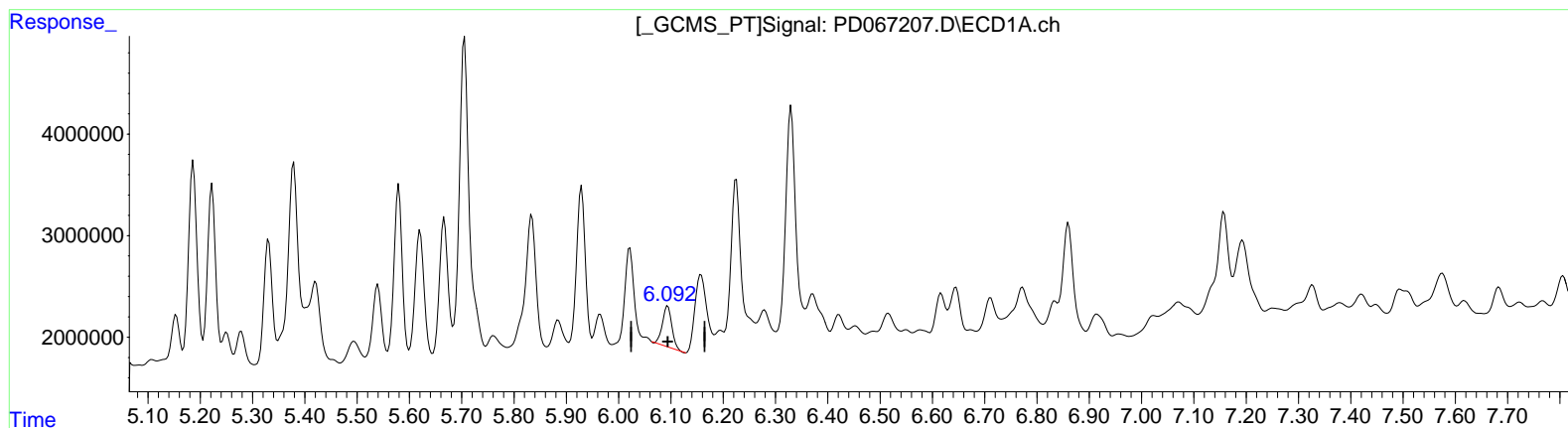
Manual IntegrationsAPPROVED

Reviewed By :Abdul Mirza 12/03/2021

Supervised By :mohammad ahmed 12/07/2021

Integration File signal 1: autoint1.e
 Integration File signal 2: autoint2.e
 Quant Time: Dec 03 04:55:40 2021
 Quant Method : Z:\pestpcbsrv\HPCHEM1\ECD_D\Method\PD112921CLP.M
 Quant Title : GC Extractables
 QLast Update : Tue Nov 30 05:28:01 2021
 Response via : Initial Calibration
 Integrator: ChemStation

Volume Inj. : 1 µl
 Signal #1 Phase : ZB-MR2 Signal #2 Phase: ZB-MR1
 Signal #1 Info : 30M x 0.32mm x0.2 Signal #2 Info : 30M x 0.32mm x 0.50µm



(16) 4,4'-DDD (A)
 6.094min 2.384 ng/ml
 response 5040325

(16) 4,4'-DDD #2 (A)
 6.799min 6.050 ng/ml
 response 35382940

Data Path : Z:\pestpcbsrv\HPCHEM1\ECD_D\Data\PD120321\
 Data File : PD067207.D
 Signal(s) : Signal #1: ECD1A.ch Signal #2: ECD2B.ch
 Acq On : 02 Dec 2021 13:49
 Operator : AR\AJ
 Sample : M4833-22
 Misc :
 ALS Vial : 23 Sample Multiplier: 1

Instrument :

ECD_D

ClientSampleId :

ESQN9

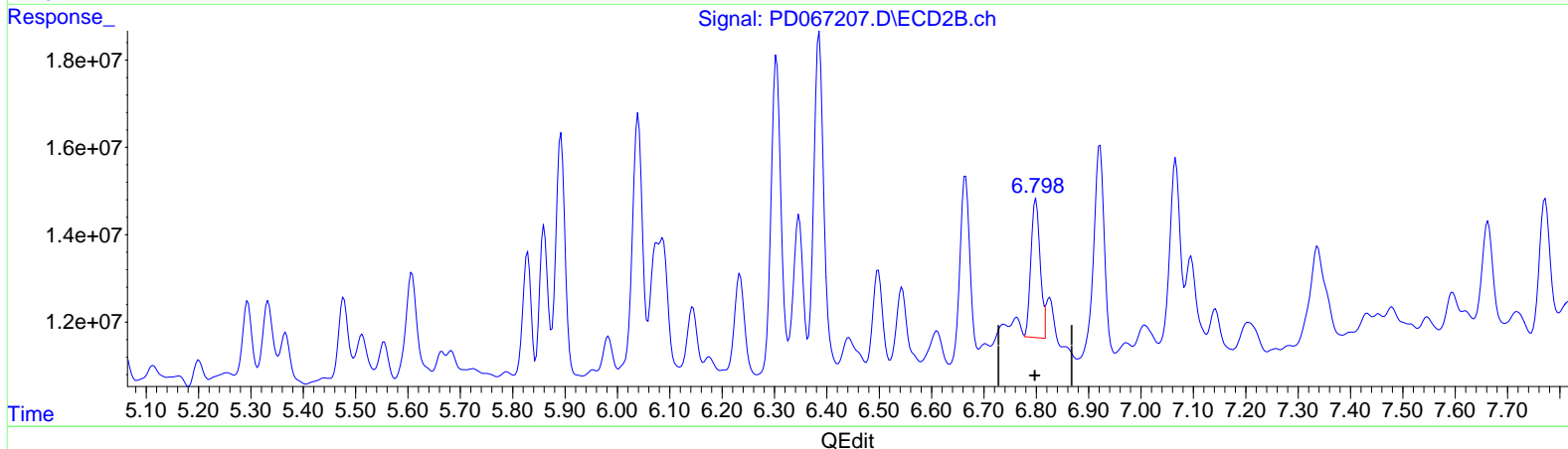
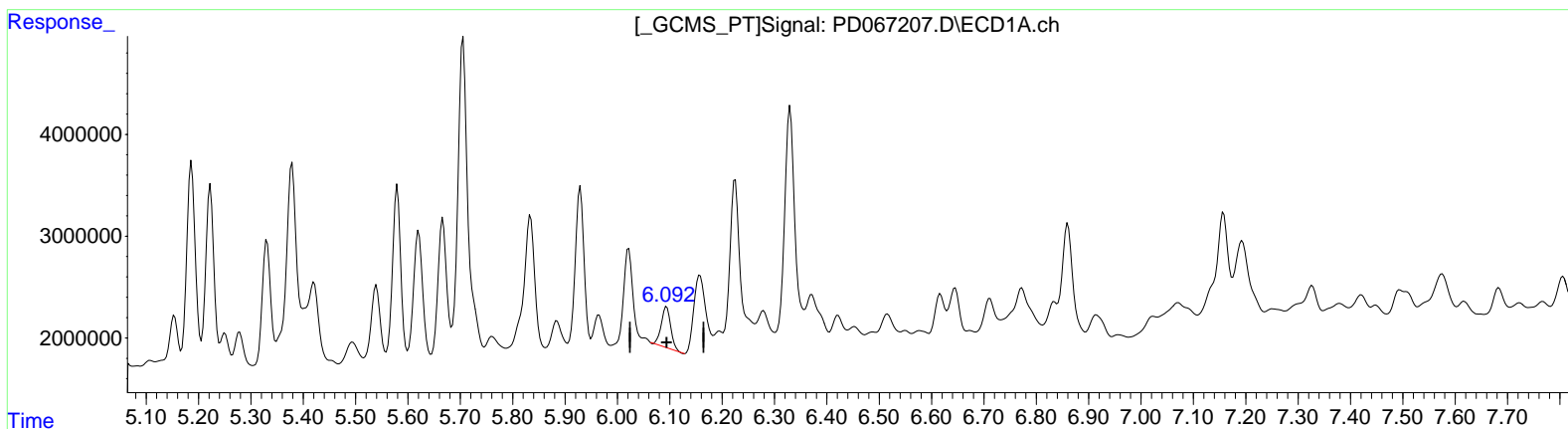
Manual IntegrationsAPPROVED

Reviewed By :Abdul Mirza 12/03/2021

Supervised By :mohammad ahmed 12/07/2021

Integration File signal 1: autoint1.e
 Integration File signal 2: autoint2.e
 Quant Time: Dec 03 04:55:40 2021
 Quant Method : Z:\pestpcbsrv\HPCHEM1\ECD_D\Method\PD112921CLP.M
 Quant Title : GC Extractables
 QLast Update : Tue Nov 30 05:28:01 2021
 Response via : Initial Calibration
 Integrator: ChemStation

Volume Inj. : 1 µl
 Signal #1 Phase : ZB-MR2 Signal #2 Phase: ZB-MR1
 Signal #1 Info : 30M x 0.32mm x0.2 Signal #2 Info : 30M x 0.32mm x 0.50µm



(16) 4,4'-DDD (A)
 6.094min 2.384 ng/ml
 response 5040325

(16) 4,4'-DDD #2 (A)
 6.798min 6.637 ng/ml m
 response 38814347

Data Path : Z:\pestpcbsrv\HPCHEM1\ECD_D\Data\PD120321\
 Data File : PD067207.D
 Signal(s) : Signal #1: ECD1A.ch Signal #2: ECD2B.ch
 Acq On : 02 Dec 2021 13:49
 Operator : AR\AJ
 Sample : M4833-22
 Misc :
 ALS Vial : 23 Sample Multiplier: 1

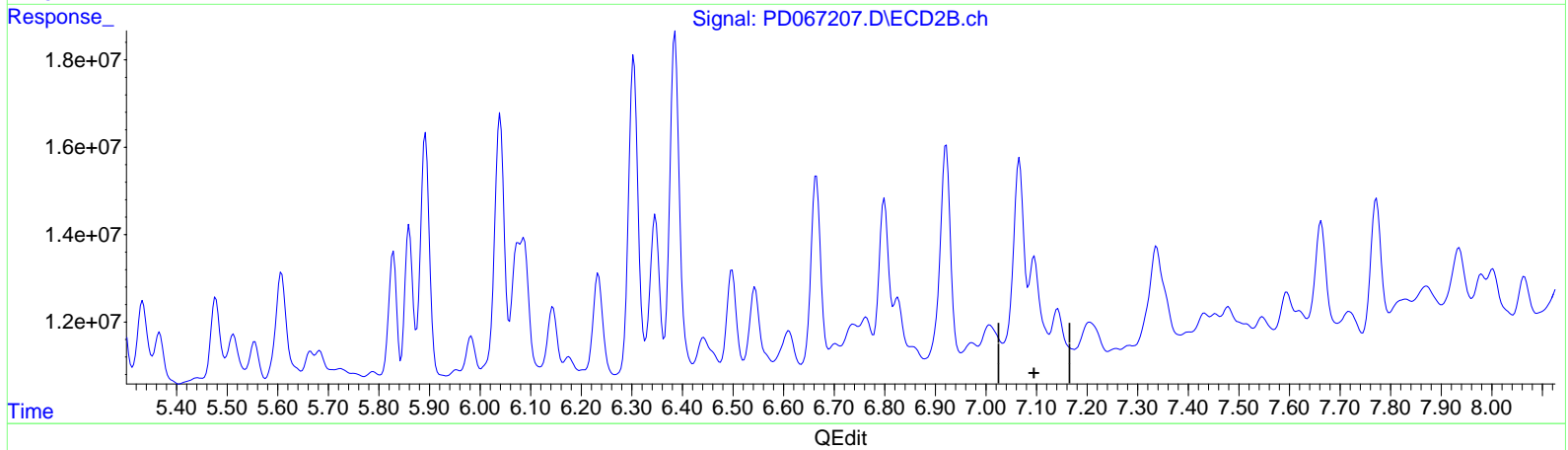
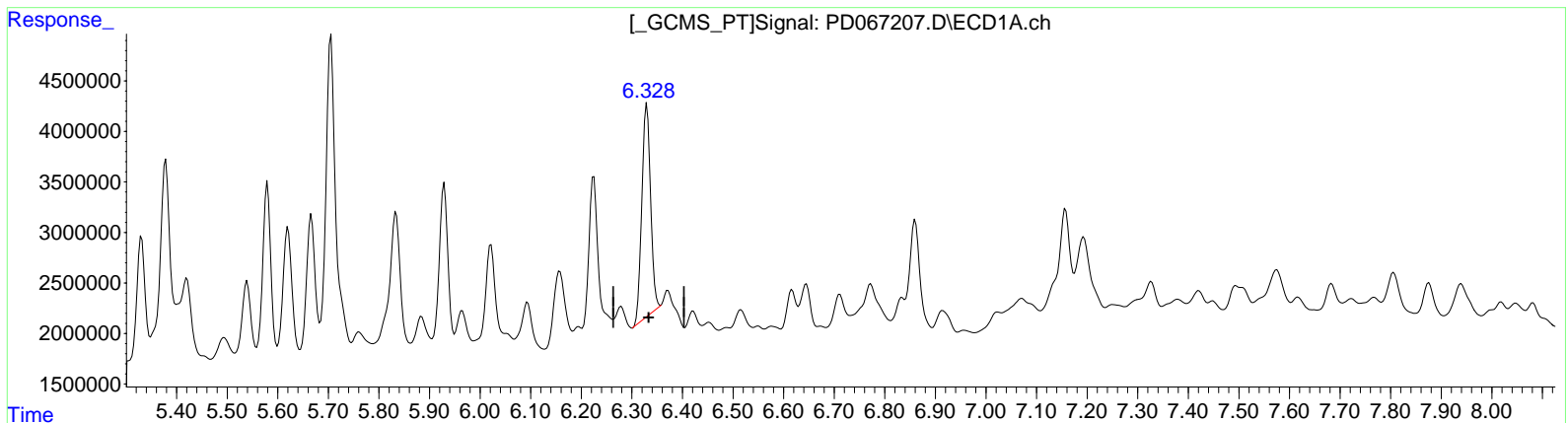
Instrument :
 ECD_D
 ClientSampleId :
 ESQN9

Manual Integrations APPROVED

Reviewed By : Abdul Mirza 12/03/2021
 Supervised By : mohammad ahmed 12/07/2021

Integration File signal 1: autoint1.e
 Integration File signal 2: autoint2.e
 Quant Time: Dec 03 04:55:40 2021
 Quant Method : Z:\pestpcbsrv\HPCHEM1\ECD_D\Method\PD112921CLP.M
 Quant Title : GC Extractables
 QLast Update : Tue Nov 30 05:28:01 2021
 Response via : Initial Calibration
 Integrator: ChemStation

Volume Inj. : 1 µl
 Signal #1 Phase : ZB-MR2 Signal #2 Phase: ZB-MR1
 Signal #1 Info : 30M x 0.32mm x 0.2 Signal #2 Info : 30M x 0.32mm x 0.50µm



(17) 4,4'-DDT (MA)
 6.330min 11.867 ng/ml
 response 25227047

(17) 4,4'-DDT #2 (MA)
 7.096min -1.493 ng/ml
 response -8604069

Data Path : Z:\pestpcbsrv\HPCHEM1\ECD_D\Data\PD120321\
 Data File : PD067207.D
 Signal(s) : Signal #1: ECD1A.ch Signal #2: ECD2B.ch
 Acq On : 02 Dec 2021 13:49
 Operator : AR\AJ
 Sample : M4833-22
 Misc :
 ALS Vial : 23 Sample Multiplier: 1

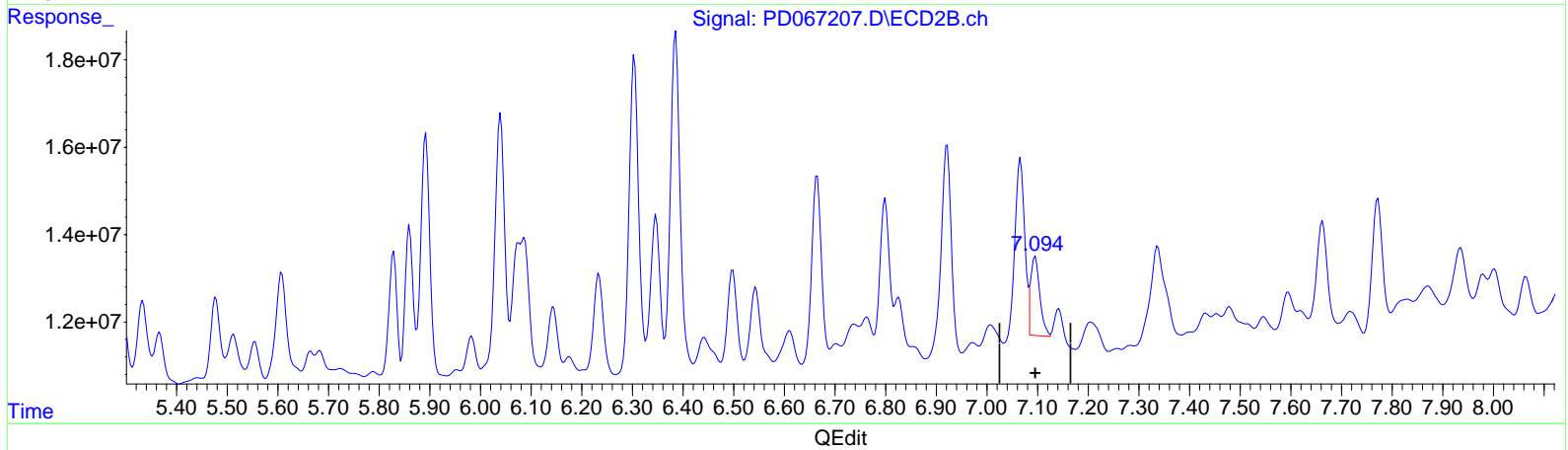
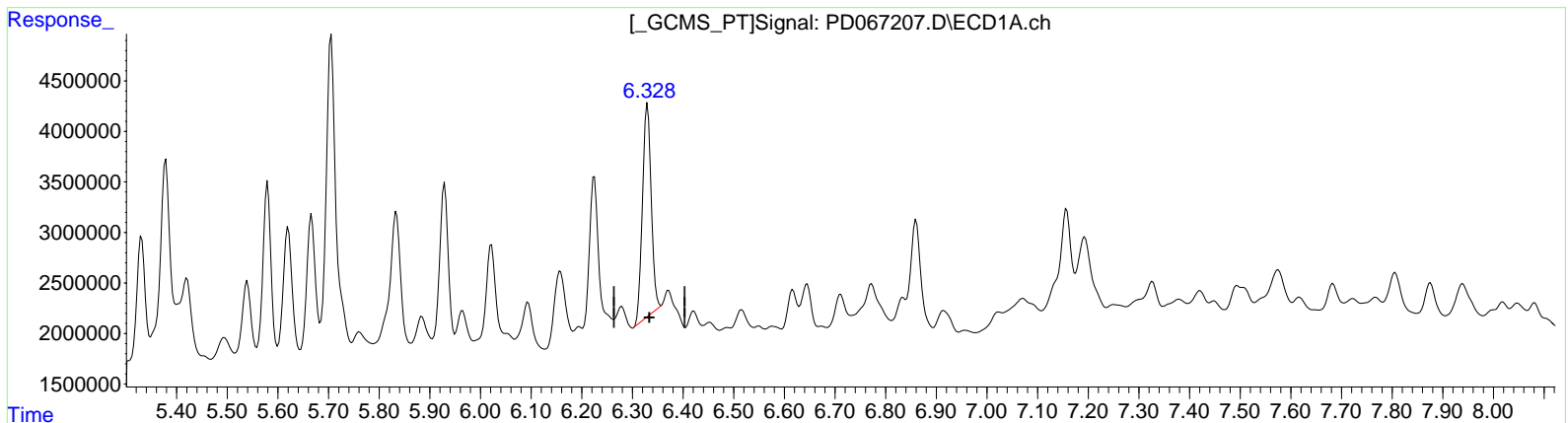
Instrument :
 ECD_D
 ClientSampleId :
 ESQN9

Manual Integrations APPROVED

Reviewed By : Abdul Mirza 12/03/2021
 Supervised By : mohammad ahmed 12/07/2021

Integration File signal 1: autoint1.e
 Integration File signal 2: autoint2.e
 Quant Time: Dec 03 04:55:40 2021
 Quant Method : Z:\pestpcbsrv\HPCHEM1\ECD_D\Method\PD112921CLP.M
 Quant Title : GC Extractables
 QLast Update : Tue Nov 30 05:28:01 2021
 Response via : Initial Calibration
 Integrator: ChemStation

Volume Inj. : 1 µl
 Signal #1 Phase : ZB-MR2 Signal #2 Phase: ZB-MR1
 Signal #1 Info : 30M x 0.32mm x 0.2 Signal #2 Info : 30M x 0.32mm x 0.50µm



(17) 4,4'-DDT (MA)
 6.330min 11.867 ng/ml
 response 25227047

(17) 4,4'-DDT #2 (MA)
 7.094min 3.816 ng/ml m
 response 21990657

Data Path : Z:\pestpcbsrv\HPCHEM1\ECD_D\Data\PD120321\
 Data File : PD067207.D
 Signal(s) : Signal #1: ECD1A.ch Signal #2: ECD2B.ch
 Acq On : 02 Dec 2021 13:49
 Operator : AR\AJ
 Sample : M4833-22
 Misc :
 ALS Vial : 23 Sample Multiplier: 1

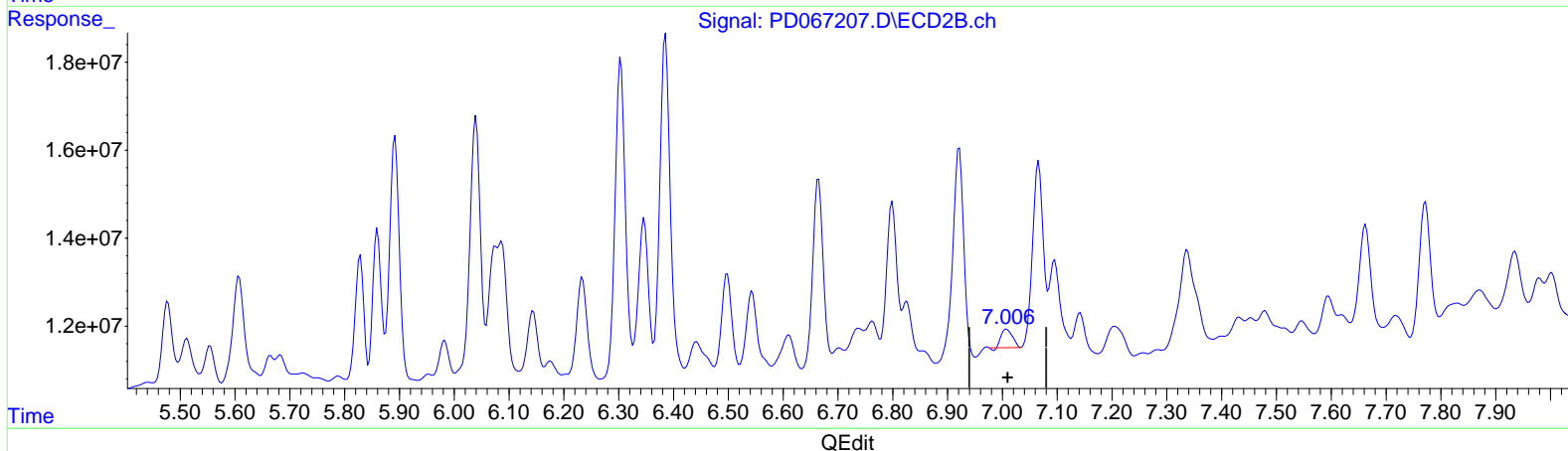
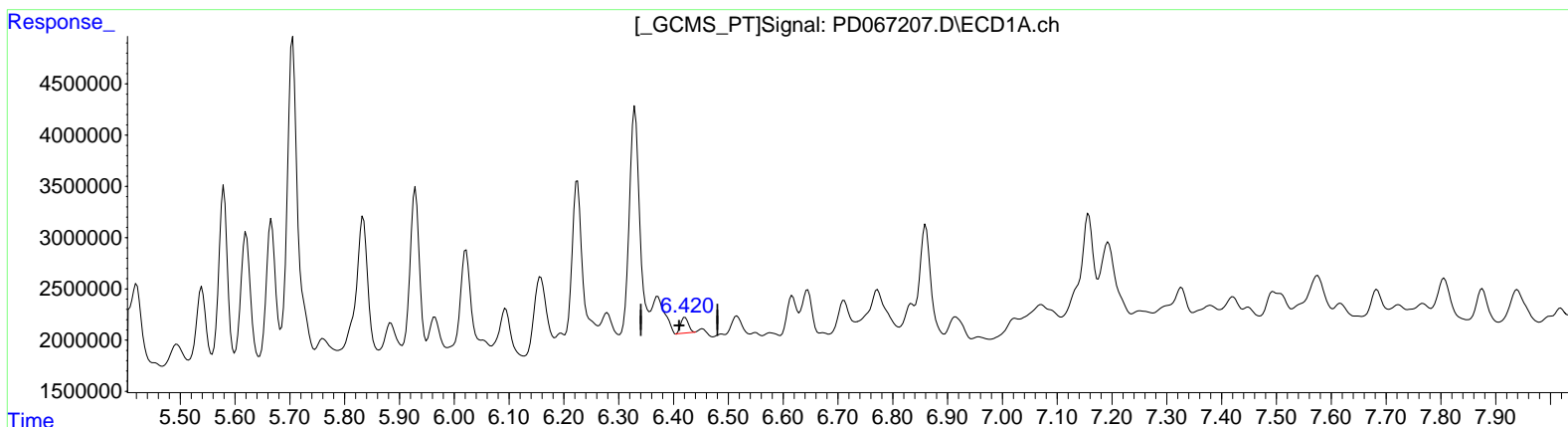
Instrument :
 ECD_D
 ClientSampleId :
 ESQN9

Manual Integrations APPROVED

Reviewed By : Abdul Mirza 12/03/2021
 Supervised By : mohammad ahmed 12/07/2021

Integration File signal 1: autoint1.e
 Integration File signal 2: autoint2.e
 Quant Time: Dec 03 04:55:40 2021
 Quant Method : Z:\pestpcbsrv\HPCHEM1\ECD_D\Method\PD112921CLP.M
 Quant Title : GC Extractables
 QLast Update : Tue Nov 30 05:28:01 2021
 Response via : Initial Calibration
 Integrator: ChemStation

Volume Inj. : 1 µl
 Signal #1 Phase : ZB-MR2 Signal #2 Phase: ZB-MR1
 Signal #1 Info : 30M x 0.32mm x 0.2 Signal #2 Info : 30M x 0.32mm x 0.50µm



(18) Endrin aldehyde (B)
 6.421min 0.896 ng/ml
 response 1478356

(18) Endrin aldehyde #2 (B)
 7.008min 1.234 ng/ml
 response 5813544

Data Path : Z:\pestpcbsrv\HPCHEM1\ECD_D\Data\PD120321\
 Data File : PD067207.D
 Signal(s) : Signal #1: ECD1A.ch Signal #2: ECD2B.ch
 Acq On : 02 Dec 2021 13:49
 Operator : AR\AJ
 Sample : M4833-22
 Misc :
 ALS Vial : 23 Sample Multiplier: 1

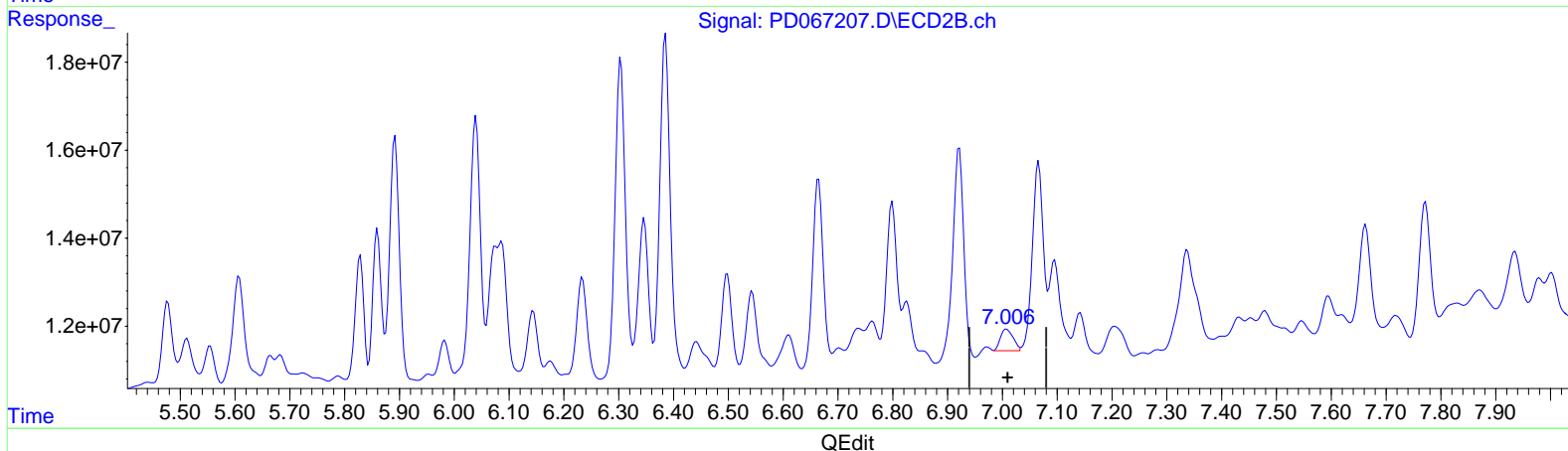
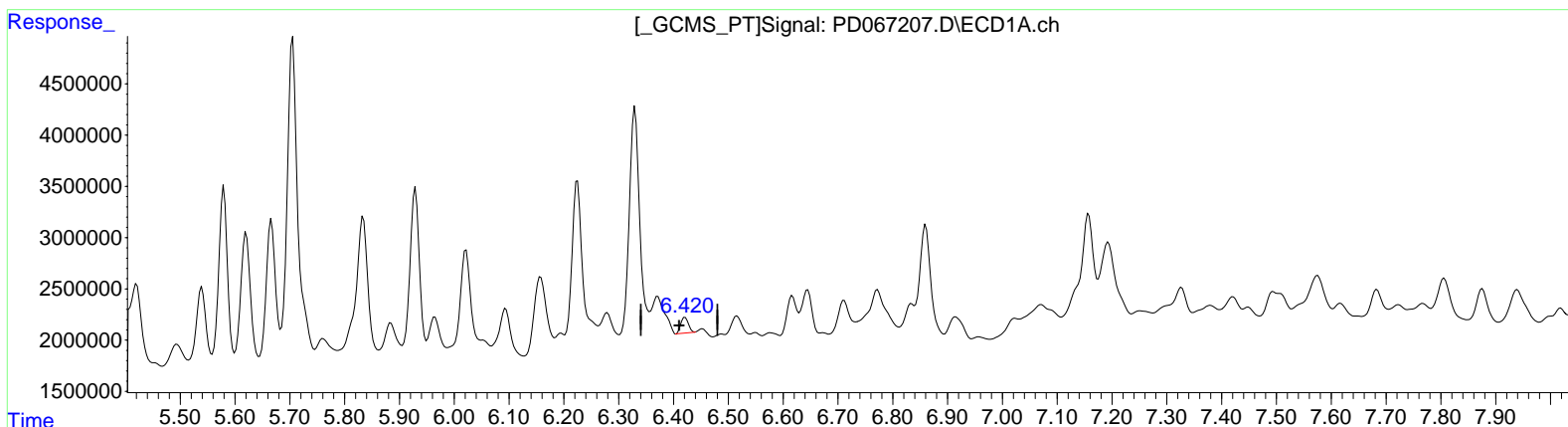
Instrument :
 ECD_D
 ClientSampleId :
 ESQN9

Manual Integrations APPROVED

Reviewed By : Abdul Mirza 12/03/2021
 Supervised By : mohammad ahmed 12/07/2021

Integration File signal 1: autoint1.e
 Integration File signal 2: autoint2.e
 Quant Time: Dec 03 04:55:40 2021
 Quant Method : Z:\pestpcbsrv\HPCHEM1\ECD_D\Method\PD112921CLP.M
 Quant Title : GC Extractables
 QLast Update : Tue Nov 30 05:28:01 2021
 Response via : Initial Calibration
 Integrator: ChemStation

Volume Inj. : 1 µl
 Signal #1 Phase : ZB-MR2 Signal #2 Phase: ZB-MR1
 Signal #1 Info : 30M x 0.32mm x 0.2 Signal #2 Info : 30M x 0.32mm x 0.50µm



(18) Endrin aldehyde (B)
 6.421min 0.896 ng/ml
 response 1478356

(18) Endrin aldehyde #2 (B)
 7.006min 1.705 ng/ml m
 response 8037688

Data Path : Z:\pestpcbsrv\HPCHEM1\ECD_D\Data\PD120321\
 Data File : PD067207.D
 Signal(s) : Signal #1: ECD1A.ch Signal #2: ECD2B.ch
 Acq On : 02 Dec 2021 13:49
 Operator : AR\AJ
 Sample : M4833-22
 Misc :
 ALS Vial : 23 Sample Multiplier: 1

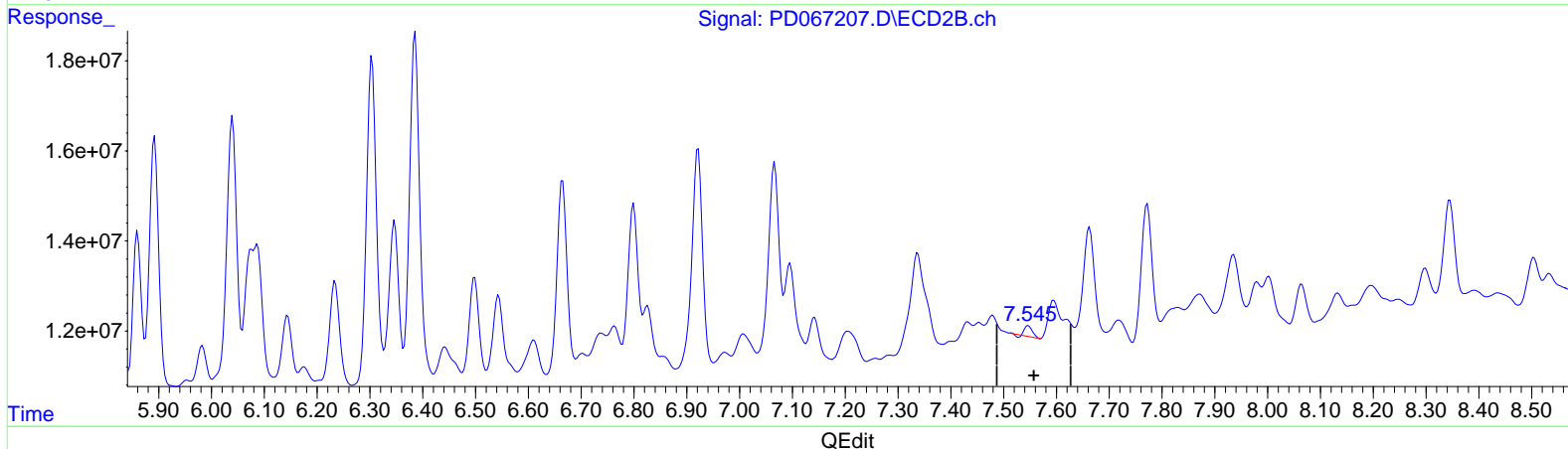
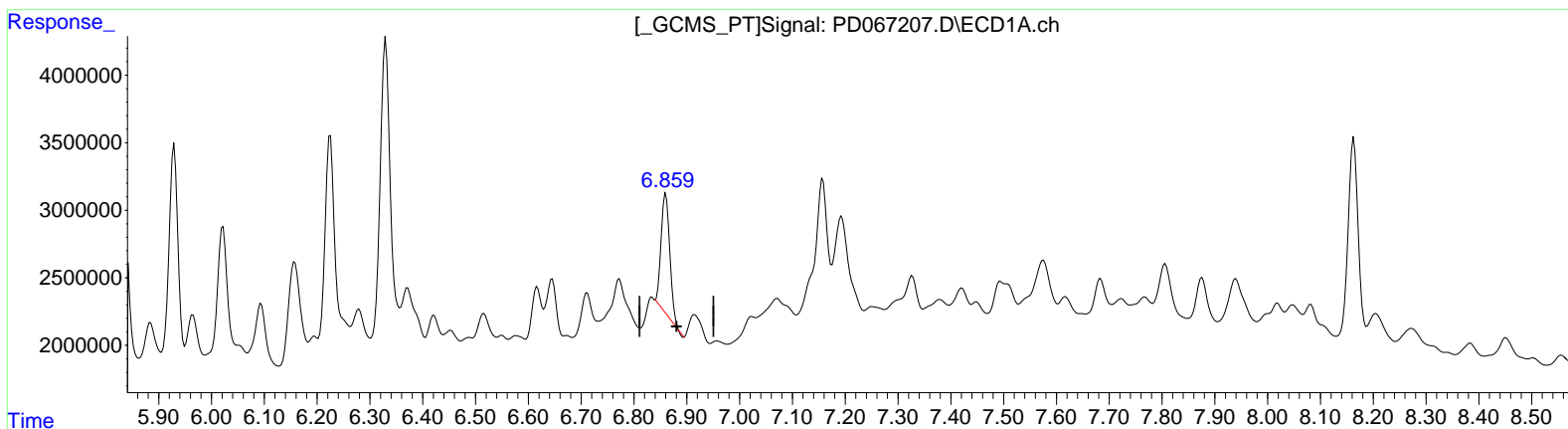
Instrument :
 ECD_D
 ClientSampleId :
 ESQN9

Manual Integrations APPROVED

Reviewed By : Abdul Mirza 12/03/2021
 Supervised By : mohammad ahmed 12/07/2021

Integration File signal 1: autoint1.e
 Integration File signal 2: autoint2.e
 Quant Time: Dec 03 04:55:40 2021
 Quant Method : Z:\pestpcbsrv\HPCHEM1\ECD_D\Method\PD112921CLP.M
 Quant Title : GC Extractables
 QLast Update : Tue Nov 30 05:28:01 2021
 Response via : Initial Calibration
 Integrator: ChemStation

Volume Inj. : 1 µl
 Signal #1 Phase : ZB-MR2 Signal #2 Phase: ZB-MR1
 Signal #1 Info : 30M x 0.32mm x 0.2 Signal #2 Info : 30M x 0.32mm x 0.50µm



(20) Methoxychlor (A)
 6.860min 10.325 ng/ml
 response 10260758

(20) Methoxychlor #2 (A)
 7.547min 0.826 ng/ml
 response 2299242

Data Path : Z:\pestpcbsrv\HPCHEM1\ECD_D\Data\PD120321\
 Data File : PD067207.D
 Signal(s) : Signal #1: ECD1A.ch Signal #2: ECD2B.ch
 Acq On : 02 Dec 2021 13:49
 Operator : AR\AJ
 Sample : M4833-22
 Misc :
 ALS Vial : 23 Sample Multiplier: 1

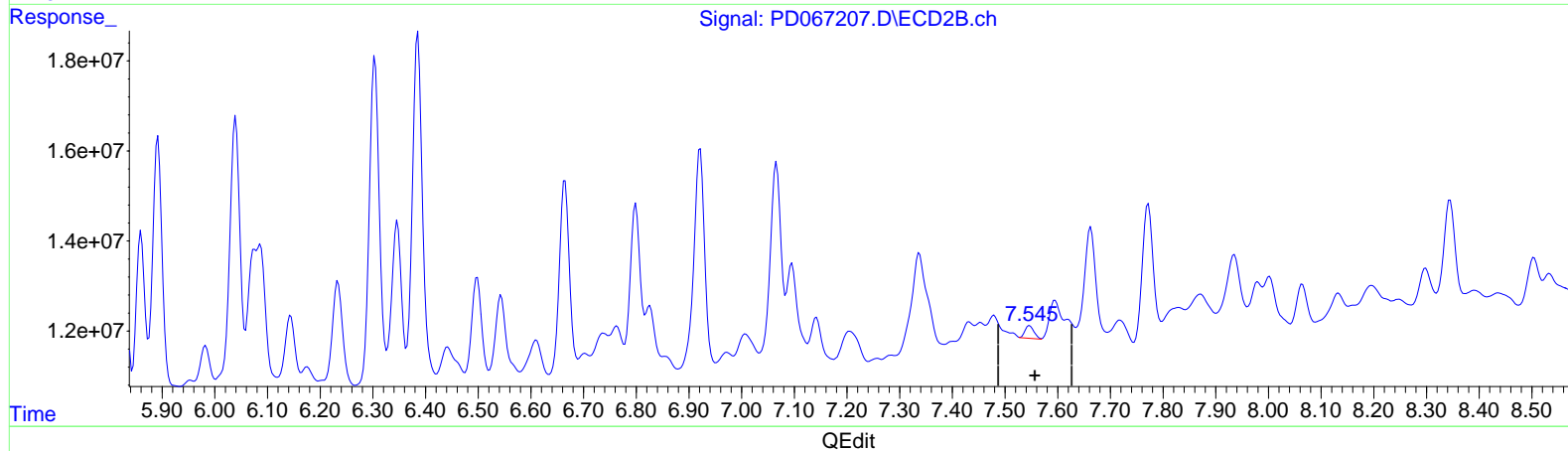
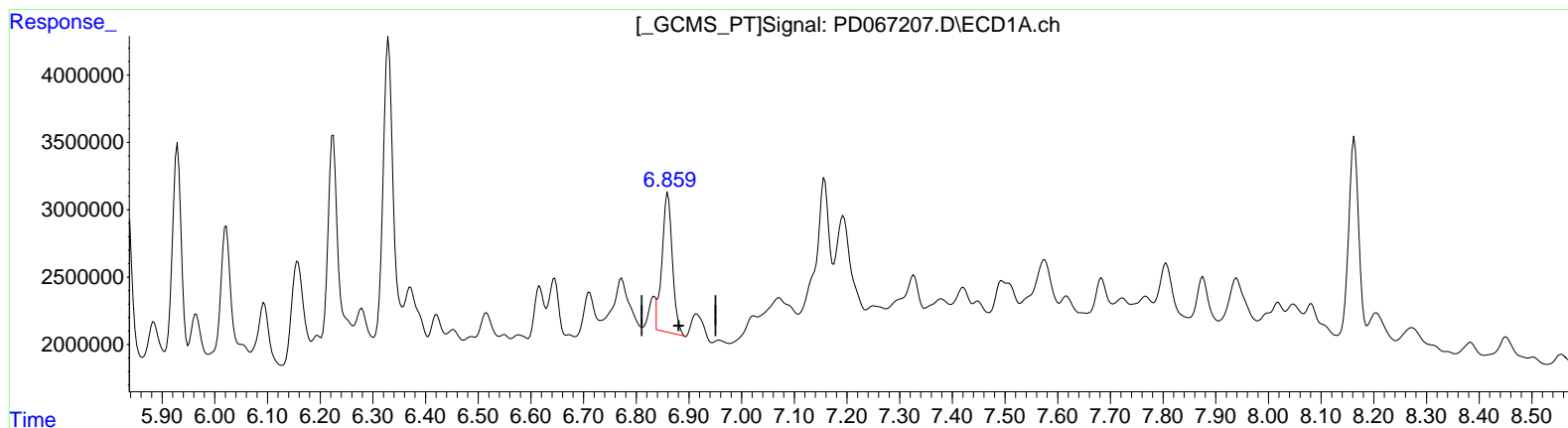
Instrument :
 ECD_D
 ClientSampleId :
 ESQN9

Manual Integrations APPROVED

Reviewed By : Abdul Mirza 12/03/2021
 Supervised By : mohammad ahmed 12/07/2021

Integration File signal 1: autoint1.e
 Integration File signal 2: autoint2.e
 Quant Time: Dec 03 04:55:40 2021
 Quant Method : Z:\pestpcbsrv\HPCHEM1\ECD_D\Method\PD112921CLP.M
 Quant Title : GC Extractables
 QLast Update : Tue Nov 30 05:28:01 2021
 Response via : Initial Calibration
 Integrator: ChemStation

Volume Inj. : 1 µl
 Signal #1 Phase : ZB-MR2 Signal #2 Phase: ZB-MR1
 Signal #1 Info : 30M x 0.32mm x 0.2 Signal #2 Info : 30M x 0.32mm x 0.50µm



(20) Methoxychlor (A)
 6.859min 14.247 ng/ml m
 response 14157913

(20) Methoxychlor #2 (A)
 7.545min 1.214 ng/ml m
 response 3380226

Data Path : Z:\pestpcbsrv\HPCHEM1\ECD_D\Data\PD120321\
 Data File : PD067207.D
 Signal(s) : Signal #1: ECD1A.ch Signal #2: ECD2B.ch
 Acq On : 02 Dec 2021 13:49
 Operator : AR\AJ
 Sample : M4833-22
 Misc :
 ALS Vial : 23 Sample Multiplier: 1

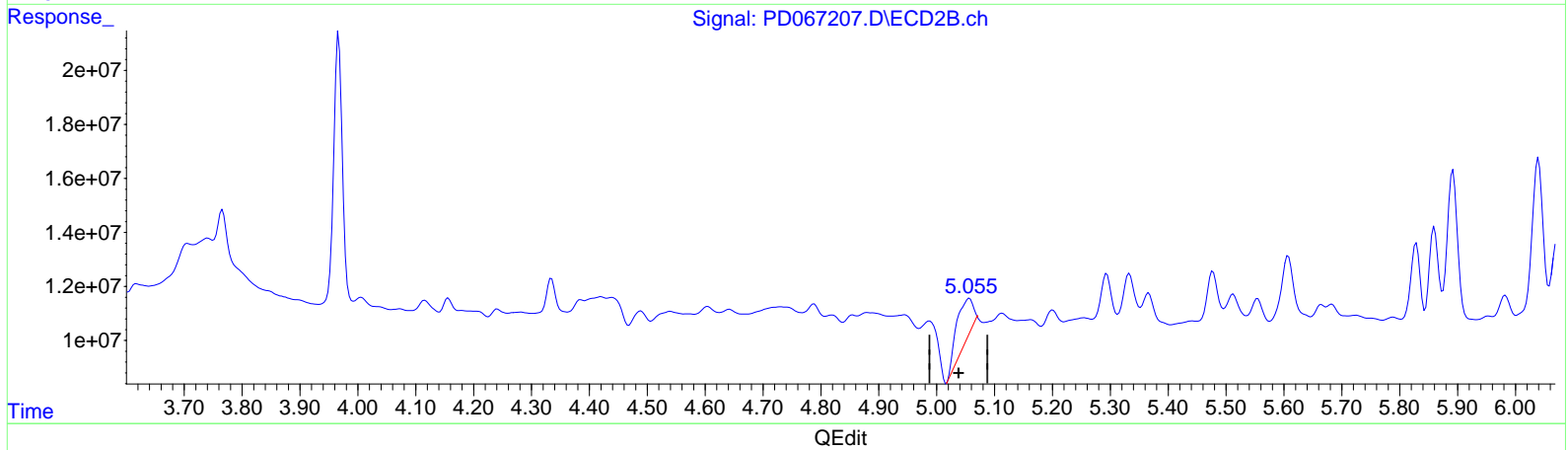
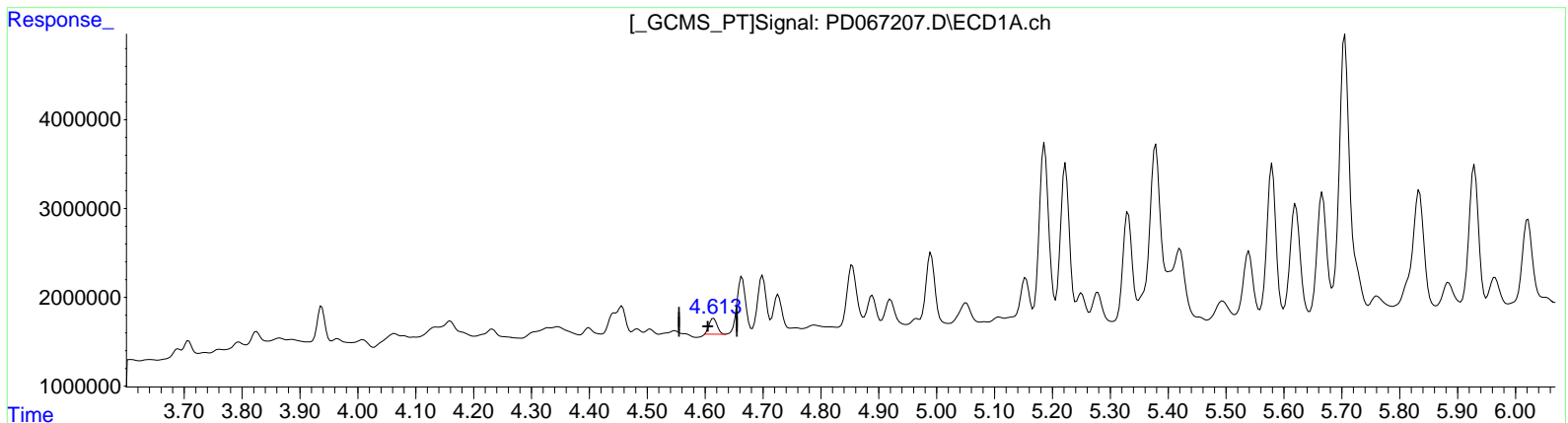
Instrument :
 ECD_D
 ClientSampleId :
 ESQN9

Manual Integrations APPROVED

Reviewed By : Abdul Mirza 12/03/2021
 Supervised By : mohammad ahmed 12/07/2021

Integration File signal 1: autoint1.e
 Integration File signal 2: autoint2.e
 Quant Time: Dec 07 02:03:37 2021
 Quant Method : Z:\pestpcbsrv\HPCHEM1\ECD_D\Method\PD112921CLP.M
 Quant Title : GC Extractables
 QLast Update : Tue Nov 30 05:28:01 2021
 Response via : Initial Calibration
 Integrator: ChemStation

Volume Inj. : 1 µl
 Signal #1 Phase : ZB-MR2 Signal #2 Phase: ZB-MR1
 Signal #1 Info : 30M x 0.32mm x 0.2 Signal #2 Info : 30M x 0.32mm x 0.50µm



(7) delta-BHC (B)
 4.615min 0.602 ng/ml
 response 1721706

(7) delta-BHC #2 (B)
 5.057min 3.353 ng/ml
 response 29679528

Data Path : Z:\pestpcbsrv\HPCHEM1\ECD_D\Data\PD120321\
 Data File : PD067207.D
 Signal(s) : Signal #1: ECD1A.ch Signal #2: ECD2B.ch
 Acq On : 02 Dec 2021 13:49
 Operator : AR\AJ
 Sample : M4833-22
 Misc :
 ALS Vial : 23 Sample Multiplier: 1

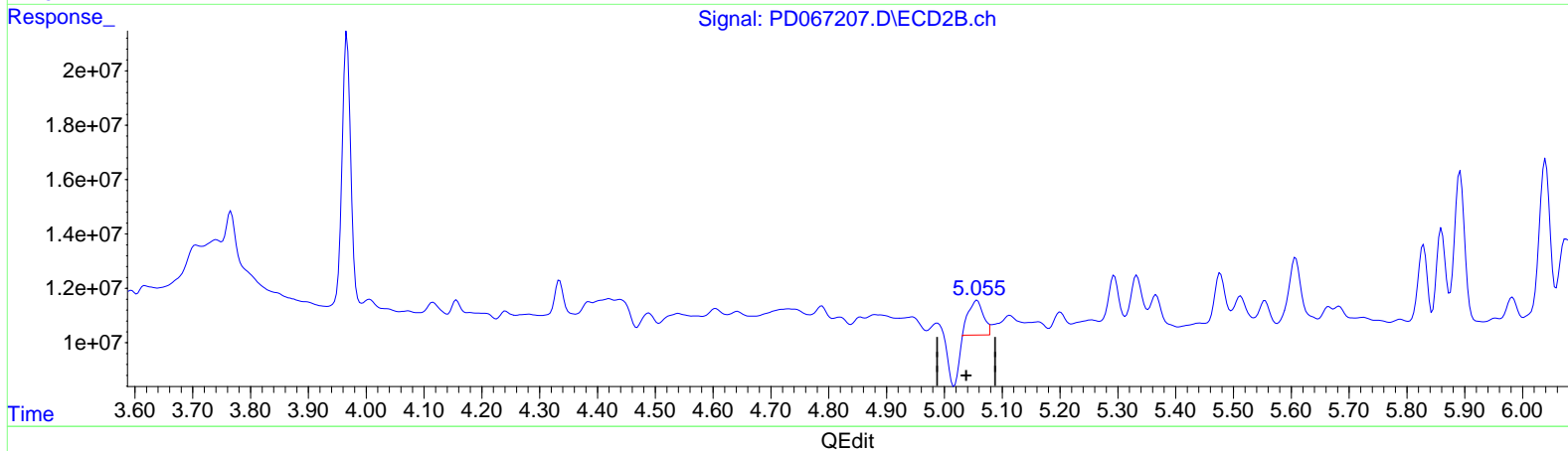
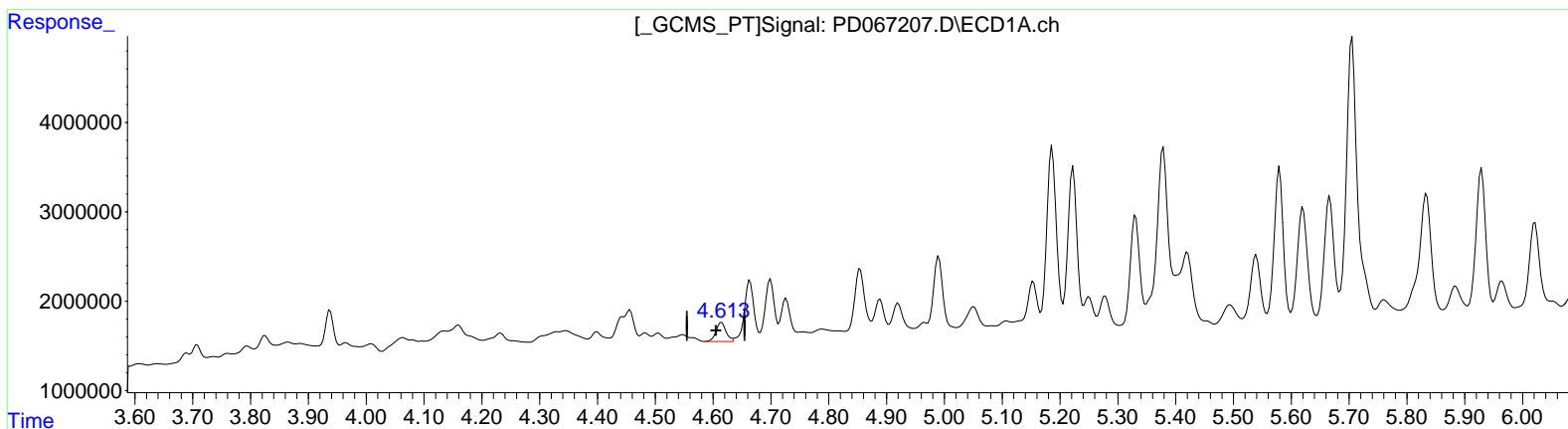
Instrument :
 ECD_D
 ClientSampleId :
 ESQN9

Manual Integrations APPROVED

Reviewed By : Abdul Mirza 12/03/2021
 Supervised By : mohammad ahmed 12/07/2021

Integration File signal 1: autoint1.e
 Integration File signal 2: autoint2.e
 Quant Time: Dec 03 04:55:40 2021
 Quant Method : Z:\pestpcbsrv\HPCHEM1\ECD_D\Method\PD112921CLP.M
 Quant Title : GC Extractables
 QLast Update : Tue Nov 30 05:28:01 2021
 Response via : Initial Calibration
 Integrator: ChemStation

Volume Inj. : 1 µl
 Signal #1 Phase : ZB-MR2 Signal #2 Phase: ZB-MR1
 Signal #1 Info : 30M x 0.32mm x 0.2 Signal #2 Info : 30M x 0.32mm x 0.50µm



(7) delta-BHC (B)
 4.613min 0.883 ng/ml m
 response 2526314

(7) delta-BHC #2 (B)
 5.055min 2.710 ng/ml m
 response 23989457

Quantitation Report (Qedit)

Data Path : Z:\pestpcbsrv\HPCHEM1\ECD_D\Data\PD120321\
Data File : PD067207.D
Signal(s) : Signal #1: ECD1A.ch Signal #2: ECD2B.ch
Acq On : 02 Dec 2021 13:49
Operator : AR\AJ
Sample : M4833-22
Misc :
ALS Vial : 23 Sample Multiplier: 1

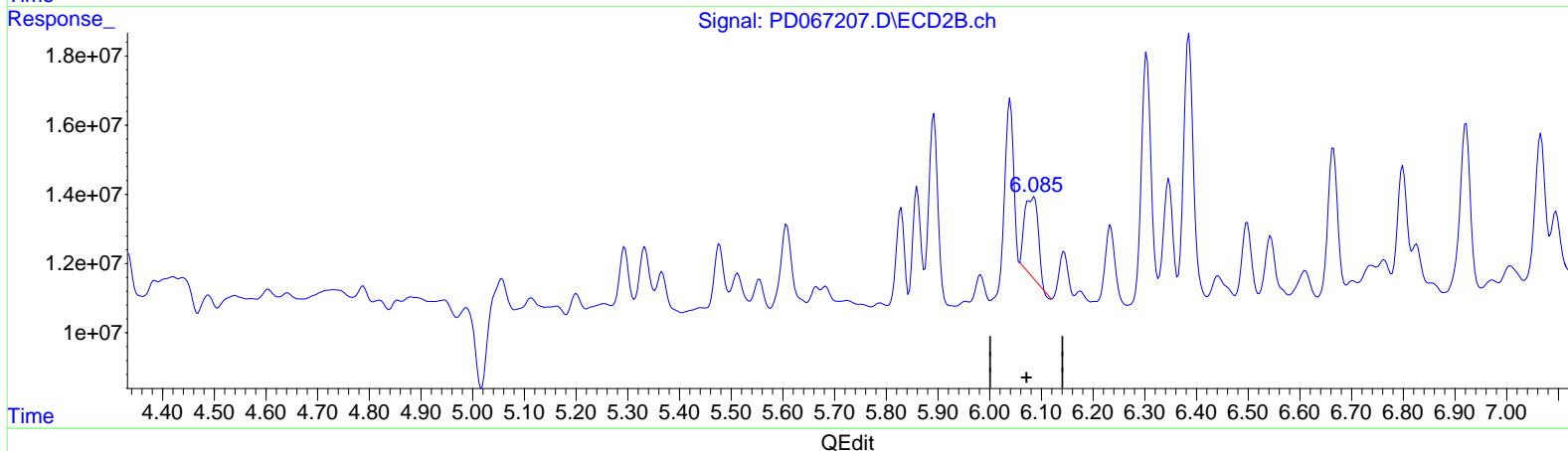
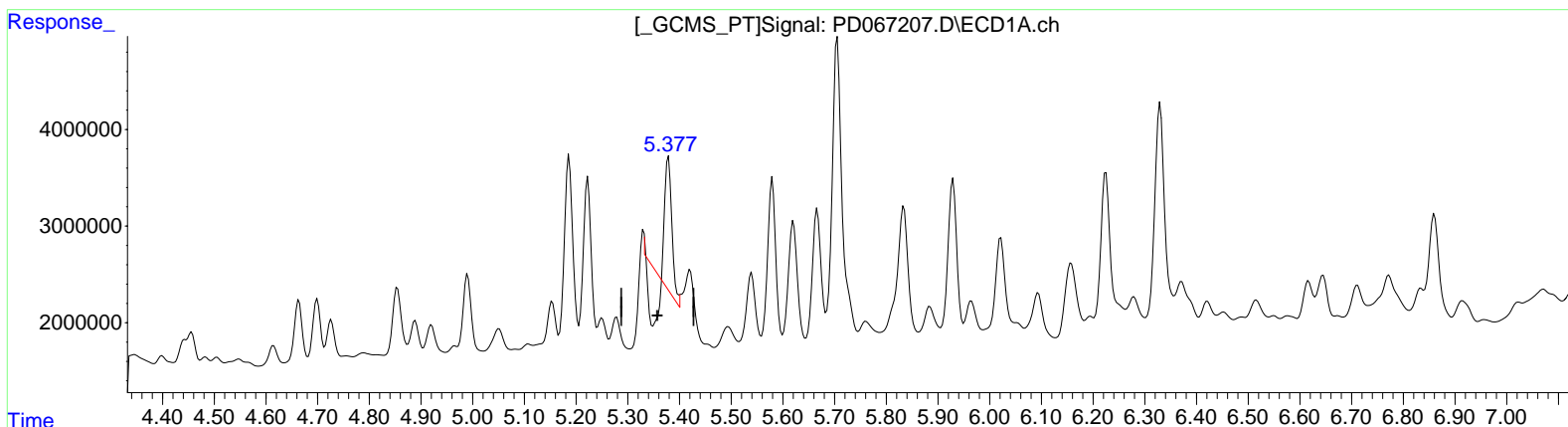
Instrument :
ECD_D
ClientSampleId :
ESQN9

Manual IntegrationsAPPROVED

Reviewed By :Abdul Mirza 12/03/2021
Supervised By :mohammad ahmed 12/07/2021

Integration File signal 1: autoint1.e
Integration File signal 2: autoint2.e
Quant Time: Dec 07 02:03:37 2021
Quant Method : Z:\pestpcbsrv\HPCHEM1\ECD_D\Method\PD112921CLP.M
Quant Title : GC Extractables
QLast Update : Tue Nov 30 05:28:01 2021
Response via : Initial Calibration
Integrator: ChemStation

Volume Inj. : 1 µl
Signal #1 Phase : ZB-MR2 Signal #2 Phase: ZB-MR1
Signal #1 Info : 30M x 0.32mm x0.2 Signal #2 Info : 30M x 0.32mm x 0.50µm



(10) trans-Chlordane (B)
5.379min 2.531 ng/ml
response 7132041

(10) trans-Chlordane #2 (B)
6.086min 5.499 ng/ml
response 41737744

(+) = Expected Retention Time

Data Path : Z:\pestpcbsrv\HPCHEM1\ECD_D\Data\PD120321\
 Data File : PD067207.D
 Signal(s) : Signal #1: ECD1A.ch Signal #2: ECD2B.ch
 Acq On : 02 Dec 2021 13:49
 Operator : AR\AJ
 Sample : M4833-22
 Misc :
 ALS Vial : 23 Sample Multiplier: 1

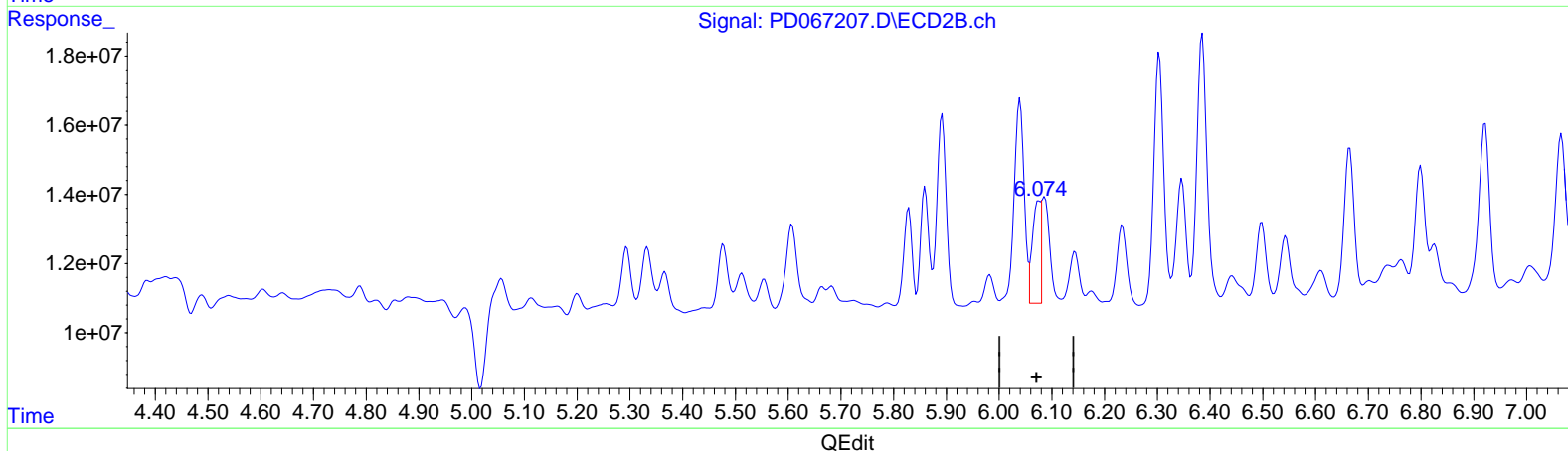
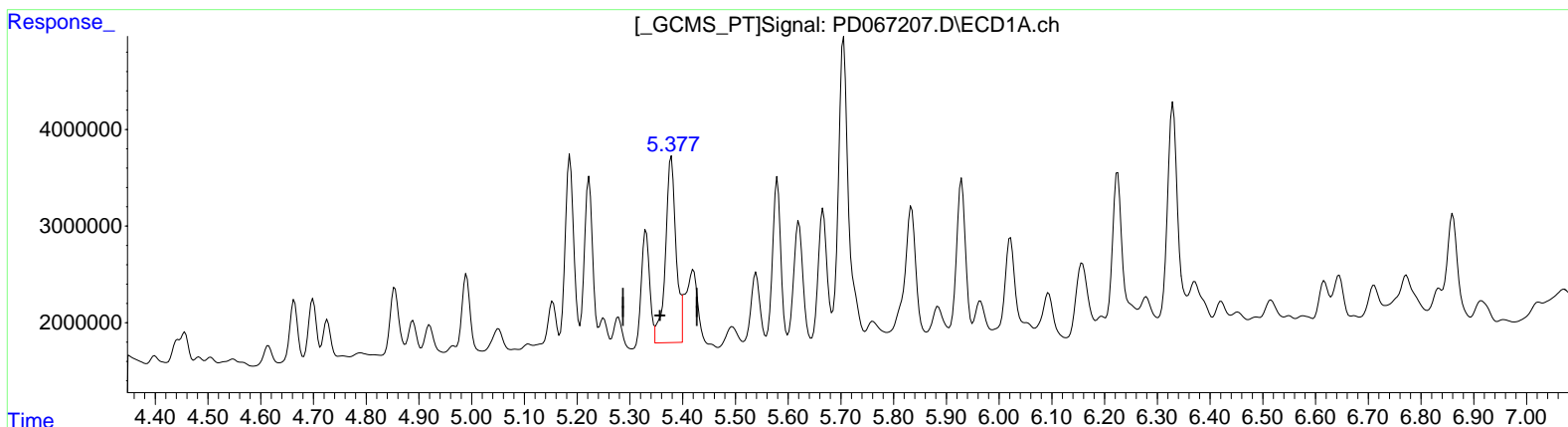
Instrument :
 ECD_D
 ClientSampleId :
 ESQN9

Manual Integrations APPROVED

Reviewed By : Abdul Mirza 12/03/2021
 Supervised By : mohammad ahmed 12/07/2021

Integration File signal 1: autoint1.e
 Integration File signal 2: autoint2.e
 Quant Time: Dec 03 04:55:40 2021
 Quant Method : Z:\pestpcbsrv\HPCHEM1\ECD_D\Method\PD112921CLP.M
 Quant Title : GC Extractables
 QLast Update : Tue Nov 30 05:28:01 2021
 Response via : Initial Calibration
 Integrator: ChemStation

Volume Inj. : 1 µl
 Signal #1 Phase : ZB-MR2 Signal #2 Phase: ZB-MR1
 Signal #1 Info : 30M x 0.32mm x 0.2 Signal #2 Info : 30M x 0.32mm x 0.50µm



(10) trans-Chlordane (B)
 5.377min 9.748 ng/ml m
 response 27465406

(10) trans-Chlordane #2 (B)
 6.074min 4.125 ng/ml m
 response 31305708

Data Path : Z:\pestpcbsrv\HPCHEM1\ECD_D\Data\PD120321\
 Data File : PD067207.D
 Signal(s) : Signal #1: ECD1A.ch Signal #2: ECD2B.ch
 Acq On : 02 Dec 2021 13:49
 Operator : AR\AJ
 Sample : M4833-22
 Misc :
 ALS Vial : 23 Sample Multiplier: 1

Instrument :

ECD_D

ClientSampleId :

ESQN9

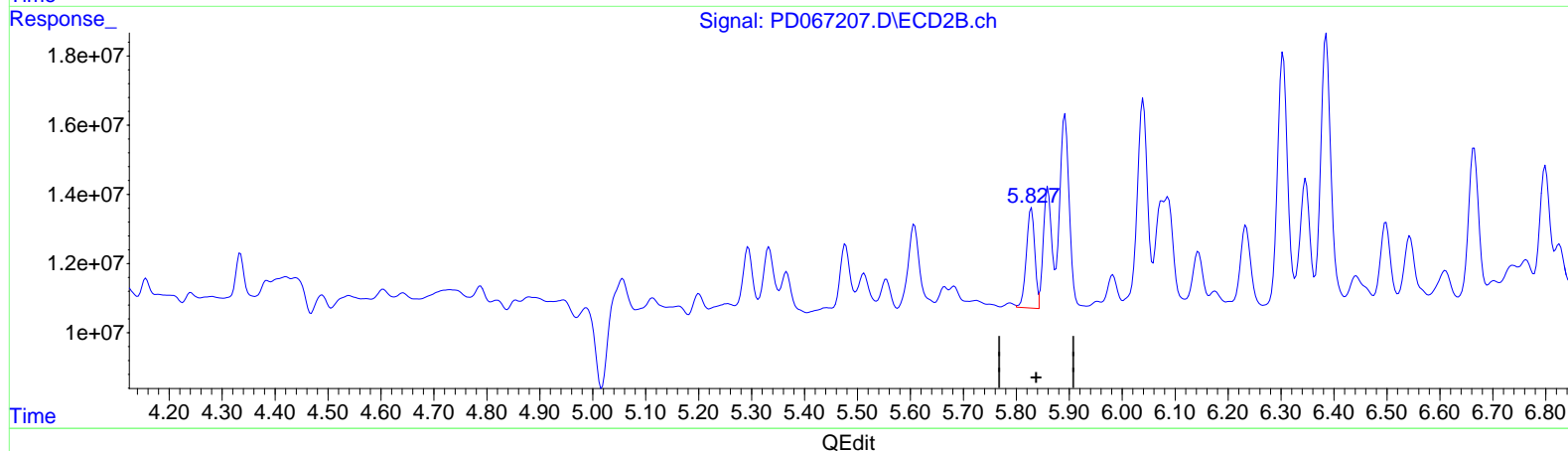
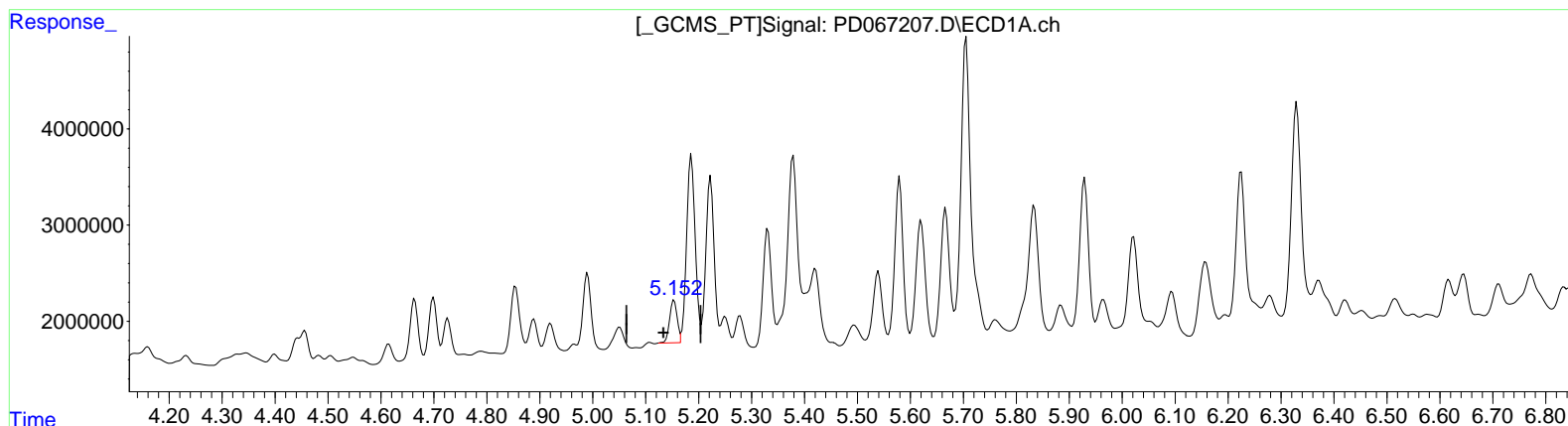
Manual IntegrationsAPPROVED

Reviewed By :Abdul Mirza 12/03/2021

Supervised By :mohammad ahmed 12/07/2021

Integration File signal 1: autoint1.e
 Integration File signal 2: autoint2.e
 Quant Time: Dec 03 04:55:40 2021
 Quant Method : Z:\pestpcbsrv\HPCHEM1\ECD_D\Method\PD112921CLP.M
 Quant Title : GC Extractables
 QLast Update : Tue Nov 30 05:28:01 2021
 Response via : Initial Calibration
 Integrator: ChemStation

Volume Inj. : 1 µl
 Signal #1 Phase : ZB-MR2 Signal #2 Phase: ZB-MR1
 Signal #1 Info : 30M x 0.32mm x0.2 Signal #2 Info : 30M x 0.32mm x 0.50µm



(8) Heptachlor epoxide (B)
 5.152min 1.655 ng/ml m
 response 4569509

(8) Heptachlor epoxide #2 (B)
 5.827min 4.656 ng/ml m
 response 32632626

Data Path : Z:\pestpcbsrv\HPCHEM1\ECD_D\Data\PD120321\
 Data File : PD067207.D
 Signal(s) : Signal #1: ECD1A.ch Signal #2: ECD2B.ch
 Acq On : 02 Dec 2021 13:49
 Operator : AR\AJ
 Sample : M4833-22
 Misc :
 ALS Vial : 23 Sample Multiplier: 1

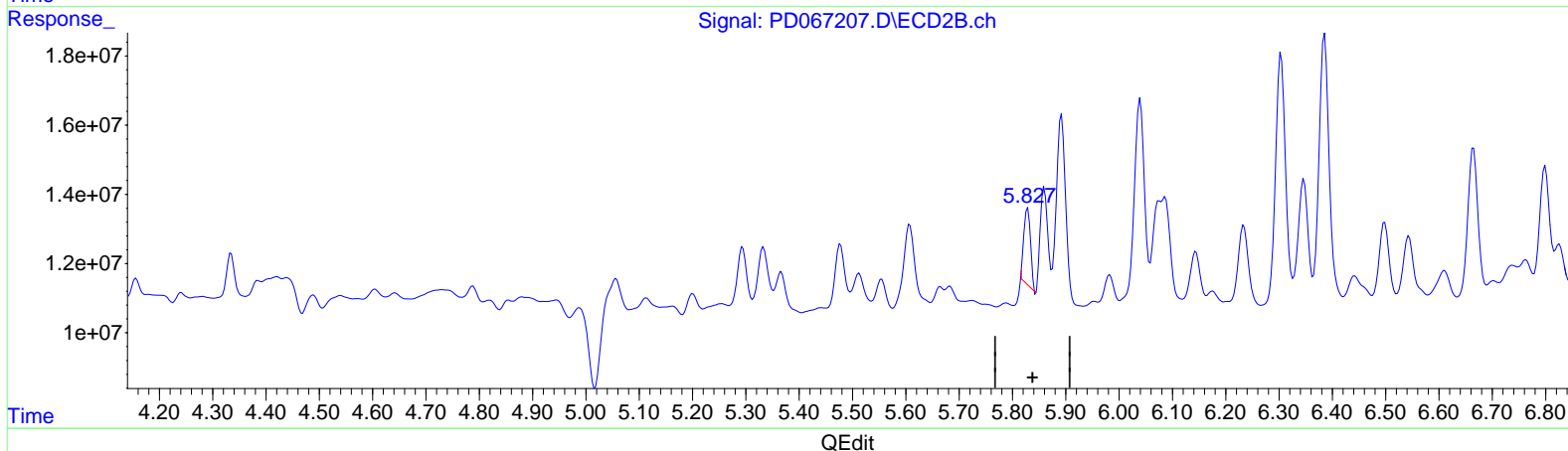
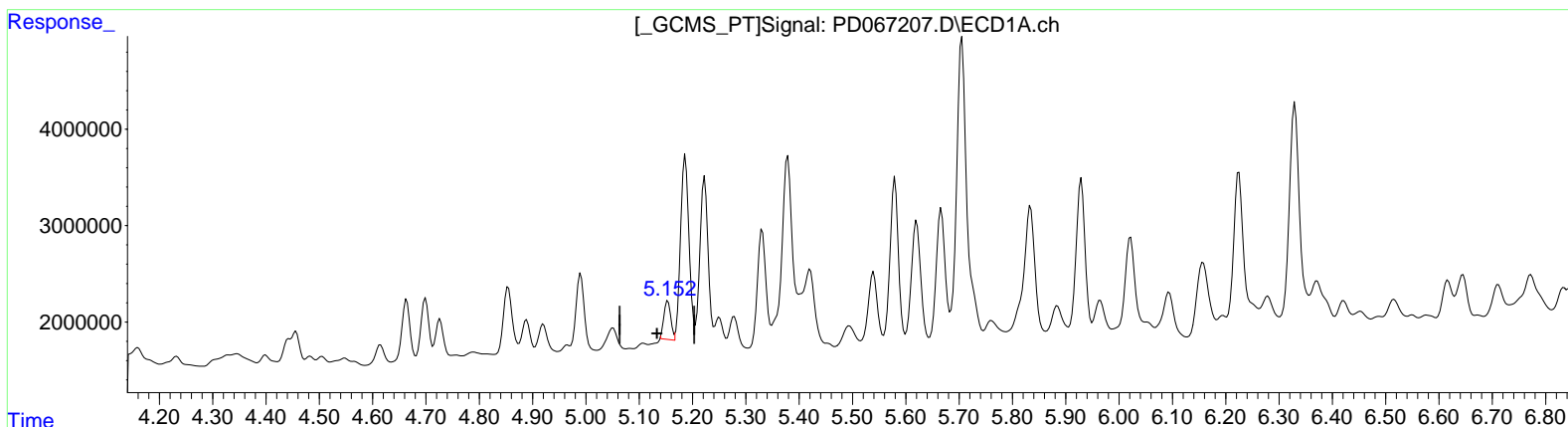
Instrument :
 ECD_D
 ClientSampleId :
 ESQN9

Manual Integrations APPROVED

Reviewed By : Abdul Mirza 12/03/2021
 Supervised By : mohammad ahmed 12/07/2021

Integration File signal 1: autoint1.e
 Integration File signal 2: autoint2.e
 Quant Time: Dec 07 02:09:50 2021
 Quant Method : Z:\pestpcbsrv\HPCHEM1\ECD_D\Method\PD112921CLP.M
 Quant Title : GC Extractables
 QLast Update : Tue Nov 30 05:28:01 2021
 Response via : Initial Calibration
 Integrator: ChemStation

Volume Inj. : 1 µl
 Signal #1 Phase : ZB-MR2 Signal #2 Phase: ZB-MR1
 Signal #1 Info : 30M x 0.32mm x 0.2 Signal #2 Info : 30M x 0.32mm x 0.50µm



(8) Heptachlor epoxide (B)
 5.154min 1.315 ng/ml
 response 3632294

(8) Heptachlor epoxide #2 (B)
 5.829min 2.761 ng/ml
 response 19353009

Quantitation Report (QT Reviewed)

Data Path : Z:\pestpcbsrv\HPCHEM1\ECD_D\Data\PD120321\
 Data File : PD067207.D
 Signal(s) : Signal #1: ECD1A.ch Signal #2: ECD2B.ch
 Acq On : 02 Dec 2021 13:49
 Operator : AR\AJ
 Sample : M4833-22
 Misc :
 ALS Vial : 23 Sample Multiplier: 1

Instrument :
 ECD_D
 Client Sampled :
 ESQN9

Manual Integrations APPROVED

Reviewed By : Abdul Mirza 12/03/2021
 Supervised By : mohammad ahmed 12/07/2021

Integration File signal 1: autoint1.e
 Integration File signal 2: autoint2.e
 Quant Time: Dec 03 04:55:40 2021
 Quant Method : Z:\pestpcbsrv\HPCHEM1\ECD_D\Method\PD112921CLP.M
 Quant Title : GC Extractables
 QLast Update : Tue Nov 30 05:28:01 2021
 Response via : Initial Calibration
 Integrator: ChemStation

Volume Inj. : 1 µl
 Signal #1 Phase : ZB-MR2 Signal #2 Phase: ZB-MR1
 Signal #1 Info : 30M x 0.32mm x0.2 Signal #2 Info : 30M x 0.32mm x 0.50µm

Compound	RT#1	RT#2	Resp#1	Resp#2	ng/ml	ng/ml
System Monitoring Compounds						
1) SA Tetrachlo...	3.437	3.967	28188917	102.2E6	12.910	12.755
27) SA Decachlor...	8.163	9.024	17848000	89706244	15.720	17.691
Target Compounds						
7) B delta-BHC	4.613	5.055	2526314	23989457	0.883m	2.710m#
8) B Heptachlo...	5.152	5.827	4569509	32632626	1.655m	4.656m#
10) B trans-Chl...	5.377	6.074	27465406	31305708	9.748m	4.125m#
11) B cis-Chlor...	5.419	6.144	10929225	17234029	3.939m	2.330 #
12) B 4,4'-DDE	5.578	6.304	17175704	91557714	6.863m	13.664 #
13) MA Dieldrin	5.704	6.441	40964051	8455957	14.226m	1.136m#
14) MA Endrin	5.963	6.665	3519970	53027383	1.539m	9.140 #
16) A 4,4'-DDD	6.094	6.798	5040325	38814347	2.384	6.637m#
17) MA 4,4'-DDT	6.330	7.094	25227047	21990657	11.867	3.816m#
18) B Endrin al...	6.421	7.006	1478356	8037688	0.896	1.705m#
20) A Methoxychlor	6.859	7.545	14157913	3380226	14.247m	1.214m#

Handwritten notes: A box around the target compounds data with a signature and the number 12/3/21.

(f)=RT Delta > 1/2 Window (#)=Amounts differ by > 25% (m)=manual int.