

Data Path : Z:\pestpcbsrv\HPCHEM1\ECD_D\Data\PD120418\
 Data File : PD050660.D
 Signal(s) : Signal #1: ECD1A.CH Signal #2: ECD2B.CH
 Acq On : 04 Dec 2018 18:32
 Operator : AJ\SJ
 Sample : J6203-07
 Misc :
 ALS Vial : 57 Sample Multiplier: 1

Instrument :
 ECD_D
 ClientSampleId :

Integration File signal 1: autoint1.e
 Integration File signal 2: autoint2.e
 Quant Time: Dec 05 03:01:38 2018
 Quant Method : Z:\pestpcbsrv\HPCHEM1\ECD_D\Method\PD120318CLP.M
 Quant Title : GC Extractables
 QLast Update : Tue Dec 04 00:43:01 2018
 Response via : Initial Calibration
 Integrator: ChemStation 6890 Scale Mode: Large solvent peaks clipped

Volume Inj. : 1 µl
 Signal #1 Phase : ZB-MR2 Signal #2 Phase: ZB-MR1
 Signal #1 Info : 30M x 0.32mm x0.2 Signal #2 Info : 30M x 0.32mm x 0.50µm

Compound	RT#1	RT#2	Resp#1	Resp#2	ng/ml	ng/ml
----------	------	------	--------	--------	-------	-------

System Monitoring Compounds

Target Compounds

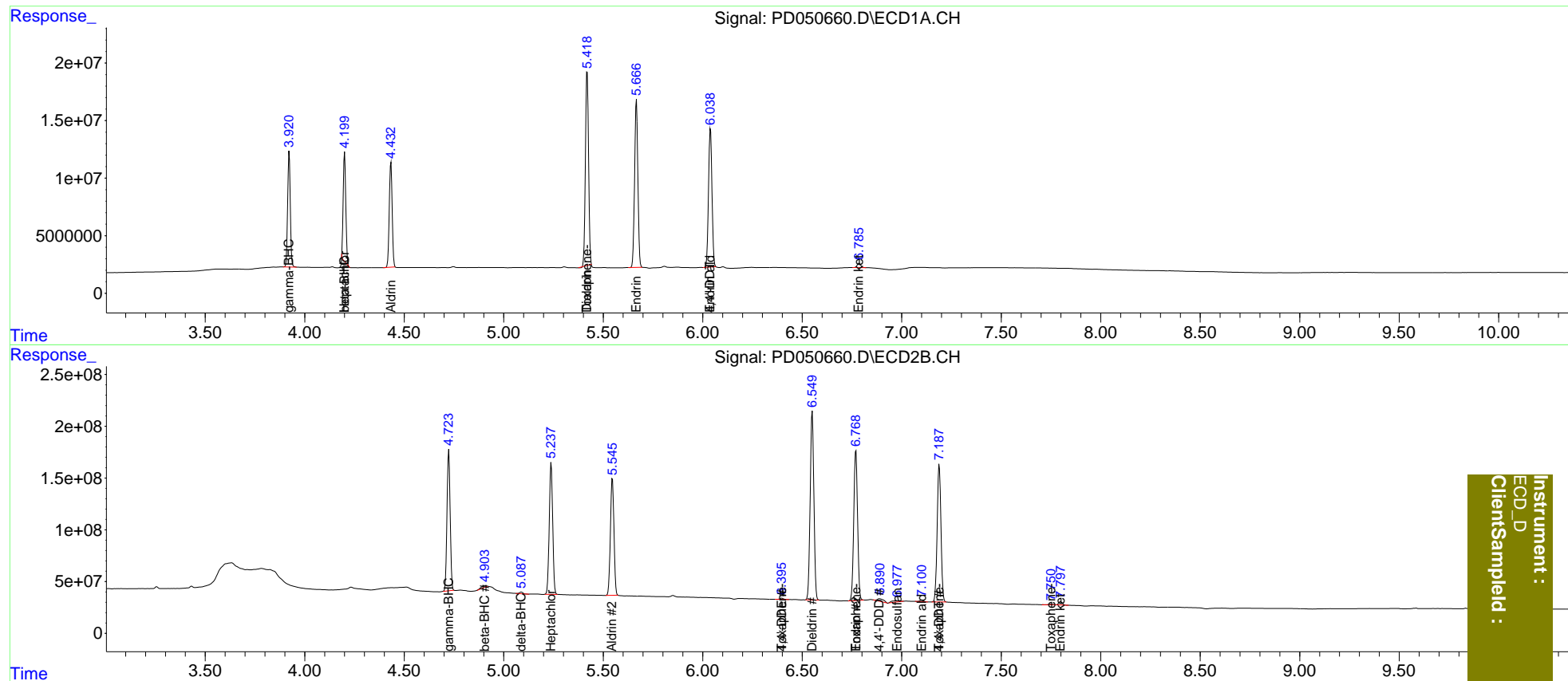
2) A	alpha-BHC	0.000	4.439	0	3282280	N.D.	<MDL
3) MA	gamma-BHC...	3.922	4.724	93251003	1486.4E6	40.037	37.615
4) MA	Heptachlor	4.201	5.239	85579783	1528.2E6	36.179	37.874
5) MB	Aldrin	4.433	5.546	92807963	1409.1E6	43.413	40.101
6) B	beta-BHC	4.201f	4.905	85579783	36440220	93.299	2.264 #
7) B	delta-BHC	0.000	5.088	0	16671334	N.D.	0.418
12) B	4,4'-DDE	0.000	6.397	0	14635759	N.D.	0.503
13) MA	Dieldrin	5.420	6.551	184.9E6	2361.7E6	79.949	75.015
14) MA	Endrin	5.667	6.770	166.7E6	1918.3E6	84.683	80.877
15) B	Endosulfa...	0.000	6.977	0	38978942	N.D.	1.550
16) A	4,4'-DDD	0.000	6.889	0	55242878	N.D.	2.271
17) MA	4,4'-DDT	6.039	7.189	144.9E6	1759.3E6	78.956	76.008
18) B	Endrin al...	6.039f	7.101	144.9E6	18444780	98.807	0.927 #
21) B	Endrin ke...	6.786	7.799	4780190	37522241	2.438	1.648 #
22)	Toxaphene-1	5.420	6.397	184.9E6	14635759	15671.544	101.442 #
23)	Toxaphene-2	0.000	6.770	0	1918.3E6	N.D.	11483.247
24)	Toxaphene-3	0.000	7.189	0	1759.3E6	N.D.	7348.963
26)	Toxaphene-5	0.000	7.751	0	2831042	N.D.	8.431

(f)=RT Delta > 1/2 Window (#)=Amounts differ by > 25% (m)=manual int.

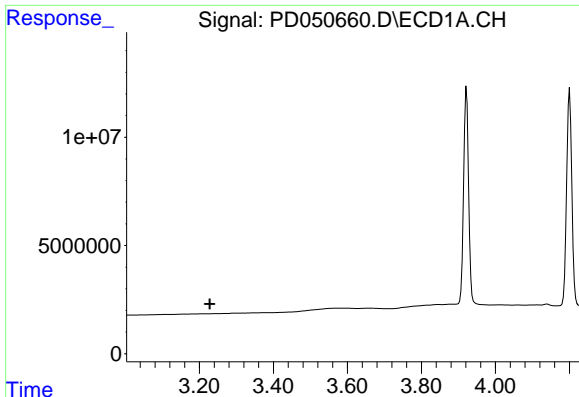
Data Path : Z:\pestpcbsrv\HPCHEM1\ECD_D\Data\PD120418\
 Data File : PD050660.D
 Signal(s) : Signal #1: ECD1A.CH Signal #2: ECD2B.CH
 Acq On : 04 Dec 2018 18:32
 Operator : AJ\SJ
 Sample : J6203-07
 Misc :
 ALS Vial : 57 Sample Multiplier: 1

Integration File signal 1: autoint1.e
 Integration File signal 2: autoint2.e
 Quant Time: Dec 05 03:01:38 2018
 Quant Method : Z:\pestpcbsrv\HPCHEM1\ECD_D\Method\PD120318CLP.M
 Quant Title : GC Extractables
 QLast Update : Tue Dec 04 00:43:01 2018
 Response via : Initial Calibration
 Integrator: ChemStation 6890 Scale Mode: Large solvent peaks clipped

Volume Inj. : 1 µl
 Signal #1 Phase : ZB-MR2 Signal #2 Phase: ZB-MR1
 Signal #1 Info : 30M x 0.32mm x0.2 Signal #2 Info : 30M x 0.32mm x 0.50µm



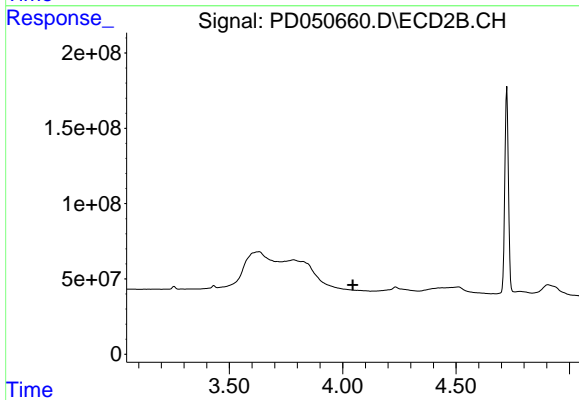
Instrument :
 ECD_D
 ClientSampleId :



#1 Tetrachloro-m-xylene

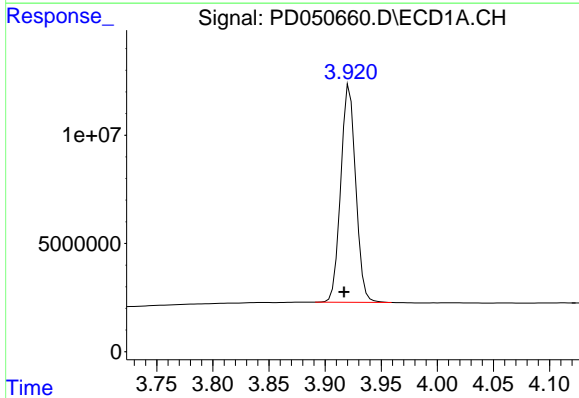
R.T.: 0.000 min
 Exp R.T. : 3.228 min
 Response: 0
 Conc: N.D.

Instrument :
 ECD_D
 ClientSampled :



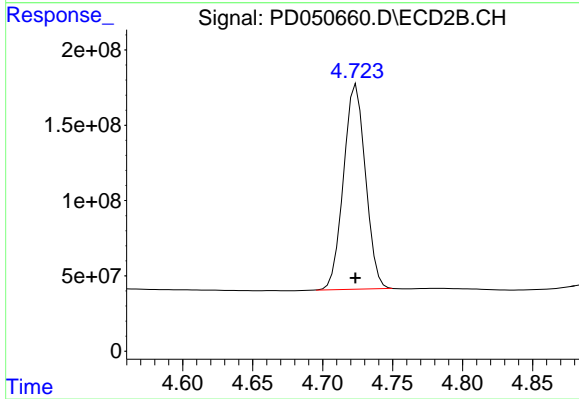
#1 Tetrachloro-m-xylene

R.T.: 0.000 min
 Exp R.T. : 4.044 min
 Response: 0
 Conc: N.D.



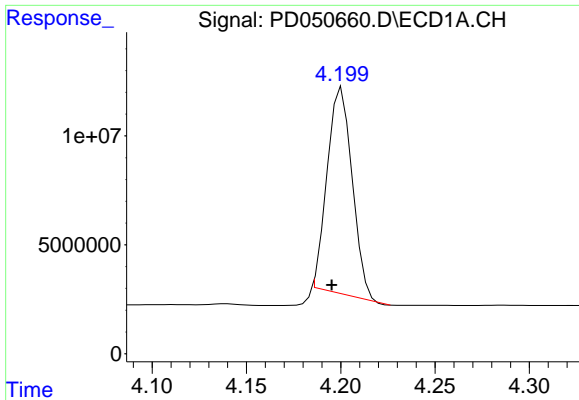
#3 gamma-BHC (Lindane)

R.T.: 3.922 min
 Delta R.T.: 0.005 min
 Response: 93251003
 Conc: 40.04 ng/ml



#3 gamma-BHC (Lindane)

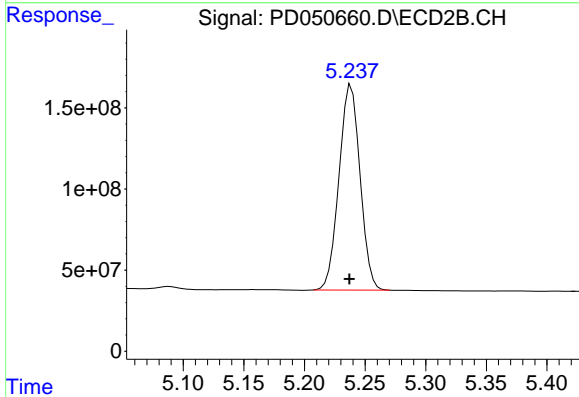
R.T.: 4.724 min
 Delta R.T.: 0.000 min
 Response: 1486388635
 Conc: 37.61 ng/ml



#4 Heptachlor

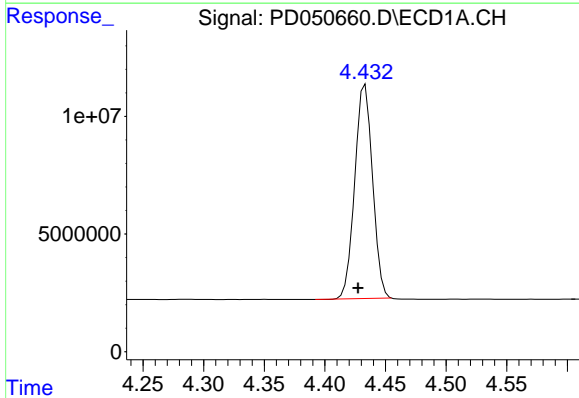
R.T.: 4.201 min
 Delta R.T.: 0.005 min
 Response: 85579783
 Conc: 36.18 ng/ml

Instrument :
 ECD_D
 ClientSampled :



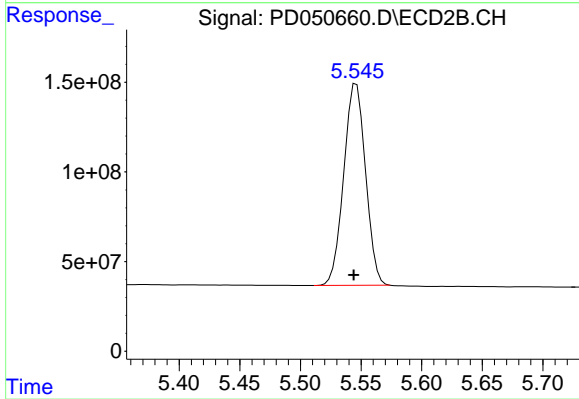
#4 Heptachlor

R.T.: 5.239 min
 Delta R.T.: 0.001 min
 Response: 1528225855
 Conc: 37.87 ng/ml



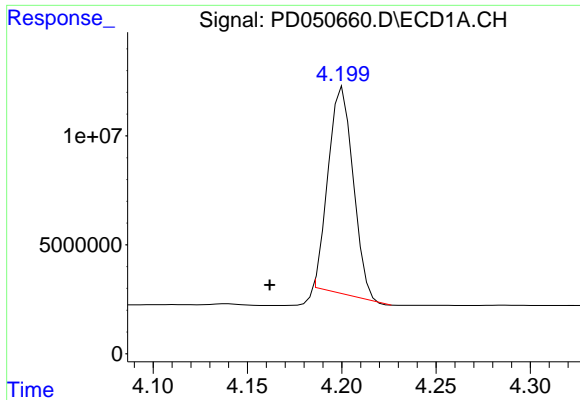
#5 Aldrin

R.T.: 4.433 min
 Delta R.T.: 0.006 min
 Response: 92807963
 Conc: 43.41 ng/ml



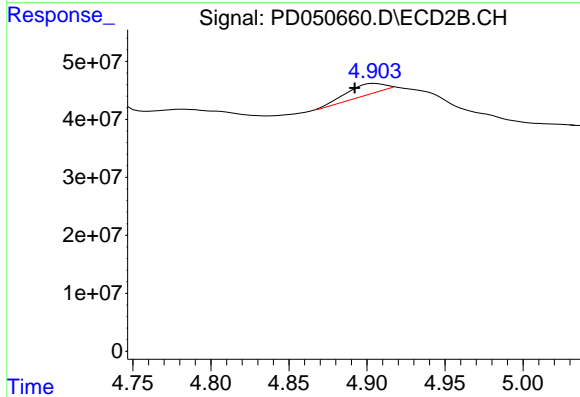
#5 Aldrin

R.T.: 5.546 min
 Delta R.T.: 0.002 min
 Response: 1409055124
 Conc: 40.10 ng/ml

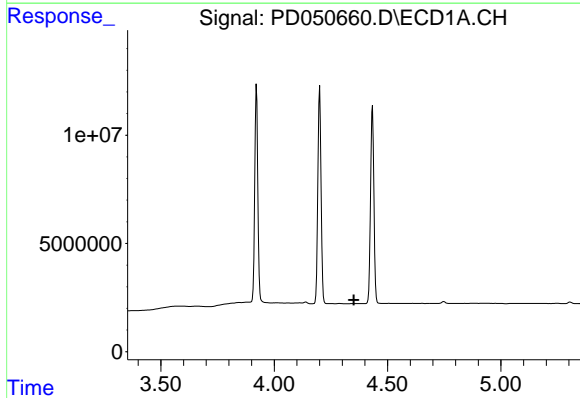


#6 beta-BHC
 R.T.: 4.201 min
 Delta R.T.: 0.039 min
 Response: 85579783
 Conc: 93.30 ng/ml

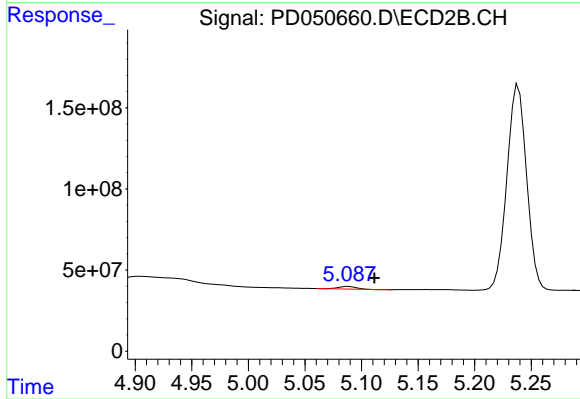
Instrument :
 ECD_D
 ClientSampleId :



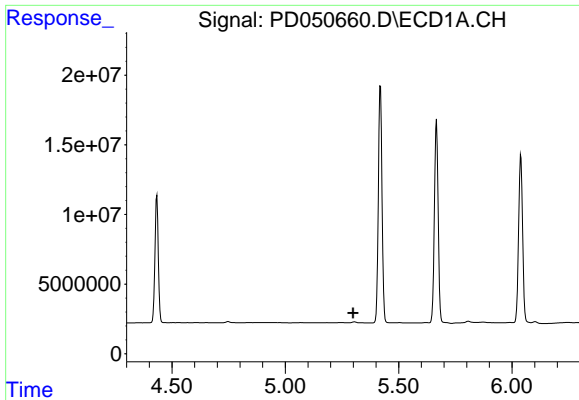
#6 beta-BHC
 R.T.: 4.905 min
 Delta R.T.: 0.013 min
 Response: 36440220
 Conc: 2.26 ng/ml



#7 delta-BHC
 R.T.: 0.000 min
 Exp R.T. : 4.351 min
 Response: 0
 Conc: N.D.

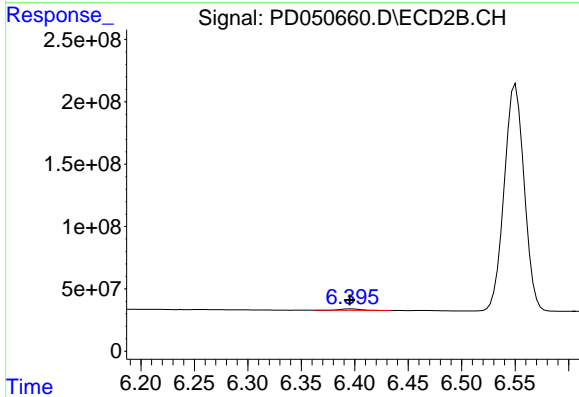


#7 delta-BHC
 R.T.: 5.088 min
 Delta R.T.: -0.023 min
 Response: 16671334
 Conc: 0.42 ng/ml

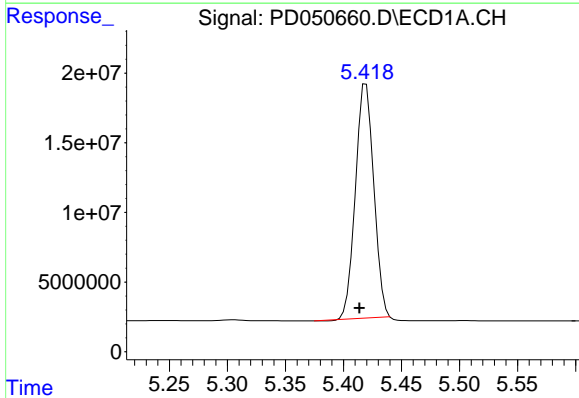


#12 4,4'-DDE
 R.T.: 0.000 min
 Exp R.T.: 5.300 min
 Response: 0
 Conc: N.D.

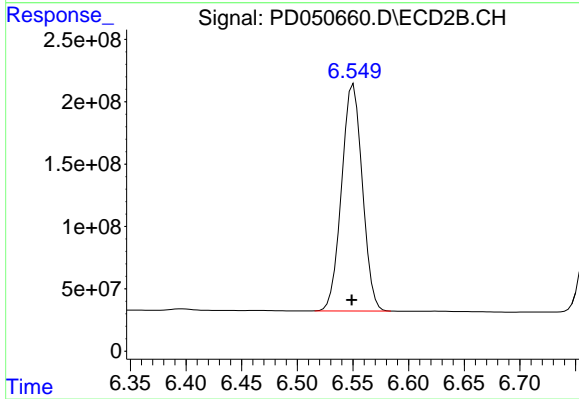
Instrument :
 ECD_D
 ClientSampled :



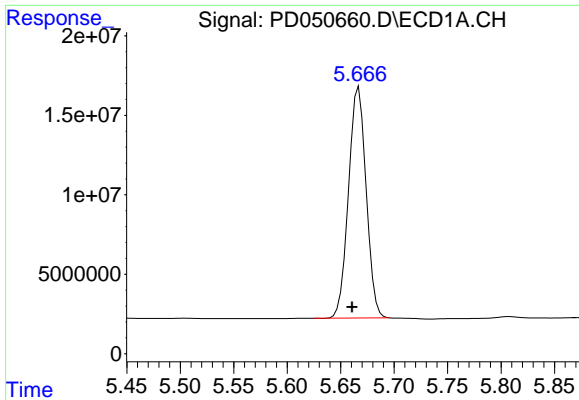
#12 4,4'-DDE
 R.T.: 6.397 min
 Delta R.T.: 0.001 min
 Response: 14635759
 Conc: 0.50 ng/ml



#13 Dieldrin
 R.T.: 5.420 min
 Delta R.T.: 0.006 min
 Response: 184850195
 Conc: 79.95 ng/ml

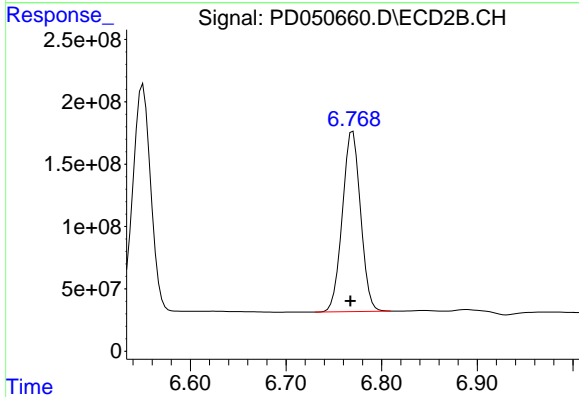


#13 Dieldrin
 R.T.: 6.551 min
 Delta R.T.: 0.002 min
 Response: 2361714126
 Conc: 75.01 ng/ml

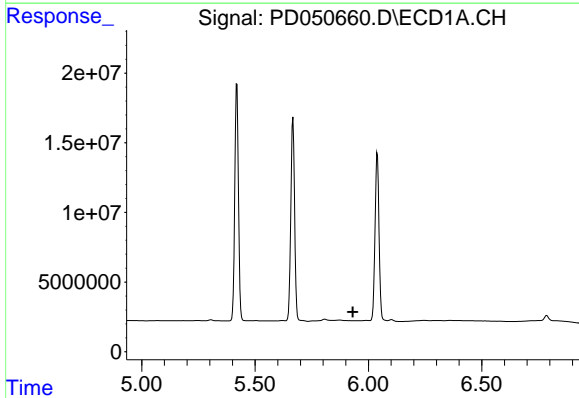


#14 Endrin
 R.T.: 5.667 min
 Delta R.T.: 0.006 min
 Response: 166733967
 Conc: 84.68 ng/ml

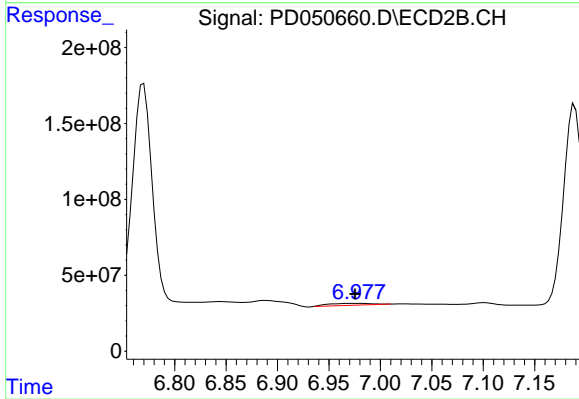
Instrument :
 ECD_D
 ClientSampled :



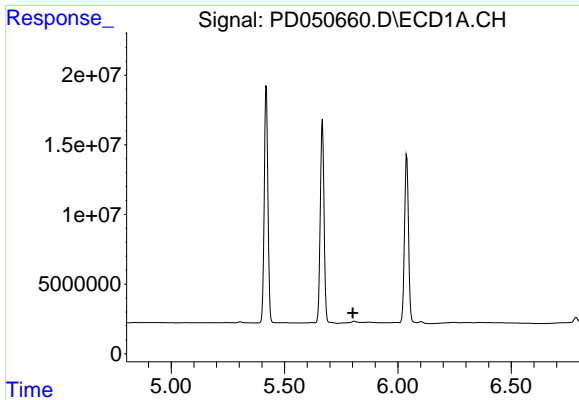
#14 Endrin
 R.T.: 6.770 min
 Delta R.T.: 0.002 min
 Response: 1918272853
 Conc: 80.88 ng/ml



#15 Endosulfan II
 R.T.: 0.000 min
 Exp R.T. : 5.931 min
 Response: 0
 Conc: N.D.



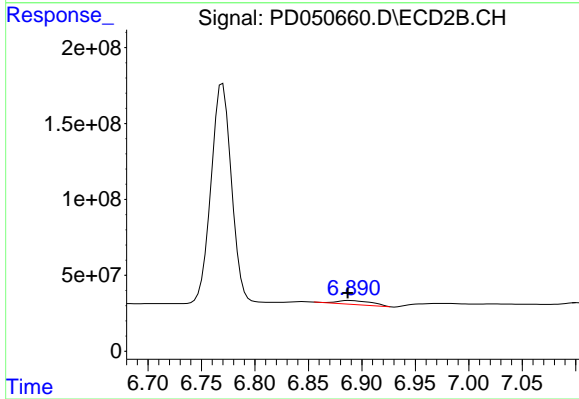
#15 Endosulfan II
 R.T.: 6.977 min
 Delta R.T.: 0.002 min
 Response: 38978942
 Conc: 1.55 ng/ml



#16 4,4'-DDD

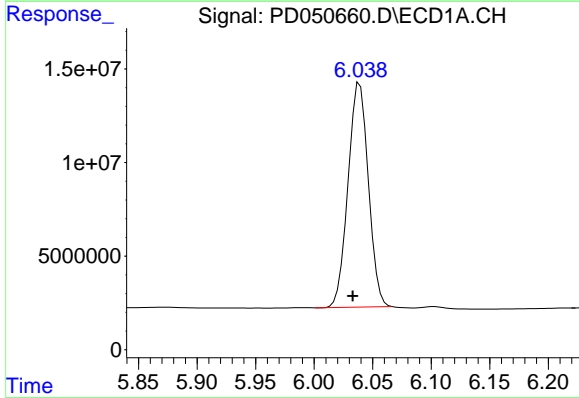
R.T.: 0.000 min
 Exp R.T.: 5.801 min
 Response: 0
 Conc: N.D.

Instrument :
 ECD_D
 ClientSampled :



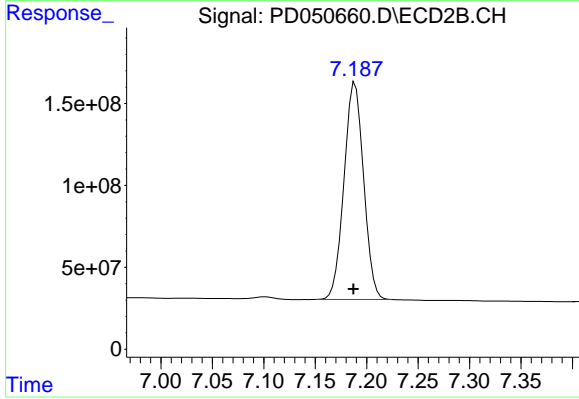
#16 4,4'-DDD

R.T.: 6.889 min
 Delta R.T.: 0.002 min
 Response: 55242878
 Conc: 2.27 ng/ml



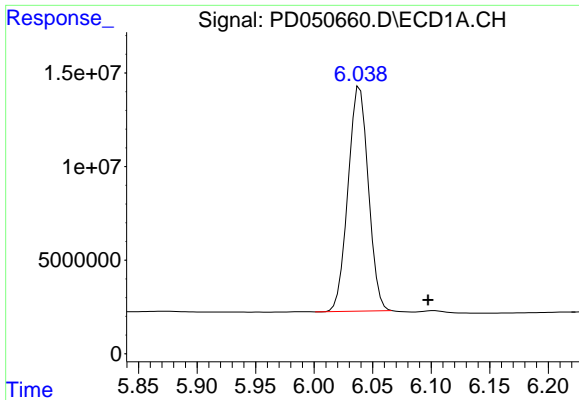
#17 4,4'-DDT

R.T.: 6.039 min
 Delta R.T.: 0.006 min
 Response: 144899337
 Conc: 78.96 ng/ml



#17 4,4'-DDT

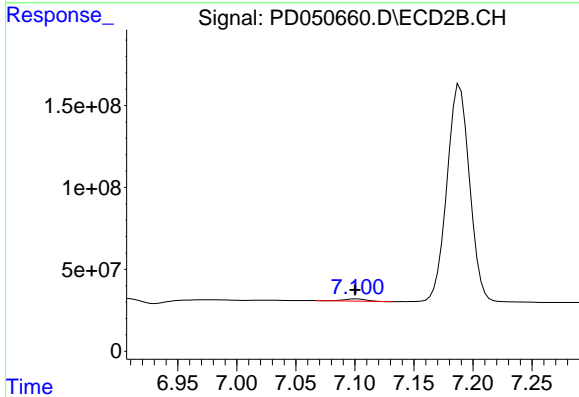
R.T.: 7.189 min
 Delta R.T.: 0.002 min
 Response: 1759332625
 Conc: 76.01 ng/ml



#18 Endrin aldehyde

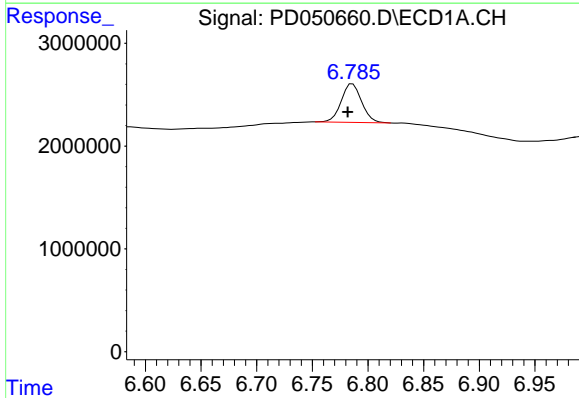
R.T.: 6.039 min
 Delta R.T.: -0.058 min
 Response: 144899337
 Conc: 98.81 ng/ml

Instrument :
 ECD_D
 ClientSampled :



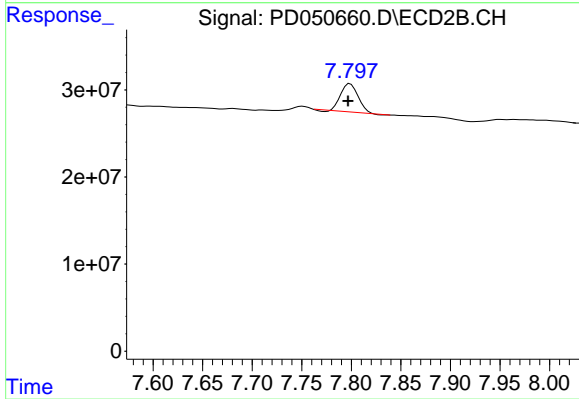
#18 Endrin aldehyde

R.T.: 7.101 min
 Delta R.T.: 0.000 min
 Response: 18444780
 Conc: 0.93 ng/ml



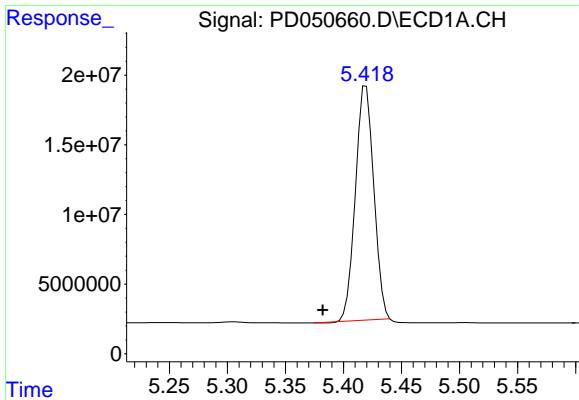
#21 Endrin ketone

R.T.: 6.786 min
 Delta R.T.: 0.005 min
 Response: 4780190
 Conc: 2.44 ng/ml



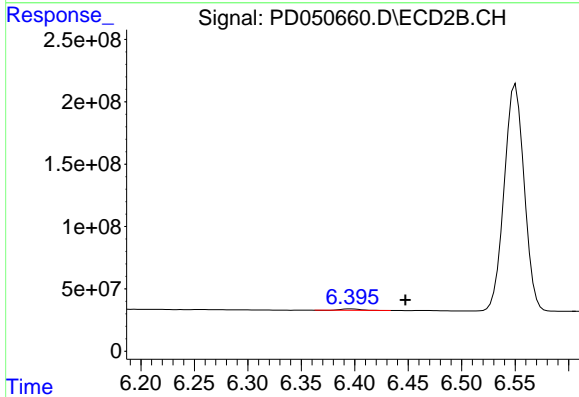
#21 Endrin ketone

R.T.: 7.799 min
 Delta R.T.: 0.002 min
 Response: 37522241
 Conc: 1.65 ng/ml

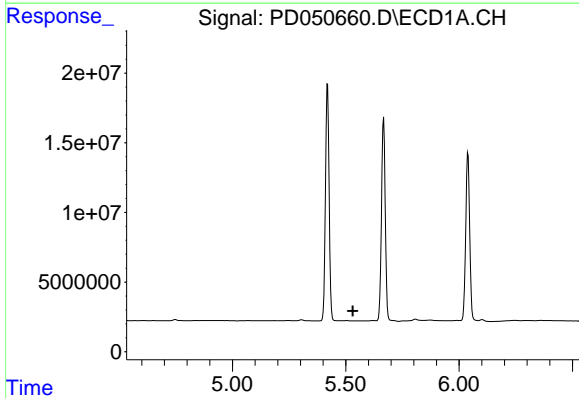


#22 Toxaphene-1
 R.T.: 5.420 min
 Delta R.T.: 0.038 min
 Response: 184850195
 Conc: 15671.54 ng/ml

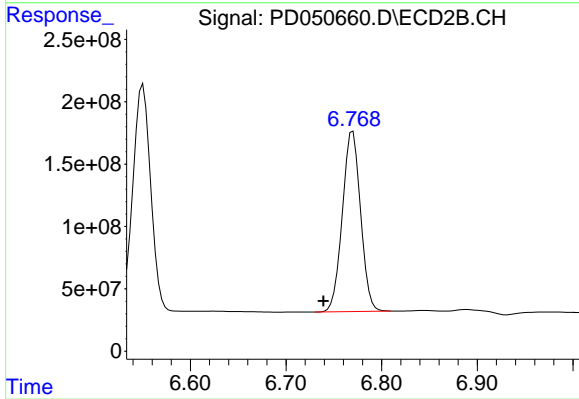
Instrument :
 ECD_D
 ClientSampleId :



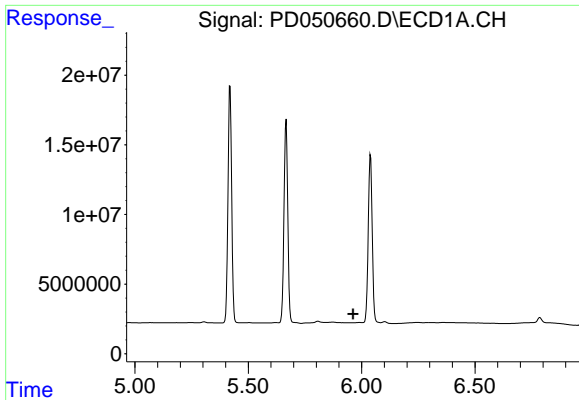
#22 Toxaphene-1
 R.T.: 6.397 min
 Delta R.T.: -0.051 min
 Response: 14635759
 Conc: 101.44 ng/ml



#23 Toxaphene-2
 R.T.: 0.000 min
 Exp R.T. : 5.531 min
 Response: 0
 Conc: N.D.



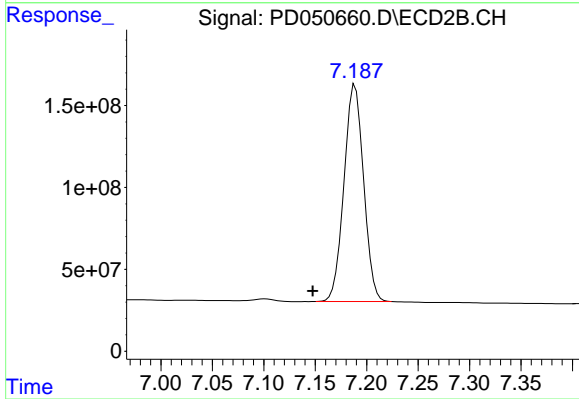
#23 Toxaphene-2
 R.T.: 6.770 min
 Delta R.T.: 0.031 min
 Response: 1918272853
 Conc: 11483.25 ng/ml



#24 Toxaphene-3

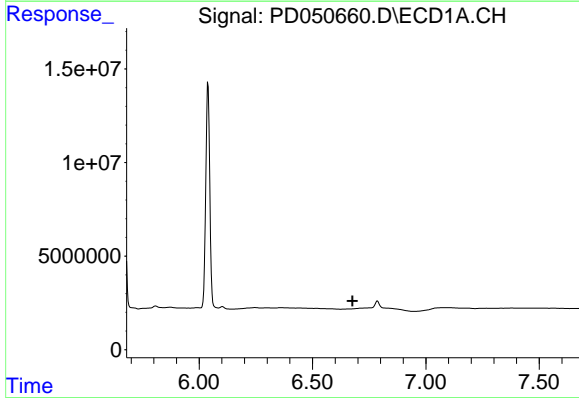
R.T.: 0.000 min
 Exp R.T. : 5.963 min
 Response: 0
 Conc: N.D.

Instrument :
 ECD_D
 ClientSampled :



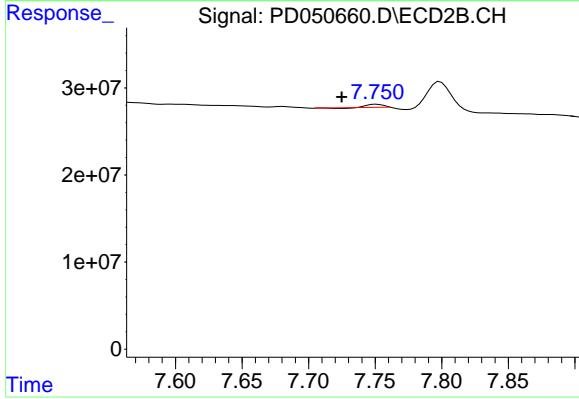
#24 Toxaphene-3

R.T.: 7.189 min
 Delta R.T.: 0.041 min
 Response: 1759332625
 Conc: 7348.96 ng/ml



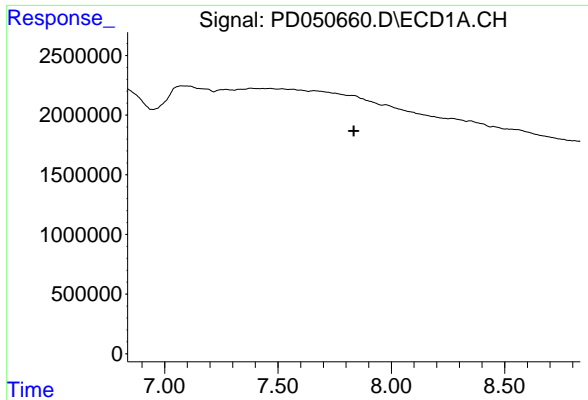
#26 Toxaphene-5

R.T.: 0.000 min
 Exp R.T. : 6.677 min
 Response: 0
 Conc: N.D.



#26 Toxaphene-5

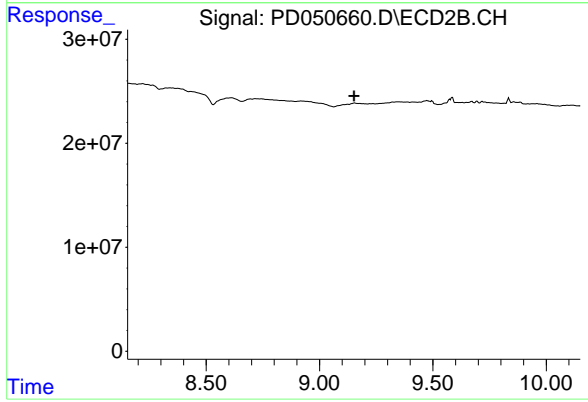
R.T.: 7.751 min
 Delta R.T.: 0.026 min
 Response: 2831042
 Conc: 8.43 ng/ml



#27 Decachlorobiphenyl

R.T.: 0.000 min
Exp R.T. : 7.834 min
Response: 0
Conc: N.D.

Instrument :
ECD_D
ClientSampleId :



#27 Decachlorobiphenyl

R.T.: 0.000 min
Exp R.T. : 9.153 min
Response: 0
Conc: N.D.