

Data Path : Z:\pestpcbsrv\HPCHEM1\ECD\_D\Data\PD120518\  
 Data File : PD050667.D  
 Signal(s) : Signal #1: ECD1A.CH Signal #2: ECD2B.CH  
 Acq On : 05 Dec 2018 13:39  
 Operator : AJ\SJ  
 Sample : PIBLK16  
 Misc :  
 ALS Vial : 2 Sample Multiplier: 1

Instrument :  
 ECD\_D  
 ClientSampleID :  
 PIBLK16

Integration File signal 1: autoint1.e  
 Integration File signal 2: autoint2.e  
 Quant Time: Dec 05 14:43:17 2018  
 Quant Method : Z:\pestpcbsrv\HPCHEM1\ECD\_D\Method\PD120318CLP.M  
 Quant Title : GC Extractables  
 QLast Update : Tue Dec 04 00:43:01 2018  
 Response via : Initial Calibration  
 Integrator: ChemStation 6890 Scale Mode: Large solvent peaks clipped

Volume Inj. : 1 µl  
 Signal #1 Phase : ZB-MR2 Signal #2 Phase: ZB-MR1  
 Signal #1 Info : 30M x 0.32mm x 0.2 Signal #2 Info : 30M x 0.32mm x 0.50µm

Compound	RT#1	RT#2	Resp#1	Resp#2	ng/ml	ng/ml
-----						
System Monitoring Compounds						
1) SA Tetrachlo...	3.227	4.043	31797547	624.6E6	20.848	22.031
27) SA Decachlor...	7.835	9.151	66278663	864.6E6	40.291	39.950
Target Compounds						
6) B beta-BHC	0.000	4.940f	0	15382185	N.D.	0.956
7) B delta-BHC	0.000	5.086f	0	4385204	N.D.	0.110
12) B 4,4'-DDE	0.000	6.418	0	6809240	N.D.	0.234
14) MA Endrin	0.000	6.771	0	4466035	N.D.	0.188
22) Toxaphene-1	0.000	6.418	0	6809240	N.D.	47.195
23) Toxaphene-2	0.000	6.771	0	4466035	N.D.	26.735
-----						

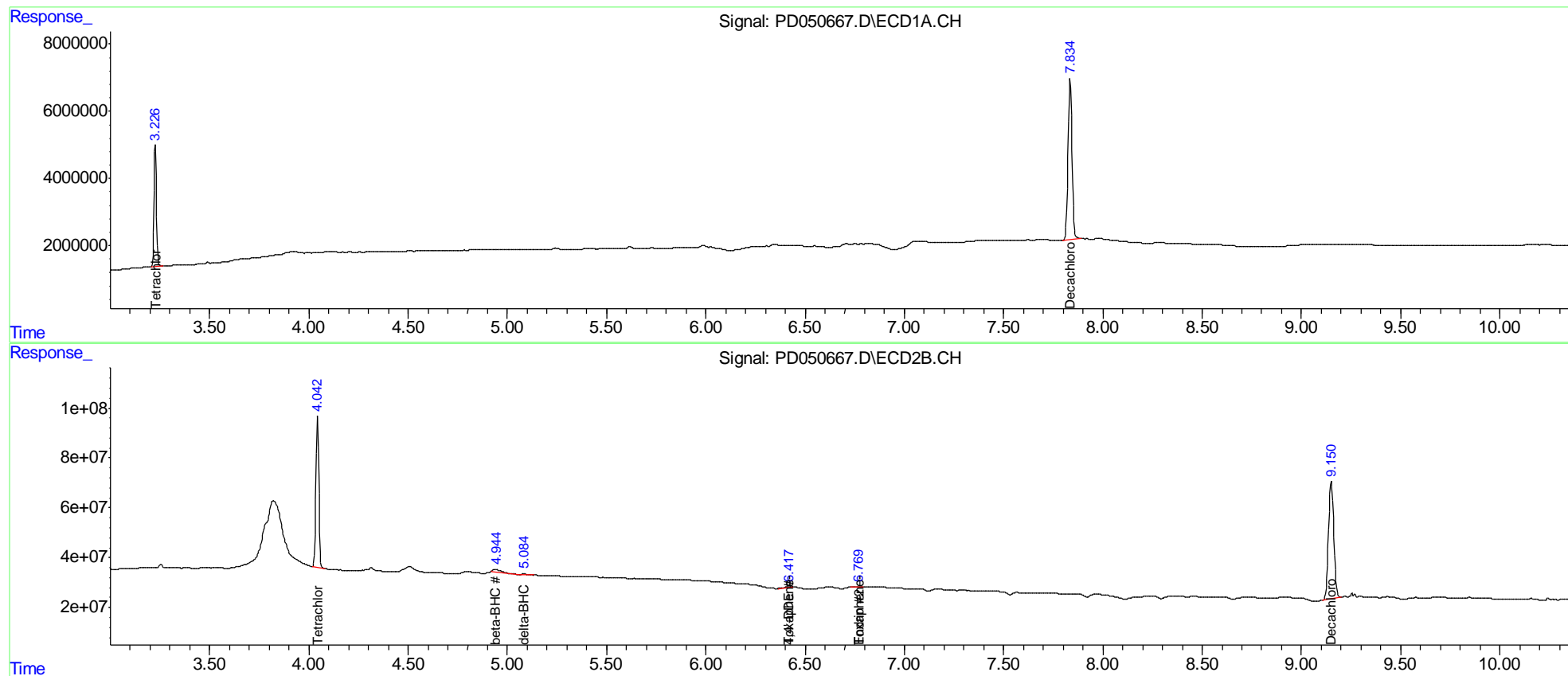
(f)=RT Delta > 1/2 Window (#)=Amounts differ by > 25% (m)=manual int.

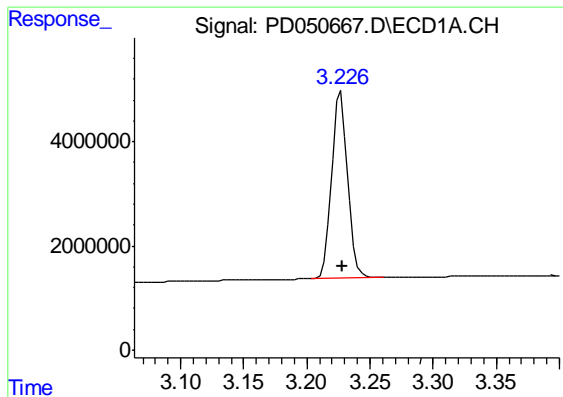
Data Path : Z:\pestpcbsrv\HPCHEM1\ECD\_D\Data\PD120518\  
 Data File : PD050667.D  
 Signal(s) : Signal #1: ECD1A.CH Signal #2: ECD2B.CH  
 Acq On : 05 Dec 2018 13:39  
 Operator : AJ\SJ  
 Sample : PIBLK16  
 Misc :  
 ALS Vial : 2 Sample Multiplier: 1

Instrument :  
 ECD\_D  
 ClientSampled :  
 PIBLK16

Integration File signal 1: autoint1.e  
 Integration File signal 2: autoint2.e  
 Quant Time: Dec 05 14:43:17 2018  
 Quant Method : Z:\pestpcbsrv\HPCHEM1\ECD\_D\Method\PD120318CLP.M  
 Quant Title : GC Extractables  
 QLast Update : Tue Dec 04 00:43:01 2018  
 Response via : Initial Calibration  
 Integrator: ChemStation 6890 Scale Mode: Large solvent peaks clipped

Volume Inj. : 1 µl  
 Signal #1 Phase : ZB-MR2 Signal #2 Phase: ZB-MR1  
 Signal #1 Info : 30M x 0.32mm x0.2 Signal #2 Info : 30M x 0.32mm x 0.50µm

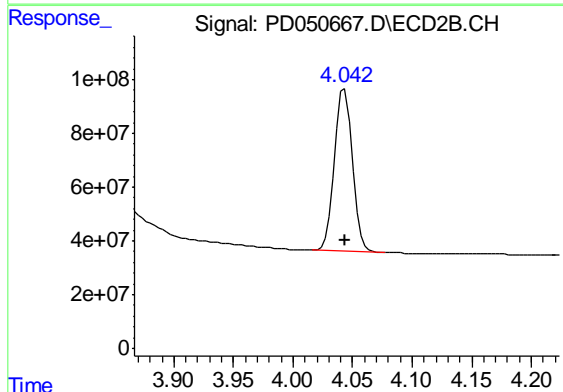




#1 Tetrachloro-m-xylene

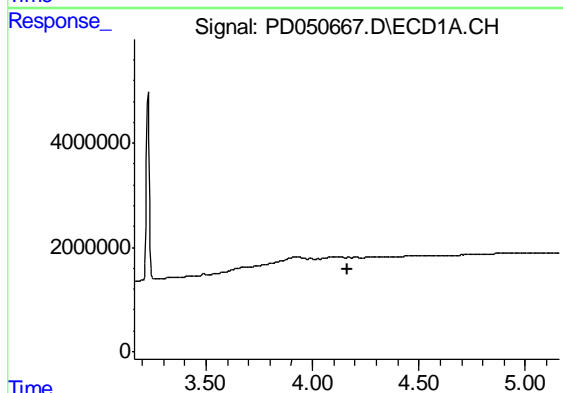
R.T.: 3.227 min  
 Delta R.T.: 0.000 min  
 Response: 31797547  
 Conc: 20.85 ng/ml

Instrument :  
 ECD\_D  
 ClientSampleId :  
 PIBLK16



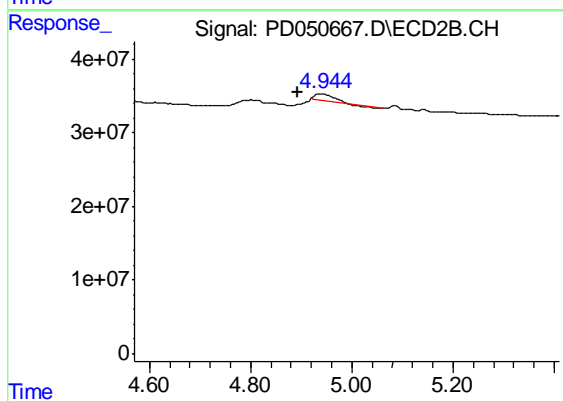
#1 Tetrachloro-m-xylene

R.T.: 4.043 min  
 Delta R.T.: 0.000 min  
 Response: 624627214  
 Conc: 22.03 ng/ml



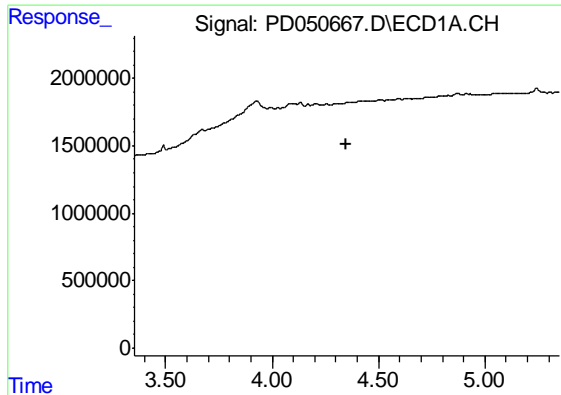
#6 beta-BHC

R.T.: 0.000 min  
 Exp R.T. : 4.162 min  
 Response: 0  
 Conc: N.D.



#6 beta-BHC

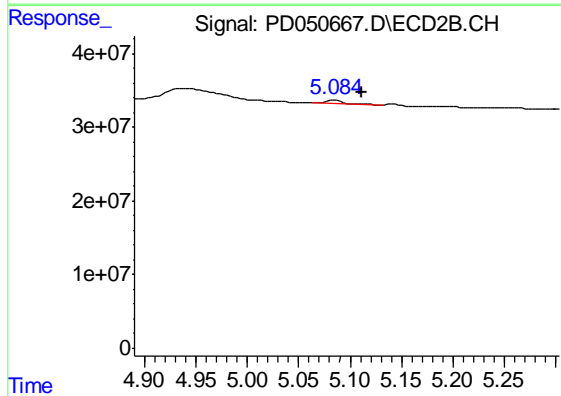
R.T.: 4.940 min  
 Delta R.T.: 0.048 min  
 Response: 15382185  
 Conc: 0.96 ng/ml



#7 delta-BHC

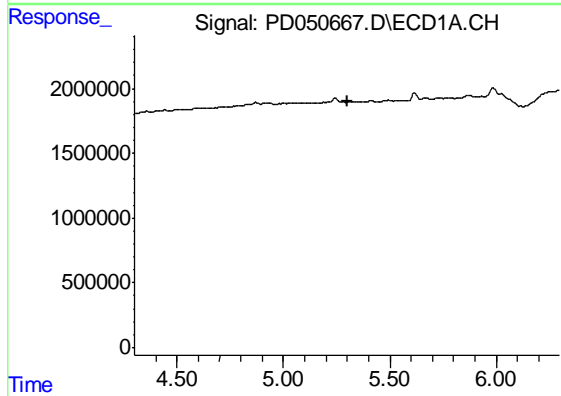
R.T.: 0.000 min  
 Exp R.T. : 4.351 min  
 Response: 0  
 Conc: N.D.

Instrument :  
 ECD\_D  
 ClientSampled :  
 PIBLK16



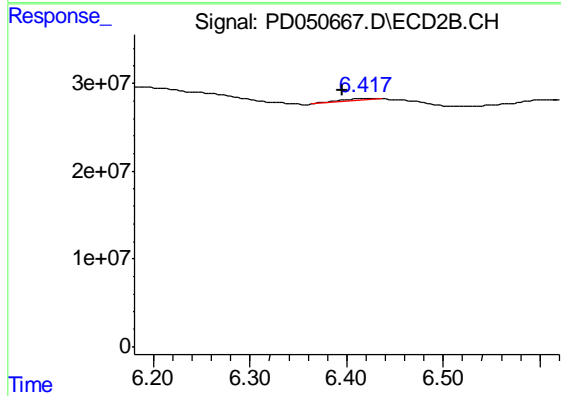
#7 delta-BHC

R.T.: 5.086 min  
 Delta R.T.: -0.026 min  
 Response: 4385204  
 Conc: 0.11 ng/ml



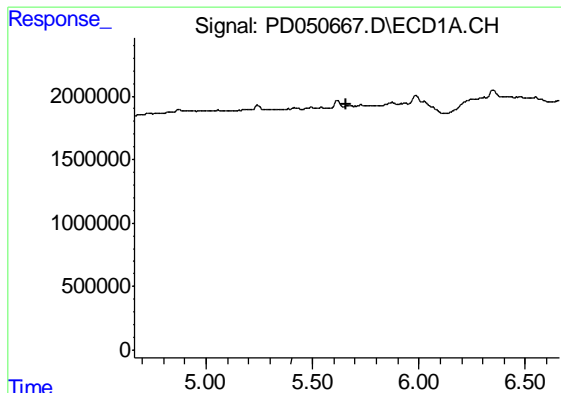
#12 4,4'-DDE

R.T.: 0.000 min  
 Exp R.T. : 5.300 min  
 Response: 0  
 Conc: N.D.



#12 4,4'-DDE

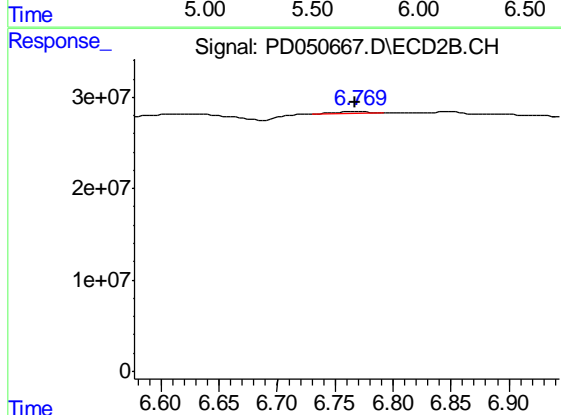
R.T.: 6.418 min  
 Delta R.T.: 0.023 min  
 Response: 6809240  
 Conc: 0.23 ng/ml



#14 Endrin

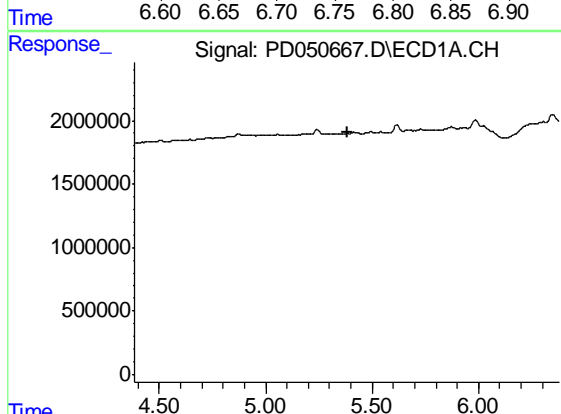
R.T.: 0.000 min  
 Exp R.T. : 5.661 min  
 Response: 0  
 Conc: N.D.

Instrument :  
 ECD\_D  
 ClientSampleId :  
 PIBLK16



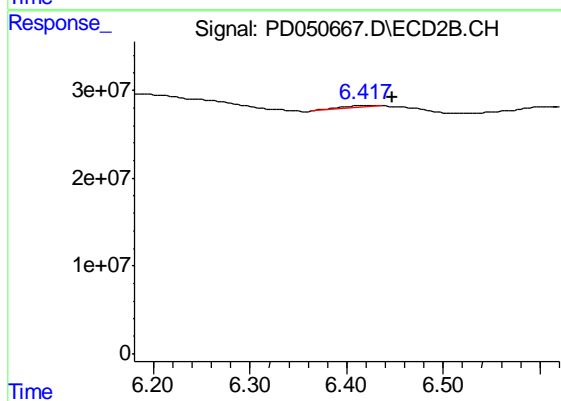
#14 Endrin

R.T.: 6.771 min  
 Delta R.T.: 0.003 min  
 Response: 4466035  
 Conc: 0.19 ng/ml



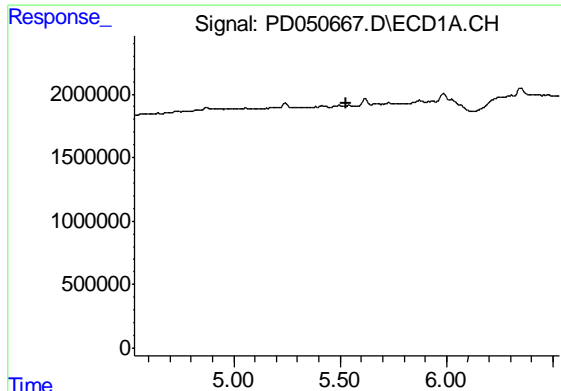
#22 Toxaphene-1

R.T.: 0.000 min  
 Exp R.T. : 5.382 min  
 Response: 0  
 Conc: N.D.



#22 Toxaphene-1

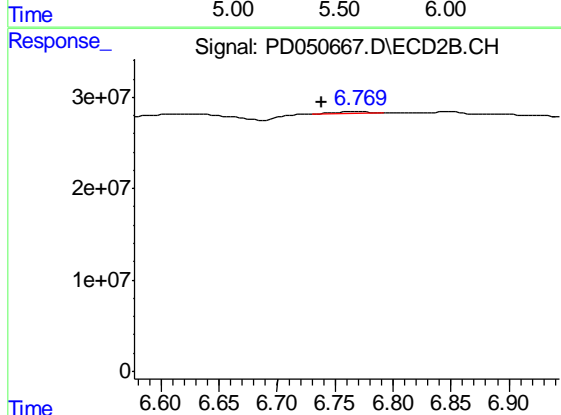
R.T.: 6.418 min  
 Delta R.T.: -0.029 min  
 Response: 6809240  
 Conc: 47.20 ng/ml



#23 Toxaphene-2

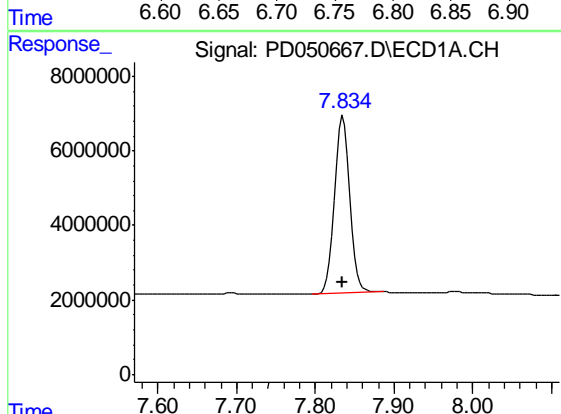
R.T.: 0.000 min  
 Exp R.T. : 5.531 min  
 Response: 0  
 Conc: N.D.

Instrument :  
 ECD\_D  
 ClientSampleId :  
 PIBLK16



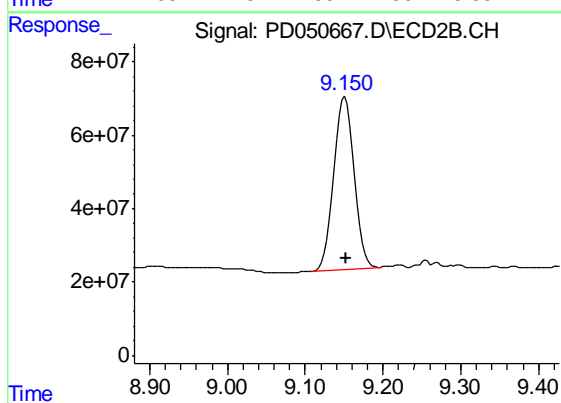
#23 Toxaphene-2

R.T.: 6.771 min  
 Delta R.T.: 0.032 min  
 Response: 4466035  
 Conc: 26.73 ng/ml



#27 Decachlorobiphenyl

R.T.: 7.835 min  
 Delta R.T.: 0.000 min  
 Response: 66278663  
 Conc: 40.29 ng/ml



#27 Decachlorobiphenyl

R.T.: 9.151 min  
 Delta R.T.: -0.002 min  
 Response: 864635210  
 Conc: 39.95 ng/ml