

Data Path : Z:\pestpcbsrv\HPCHEM1\ECD_D\Data\PD120520\
 Data File : PD060599.D
 Signal(s) : Signal #1: ECD1A.ch Signal #2: ECD2B.ch
 Acq On : 04 Dec 2020 09:58
 Operator : DD\AJ
 Sample : INDA333
 Misc :
 ALS Vial : 7 Sample Multiplier: 1

Instrument :
 ECD_D
 ClientSampleId :
 INDA3033

Integration File signal 1: autoint1.e
 Integration File signal 2: autoint2.e
 Quant Time: Dec 05 00:35:28 2020
 Quant Method : Z:\pestpcbsrv\HPCHEM1\ECD_D\Method\PD120420CLP.M
 Quant Title : GC Extractables
 QLast Update : Fri Dec 04 03:58:39 2020
 Response via : Initial Calibration
 Integrator: ChemStation

Volume Inj. : 1 µl
 Signal #1 Phase : ZB-MR2 Signal #2 Phase: ZB-MR1
 Signal #1 Info : 30M x 0.32mm x0.2 Signal #2 Info : 30M x 0.32mm x 0.50µm

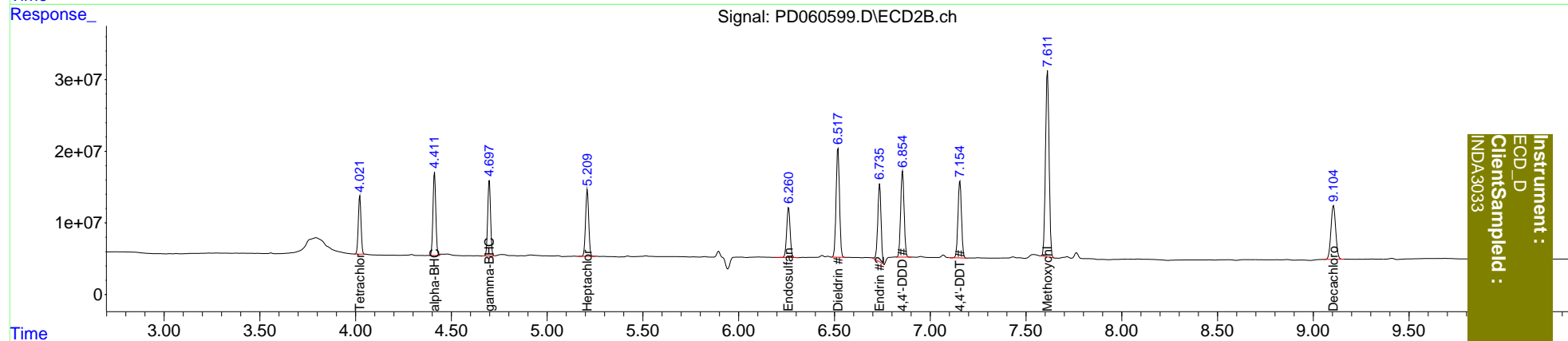
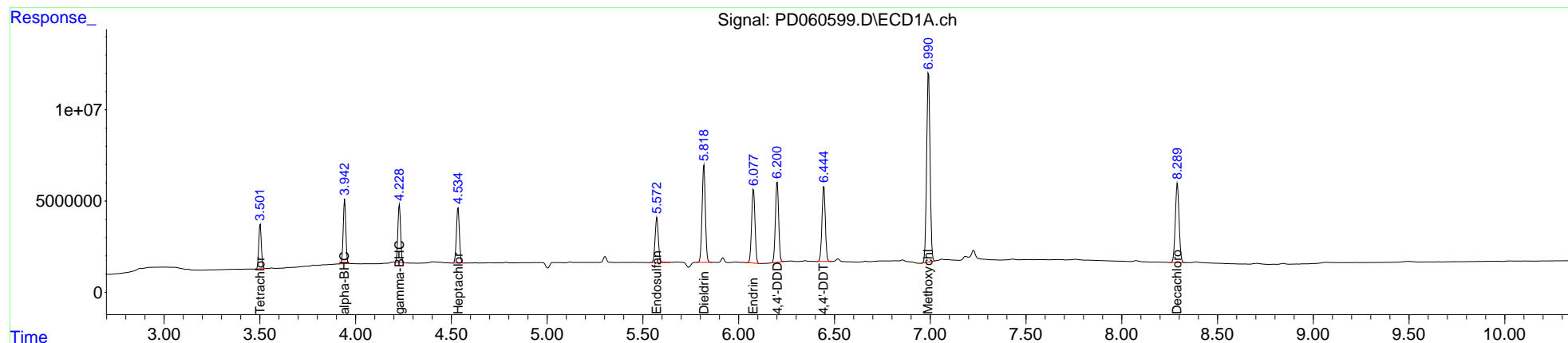
| Compound | RT#1 | RT#2 | Resp#1 | Resp#2 | ng/ml | ng/ml |
|-----------------------------|-------|-------|----------|----------|---------|---------|
| ----- | | | | | | |
| System Monitoring Compounds | | | | | | |
| 1) SA Tetrachlo... | 3.502 | 4.022 | 23088394 | 80383540 | 19.762 | 20.436 |
| 27) SA Decachlor... | 8.291 | 9.106 | 58847572 | 129.7E6 | 39.475 | 40.053 |
| Target Compounds | | | | | | |
| 2) A alpha-BHC | 3.943 | 4.413 | 33191124 | 119.6E6 | 19.709 | 20.261 |
| 3) MA gamma-BHC... | 4.229 | 4.698 | 31575660 | 109.3E6 | 19.576 | 20.388 |
| 4) MA Heptachlor | 4.535 | 5.210 | 32813631 | 105.8E6 | 19.540 | 20.112 |
| 9) A Endosulfan I | 5.574 | 6.261 | 29356175 | 87474859 | 20.205 | 20.436 |
| 13) MA Dieldrin | 5.819 | 6.519 | 62966323 | 188.7E6 | 39.649 | 40.393 |
| 14) MA Endrin | 6.078 | 6.736 | 49624401 | 129.8E6 | 38.353 | 35.220 |
| 16) A 4,4'-DDD | 6.202 | 6.856 | 52171138 | 150.3E6 | 40.604 | 40.799 |
| 17) MA 4,4'-DDT | 6.445 | 7.155 | 49746794 | 137.3E6 | 38.195 | 38.259 |
| 20) A Methoxychlor | 6.992 | 7.613 | 128.7E6 | 339.9E6 | 189.250 | 188.400 |
| ----- | | | | | | |

(f)=RT Delta > 1/2 Window (#)=Amounts differ by > 25% (m)=manual int.

Data Path : Z:\pestpcbsrv\HPCHEM1\ECD_D\Data\PD120520\
 Data File : PD060599.D
 Signal(s) : Signal #1: ECD1A.ch Signal #2: ECD2B.ch
 Acq On : 04 Dec 2020 09:58
 Operator : DD\AJ
 Sample : INDA333
 Misc :
 ALS Vial : 7 Sample Multiplier: 1

Integration File signal 1: autoint1.e
 Integration File signal 2: autoint2.e
 Quant Time: Dec 05 00:35:28 2020
 Quant Method : Z:\pestpcbsrv\HPCHEM1\ECD_D\Method\PD120420CLP.M
 Quant Title : GC Extractables
 QLast Update : Fri Dec 04 03:58:39 2020
 Response via : Initial Calibration
 Integrator: ChemStation

Volume Inj. : 1 µl
 Signal #1 Phase : ZB-MR2 Signal #2 Phase: ZB-MR1
 Signal #1 Info : 30M x 0.32mm x0.2 Signal #2 Info : 30M x 0.32mm x 0.50µm



Instrument :
 ECD_D
 ClientSampleId :
 INDA3033