

Data Path : Z:\pestpcbsrv\HPCHEM1\ECD_D\Data\PD120523\
 Data File : PD079916.D
 Signal(s) : Signal #1: ECD1A.ch Signal #2: ECD2B.ch
 Acq On : 05 Dec 2023 13:03
 Operator : AR\AJ
 Sample : RESC014
 Misc :
 ALS Vial : 2 Sample Multiplier: 1

Instrument :
 ECD_D
ClientSampleId :
 RESC016

Manual Integrations
APPROVED

Reviewed By :Yogesh Patel 12/06/2023
 Supervised By :Ankita Jodhani 12/06/2023

Integration File signal 1: autoint1.e
 Integration File signal 2: autoint2.e
 Quant Time: Dec 05 17:15:13 2023
 Quant Method : Z:\pestpcbsrv\HPCHEM1\ECD_D\Method\PD120523CLP.M
 Quant Title : GC Extractables
 QLast Update : Tue Dec 05 17:09:24 2023
 Response via : Initial Calibration
 Integrator: ChemStation

Volume Inj. : 1 µl
 Signal #1 Phase : ZB-MR2 Signal #2 Phase: ZB-MR2
 Signal #1 Info : 30M x 0.32mm x0.5 Signal #2 Info : 30M x 0.32mm x 0.25µm

Compound	RT#1	RT#2	Resp#1	Resp#2	ng/ml	ng/ml

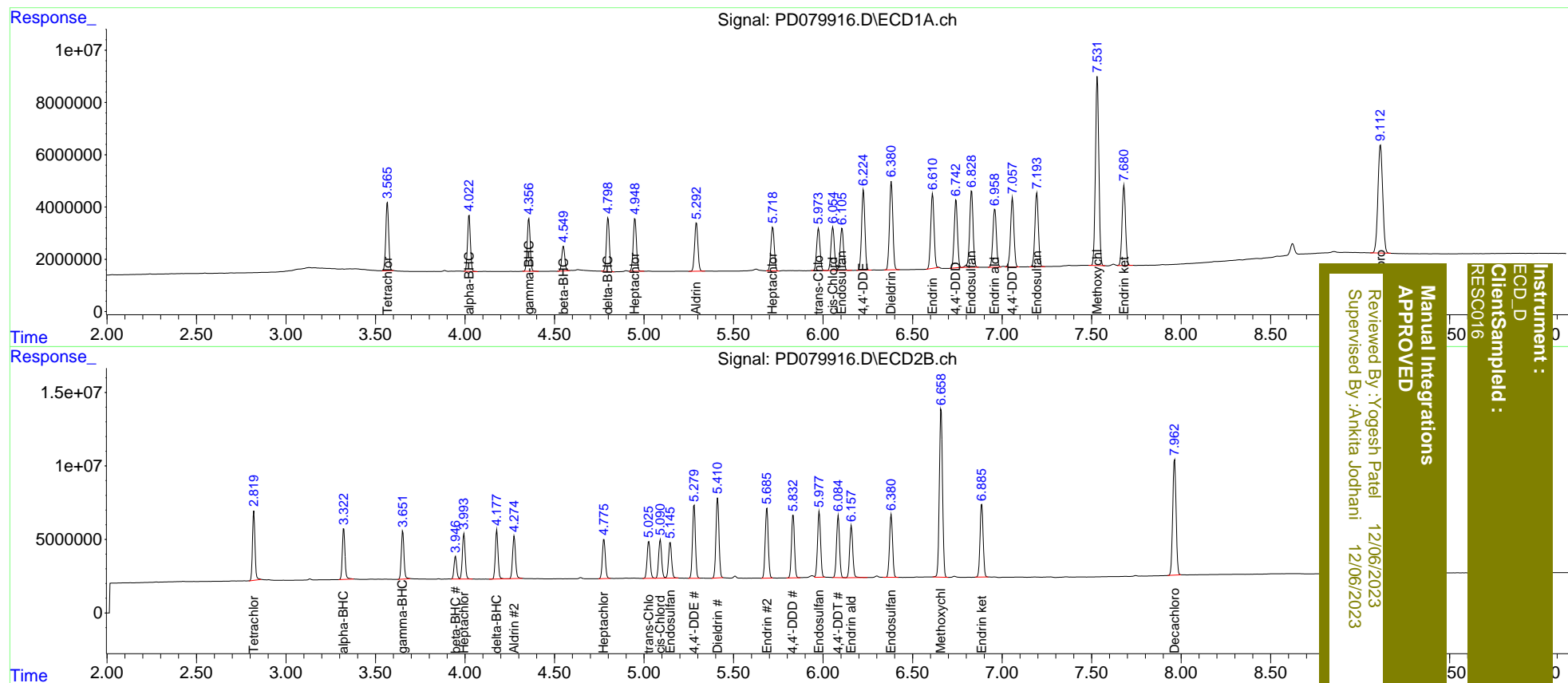
System Monitoring Compounds						
1) SA Tetrachlo...	3.567	2.819	29253960	45890819	20.452	20.021m
27) SA Decachlor...	9.113	7.962	76765454	103.7E6	41.056	40.075m
Target Compounds						
2) A alpha-BHC	4.023	3.322	23947332	35881040	9.930	9.780m
3) MA gamma-BHC...	4.357	3.653	23277282	33986798	10.060	9.933
4) MA Heptachlor	4.950	3.994	25126769	33942387	10.313	10.116
5) MB Aldrin	5.293	4.275	23723646	33051959	10.178	9.775
6) B beta-BHC	4.550	3.947	10970312	16169175	10.374	10.144
7) B delta-BHC	4.799	4.178	23818880	35161791	9.790	9.586
8) B Heptachlo...	5.719	4.776	22057045	31034806	10.023	9.712
9) A Endosulfan I	6.106	5.147	21295505	29227322	10.460	10.274
10) B trans-Chl...	5.974	5.027	21179303	29868277	9.963	9.719
11) B cis-Chlor...	6.055	5.091	21783915	30739291	10.002	9.743
12) B 4,4'-DDE	6.226	5.280	38997942	56416466	19.466	19.206
13) MA Dieldrin	6.381	5.411	44299174	63713274	20.350	19.856
14) MA Endrin	6.612	5.685	36999738	56529156	20.597	20.279m
15) B Endosulfa...	6.830	5.977	39187167	53045563	20.167	19.395m
16) A 4,4'-DDD	6.743	5.833	32954131	49673181	20.283	20.232
17) MA 4,4'-DDT	7.058	6.085	34871625	49097986	20.824	19.935
18) B Endrin al...	6.960	6.158	30413099	42999130	20.327	20.314
19) B Endosulfa...	7.194	6.381	37713578	50827331	20.326	19.647
20) A Methoxychlor	7.532	6.660	96143384	141.8E6	105.789	107.006
21) B Endrin ke...	7.681	6.885	41142329	59911771	20.524	20.238m

(f)=RT Delta > 1/2 Window (#)=Amounts differ by > 25% (m)=manual int.

Data Path : Z:\pestpcbsrv\HPCHEM1\ECD_D\Data\PD120523\
 Data File : PD079916.D
 Signal(s) : Signal #1: ECD1A.ch Signal #2: ECD2B.ch
 Acq On : 05 Dec 2023 13:03
 Operator : AR\AJ
 Sample : RESC014
 Misc :
 ALS Vial : 2 Sample Multiplier: 1

Integration File signal 1: autoint1.e
 Integration File signal 2: autoint2.e
 Quant Time: Dec 05 17:15:13 2023
 Quant Method : Z:\pestpcbsrv\HPCHEM1\ECD_D\Method\PD120523CLP.M
 Quant Title : GC Extractables
 QLast Update : Tue Dec 05 17:09:24 2023
 Response via : Initial Calibration
 Integrator: ChemStation

Volume Inj. : 1 µl
 Signal #1 Phase : ZB-MR1 Signal #2 Phase: ZB-MR2
 Signal #1 Info : 30M x 0.32mm x0.5 Signal #2 Info : 30M x 0.32mm x 0.25µm



Manual Integrations APPROVED
 Reviewed By : Yogesh Patel 12/06/2023
 Supervised By : Ankita Jodhani 12/06/2023
Client Sampled :
 RESC016
Instrument :
 ECD_D

Data Path : Z:\pestpcbsrv\HPCHEM1\ECD_D\Data\PD120523\
 Data File : PD079916.D
 Acq On : 05 Dec 2023 13:03
 Operator : AR\AJ
 Sample : RESC014
 Misc :
 ALS Vial : 2 Sample Multiplier: 1

Instrument :
 ECD_D
 ClientSampleId :
 RESC016

Manual Integrations
 APPROVED

Reviewed By :Yogesh Patel 12/06/2023
 Supervised By :Ankita Jodhani 12/06/2023

Integration File signal 1: autoint1.e
 Integration File signal 2: autoint2.e

Method : Z:\pestpcbsrv\HPCHEM1\ECD_D\Method\PD120523CLP.M
 Title : GC Extractables
 Last Update : Tue Dec 05 17:09:24 2023
 Integrator: ChemStation

RT#1	RT#2	Resolution
3.567	4.023	100.00%
4.023	4.357	100.00%
4.357	4.550	100.00%
4.550	4.799	100.00%
4.799	4.950	100.00%
4.950	5.293	100.00%
5.293	5.719	100.00%
5.719	5.974	100.00%
5.974	6.055	100.00%
6.055	6.106	97.03%
6.106	6.226	100.00%
6.226	6.381	100.00%
6.381	6.612	100.00%
6.612	6.743	100.00%
6.743	6.830	100.00%
6.830	6.960	100.00%
6.960	7.058	100.00%
7.058	7.194	100.00%
7.194	7.532	100.00%
7.532	7.681	100.00%
7.681	9.113	100.00%

Signal #2

2.821	3.323	100.00%
3.323	3.653	100.00%
3.653	3.947	100.00%
3.947	3.994	97.59%
3.994	4.178	100.00%
4.178	4.275	100.00%
4.275	4.776	100.00%
4.776	5.027	100.00%
5.027	5.091	99.10%
5.091	5.147	98.02%
5.147	5.280	100.00%
5.280	5.411	100.00%
5.411	5.687	100.00%
5.687	5.833	100.00%
5.833	5.979	100.00%
5.979	6.085	100.00%
6.085	6.158	100.00%
6.158	6.381	100.00%
6.381	6.660	100.00%
6.660	6.887	100.00%
6.887	7.964	100.00%

Data Path : Z:\pestpcbsrv\HPCHEM1\ECD_D\Data\PD120523\
 Data File : PD079916.D
 Signal(s) : Signal #1: ECD1A.ch Signal #2: ECD2B.ch
 Acq On : 05 Dec 2023 13:03
 Operator : AR\AJ
 Sample : RESC014
 Misc :
 ALS Vial : 2 Sample Multiplier: 1

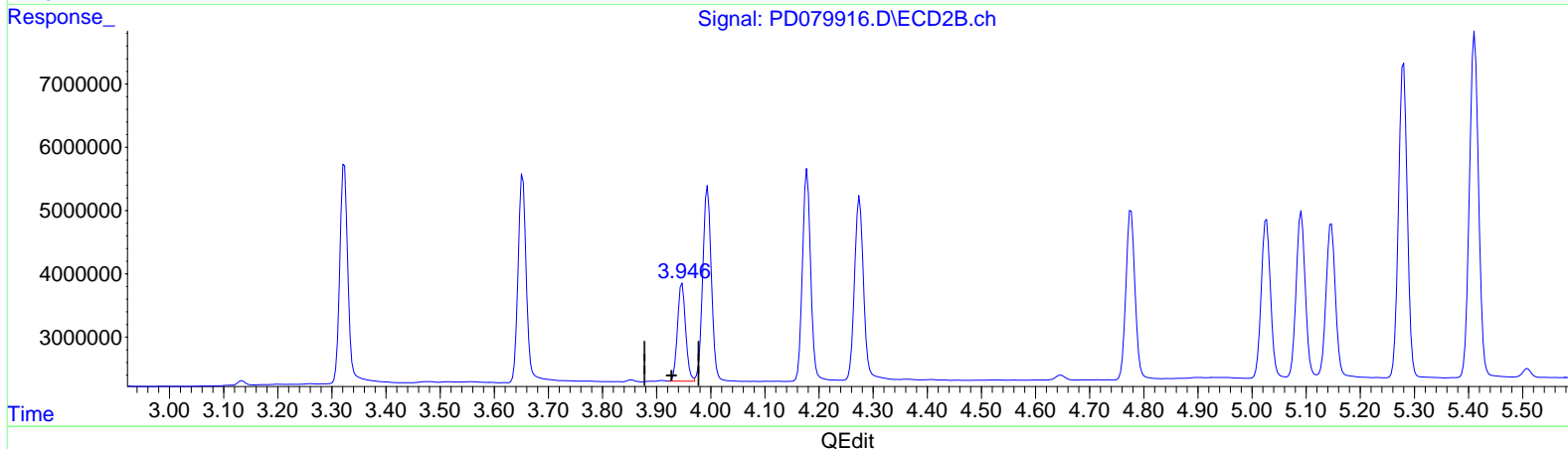
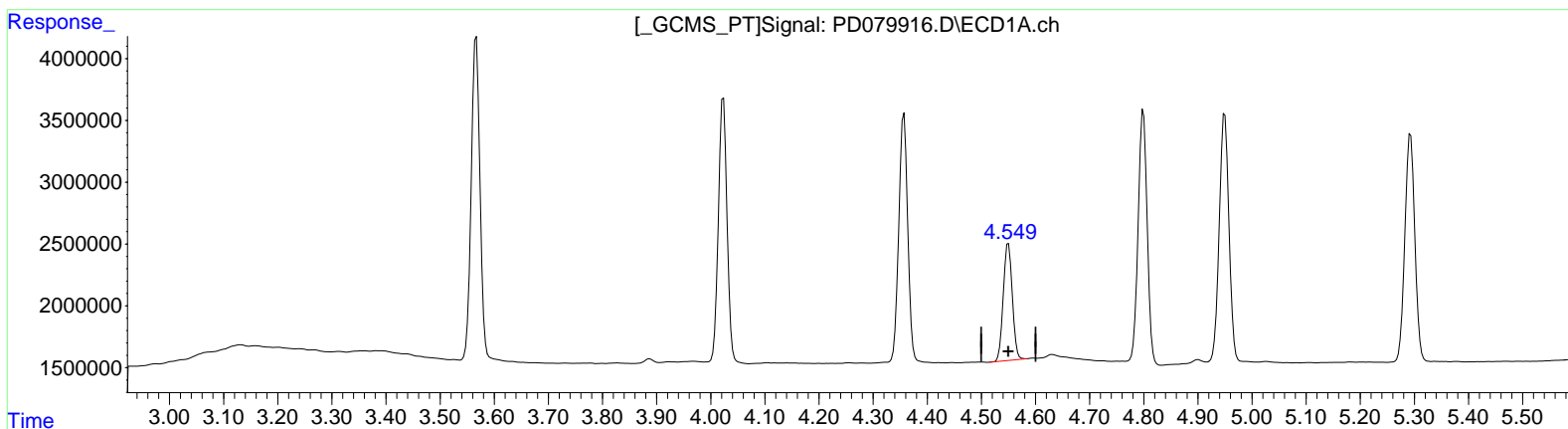
Instrument :
 ECD_D
ClientSampleId :
 RESC016

Manual Integrations
APPROVED

Reviewed By :Yogesh Patel 12/06/2023
 Supervised By :Ankita Jodhani 12/06/2023

Integration File signal 1: autoint1.e
 Integration File signal 2: autoint2.e
 Quant Time: Dec 05 17:15:13 2023
 Quant Method : Z:\pestpcbsrv\HPCHEM1\ECD_D\Method\PD120523CLP.M
 Quant Title : GC Extractables
 QLast Update : Tue Dec 05 17:09:24 2023
 Response via : Initial Calibration
 Integrator: ChemStation

Volume Inj. : 1 µl
 Signal #1 Phase : ZB-MR1 Signal #2 Phase: ZB-MR2
 Signal #1 Info : 30M x 0.32mm x0.5 Signal #2 Info : 30M x 0.32mm x 0.25µm



(6) beta-BHC (B)
 4.550min 10.374 ng/ml
 response 10970312

(6) beta-BHC #2 (B)
 3.947min 10.144 ng/ml
 response 16169175

Data Path : Z:\pestpcbsrv\HPCHEM1\ECD_D\Data\PD120523\
 Data File : PD079916.D
 Signal(s) : Signal #1: ECD1A.ch Signal #2: ECD2B.ch
 Acq On : 05 Dec 2023 13:03
 Operator : AR\AJ
 Sample : RESC014
 Misc :
 ALS Vial : 2 Sample Multiplier: 1

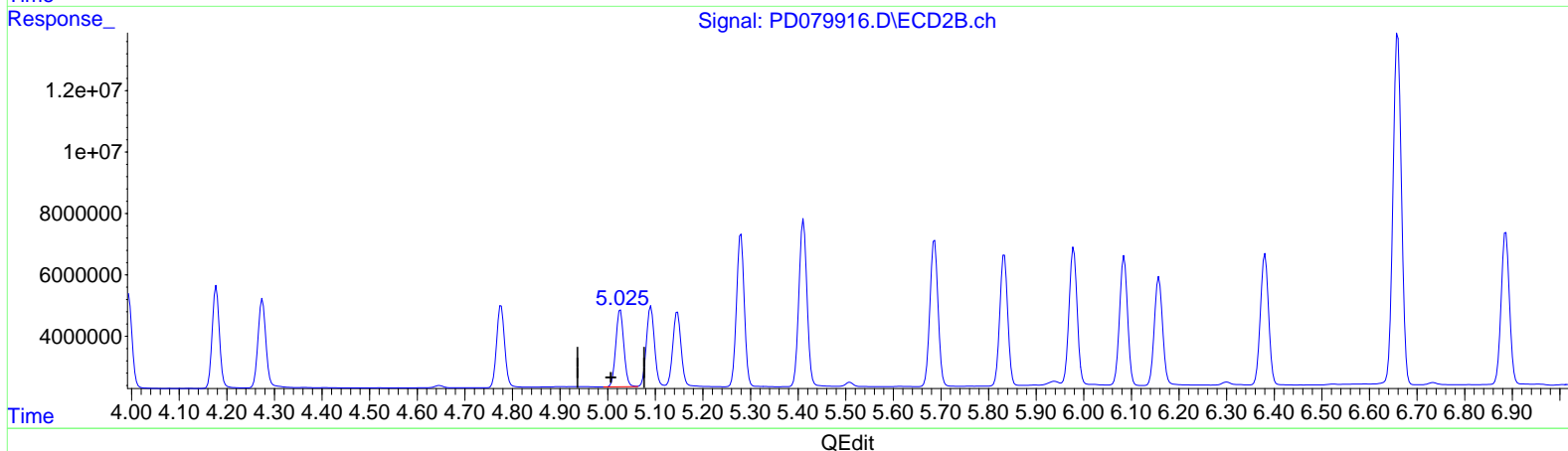
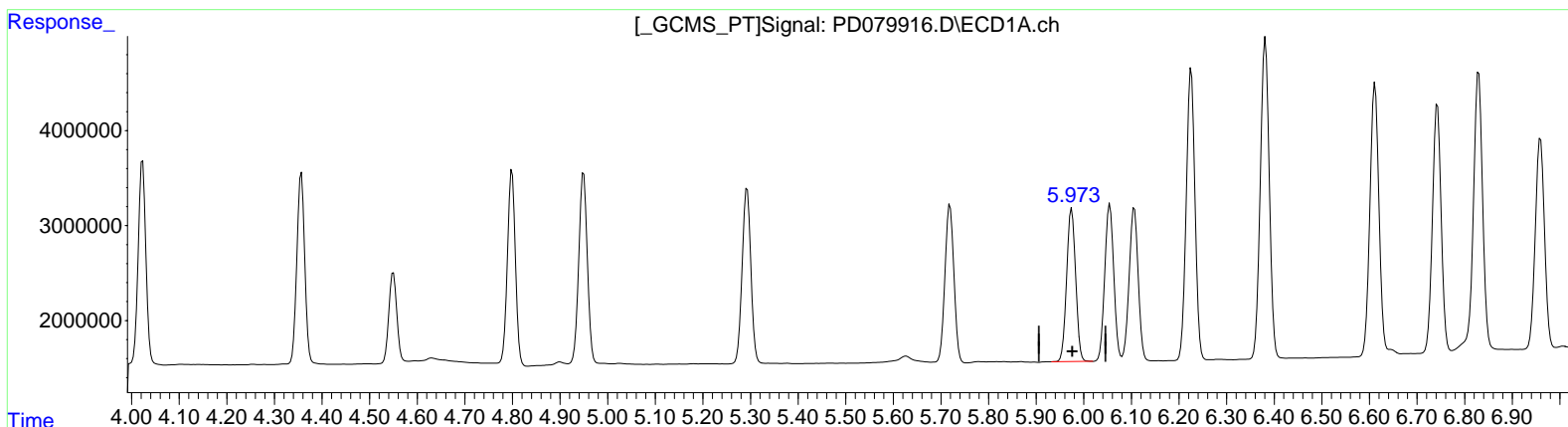
Instrument :
 ECD_D
 ClientSampleId :
 RESC016

Manual Integrations
APPROVED

Reviewed By :Yogesh Patel 12/06/2023
 Supervised By :Ankita Jodhani 12/06/2023

Integration File signal 1: autoint1.e
 Integration File signal 2: autoint2.e
 Quant Time: Dec 05 17:15:13 2023
 Quant Method : Z:\pestpcbsrv\HPCHEM1\ECD_D\Method\PD120523CLP.M
 Quant Title : GC Extractables
 QLast Update : Tue Dec 05 17:09:24 2023
 Response via : Initial Calibration
 Integrator: ChemStation

Volume Inj. : 1 µl
 Signal #1 Phase : ZB-MR1 Signal #2 Phase: ZB-MR2
 Signal #1 Info : 30M x 0.32mm x0.5 Signal #2 Info : 30M x 0.32mm x 0.25µm



(10) trans-Chlordane (B)
 5.974min 9.963 ng/ml
 response 21179303

(10) trans-Chlordane #2 (B)
 5.027min 9.719 ng/ml
 response 29868277

Data Path : Z:\pestpcbsrv\HPCHEM1\ECD_D\Data\PD120523\
 Data File : PD079916.D
 Signal(s) : Signal #1: ECD1A.ch Signal #2: ECD2B.ch
 Acq On : 05 Dec 2023 13:03
 Operator : AR\AJ
 Sample : RESC014
 Misc :
 ALS Vial : 2 Sample Multiplier: 1

Instrument :

ECD_D

ClientSampleId :

RESC016

Manual Integrations

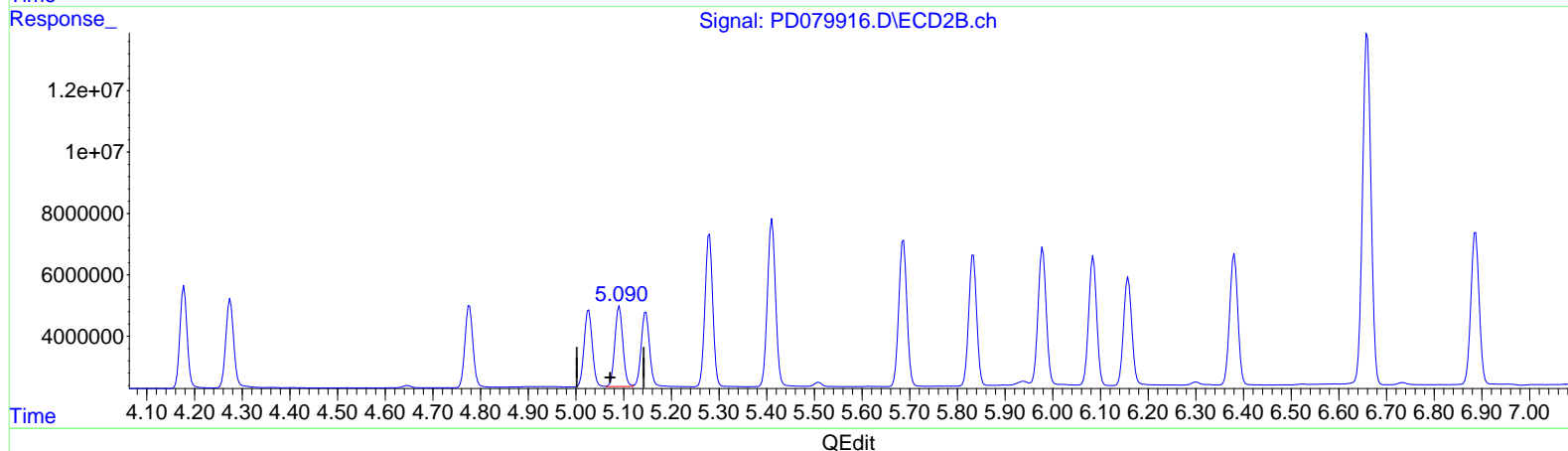
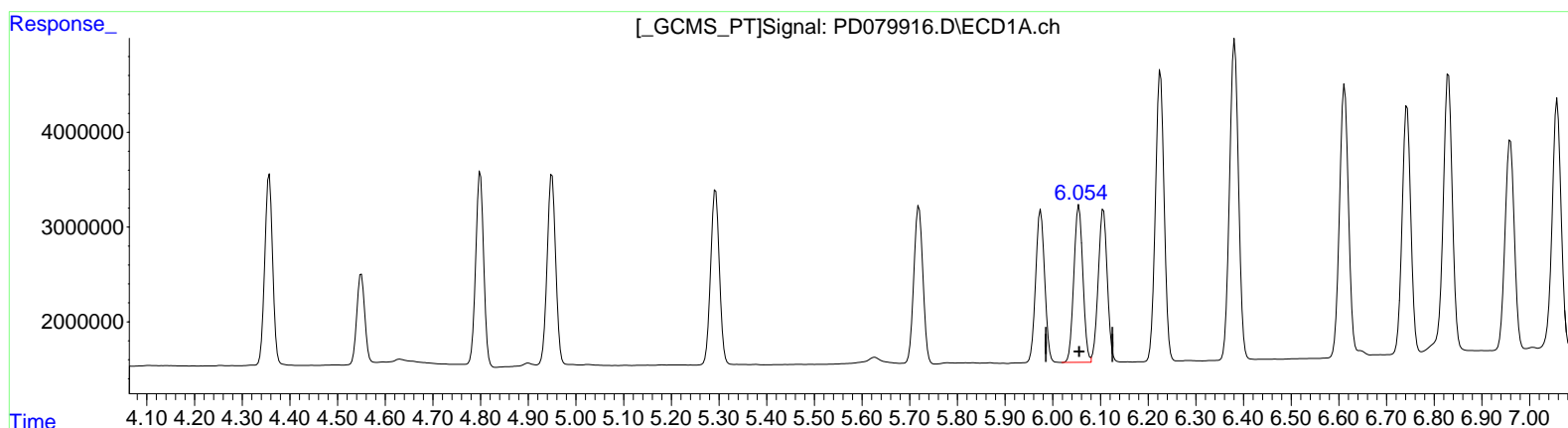
APPROVED

Reviewed By :Yogesh Patel 12/06/2023

Supervised By :Ankita Jodhani 12/06/2023

Integration File signal 1: autoint1.e
 Integration File signal 2: autoint2.e
 Quant Time: Dec 05 17:15:13 2023
 Quant Method : Z:\pestpcbsrv\HPCHEM1\ECD_D\Method\PD120523CLP.M
 Quant Title : GC Extractables
 QLast Update : Tue Dec 05 17:09:24 2023
 Response via : Initial Calibration
 Integrator: ChemStation

Volume Inj. : 1 µl
 Signal #1 Phase : ZB-MR1 Signal #2 Phase: ZB-MR2
 Signal #1 Info : 30M x 0.32mm x0.5 Signal #2 Info : 30M x 0.32mm x 0.25µm



(11) cis-Chlordane (B)

6.055min 10.002 ng/ml

response 21783915

(11) cis-Chlordane #2 (B)

5.091min 9.743 ng/ml

response 30739291