

Data Path : Z:\pestpcbsrv\HPCHEM1\ECD_D\Data\PD120523\
 Data File : PD079926.D
 Signal(s) : Signal #1: ECD1A.ch Signal #2: ECD2B.ch
 Acq On : 05 Dec 2023 15:16
 Operator : AR\AJ
 Sample : INDB201
 Misc :
 ALS Vial : 12 Sample Multiplier: 1

Instrument :
 ECD_D
 ClientSampleId :
 INDB2027

Integration File signal 1: autoint1.e
 Integration File signal 2: autoint2.e
 Quant Time: Dec 05 17:02:11 2023
 Quant Method : Z:\pestpcbsrv\HPCHEM1\ECD_D\Method\PD120523CLP.M
 Quant Title : GC Extractables
 QLast Update : Tue Dec 05 16:52:57 2023
 Response via : Initial Calibration
 Integrator: ChemStation

Volume Inj. : 1 µl
 Signal #1 Phase : ZB-MR1 Signal #2 Phase: ZB-MR2
 Signal #1 Info : 30M x 0.32mm x0.5 Signal #2 Info : 30M x 0.32mm x 0.25µm

Compound	RT#1	RT#2	Resp#1	Resp#2	ng/ml	ng/ml

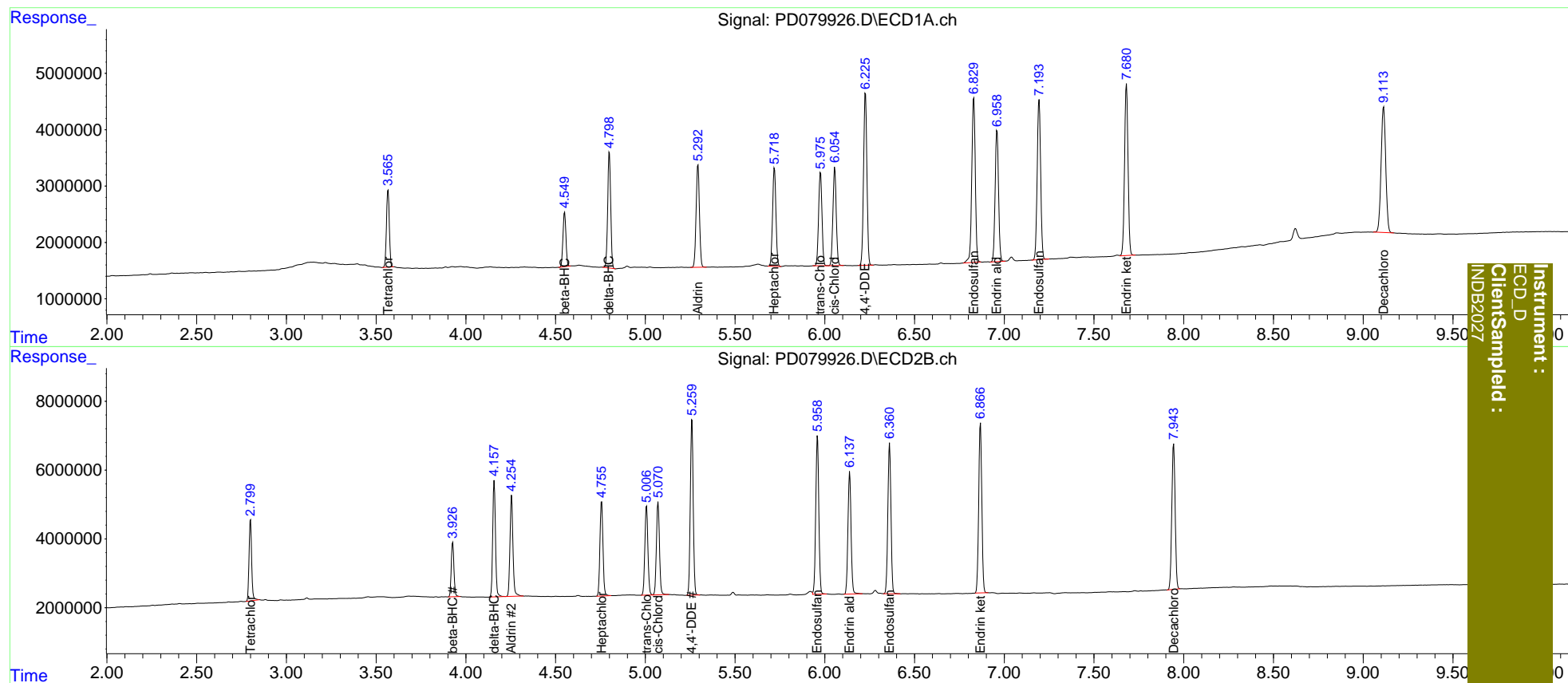
System Monitoring Compounds						
1) SA Tetrachlo...	3.567	2.800	15154741	24161056	10.412	10.307
27) SA Decachlor...	9.114	7.944	40120358	54755636	21.208	21.003
Target Compounds						
5) MB Aldrin	5.294	4.255	23470486	33681541	10.143	9.961
6) B beta-BHC	4.551	3.927	11033159	16480677	10.612	10.475
7) B delta-BHC	4.800	4.158	23999216	36006974	9.856	9.759
8) B Heptachlo...	5.720	4.757	22521397	32226536	10.402	10.127
10) B trans-Chl...	5.976	5.007	21572872	30664273	10.289	9.997
11) B cis-Chlor...	6.056	5.071	22241551	31712837	10.387	10.099
12) B 4,4'-DDE	6.227	5.260	39679257	57604035	19.730	19.425
15) B Endosulfa...	6.830	5.959	39866235	54910943	21.041	20.172
18) B Endrin al...	6.960	6.139	30699127	42949319	20.877	20.509
19) B Endosulfa...	7.194	6.361	38042184	52212596	20.788	20.301
21) B Endrin ke...	7.681	6.867	40910597	59691124	20.597	20.195

(f)=RT Delta > 1/2 Window (#)=Amounts differ by > 25% (m)=manual int.

Data Path : Z:\pestpcbsrv\HPCHEM1\ECD_D\Data\PD120523\
 Data File : PD079926.D
 Signal(s) : Signal #1: ECD1A.ch Signal #2: ECD2B.ch
 Acq On : 05 Dec 2023 15:16
 Operator : AR\AJ
 Sample : INDB201
 Misc :
 ALS Vial : 12 Sample Multiplier: 1

Integration File signal 1: autoint1.e
 Integration File signal 2: autoint2.e
 Quant Time: Dec 05 17:02:11 2023
 Quant Method : Z:\pestpcbsrv\HPCHEM1\ECD_D\Method\PD120523CLP.M
 Quant Title : GC Extractables
 QLast Update : Tue Dec 05 16:52:57 2023
 Response via : Initial Calibration
 Integrator: ChemStation

Volume Inj. : 1 µl
 Signal #1 Phase : ZB-MR1 Signal #2 Phase: ZB-MR2
 Signal #1 Info : 30M x 0.32mm x0.5 Signal #2 Info : 30M x 0.32mm x 0.25µm



Instrument :
 ECD_D
 ClientSampleId :
 INDB2027