

Data Path : Z:\pestpcbsrv\HPCHEM1\ECD\_D\Data\PD120523\  
 Data File : PD079927.D  
 Signal(s) : Signal #1: ECD1A.ch Signal #2: ECD2B.ch  
 Acq On : 05 Dec 2023 15:29  
 Operator : AR\AJ  
 Sample : INDA301  
 Misc :  
 ALS Vial : 13 Sample Multiplier: 1

Instrument :  
 ECD\_D  
 ClientSampleId :  
 INDA3028

Integration File signal 1: autoint1.e  
 Integration File signal 2: autoint2.e  
 Quant Time: Dec 05 15:44:22 2023  
 Quant Method : Z:\pestpcbsrv\HPCHEM1\ECD\_D\Method\PD120523CLP.M  
 Quant Title : GC Extractables  
 QLast Update : Tue Dec 05 15:44:07 2023  
 Response via : Initial Calibration  
 Integrator: ChemStation

Volume Inj. : 1 µl  
 Signal #1 Phase : ZB-MR1 Signal #2 Phase: ZB-MR2  
 Signal #1 Info : 30M x 0.32mm x0.5 Signal #2 Info : 30M x 0.32mm x 0.25µm

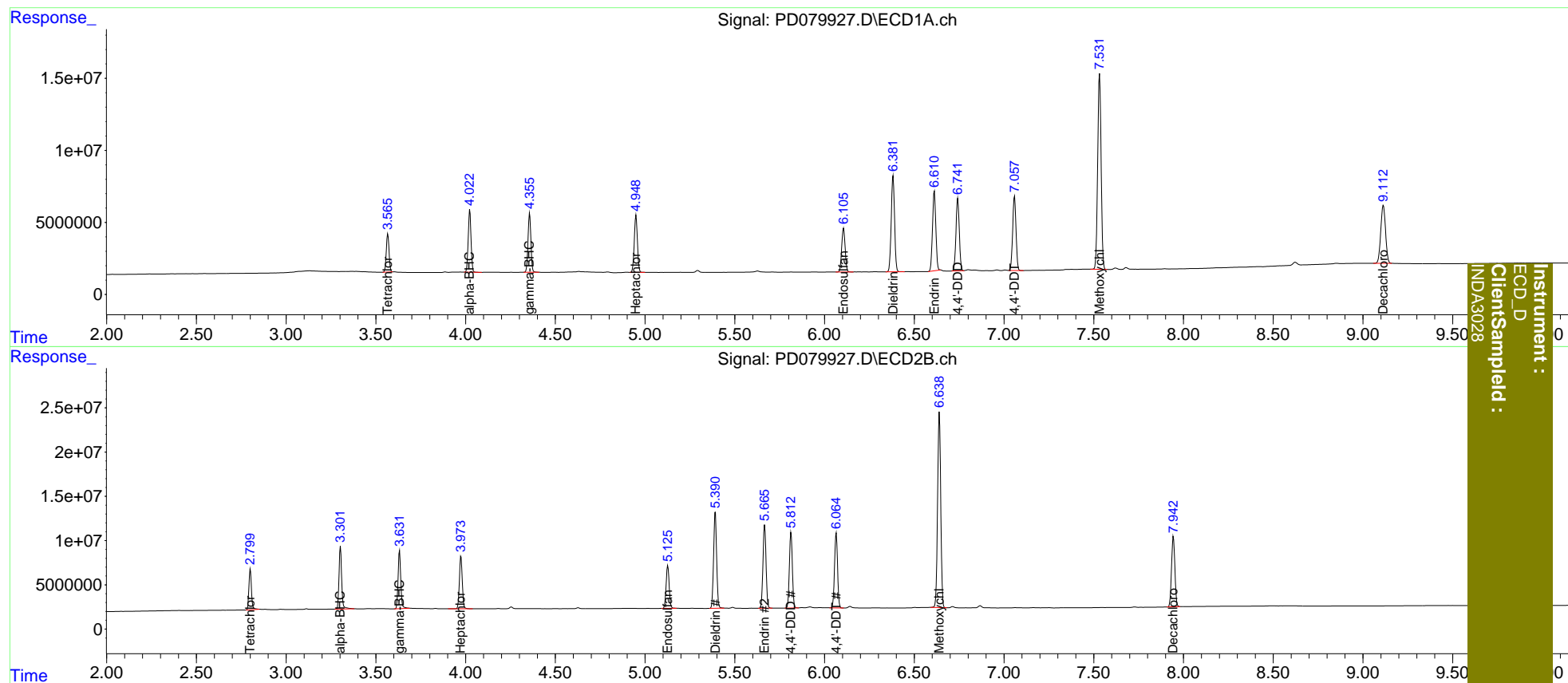
| Compound                    | RT#1  | RT#2  | Resp#1   | Resp#2   | ng/ml   | ng/ml   |
|-----------------------------|-------|-------|----------|----------|---------|---------|
| -----                       |       |       |          |          |         |         |
| System Monitoring Compounds |       |       |          |          |         |         |
| 1) SA Tetrachlo...          | 3.567 | 2.800 | 28272206 | 45786806 | 20.000  | 20.000  |
| 27) SA Decachlor...         | 9.114 | 7.944 | 74702612 | 102.6E6  | 40.000  | 40.000  |
| Target Compounds            |       |       |          |          |         |         |
| 2) A alpha-BHC              | 4.023 | 3.303 | 47517234 | 72877834 | 20.000  | 20.000  |
| 3) MA gamma-BHC...          | 4.357 | 3.632 | 45596324 | 68293383 | 20.000  | 20.000  |
| 4) MA Heptachlor            | 4.950 | 3.974 | 48005707 | 66539782 | 20.000  | 20.000  |
| 9) A Endosulfan I           | 6.106 | 5.127 | 40232564 | 56609349 | 20.000  | 20.000  |
| 13) MA Dieldrin             | 6.382 | 5.391 | 86165585 | 128.4E6  | 40.000  | 40.000  |
| 14) MA Endrin               | 6.612 | 5.666 | 71145237 | 111.4E6  | 40.000  | 40.000  |
| 16) A 4,4'-DDD              | 6.742 | 5.813 | 64512721 | 98144201 | 40.000  | 40.000  |
| 17) MA 4,4'-DDT             | 7.059 | 6.065 | 66598173 | 98978370 | 40.000  | 40.000  |
| 20) A Methoxychlor          | 7.532 | 6.640 | 180.4E6  | 269.4E6  | 200.000 | 200.000 |
| -----                       |       |       |          |          |         |         |

(f)=RT Delta > 1/2 Window (#)=Amounts differ by > 25% (m)=manual int.

Data Path : Z:\pestpcbsrv\HPCHEM1\ECD\_D\Data\PD120523\  
 Data File : PD079927.D  
 Signal(s) : Signal #1: ECD1A.ch Signal #2: ECD2B.ch  
 Acq On : 05 Dec 2023 15:29  
 Operator : AR\AJ  
 Sample : INDA301  
 Misc :  
 ALS Vial : 13 Sample Multiplier: 1

Integration File signal 1: autoint1.e  
 Integration File signal 2: autoint2.e  
 Quant Time: Dec 05 15:44:22 2023  
 Quant Method : Z:\pestpcbsrv\HPCHEM1\ECD\_D\Method\PD120523CLP.M  
 Quant Title : GC Extractables  
 QLast Update : Tue Dec 05 15:44:07 2023  
 Response via : Initial Calibration  
 Integrator: ChemStation

Volume Inj. : 1 µl  
 Signal #1 Phase : ZB-MR1 Signal #2 Phase: ZB-MR2  
 Signal #1 Info : 30M x 0.32mm x0.5 Signal #2 Info : 30M x 0.32mm x 0.25µm



Instrument :  
 ECD\_D  
 ClientSampled :  
 INDA3028