

Data Path : Z:\pestpcbsrv\HPCHEM1\ECD_D\Data\PD120523\
 Data File : PD079929.D
 Signal(s) : Signal #1: ECD1A.ch Signal #2: ECD2B.ch
 Acq On : 05 Dec 2023 15:56
 Operator : AR\AJ
 Sample : INDA401
 Misc :
 ALS Vial : 15 Sample Multiplier: 1

Instrument :
 ECD_D
 ClientSampleId :
 INDA4030

Integration File signal 1: autoint1.e
 Integration File signal 2: autoint2.e
 Quant Time: Dec 05 16:21:17 2023
 Quant Method : Z:\pestpcbsrv\HPCHEM1\ECD_D\Method\PD120523CLP.M
 Quant Title : GC Extractables
 QLast Update : Tue Dec 05 16:21:04 2023
 Response via : Initial Calibration
 Integrator: ChemStation

Volume Inj. : 1 µl
 Signal #1 Phase : ZB-MR1 Signal #2 Phase: ZB-MR2
 Signal #1 Info : 30M x 0.32mm x0.5 Signal #2 Info : 30M x 0.32mm x 0.25µm

Compound	RT#1	RT#2	Resp#1	Resp#2	ng/ml	ng/ml

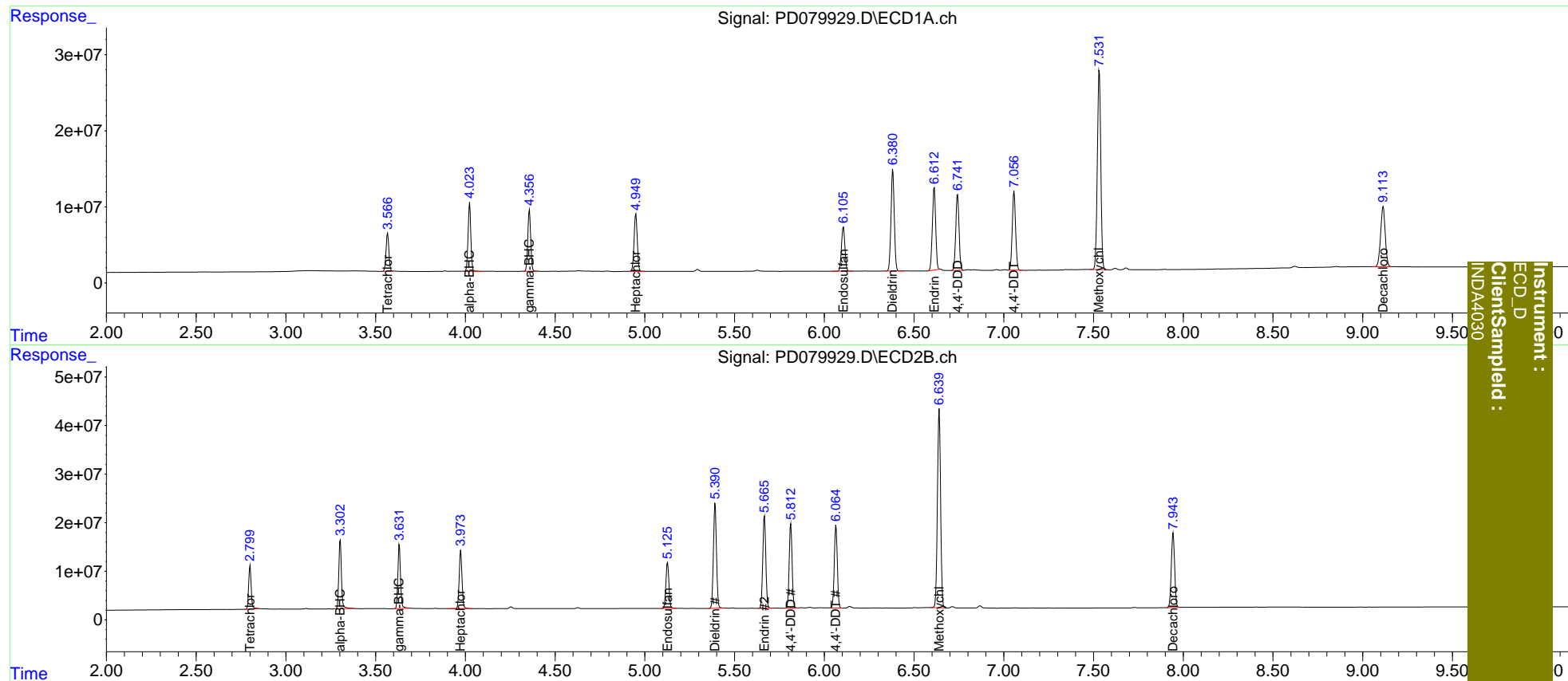
System Monitoring Compounds						
1) SA Tetrachlo...	3.567	2.801	54341634	88198077	37.540	38.001
27) SA Decachlor...	9.114	7.944	140.9E6	195.7E6	74.024	74.551
Target Compounds						
2) A alpha-BHC	4.024	3.303	96328499	146.4E6	40.535	40.311
3) MA gamma-BHC...	4.357	3.632	90797634	136.2E6	39.509	39.833
4) MA Heptachlor	4.950	3.974	93405872	131.5E6	38.192	39.211
9) A Endosulfan I	6.107	5.127	76846838	110.4E6	37.231	38.677
13) MA Dieldrin	6.382	5.392	169.9E6	255.7E6	78.211	80.128
14) MA Endrin	6.613	5.667	139.5E6	220.6E6	77.687	79.387
16) A 4,4'-DDD	6.743	5.814	127.3E6	194.7E6	78.550	79.704
17) MA 4,4'-DDT	7.057	6.065	132.5E6	199.0E6	79.715	81.823
20) A Methoxychlor	7.532	6.640	347.9E6	503.8E6	377.874	370.905

(f)=RT Delta > 1/2 Window (#)=Amounts differ by > 25% (m)=manual int.

Data Path : Z:\pestpcbsrv\HPCHEM1\ECD_D\Data\PD120523\
 Data File : PD079929.D
 Signal(s) : Signal #1: ECD1A.ch Signal #2: ECD2B.ch
 Acq On : 05 Dec 2023 15:56
 Operator : AR\AJ
 Sample : INDA401
 Misc :
 ALS Vial : 15 Sample Multiplier: 1

Integration File signal 1: autoint1.e
 Integration File signal 2: autoint2.e
 Quant Time: Dec 05 16:21:17 2023
 Quant Method : Z:\pestpcbsrv\HPCHEM1\ECD_D\Method\PD120523CLP.M
 Quant Title : GC Extractables
 QLast Update : Tue Dec 05 16:21:04 2023
 Response via : Initial Calibration
 Integrator: ChemStation

Volume Inj. : 1 µl
 Signal #1 Phase : ZB-MR1 Signal #2 Phase: ZB-MR2
 Signal #1 Info : 30M x 0.32mm x0.5 Signal #2 Info : 30M x 0.32mm x 0.25µm



Instrument :
 ECD_D
 ClientSampleID :
 INDA4030