

Data Path : Z:\pestpcbsrv\HPCHEM1\ECD\_D\Data\PD120523\  
 Data File : PD079932.D  
 Signal(s) : Signal #1: ECD1A.ch Signal #2: ECD2B.ch  
 Acq On : 05 Dec 2023 16:36  
 Operator : AR\AJ  
 Sample : INDB501  
 Misc :  
 ALS Vial : 18 Sample Multiplier: 1

Instrument :  
 ECD\_D  
 ClientSampleId :  
 INDB5033

Integration File signal 1: autoint1.e  
 Integration File signal 2: autoint2.e  
 Quant Time: Dec 05 16:56:47 2023  
 Quant Method : Z:\pestpcbsrv\HPCHEM1\ECD\_D\Method\PD120523CLP.M  
 Quant Title : GC Extractables  
 QLast Update : Tue Dec 05 16:52:57 2023  
 Response via : Initial Calibration  
 Integrator: ChemStation

Volume Inj. : 1 µl  
 Signal #1 Phase : ZB-MR1 Signal #2 Phase: ZB-MR2  
 Signal #1 Info : 30M x 0.32mm x0.5 Signal #2 Info : 30M x 0.32mm x 0.25µm

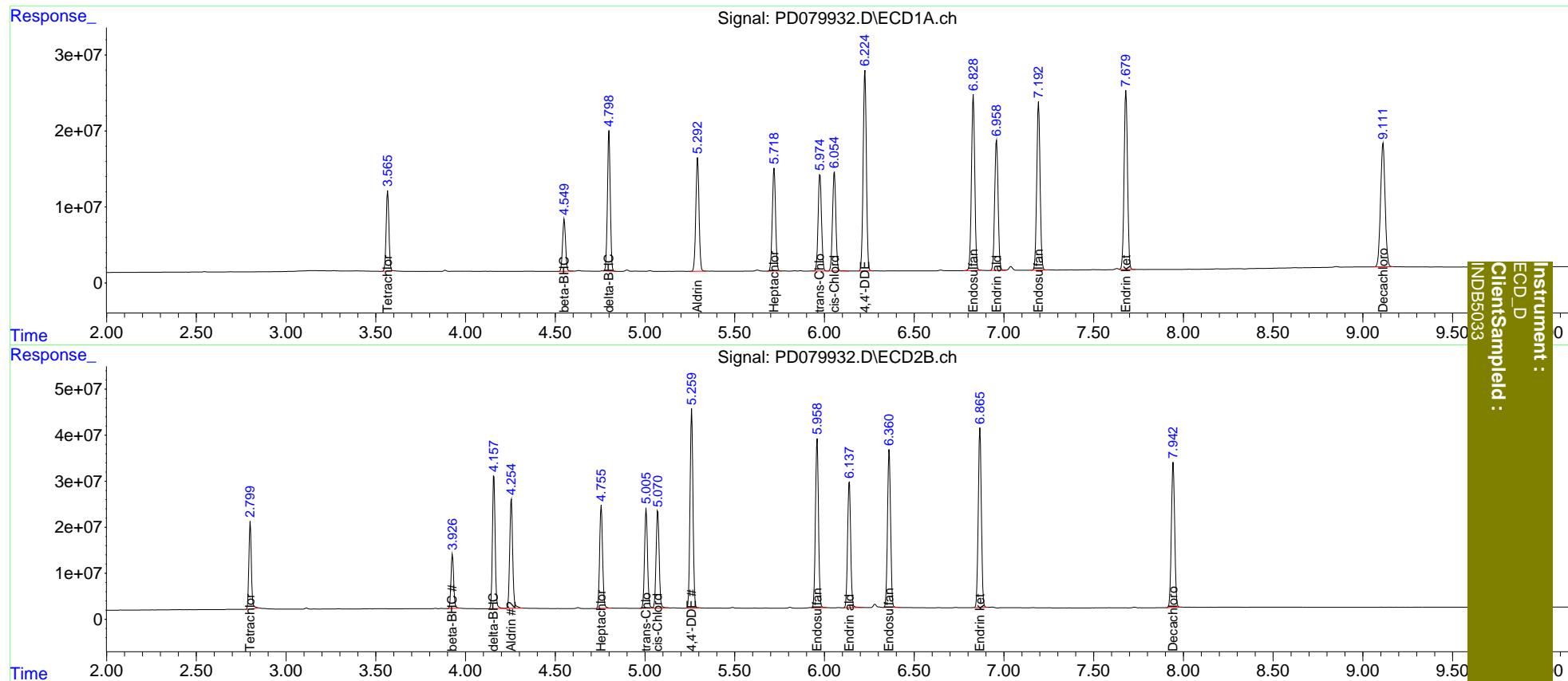
Compound	RT#1	RT#2	Resp#1	Resp#2	ng/ml	ng/ml
-----						
System Monitoring Compounds						
1) SA Tetrachlo...	3.567	2.801	113.3E6	184.0E6	78.536	79.209
27) SA Decachlor...	9.113	7.943	287.1E6	402.0E6	155.005	156.938
Target Compounds						
5) MB Aldrin	5.294	4.255	185.8E6	274.9E6	80.438	81.222
6) B beta-BHC	4.550	3.928	78505134	121.1E6	76.831	78.085
7) B delta-BHC	4.800	4.158	202.7E6	305.3E6	82.571	82.195
8) B Heptachlo...	5.720	4.757	169.3E6	254.3E6	79.101	80.275
10) B trans-Chl...	5.975	5.007	165.8E6	248.9E6	79.649	81.084
11) B cis-Chlor...	6.055	5.071	167.4E6	251.7E6	79.089	80.421
12) B 4,4'-DDE	6.226	5.260	330.7E6	490.3E6	163.524	164.188
15) B Endosulfa...	6.830	5.959	294.4E6	434.5E6	157.876	160.431
18) B Endrin al...	6.959	6.139	228.3E6	329.8E6	157.414	159.045
19) B Endosulfa...	7.193	6.361	285.9E6	407.7E6	158.197	159.675
21) B Endrin ke...	7.680	6.867	313.5E6	468.2E6	159.472	159.476
-----						

(f)=RT Delta > 1/2 Window (#)=Amounts differ by > 25% (m)=manual int.

Data Path : Z:\pestpcbsrv\HPCHEM1\ECD\_D\Data\PD120523\  
 Data File : PD079932.D  
 Signal(s) : Signal #1: ECD1A.ch Signal #2: ECD2B.ch  
 Acq On : 05 Dec 2023 16:36  
 Operator : AR\AJ  
 Sample : INDB501  
 Misc :  
 ALS Vial : 18 Sample Multiplier: 1

Integration File signal 1: autoint1.e  
 Integration File signal 2: autoint2.e  
 Quant Time: Dec 05 16:56:47 2023  
 Quant Method : Z:\pestpcbsrv\HPCHEM1\ECD\_D\Method\PD120523CLP.M  
 Quant Title : GC Extractables  
 QLast Update : Tue Dec 05 16:52:57 2023  
 Response via : Initial Calibration  
 Integrator: ChemStation

Volume Inj. : 1 µl  
 Signal #1 Phase : ZB-MR1 Signal #2 Phase: ZB-MR2  
 Signal #1 Info : 30M x 0.32mm x0.5 Signal #2 Info : 30M x 0.32mm x 0.25µm



Instrument :  
 ECD\_D  
 ClientSampleId :  
 INDB5033