

Data Path : Z:\pestpcbsrv\HPCHEM1\ECD_D\Data\PD120920\
 Data File : PD060660.D
 Signal(s) : Signal #1: ECD1A.ch Signal #2: ECD2B.ch
 Acq On : 09 Dec 2020 10:52
 Operator : DD\AJ
 Sample : PB133432BL
 Misc :
 ALS Vial : 8 Sample Multiplier: 1

Instrument :
 ECD_D
 ClientSampleId :
 PBLK432

Integration File signal 1: autoint1.e
 Integration File signal 2: autoint2.e
 Quant Time: Dec 11 02:34:45 2020
 Quant Method : Z:\pestpcbsrv\HPCHEM1\ECD_D\Method\PD120420CLP.M
 Quant Title : GC Extractables
 QLast Update : Fri Dec 04 03:58:39 2020
 Response via : Initial Calibration
 Integrator: ChemStation

Volume Inj. : 1 µl
 Signal #1 Phase : ZB-MR2 Signal #2 Phase: ZB-MR1
 Signal #1 Info : 30M x 0.32mm x0.2 Signal #2 Info : 30M x 0.32mm x 0.50µm

Compound	RT#1	RT#2	Resp#1	Resp#2	ng/ml	ng/ml

System Monitoring Compounds						
1) SA Tetrachlo...	3.501	4.022	24520622	94306784	20.988	23.976
27) SA Decachlor...	8.291	9.109	60864763	144.0E6	40.828	44.498

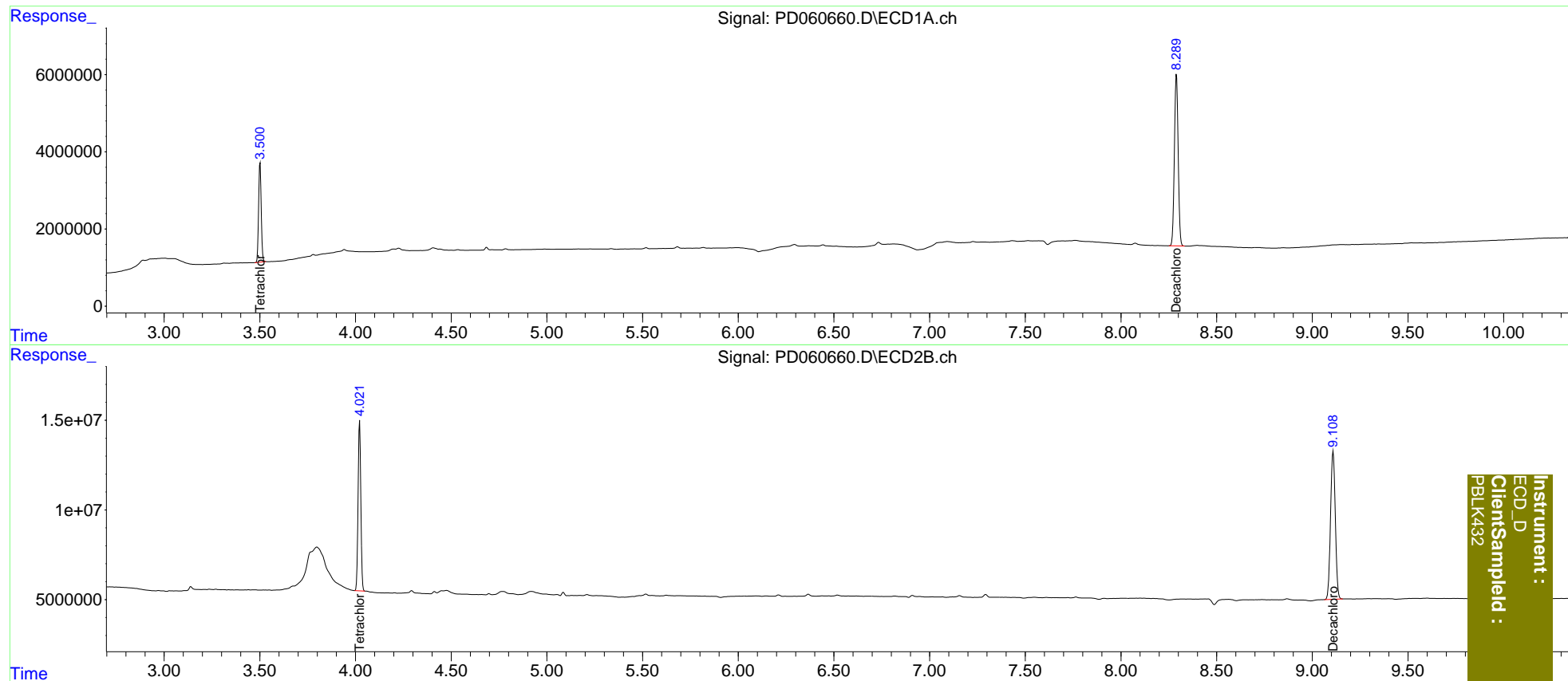
Target Compounds

(f)=RT Delta > 1/2 Window (#)=Amounts differ by > 25% (m)=manual int.

Data Path : Z:\pestpcbsrv\HPCHEM1\ECD_D\Data\PD120920\
 Data File : PD060660.D
 Signal(s) : Signal #1: ECD1A.ch Signal #2: ECD2B.ch
 Acq On : 09 Dec 2020 10:52
 Operator : DD\AJ
 Sample : PB133432BL
 Misc :
 ALS Vial : 8 Sample Multiplier: 1

Integration File signal 1: autoint1.e
 Integration File signal 2: autoint2.e
 Quant Time: Dec 11 02:34:45 2020
 Quant Method : Z:\pestpcbsrv\HPCHEM1\ECD_D\Method\PD120420CLP.M
 Quant Title : GC Extractables
 QLast Update : Fri Dec 04 03:58:39 2020
 Response via : Initial Calibration
 Integrator: ChemStation

Volume Inj. : 1 µl
 Signal #1 Phase : ZB-MR2 Signal #2 Phase: ZB-MR1
 Signal #1 Info : 30M x 0.32mm x0.2 Signal #2 Info : 30M x 0.32mm x 0.50µm



Instrument :
 ECD_D
 ClientSampleId :
 PBLK432