

Data Path : Z:\pestpcbsrv\HPCHEM1\ECD_D\Data\PD121018\
 Data File : PD050702.D
 Signal(s) : Signal #1: ECD1A.CH Signal #2: ECD2B.CH
 Acq On : 10 Dec 2018 16:48
 Operator : AJ\SJ
 Sample : PB115481BS
 Misc :
 ALS Vial : 13 Sample Multiplier: 1

Instrument :
 ECD_D
 ClientSampleID :

Integration File signal 1: autoint1.e
 Integration File signal 2: autoint2.e
 Quant Time: Dec 11 03:48:33 2018
 Quant Method : Z:\pestpcbsrv\HPCHEM1\ECD_D\Method\PD111618.M
 Quant Title : GC Extractables
 QLast Update : Fri Nov 16 02:59:21 2018
 Response via : Initial Calibration
 Integrator: ChemStation 6890 Scale Mode: Large solvent peaks clipped

Volume Inj. : 2 µl
 Signal #1 Phase : ZB-MR2 Signal #2 Phase: ZB-MR1
 Signal #1 Info : 30M x 0.32mm x0.2 Signal #2 Info : 30M x 0.32mm x 0.50µm

	Compound	RT#1	RT#2	Resp#1	Resp#2	ng/ml	ng/ml

System Monitoring Compounds							
1)	SA Tetrachlo...	3.227	4.044	29271981	546.6E6	20.115	19.844
28)	SA Decachlor...	7.832	9.151	33966372	444.0E6	22.945	21.934
Target Compounds							
2)	A alpha-BHC	3.647	4.436	122.4E6	1866.4E6	52.139	43.975
3)	MA gamma-BHC...	3.916	4.723	115.0E6	1712.5E6	49.289	45.014
4)	MA Heptachlor	4.195	5.237	117.0E6	1732.4E6	53.046	45.709
5)	MB Aldrin	4.427	5.544	119.4E6	1673.9E6	52.119	46.810
6)	B beta-BHC	4.161	4.892	44146635	745.3E6	48.288	44.920
7)	B delta-BHC	4.350	5.111	100.8E6	1473.4E6	46.230	39.463
8)	Heptachlo...	4.854	5.931	108.6E6	1483.2E6	51.128	46.661
9)	A Endosulfan I	5.176	6.290	101.2E6	1359.0E6	50.201	47.878
10)	B gamma-Chl...	5.072	6.166	111.3E6	1499.3E6	50.490	47.312
11)	B alpha-Chl...	5.128	6.239	109.3E6	1454.3E6	50.144	47.831
12)	B 4,4'-DDE	5.298	6.394	103.2E6	1426.8E6	50.375	48.522
13)	MA Dieldrin	5.412	6.548	111.2E6	1444.0E6	50.357	47.919
14)	MA Endrin	5.659	6.766	98732118	1170.6E6	51.388	48.568
15)	B Endosulfa...	5.928	6.974	93828990	1180.2E6	49.222	48.354
16)	A 4,4'-DDD	5.799	6.885	83660303	1133.1E6	48.809	49.622
17)	MA 4,4'-DDT	6.031	7.185	88502236	1079.9E6	49.947	52.320
18)	B Endrin al...	6.096	7.099	75553747	976.0E6	49.838	48.263
19)	B Endosulfa...	6.304	7.323	88669757	1109.1E6	47.805	45.526
20)	A Methoxychlor	6.577	7.643	46948483	576.7E6	49.185	51.866
21)	B Endrin ke...	6.780	7.796	107.9E6	1165.0E6	49.922	50.266
23)	Chlordane-1	4.081	5.111	261184	1473.4E6	3.878	1064.400 #
24)	Chlordane-2	0.000	5.544	0	1673.9E6	N.D.	1341.890 #
25)	Chlordane-3	5.072	6.166	111.3E6	1499.3E6	478.853	372.190
26)	Chlordane-4	5.128	6.239	109.3E6	1454.3E6	490.755	317.679 #
27)	Chlordane-5	5.928	7.099	93828990	976.0E6	1234.663	1068.045

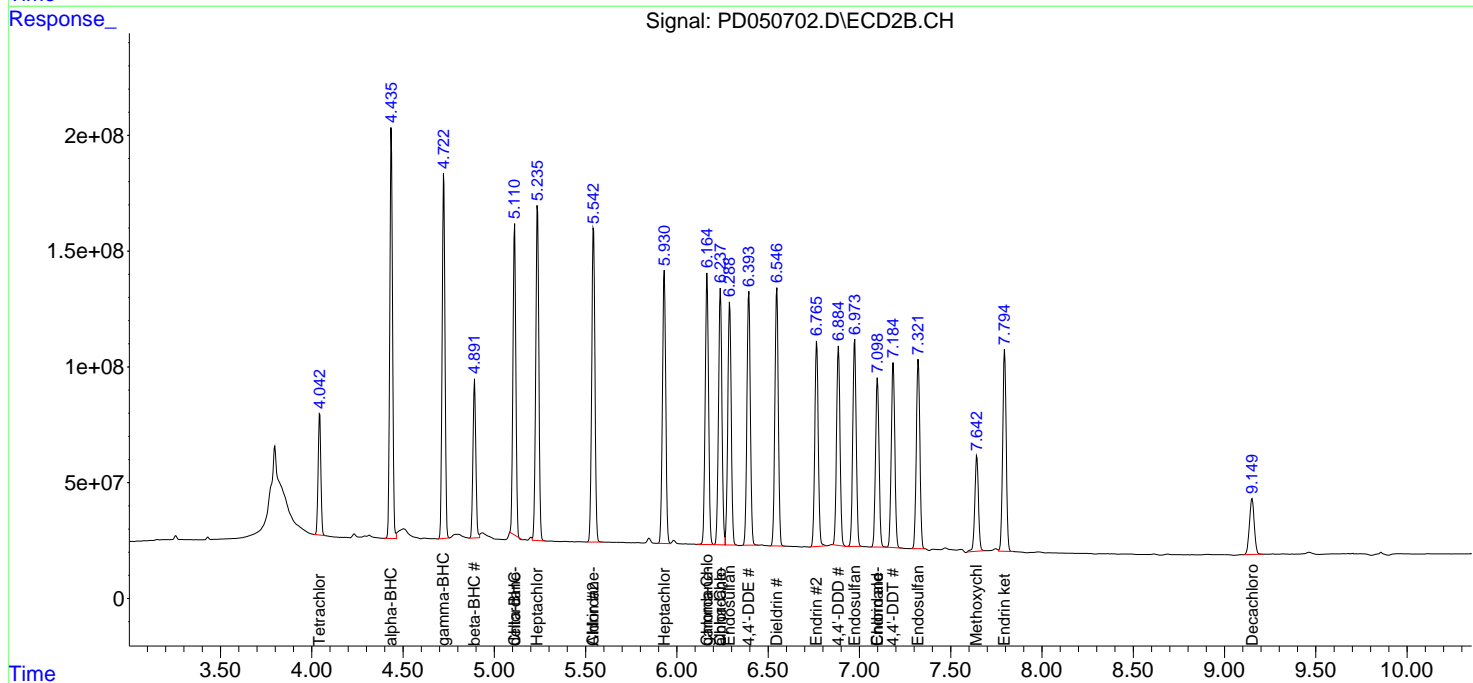
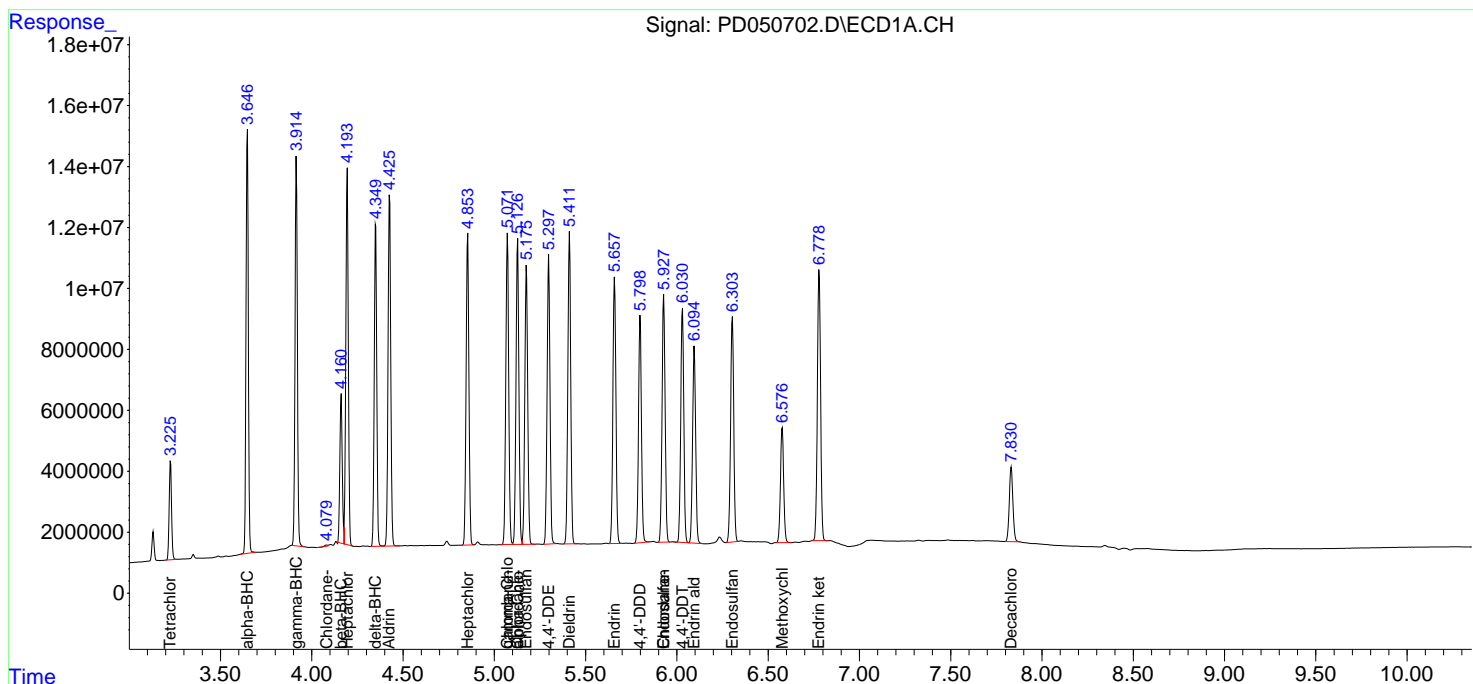
(f)=RT Delta > 1/2 Window (#)=Amounts differ by > 25% (m)=manual int.

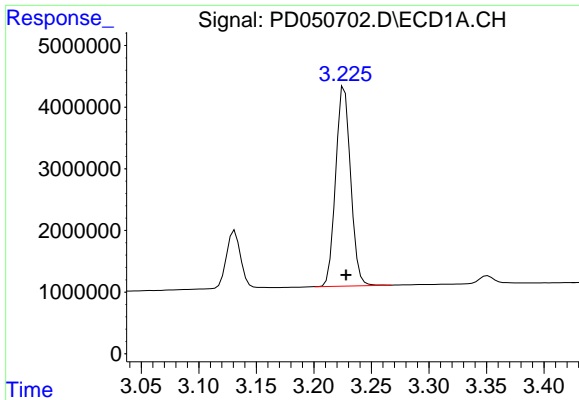
Data Path : Z:\pestpcbsrv\HPCHEM1\ECD_D\Data\PD121018\
 Data File : PD050702.D
 Signal(s) : Signal #1: ECD1A.CH Signal #2: ECD2B.CH
 Acq On : 10 Dec 2018 16:48
 Operator : AJ\SJ
 Sample : PB115481BS
 Misc :
 ALS Vial : 13 Sample Multiplier: 1

Instrument :
 ECD_D
 ClientSampled :

Integration File signal 1: autoint1.e
 Integration File signal 2: autoint2.e
 Quant Time: Dec 11 03:48:33 2018
 Quant Method : Z:\pestpcbsrv\HPCHEM1\ECD_D\Method\PD111618.M
 Quant Title : GC Extractables
 QLast Update : Fri Nov 16 02:59:21 2018
 Response via : Initial Calibration
 Integrator: ChemStation 6890 Scale Mode: Large solvent peaks clipped

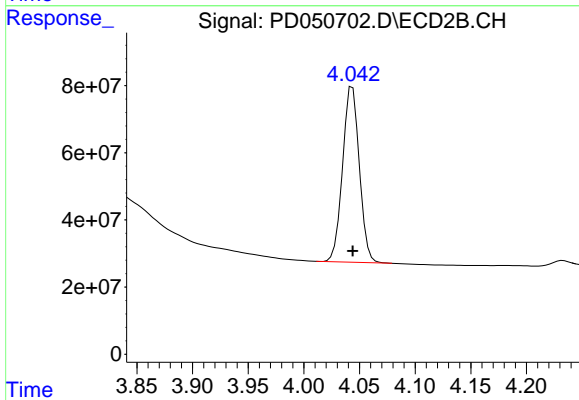
Volume Inj. : 2 µl
 Signal #1 Phase : ZB-MR2 Signal #2 Phase: ZB-MR1
 Signal #1 Info : 30M x 0.32mm x0.2 Signal #2 Info : 30M x 0.32mm x 0.50µm



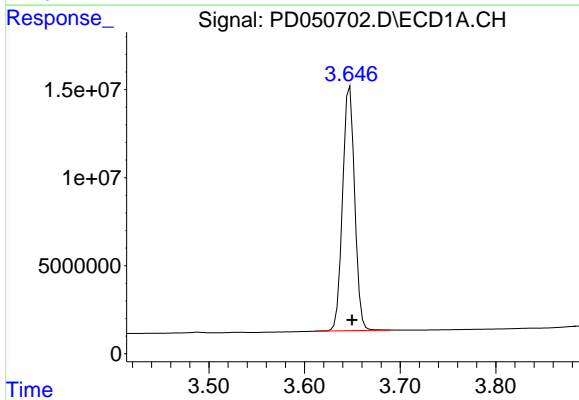


#1 Tetrachloro-m-xylene
 R.T.: 3.227 min
 Delta R.T.: -0.001 min
 Response: 29271981
 Conc: 20.12 ng/ml

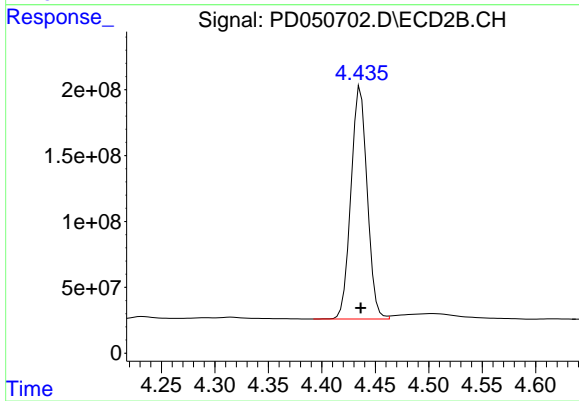
Instrument :
 ECD_D
 ClientSampleId :



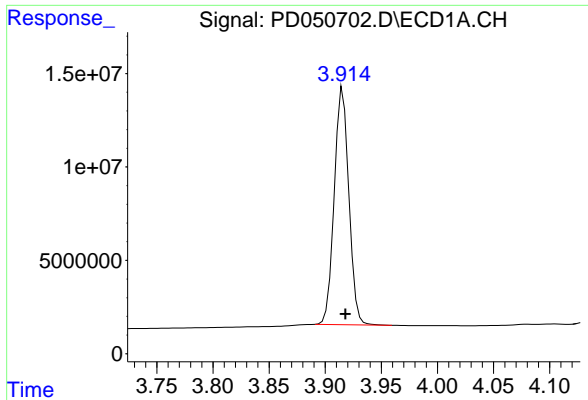
#1 Tetrachloro-m-xylene
 R.T.: 4.044 min
 Delta R.T.: 0.000 min
 Response: 546567564
 Conc: 19.84 ng/ml



#2 alpha-BHC
 R.T.: 3.647 min
 Delta R.T.: -0.002 min
 Response: 122401538
 Conc: 52.14 ng/ml

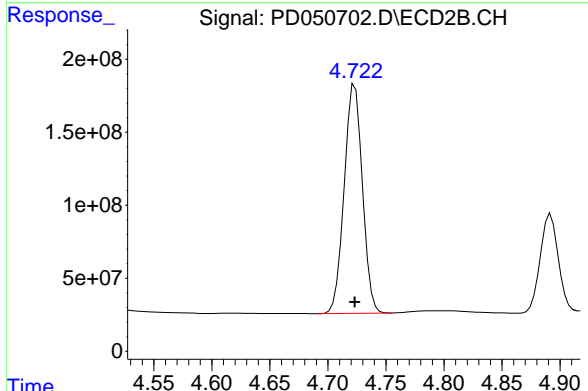


#2 alpha-BHC
 R.T.: 4.436 min
 Delta R.T.: 0.000 min
 Response: 1866380973
 Conc: 43.98 ng/ml

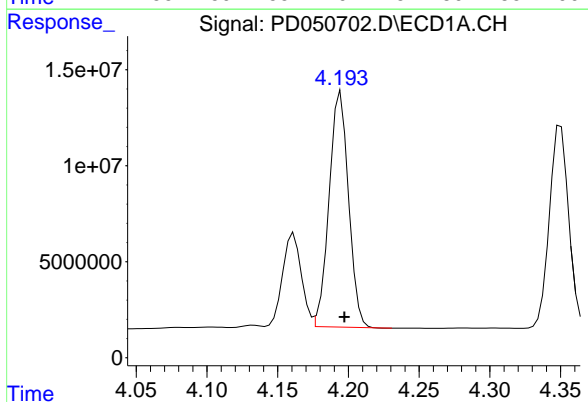


#3 gamma-BHC (Lindane)
 R.T.: 3.916 min
 Delta R.T.: -0.002 min
 Response: 115002797
 Conc: 49.29 ng/ml

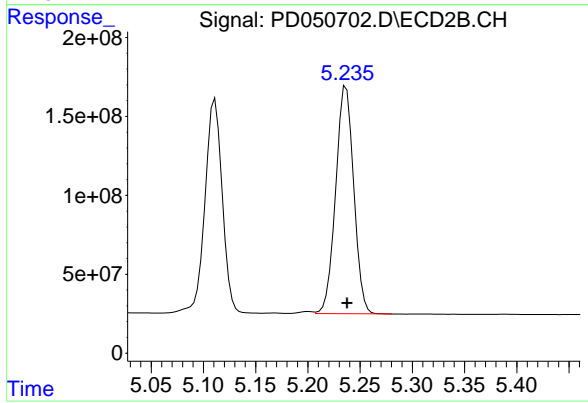
Instrument :
 ECD_D
 ClientSampled :



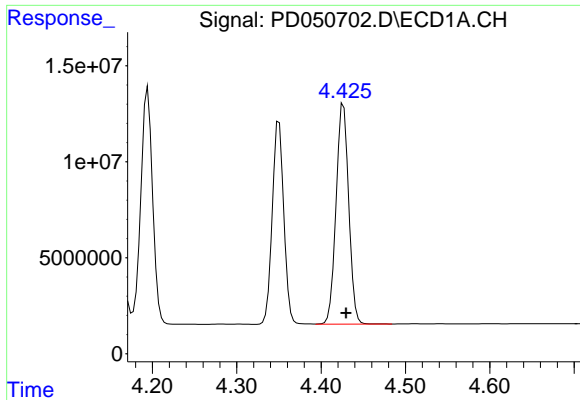
#3 gamma-BHC (Lindane)
 R.T.: 4.723 min
 Delta R.T.: 0.000 min
 Response: 1712469043
 Conc: 45.01 ng/ml



#4 Heptachlor
 R.T.: 4.195 min
 Delta R.T.: -0.003 min
 Response: 117046714
 Conc: 53.05 ng/ml

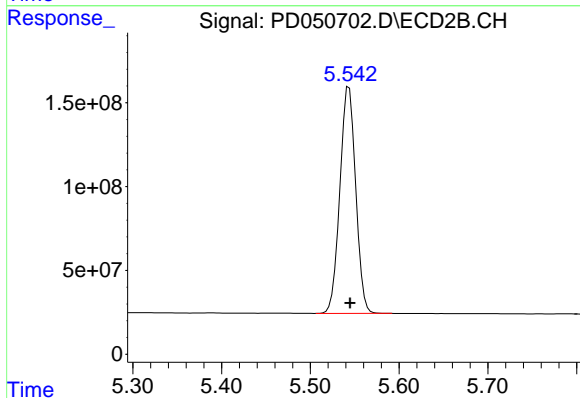


#4 Heptachlor
 R.T.: 5.237 min
 Delta R.T.: 0.000 min
 Response: 1732393255
 Conc: 45.71 ng/ml

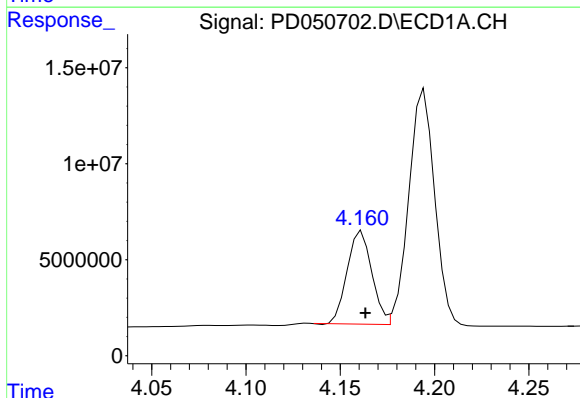


#5 Aldrin
 R.T.: 4.427 min
 Delta R.T.: -0.003 min
 Response: 119445676
 Conc: 52.12 ng/ml

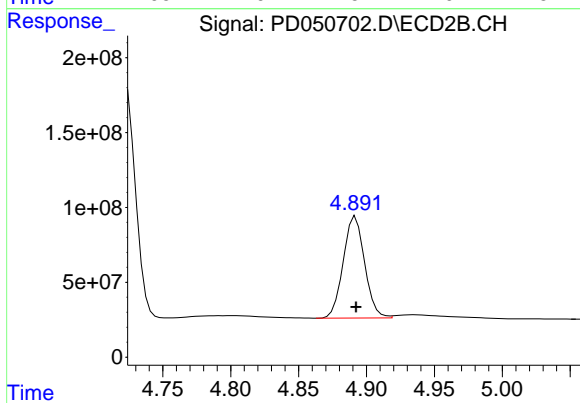
Instrument :
 ECD_D
 ClientSampleId :



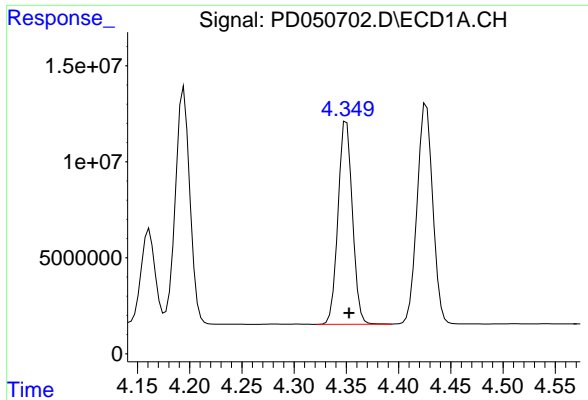
#5 Aldrin
 R.T.: 5.544 min
 Delta R.T.: -0.001 min
 Response: 1673926179
 Conc: 46.81 ng/ml



#6 beta-BHC
 R.T.: 4.161 min
 Delta R.T.: -0.002 min
 Response: 44146635
 Conc: 48.29 ng/ml

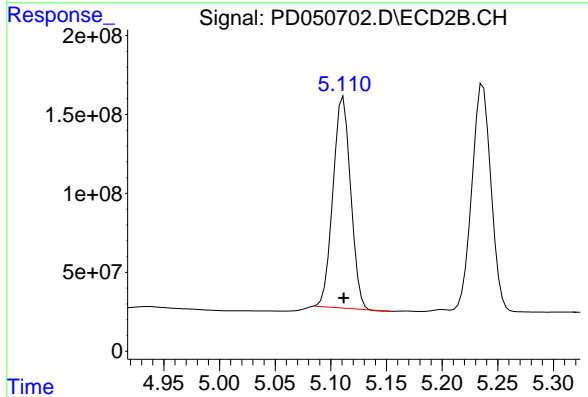


#6 beta-BHC
 R.T.: 4.892 min
 Delta R.T.: 0.000 min
 Response: 745264150
 Conc: 44.92 ng/ml

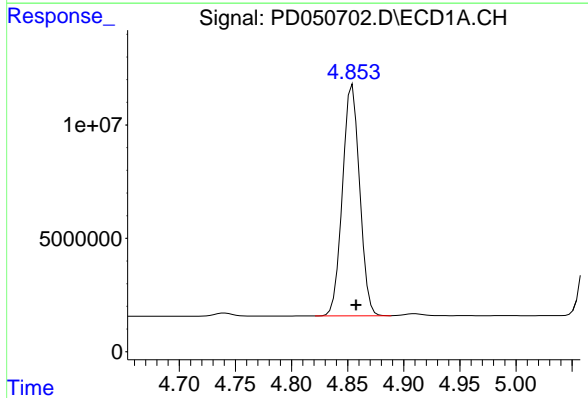


#7 delta-BHC
 R.T.: 4.350 min
 Delta R.T.: -0.002 min
 Response: 100788536
 Conc: 46.23 ng/ml

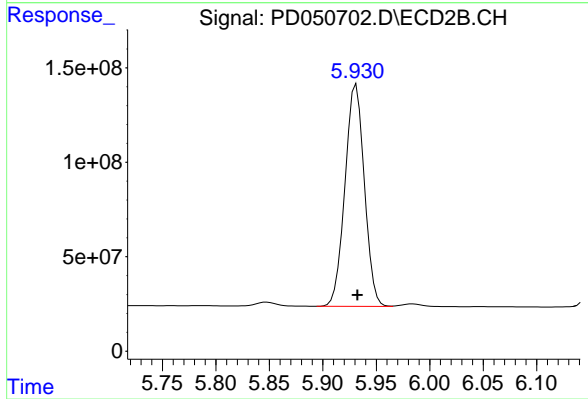
Instrument :
 ECD_D
 ClientSampled :



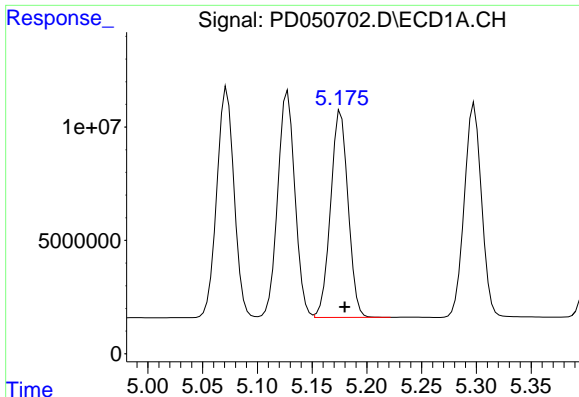
#7 delta-BHC
 R.T.: 5.111 min
 Delta R.T.: 0.000 min
 Response: 1473354775
 Conc: 39.46 ng/ml



#8 Heptachlor epoxide
 R.T.: 4.854 min
 Delta R.T.: -0.003 min
 Response: 108633460
 Conc: 51.13 ng/ml



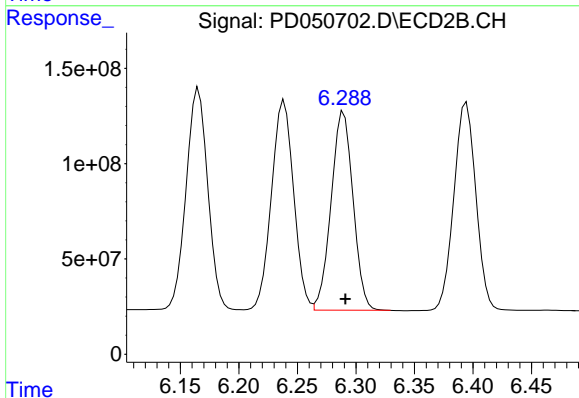
#8 Heptachlor epoxide
 R.T.: 5.931 min
 Delta R.T.: -0.001 min
 Response: 1483160455
 Conc: 46.66 ng/ml



#9 Endosulfan I

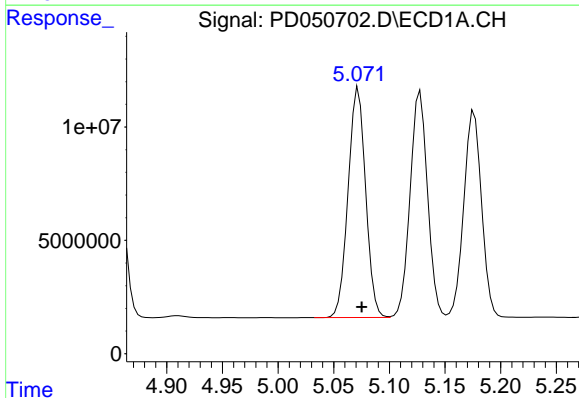
R.T.: 5.176 min
 Delta R.T.: -0.004 min
 Response: 101154161
 Conc: 50.20 ng/ml

Instrument :
 ECD_D
 ClientSampled :



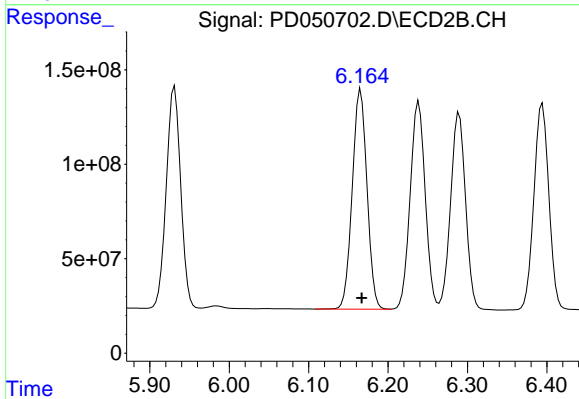
#9 Endosulfan I

R.T.: 6.290 min
 Delta R.T.: -0.001 min
 Response: 1358979640
 Conc: 47.88 ng/ml



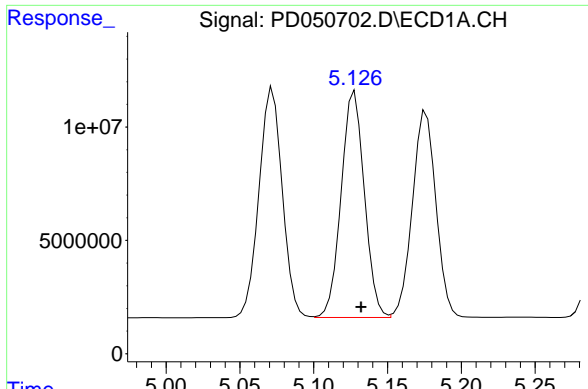
#10 gamma-Chlordane

R.T.: 5.072 min
 Delta R.T.: -0.003 min
 Response: 111261342
 Conc: 50.49 ng/ml



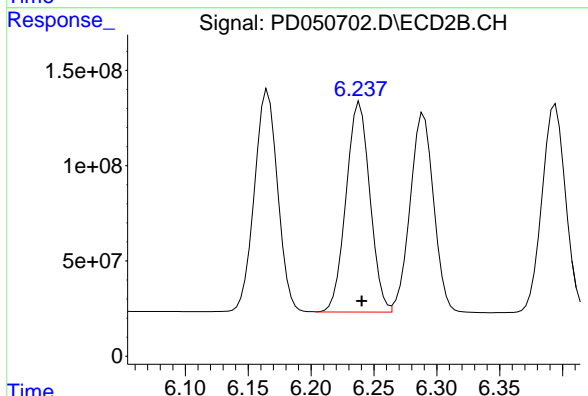
#10 gamma-Chlordane

R.T.: 6.166 min
 Delta R.T.: -0.001 min
 Response: 1499332504
 Conc: 47.31 ng/ml

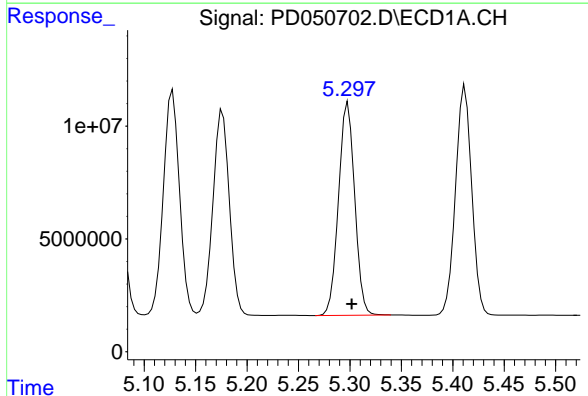


#11 alpha-Chlordane
 R.T.: 5.128 min
 Delta R.T.: -0.004 min
 Response: 109259665
 Conc: 50.14 ng/ml

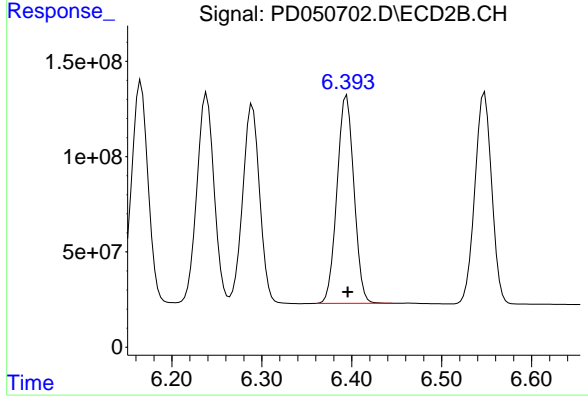
Instrument :
 ECD_D
 ClientSampled :



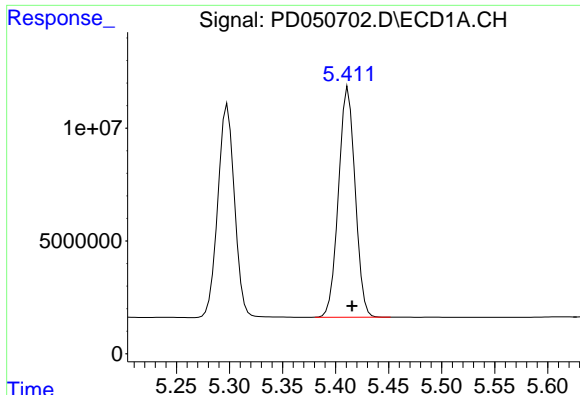
#11 alpha-Chlordane
 R.T.: 6.239 min
 Delta R.T.: -0.002 min
 Response: 1454256790
 Conc: 47.83 ng/ml



#12 4,4'-DDE
 R.T.: 5.298 min
 Delta R.T.: -0.004 min
 Response: 103240542
 Conc: 50.38 ng/ml

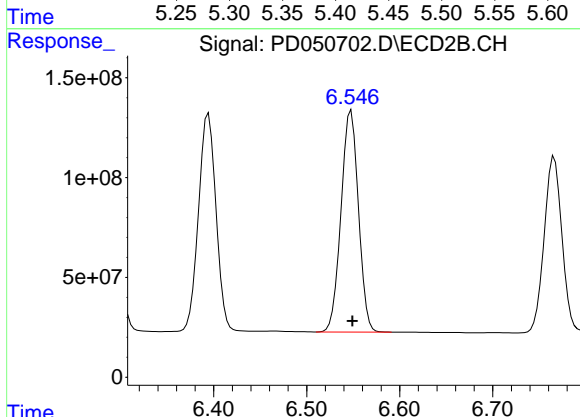


#12 4,4'-DDE
 R.T.: 6.394 min
 Delta R.T.: -0.001 min
 Response: 1426817685
 Conc: 48.52 ng/ml

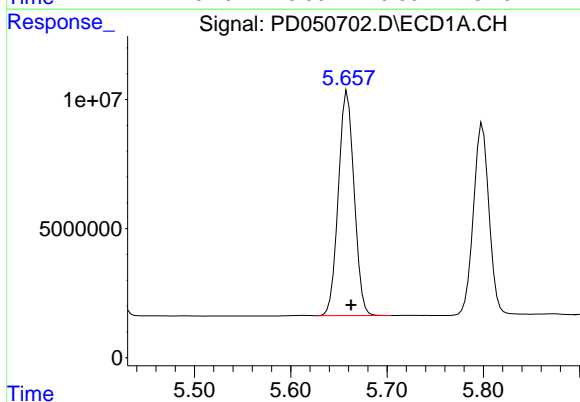


#13 Dieldrin
 R.T.: 5.412 min
 Delta R.T.: -0.004 min
 Response: 111205318
 Conc: 50.36 ng/ml

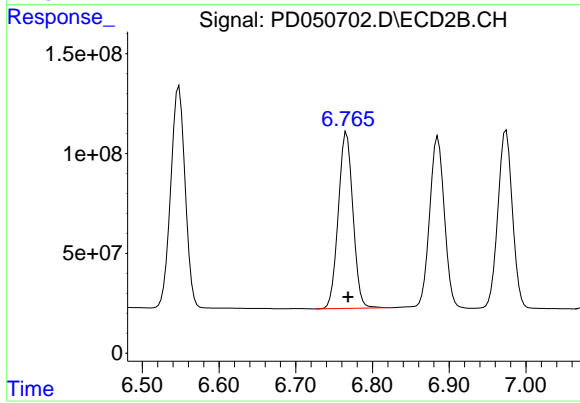
Instrument :
 ECD_D
 ClientSampled :



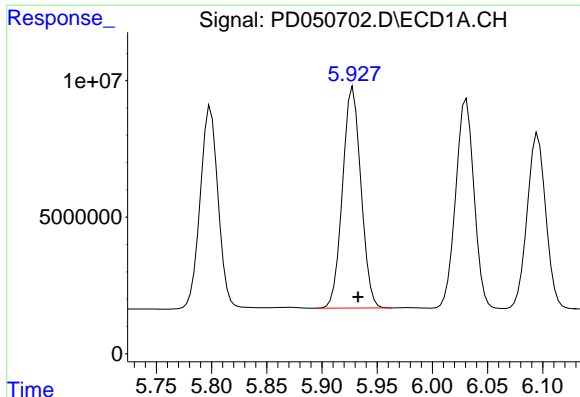
#13 Dieldrin
 R.T.: 6.548 min
 Delta R.T.: -0.001 min
 Response: 1443963234
 Conc: 47.92 ng/ml



#14 Endrin
 R.T.: 5.659 min
 Delta R.T.: -0.004 min
 Response: 98732118
 Conc: 51.39 ng/ml



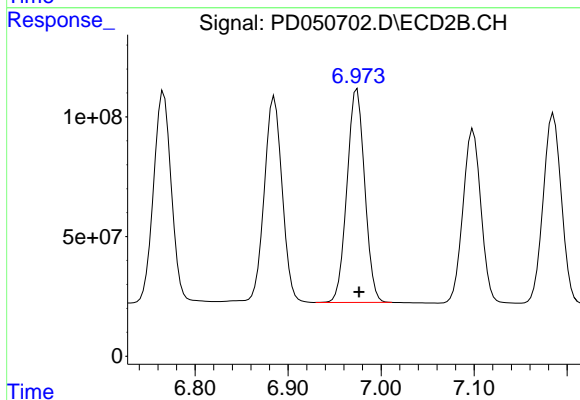
#14 Endrin
 R.T.: 6.766 min
 Delta R.T.: -0.002 min
 Response: 1170596482
 Conc: 48.57 ng/ml



#15 Endosulfan II

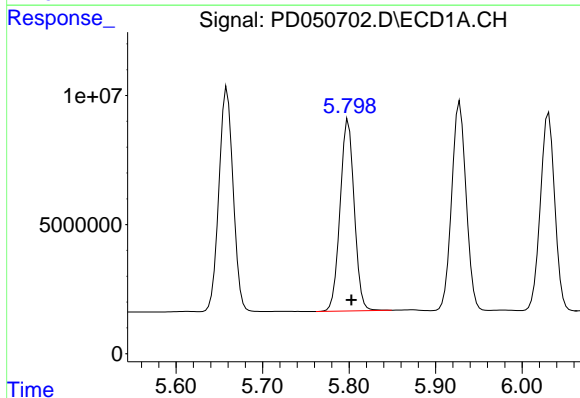
R.T.: 5.928 min
Delta R.T.: -0.004 min
Response: 93828990
Conc: 49.22 ng/ml

Instrument :
ECD_D
ClientSampleId :



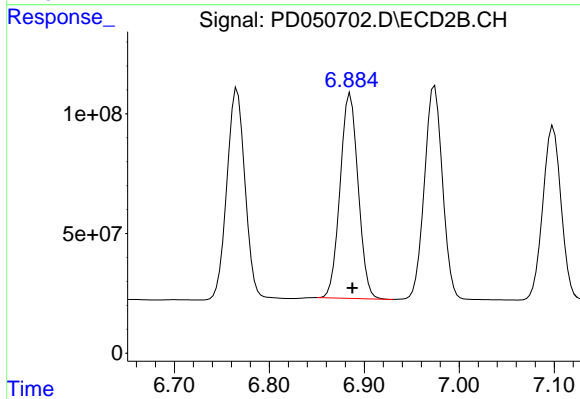
#15 Endosulfan II

R.T.: 6.974 min
Delta R.T.: -0.002 min
Response: 1180205229
Conc: 48.35 ng/ml



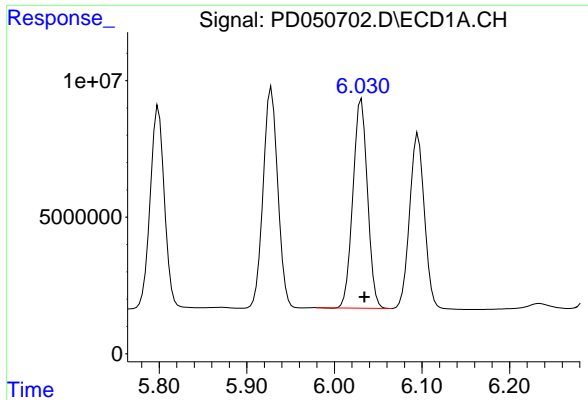
#16 4,4'-DDD

R.T.: 5.799 min
Delta R.T.: -0.004 min
Response: 83660303
Conc: 48.81 ng/ml



#16 4,4'-DDD

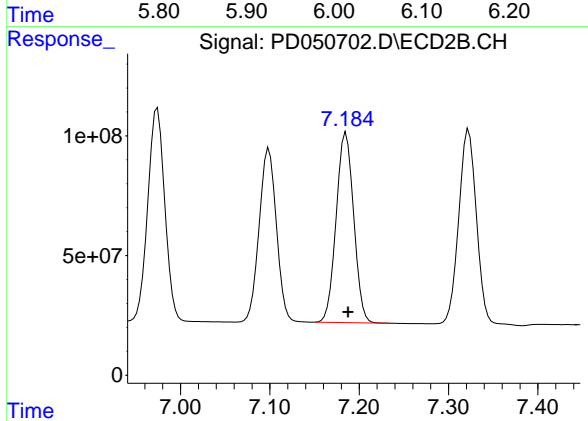
R.T.: 6.885 min
Delta R.T.: -0.002 min
Response: 1133100631
Conc: 49.62 ng/ml



#17 4,4'-DDT

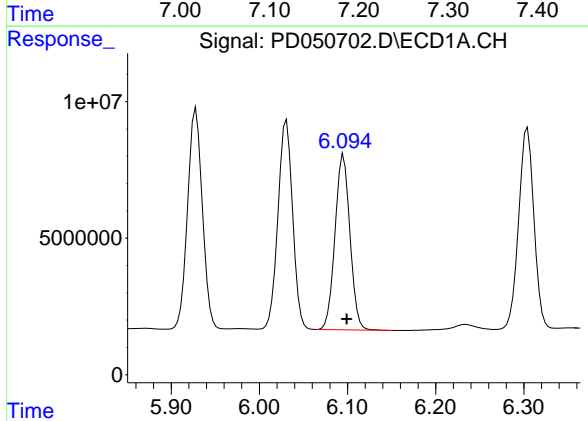
R.T.: 6.031 min
Delta R.T.: -0.003 min
Response: 88502236
Conc: 49.95 ng/ml

Instrument :
ECD_D
ClientSampleId :



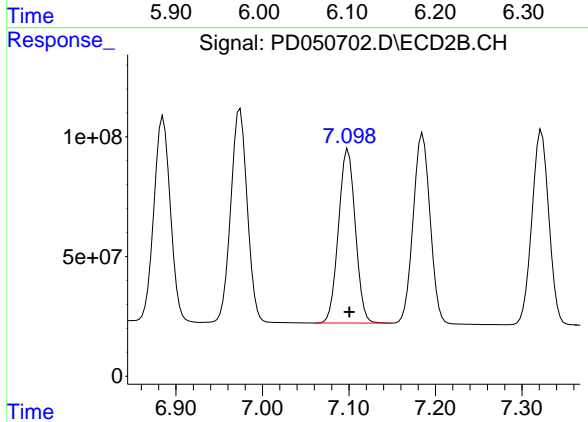
#17 4,4'-DDT

R.T.: 7.185 min
Delta R.T.: -0.002 min
Response: 1079864521
Conc: 52.32 ng/ml



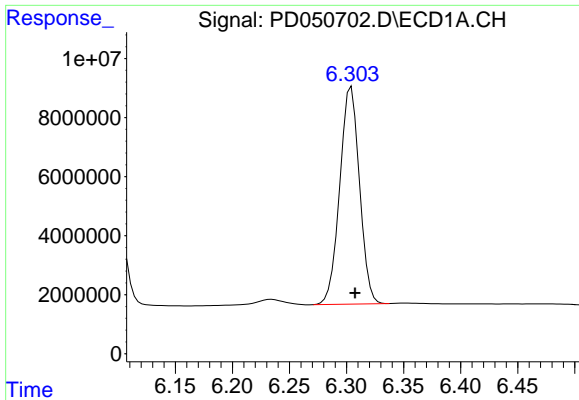
#18 Endrin aldehyde

R.T.: 6.096 min
Delta R.T.: -0.004 min
Response: 75553747
Conc: 49.84 ng/ml



#18 Endrin aldehyde

R.T.: 7.099 min
Delta R.T.: -0.001 min
Response: 975963454
Conc: 48.26 ng/ml



#19 Endosulfan Sulfate

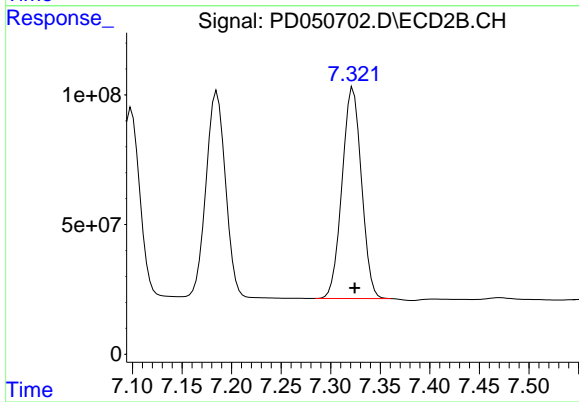
R.T.: 6.304 min

Delta R.T.: -0.003 min

Response: 88669757

Conc: 47.80 ng/ml

Instrument :
ECD_D
ClientSampleId :



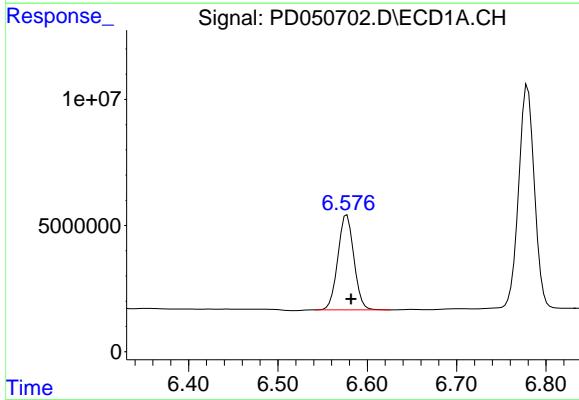
#19 Endosulfan Sulfate

R.T.: 7.323 min

Delta R.T.: -0.002 min

Response: 1109143697

Conc: 45.53 ng/ml



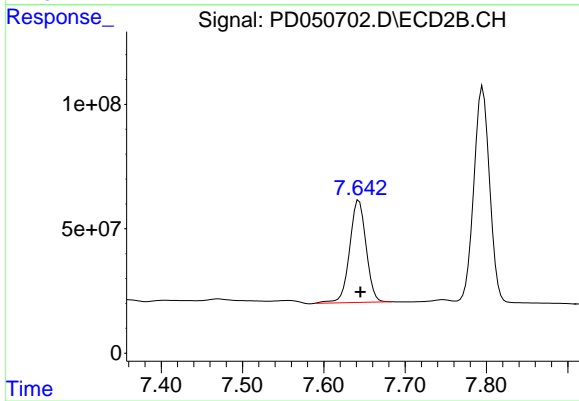
#20 Methoxychlor

R.T.: 6.577 min

Delta R.T.: -0.004 min

Response: 46948483

Conc: 49.19 ng/ml



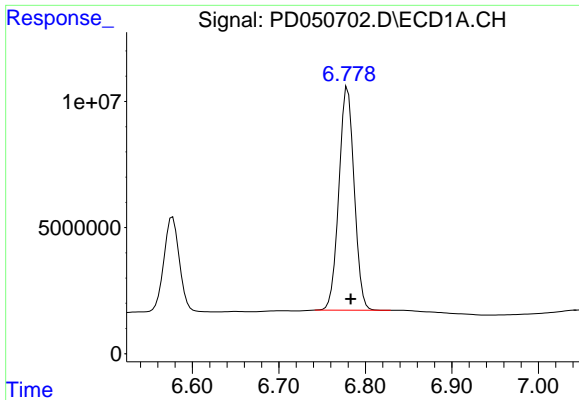
#20 Methoxychlor

R.T.: 7.643 min

Delta R.T.: -0.002 min

Response: 576686710

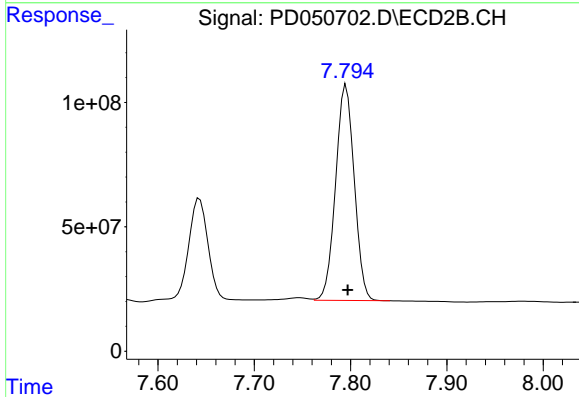
Conc: 51.87 ng/ml



#21 Endrin ketone

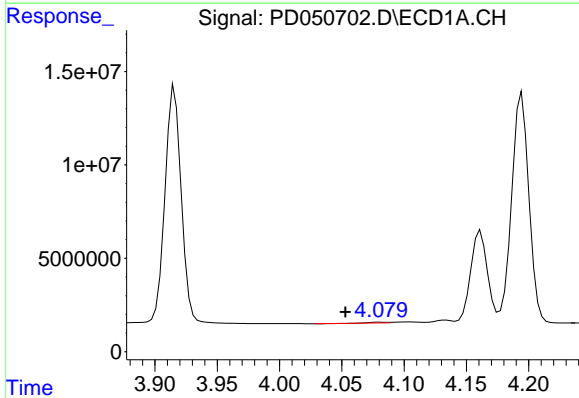
R.T.: 6.780 min
 Delta R.T.: -0.004 min
 Response: 107912930
 Conc: 49.92 ng/ml

Instrument :
 ECD_D
 ClientSampleId :



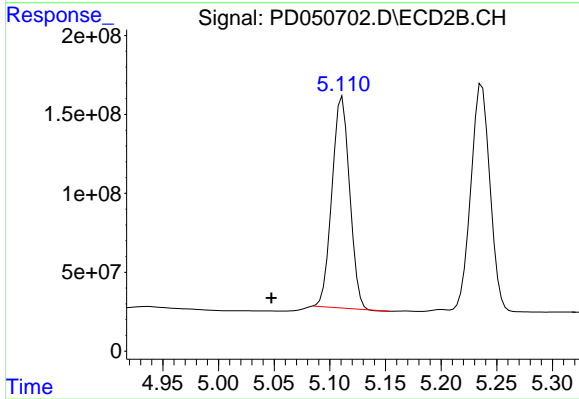
#21 Endrin ketone

R.T.: 7.796 min
 Delta R.T.: -0.001 min
 Response: 1165049189
 Conc: 50.27 ng/ml



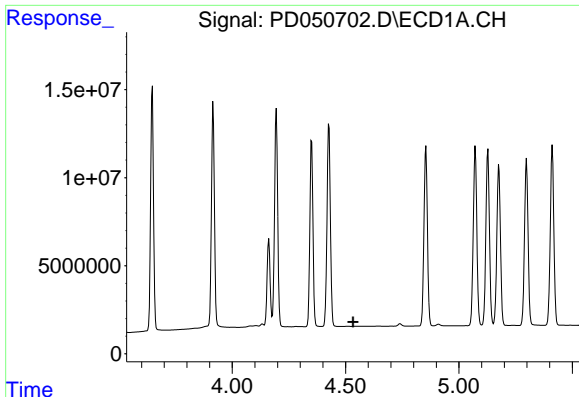
#23 Chlordane-1

R.T.: 4.081 min
 Delta R.T.: 0.028 min
 Response: 261184
 Conc: 3.88 ng/ml



#23 Chlordane-1

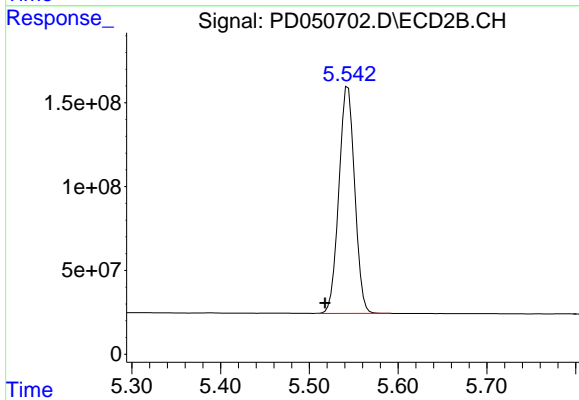
R.T.: 5.111 min
 Delta R.T.: 0.064 min
 Response: 1473354775
 Conc: 1064.40 ng/ml



#24 Chlordane-2

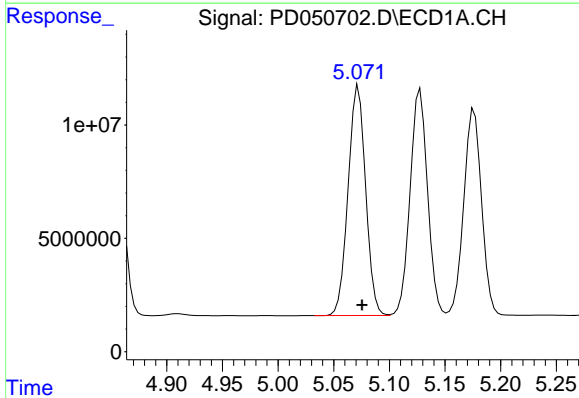
R.T.: 0.000 min
 Exp R.T.: 4.533 min
 Response: 0
 Conc: N.D.

Instrument :
 ECD_D
 ClientSampled :



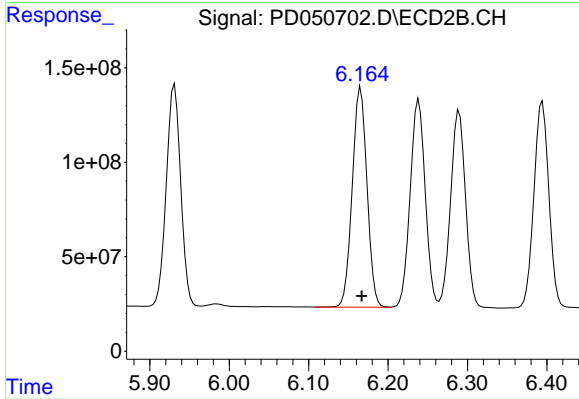
#24 Chlordane-2

R.T.: 5.544 min
 Delta R.T.: 0.026 min
 Response: 1673926179
 Conc: 1341.89 ng/ml



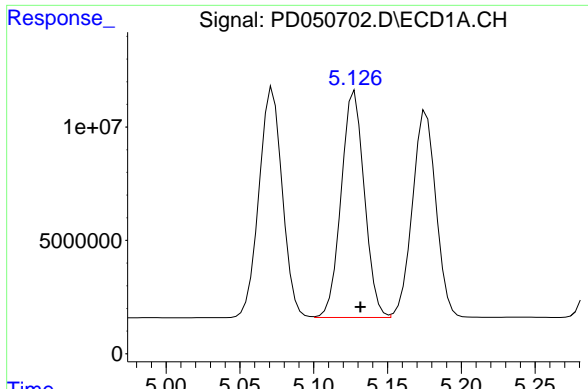
#25 Chlordane-3

R.T.: 5.072 min
 Delta R.T.: -0.003 min
 Response: 111261342
 Conc: 478.85 ng/ml



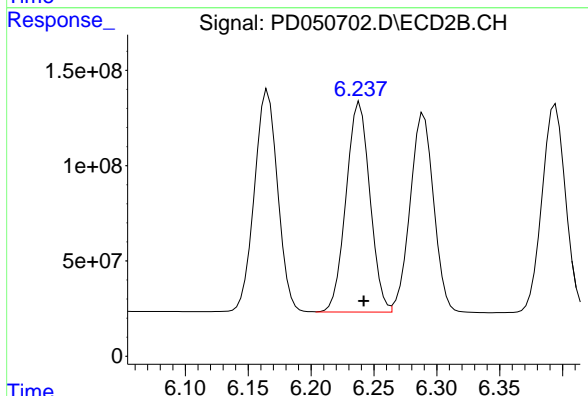
#25 Chlordane-3

R.T.: 6.166 min
 Delta R.T.: -0.001 min
 Response: 1499332504
 Conc: 372.19 ng/ml

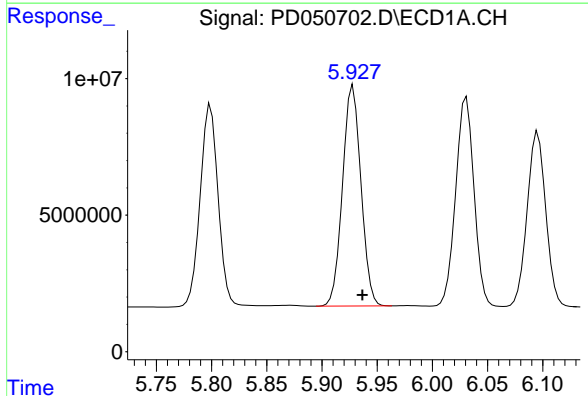


#26 Chlordane-4
 R.T.: 5.128 min
 Delta R.T.: -0.004 min
 Response: 109259665
 Conc: 490.76 ng/ml

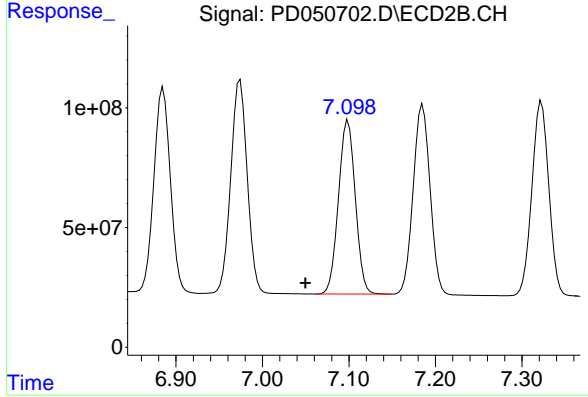
Instrument :
 ECD_D
 ClientSampled :



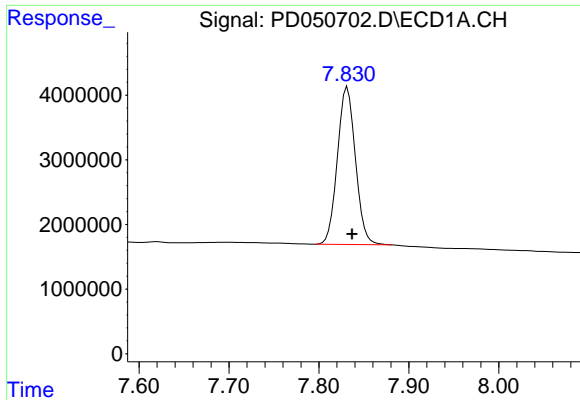
#26 Chlordane-4
 R.T.: 6.239 min
 Delta R.T.: -0.003 min
 Response: 1454256790
 Conc: 317.68 ng/ml



#27 Chlordane-5
 R.T.: 5.928 min
 Delta R.T.: -0.008 min
 Response: 93828990
 Conc: 1234.66 ng/ml



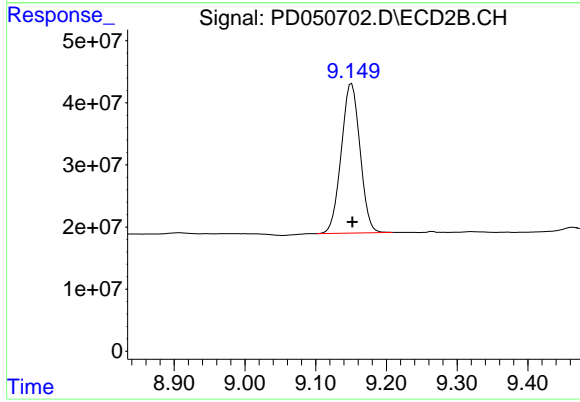
#27 Chlordane-5
 R.T.: 7.099 min
 Delta R.T.: 0.049 min
 Response: 975963454
 Conc: 1068.04 ng/ml



#28 Decachlorobiphenyl

R.T.: 7.832 min
Delta R.T.: -0.005 min
Response: 33966372
Conc: 22.94 ng/ml

Instrument :
ECD_D
ClientSampleId :



#28 Decachlorobiphenyl

R.T.: 9.151 min
Delta R.T.: 0.000 min
Response: 443981948
Conc: 21.93 ng/ml