

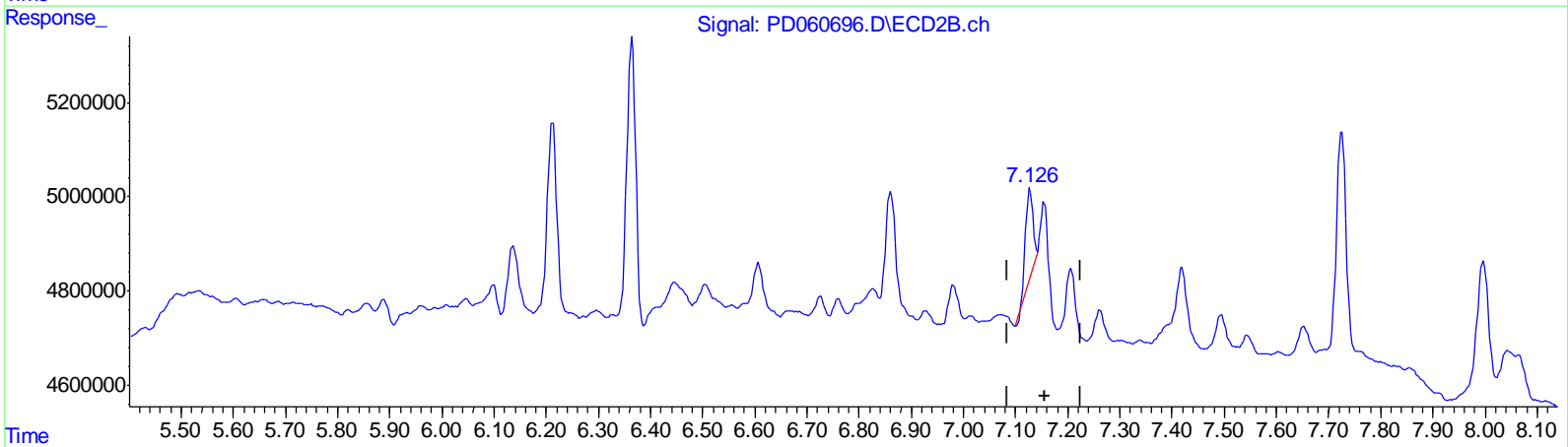
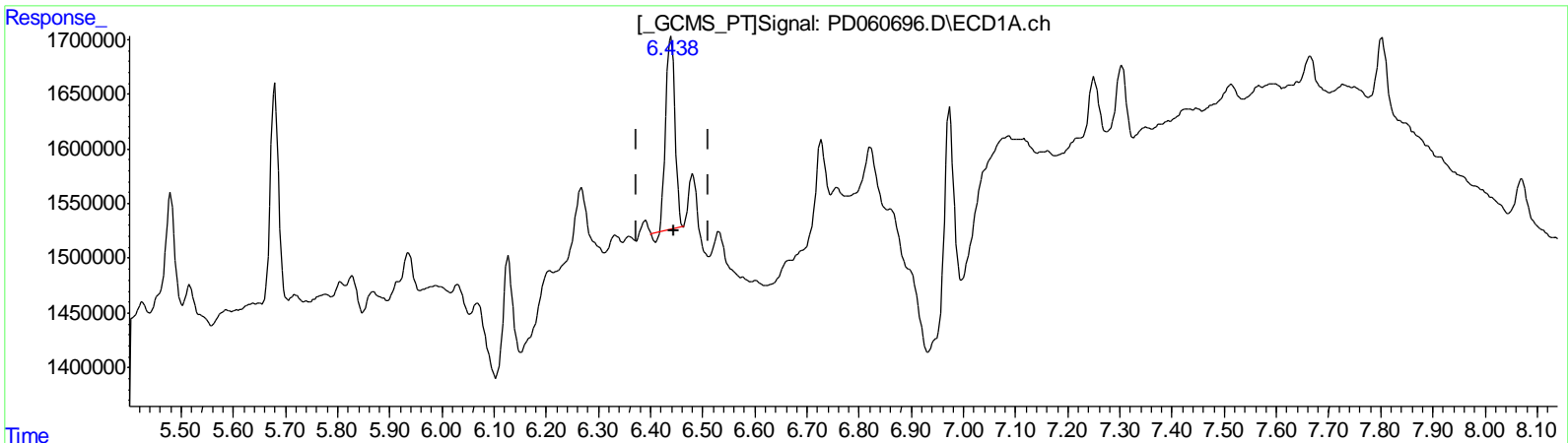
Data Path : Z:\pestpcbsrv\HPCHEM1\ECD_D\Data\PD121020\
 Data File : PD060696.D
 Signal(s) : Signal #1: ECD1A.ch Signal #2: ECD2B.ch
 Acq On : 10 Dec 2020 16:30
 Operator : DD\AJ
 Sample : L4942-02
 Misc :
 ALS Vial : 22 Sample Multiplier: 1

Instrument :
 ECD_D
ClientSampled :
 C0B78

Manual Integrations
APPROVED
 Ankita
 12/15/2020 3:15:03 PM

Integration File signal 1: autoint1.e
 Integration File signal 2: autoint2.e
 Quant Time: Dec 11 04:49:31 2020
 Quant Method : Z:\pestpcbsrv\HPCHEM1\ECD_D\Method\PD120420CLP.M
 Quant Title : GC Extractables
 QLast Update : Fri Dec 04 03:58:39 2020
 Response via : Initial Calibration
 Integrator: ChemStation

Volume Inj. : 1 µl
 Signal #1 Phase : ZB-MR2 Signal #2 Phase: ZB-MR1
 Signal #1 Info : 30M x 0.32mm x0.2 Signal #2 Info : 30M x 0.32mm x 0.50µm



QEdit

(17) 4,4'-DDT (MA)
 6.439min 1.641 ng/ml
 response 2137107

(17) 4,4'-DDT #2 (MA)
 7.128min 0.500 ng/ml
 response 1792484

(+) = Expected Retention Time

Data Path : Z:\pestpcbsrv\HPCHEM1\ECD_D\Data\PD121020\
 Data File : PD060696.D
 Signal(s) : Signal #1: ECD1A.ch Signal #2: ECD2B.ch
 Acq On : 10 Dec 2020 16:30
 Operator : DD\AJ
 Sample : L4942-02
 Misc :
 ALS Vial : 22 Sample Multiplier: 1

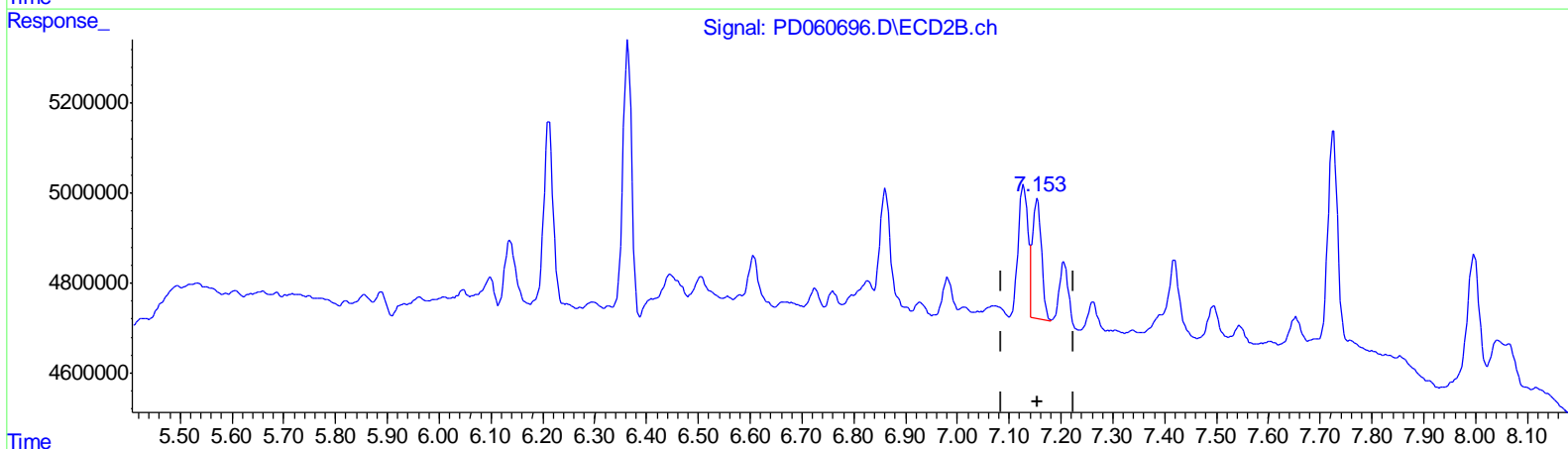
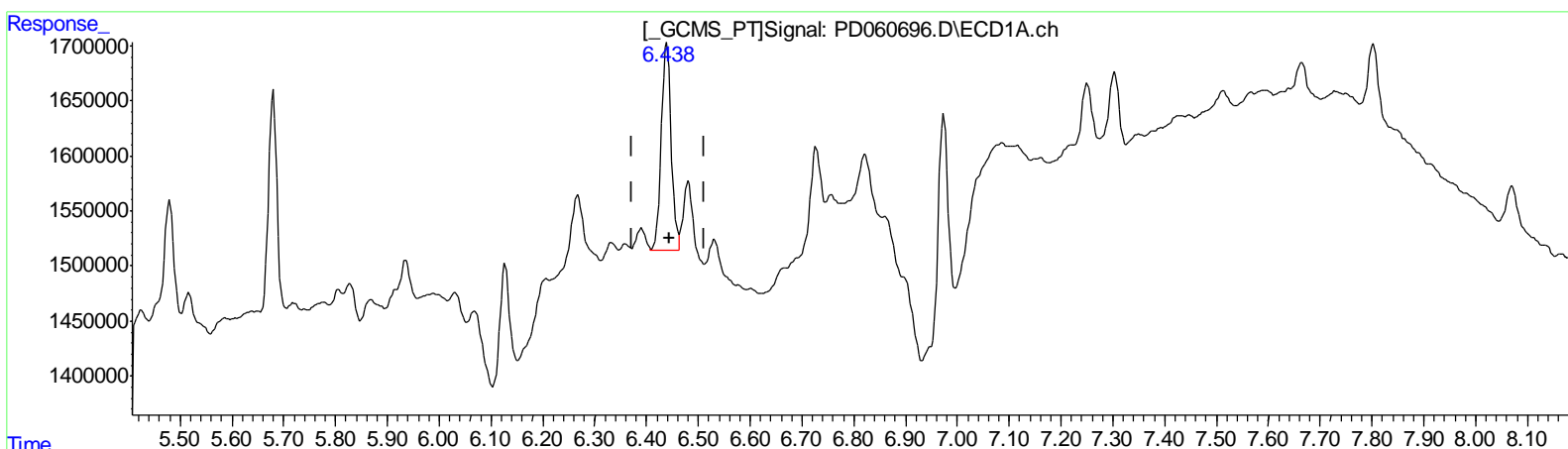
Instrument :
 ECD_D
 ClientSampled :
 C0B78

Manual Integrations
 APPROVED

Ankita
 12/15/2020 3:15:03 PM

Integration File signal 1: autoint1.e
 Integration File signal 2: autoint2.e
 Quant Time: Dec 11 04:49:31 2020
 Quant Method : Z:\pestpcbsrv\HPCHEM1\ECD_D\Method\PD120420CLP.M
 Quant Title : GC Extractables
 QLast Update : Fri Dec 04 03:58:39 2020
 Response via : Initial Calibration
 Integrator: ChemStation

Volume Inj. : 1 µl
 Signal #1 Phase : ZB-MR2 Signal #2 Phase: ZB-MR1
 Signal #1 Info : 30M x 0.32mm x0.2 Signal #2 Info : 30M x 0.32mm x 0.50µm



QEdit

(17) 4,4'-DDT (MA)
 6.438min 1.966 ng/ml m
 response 2561108

(17) 4,4'-DDT #2 (MA)
 7.153min 0.946 ng/ml m
 response 3393488

(+) = Expected Retention Time

Data Path : Z:\pestpcbsrv\HPCHEM1\ECD_D\Data\PD121020\
 Data File : PD060696.D
 Signal(s) : Signal #1: ECD1A.ch Signal #2: ECD2B.ch
 Acq On : 10 Dec 2020 16:30
 Operator : DD\AJ
 Sample : L4942-02
 Misc :
 ALS Vial : 22 Sample Multiplier: 1

Instrument :
 ECD_D
 ClientSampleId :
 C0B78

Manual Integrations
APPROVED
 Ankita
 12/15/2020 3:15:03 PM

Integration File signal 1: autoint1.e
 Integration File signal 2: autoint2.e
 Quant Time: Dec 11 04:49:31 2020
 Quant Method : Z:\pestpcbsrv\HPCHEM1\ECD_D\Method\PD120420CLP.M
 Quant Title : GC Extractables
 QLast Update : Fri Dec 04 03:58:39 2020
 Response via : Initial Calibration
 Integrator: ChemStation

Volume Inj. : 1 µl
 Signal #1 Phase : ZB-MR2 Signal #2 Phase: ZB-MR1
 Signal #1 Info : 30M x 0.32mm x0.2 Signal #2 Info : 30M x 0.32mm x 0.50µm

Compound	RT#1	RT#2	Resp#1	Resp#2	ng/ml	ng/ml

System Monitoring Compounds						
1) SA Tetrachlo...	3.501	4.021	9870390	37525074	8.449	9.540
27) SA Decachlor...	8.287	9.105	15869189	36817556	10.645	11.374
Target Compounds						
12) B 4,4'-DDE	5.680	6.364	2151355	7148773	1.429	1.619
17) MA 4,4'-DDT	6.438	7.153	2561108	3393488	1.966m	0.946m#

AJ
 12/16/20

(f)=RT Delta > 1/2 Window (#)=Amounts differ by > 25% (m)=manual int.