

Data Path : Z:\pestpcbsrv\HPCHEM1\ECD_D\Data\PD121021\
 Data File : PD067264.D
 Signal(s) : Signal #1: ECD1A.ch Signal #2: ECD2B.ch
 Acq On : 10 Dec 2021 15:32
 Operator : AR\AJ
 Sample : PB141264BSD
 Misc :
 ALS Vial : 10 Sample Multiplier: 1

Instrument :
 ECD_D
 ClientSampleId :

Integration File signal 1: autoint1.e
 Integration File signal 2: autoint2.e
 Quant Time: Dec 10 21:53:42 2021
 Quant Method : Z:\pestpcbsrv\HPCHEM1\ECD_D\Method\PD113021.M
 Quant Title : GC Extractables
 QLast Update : Tue Nov 30 17:33:19 2021
 Response via : Initial Calibration
 Integrator: ChemStation

Volume Inj. : 2 µl
 Signal #1 Phase : ZB-MR2 Signal #2 Phase: ZB-MR1
 Signal #1 Info : 30M x 0.32mm x0.2 Signal #2 Info : 30M x 0.32mm x 0.50µm

	Compound	RT#1	RT#2	Resp#1	Resp#2	ng/ml	ng/ml

System Monitoring Compounds							
1)	SA Tetrachlo...	3.441	3.965	33950321	159.8E6	16.430	22.020 #
28)	SA Decachlor...	8.167	9.031	20026430	97911804	17.675	19.476
Target Compounds							
2)	A alpha-BHC	3.878	4.359	30945138	133.5E6	9.213	12.828 #
3)	MA gamma-BHC...	4.160	4.645	29757593	116.7E6	9.260	12.250 #
4)	MA Heptachlor	4.453	5.145	30543519	103.1E6	9.388	11.457
5)	MB Aldrin	4.699	5.449	30246105	93460622	9.498	11.118
6)	B beta-BHC	4.410	4.823	14180210	55871070	10.388	12.674
7)	B delta-BHC	4.611	5.038	28281837	109.5E6	9.457	11.931 #
8)	B Heptachlo...	5.140	5.839	27971602	72945903	9.710	10.404
9)	A Endosulfan I	5.476	6.196	26050680	80891420	9.990	11.627
10)	B gamma-Chl...	5.364	6.072	28372386	84183381	9.756	11.438
11)	B alpha-Chl...	5.422	6.145	28197824	84666197	9.926	11.624
12)	B 4,4'-DDE	5.586	6.305	26614420	79647830	9.918	11.511
13)	MA Dieldrin	5.718	6.455	26635547	86308349	9.529	11.769
14)	MA Endrin	5.975	6.673	25141613	76612182	11.011	13.645
15)	B Endosulfa...	6.248	6.888	22732988	68769243	10.147	11.458
16)	A 4,4'-DDD	6.101	6.800	19497981	64283537	9.278	10.992
17)	MA 4,4'-DDT	6.340	7.098	21317389	67683422	10.075	11.340
18)	B Endrin al...	6.417	7.013	17666132	53353501	10.564	11.377
19)	B Endosulfa...	6.629	7.237	20467385	66198624	10.092	11.026
20)	A Methoxychlor	6.886	7.561	11713265	35456125	10.560	11.008
21)	B Endrin ke...	7.120	7.710	21802117	77382616	9.623	10.700
22)	Mirex	7.300	8.158	16925631	56079743	10.551	11.450
24)	Chlordane-2	0.000	5.449f	0	93460622	N.D.	350.364 #
25)	Chlordane-3	5.364	6.072	28372386	84183381	103.074	88.127
26)	Chlordane-4	5.422	6.145	28197824	84666197	123.532	76.162 #
27)	Chlordane-5	6.248	6.957	22732988	295953	250.178	1.365 #

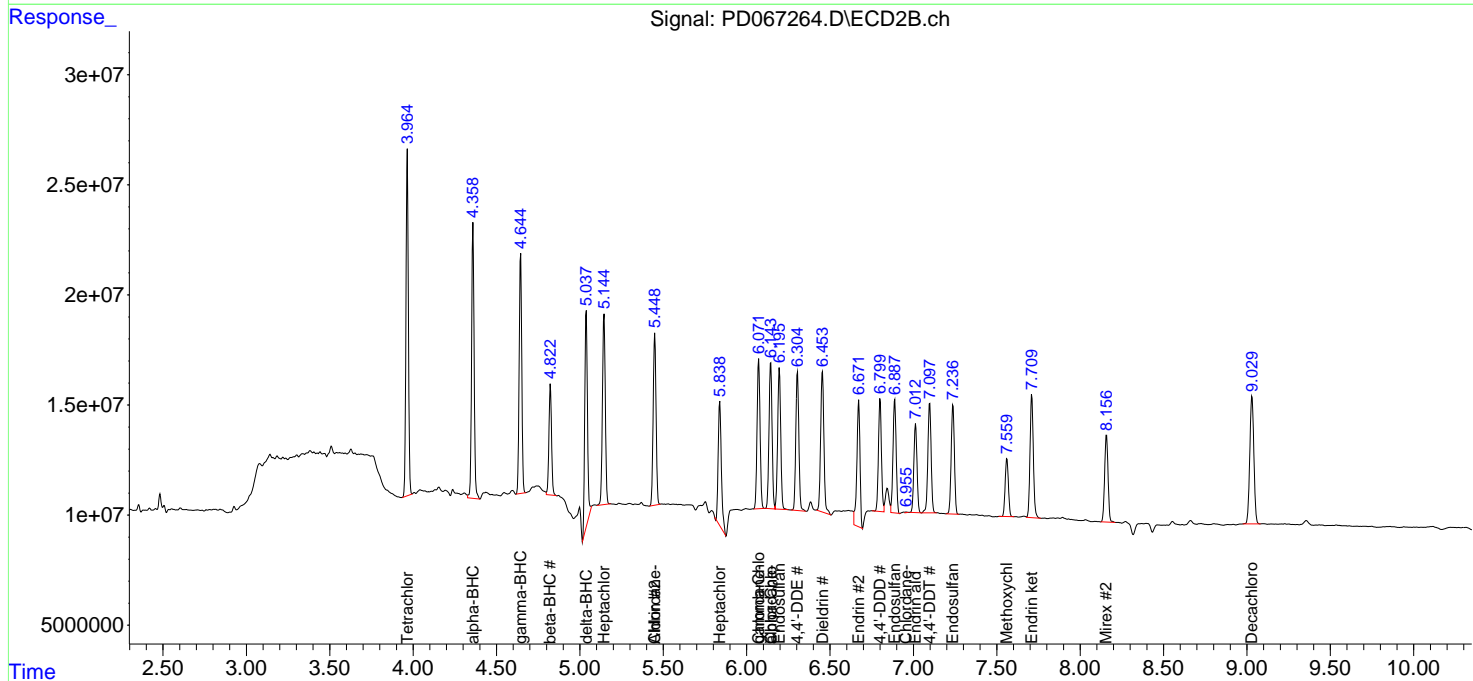
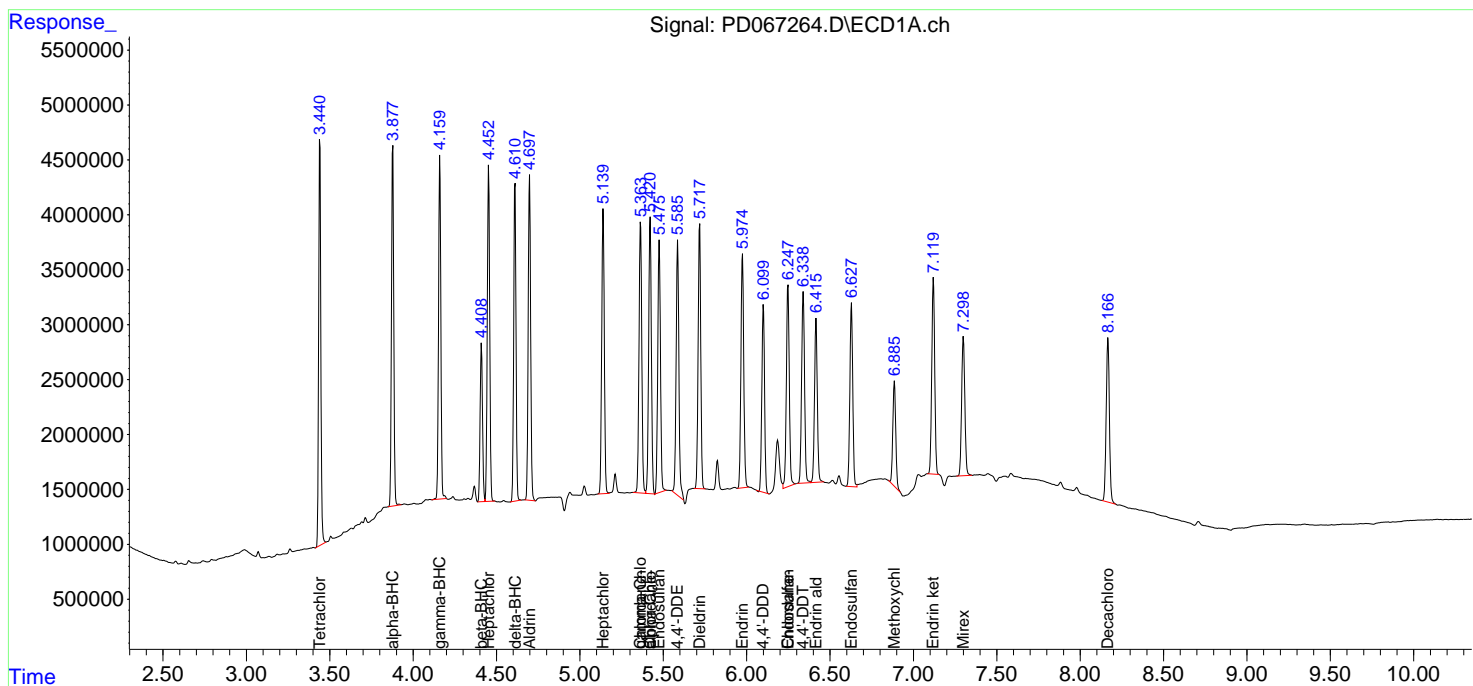
(f)=RT Delta > 1/2 Window (#)=Amounts differ by > 25% (m)=manual int.

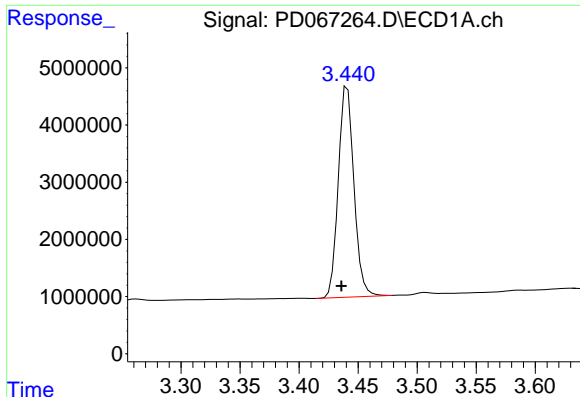
Data Path : Z:\pestpcbsrv\HPCHEM1\ECD_D\Data\PD121021\
 Data File : PD067264.D
 Signal(s) : Signal #1: ECD1A.ch Signal #2: ECD2B.ch
 Acq On : 10 Dec 2021 15:32
 Operator : AR\AJ
 Sample : PB141264BSD
 Misc :
 ALS Vial : 10 Sample Multiplier: 1

Instrument :
 ECD_D
 ClientSampleId :

Integration File signal 1: autoint1.e
 Integration File signal 2: autoint2.e
 Quant Time: Dec 10 21:53:42 2021
 Quant Method : Z:\pestpcbsrv\HPCHEM1\ECD_D\Method\PD113021.M
 Quant Title : GC Extractables
 QLast Update : Tue Nov 30 17:33:19 2021
 Response via : Initial Calibration
 Integrator: ChemStation

Volume Inj. : 2 µl
 Signal #1 Phase : ZB-MR2 Signal #2 Phase: ZB-MR1
 Signal #1 Info : 30M x 0.32mm x0.2 Signal #2 Info : 30M x 0.32mm x 0.50µm

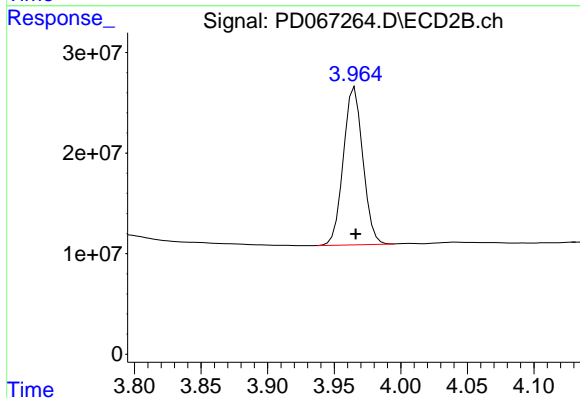




#1 Tetrachloro-m-xylene

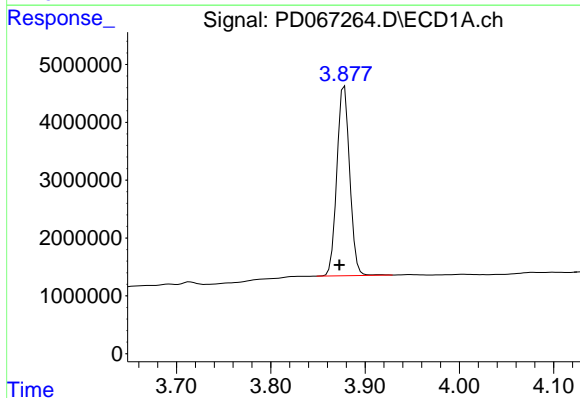
R.T.: 3.441 min
 Delta R.T.: 0.005 min
 Response: 33950321
 Conc: 16.43 ng/ml

Instrument :
 ECD_D
 ClientSampleId :



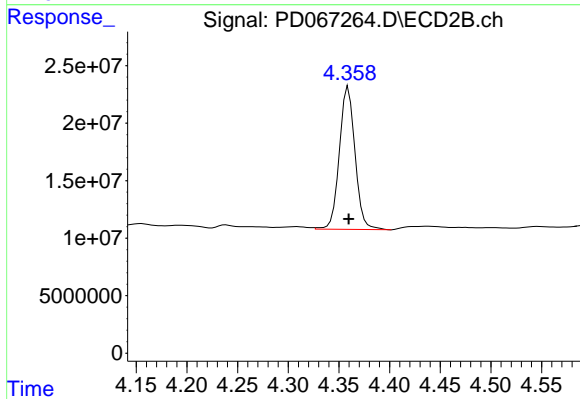
#1 Tetrachloro-m-xylene

R.T.: 3.965 min
 Delta R.T.: 0.000 min
 Response: 159824647
 Conc: 22.02 ng/ml



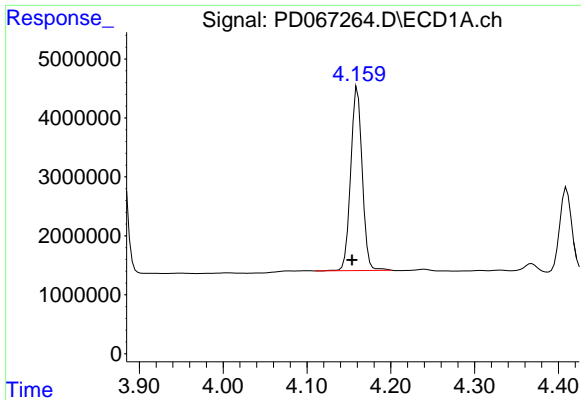
#2 alpha-BHC

R.T.: 3.878 min
 Delta R.T.: 0.005 min
 Response: 30945138
 Conc: 9.21 ng/ml



#2 alpha-BHC

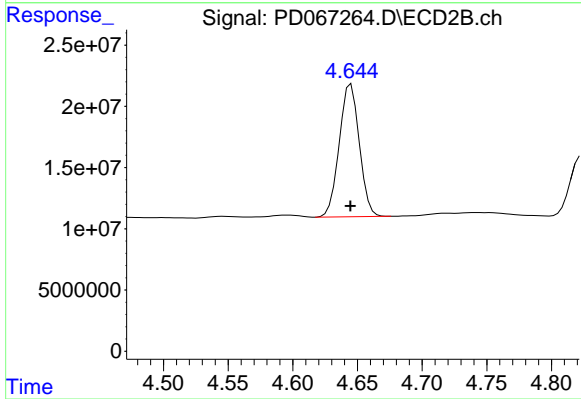
R.T.: 4.359 min
 Delta R.T.: 0.000 min
 Response: 133493416
 Conc: 12.83 ng/ml



#3 gamma-BHC (Lindane)

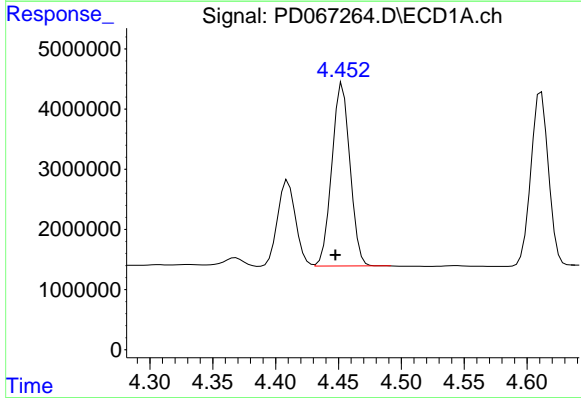
R.T.: 4.160 min
 Delta R.T.: 0.006 min
 Response: 29757593
 Conc: 9.26 ng/ml

Instrument :
 ECD_D
 ClientSampleId :



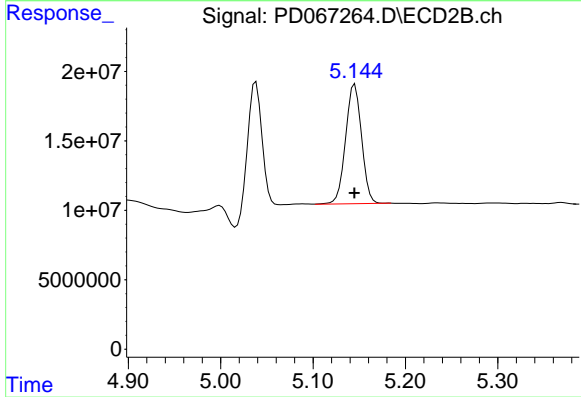
#3 gamma-BHC (Lindane)

R.T.: 4.645 min
 Delta R.T.: 0.000 min
 Response: 116737222
 Conc: 12.25 ng/ml



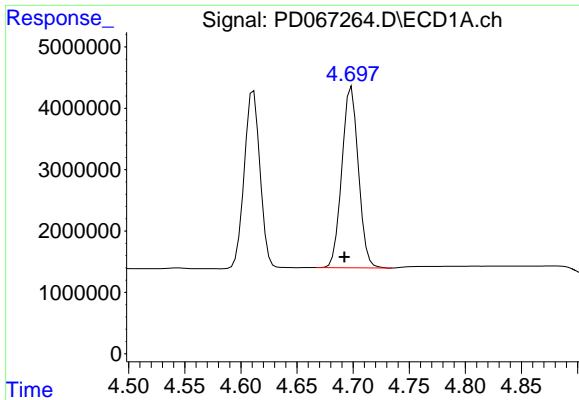
#4 Heptachlor

R.T.: 4.453 min
 Delta R.T.: 0.006 min
 Response: 30543519
 Conc: 9.39 ng/ml



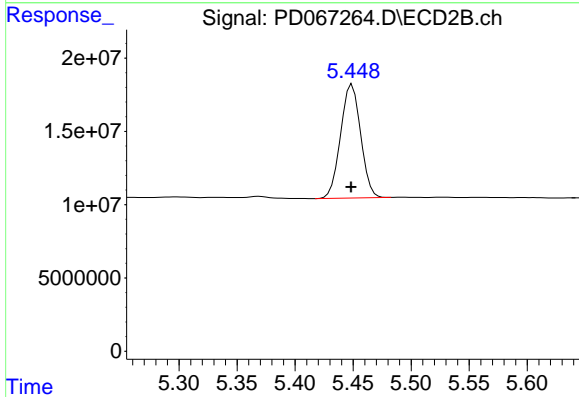
#4 Heptachlor

R.T.: 5.145 min
 Delta R.T.: 0.000 min
 Response: 103123886
 Conc: 11.46 ng/ml

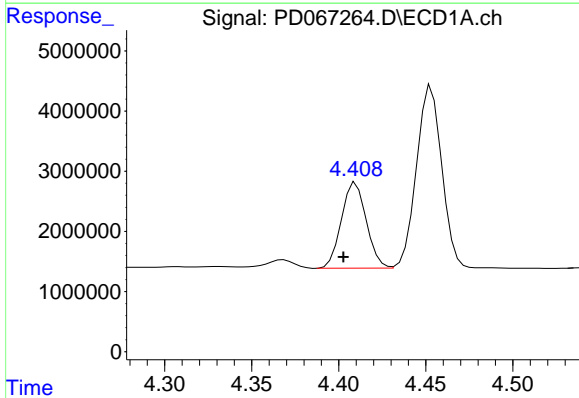


#5 Aldrin
 R.T.: 4.699 min
 Delta R.T.: 0.006 min
 Response: 30246105
 Conc: 9.50 ng/ml

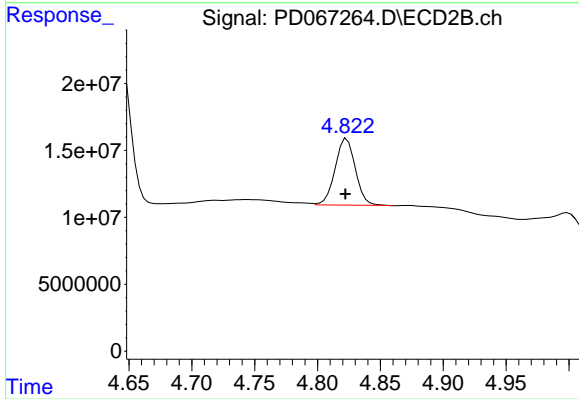
Instrument :
 ECD_D
 ClientSampleId :



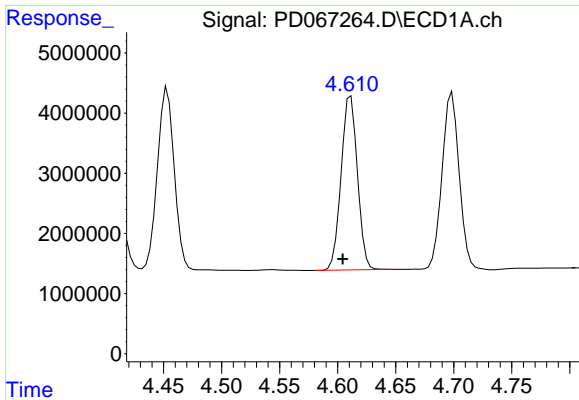
#5 Aldrin
 R.T.: 5.449 min
 Delta R.T.: 0.000 min
 Response: 93460622
 Conc: 11.12 ng/ml



#6 beta-BHC
 R.T.: 4.410 min
 Delta R.T.: 0.007 min
 Response: 14180210
 Conc: 10.39 ng/ml



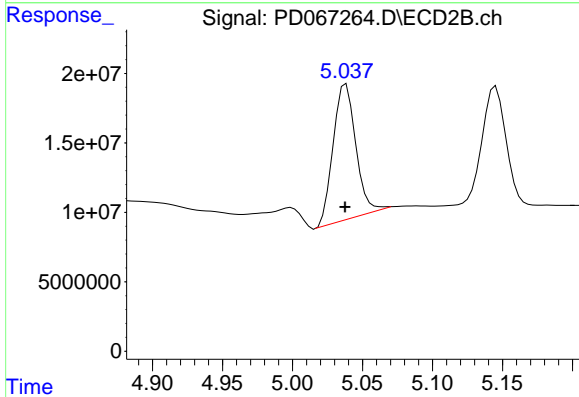
#6 beta-BHC
 R.T.: 4.823 min
 Delta R.T.: 0.001 min
 Response: 55871070
 Conc: 12.67 ng/ml



#7 delta-BHC

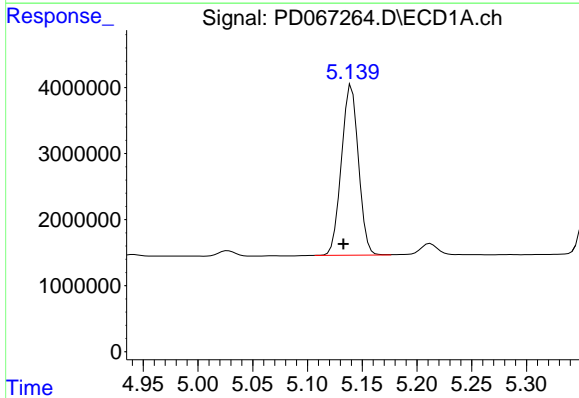
R.T.: 4.611 min
 Delta R.T.: 0.007 min
 Response: 28281837
 Conc: 9.46 ng/ml

Instrument :
 ECD_D
 ClientSampleId :



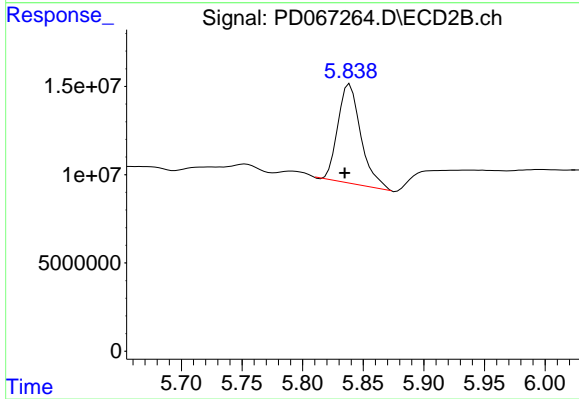
#7 delta-BHC

R.T.: 5.038 min
 Delta R.T.: 0.000 min
 Response: 109493978
 Conc: 11.93 ng/ml



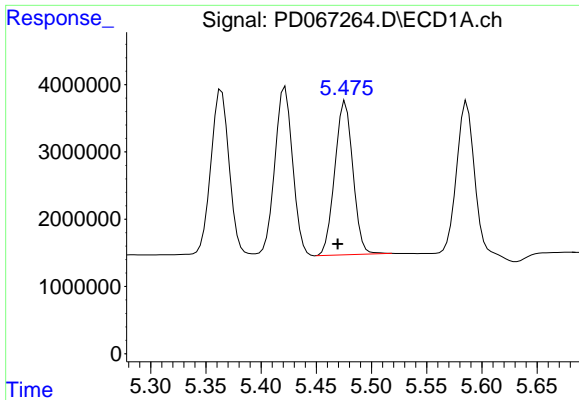
#8 Heptachlor epoxide

R.T.: 5.140 min
 Delta R.T.: 0.007 min
 Response: 27971602
 Conc: 9.71 ng/ml



#8 Heptachlor epoxide

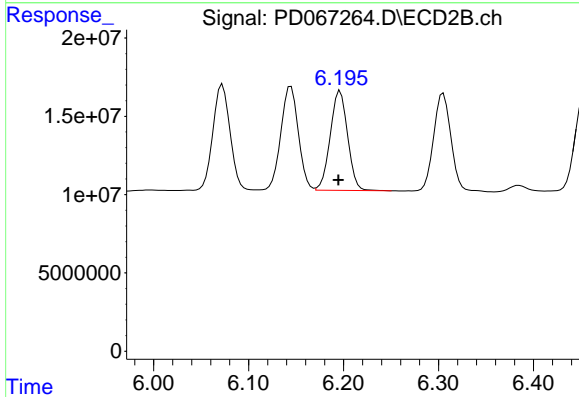
R.T.: 5.839 min
 Delta R.T.: 0.004 min
 Response: 72945903
 Conc: 10.40 ng/ml



#9 Endosulfan I

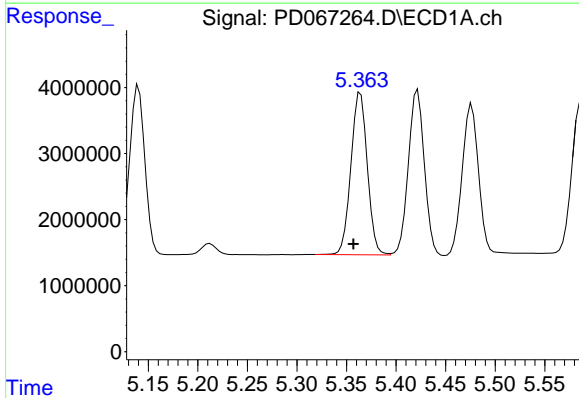
R.T.: 5.476 min
 Delta R.T.: 0.007 min
 Response: 26050680
 Conc: 9.99 ng/ml

Instrument :
 ECD_D
 ClientSampleId :



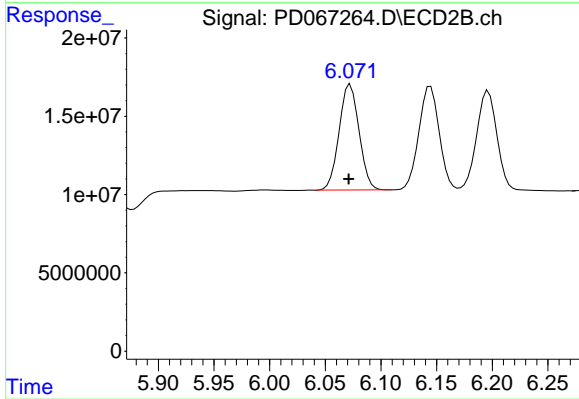
#9 Endosulfan I

R.T.: 6.196 min
 Delta R.T.: 0.002 min
 Response: 80891420
 Conc: 11.63 ng/ml



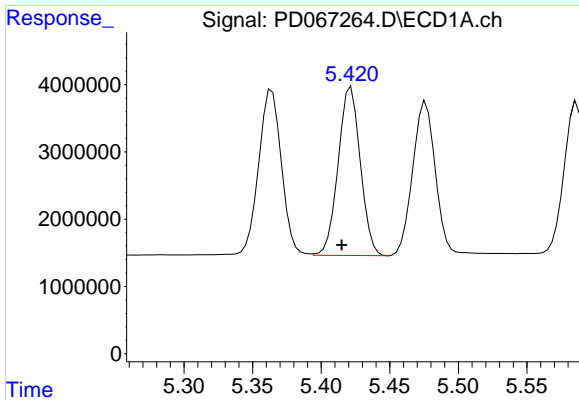
#10 gamma-Chlordane

R.T.: 5.364 min
 Delta R.T.: 0.007 min
 Response: 28372386
 Conc: 9.76 ng/ml



#10 gamma-Chlordane

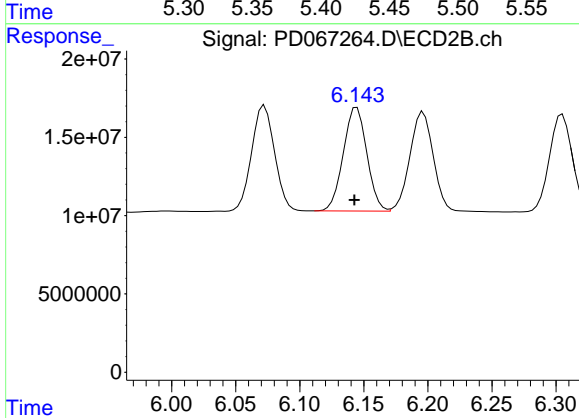
R.T.: 6.072 min
 Delta R.T.: 0.001 min
 Response: 84183381
 Conc: 11.44 ng/ml



#11 alpha-Chlordane

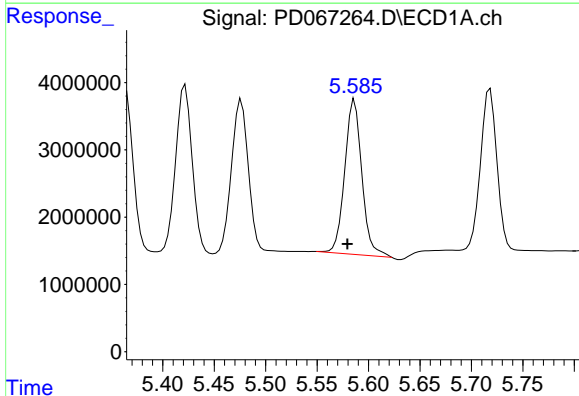
R.T.: 5.422 min
 Delta R.T.: 0.007 min
 Response: 28197824
 Conc: 9.93 ng/ml

Instrument :
 ECD_D
 ClientSampleId :



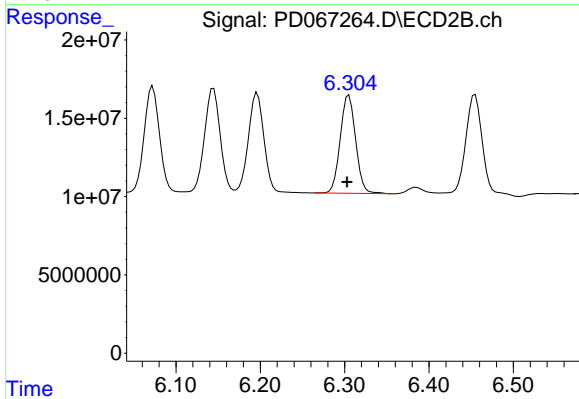
#11 alpha-Chlordane

R.T.: 6.145 min
 Delta R.T.: 0.002 min
 Response: 84666197
 Conc: 11.62 ng/ml



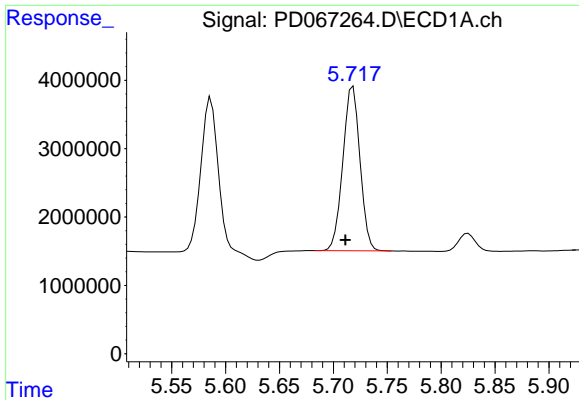
#12 4,4'-DDE

R.T.: 5.586 min
 Delta R.T.: 0.007 min
 Response: 26614420
 Conc: 9.92 ng/ml



#12 4,4'-DDE

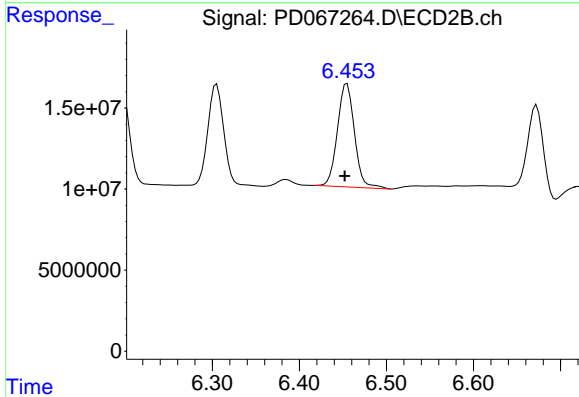
R.T.: 6.305 min
 Delta R.T.: 0.002 min
 Response: 79647830
 Conc: 11.51 ng/ml



#13 Dieldrin

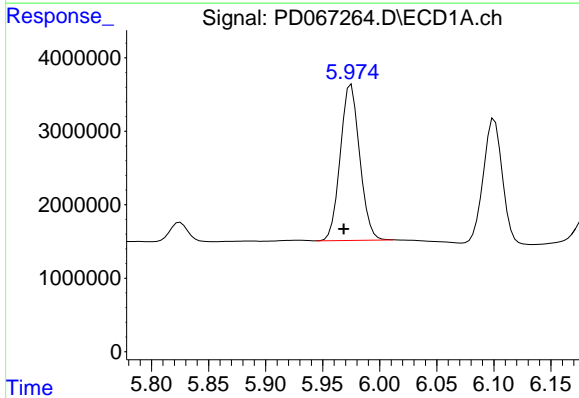
R.T.: 5.718 min
 Delta R.T.: 0.007 min
 Response: 26635547
 Conc: 9.53 ng/ml

Instrument :
 ECD_D
 ClientSampleId :



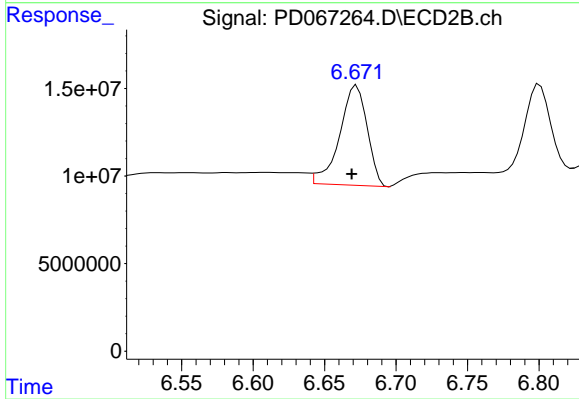
#13 Dieldrin

R.T.: 6.455 min
 Delta R.T.: 0.003 min
 Response: 86308349
 Conc: 11.77 ng/ml



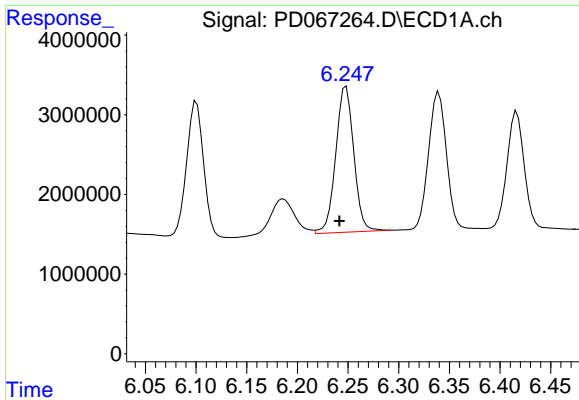
#14 Endrin

R.T.: 5.975 min
 Delta R.T.: 0.007 min
 Response: 25141613
 Conc: 11.01 ng/ml



#14 Endrin

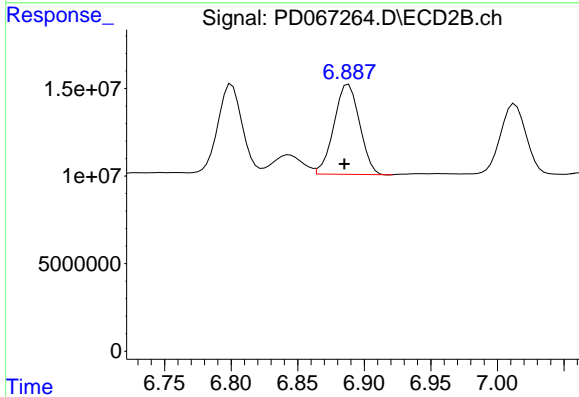
R.T.: 6.673 min
 Delta R.T.: 0.004 min
 Response: 76612182
 Conc: 13.64 ng/ml



#15 Endosulfan II

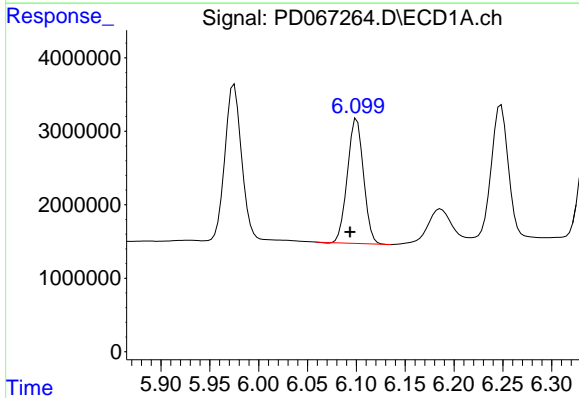
R.T.: 6.248 min
 Delta R.T.: 0.007 min
 Response: 22732988
 Conc: 10.15 ng/ml

Instrument :
 ECD_D
 ClientSampleId :



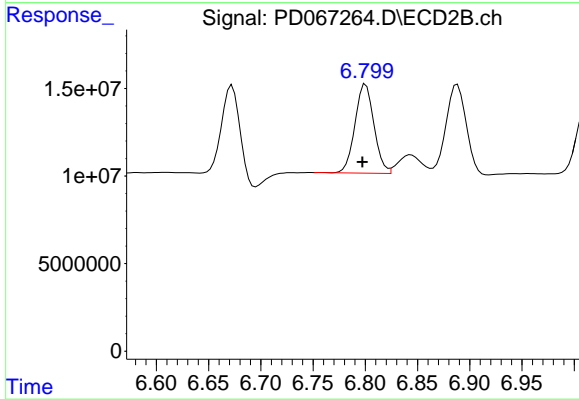
#15 Endosulfan II

R.T.: 6.888 min
 Delta R.T.: 0.003 min
 Response: 68769243
 Conc: 11.46 ng/ml



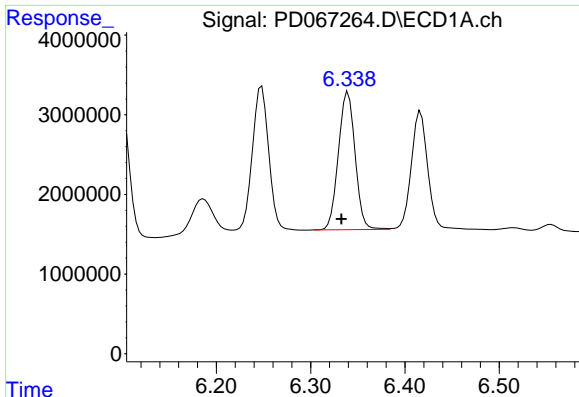
#16 4,4'-DDD

R.T.: 6.101 min
 Delta R.T.: 0.007 min
 Response: 19497981
 Conc: 9.28 ng/ml



#16 4,4'-DDD

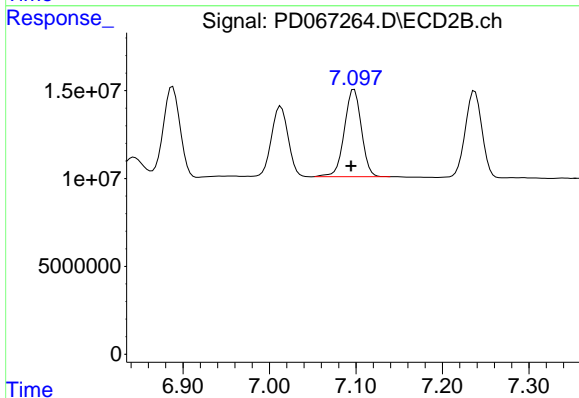
R.T.: 6.800 min
 Delta R.T.: 0.003 min
 Response: 64283537
 Conc: 10.99 ng/ml



#17 4,4'-DDT

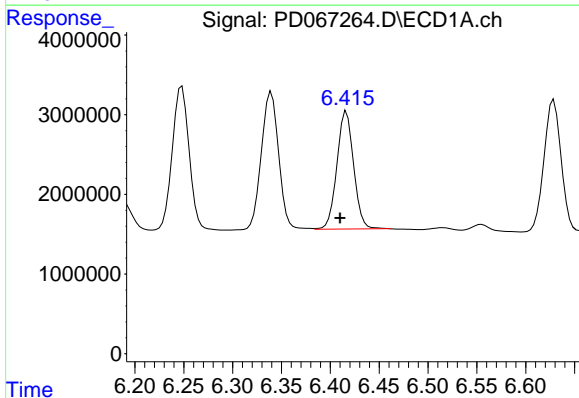
R.T.: 6.340 min
 Delta R.T.: 0.007 min
 Response: 21317389
 Conc: 10.08 ng/ml

Instrument :
 ECD_D
 ClientSampleId :



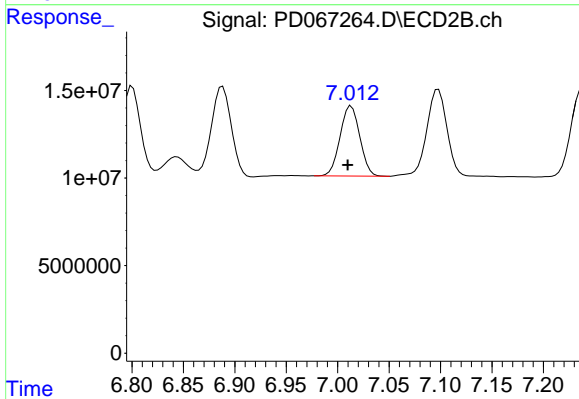
#17 4,4'-DDT

R.T.: 7.098 min
 Delta R.T.: 0.004 min
 Response: 67683422
 Conc: 11.34 ng/ml



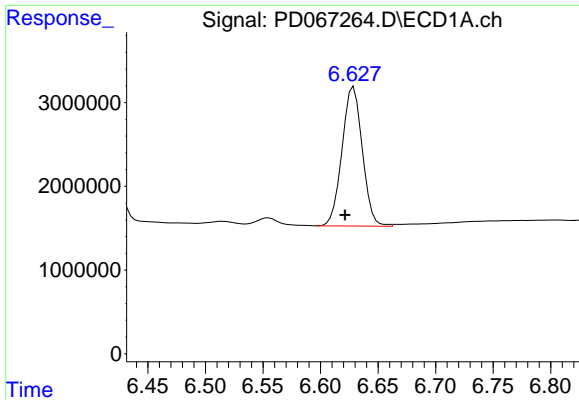
#18 Endrin aldehyde

R.T.: 6.417 min
 Delta R.T.: 0.007 min
 Response: 17666132
 Conc: 10.56 ng/ml



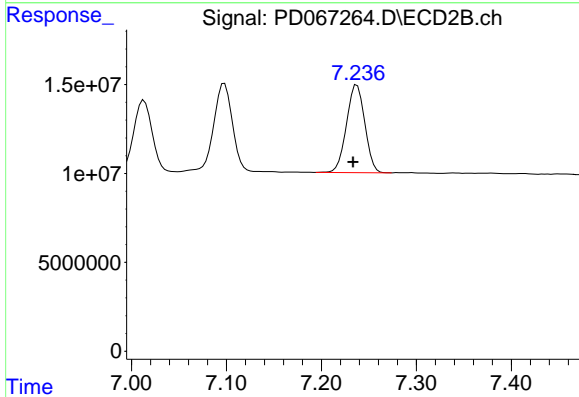
#18 Endrin aldehyde

R.T.: 7.013 min
 Delta R.T.: 0.004 min
 Response: 53353501
 Conc: 11.38 ng/ml

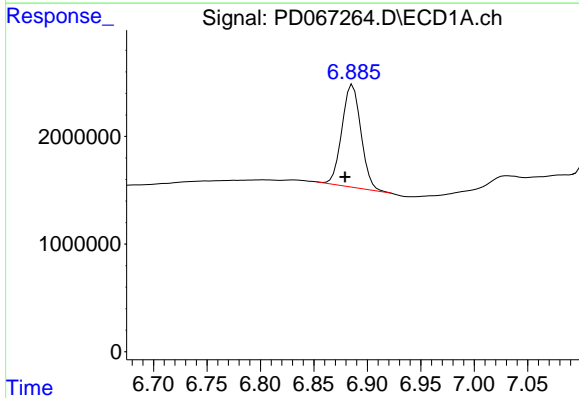


#19 Endosulfan Sulfate
 R.T.: 6.629 min
 Delta R.T.: 0.007 min
 Response: 20467385
 Conc: 10.09 ng/ml

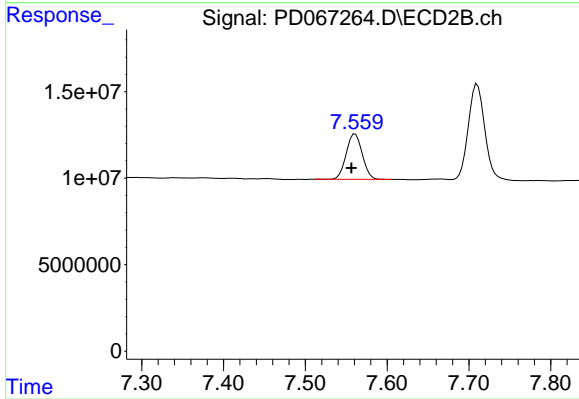
Instrument :
 ECD_D
 ClientSampleId :



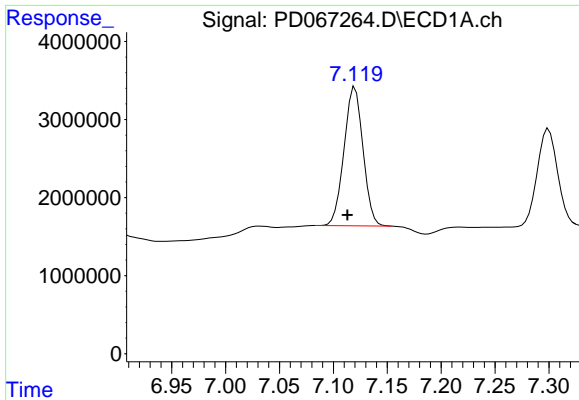
#19 Endosulfan Sulfate
 R.T.: 7.237 min
 Delta R.T.: 0.004 min
 Response: 66198624
 Conc: 11.03 ng/ml



#20 Methoxychlor
 R.T.: 6.886 min
 Delta R.T.: 0.007 min
 Response: 11713265
 Conc: 10.56 ng/ml



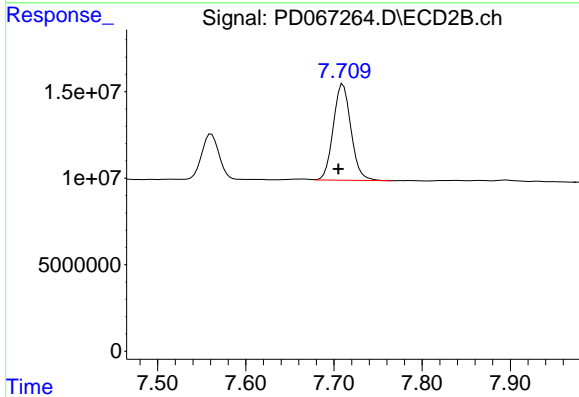
#20 Methoxychlor
 R.T.: 7.561 min
 Delta R.T.: 0.004 min
 Response: 35456125
 Conc: 11.01 ng/ml



#21 Endrin ketone

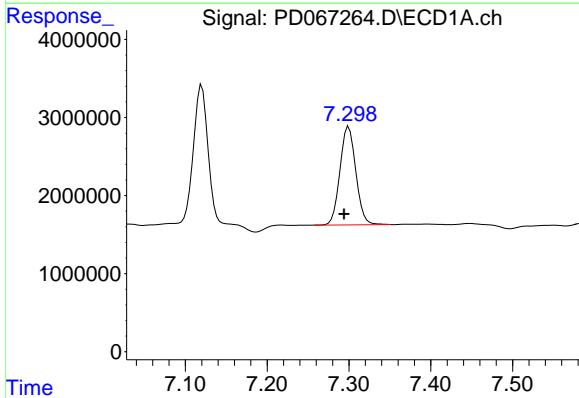
R.T.: 7.120 min
 Delta R.T.: 0.007 min
 Response: 21802117
 Conc: 9.62 ng/ml

Instrument :
 ECD_D
 ClientSampleId :



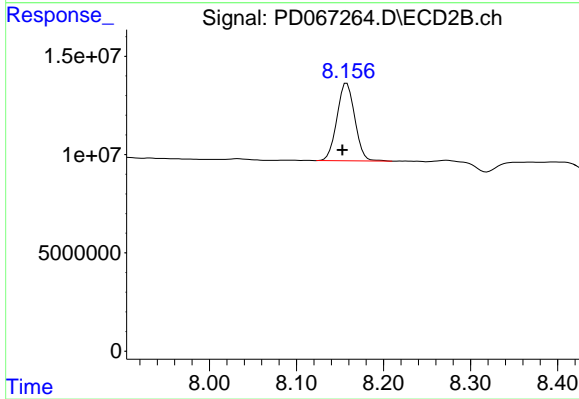
#21 Endrin ketone

R.T.: 7.710 min
 Delta R.T.: 0.005 min
 Response: 77382616
 Conc: 10.70 ng/ml



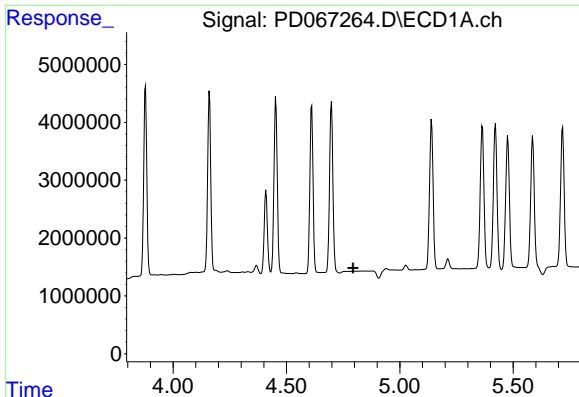
#22 Mirex

R.T.: 7.300 min
 Delta R.T.: 0.006 min
 Response: 16925631
 Conc: 10.55 ng/ml



#22 Mirex

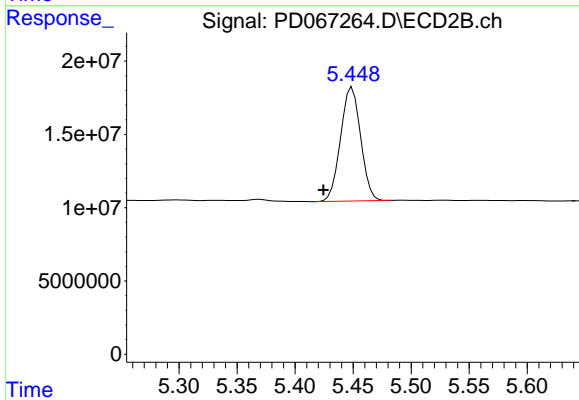
R.T.: 8.158 min
 Delta R.T.: 0.005 min
 Response: 56079743
 Conc: 11.45 ng/ml



#24 Chlordane-2

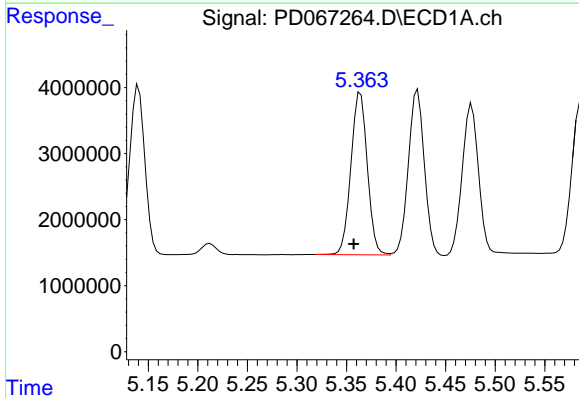
R.T.: 0.000 min
 Exp R.T.: 4.794 min
 Response: 0
 Conc: N.D.

Instrument :
 ECD_D
 ClientSampleId :



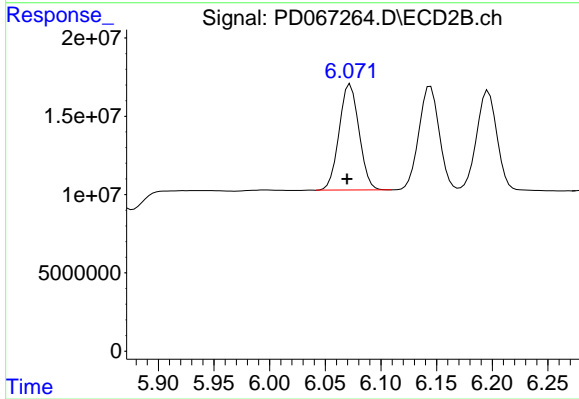
#24 Chlordane-2

R.T.: 5.449 min
 Delta R.T.: 0.025 min
 Response: 93460622
 Conc: 350.36 ng/ml



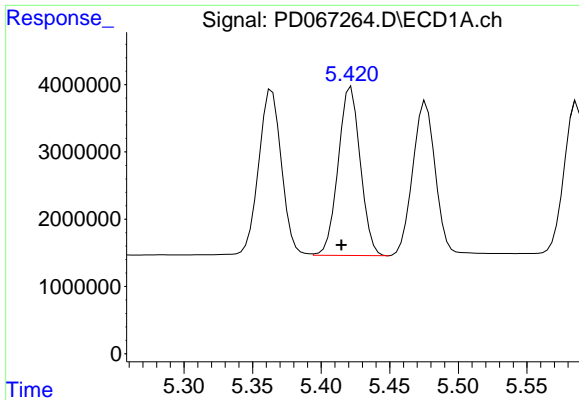
#25 Chlordane-3

R.T.: 5.364 min
 Delta R.T.: 0.007 min
 Response: 28372386
 Conc: 103.07 ng/ml



#25 Chlordane-3

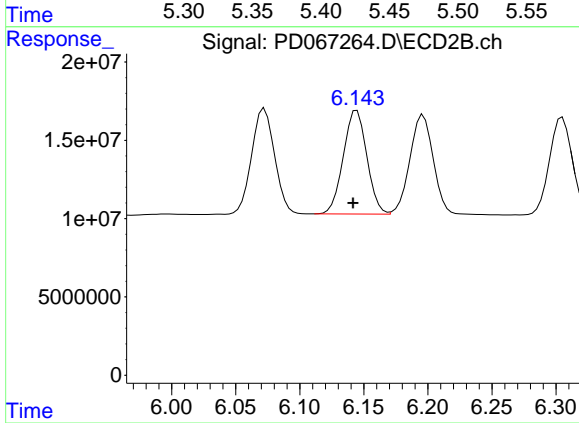
R.T.: 6.072 min
 Delta R.T.: 0.003 min
 Response: 84183381
 Conc: 88.13 ng/ml



#26 Chlordane-4

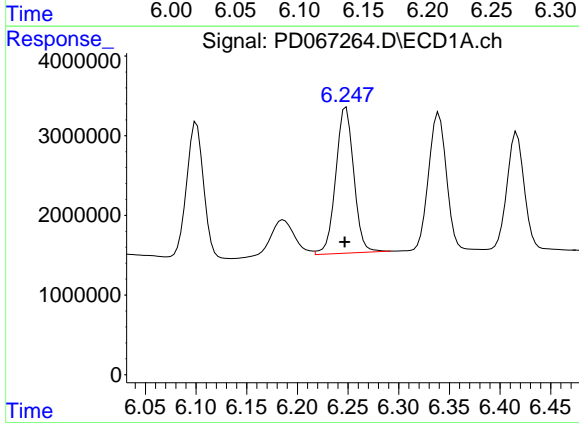
R.T.: 5.422 min
 Delta R.T.: 0.007 min
 Response: 28197824
 Conc: 123.53 ng/ml

Instrument :
 ECD_D
 ClientSampleId :



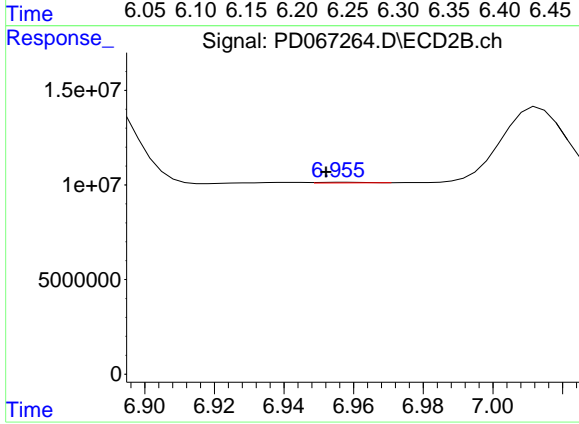
#26 Chlordane-4

R.T.: 6.145 min
 Delta R.T.: 0.003 min
 Response: 84666197
 Conc: 76.16 ng/ml



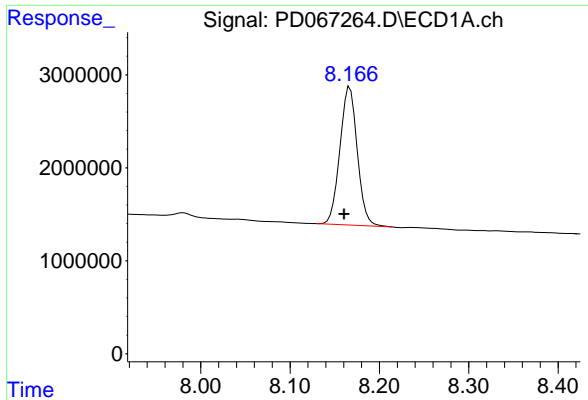
#27 Chlordane-5

R.T.: 6.248 min
 Delta R.T.: 0.001 min
 Response: 22732988
 Conc: 250.18 ng/ml



#27 Chlordane-5

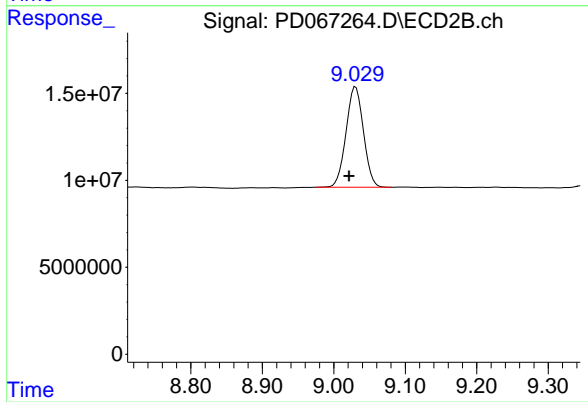
R.T.: 6.957 min
 Delta R.T.: 0.005 min
 Response: 295953
 Conc: 1.37 ng/ml



#28 Decachlorobiphenyl

R.T.: 8.167 min
Delta R.T.: 0.007 min
Response: 20026430
Conc: 17.68 ng/ml

Instrument :
ECD_D
ClientSampleId :



#28 Decachlorobiphenyl

R.T.: 9.031 min
Delta R.T.: 0.009 min
Response: 97911804
Conc: 19.48 ng/ml