

Data Path : Z:\pestpcbsrv\HPCHEM1\ECD_D\Data\PD121218\
 Data File : PD050785.D
 Signal(s) : Signal #1: ECD1A.CH Signal #2: ECD2B.CH
 Acq On : 12 Dec 2018 10:07
 Operator : AJ\SJ
 Sample : PEM
 Misc :
 ALS Vial : 3 Sample Multiplier: 1

Instrument :
 ECD_D
ClientSampled :
 PEM

Manual Integrations
APPROVED
 Sohil
 12/13/2018 9:39:42 AM

Integration File signal 1: autoint1.e
 Integration File signal 2: autoint2.e
 Quant Time: Dec 13 04:26:26 2018
 Quant Method : Z:\pestpcbsrv\HPCHEM1\ECD_D\Method\PD111618.M
 Quant Title : GC Extractables
 QLast Update : Fri Nov 16 02:59:21 2018
 Response via : Initial Calibration
 Integrator: ChemStation 6890 Scale Mode: Large solvent peaks clipped

Volume Inj. : 2 µl
 Signal #1 Phase : ZB-MR2 Signal #2 Phase: ZB-MR1
 Signal #1 Info : 30M x 0.32mm x0.2 Signal #2 Info : 30M x 0.32mm x 0.50µm

Compound	RT#1	RT#2	Resp#1	Resp#2	ng/ml	ng/ml

System Monitoring Compounds						
1) SA Tetrachlo...	3.226	4.044	26722691	535.3E6	18.363	19.433
28) SA Decachlor...	7.830	9.151	33555724	405.8E6	22.668	20.048
Target Compounds						
2) A alpha-BHC	3.647	4.436	19285656	409.8E6	8.215	9.655
3) MA gamma-BHC...	3.915	4.723	19436192	380.5E6	8.330	10.003
6) B beta-BHC	4.161	4.893	8398933	170.7E6	9.187	10.291
12) B 4,4'-DDE	5.297	6.394	320135	4025923	0.156	0.137
14) MA Endrin	5.658	6.767	91682642	1167.2E6	47.719	48.426
16) A 4,4'-DDD	5.802	6.889	2042632	34232890	1.192	1.499m#
17) MA 4,4'-DDT	6.029	7.186	165.0E6	1893.7E6	93.103	91.751
18) B Endrin al...	6.095	7.101	169676	2192244	0.112m	0.108m
20) A Methoxychlor	6.576	7.644	219.6E6	2323.8E6	230.017	209.000
21) B Endrin ke...	6.776	7.795	1122245	10710772	0.519m	0.462

(f)=RT Delta > 1/2 Window (#)=Amounts differ by > 25% (m)=manual int.

Data Path : Z:\pestpcbsrv\HPCHEM1\ECD_D\Data\PD121218\
 Data File : PD050785.D
 Signal(s) : Signal #1: ECD1A.CH Signal #2: ECD2B.CH
 Acq On : 12 Dec 2018 10:07
 Operator : AJ\SJ
 Sample : PEM
 Misc :
 ALS Vial : 3 Sample Multiplier: 1

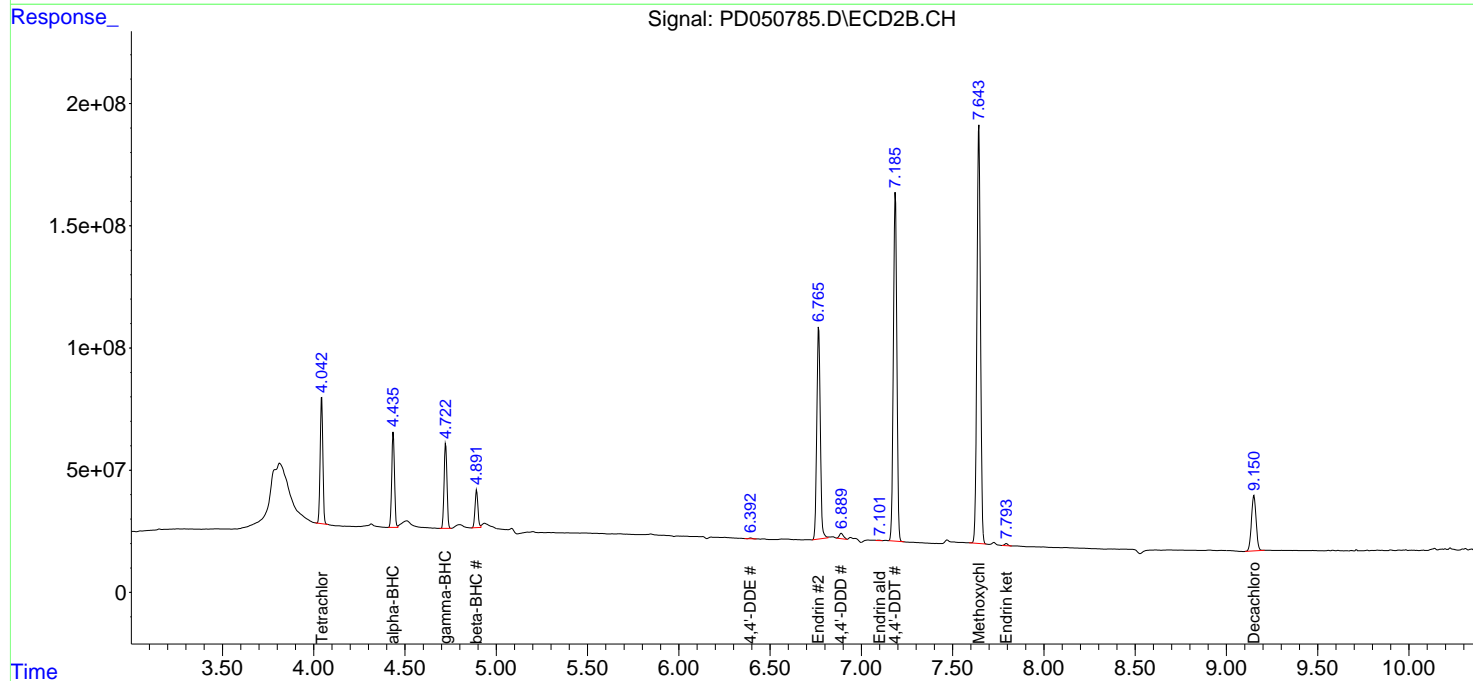
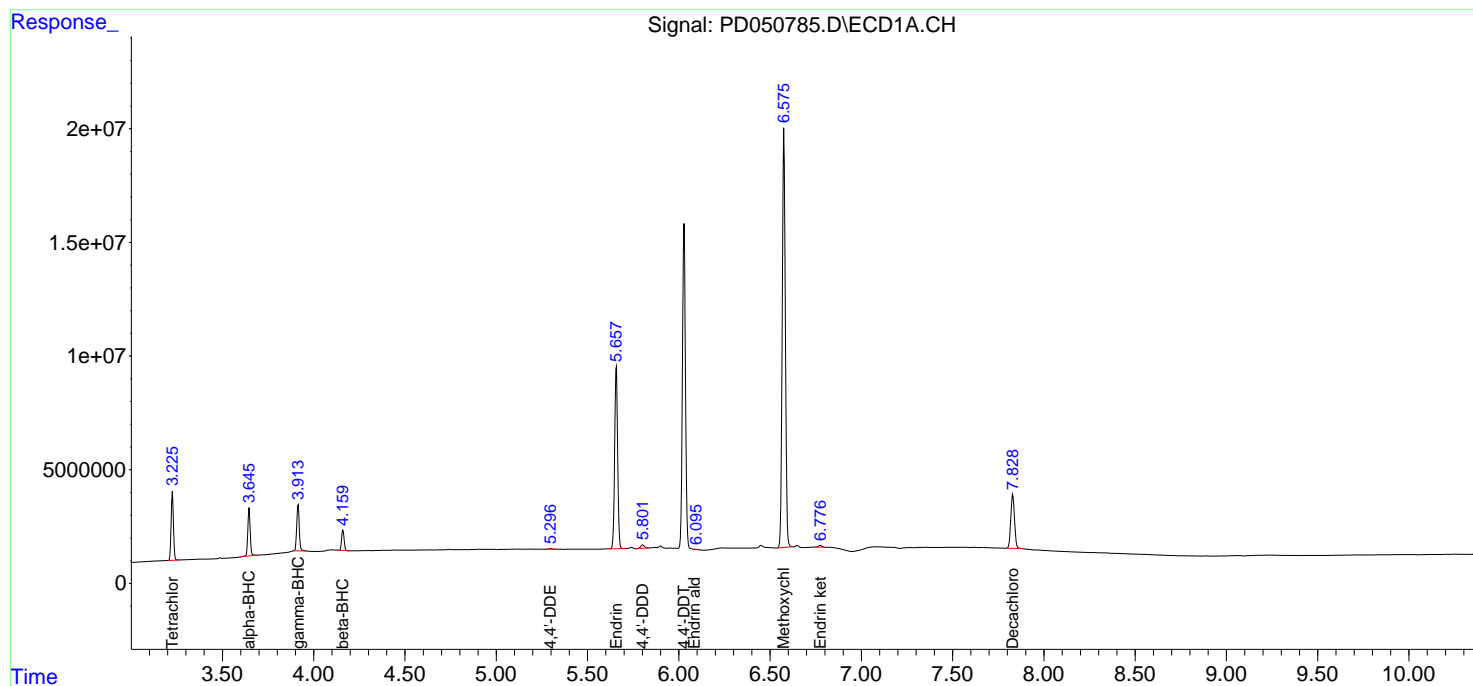
Instrument :
 ECD_D
 ClientSampled :
 PEM

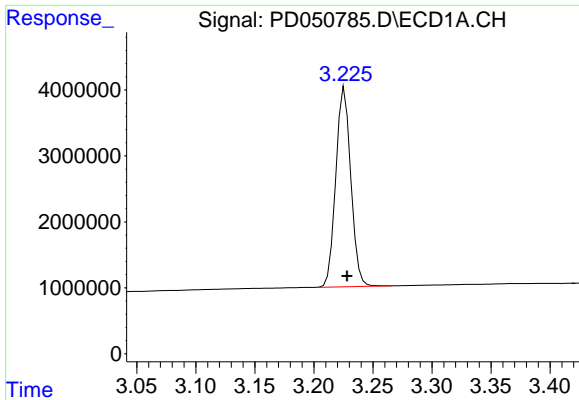
Manual Integrations
 APPROVED

Sohil
 12/13/2018 9:39:42 AM

Integration File signal 1: autoint1.e
 Integration File signal 2: autoint2.e
 Quant Time: Dec 13 04:26:26 2018
 Quant Method : Z:\pestpcbsrv\HPCHEM1\ECD_D\Method\PD111618.M
 Quant Title : GC Extractables
 QLast Update : Fri Nov 16 02:59:21 2018
 Response via : Initial Calibration
 Integrator: ChemStation 6890 Scale Mode: Large solvent peaks clipped

Volume Inj. : 2 µl
 Signal #1 Phase : ZB-MR2 Signal #2 Phase: ZB-MR1
 Signal #1 Info : 30M x 0.32mm x 0.2 Signal #2 Info : 30M x 0.32mm x 0.50µm

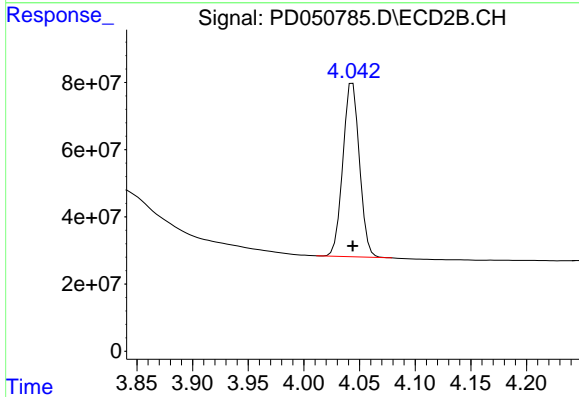




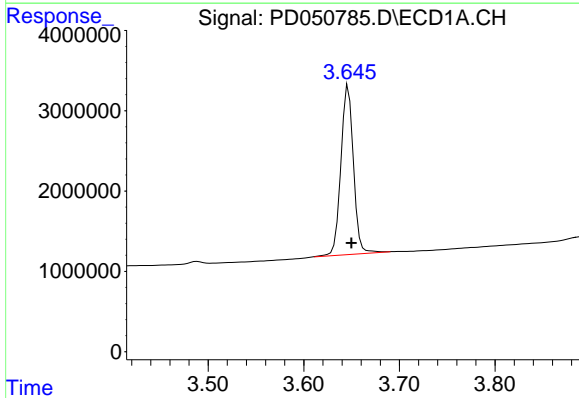
#1 Tetrachloro-m-xylene
 R.T.: 3.226 min
 Delta R.T.: -0.002 min
 Response: 26722691
 Conc: 18.36 ng/ml

Instrument :
 ECD_D
 ClientSampled :
 PEM

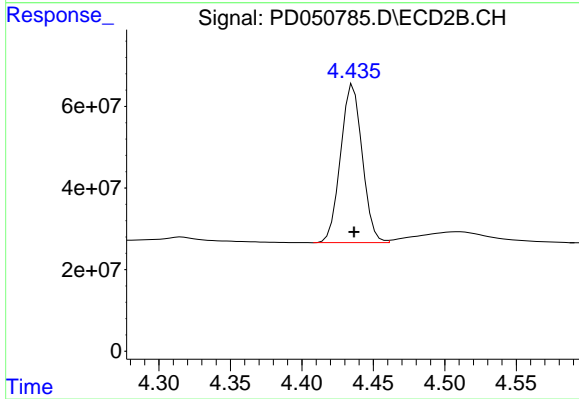
Manual Integrations
 APPROVED
 Sohil
 12/13/2018 9:39:42 AM



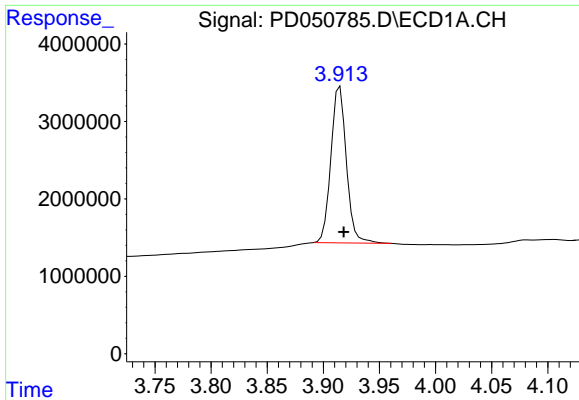
#1 Tetrachloro-m-xylene
 R.T.: 4.044 min
 Delta R.T.: 0.000 min
 Response: 535262958
 Conc: 19.43 ng/ml



#2 alpha-BHC
 R.T.: 3.647 min
 Delta R.T.: -0.003 min
 Response: 19285656
 Conc: 8.22 ng/ml



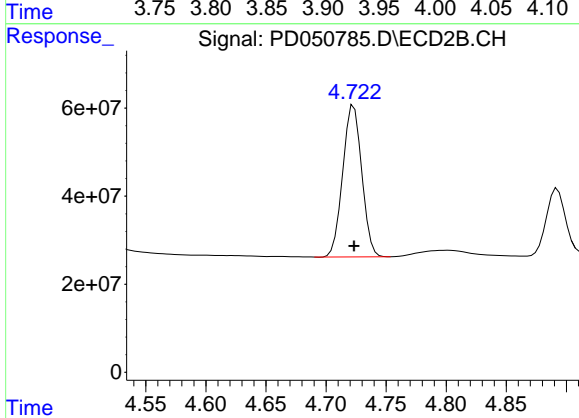
#2 alpha-BHC
 R.T.: 4.436 min
 Delta R.T.: 0.000 min
 Response: 409778831
 Conc: 9.66 ng/ml



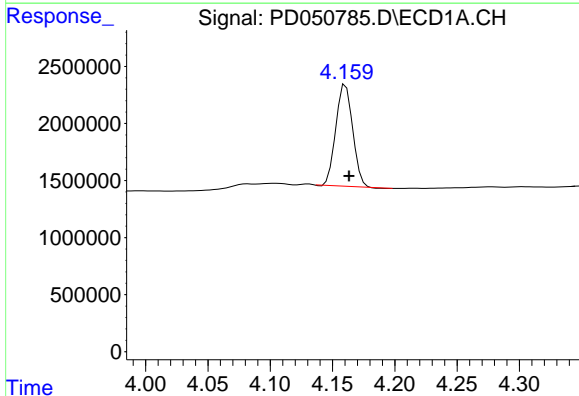
#3 gamma-BHC (Lindane)
 R.T.: 3.915 min
 Delta R.T.: -0.003 min
 Response: 19436192
 Conc: 8.33 ng/ml

Instrument :
 ECD_D
 ClientSampled :
 PEM

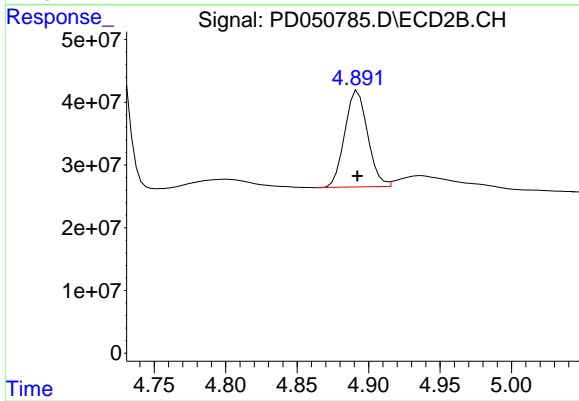
Manual Integrations
 APPROVED
 Sohil
 12/13/2018 9:39:42 AM



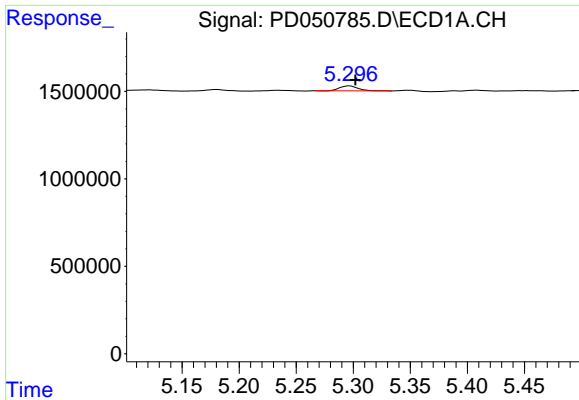
#3 gamma-BHC (Lindane)
 R.T.: 4.723 min
 Delta R.T.: 0.000 min
 Response: 380542715
 Conc: 10.00 ng/ml



#6 beta-BHC
 R.T.: 4.161 min
 Delta R.T.: -0.003 min
 Response: 8398933
 Conc: 9.19 ng/ml



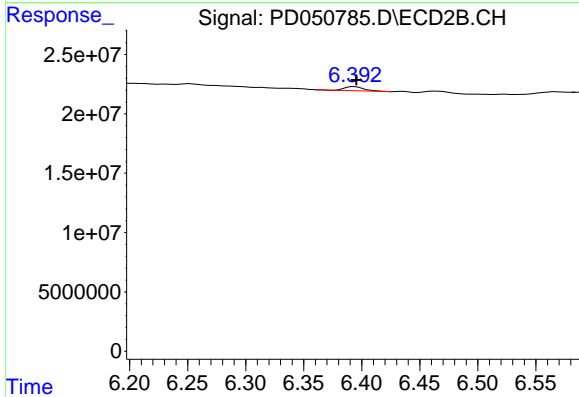
#6 beta-BHC
 R.T.: 4.893 min
 Delta R.T.: 0.000 min
 Response: 170731532
 Conc: 10.29 ng/ml



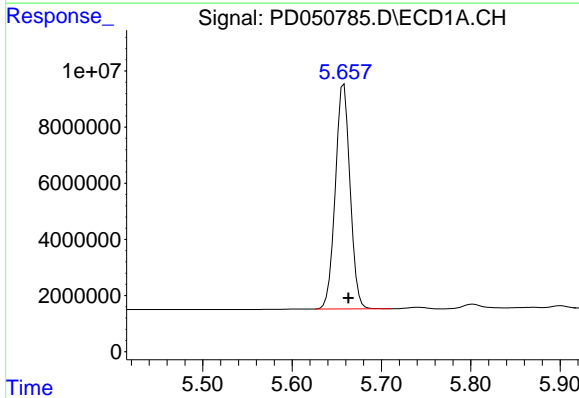
#12 4,4'-DDE
 R.T.: 5.297 min
 Delta R.T.: -0.005 min
 Response: 320135
 Conc: 0.16 ng/ml

Instrument :
 ECD_D
ClientSampled :
 PEM

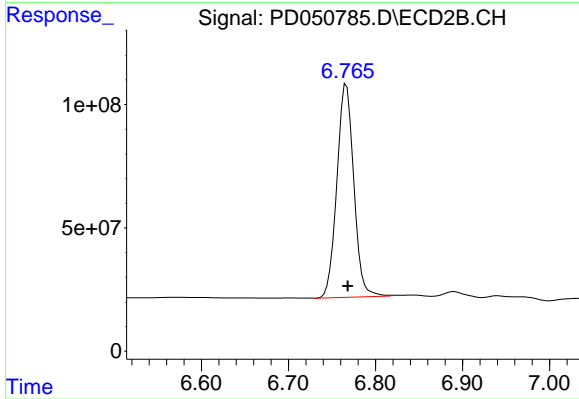
Manual Integrations
APPROVED
 Sohil
 12/13/2018 9:39:42 AM



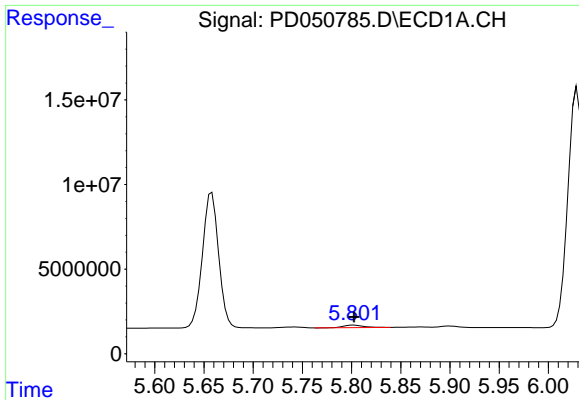
#12 4,4'-DDE
 R.T.: 6.394 min
 Delta R.T.: -0.002 min
 Response: 4025923
 Conc: 0.14 ng/ml



#14 Endrin
 R.T.: 5.658 min
 Delta R.T.: -0.005 min
 Response: 91682642
 Conc: 47.72 ng/ml



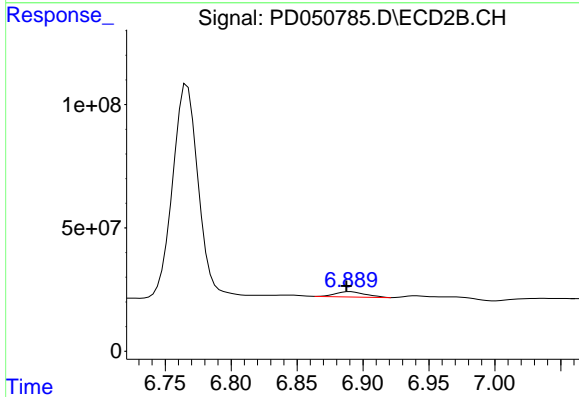
#14 Endrin
 R.T.: 6.767 min
 Delta R.T.: -0.001 min
 Response: 1167176428
 Conc: 48.43 ng/ml



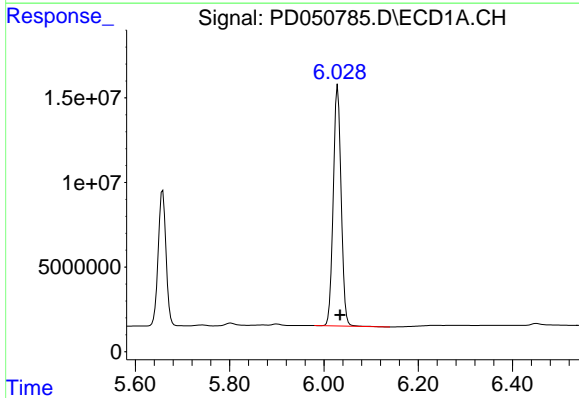
#16 4,4'-DDD
 R.T.: 5.802 min
 Delta R.T.: 0.000 min
 Response: 2042632
 Conc: 1.19 ng/ml

Instrument :
 ECD_D
 ClientSampled :
 PEM

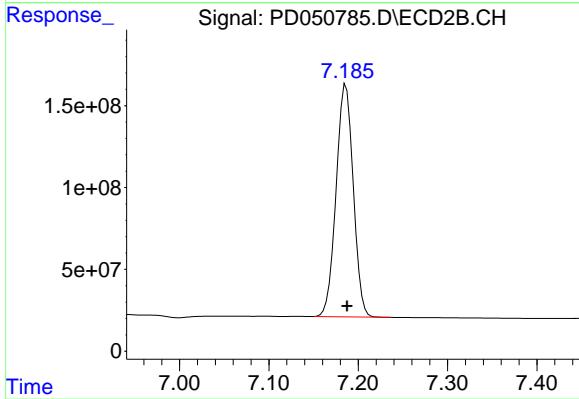
Manual Integrations
APPROVED
 Sohil
 12/13/2018 9:39:42 AM



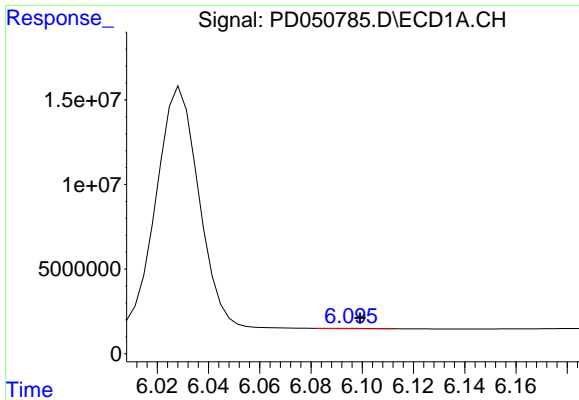
#16 4,4'-DDD
 R.T.: 6.889 min
 Delta R.T.: 0.002 min
 Response: 34232890
 Conc: 1.50 ng/ml m



#17 4,4'-DDT
 R.T.: 6.029 min
 Delta R.T.: -0.005 min
 Response: 164969993
 Conc: 93.10 ng/ml



#17 4,4'-DDT
 R.T.: 7.186 min
 Delta R.T.: -0.001 min
 Response: 1893720286
 Conc: 91.75 ng/ml



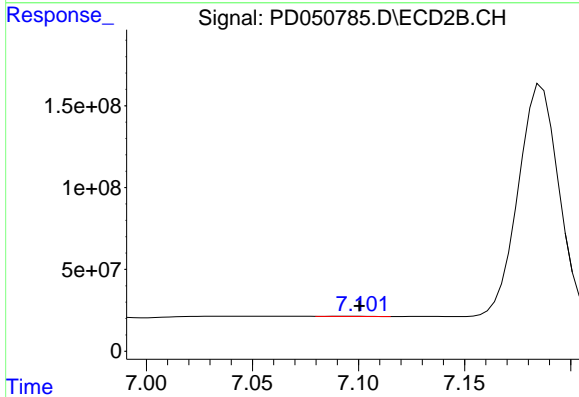
#18 Endrin aldehyde

R.T.: 6.095 min
 Delta R.T.: -0.004 min
 Response: 169676
 Conc: 0.11 ng/ml m

Instrument :
 ECD_D
 ClientSampled :
 PEM

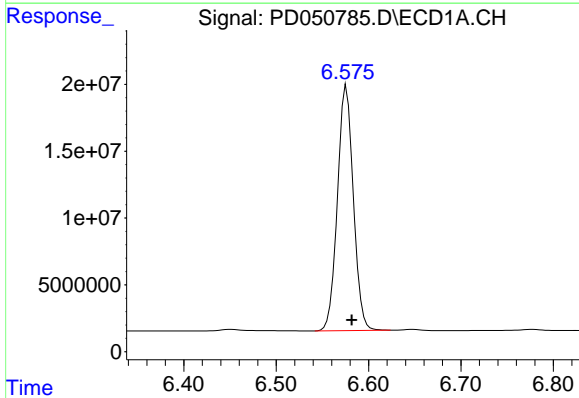
Manual Integrations
 APPROVED

Sohil
 12/13/2018 9:39:42 AM



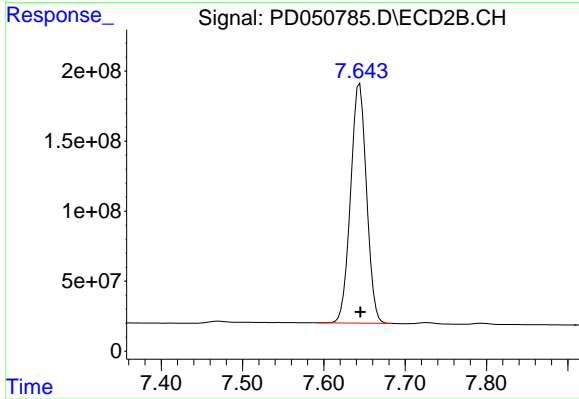
#18 Endrin aldehyde

R.T.: 7.101 min
 Delta R.T.: 0.000 min
 Response: 2192244
 Conc: 0.11 ng/ml m



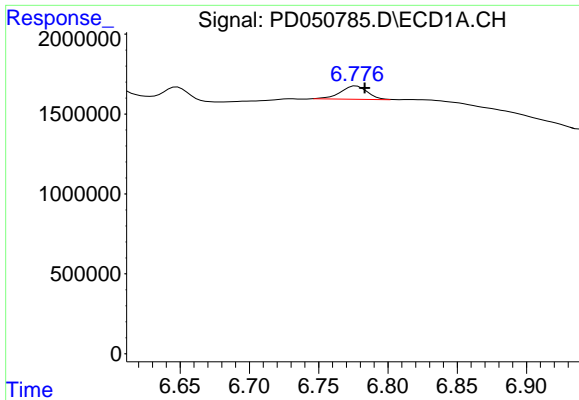
#20 Methoxychlor

R.T.: 6.576 min
 Delta R.T.: -0.006 min
 Response: 219555909
 Conc: 230.02 ng/ml



#20 Methoxychlor

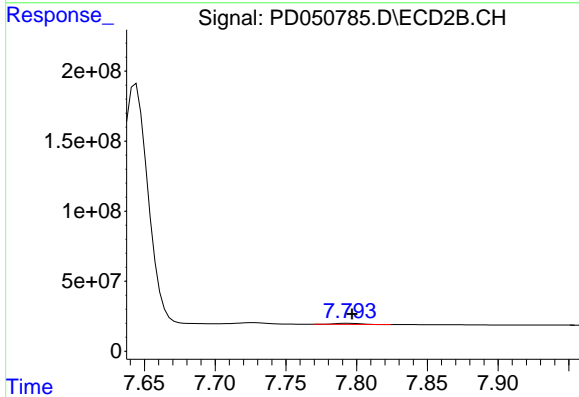
R.T.: 7.644 min
 Delta R.T.: 0.000 min
 Response: 2323842664
 Conc: 209.00 ng/ml



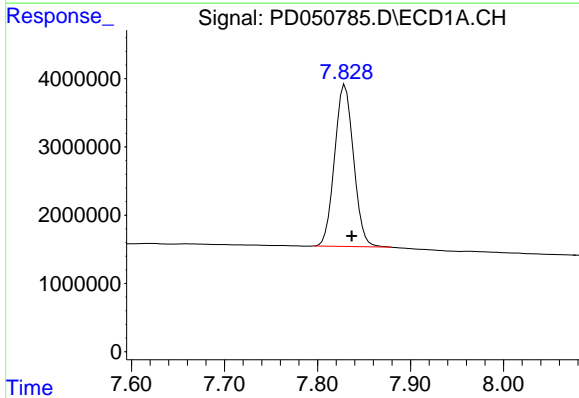
#21 Endrin ketone
 R.T.: 6.776 min
 Delta R.T.: -0.007 min
 Response: 1122245
 Conc: 0.52 ng/ml m

Instrument :
 ECD_D
 ClientSampled :
 PEM

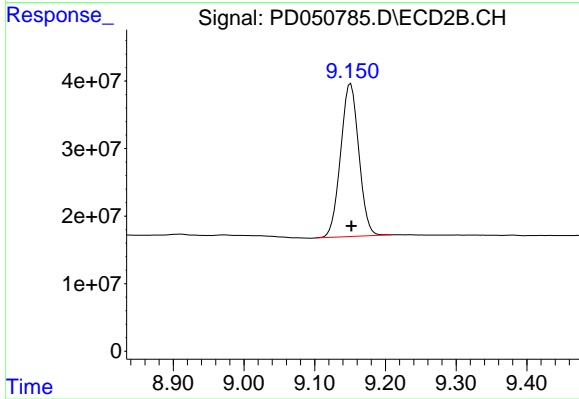
Manual Integrations
 APPROVED
 Sohil
 12/13/2018 9:39:42 AM



#21 Endrin ketone
 R.T.: 7.795 min
 Delta R.T.: -0.002 min
 Response: 10710772
 Conc: 0.46 ng/ml



#28 Decachlorobiphenyl
 R.T.: 7.830 min
 Delta R.T.: -0.007 min
 Response: 33555724
 Conc: 22.67 ng/ml



#28 Decachlorobiphenyl
 R.T.: 9.151 min
 Delta R.T.: 0.000 min
 Response: 405813963
 Conc: 20.05 ng/ml