

Data Path : Z:\pestpcbsrv\HPCHEM1\ECD_D\Data\PD121218\
 Data File : PD050792.D
 Signal(s) : Signal #1: ECD1A.CH Signal #2: ECD2B.CH
 Acq On : 12 Dec 2018 12:05
 Operator : AJ\SJ
 Sample : J6316-05
 Misc :
 ALS Vial : 10 Sample Multiplier: 1

Instrument :
 ECD_D
 ClientSampleId :
 BORING-SAMPLE-CBH-591

Integration File signal 1: autoint1.e
 Integration File signal 2: autoint2.e
 Quant Time: Dec 13 04:29:11 2018
 Quant Method : Z:\pestpcbsrv\HPCHEM1\ECD_D\Method\PD111618.M
 Quant Title : GC Extractables
 QLast Update : Fri Nov 16 02:59:21 2018
 Response via : Initial Calibration
 Integrator: ChemStation 6890 Scale Mode: Large solvent peaks clipped

Volume Inj. : 2 µl
 Signal #1 Phase : ZB-MR2 Signal #2 Phase: ZB-MR1
 Signal #1 Info : 30M x 0.32mm x0.2 Signal #2 Info : 30M x 0.32mm x 0.50µm

Compound	RT#1	RT#2	Resp#1	Resp#2	ng/ml	ng/ml

System Monitoring Compounds						
1) SA Tetrachlo...	3.226	4.044	14207481	258.6E6	9.763	9.390
28) SA Decachlor...	7.830	9.151	18032697	130.5E6	12.181	6.445 #

Target Compounds

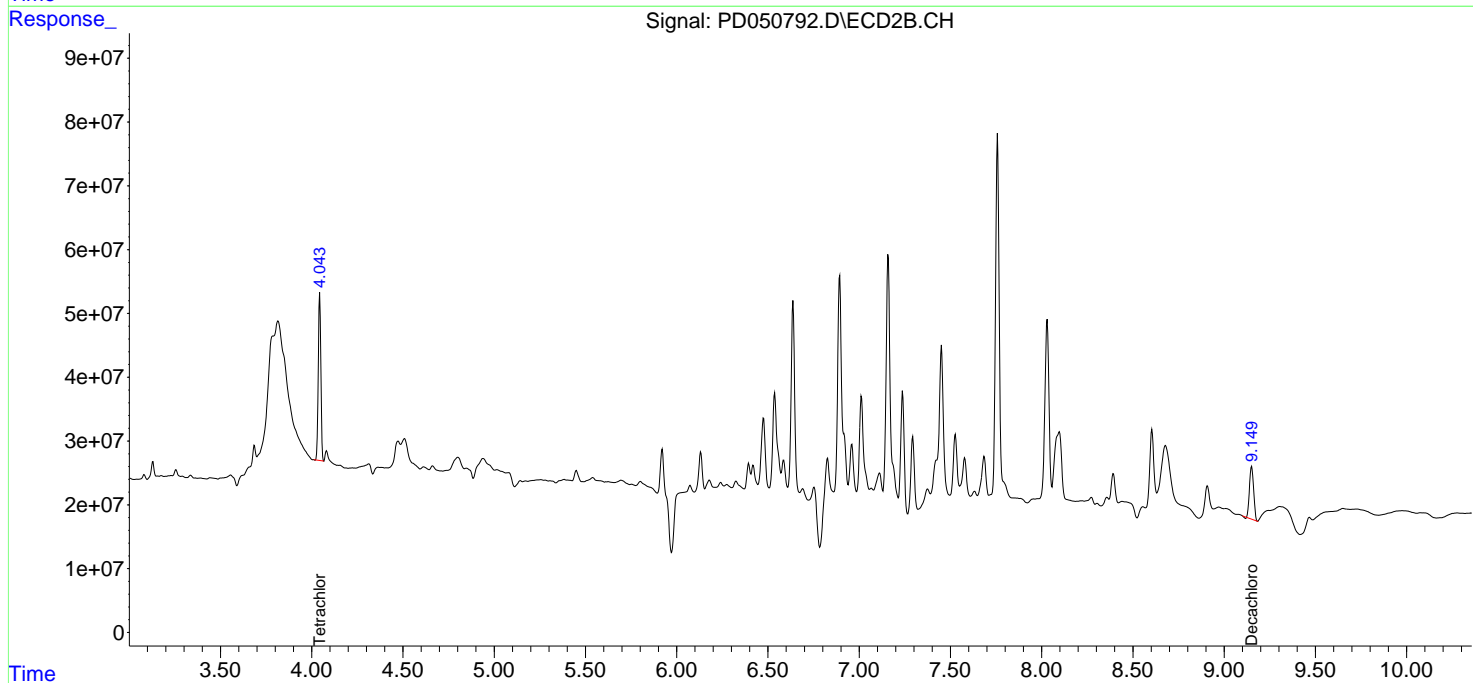
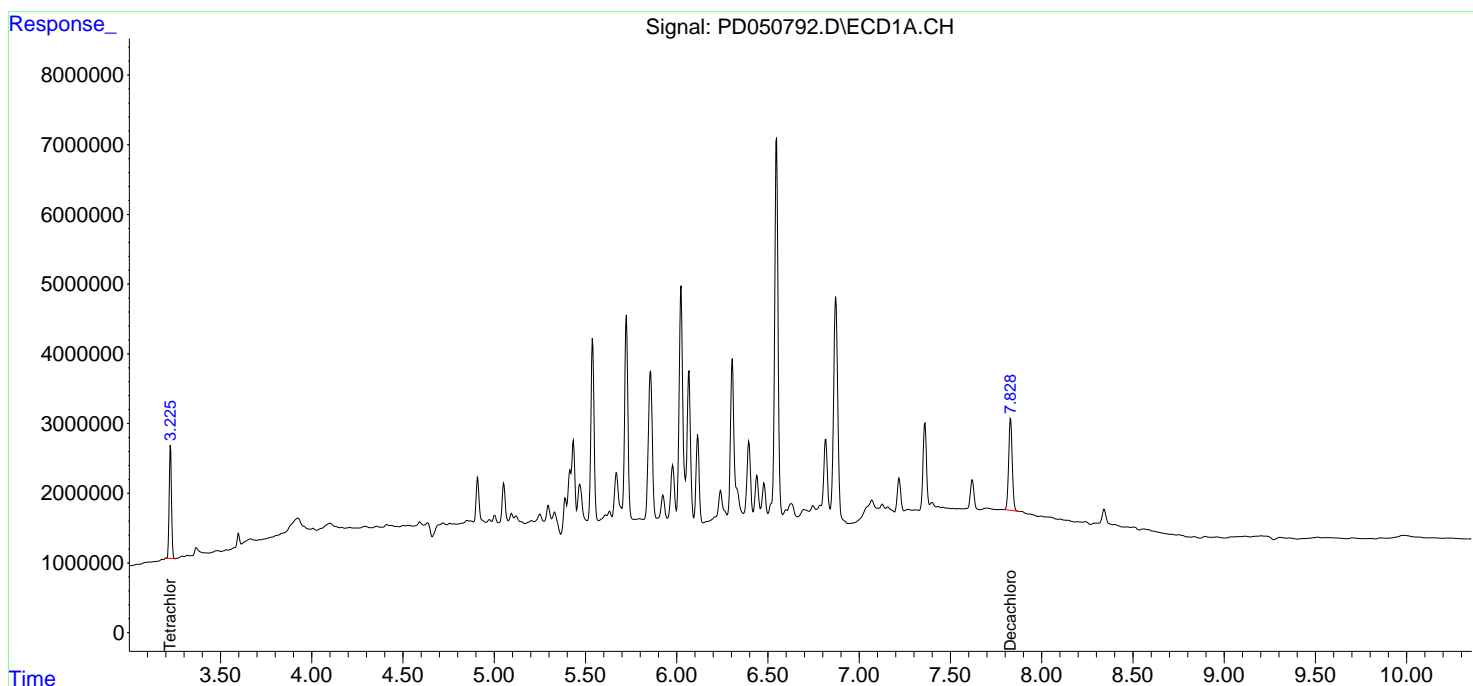
(f)=RT Delta > 1/2 Window (#)=Amounts differ by > 25% (m)=manual int.

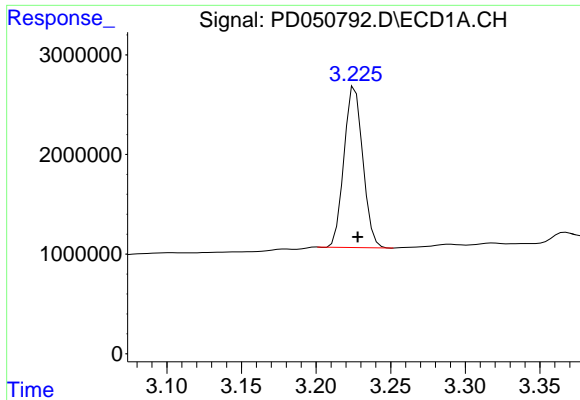
Data Path : Z:\pestpcbsrv\HPCHEM1\ECD_D\Data\PD121218\
 Data File : PD050792.D
 Signal(s) : Signal #1: ECD1A.CH Signal #2: ECD2B.CH
 Acq On : 12 Dec 2018 12:05
 Operator : AJ\SJ
 Sample : J6316-05
 Misc :
 ALS Vial : 10 Sample Multiplier: 1

Instrument :
 ECD_D
ClientSampleId :
 BORING-SAMPLE-CBH-591

Integration File signal 1: autoint1.e
 Integration File signal 2: autoint2.e
 Quant Time: Dec 13 04:29:11 2018
 Quant Method : Z:\pestpcbsrv\HPCHEM1\ECD_D\Method\PD111618.M
 Quant Title : GC Extractables
 QLast Update : Fri Nov 16 02:59:21 2018
 Response via : Initial Calibration
 Integrator: ChemStation 6890 Scale Mode: Large solvent peaks clipped

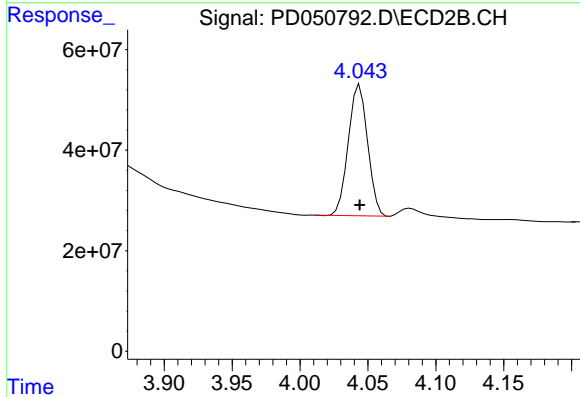
Volume Inj. : 2 µl
 Signal #1 Phase : ZB-MR2 Signal #2 Phase: ZB-MR1
 Signal #1 Info : 30M x 0.32mm x0.2 Signal #2 Info : 30M x 0.32mm x 0.50µm



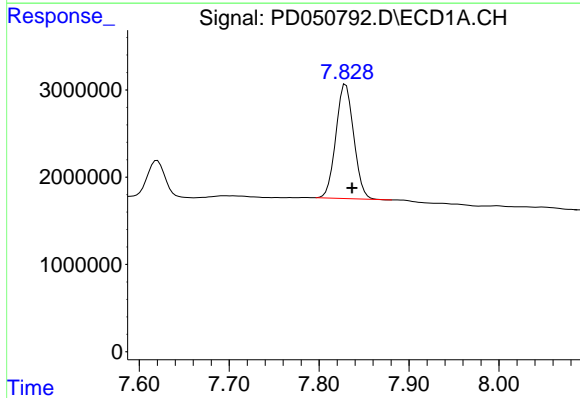


#1 Tetrachloro-m-xylene
 R.T.: 3.226 min
 Delta R.T.: -0.002 min
 Response: 14207481
 Conc: 9.76 ng/ml

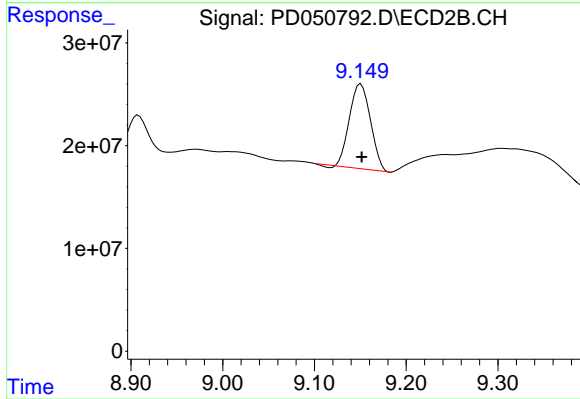
Instrument :
 ECD_D
 ClientSampleId :
 BORING-SAMPLE-CBH-591



#1 Tetrachloro-m-xylene
 R.T.: 4.044 min
 Delta R.T.: 0.000 min
 Response: 258633262
 Conc: 9.39 ng/ml



#28 Decachlorobiphenyl
 R.T.: 7.830 min
 Delta R.T.: -0.007 min
 Response: 18032697
 Conc: 12.18 ng/ml



#28 Decachlorobiphenyl
 R.T.: 9.151 min
 Delta R.T.: -0.001 min
 Response: 130466380
 Conc: 6.45 ng/ml