

Data Path : Z:\pestpcbsrv\HPCHEM1\ECD_D\Data\PD121223\
 Data File : PD080041.D
 Signal(s) : Signal #1: ECD1A.ch Signal #2: ECD2B.ch
 Acq On : 12 Dec 2023 12:47
 Operator : AR\AJ
 Sample : 05718-02
 Misc :
 ALS Vial : 12 Sample Multiplier: 1

Instrument :
 ECD_D
 ClientSampleId :
 WC-SOIL-20231206

Integration File signal 1: autoint1.e
 Integration File signal 2: autoint2.e
 Quant Time: Dec 12 14:01:49 2023
 Quant Method : Z:\pestpcbsrv\HPCHEM1\ECD_D\Method\PD120623.M
 Quant Title : GC Extractables
 QLast Update : Wed Dec 06 14:11:45 2023
 Response via : Initial Calibration
 Integrator: ChemStation

Volume Inj. : 1 µl
 Signal #1 Phase : ZB-MR2 Signal #2 Phase: ZB-MR2
 Signal #1 Info : 30M x 0.32mm x0.5 Signal #2 Info : 30M x 0.32mm x 0.25µm

Compound	RT#1	RT#2	Resp#1	Resp#2	ng/ml	ng/ml

System Monitoring Compounds						
1) SA Tetrachlo...	3.568	2.801	25394969	41340025	16.849	16.445
28) SA Decachlor...	9.111	7.942	33296490	40374632	16.449	14.323
Target Compounds						
3) MA gamma-BHC...	4.343	0.000	974446	0	0.411	N.D. #
4) MA Heptachlor	4.966f	0.000	386647	0	0.157	N.D. #
5) MB Aldrin	0.000	4.226f	0	1891737	N.D.	0.531 #
6) B beta-BHC	4.533f	0.000	256454	0	0.256	N.D. #
7) B delta-BHC	4.794	4.177f	7174561	752736	2.930	0.200 #
8) B Heptachlo...	5.714	0.000	1874825	0	0.851	N.D. #
9) A Endosulfan I	6.126f	0.000	797194	0	0.388	N.D. #
12) B 4,4'-DDE	6.219	0.000	331881	0	0.166	N.D. #
13) MA Dieldrin	6.388	5.391	1100179	191249	0.504	0.058 #
14) MA Endrin	0.000	5.680	0	215662	N.D.	0.077 #
15) B Endosulfa...	6.829	0.000	165775	0	0.087	N.D. #
19) B Endosulfa...	7.184	6.335f	395899	1008222	0.209	0.376 #
21) B Endrin ke...	7.707f	0.000	705740	0	0.341	N.D. #
23) Chlordane-1	0.000	3.812	0	549105	N.D.	5.704 #
24) Chlordane-2	0.000	4.352f	0	81335	N.D.	0.712 #
27) Chlordane-5	6.904	0.000	316296	0	4.675	N.D. #

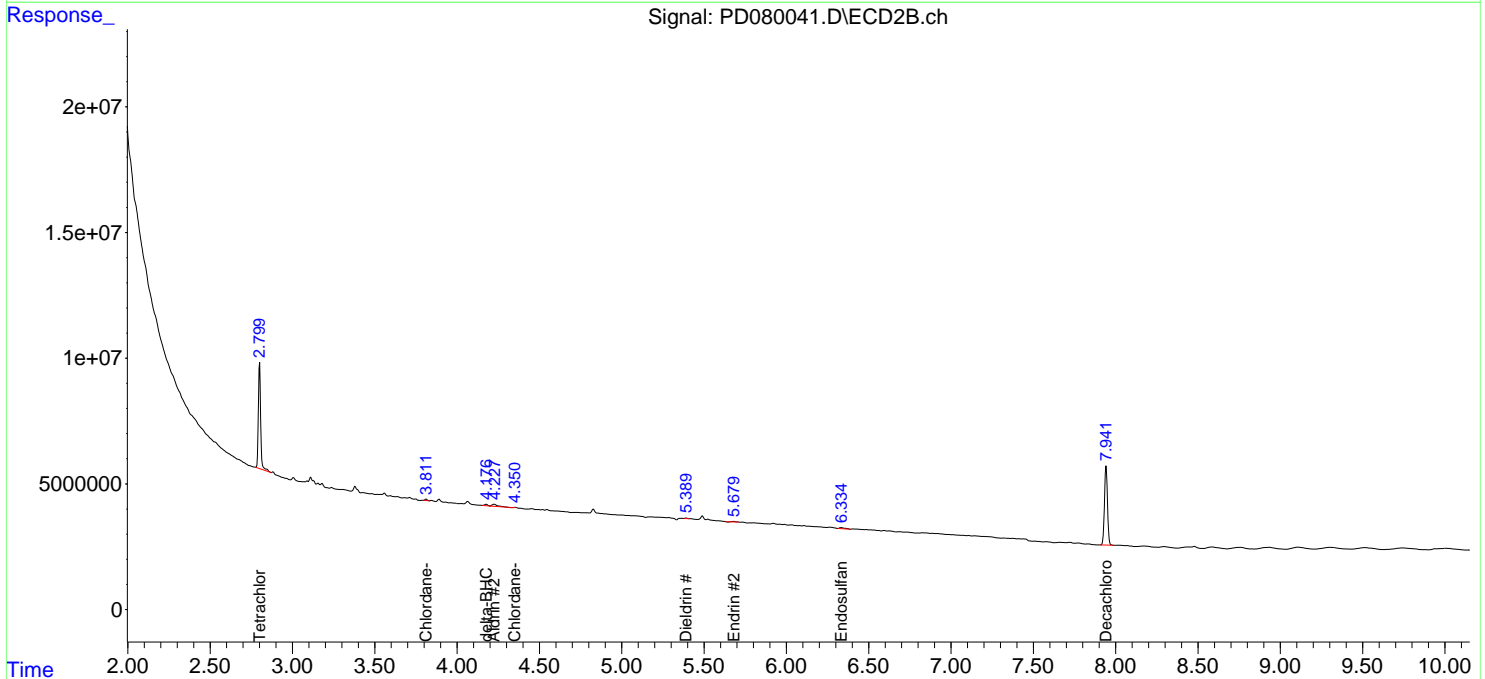
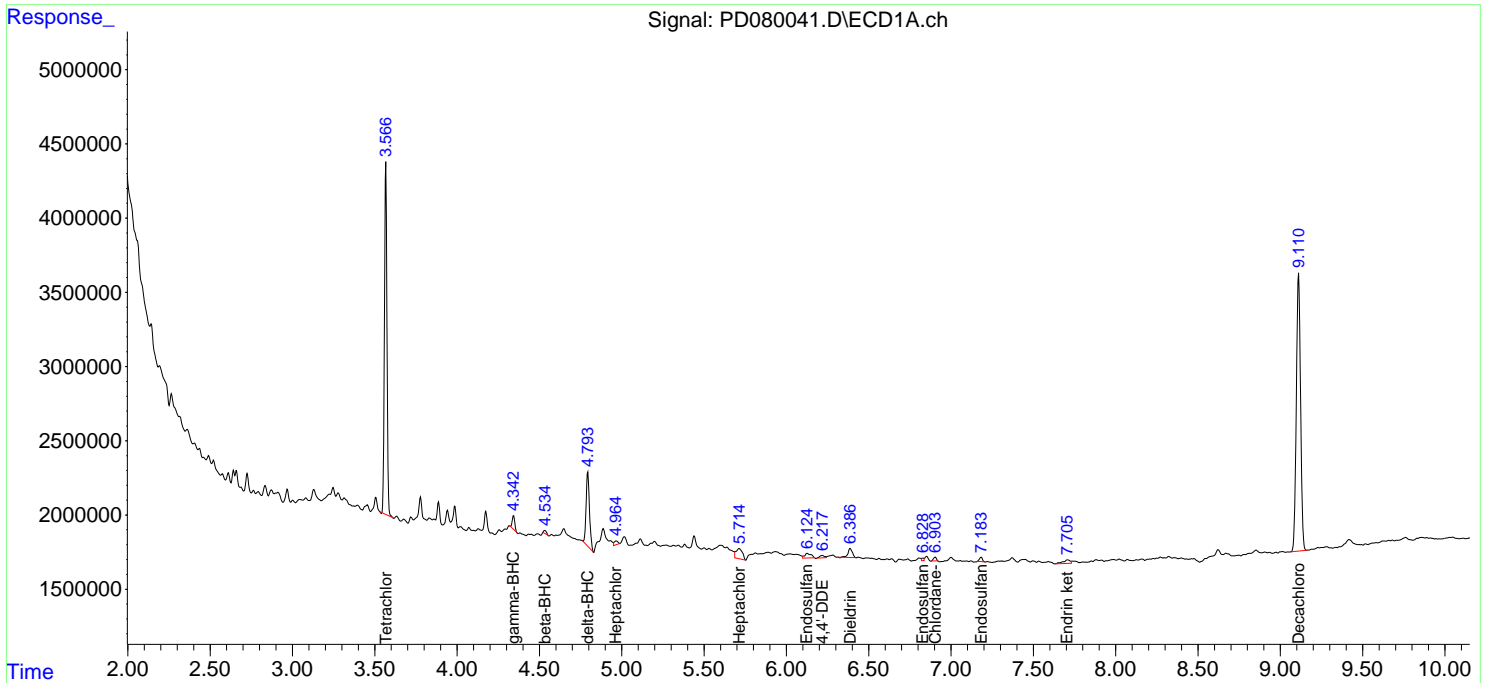
(f)=RT Delta > 1/2 Window (#)=Amounts differ by > 25% (m)=manual int.

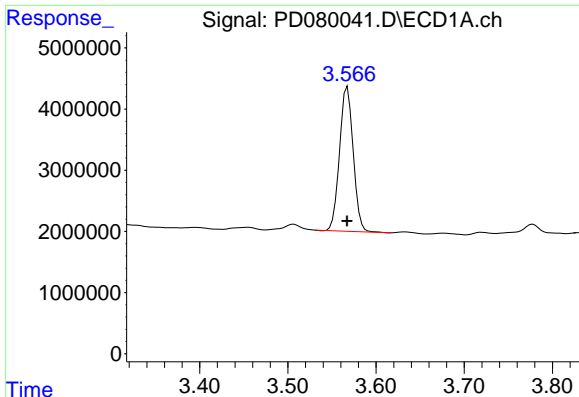
Data Path : Z:\pestpcbsrv\HPCHEM1\ECD_D\Data\PD121223\
 Data File : PD080041.D
 Signal(s) : Signal #1: ECD1A.ch Signal #2: ECD2B.ch
 Acq On : 12 Dec 2023 12:47
 Operator : AR\AJ
 Sample : 05718-02
 Misc :
 ALS Vial : 12 Sample Multiplier: 1

Instrument :
 ECD_D
 ClientSampleId :
 WC-SOIL-20231206

Integration File signal 1: autoint1.e
 Integration File signal 2: autoint2.e
 Quant Time: Dec 12 14:01:49 2023
 Quant Method : Z:\pestpcbsrv\HPCHEM1\ECD_D\Method\PD120623.M
 Quant Title : GC Extractables
 QLast Update : Wed Dec 06 14:11:45 2023
 Response via : Initial Calibration
 Integrator: ChemStation

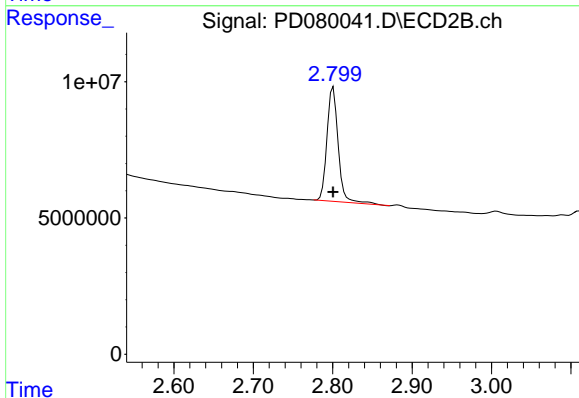
Volume Inj. : 1 µl
 Signal #1 Phase : ZB-MR1 Signal #2 Phase: ZB-MR2
 Signal #1 Info : 30M x 0.32mm x0.5 Signal #2 Info : 30M x 0.32mm x 0.25µm



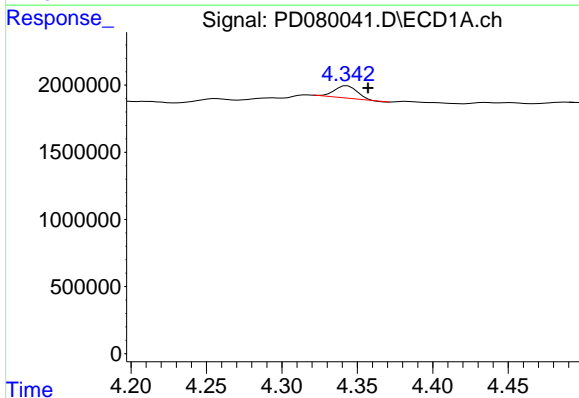


#1 Tetrachloro-m-xylene
 R.T.: 3.568 min
 Delta R.T.: 0.000 min
 Response: 25394969
 Conc: 16.85 ng/ml

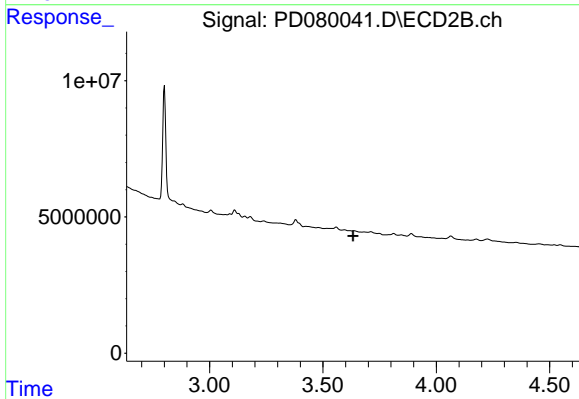
Instrument :
 ECD_D
 ClientSampleId :
 WC-SOIL-20231206



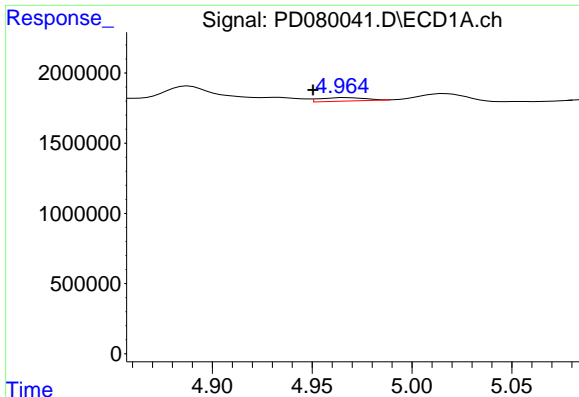
#1 Tetrachloro-m-xylene
 R.T.: 2.801 min
 Delta R.T.: 0.000 min
 Response: 41340025
 Conc: 16.45 ng/ml



#3 gamma-BHC (Lindane)
 R.T.: 4.343 min
 Delta R.T.: -0.014 min
 Response: 974446
 Conc: 0.41 ng/ml



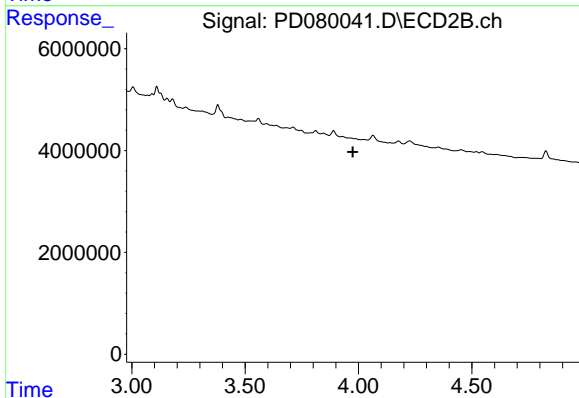
#3 gamma-BHC (Lindane)
 R.T.: 0.000 min
 Exp R.T. : 3.633 min
 Response: 0
 Conc: N.D.



#4 Heptachlor

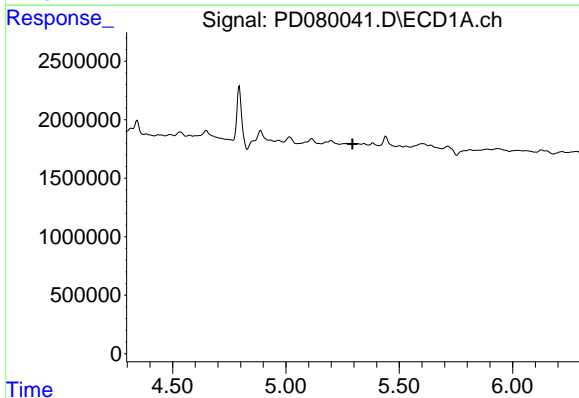
R.T.: 4.966 min
 Delta R.T.: 0.016 min
 Response: 386647
 Conc: 0.16 ng/ml

Instrument :
 ECD_D
 ClientSampleId :
 WC-SOIL-20231206



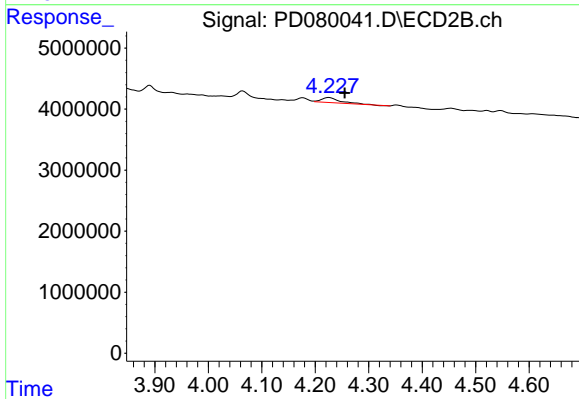
#4 Heptachlor

R.T.: 0.000 min
 Exp R.T. : 3.975 min
 Response: 0
 Conc: N.D.



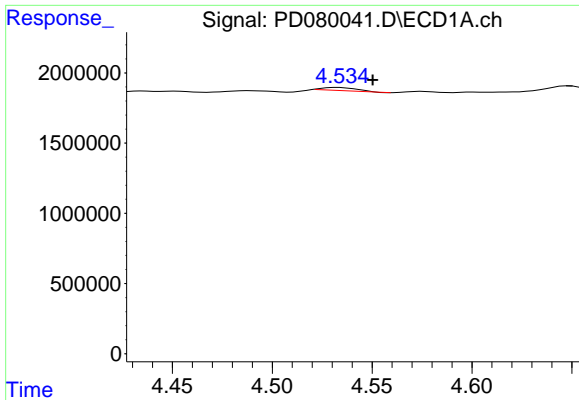
#5 Aldrin

R.T.: 0.000 min
 Exp R.T. : 5.294 min
 Response: 0
 Conc: N.D.



#5 Aldrin

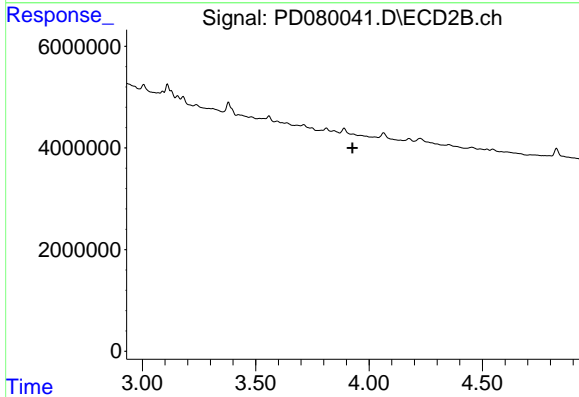
R.T.: 4.226 min
 Delta R.T.: -0.029 min
 Response: 1891737
 Conc: 0.53 ng/ml



#6 beta-BHC

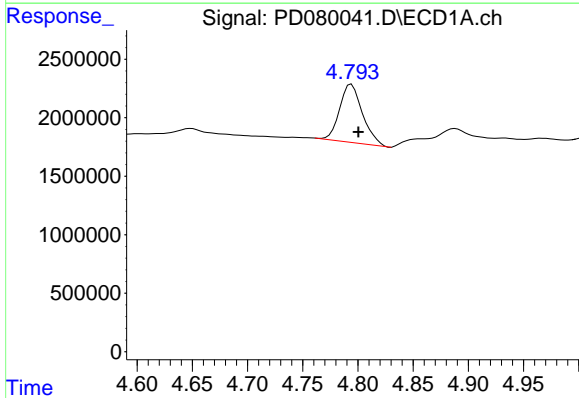
R.T.: 4.533 min
 Delta R.T.: -0.017 min
 Response: 256454
 Conc: 0.26 ng/ml

Instrument : ECD_D
 ClientSampleId : WC-SOIL-20231206



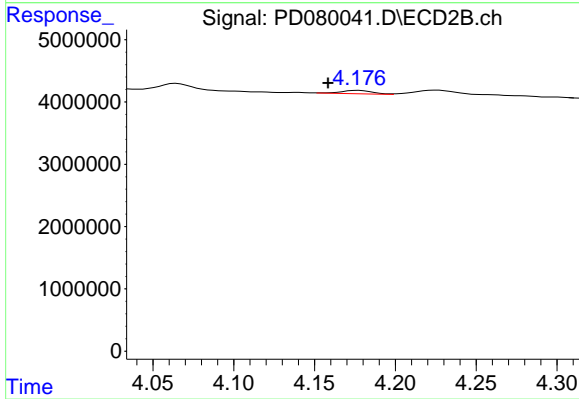
#6 beta-BHC

R.T.: 0.000 min
 Exp R.T. : 3.927 min
 Response: 0
 Conc: N.D.



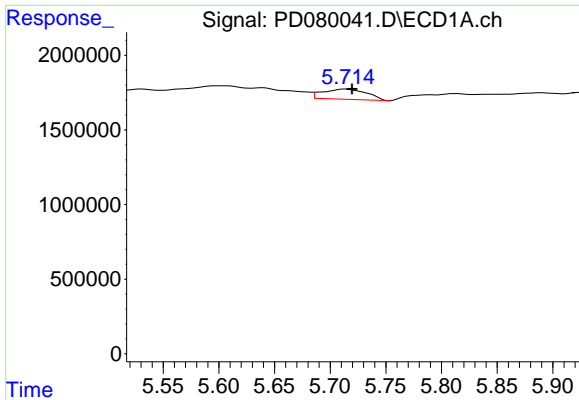
#7 delta-BHC

R.T.: 4.794 min
 Delta R.T.: -0.006 min
 Response: 7174561
 Conc: 2.93 ng/ml



#7 delta-BHC

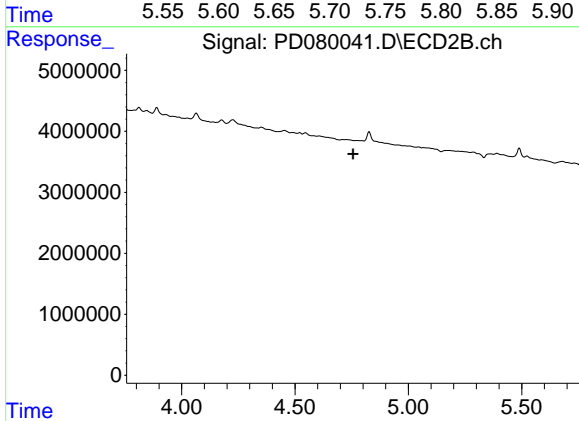
R.T.: 4.177 min
 Delta R.T.: 0.019 min
 Response: 752736
 Conc: 0.20 ng/ml



#8 Heptachlor epoxide

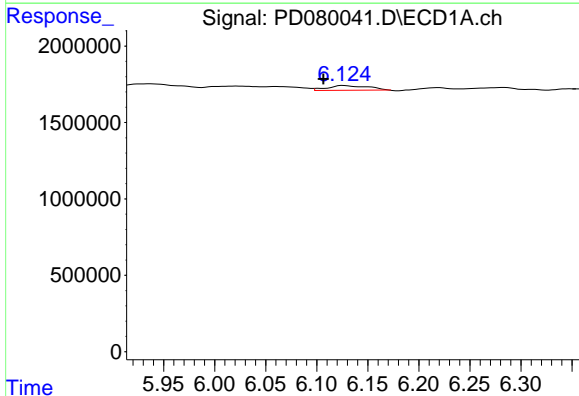
R.T.: 5.714 min
 Delta R.T.: -0.006 min
 Response: 1874825
 Conc: 0.85 ng/ml

Instrument :
 ECD_D
 ClientSampleId :
 WC-SOIL-20231206



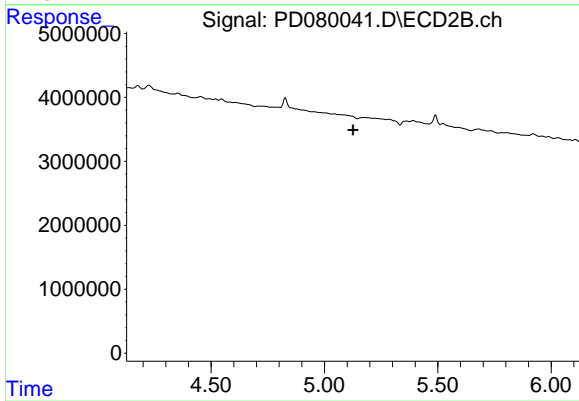
#8 Heptachlor epoxide

R.T.: 0.000 min
 Exp R.T. : 4.756 min
 Response: 0
 Conc: N.D.



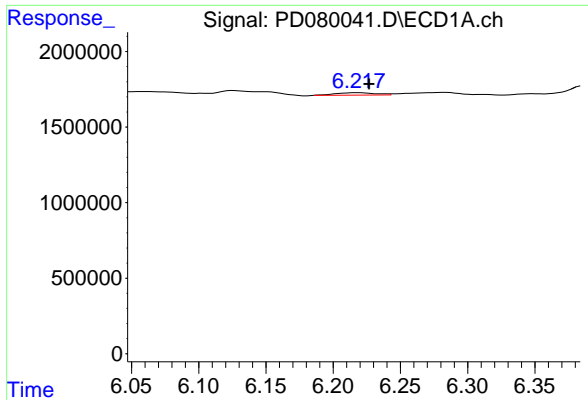
#9 Endosulfan I

R.T.: 6.126 min
 Delta R.T.: 0.019 min
 Response: 797194
 Conc: 0.39 ng/ml



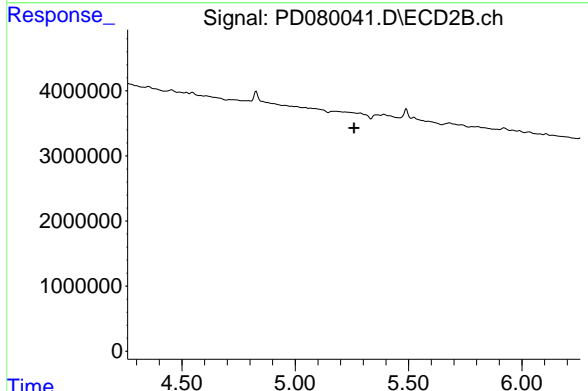
#9 Endosulfan I

R.T.: 0.000 min
 Exp R.T. : 5.126 min
 Response: 0
 Conc: N.D.

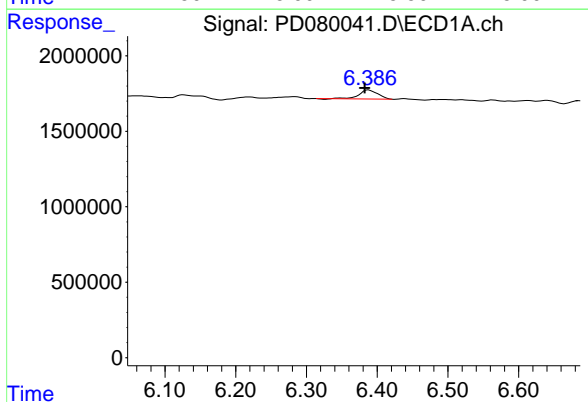


#12 4,4'-DDE
 R.T.: 6.219 min
 Delta R.T.: -0.007 min
 Response: 331881
 Conc: 0.17 ng/ml

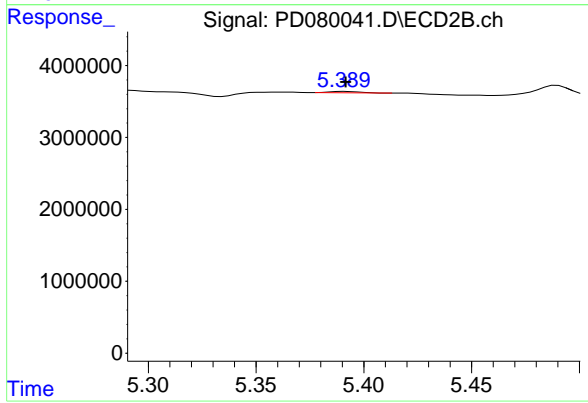
Instrument : ECD_D
 ClientSampleId : WC-SOIL-20231206



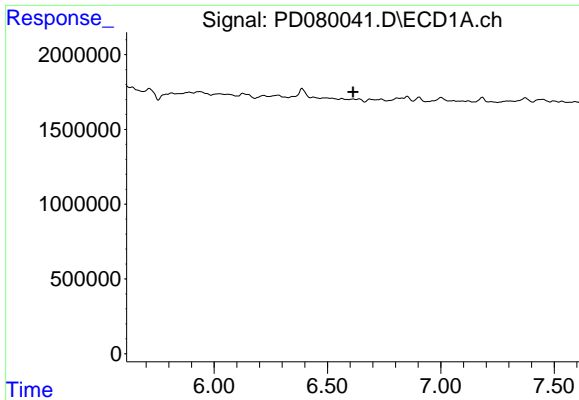
#12 4,4'-DDE
 R.T.: 0.000 min
 Exp R.T. : 5.260 min
 Response: 0
 Conc: N.D.



#13 Dieldrin
 R.T.: 6.388 min
 Delta R.T.: 0.005 min
 Response: 1100179
 Conc: 0.50 ng/ml



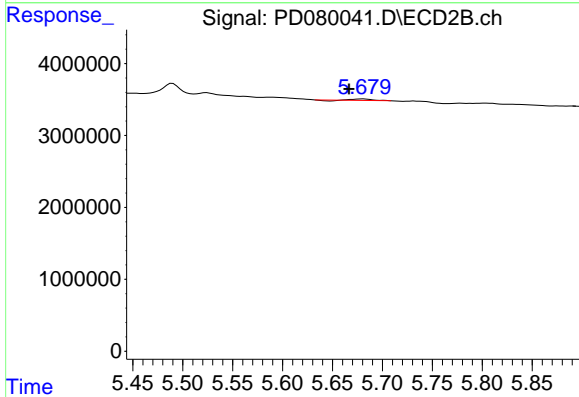
#13 Dieldrin
 R.T.: 5.391 min
 Delta R.T.: 0.000 min
 Response: 191249
 Conc: 0.06 ng/ml



#14 Endrin

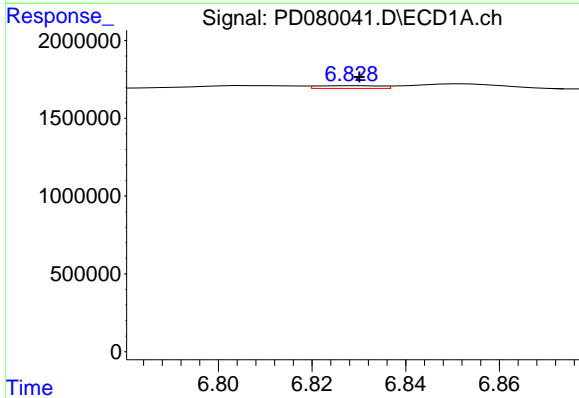
R.T.: 0.000 min
 Exp R.T.: 6.613 min
 Response: 0
 Conc: N.D.

Instrument : ECD_D
 ClientSampleId : WC-SOIL-20231206



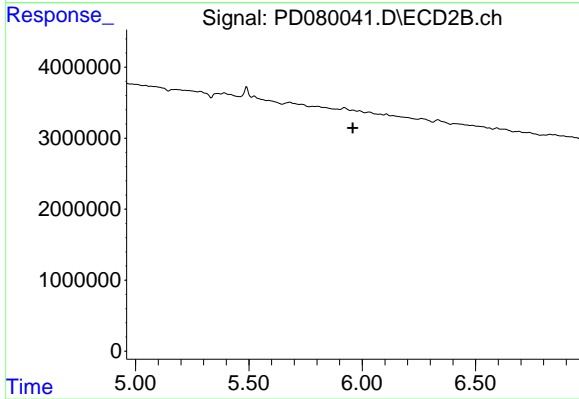
#14 Endrin

R.T.: 5.680 min
 Delta R.T.: 0.014 min
 Response: 215662
 Conc: 0.08 ng/ml



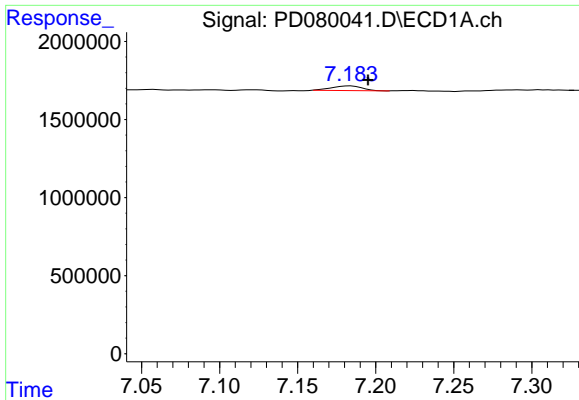
#15 Endosulfan II

R.T.: 6.829 min
 Delta R.T.: 0.000 min
 Response: 165775
 Conc: 0.09 ng/ml



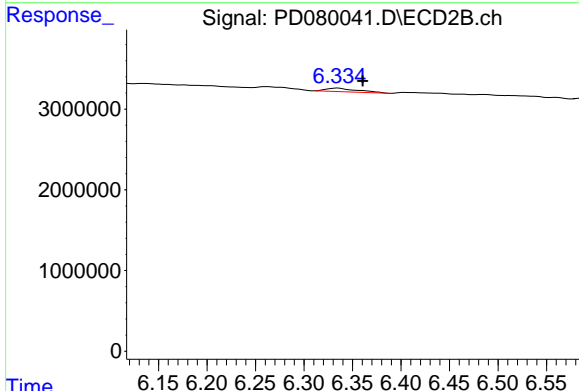
#15 Endosulfan II

R.T.: 0.000 min
 Exp R.T.: 5.959 min
 Response: 0
 Conc: N.D.

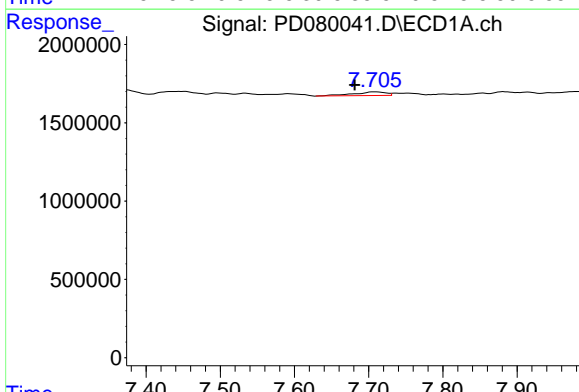


#19 Endosulfan Sulfate
 R.T.: 7.184 min
 Delta R.T.: -0.011 min
 Response: 395899
 Conc: 0.21 ng/ml

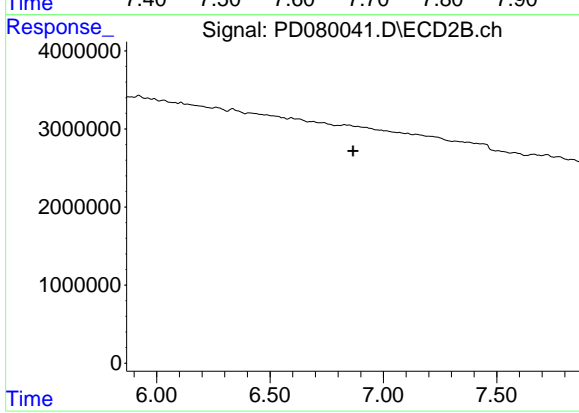
Instrument : ECD_D
 ClientSampleId : WC-SOIL-20231206



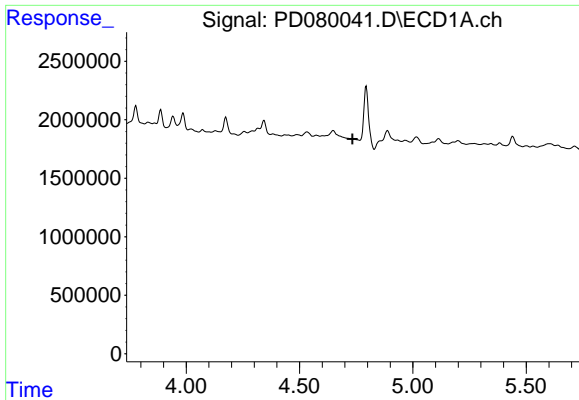
#19 Endosulfan Sulfate
 R.T.: 6.335 min
 Delta R.T.: -0.026 min
 Response: 1008222
 Conc: 0.38 ng/ml



#21 Endrin ketone
 R.T.: 7.707 min
 Delta R.T.: 0.025 min
 Response: 705740
 Conc: 0.34 ng/ml



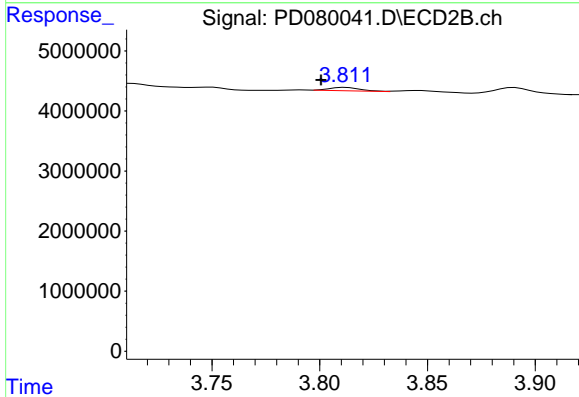
#21 Endrin ketone
 R.T.: 0.000 min
 Exp R.T. : 6.867 min
 Response: 0
 Conc: N.D.



#23 Chlordane-1

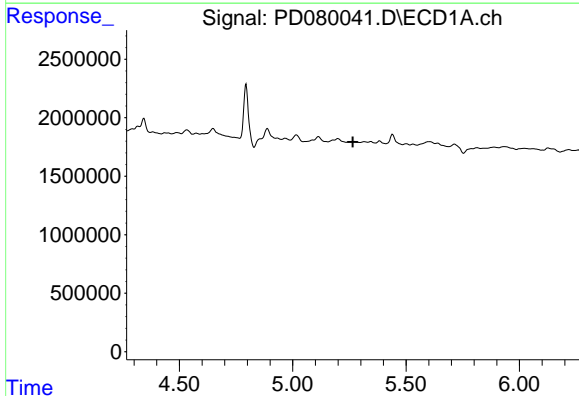
R.T.: 0.000 min
 Exp R.T. : 4.734 min
 Response: 0
 Conc: N.D.

Instrument :
 ECD_D
 ClientSampleId :
 WC-SOIL-20231206



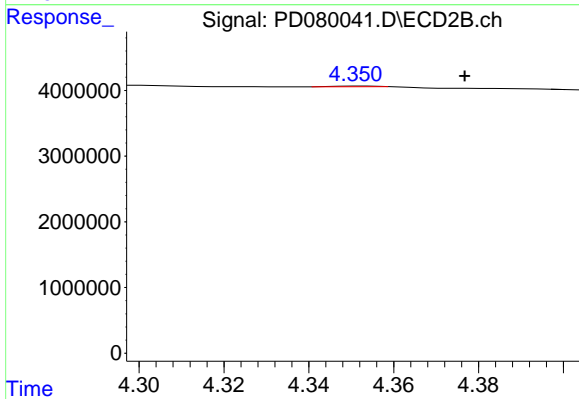
#23 Chlordane-1

R.T.: 3.812 min
 Delta R.T.: 0.012 min
 Response: 549105
 Conc: 5.70 ng/ml



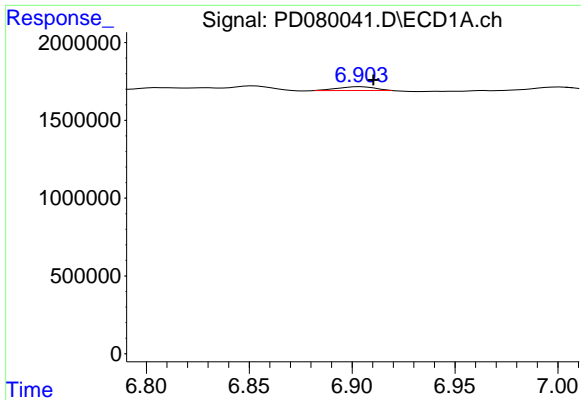
#24 Chlordane-2

R.T.: 0.000 min
 Exp R.T. : 5.265 min
 Response: 0
 Conc: N.D.



#24 Chlordane-2

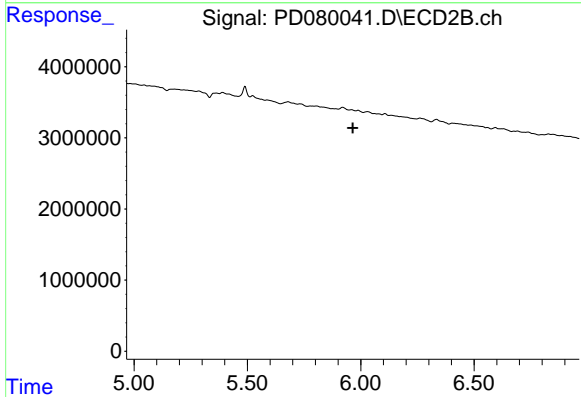
R.T.: 4.352 min
 Delta R.T.: -0.024 min
 Response: 81335
 Conc: 0.71 ng/ml



#27 Chlordane-5

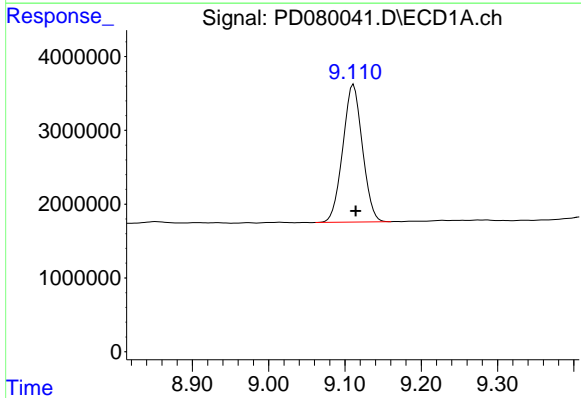
R.T.: 6.904 min
 Delta R.T.: -0.006 min
 Response: 316296
 Conc: 4.68 ng/ml

Instrument :
 ECD_D
 ClientSampleId :
 WC-SOIL-20231206



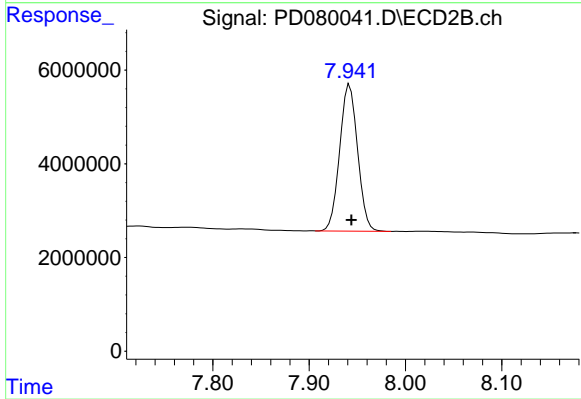
#27 Chlordane-5

R.T.: 0.000 min
 Exp R.T. : 5.966 min
 Response: 0
 Conc: N.D.



#28 Decachlorobiphenyl

R.T.: 9.111 min
 Delta R.T.: -0.003 min
 Response: 33296490
 Conc: 16.45 ng/ml



#28 Decachlorobiphenyl

R.T.: 7.942 min
 Delta R.T.: -0.002 min
 Response: 40374632
 Conc: 14.32 ng/ml