

Data Path : Z:\pestpcbsrv\HPCHEM1\ECD\_D\Data\PD121318\  
 Data File : PD050834.D  
 Signal(s) : Signal #1: ECD1A.CH Signal #2: ECD2B.CH  
 Acq On : 13 Dec 2018 10:35  
 Operator : AJ\SJ  
 Sample : J6332-11  
 Misc :  
 ALS Vial : 7 Sample Multiplier: 1

Instrument :  
 ECD\_D  
 ClientSampleId :

Integration File signal 1: autoint1.e  
 Integration File signal 2: autoint2.e  
 Quant Time: Dec 14 04:15:38 2018  
 Quant Method : Z:\pestpcbsrv\HPCHEM1\ECD\_D\Method\PD120318CLP.M  
 Quant Title : GC Extractables  
 QLast Update : Tue Dec 04 00:43:01 2018  
 Response via : Initial Calibration  
 Integrator: ChemStation 6890 Scale Mode: Large solvent peaks clipped

Volume Inj. : 1 µl  
 Signal #1 Phase : ZB-MR2 Signal #2 Phase: ZB-MR1  
 Signal #1 Info : 30M x 0.32mm x0.2 Signal #2 Info : 30M x 0.32mm x 0.50µm

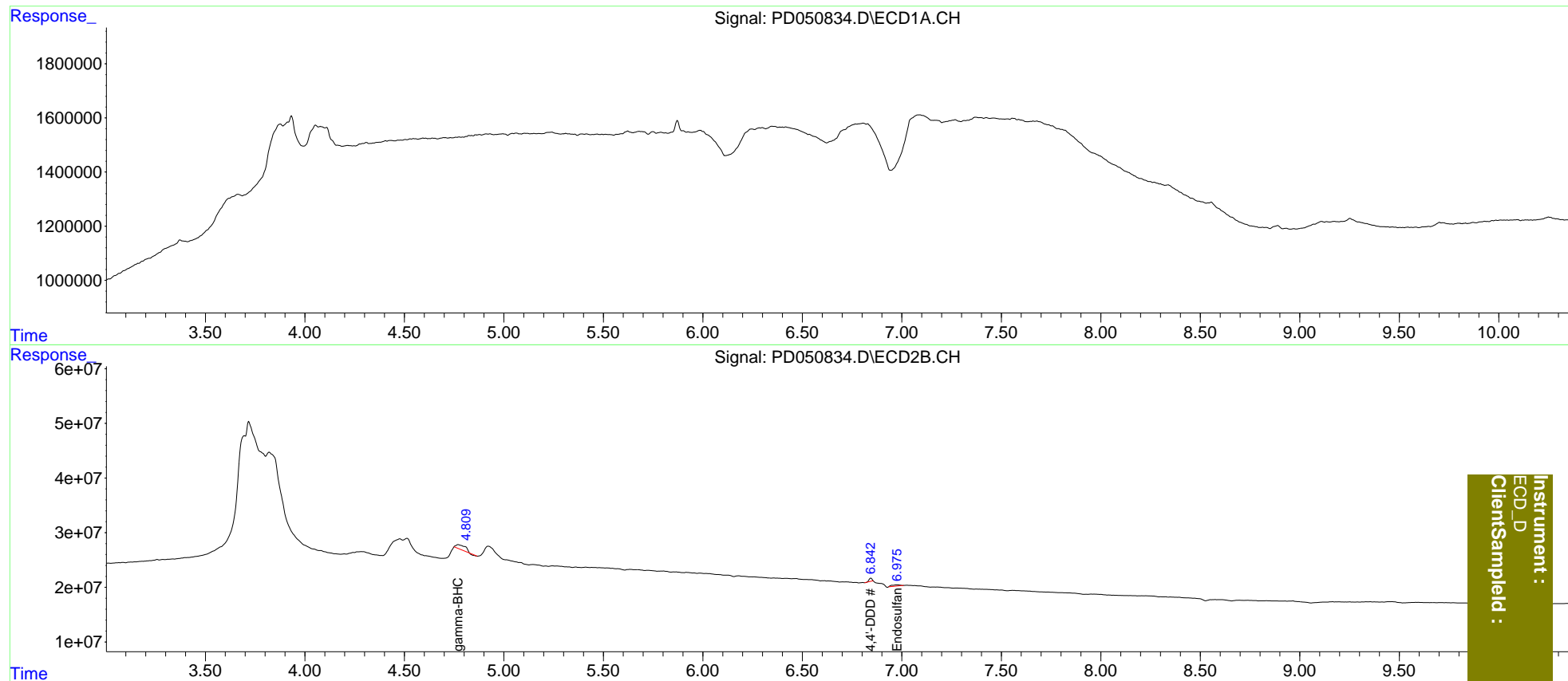
Compound	RT#1	RT#2	Resp#1	Resp#2	ng/ml	ng/ml
-----						
System Monitoring Compounds						
Target Compounds						
3) MA gamma-BHC...	0.000	4.770f	0	24698263	N.D.	0.625
15) B Endosulfa...	0.000	6.975	0	6776754	N.D.	0.270
16) A 4,4'-DDD	0.000	6.845f	0	6015448	N.D.	0.247
-----						

(f)=RT Delta > 1/2 Window (#)=Amounts differ by > 25% (m)=manual int.

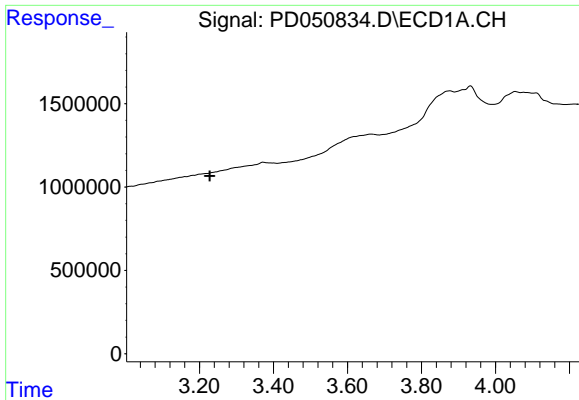
Data Path : Z:\pestpcbsrv\HPCHEM1\ECD\_D\Data\PD121318\  
 Data File : PD050834.D  
 Signal(s) : Signal #1: ECD1A.CH Signal #2: ECD2B.CH  
 Acq On : 13 Dec 2018 10:35  
 Operator : AJ\SJ  
 Sample : J6332-11  
 Misc :  
 ALS Vial : 7 Sample Multiplier: 1

Integration File signal 1: autoint1.e  
 Integration File signal 2: autoint2.e  
 Quant Time: Dec 14 04:15:38 2018  
 Quant Method : Z:\pestpcbsrv\HPCHEM1\ECD\_D\Method\PD120318CLP.M  
 Quant Title : GC Extractables  
 QLast Update : Tue Dec 04 00:43:01 2018  
 Response via : Initial Calibration  
 Integrator: ChemStation 6890 Scale Mode: Large solvent peaks clipped

Volume Inj. : 1 µl  
 Signal #1 Phase : ZB-MR2 Signal #2 Phase: ZB-MR1  
 Signal #1 Info : 30M x 0.32mm x 0.2 Signal #2 Info : 30M x 0.32mm x 0.50µm

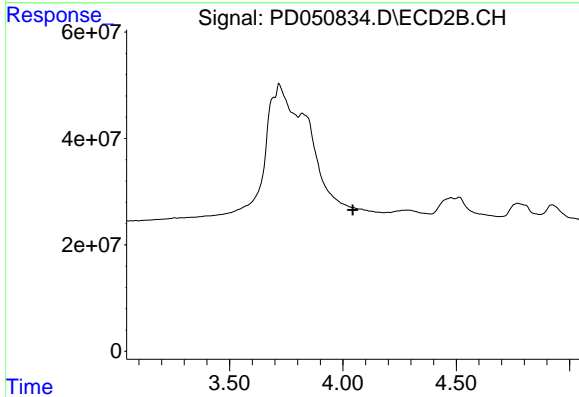


Instrument :  
 ECD\_D  
 ClientSampleId :

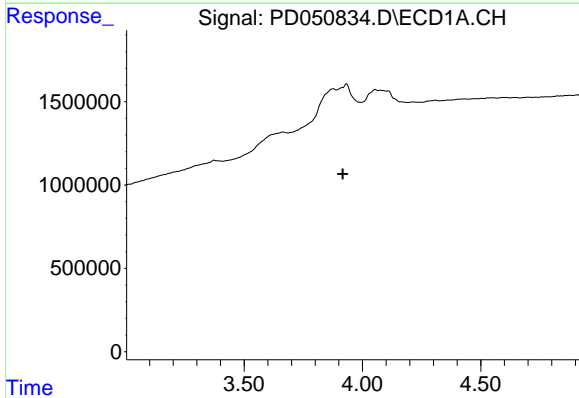


#1 Tetrachloro-m-xylene  
 R.T.: 0.000 min  
 Exp R.T. : 3.228 min  
 Response: 0  
 Conc: N.D.

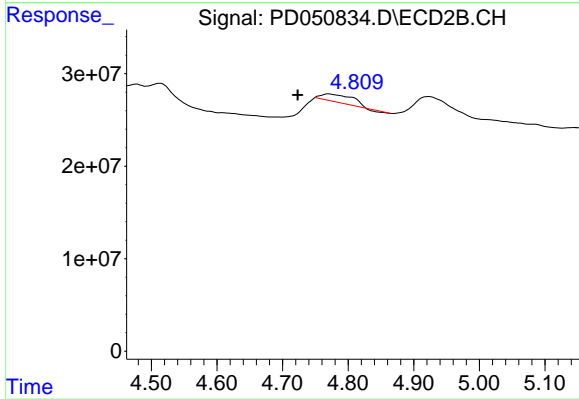
Instrument :  
 ECD\_D  
 ClientSampleId :



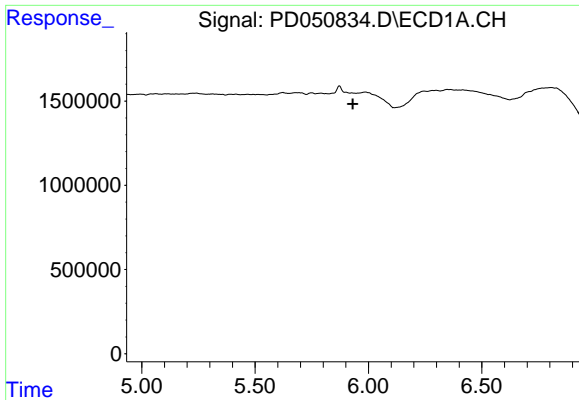
#1 Tetrachloro-m-xylene  
 R.T.: 0.000 min  
 Exp R.T. : 4.044 min  
 Response: 0  
 Conc: N.D.



#3 gamma-BHC (Lindane)  
 R.T.: 0.000 min  
 Exp R.T. : 3.917 min  
 Response: 0  
 Conc: N.D.

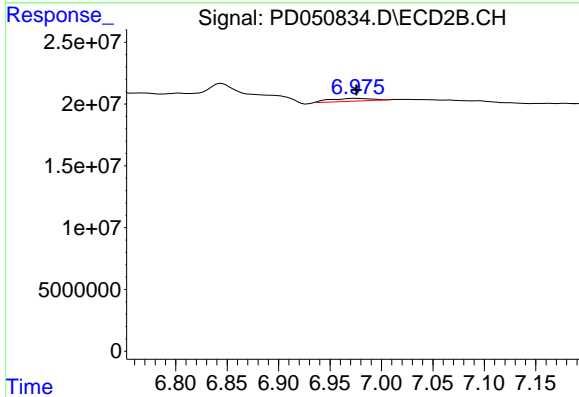


#3 gamma-BHC (Lindane)  
 R.T.: 4.770 min  
 Delta R.T.: 0.047 min  
 Response: 24698263  
 Conc: 0.63 ng/ml

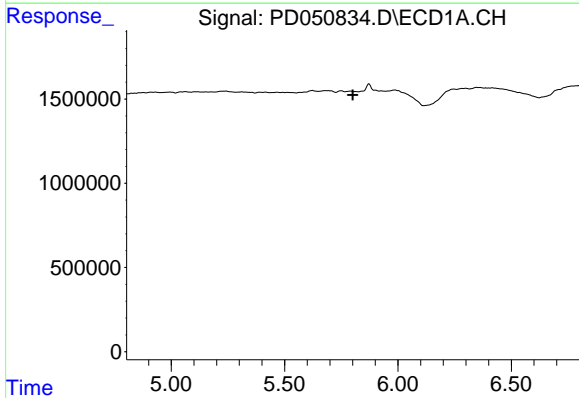


#15 Endosulfan II  
 R.T.: 0.000 min  
 Exp R.T. : 5.931 min  
 Response: 0  
 Conc: N.D.

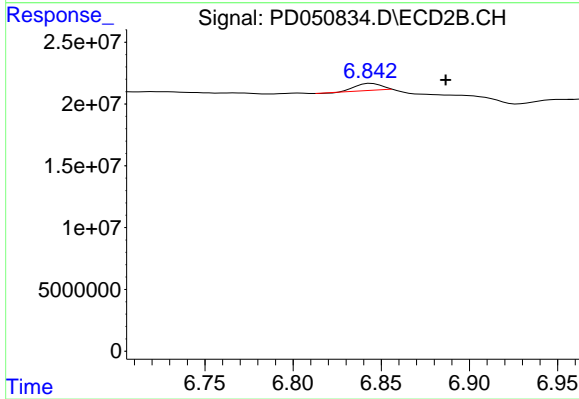
Instrument :  
 ECD\_D  
 ClientSampleId :



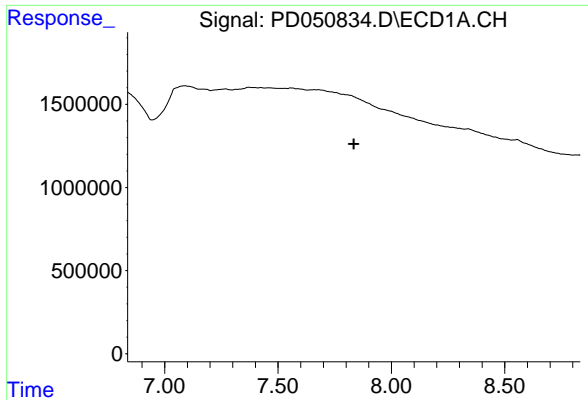
#15 Endosulfan II  
 R.T.: 6.975 min  
 Delta R.T.: 0.000 min  
 Response: 6776754  
 Conc: 0.27 ng/ml



#16 4,4'-DDD  
 R.T.: 0.000 min  
 Exp R.T. : 5.801 min  
 Response: 0  
 Conc: N.D.



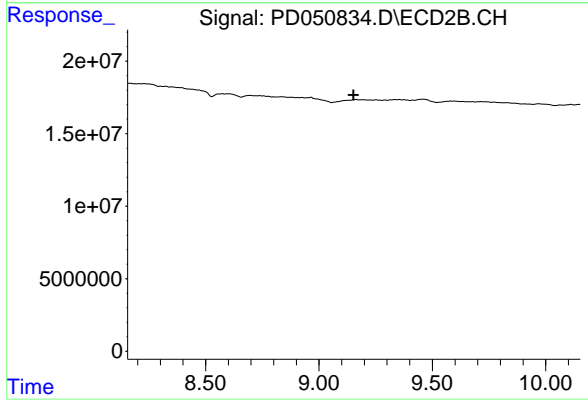
#16 4,4'-DDD  
 R.T.: 6.845 min  
 Delta R.T.: -0.042 min  
 Response: 6015448  
 Conc: 0.25 ng/ml



#27 Decachlorobiphenyl

R.T.: 0.000 min  
Exp R.T. : 7.834 min  
Response: 0  
Conc: N.D.

Instrument :  
ECD\_D  
ClientSampleId :



#27 Decachlorobiphenyl

R.T.: 0.000 min  
Exp R.T. : 9.153 min  
Response: 0  
Conc: N.D.