

Data Path : Z:\pestpcbsrv\HPCHEM1\ECD_D\Data\PD121321\
 Data File : PD067268.D
 Signal(s) : Signal #1: ECD1A.ch Signal #2: ECD2B.ch
 Acq On : 13 Dec 2021 08:51
 Operator : AR\AJ
 Sample : I.BLK
 Misc :
 ALS Vial : 2 Sample Multiplier: 1

Instrument :
 ECD_D
 ClientSampleId :
 I.BLK

Integration File signal 1: autoint1.e
 Integration File signal 2: autoint2.e
 Quant Time: Dec 14 02:22:14 2021
 Quant Method : Z:\pestpcbsrv\HPCHEM1\ECD_D\Method\PD113021.M
 Quant Title : GC Extractables
 QLast Update : Tue Nov 30 17:33:19 2021
 Response via : Initial Calibration
 Integrator: ChemStation

Volume Inj. : 2 µl
 Signal #1 Phase : ZB-MR2 Signal #2 Phase: ZB-MR1
 Signal #1 Info : 30M x 0.32mm x0.2 Signal #2 Info : 30M x 0.32mm x 0.50µm

Compound	RT#1	RT#2	Resp#1	Resp#2	ng/ml	ng/ml

System Monitoring Compounds						
1) SA Tetrachlo...	3.436	3.965	37859282	177.5E6	18.322	24.460 #
28) SA Decachlor...	8.160	9.025	17564015	95174189	15.502	18.932

Target Compounds

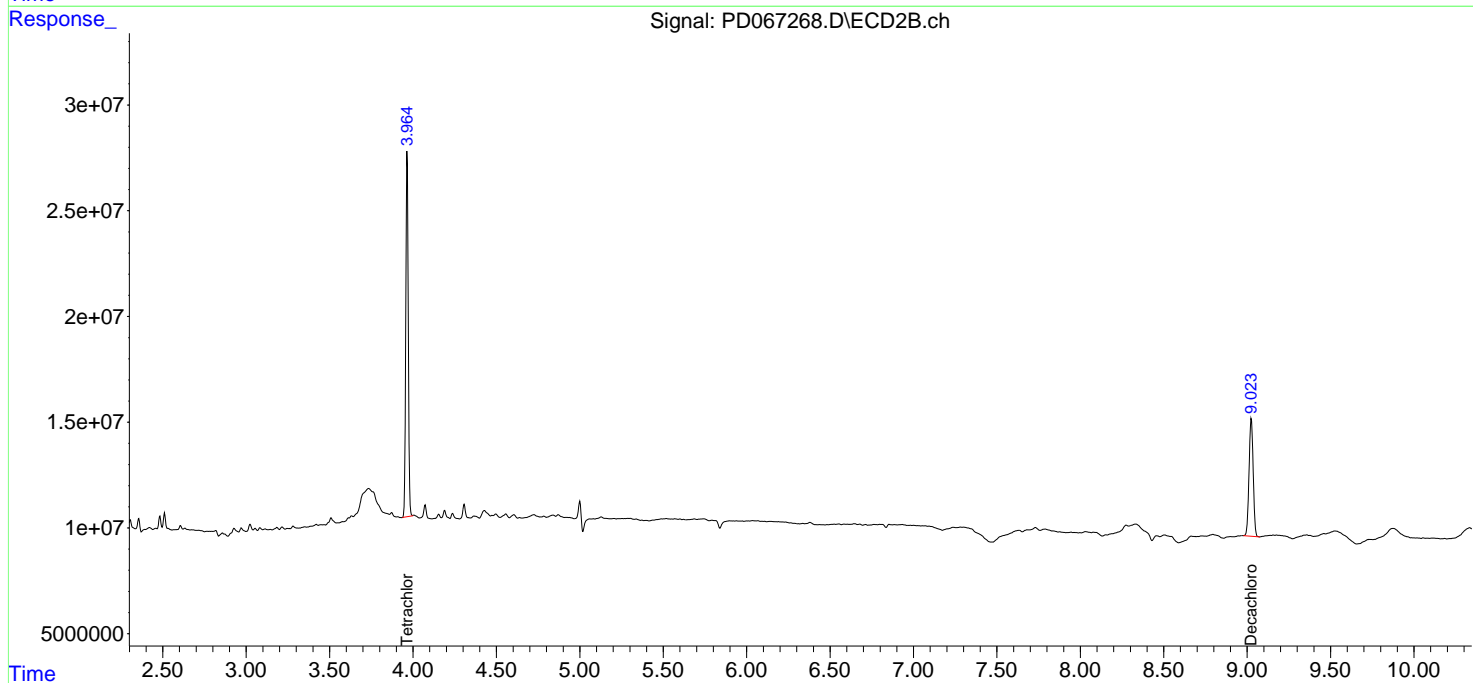
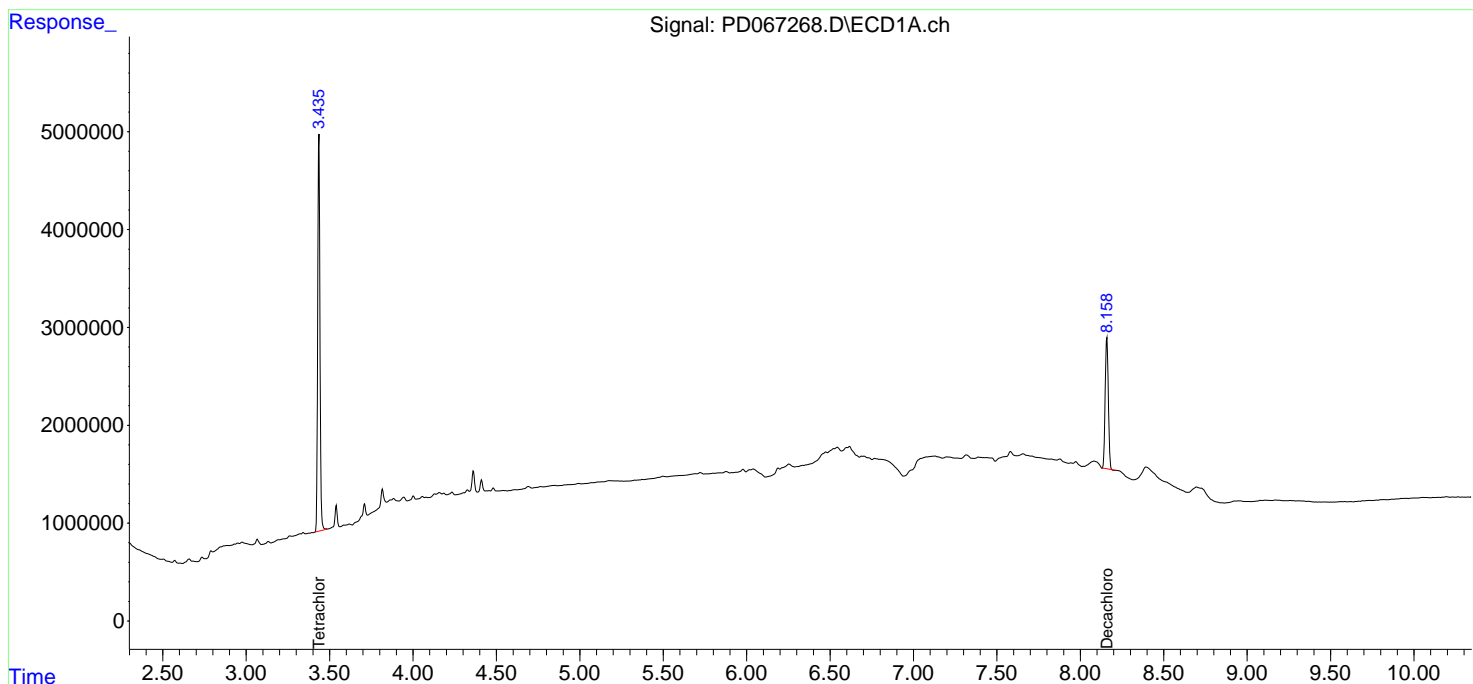
(f)=RT Delta > 1/2 Window (#)=Amounts differ by > 25% (m)=manual int.

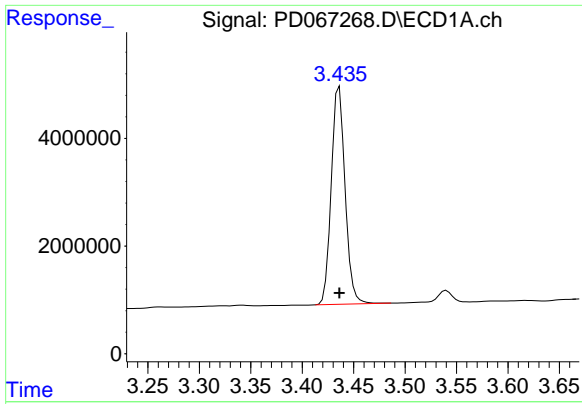
Data Path : Z:\pestpcbsrv\HPCHEM1\ECD_D\Data\PD121321\
 Data File : PD067268.D
 Signal(s) : Signal #1: ECD1A.ch Signal #2: ECD2B.ch
 Acq On : 13 Dec 2021 08:51
 Operator : AR\AJ
 Sample : I.BLK
 Misc :
 ALS Vial : 2 Sample Multiplier: 1

Instrument :
 ECD_D
 ClientSampleId :
 I.BLK

Integration File signal 1: autoint1.e
 Integration File signal 2: autoint2.e
 Quant Time: Dec 14 02:22:14 2021
 Quant Method : Z:\pestpcbsrv\HPCHEM1\ECD_D\Method\PD113021.M
 Quant Title : GC Extractables
 QLast Update : Tue Nov 30 17:33:19 2021
 Response via : Initial Calibration
 Integrator: ChemStation

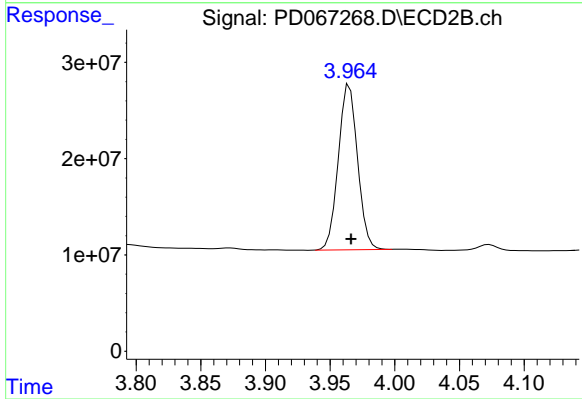
Volume Inj. : 2 µl
 Signal #1 Phase : ZB-MR2 Signal #2 Phase: ZB-MR1
 Signal #1 Info : 30M x 0.32mm x 0.2 Signal #2 Info : 30M x 0.32mm x 0.50µm



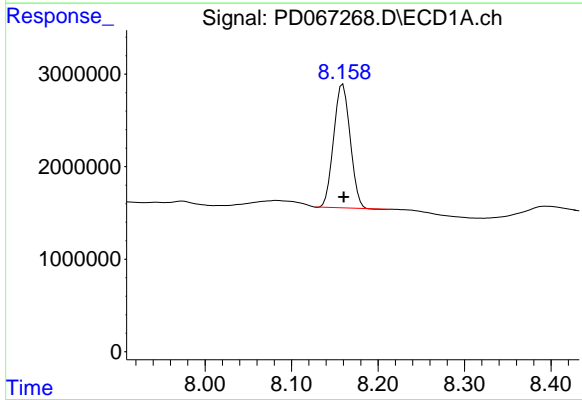


#1 Tetrachloro-m-xylene
 R.T.: 3.436 min
 Delta R.T.: 0.000 min
 Response: 37859282
 Conc: 18.32 ng/ml

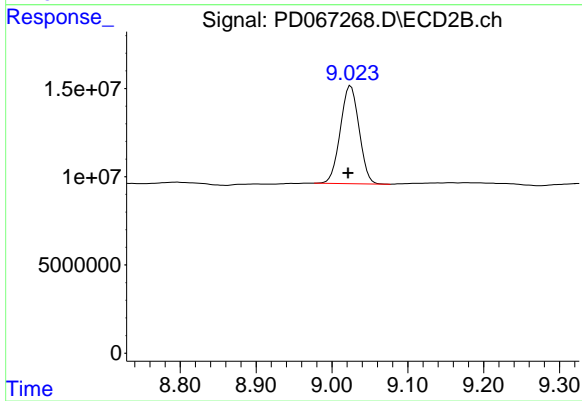
Instrument :
 ECD_D
 ClientSampleId :
 I.BLK



#1 Tetrachloro-m-xylene
 R.T.: 3.965 min
 Delta R.T.: -0.001 min
 Response: 177538731
 Conc: 24.46 ng/ml



#28 Decachlorobiphenyl
 R.T.: 8.160 min
 Delta R.T.: 0.000 min
 Response: 17564015
 Conc: 15.50 ng/ml



#28 Decachlorobiphenyl
 R.T.: 9.025 min
 Delta R.T.: 0.004 min
 Response: 95174189
 Conc: 18.93 ng/ml