

Data Path : Z:\pestpcbsrv\HPCHEM1\ECD_D\Data\PD121321\
 Data File : PD067277.D
 Signal(s) : Signal #1: ECD1A.ch Signal #2: ECD2B.ch
 Acq On : 13 Dec 2021 14:40
 Operator : AR\AJ
 Sample : M5017-19
 Misc :
 ALS Vial : 9 Sample Multiplier: 1

Instrument :
 ECD_D
 ClientSampleId :
 TP2

Integration File signal 1: autoint1.e
 Integration File signal 2: autoint2.e
 Quant Time: Dec 14 02:25:07 2021
 Quant Method : Z:\pestpcbsrv\HPCHEM1\ECD_D\Method\PD113021.M
 Quant Title : GC Extractables
 QLast Update : Tue Nov 30 17:33:19 2021
 Response via : Initial Calibration
 Integrator: ChemStation

Volume Inj. : 2 µl
 Signal #1 Phase : ZB-MR2 Signal #2 Phase: ZB-MR1
 Signal #1 Info : 30M x 0.32mm x0.2 Signal #2 Info : 30M x 0.32mm x 0.50µm

Compound	RT#1	RT#2	Resp#1	Resp#2	ng/ml	ng/ml
System Monitoring Compounds						
1) SA Tetrachlo...	3.436	3.964	36297575	172.3E6	17.566	23.739m#
28) SA Decachlor...	8.159	9.026	19449407	103.2E6	17.166	20.536
Target Compounds						
10) B gamma-Chl...	5.358	6.069	2141508	15313934	0.736	2.081m#
11) B alpha-Chl...	5.414	6.142	2887232	22726232	1.016	3.120m#
15) B Endosulfa...	6.251	6.899	12215477	28075332	5.453m	4.678m

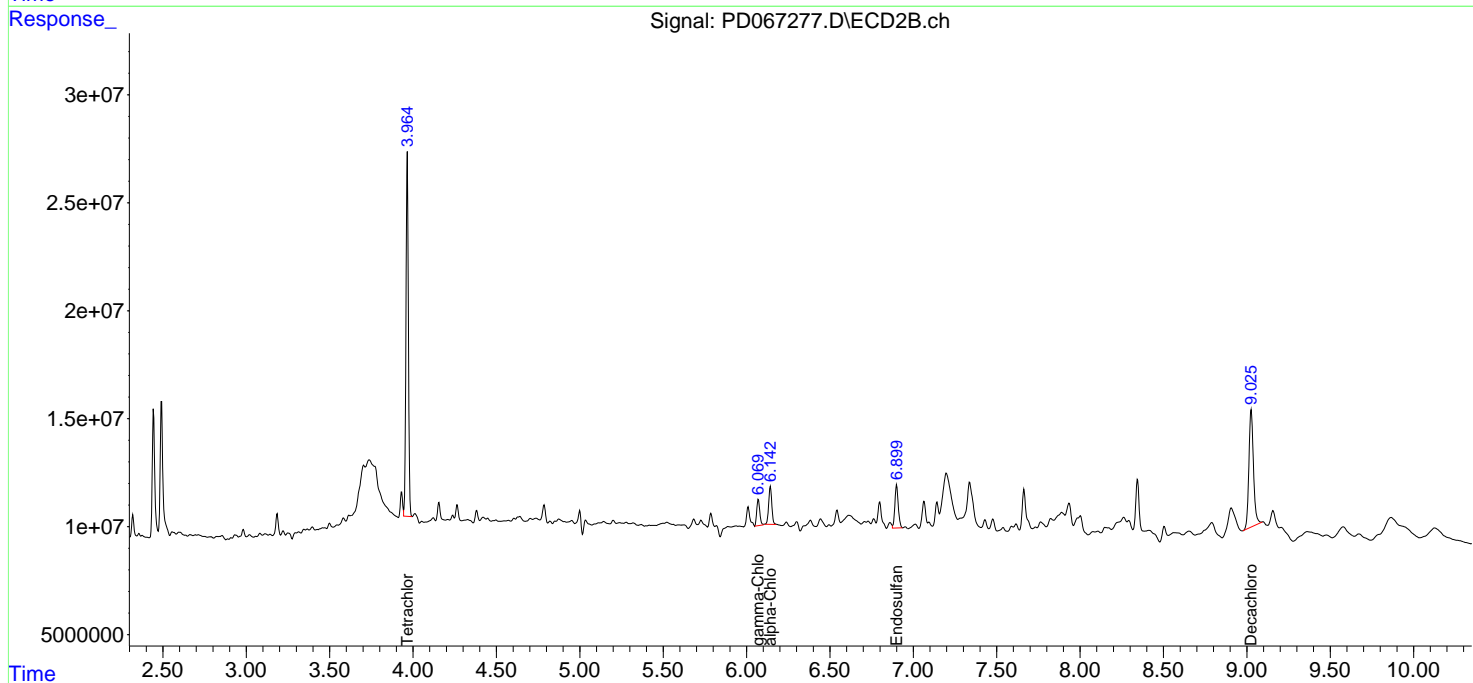
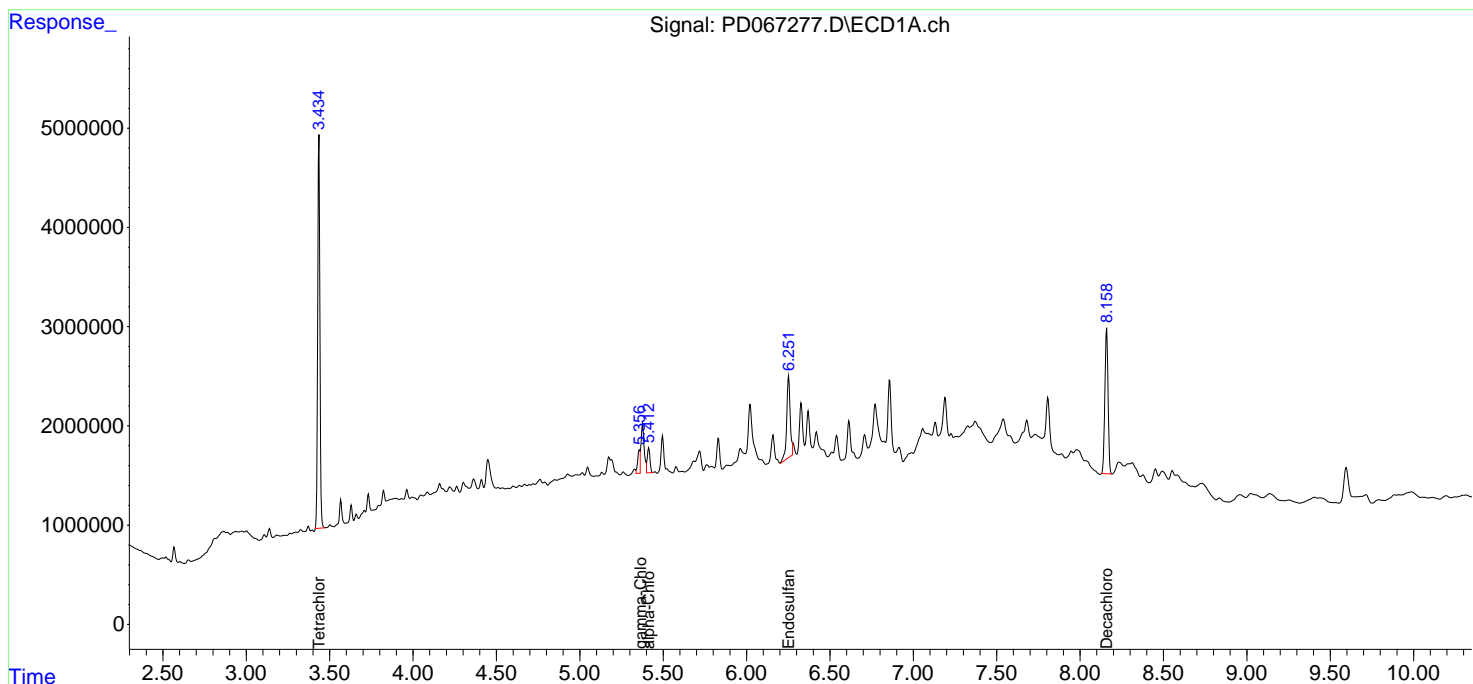
(f)=RT Delta > 1/2 Window (#)=Amounts differ by > 25% (m)=manual int.

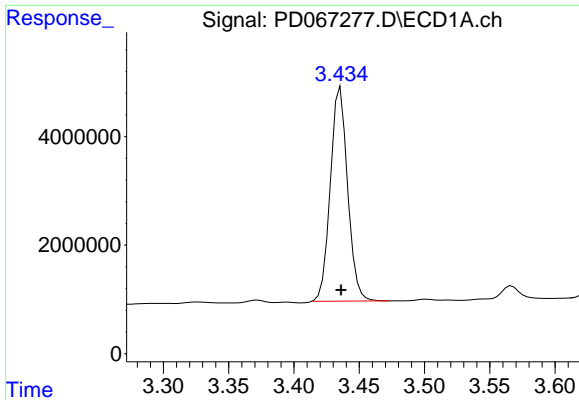
Data Path : Z:\pestpcbsrv\HPCHEM1\ECD_D\Data\PD121321\
 Data File : PD067277.D
 Signal(s) : Signal #1: ECD1A.ch Signal #2: ECD2B.ch
 Acq On : 13 Dec 2021 14:40
 Operator : AR\AJ
 Sample : M5017-19
 Misc :
 ALS Vial : 9 Sample Multiplier: 1

Instrument :
 ECD_D
 ClientSampleId :
 TP2

Integration File signal 1: autoint1.e
 Integration File signal 2: autoint2.e
 Quant Time: Dec 14 02:25:07 2021
 Quant Method : Z:\pestpcbsrv\HPCHEM1\ECD_D\Method\PD113021.M
 Quant Title : GC Extractables
 QLast Update : Tue Nov 30 17:33:19 2021
 Response via : Initial Calibration
 Integrator: ChemStation

Volume Inj. : 2 µl
 Signal #1 Phase : ZB-MR2 Signal #2 Phase: ZB-MR1
 Signal #1 Info : 30M x 0.32mm x0.2 Signal #2 Info : 30M x 0.32mm x 0.50µm

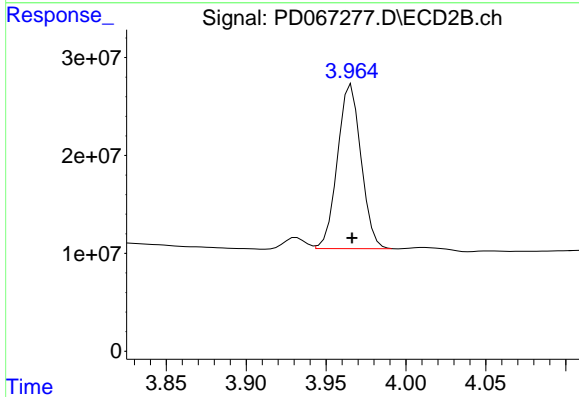




#1 Tetrachloro-m-xylene

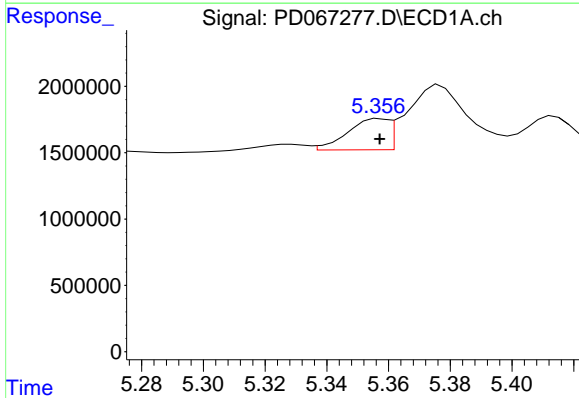
R.T.: 3.436 min
 Delta R.T.: 0.000 min
 Response: 36297575
 Conc: 17.57 ng/ml

Instrument :
 ECD_D
 ClientSampleId :
 TP2



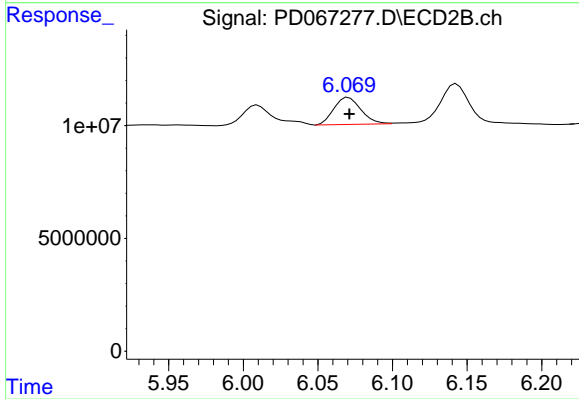
#1 Tetrachloro-m-xylene

R.T.: 3.964 min
 Delta R.T.: -0.002 min
 Response: 172306246
 Conc: 23.74 ng/ml m



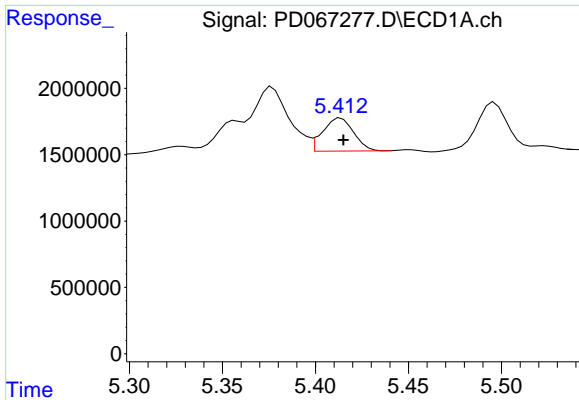
#10 gamma-Chlordane

R.T.: 5.358 min
 Delta R.T.: 0.000 min
 Response: 2141508
 Conc: 0.74 ng/ml



#10 gamma-Chlordane

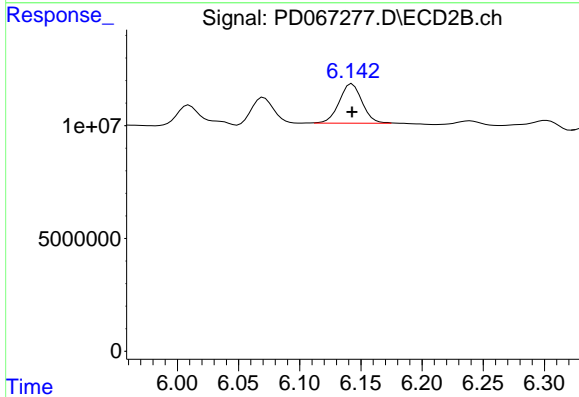
R.T.: 6.069 min
 Delta R.T.: -0.002 min
 Response: 15313934
 Conc: 2.08 ng/ml m



#11 alpha-Chlordane

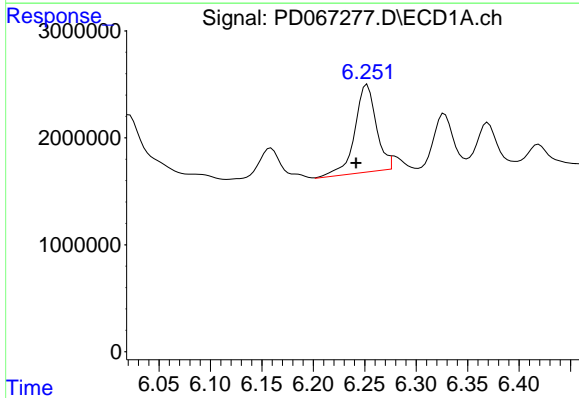
R.T.: 5.414 min
 Delta R.T.: -0.001 min
 Response: 2887232
 Conc: 1.02 ng/ml

Instrument :
 ECD_D
 ClientSampleId :
 TP2



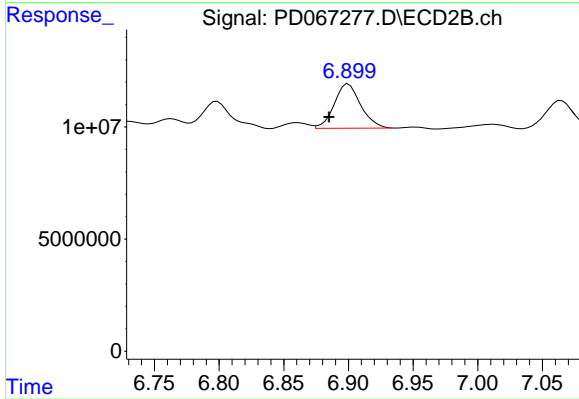
#11 alpha-Chlordane

R.T.: 6.142 min
 Delta R.T.: -0.001 min
 Response: 22726232
 Conc: 3.12 ng/ml m



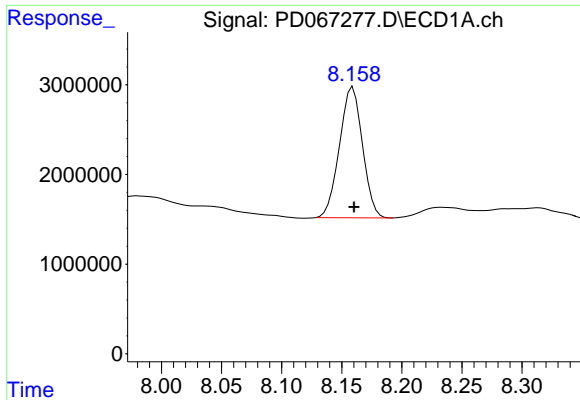
#15 Endosulfan II

R.T.: 6.251 min
 Delta R.T.: 0.010 min
 Response: 12215477
 Conc: 5.45 ng/ml m



#15 Endosulfan II

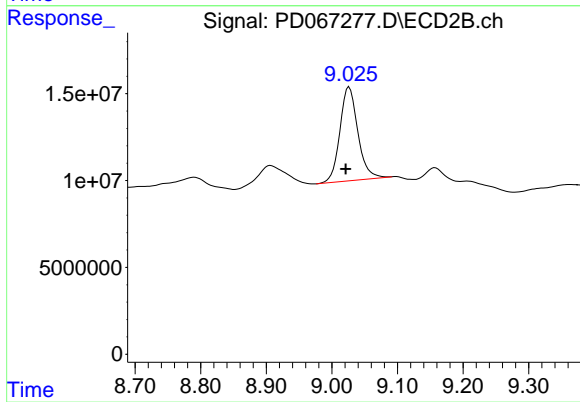
R.T.: 6.899 min
 Delta R.T.: 0.013 min
 Response: 28075332
 Conc: 4.68 ng/ml m



#28 Decachlorobiphenyl

R.T.: 8.159 min
Delta R.T.: 0.000 min
Response: 19449407
Conc: 17.17 ng/ml

Instrument :
ECD_D
ClientSampleId :
TP2



#28 Decachlorobiphenyl

R.T.: 9.026 min
Delta R.T.: 0.005 min
Response: 103238523
Conc: 20.54 ng/ml