

Data Path : Z:\pestpcbsrv\HPCHEM1\ECD_D\Data\PD121321\
 Data File : PD067280.D
 Signal(s) : Signal #1: ECD1A.ch Signal #2: ECD2B.ch
 Acq On : 13 Dec 2021 15:22
 Operator : AR\AJ
 Sample : M5017-39MS
 Misc :
 ALS Vial : 12 Sample Multiplier: 1

Instrument :
 ECD_D
 ClientSampleId :
 SP1AMS

Integration File signal 1: autoint1.e
 Integration File signal 2: autoint2.e
 Quant Time: Dec 14 02:26:06 2021
 Quant Method : Z:\pestpcbsrv\HPCHEM1\ECD_D\Method\PD113021.M
 Quant Title : GC Extractables
 QLast Update : Tue Nov 30 17:33:19 2021
 Response via : Initial Calibration
 Integrator: ChemStation

Volume Inj. : 2 µl
 Signal #1 Phase : ZB-MR2 Signal #2 Phase: ZB-MR1
 Signal #1 Info : 30M x 0.32mm x0.2 Signal #2 Info : 30M x 0.32mm x 0.50µm

Compound	RT#1	RT#2	Resp#1	Resp#2	ng/ml	ng/ml

System Monitoring Compounds						
1) SA Tetrachlo...	3.436	3.967	39491602	204.4E6	19.112	28.163 #
2) SA Decachlor...	8.157	9.025	22842947	98193598	20.161m	19.532m
Target Compounds						
2) A alpha-BHC	3.872	4.360	130.9E6	511.4E6	38.968	49.141 #
3) MA gamma-BHC...	4.153	4.645	123.1E6	438.6E6	38.318	46.026
4) MA Heptachlor	4.447	5.144	126.3E6	407.9E6	38.815	45.315
5) MB Aldrin	4.691	5.448	134.9E6	364.8E6	42.356	43.393
6) B beta-BHC	4.402	4.822	50701238	188.5E6	37.144	42.751
7) B delta-BHC	4.604	5.037	56055296	198.2E6	18.745	21.599
8) B Heptachlo...	5.132	5.837	117.5E6	298.4E6	40.791	42.560
9) A Endosulfan I	5.468	6.195	104.6E6	292.5E6	40.125	42.041
10) B gamma-Chl...	5.356	6.071	118.8E6	309.3E6	40.857	42.030
11) B alpha-Chl...	5.414	6.142	114.9E6	309.4E6	40.452	42.481
12) B 4,4'-DDE	5.578	6.303	109.4E6	301.0E6	40.767	43.507
13) MA Dieldrin	5.710	6.453	117.8E6	315.6E6	42.156	43.032
14) MA Endrin	5.967	6.672	103.8E6	271.3E6	45.453	48.311
15) B Endosulfa...	6.240	6.887	93047953	267.1E6	41.533	44.498
16) A 4,4'-DDD	6.092	6.798	83020603	239.6E6	39.504	40.967
17) MA 4,4'-DDT	6.331	7.096	86295197	233.4E6	40.785	39.105
18) B Endrin al...	6.409	7.012	71573666	208.8E6	42.799	44.524
19) B Endosulfa...	6.621	7.235	70554190	213.8E6	34.788	35.614
20) A Methoxychlor	6.878	7.559	42829231	127.0E6	38.612	39.430
21) B Endrin ke...	7.112	7.708	85177498	276.3E6	37.596	38.202
22) Mirex	7.292	8.156	64779907	214.5E6	40.383	43.801

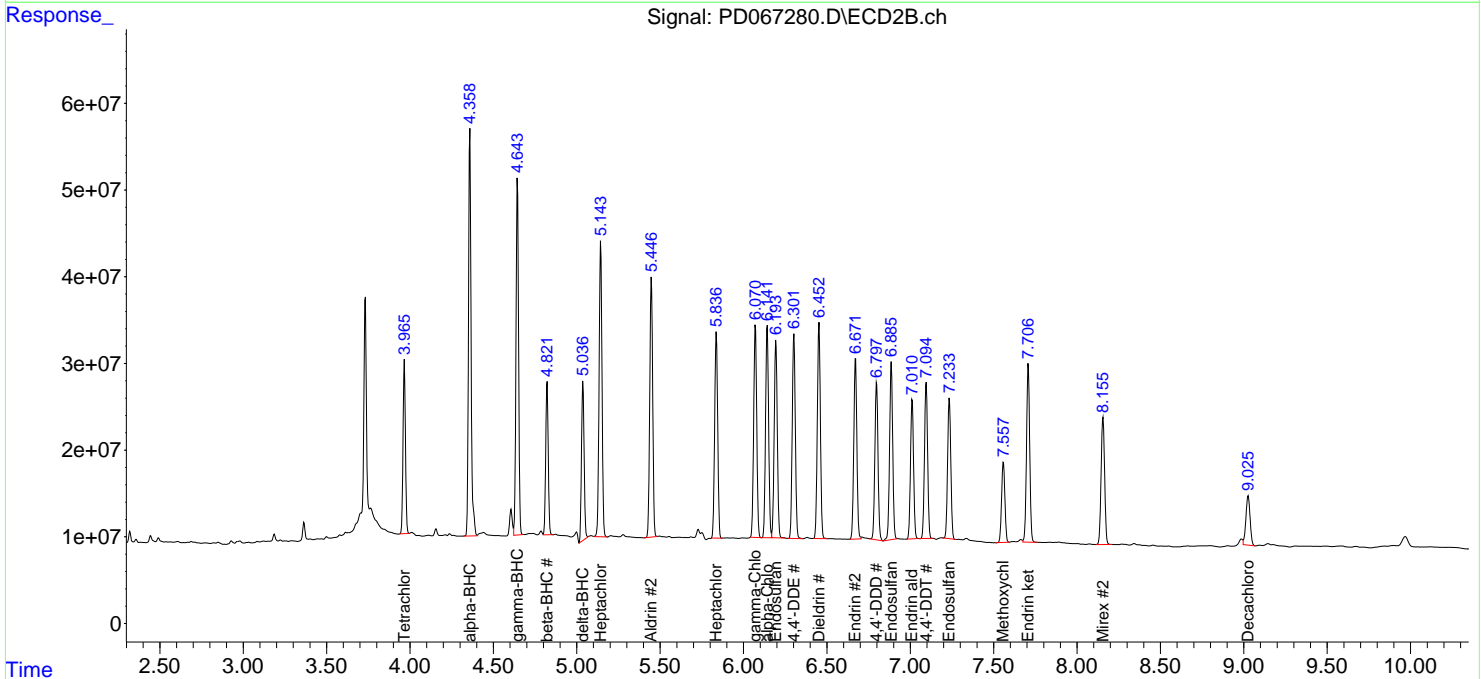
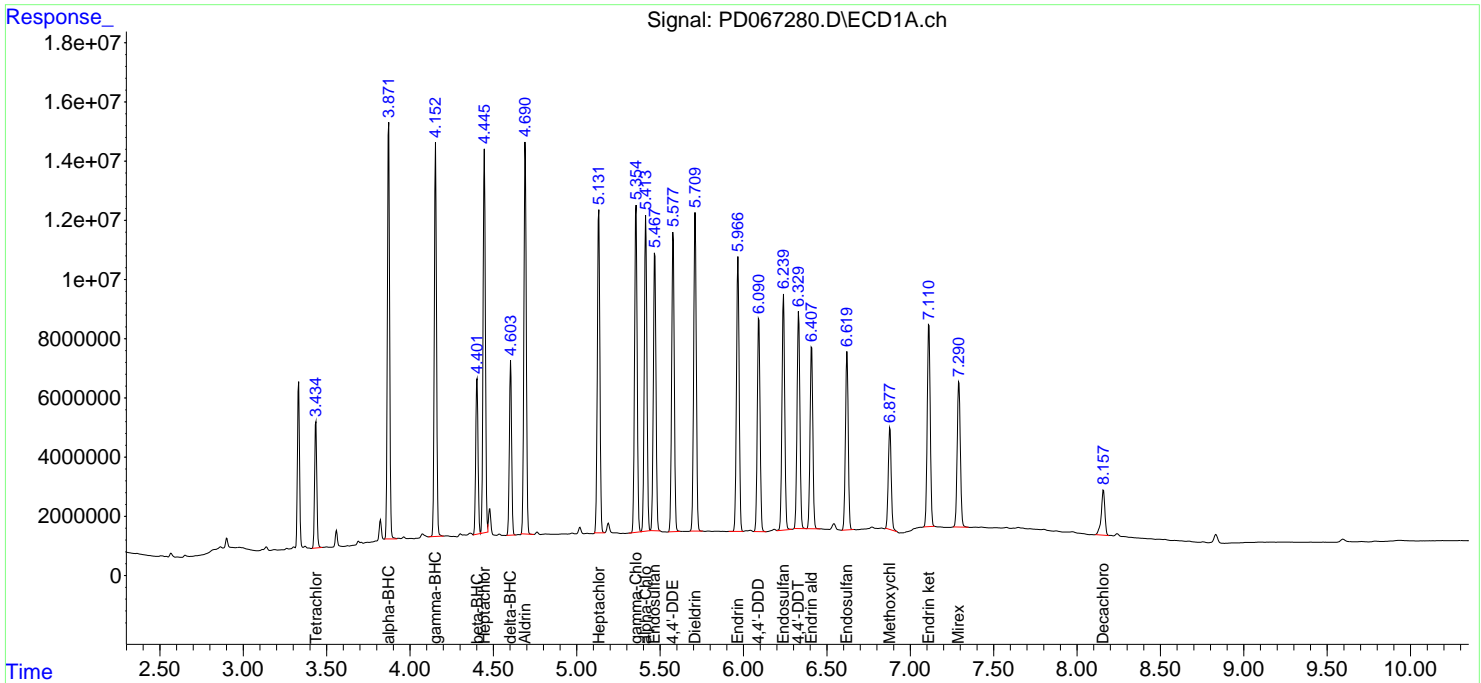
(f)=RT Delta > 1/2 Window (#)=Amounts differ by > 25% (m)=manual int.

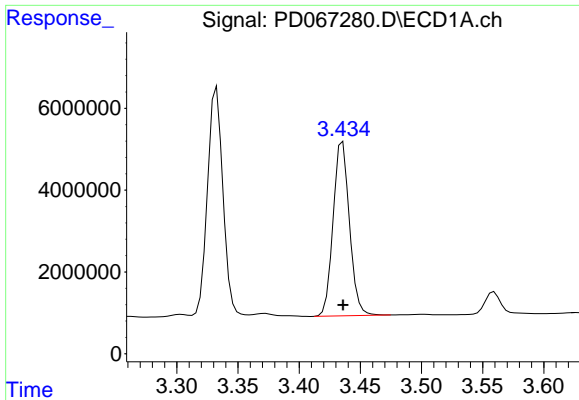
Data Path : Z:\pestpcbsrv\HPCHEM1\ECD_D\Data\PD121321\
 Data File : PD067280.D
 Signal(s) : Signal #1: ECD1A.ch Signal #2: ECD2B.ch
 Acq On : 13 Dec 2021 15:22
 Operator : AR\AJ
 Sample : M5017-39MS
 Misc :
 ALS Vial : 12 Sample Multiplier: 1

Instrument :
 ECD_D
 ClientSampleId :
 SP1AMS

Integration File signal 1: autoint1.e
 Integration File signal 2: autoint2.e
 Quant Time: Dec 14 02:26:06 2021
 Quant Method : Z:\pestpcbsrv\HPCHEM1\ECD_D\Method\PD113021.M
 Quant Title : GC Extractables
 QLast Update : Tue Nov 30 17:33:19 2021
 Response via : Initial Calibration
 Integrator: ChemStation

Volume Inj. : 2 µl
 Signal #1 Phase : ZB-MR2 Signal #2 Phase: ZB-MR1
 Signal #1 Info : 30M x 0.32mm x0.2 Signal #2 Info : 30M x 0.32mm x 0.50µm

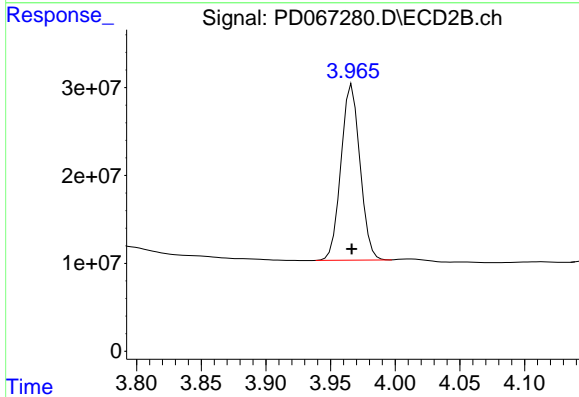




#1 Tetrachloro-m-xylene

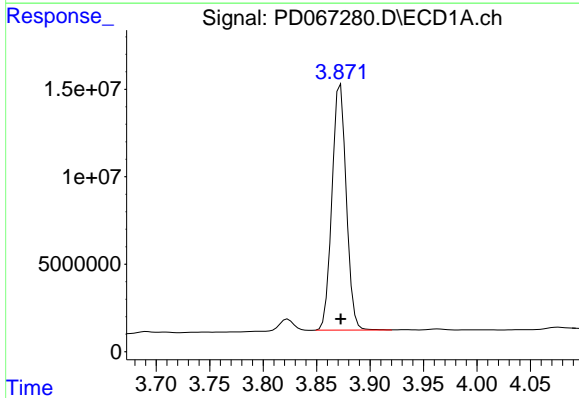
R.T.: 3.436 min
 Delta R.T.: 0.000 min
 Response: 39491602
 Conc: 19.11 ng/ml

Instrument :
 ECD_D
 ClientSampleId :
 SP1AMS



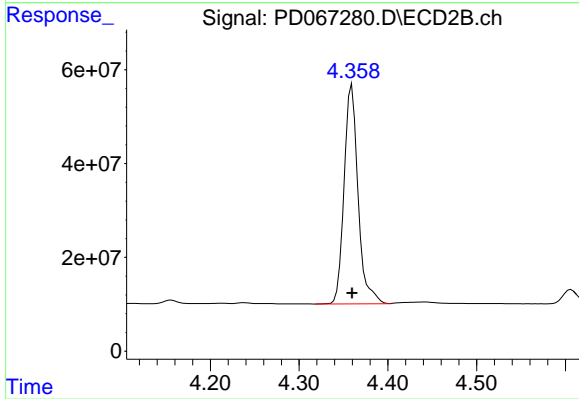
#1 Tetrachloro-m-xylene

R.T.: 3.967 min
 Delta R.T.: 0.000 min
 Response: 204410185
 Conc: 28.16 ng/ml



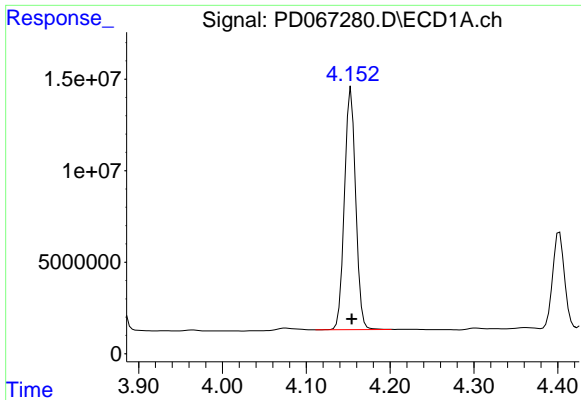
#2 alpha-BHC

R.T.: 3.872 min
 Delta R.T.: 0.000 min
 Response: 130894319
 Conc: 38.97 ng/ml



#2 alpha-BHC

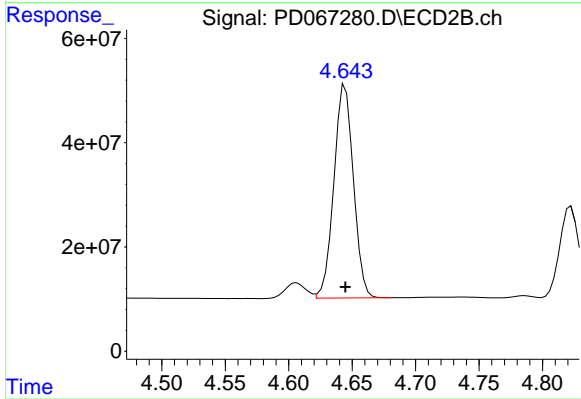
R.T.: 4.360 min
 Delta R.T.: 0.000 min
 Response: 511388556
 Conc: 49.14 ng/ml



#3 gamma-BHC (Lindane)

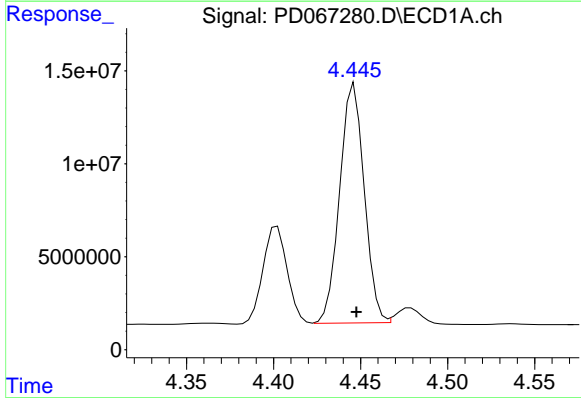
R.T.: 4.153 min
 Delta R.T.: 0.000 min
 Response: 123140030
 Conc: 38.32 ng/ml

Instrument :
 ECD_D
 ClientSampleId :
 SP1AMS



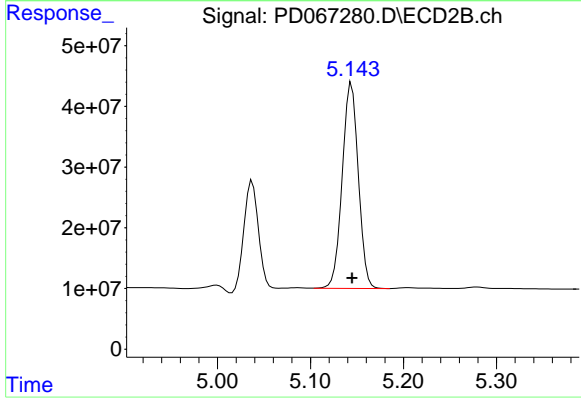
#3 gamma-BHC (Lindane)

R.T.: 4.645 min
 Delta R.T.: 0.000 min
 Response: 438610810
 Conc: 46.03 ng/ml



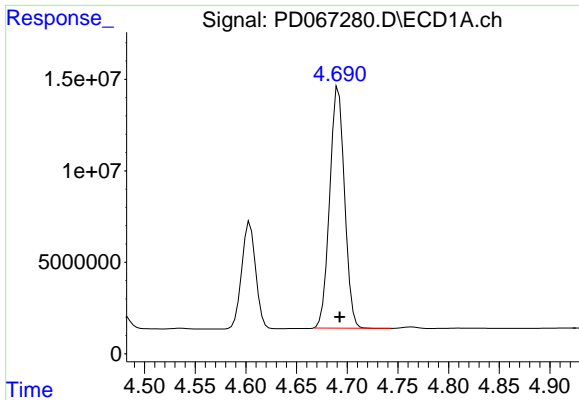
#4 Heptachlor

R.T.: 4.447 min
 Delta R.T.: -0.001 min
 Response: 126281367
 Conc: 38.81 ng/ml



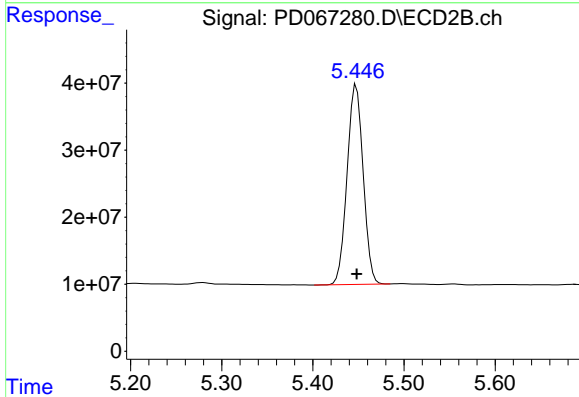
#4 Heptachlor

R.T.: 5.144 min
 Delta R.T.: 0.000 min
 Response: 407873678
 Conc: 45.31 ng/ml

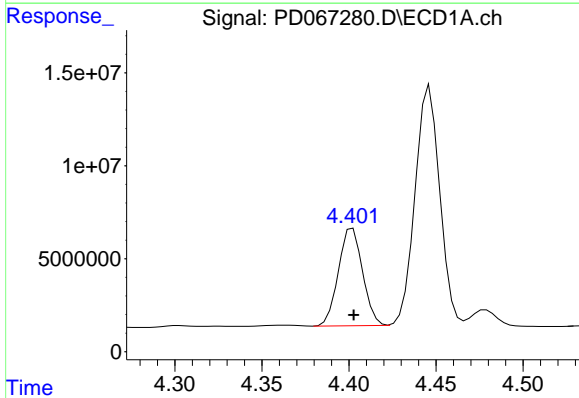


#5 Aldrin
 R.T.: 4.691 min
 Delta R.T.: -0.001 min
 Response: 134877728
 Conc: 42.36 ng/ml

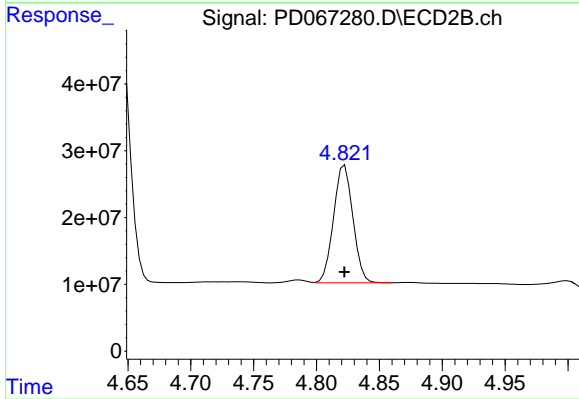
Instrument :
 ECD_D
 ClientSampleId :
 SP1AMS



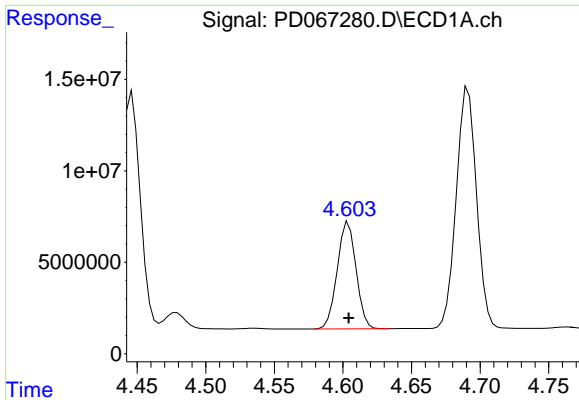
#5 Aldrin
 R.T.: 5.448 min
 Delta R.T.: 0.000 min
 Response: 364761400
 Conc: 43.39 ng/ml



#6 beta-BHC
 R.T.: 4.402 min
 Delta R.T.: 0.000 min
 Response: 50701238
 Conc: 37.14 ng/ml



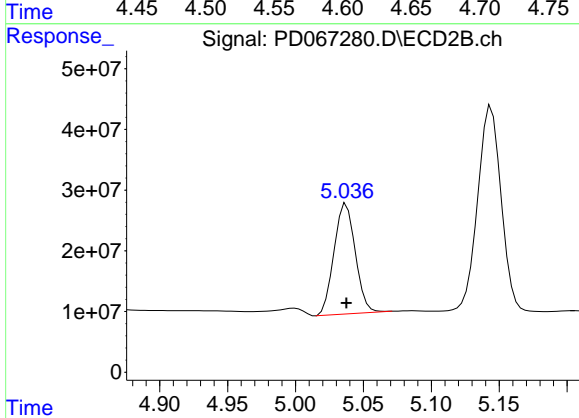
#6 beta-BHC
 R.T.: 4.822 min
 Delta R.T.: 0.000 min
 Response: 188457015
 Conc: 42.75 ng/ml



#7 delta-BHC

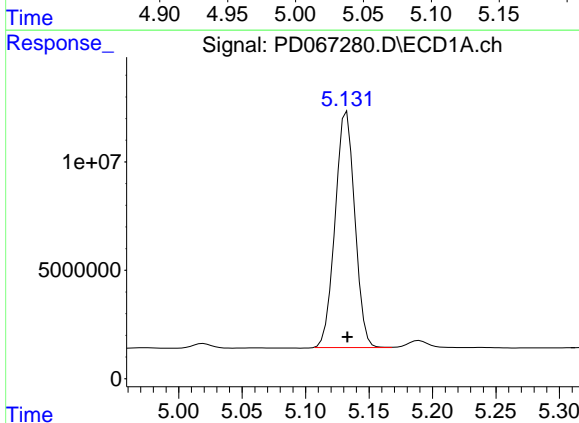
R.T.: 4.604 min
 Delta R.T.: 0.000 min
 Response: 56055296
 Conc: 18.74 ng/ml

Instrument :
 ECD_D
 ClientSampleId :
 SP1AMS



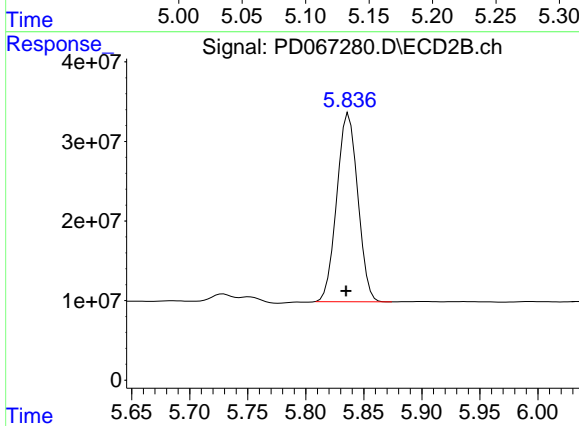
#7 delta-BHC

R.T.: 5.037 min
 Delta R.T.: 0.000 min
 Response: 198222082
 Conc: 21.60 ng/ml



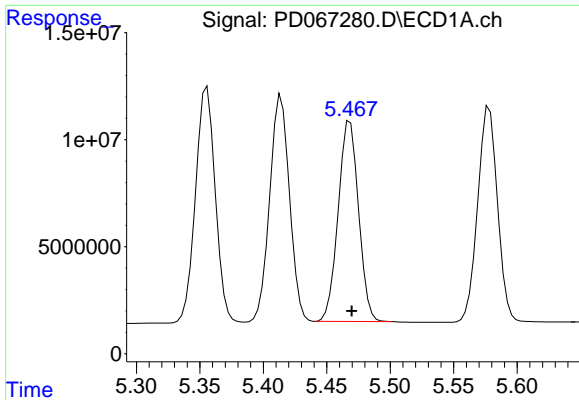
#8 Heptachlor epoxide

R.T.: 5.132 min
 Delta R.T.: 0.000 min
 Response: 117502334
 Conc: 40.79 ng/ml



#8 Heptachlor epoxide

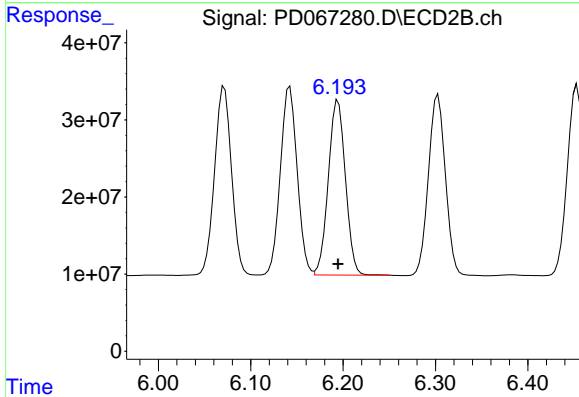
R.T.: 5.837 min
 Delta R.T.: 0.002 min
 Response: 298413436
 Conc: 42.56 ng/ml



#9 Endosulfan I

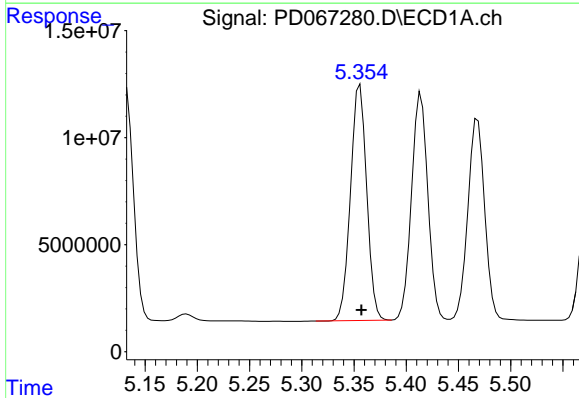
R.T.: 5.468 min
 Delta R.T.: -0.001 min
 Response: 104629040
 Conc: 40.13 ng/ml

Instrument :
 ECD_D
 ClientSampleId :
 SP1AMS



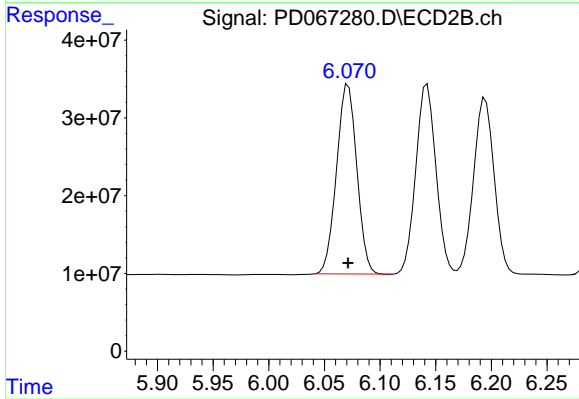
#9 Endosulfan I

R.T.: 6.195 min
 Delta R.T.: 0.000 min
 Response: 292494724
 Conc: 42.04 ng/ml



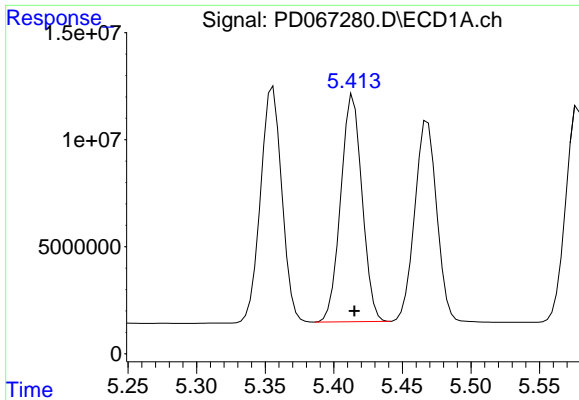
#10 gamma-Chlordane

R.T.: 5.356 min
 Delta R.T.: -0.001 min
 Response: 118823287
 Conc: 40.86 ng/ml



#10 gamma-Chlordane

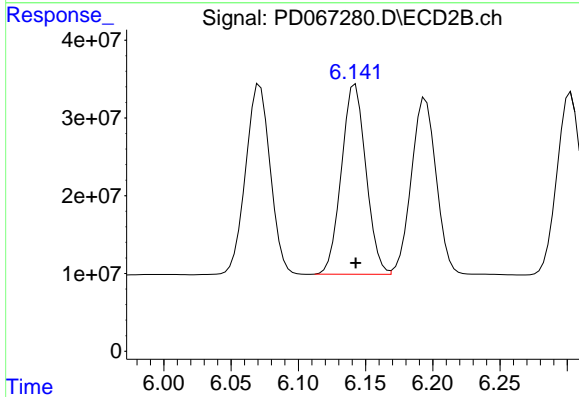
R.T.: 6.071 min
 Delta R.T.: 0.000 min
 Response: 309343519
 Conc: 42.03 ng/ml



#11 alpha-Chlordane

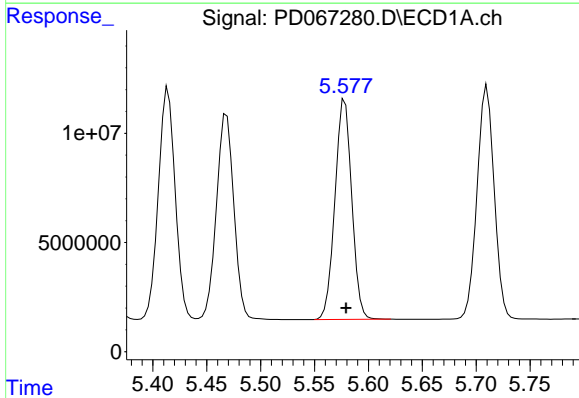
R.T.: 5.414 min
 Delta R.T.: 0.000 min
 Response: 114920339
 Conc: 40.45 ng/ml

Instrument :
 ECD_D
 ClientSampleId :
 SP1AMS



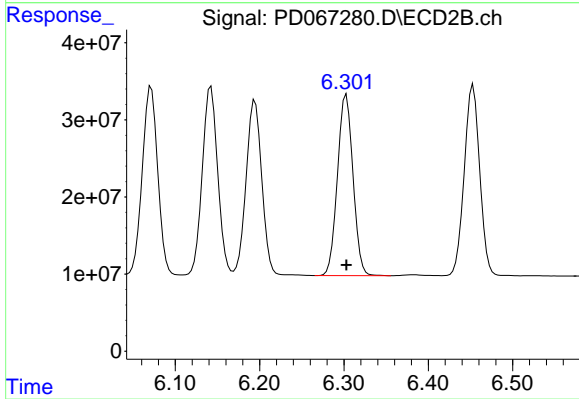
#11 alpha-Chlordane

R.T.: 6.142 min
 Delta R.T.: 0.000 min
 Response: 309427241
 Conc: 42.48 ng/ml



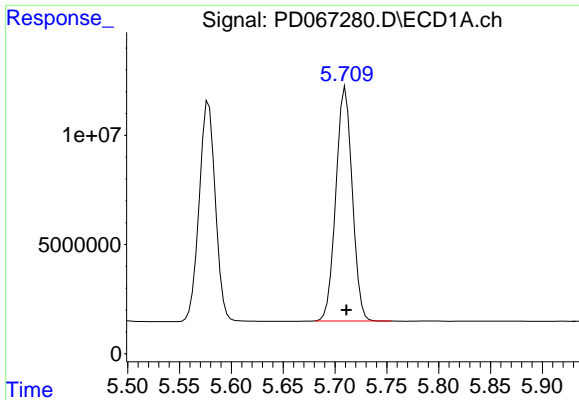
#12 4,4'-DDE

R.T.: 5.578 min
 Delta R.T.: -0.001 min
 Response: 109401124
 Conc: 40.77 ng/ml



#12 4,4'-DDE

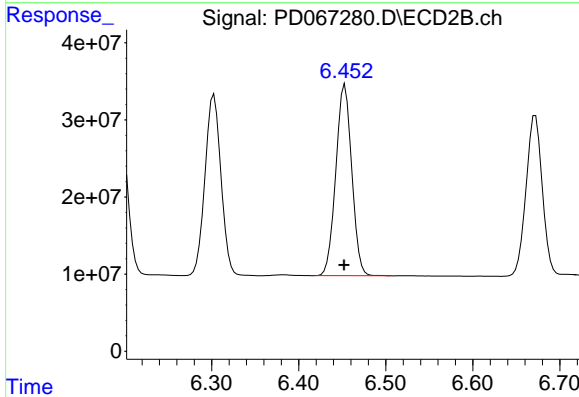
R.T.: 6.303 min
 Delta R.T.: 0.000 min
 Response: 301048009
 Conc: 43.51 ng/ml



#13 Dieldrin

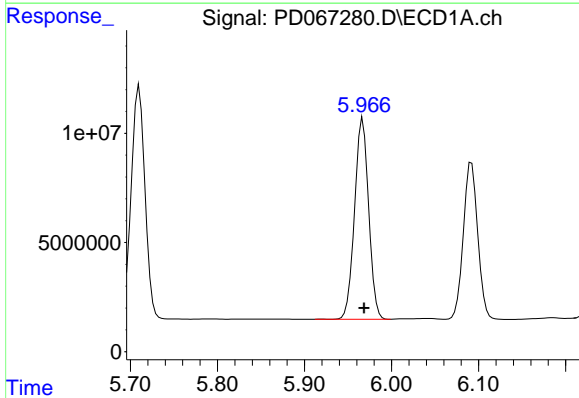
R.T.: 5.710 min
 Delta R.T.: 0.000 min
 Response: 117836825
 Conc: 42.16 ng/ml

Instrument :
 ECD_D
 ClientSampleId :
 SP1AMS



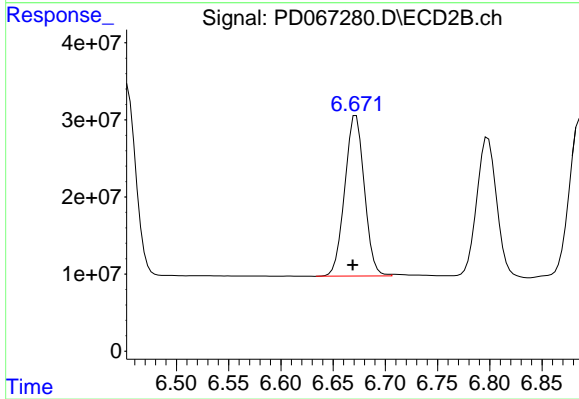
#13 Dieldrin

R.T.: 6.453 min
 Delta R.T.: 0.001 min
 Response: 31579876
 Conc: 43.03 ng/ml



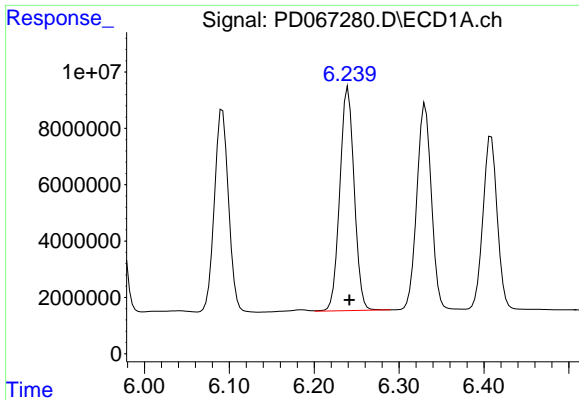
#14 Endrin

R.T.: 5.967 min
 Delta R.T.: -0.001 min
 Response: 103780562
 Conc: 45.45 ng/ml



#14 Endrin

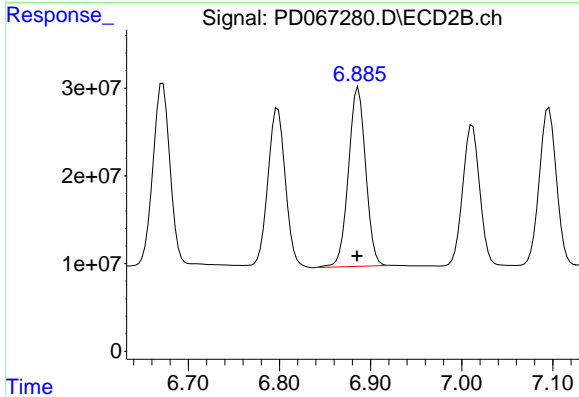
R.T.: 6.672 min
 Delta R.T.: 0.003 min
 Response: 271254026
 Conc: 48.31 ng/ml



#15 Endosulfan II

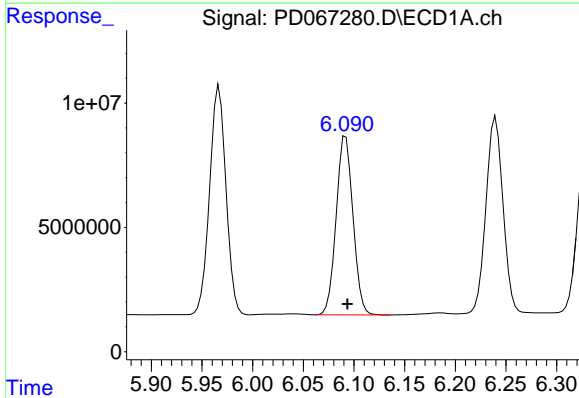
R.T.: 6.240 min
 Delta R.T.: -0.001 min
 Response: 93047953
 Conc: 41.53 ng/ml

Instrument :
 ECD_D
 ClientSampleId :
 SP1AMS



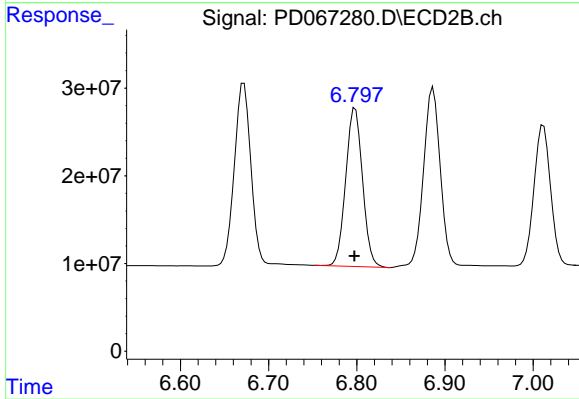
#15 Endosulfan II

R.T.: 6.887 min
 Delta R.T.: 0.001 min
 Response: 267077010
 Conc: 44.50 ng/ml



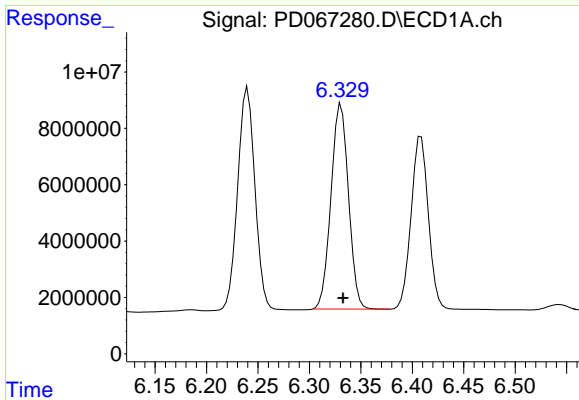
#16 4,4'-DDD

R.T.: 6.092 min
 Delta R.T.: -0.002 min
 Response: 83020603
 Conc: 39.50 ng/ml



#16 4,4'-DDD

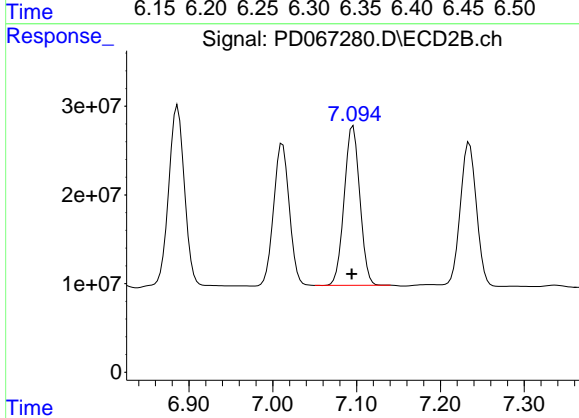
R.T.: 6.798 min
 Delta R.T.: 0.000 min
 Response: 239581799
 Conc: 40.97 ng/ml



#17 4,4'-DDT

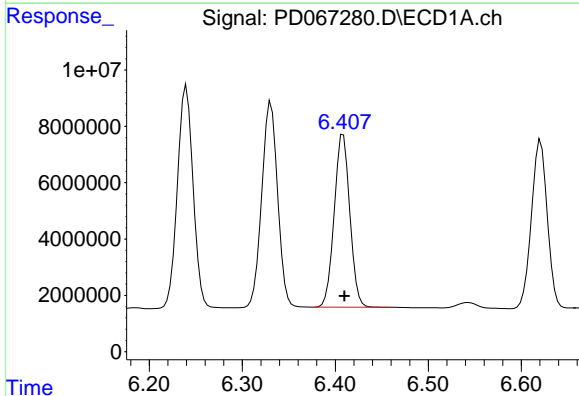
R.T.: 6.331 min
 Delta R.T.: -0.002 min
 Response: 86295197
 Conc: 40.78 ng/ml

Instrument :
 ECD_D
 ClientSampleId :
 SP1AMS



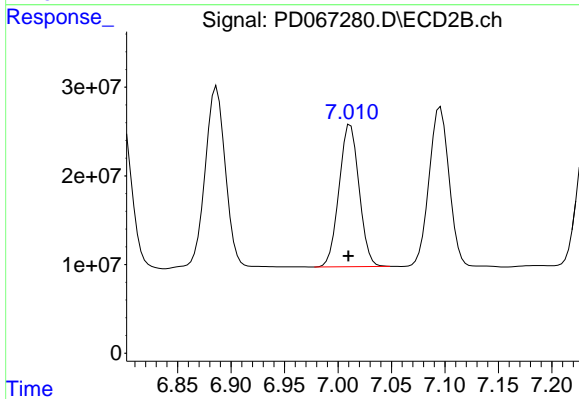
#17 4,4'-DDT

R.T.: 7.096 min
 Delta R.T.: 0.002 min
 Response: 233394530
 Conc: 39.11 ng/ml



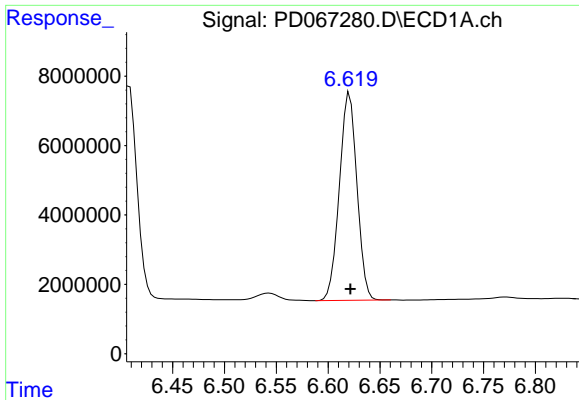
#18 Endrin aldehyde

R.T.: 6.409 min
 Delta R.T.: -0.001 min
 Response: 71573666
 Conc: 42.80 ng/ml



#18 Endrin aldehyde

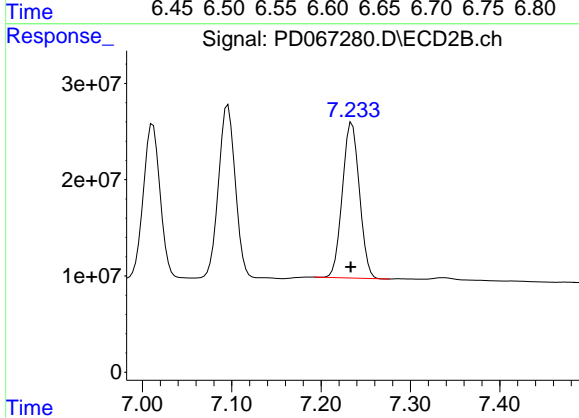
R.T.: 7.012 min
 Delta R.T.: 0.002 min
 Response: 208802660
 Conc: 44.52 ng/ml



#19 Endosulfan Sulfate

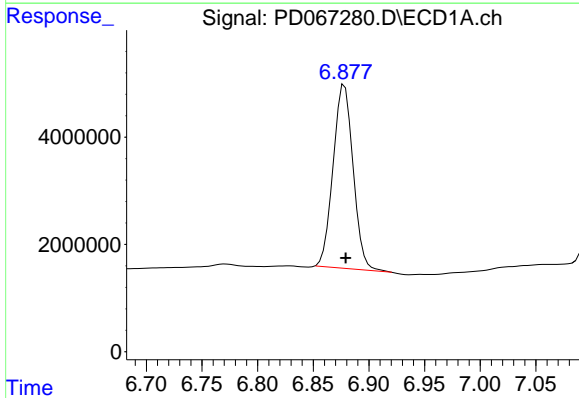
R.T.: 6.621 min
 Delta R.T.: 0.000 min
 Response: 70554190
 Conc: 34.79 ng/ml

Instrument :
 ECD_D
 ClientSampleId :
 SP1AMS



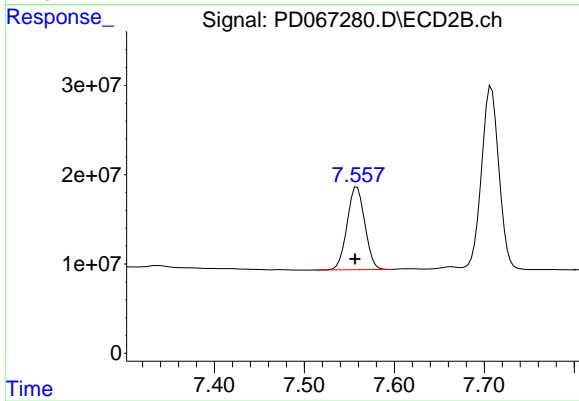
#19 Endosulfan Sulfate

R.T.: 7.235 min
 Delta R.T.: 0.001 min
 Response: 213823624
 Conc: 35.61 ng/ml



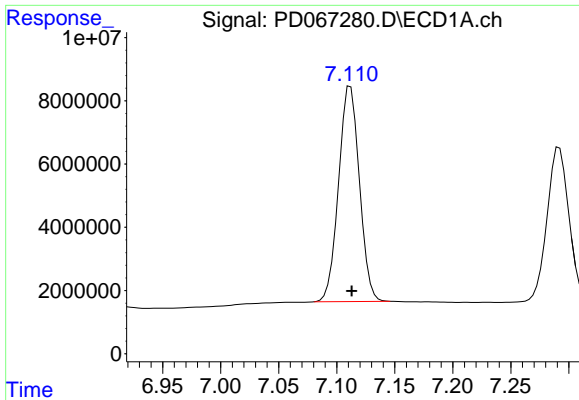
#20 Methoxychlor

R.T.: 6.878 min
 Delta R.T.: -0.001 min
 Response: 42829231
 Conc: 38.61 ng/ml



#20 Methoxychlor

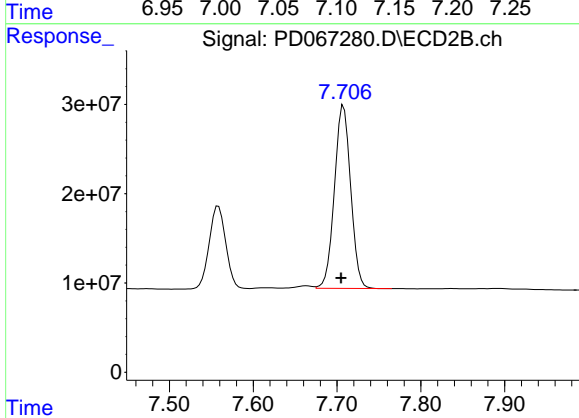
R.T.: 7.559 min
 Delta R.T.: 0.002 min
 Response: 127000297
 Conc: 39.43 ng/ml



#21 Endrin ketone

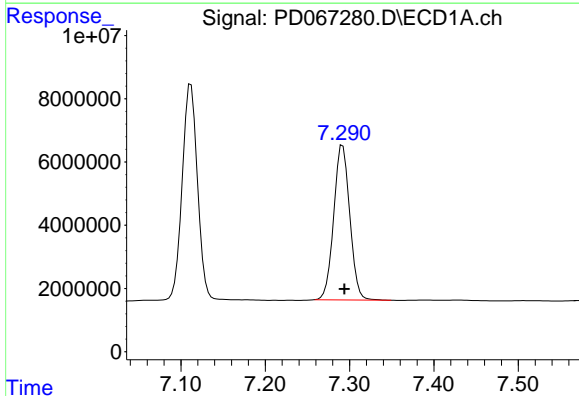
R.T.: 7.112 min
Delta R.T.: 0.000 min
Response: 85177498
Conc: 37.60 ng/ml

Instrument :
ECD_D
ClientSampleId :
SP1AMS



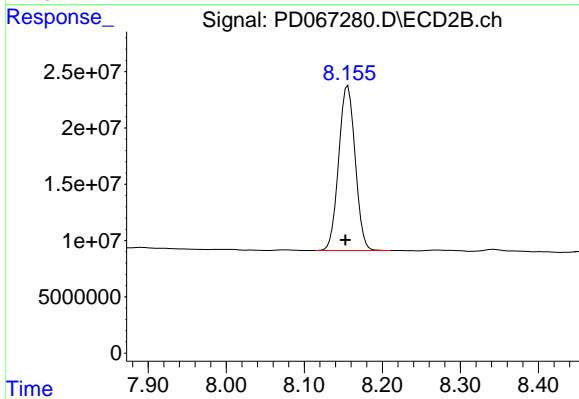
#21 Endrin ketone

R.T.: 7.708 min
Delta R.T.: 0.003 min
Response: 276278988
Conc: 38.20 ng/ml



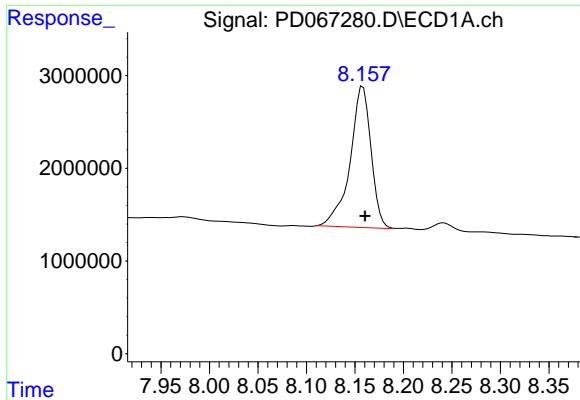
#22 Mirex

R.T.: 7.292 min
Delta R.T.: -0.002 min
Response: 64779907
Conc: 40.38 ng/ml



#22 Mirex

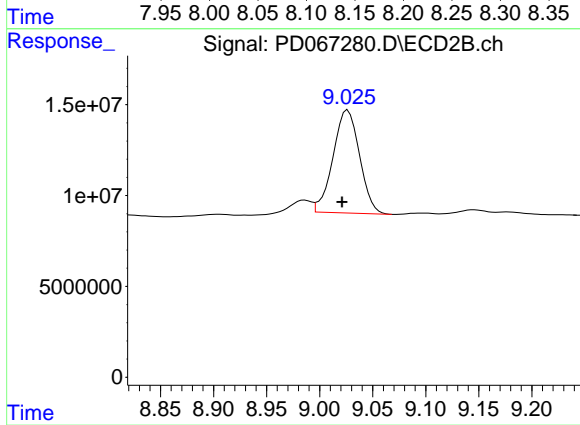
R.T.: 8.156 min
Delta R.T.: 0.003 min
Response: 214535440
Conc: 43.80 ng/ml



#28 Decachlorobiphenyl

R.T.: 8.157 min
Delta R.T.: -0.003 min
Response: 22842947
Conc: 20.16 ng/ml

Instrument :
ECD_D
ClientSampleId :
SP1AMS



#28 Decachlorobiphenyl

R.T.: 9.025 min
Delta R.T.: 0.004 min
Response: 98193598
Conc: 19.53 ng/ml m