

Data Path : Z:\pestpcbsrv\HPCHEM1\ECD\_D\Data\PD121421\  
 Data File : PD067309.D  
 Signal(s) : Signal #1: ECD1A.ch Signal #2: ECD2B.ch  
 Acq On : 14 Dec 2021 15:48  
 Operator : AR\AJ  
 Sample : PSTDICC075  
 Misc :  
 ALS Vial : 6 Sample Multiplier: 1

Instrument :  
 ECD\_D  
 ClientSampleId :  
 PSTDICC075

Integration File signal 1: autoint1.e  
 Integration File signal 2: autoint2.e  
 Quant Time: Dec 14 17:27:08 2021  
 Quant Method : Z:\pestpcbsrv\HPCHEM1\ECD\_D\Method\PD121421.M  
 Quant Title : GC Extractables  
 QLast Update : Tue Dec 14 17:25:57 2021  
 Response via : Initial Calibration  
 Integrator: ChemStation

Volume Inj. : 2 µl  
 Signal #1 Phase : ZB-MR2 Signal #2 Phase: ZB-MR1  
 Signal #1 Info : 30M x 0.32mm x0.2 Signal #2 Info : 30M x 0.32mm x 0.50µm

Compound	RT#1	RT#2	Resp#1	Resp#2	ng/ml	ng/ml
-----						
System Monitoring Compounds						
1) SA Tetrachlo...	3.435	3.964	131.6E6	608.3E6	71.889	70.916
28) SA Decachlor...	8.156	9.020	62374462	299.3E6	68.973	68.824
Target Compounds						
2) A alpha-BHC	3.871	4.358	225.6E6	853.6E6	73.174	71.504
3) MA gamma-BHC...	4.152	4.642	205.4E6	735.4E6	72.154	70.409
4) MA Heptachlor	4.445	5.142	212.1E6	631.6E6	72.381	70.256
5) MB Aldrin	4.690	5.445	205.9E6	566.0E6	72.191	70.396
6) B beta-BHC	4.401	4.821	84012620	314.4E6	70.246	69.368
7) B delta-BHC	4.603	5.035	199.3E6	638.3E6	72.748	70.789
8) B Heptachlo...	5.130	5.834	183.1E6	449.9E6	71.693	71.190
9) A Endosulfan I	5.466	6.191	166.3E6	466.1E6	71.908	69.795
10) B gamma-Chl...	5.353	6.068	186.1E6	494.6E6	72.293	70.083
11) B alpha-Chl...	5.412	6.139	180.0E6	486.4E6	71.962	69.918
12) B 4,4'-DDE	5.576	6.300	167.8E6	465.8E6	72.489	70.514
13) MA Dieldrin	5.707	6.449	180.3E6	480.4E6	72.452	70.240
14) MA Endrin	5.965	6.669	157.4E6	413.3E6	71.944	70.160
15) B Endosulfa...	6.237	6.883	136.3E6	381.5E6	71.297	69.779
16) A 4,4'-DDD	6.090	6.795	131.5E6	371.1E6	72.556	70.190
17) MA 4,4'-DDT	6.328	7.092	136.6E6	379.7E6	72.263	70.759
18) B Endrin al...	6.406	7.008	101.7E6	294.5E6	71.460	70.239
19) B Endosulfa...	6.618	7.231	122.7E6	367.7E6	70.990	69.719
20) A Methoxychlor	6.876	7.554	66326926	198.2E6	69.394	69.163
21) B Endrin ke...	7.109	7.704	131.5E6	409.4E6	70.653	69.916
22) Mirex	7.289	8.151	91813509	295.6E6	69.455	68.787
-----						

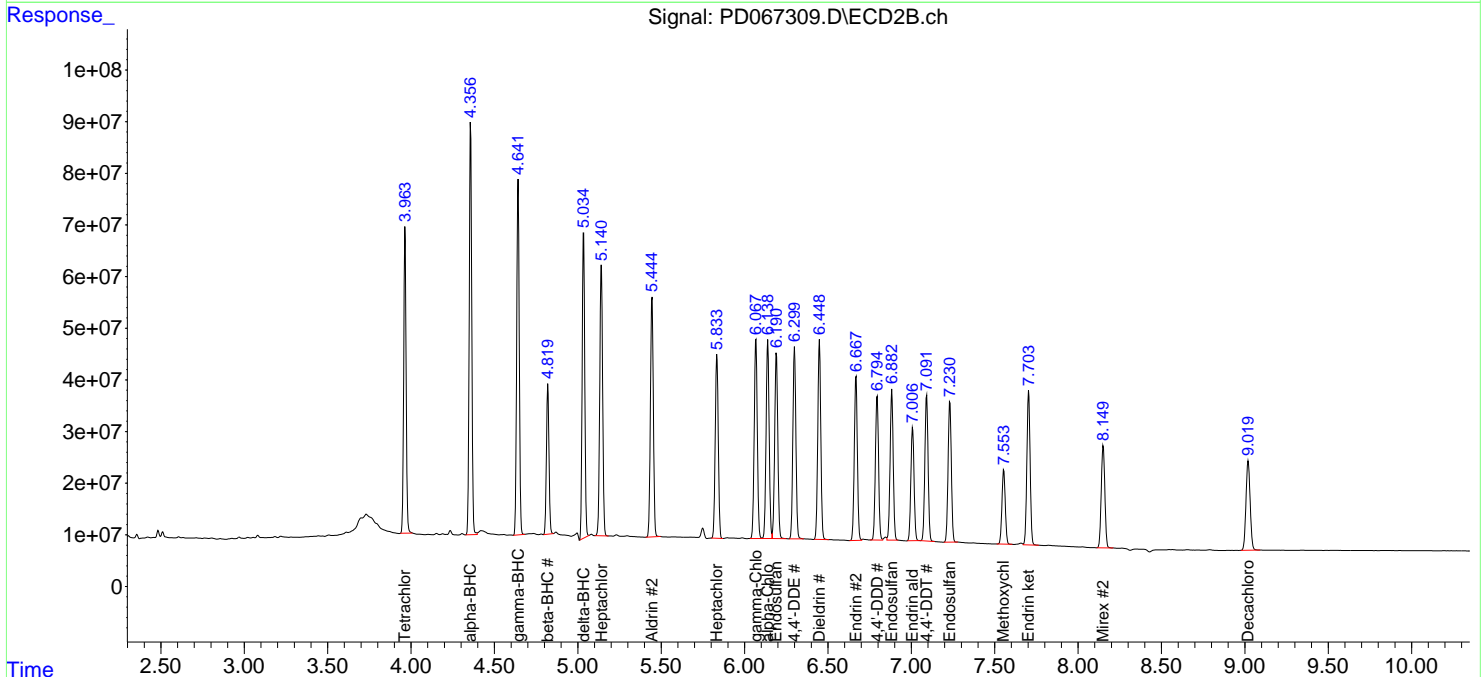
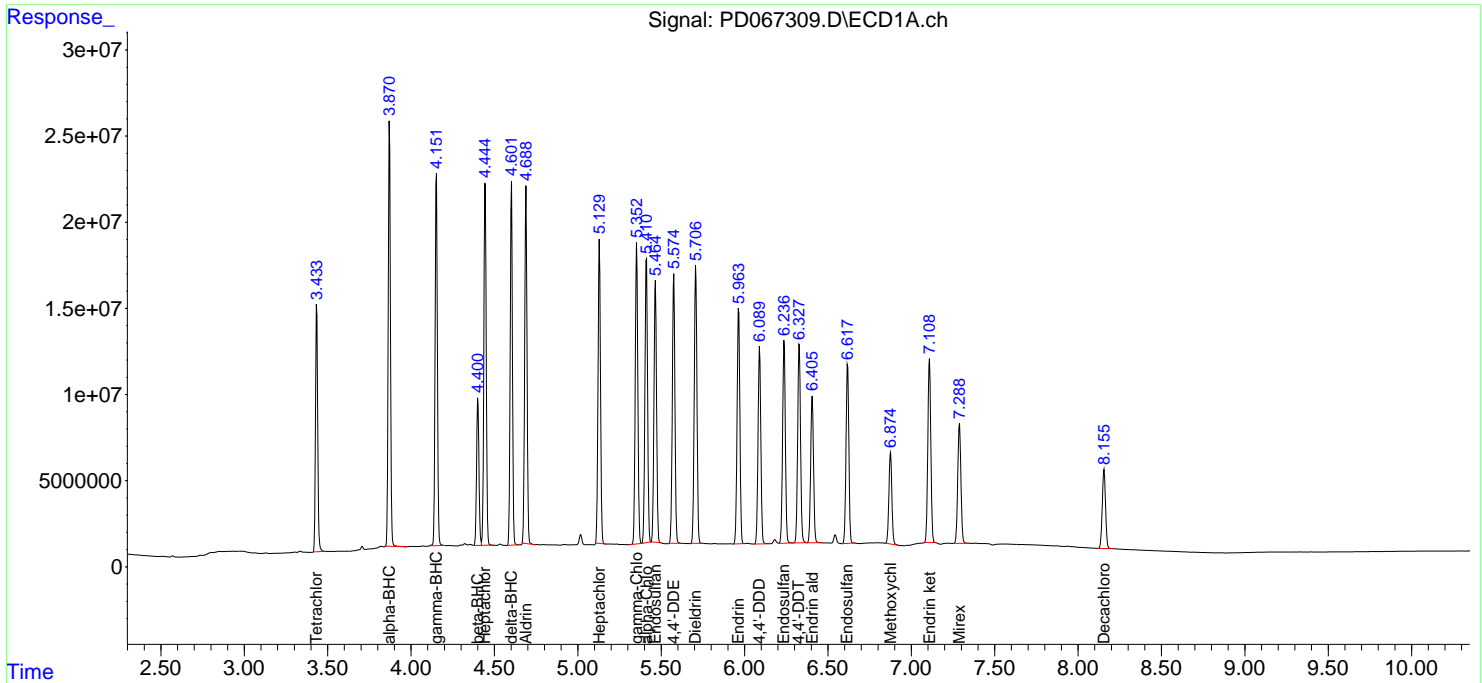
(f)=RT Delta > 1/2 Window (#)=Amounts differ by > 25% (m)=manual int.

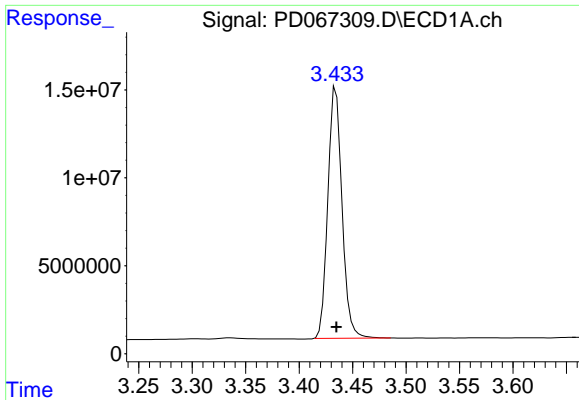
Data Path : Z:\pestpcbsrv\HPCHEM1\ECD\_D\Data\PD121421\  
 Data File : PD067309.D  
 Signal(s) : Signal #1: ECD1A.ch Signal #2: ECD2B.ch  
 Acq On : 14 Dec 2021 15:48  
 Operator : AR\AJ  
 Sample : PSTDICC075  
 Misc :  
 ALS Vial : 6 Sample Multiplier: 1

**Instrument :**  
 ECD\_D  
**ClientSampleId :**  
 PSTDICC075

Integration File signal 1: autoint1.e  
 Integration File signal 2: autoint2.e  
 Quant Time: Dec 14 17:27:08 2021  
 Quant Method : Z:\pestpcbsrv\HPCHEM1\ECD\_D\Method\PD121421.M  
 Quant Title : GC Extractables  
 QLast Update : Tue Dec 14 17:25:57 2021  
 Response via : Initial Calibration  
 Integrator: ChemStation

Volume Inj. : 2 µl  
 Signal #1 Phase : ZB-MR2 Signal #2 Phase: ZB-MR1  
 Signal #1 Info : 30M x 0.32mm x0.2 Signal #2 Info : 30M x 0.32mm x 0.50µm

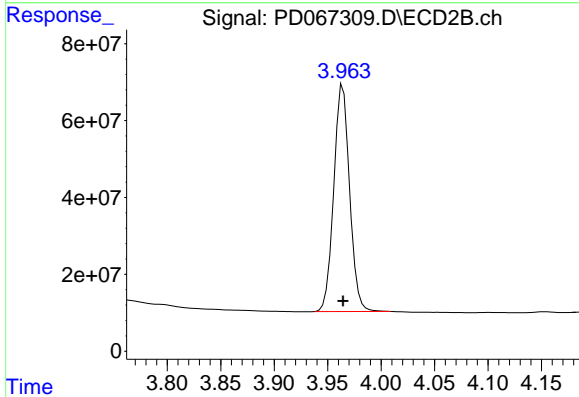




#1 Tetrachloro-m-xylene

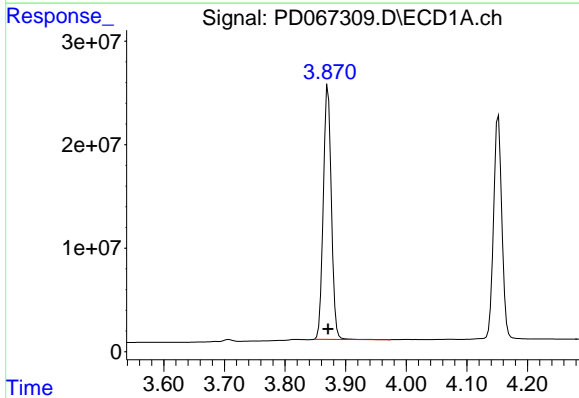
R.T.: 3.435 min  
 Delta R.T.: 0.000 min  
 Response: 131627923  
 Conc: 71.89 ng/ml

Instrument :  
 ECD\_D  
 ClientSampleId :  
 PSTDICC075



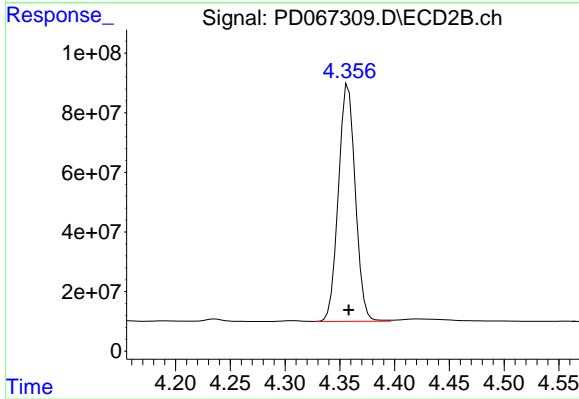
#1 Tetrachloro-m-xylene

R.T.: 3.964 min  
 Delta R.T.: 0.000 min  
 Response: 608277320  
 Conc: 70.92 ng/ml



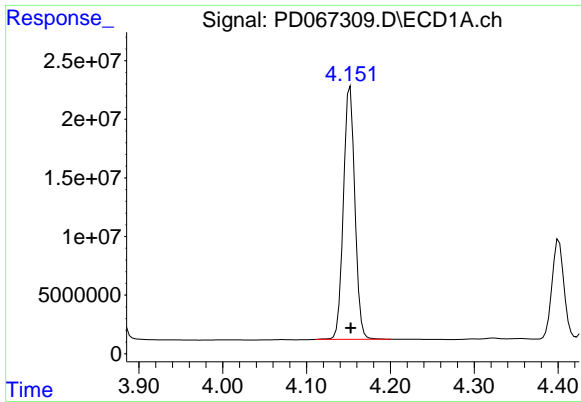
#2 alpha-BHC

R.T.: 3.871 min  
 Delta R.T.: 0.000 min  
 Response: 225648454  
 Conc: 73.17 ng/ml



#2 alpha-BHC

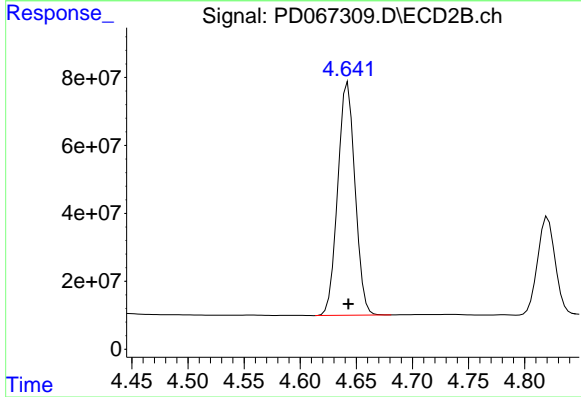
R.T.: 4.358 min  
 Delta R.T.: 0.000 min  
 Response: 853577396  
 Conc: 71.50 ng/ml



#3 gamma-BHC (Lindane)

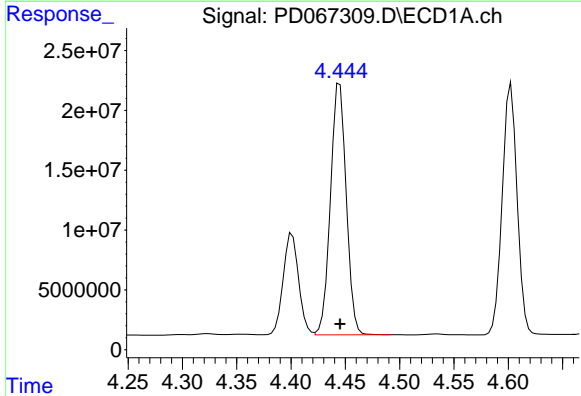
R.T.: 4.152 min  
 Delta R.T.: 0.000 min  
 Response: 205365324  
 Conc: 72.15 ng/ml

Instrument :  
 ECD\_D  
 ClientSampleId :  
 PSTDICC075



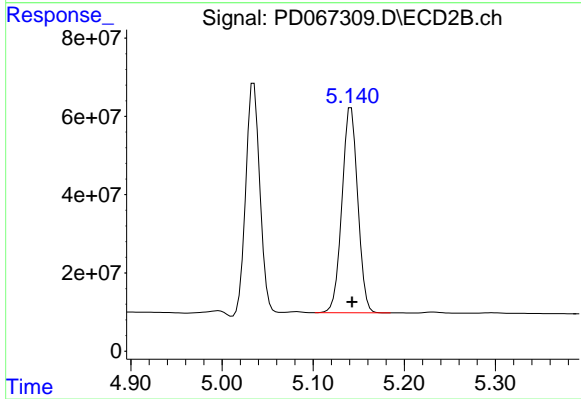
#3 gamma-BHC (Lindane)

R.T.: 4.642 min  
 Delta R.T.: 0.000 min  
 Response: 735371713  
 Conc: 70.41 ng/ml



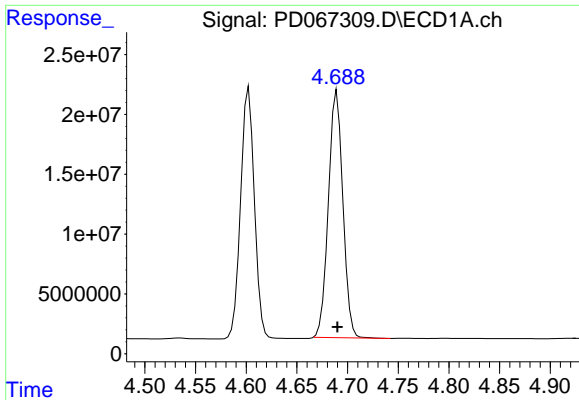
#4 Heptachlor

R.T.: 4.445 min  
 Delta R.T.: 0.000 min  
 Response: 212113771  
 Conc: 72.38 ng/ml



#4 Heptachlor

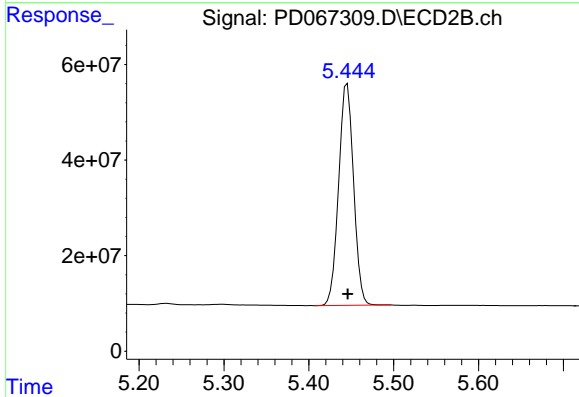
R.T.: 5.142 min  
 Delta R.T.: 0.000 min  
 Response: 631589021  
 Conc: 70.26 ng/ml



#5 Aldrin

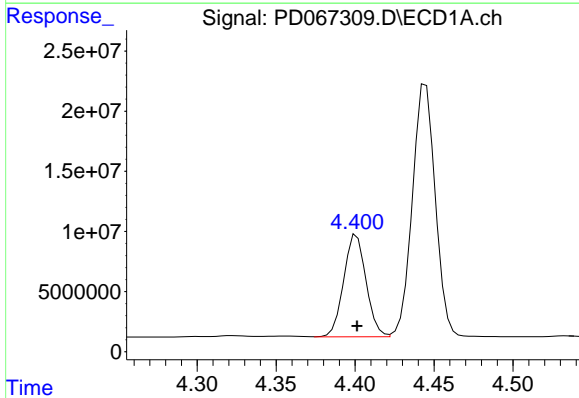
R.T.: 4.690 min  
 Delta R.T.: 0.000 min  
 Response: 205917779  
 Conc: 72.19 ng/ml

Instrument :  
 ECD\_D  
 ClientSampleId :  
 PSTDICC075



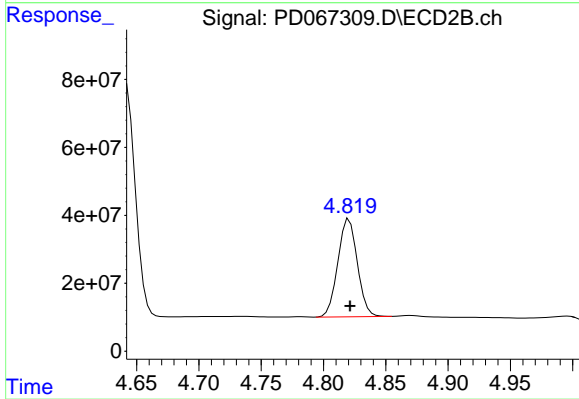
#5 Aldrin

R.T.: 5.445 min  
 Delta R.T.: 0.000 min  
 Response: 565979388  
 Conc: 70.40 ng/ml



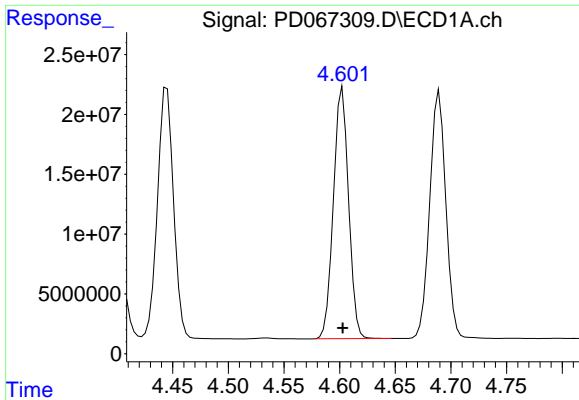
#6 beta-BHC

R.T.: 4.401 min  
 Delta R.T.: 0.000 min  
 Response: 84012620  
 Conc: 70.25 ng/ml



#6 beta-BHC

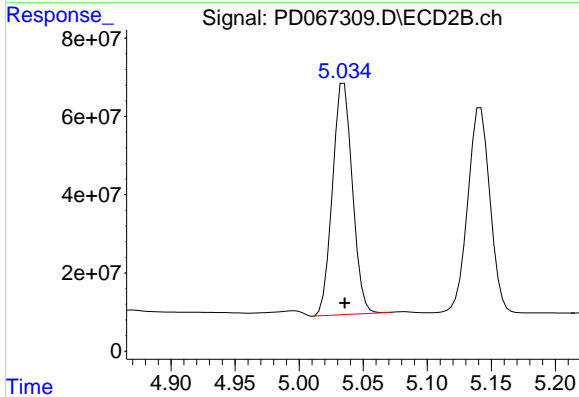
R.T.: 4.821 min  
 Delta R.T.: 0.000 min  
 Response: 314378958  
 Conc: 69.37 ng/ml



#7 delta-BHC

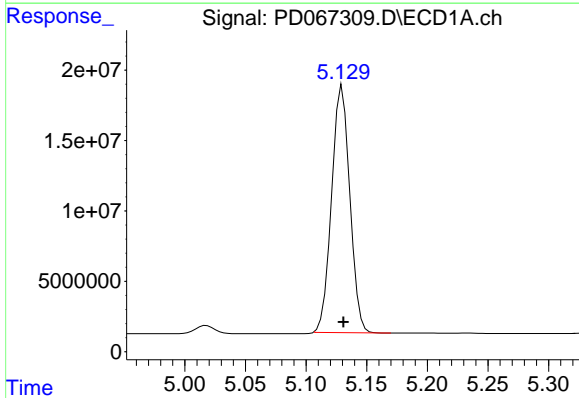
R.T.: 4.603 min  
 Delta R.T.: 0.000 min  
 Response: 199265864  
 Conc: 72.75 ng/ml

Instrument :  
 ECD\_D  
 ClientSampleId :  
 PSTDICC075



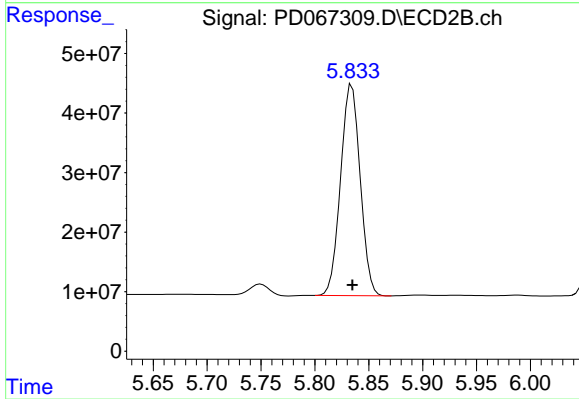
#7 delta-BHC

R.T.: 5.035 min  
 Delta R.T.: 0.000 min  
 Response: 638302719  
 Conc: 70.79 ng/ml



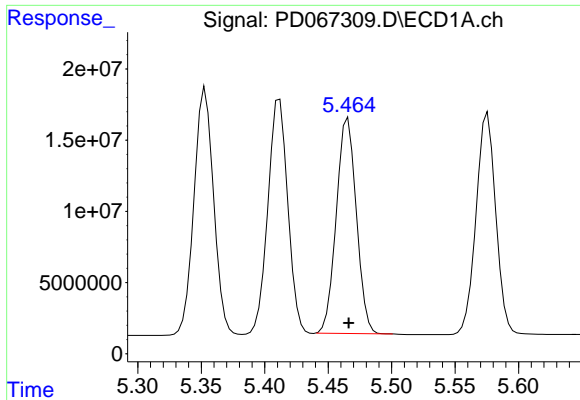
#8 Heptachlor epoxide

R.T.: 5.130 min  
 Delta R.T.: 0.000 min  
 Response: 183128092  
 Conc: 71.69 ng/ml



#8 Heptachlor epoxide

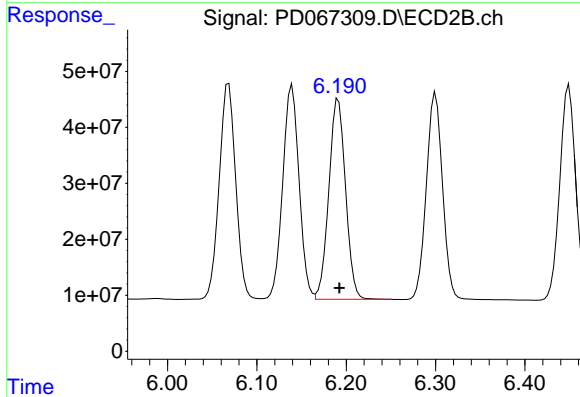
R.T.: 5.834 min  
 Delta R.T.: 0.000 min  
 Response: 449879274  
 Conc: 71.19 ng/ml



#9 Endosulfan I

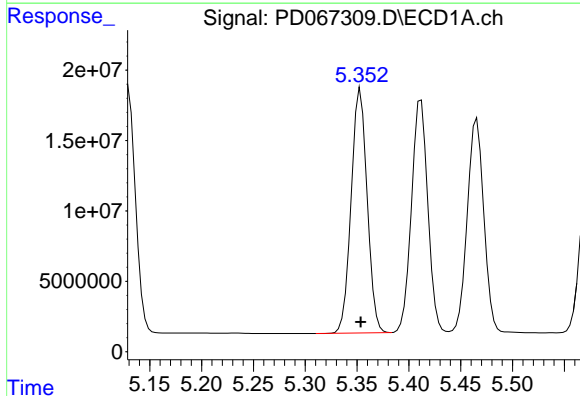
R.T.: 5.466 min  
 Delta R.T.: 0.000 min  
 Response: 166326536  
 Conc: 71.91 ng/ml

Instrument :  
 ECD\_D  
 ClientSampleId :  
 PSTDICC075



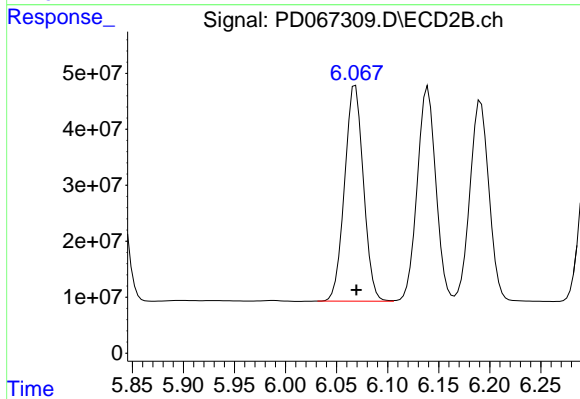
#9 Endosulfan I

R.T.: 6.191 min  
 Delta R.T.: -0.001 min  
 Response: 466130774  
 Conc: 69.79 ng/ml



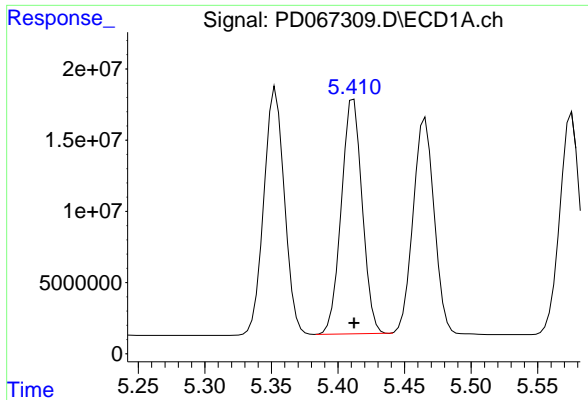
#10 gamma-Chlordane

R.T.: 5.353 min  
 Delta R.T.: 0.000 min  
 Response: 186093435  
 Conc: 72.29 ng/ml



#10 gamma-Chlordane

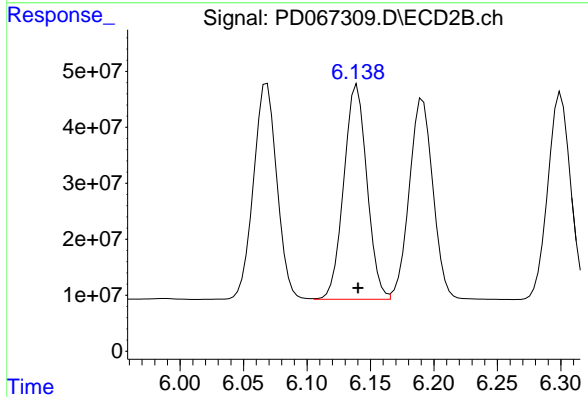
R.T.: 6.068 min  
 Delta R.T.: 0.000 min  
 Response: 494570830  
 Conc: 70.08 ng/ml



#11 alpha-Chlordane

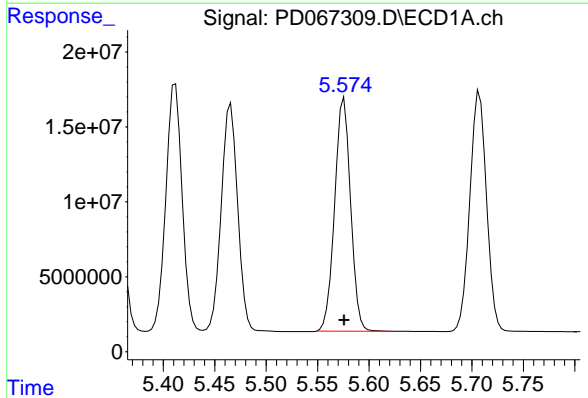
R.T.: 5.412 min  
 Delta R.T.: 0.000 min  
 Response: 180038232  
 Conc: 71.96 ng/ml

Instrument :  
 ECD\_D  
 ClientSampleId :  
 PSTDICC075



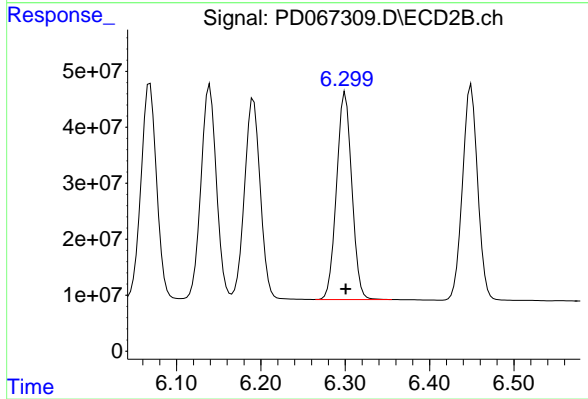
#11 alpha-Chlordane

R.T.: 6.139 min  
 Delta R.T.: 0.000 min  
 Response: 486446156  
 Conc: 69.92 ng/ml



#12 4,4'-DDE

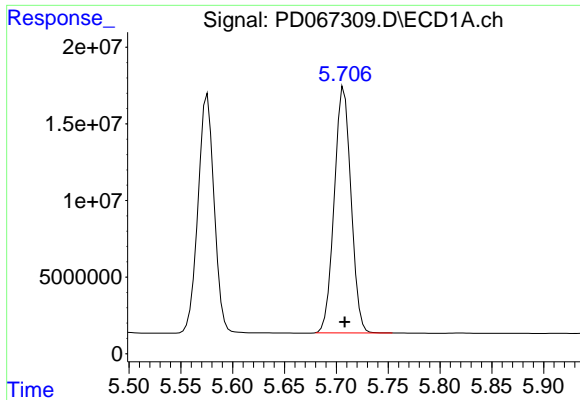
R.T.: 5.576 min  
 Delta R.T.: 0.000 min  
 Response: 167767361  
 Conc: 72.49 ng/ml



#12 4,4'-DDE

R.T.: 6.300 min  
 Delta R.T.: 0.000 min  
 Response: 465764723  
 Conc: 70.51 ng/ml

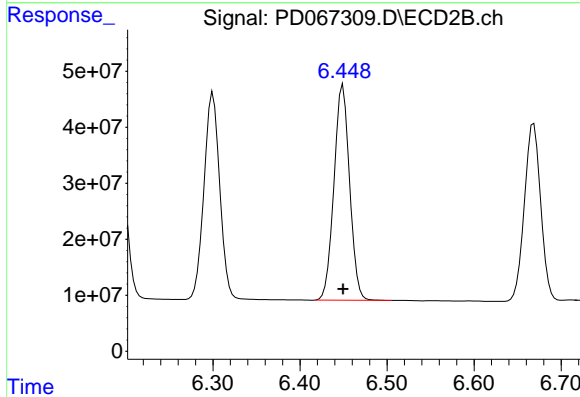




#13 Dieldrin

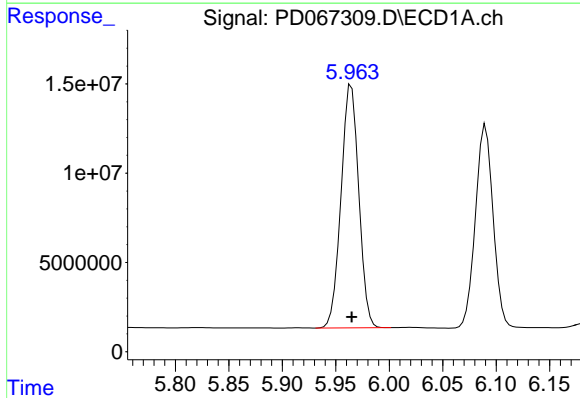
R.T.: 5.707 min  
 Delta R.T.: 0.000 min  
 Response: 180338404  
 Conc: 72.45 ng/ml

Instrument :  
 ECD\_D  
 ClientSampleId :  
 PSTDICC075



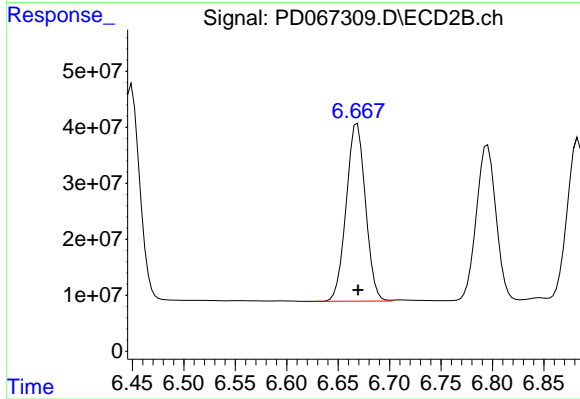
#13 Dieldrin

R.T.: 6.449 min  
 Delta R.T.: 0.000 min  
 Response: 480383658  
 Conc: 70.24 ng/ml



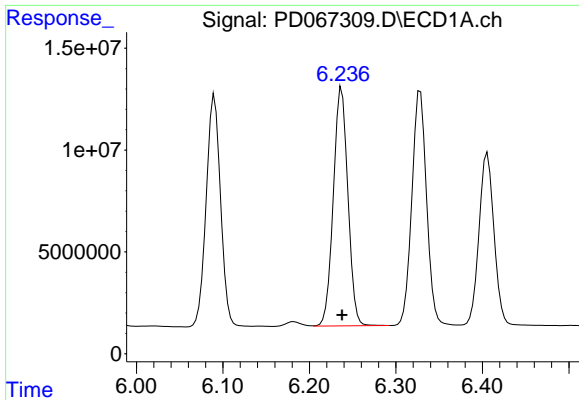
#14 Endrin

R.T.: 5.965 min  
 Delta R.T.: 0.000 min  
 Response: 157385831  
 Conc: 71.94 ng/ml



#14 Endrin

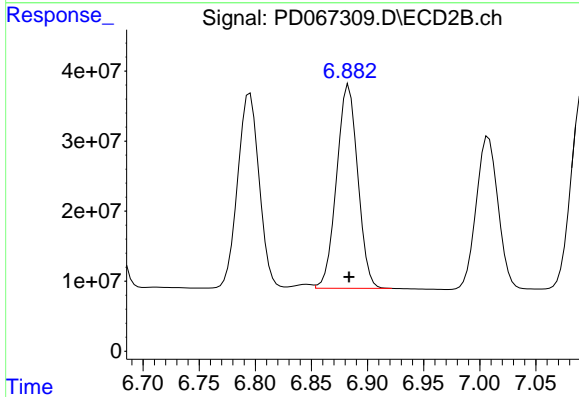
R.T.: 6.669 min  
 Delta R.T.: 0.000 min  
 Response: 413253622  
 Conc: 70.16 ng/ml



#15 Endosulfan II

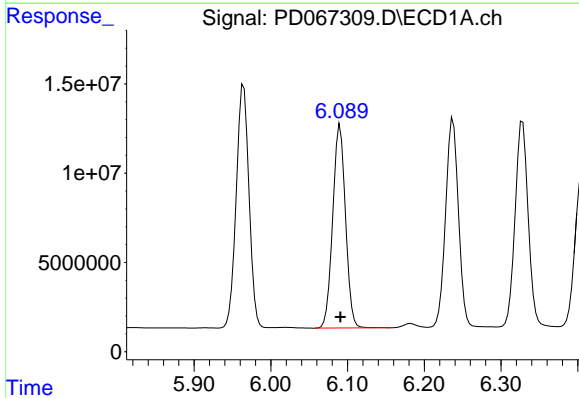
R.T.: 6.237 min  
Delta R.T.: 0.000 min  
Response: 136256987  
Conc: 71.30 ng/ml

Instrument :  
ECD\_D  
ClientSampleId :  
PSTDICC075



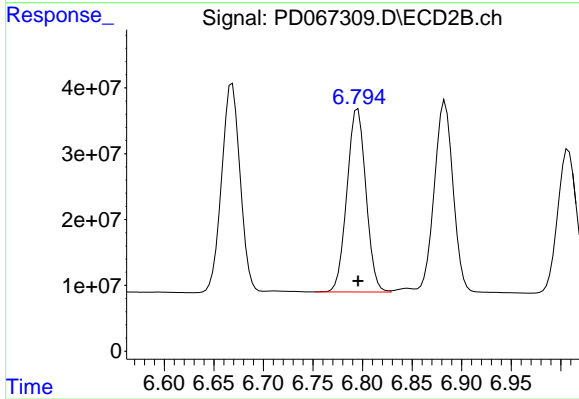
#15 Endosulfan II

R.T.: 6.883 min  
Delta R.T.: 0.000 min  
Response: 381512362  
Conc: 69.78 ng/ml



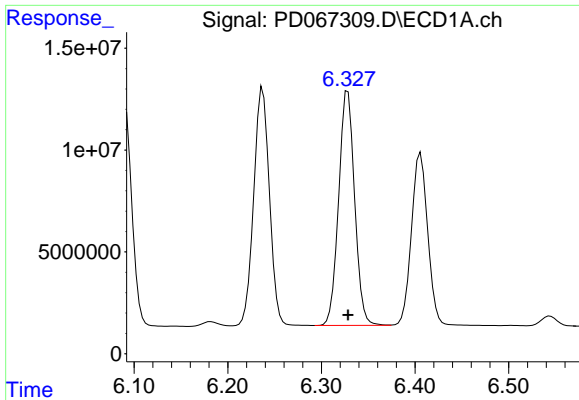
#16 4,4'-DDD

R.T.: 6.090 min  
Delta R.T.: 0.000 min  
Response: 131474242  
Conc: 72.56 ng/ml



#16 4,4'-DDD

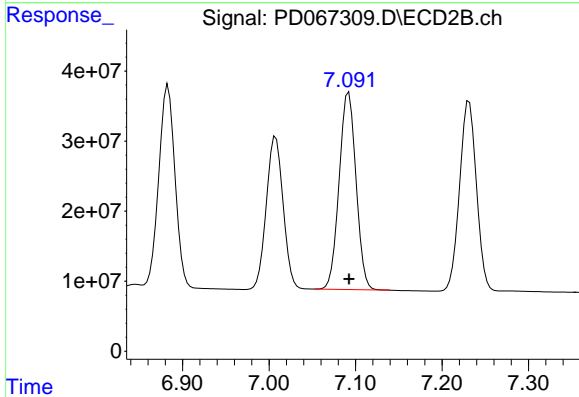
R.T.: 6.795 min  
Delta R.T.: 0.000 min  
Response: 371148962  
Conc: 70.19 ng/ml



#17 4,4'-DDT

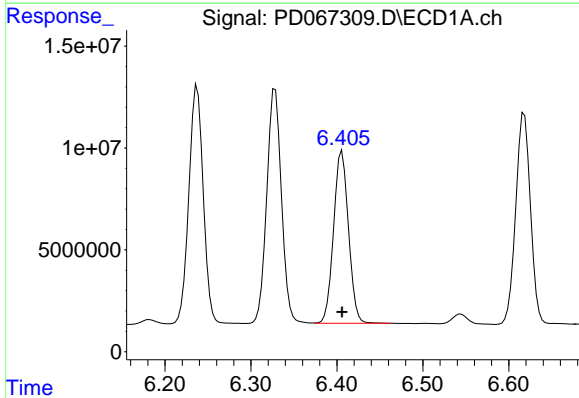
R.T.: 6.328 min  
 Delta R.T.: 0.000 min  
 Response: 136584729  
 Conc: 72.26 ng/ml

Instrument :  
 ECD\_D  
 ClientSampleId :  
 PSTDICC075



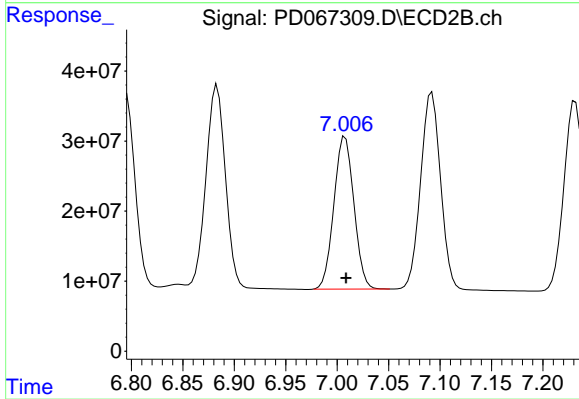
#17 4,4'-DDT

R.T.: 7.092 min  
 Delta R.T.: 0.000 min  
 Response: 379701527  
 Conc: 70.76 ng/ml



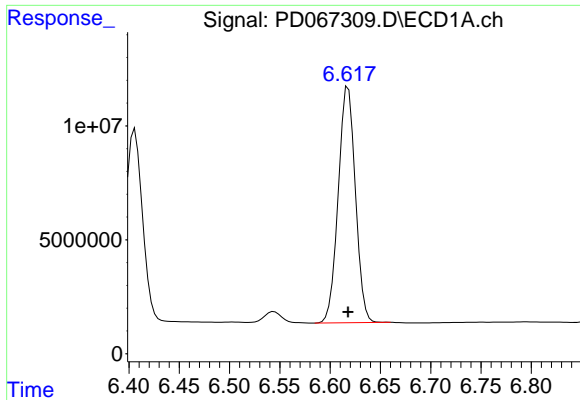
#18 Endrin aldehyde

R.T.: 6.406 min  
 Delta R.T.: 0.000 min  
 Response: 101675750  
 Conc: 71.46 ng/ml



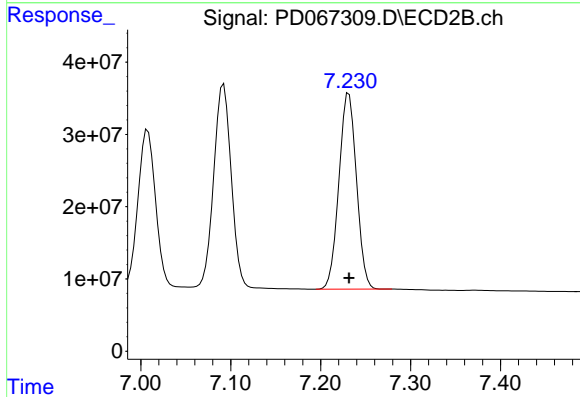
#18 Endrin aldehyde

R.T.: 7.008 min  
 Delta R.T.: 0.000 min  
 Response: 294503432  
 Conc: 70.24 ng/ml

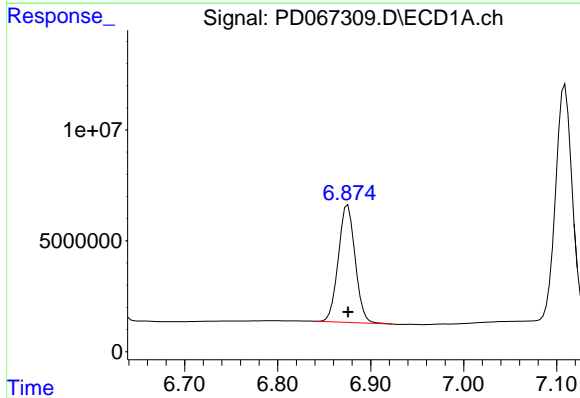


#19 Endosulfan Sulfate  
 R.T.: 6.618 min  
 Delta R.T.: 0.000 min  
 Response: 122714605  
 Conc: 70.99 ng/ml

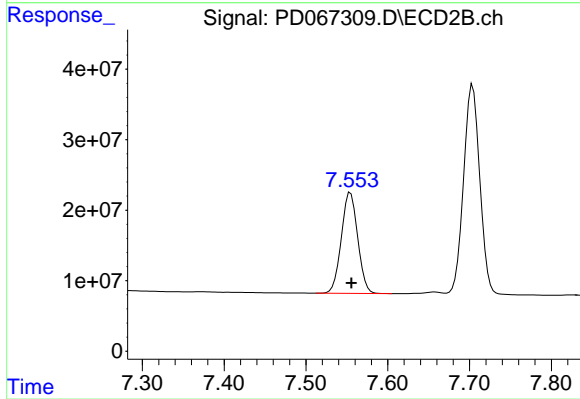
Instrument :  
 ECD\_D  
 ClientSampleId :  
 PSTDICC075



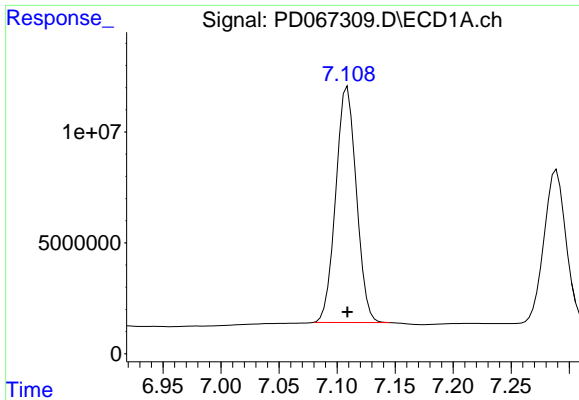
#19 Endosulfan Sulfate  
 R.T.: 7.231 min  
 Delta R.T.: 0.000 min  
 Response: 367710495  
 Conc: 69.72 ng/ml



#20 Methoxychlor  
 R.T.: 6.876 min  
 Delta R.T.: 0.000 min  
 Response: 66326926  
 Conc: 69.39 ng/ml



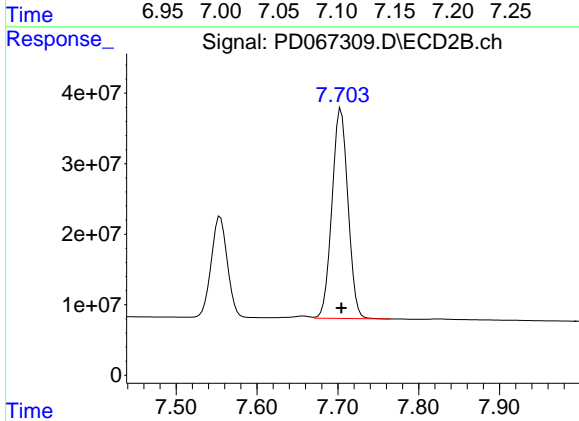
#20 Methoxychlor  
 R.T.: 7.554 min  
 Delta R.T.: -0.001 min  
 Response: 198230395  
 Conc: 69.16 ng/ml



#21 Endrin ketone

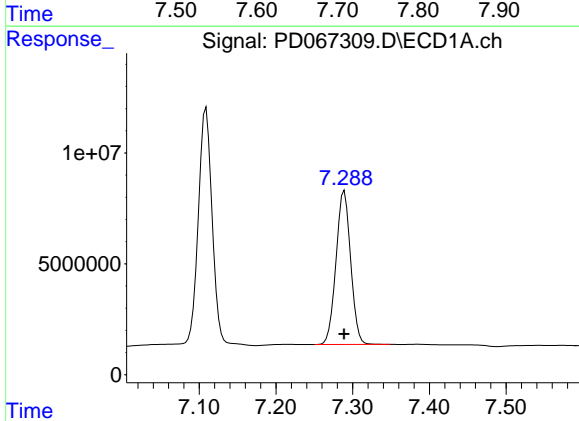
R.T.: 7.109 min  
 Delta R.T.: 0.000 min  
 Response: 131513330  
 Conc: 70.65 ng/ml

Instrument :  
 ECD\_D  
 ClientSampleId :  
 PSTDICC075



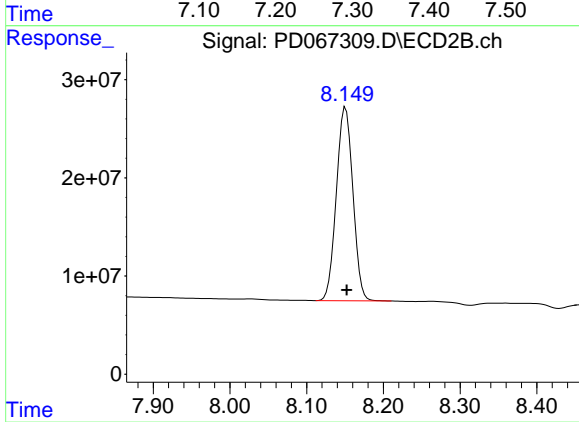
#21 Endrin ketone

R.T.: 7.704 min  
 Delta R.T.: 0.000 min  
 Response: 409385409  
 Conc: 69.92 ng/ml



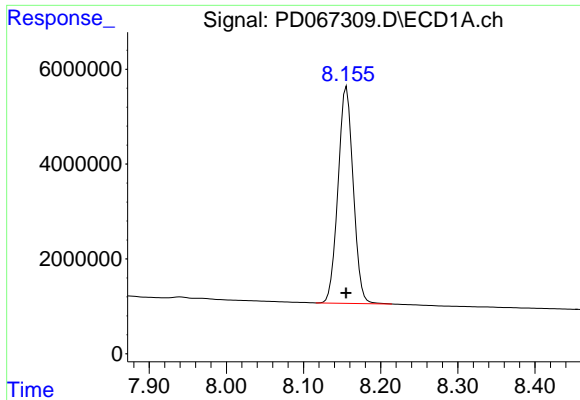
#22 Mirex

R.T.: 7.289 min  
 Delta R.T.: 0.000 min  
 Response: 91813509  
 Conc: 69.46 ng/ml



#22 Mirex

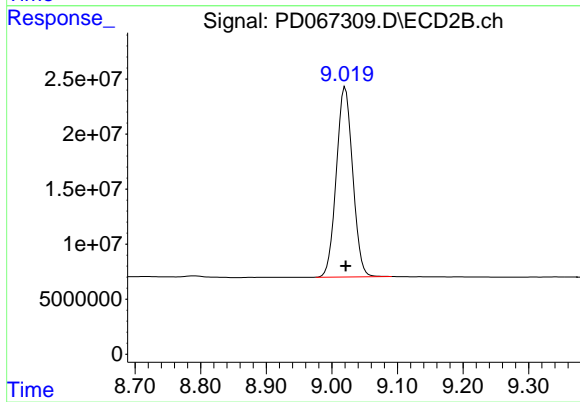
R.T.: 8.151 min  
 Delta R.T.: -0.001 min  
 Response: 295619675  
 Conc: 68.79 ng/ml



#28 Decachlorobiphenyl

R.T.: 8.156 min  
Delta R.T.: 0.000 min  
Response: 62374462  
Conc: 68.97 ng/ml

Instrument :  
ECD\_D  
ClientSampleId :  
PSTDICC075



#28 Decachlorobiphenyl

R.T.: 9.020 min  
Delta R.T.: 0.000 min  
Response: 299300328  
Conc: 68.82 ng/ml