

Data Path : Z:\pestpcbsrv\HPCHEM1\ECD_D\Data\PD121422\
 Data File : PD073314.D
 Signal(s) : Signal #1: ECD1A.ch Signal #2: ECD2B.ch
 Acq On : 14 Dec 2022 16:26
 Operator : AR\AJ
 Sample : TOXAPH501
 Misc :
 ALS Vial : 8 Sample Multiplier: 1

Instrument :
 ECD_D
 ClientSampleId :

Integration File signal 1: autoint1.e
 Integration File signal 2: autoint2.e
 Quant Time: Dec 15 03:21:38 2022
 Quant Method : Z:\pestpcbsrv\HPCHEM1\ECD_D\Method\PD121422CLP.M
 Quant Title : GC Extractables
 QLast Update : Thu Dec 15 03:17:32 2022
 Response via : Initial Calibration
 Integrator: ChemStation

Volume Inj. : 1 µl
 Signal #1 Phase : ZB-MR2 Signal #2 Phase: ZB-MR1
 Signal #1 Info : 30M x 0.32mm x0.2 Signal #2 Info : 30M x 0.32mm x 0.50µm

Compound	RT#1	RT#2	Resp#1	Resp#2	ng/ml	ng/ml

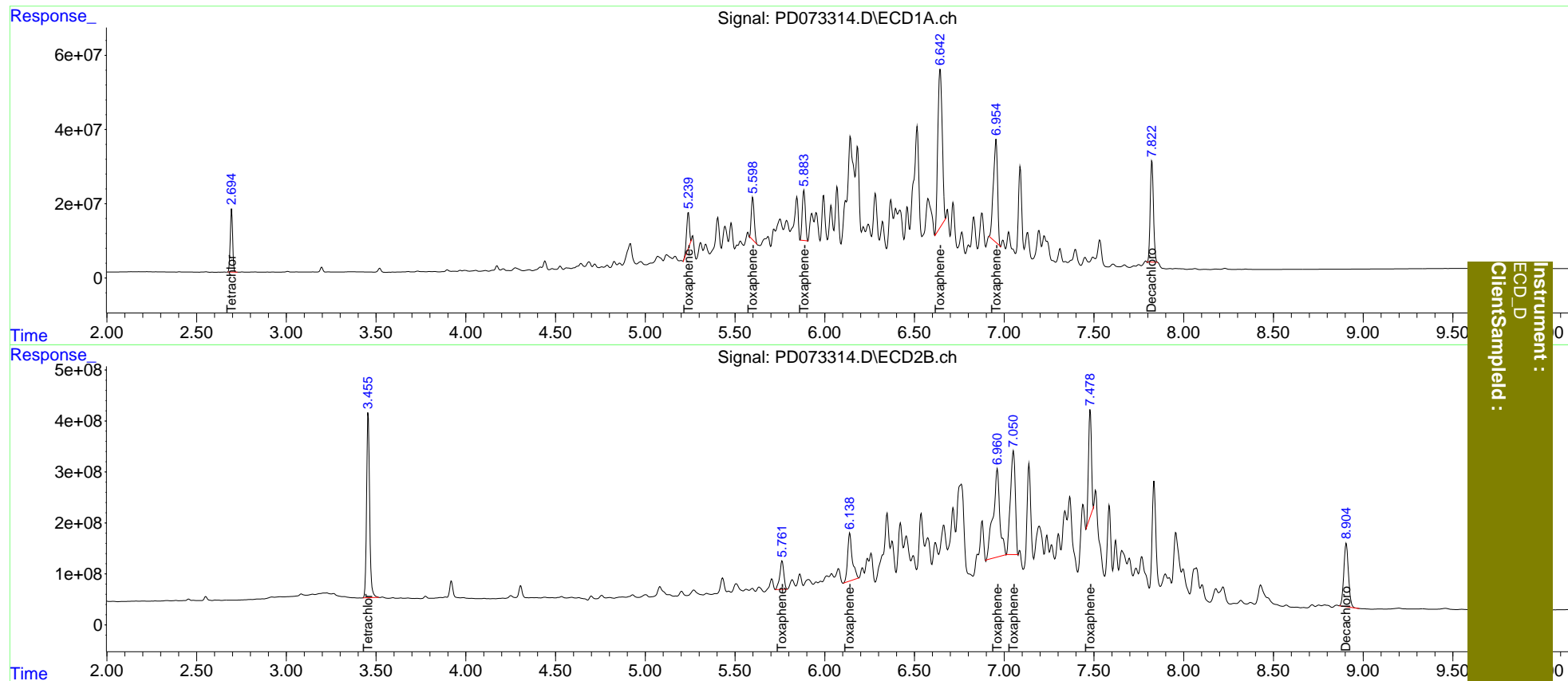
System Monitoring Compounds						
1) SA Tetrachlo...	2.695	3.456	155.5E6	4278.3E6	76.541	67.273
27) SA Decachlor...	7.823	8.906	340.3E6	2230.2E6	154.326	154.407
Target Compounds						
22) Toxaphene-1	5.240	5.763	102.9E6	877.9E6	8023.877	7022.899
23) Toxaphene-2	5.599	6.139	127.7E6	1691.9E6	8417.469	7331.641
24) Toxaphene-3	5.884	6.962	162.6E6	4544.3E6	8122.184	8286.750
25) Toxaphene-4	6.643	7.051	724.8E6	3822.5E6	8572.634	8069.051
26) Toxaphene-5	6.955	7.479	443.9E6	2348.2E6	8878.056	8200.241

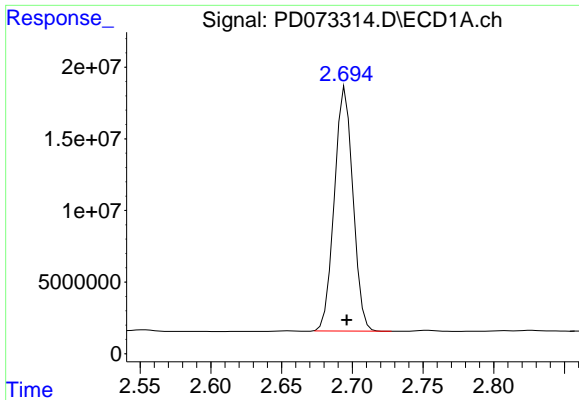
(f)=RT Delta > 1/2 Window (#)=Amounts differ by > 25% (m)=manual int.

Data Path : Z:\pestpcbsrv\HPCHEM1\ECD_D\Data\PD121422\
 Data File : PD073314.D
 Signal(s) : Signal #1: ECD1A.ch Signal #2: ECD2B.ch
 Acq On : 14 Dec 2022 16:26
 Operator : AR\AJ
 Sample : TOXAPH501
 Misc :
 ALS Vial : 8 Sample Multiplier: 1

Integration File signal 1: autoint1.e
 Integration File signal 2: autoint2.e
 Quant Time: Dec 15 03:21:38 2022
 Quant Method : Z:\pestpcbsrv\HPCHEM1\ECD_D\Method\PD121422CLP.M
 Quant Title : GC Extractables
 QLast Update : Thu Dec 15 03:17:32 2022
 Response via : Initial Calibration
 Integrator: ChemStation

Volume Inj. : 1 µl
 Signal #1 Phase : ZB-MR2 Signal #2 Phase: ZB-MR1
 Signal #1 Info : 30M x 0.32mm x0.2 Signal #2 Info : 30M x 0.32mm x 0.50µm

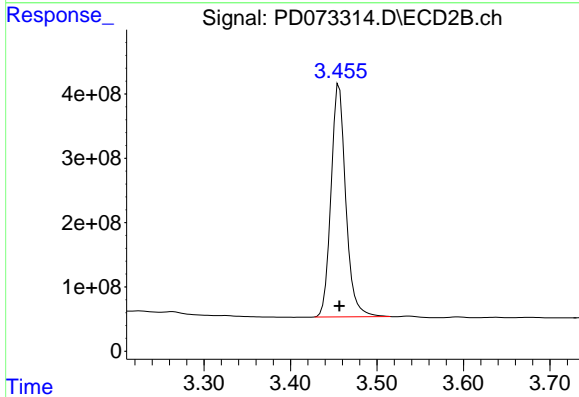




#1 Tetrachloro-m-xylene

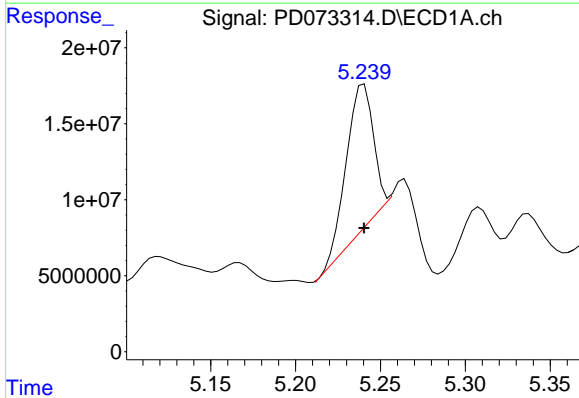
R.T.: 2.695 min
 Delta R.T.: 0.000 min
 Response: 155481733
 Conc: 76.54 ng/ml

Instrument :
 ECD_D
 ClientSampleId :



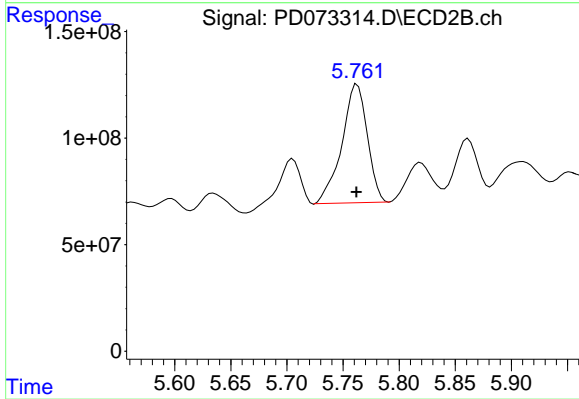
#1 Tetrachloro-m-xylene

R.T.: 3.456 min
 Delta R.T.: 0.000 min
 Response: 4278281425
 Conc: 67.27 ng/ml



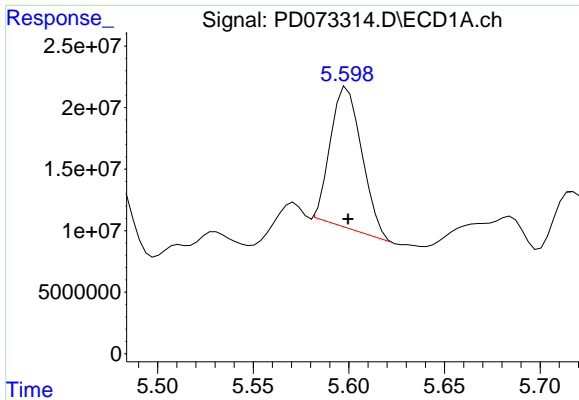
#22 Toxaphene-1

R.T.: 5.240 min
 Delta R.T.: 0.000 min
 Response: 102869305
 Conc: 8023.88 ng/ml



#22 Toxaphene-1

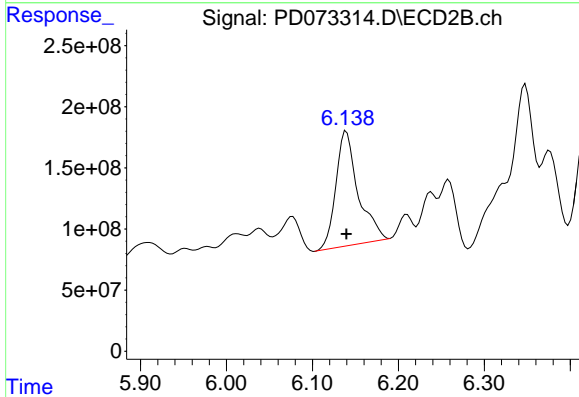
R.T.: 5.763 min
 Delta R.T.: 0.000 min
 Response: 877857564
 Conc: 7022.90 ng/ml



#23 Toxaphene-2

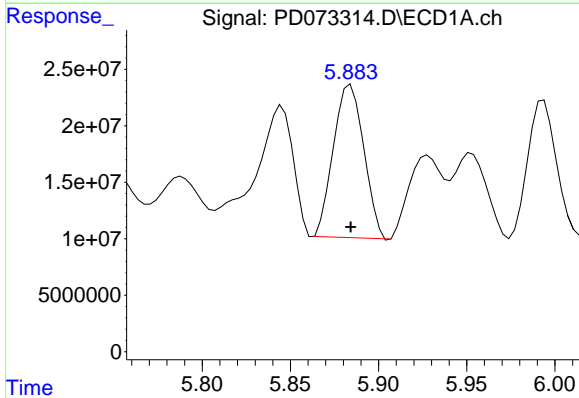
R.T.: 5.599 min
 Delta R.T.: 0.000 min
 Response: 127671036
 Conc: 8417.47 ng/ml

Instrument :
 ECD_D
 ClientSampleId :



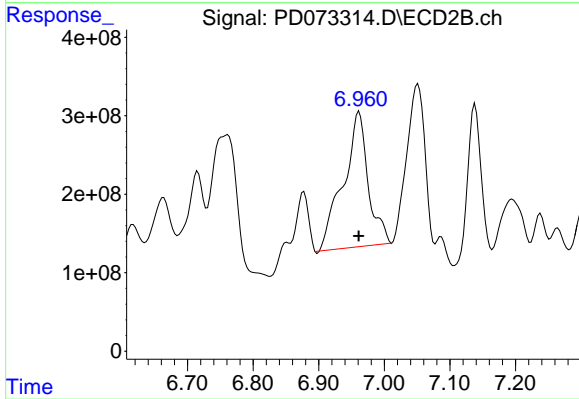
#23 Toxaphene-2

R.T.: 6.139 min
 Delta R.T.: 0.000 min
 Response: 1691923722
 Conc: 7331.64 ng/ml



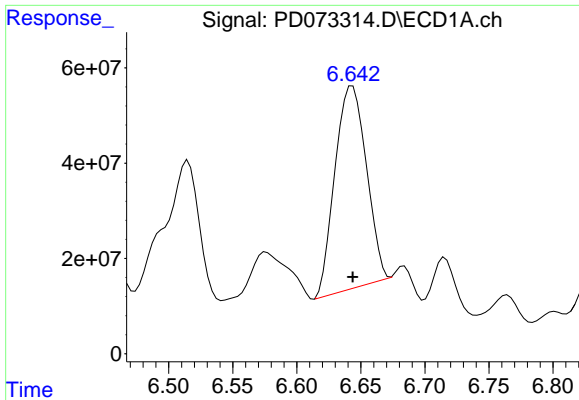
#24 Toxaphene-3

R.T.: 5.884 min
 Delta R.T.: 0.000 min
 Response: 162563421
 Conc: 8122.18 ng/ml



#24 Toxaphene-3

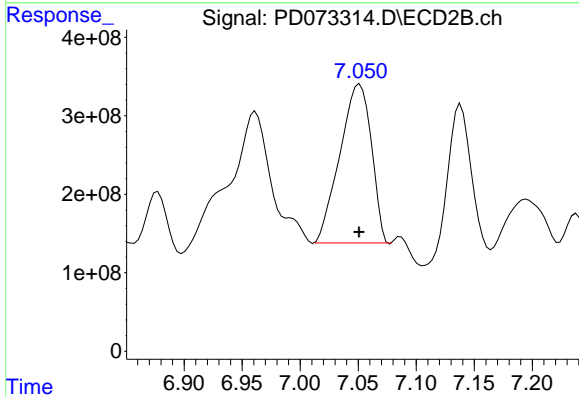
R.T.: 6.962 min
 Delta R.T.: 0.000 min
 Response: 4544293852
 Conc: 8286.75 ng/ml



#25 Toxaphene-4

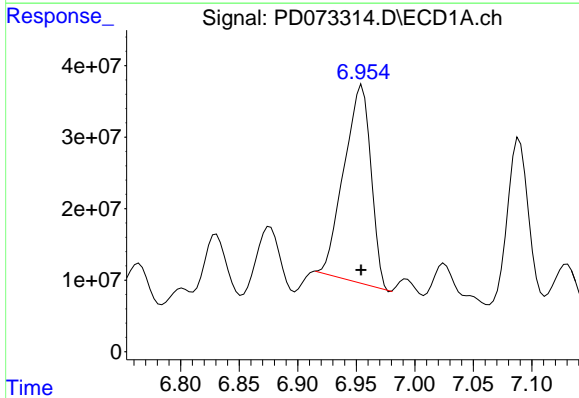
R.T.: 6.643 min
 Delta R.T.: 0.000 min
 Response: 724768575
 Conc: 8572.63 ng/ml

Instrument :
 ECD_D
 ClientSampleId :



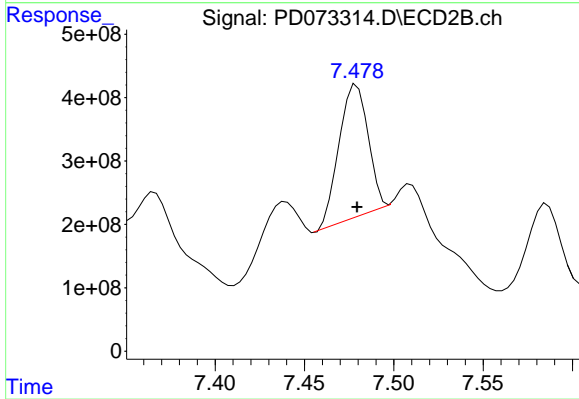
#25 Toxaphene-4

R.T.: 7.051 min
 Delta R.T.: 0.000 min
 Response: 3822547015
 Conc: 8069.05 ng/ml



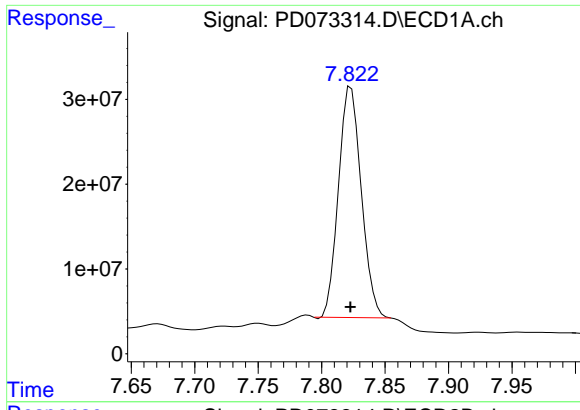
#26 Toxaphene-5

R.T.: 6.955 min
 Delta R.T.: 0.000 min
 Response: 443888203
 Conc: 8878.06 ng/ml



#26 Toxaphene-5

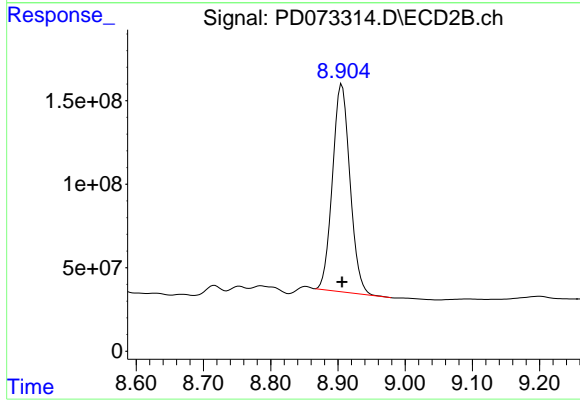
R.T.: 7.479 min
 Delta R.T.: 0.000 min
 Response: 2348233159
 Conc: 8200.24 ng/ml



#27 Decachlorobiphenyl

R.T.: 7.823 min
Delta R.T.: 0.000 min
Response: 340296025
Conc: 154.33 ng/ml

Instrument :
ECD_D
ClientSampleId :



#27 Decachlorobiphenyl

R.T.: 8.906 min
Delta R.T.: 0.000 min
Response: 2230150028
Conc: 154.41 ng/ml