

Data Path : Z:\pestpcbsrv\HPCHEM1\ECD\_D\Data\PD121620\  
 Data File : PD060732.D  
 Signal(s) : Signal #1: ECD1A.ch Signal #2: ECD2B.ch  
 Acq On : 16 Dec 2020 16:44  
 Operator : DD\AJ  
 Sample : I.BLK  
 Misc :  
 ALS Vial : 2 Sample Multiplier: 1

Instrument :  
 ECD\_D  
 ClientSampleId :

Integration File signal 1: autoint1.e  
 Integration File signal 2: autoint2.e  
 Quant Time: Dec 17 04:50:47 2020  
 Quant Method : Z:\pestpcbsrv\HPCHEM1\ECD\_D\Method\PD121620.M  
 Quant Title : GC Extractables  
 QLast Update : Thu Dec 17 03:53:08 2020  
 Response via : Initial Calibration  
 Integrator: ChemStation

Volume Inj. : 2 µl  
 Signal #1 Phase : ZB-MR2 Signal #2 Phase: ZB-MR1  
 Signal #1 Info : 30M x 0.32mm x0.2 Signal #2 Info : 30M x 0.32mm x 0.50µm

Compound	RT#1	RT#2	Resp#1	Resp#2	ng/ml	ng/ml
-----						
System Monitoring Compounds						
1) SA Tetrachlo...	3.500	4.021	23752499	101.2E6	21.847	21.537
28) SA Decachlor...	8.288	9.105	31192963	82856761	22.080	22.177
Target Compounds						
17) MA 4,4'-DDT	0.000	7.127f	0	2014793	N.D.	0.452 #
-----						

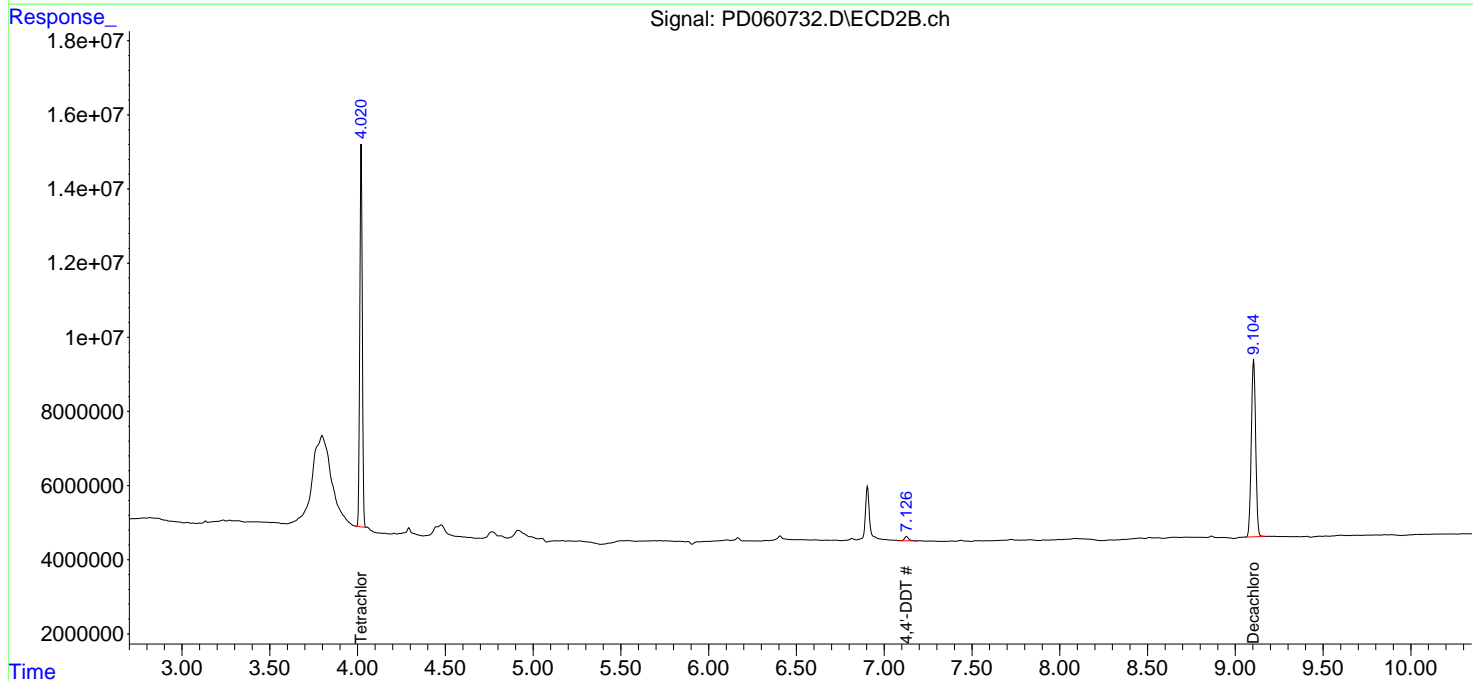
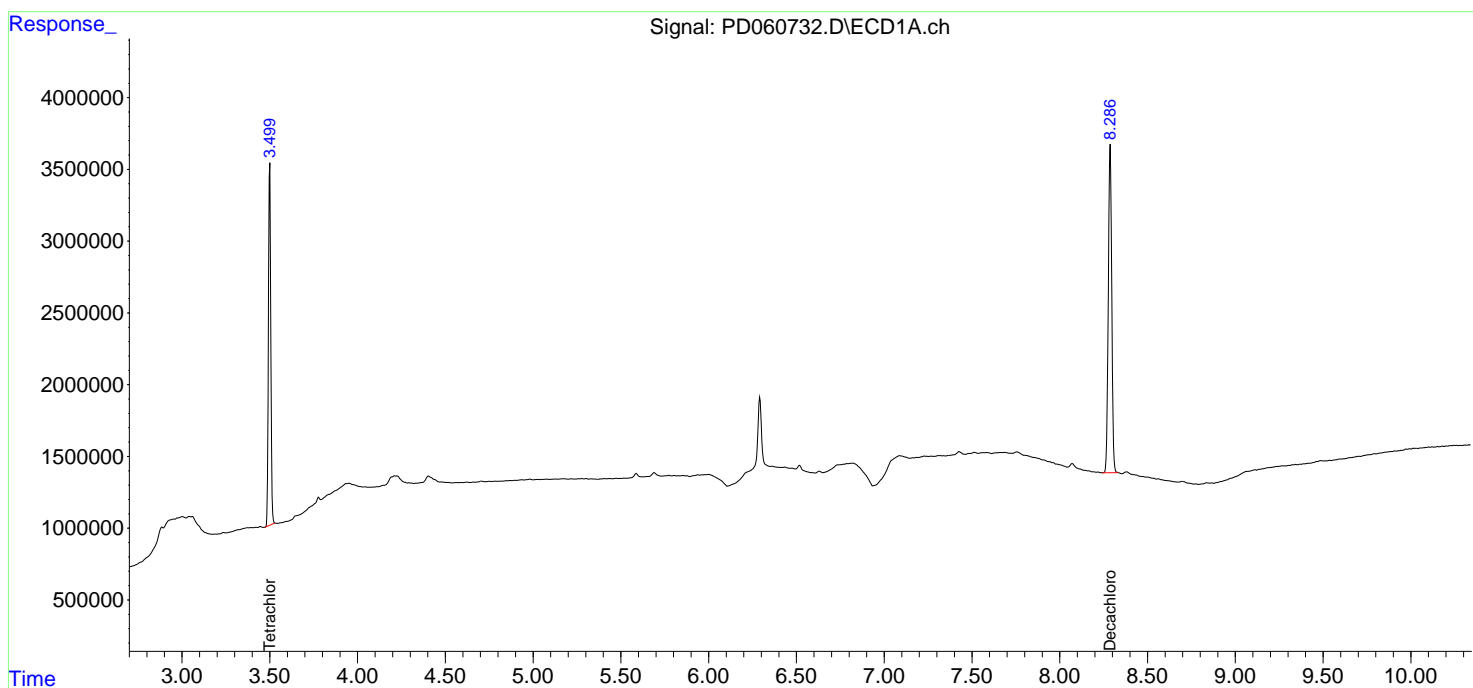
(f)=RT Delta > 1/2 Window (#)=Amounts differ by > 25% (m)=manual int.

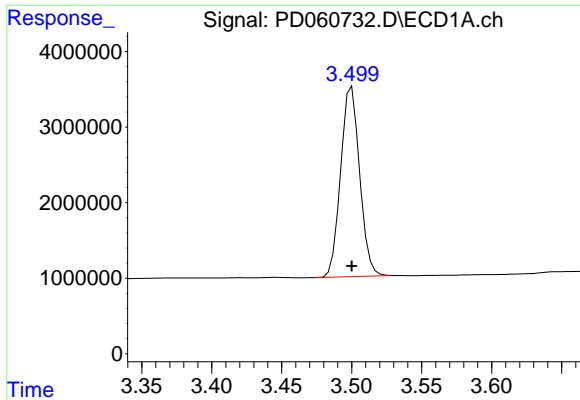
Data Path : Z:\pestpcbsrv\HPCHEM1\ECD\_D\Data\PD121620\  
 Data File : PD060732.D  
 Signal(s) : Signal #1: ECD1A.ch Signal #2: ECD2B.ch  
 Acq On : 16 Dec 2020 16:44  
 Operator : DD\AJ  
 Sample : I.BLK  
 Misc :  
 ALS Vial : 2 Sample Multiplier: 1

Instrument :  
 ECD\_D  
 ClientSampled :

Integration File signal 1: autoint1.e  
 Integration File signal 2: autoint2.e  
 Quant Time: Dec 17 04:50:47 2020  
 Quant Method : Z:\pestpcbsrv\HPCHEM1\ECD\_D\Method\PD121620.M  
 Quant Title : GC Extractables  
 QLast Update : Thu Dec 17 03:53:08 2020  
 Response via : Initial Calibration  
 Integrator: ChemStation

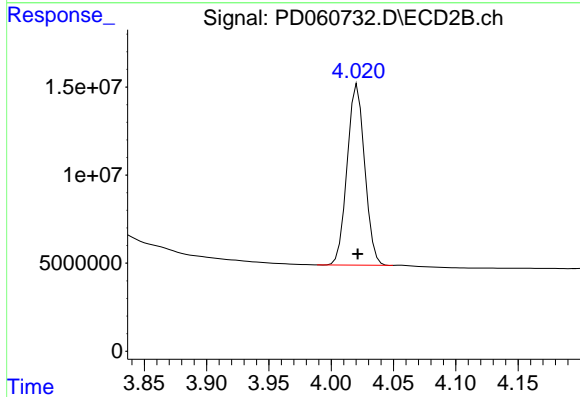
Volume Inj. : 2 µl  
 Signal #1 Phase : ZB-MR2 Signal #2 Phase: ZB-MR1  
 Signal #1 Info : 30M x 0.32mm x0.2 Signal #2 Info : 30M x 0.32mm x 0.50µm



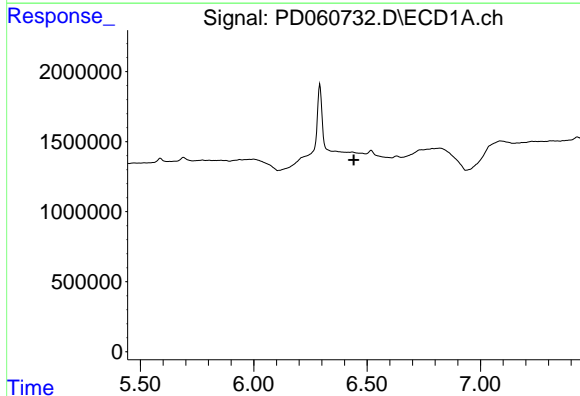


#1 Tetrachloro-m-xylene  
 R.T.: 3.500 min  
 Delta R.T.: 0.000 min  
 Response: 23752499  
 Conc: 21.85 ng/ml

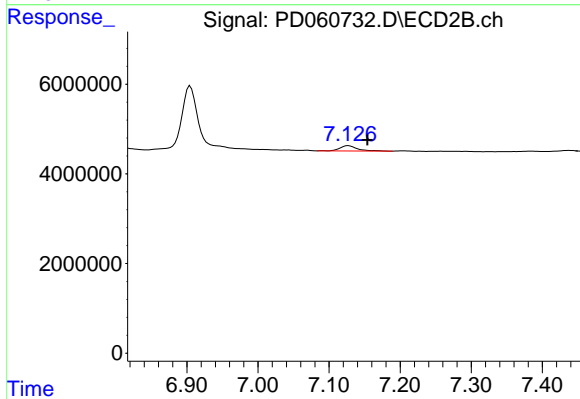
Instrument :  
 ECD\_D  
 ClientSampleId :



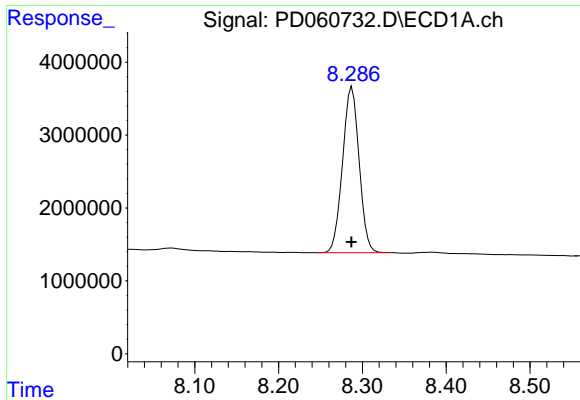
#1 Tetrachloro-m-xylene  
 R.T.: 4.021 min  
 Delta R.T.: 0.000 min  
 Response: 101213617  
 Conc: 21.54 ng/ml



#17 4,4'-DDT  
 R.T.: 0.000 min  
 Exp R.T. : 6.441 min  
 Response: 0  
 Conc: N.D.



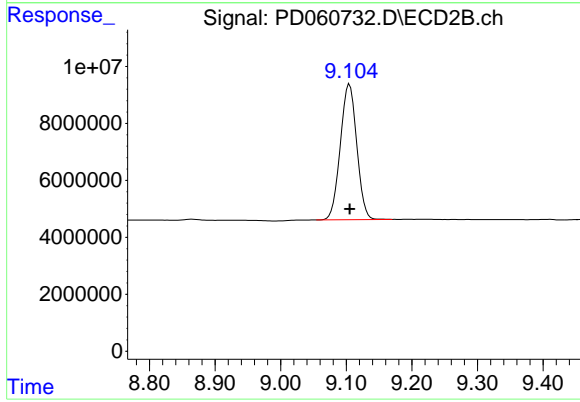
#17 4,4'-DDT  
 R.T.: 7.127 min  
 Delta R.T.: -0.027 min  
 Response: 2014793  
 Conc: 0.45 ng/ml



#28 Decachlorobiphenyl

R.T.: 8.288 min  
Delta R.T.: 0.000 min  
Response: 31192963  
Conc: 22.08 ng/ml

Instrument :  
ECD\_D  
ClientSampleId :



#28 Decachlorobiphenyl

R.T.: 9.105 min  
Delta R.T.: 0.000 min  
Response: 82856761  
Conc: 22.18 ng/ml