

Data Path : Z:\pestpcbsrv\HPCHEM1\ECD\_D\Data\PD121621\  
 Data File : PD067406.D  
 Signal(s) : Signal #1: ECD1A.ch Signal #2: ECD2B.ch  
 Acq On : 16 Dec 2021 21:54  
 Operator : AR\AJ  
 Sample : INDA351  
 Misc :  
 ALS Vial : 32 Sample Multiplier: 1

**Instrument :**

ECD\_D

**LabSampleId :**

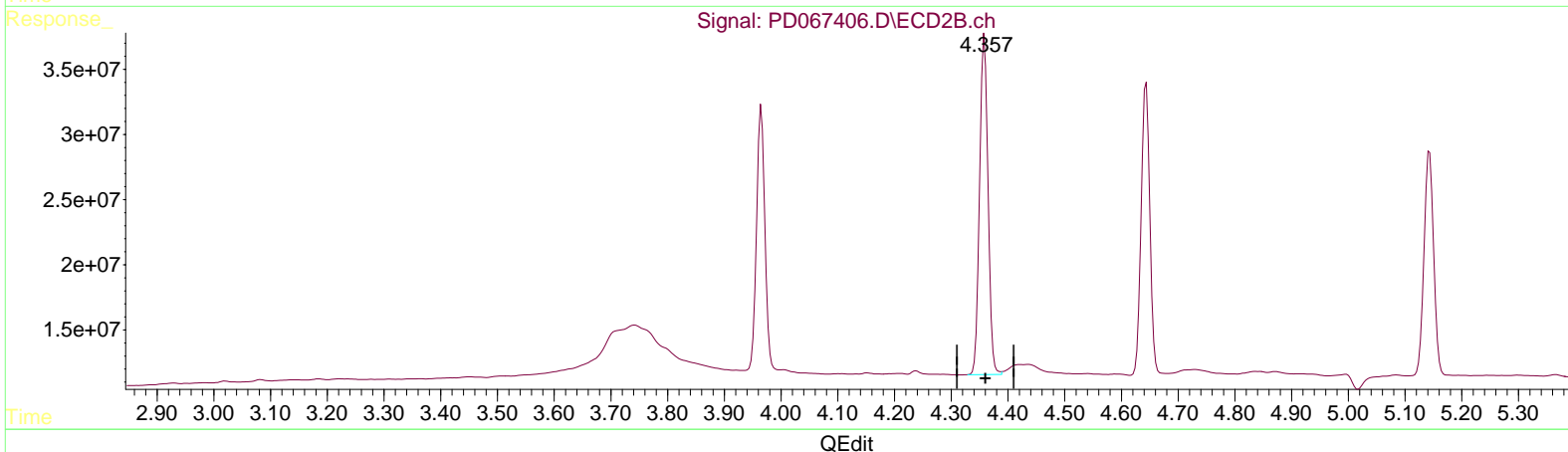
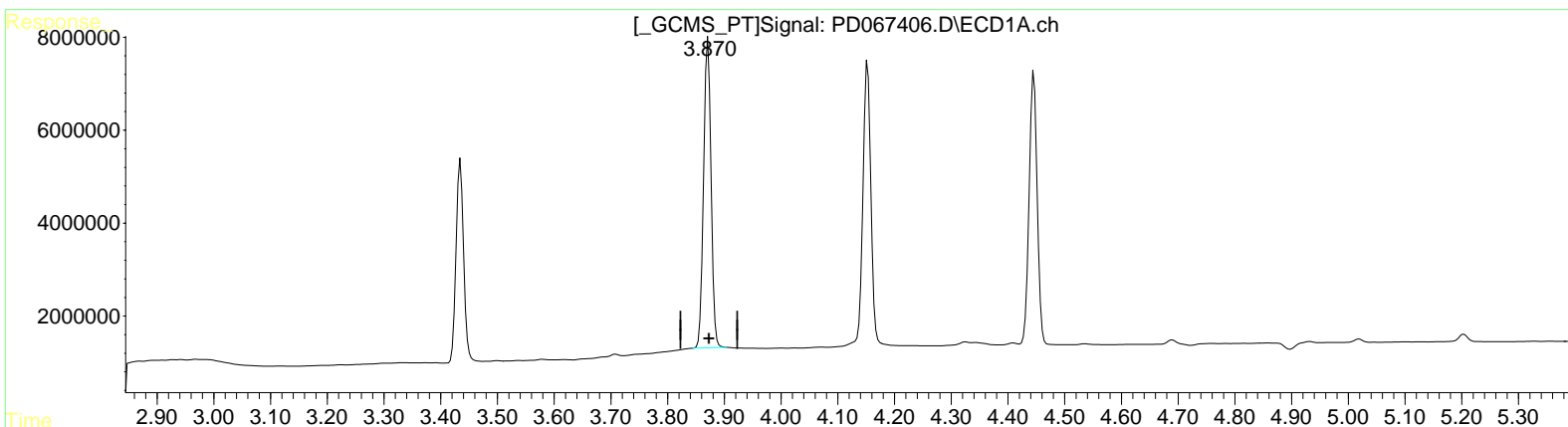
INDA351

**Manual IntegrationsAPPROVED**

Reviewed By :Abdul Mirza 12/17/2021  
 Supervised By :Ankita Jodhani 12/17/2021

Integration File signal 1: autoint1.e  
 Integration File signal 2: autoint2.e  
 Quant Time: Dec 17 01:21:43 2021  
 Quant Method : Z:\pestpcbsrv\HPCHEM1\ECD\_D\Method\PD112921CLP.M  
 Quant Title : GC Extractables  
 QLast Update : Tue Nov 30 05:28:01 2021  
 Response via : Initial Calibration  
 Integrator: ChemStation

Volume Inj. : 1 µl  
 Signal #1 Phase : ZB-MR2 Signal #2 Phase: ZB-MR1  
 Signal #1 Info : 30M x 0.32mm x0.2 Signal #2 Info : 30M x 0.32mm x 0.50µm



(2) alpha-BHC (A)  
 3.871min 18.557 ng/ml  
 response 60697033

(2) alpha-BHC #2 (A)  
 4.359min 25.096 ng/ml  
 response 269236821

Data Path : Z:\pestpcbsrv\HPCHEM1\ECD\_D\Data\PD121621\  
 Data File : PD067406.D  
 Signal(s) : Signal #1: ECD1A.ch Signal #2: ECD2B.ch  
 Acq On : 16 Dec 2021 21:54  
 Operator : AR\AJ  
 Sample : INDA351  
 Misc :  
 ALS Vial : 32 Sample Multiplier: 1

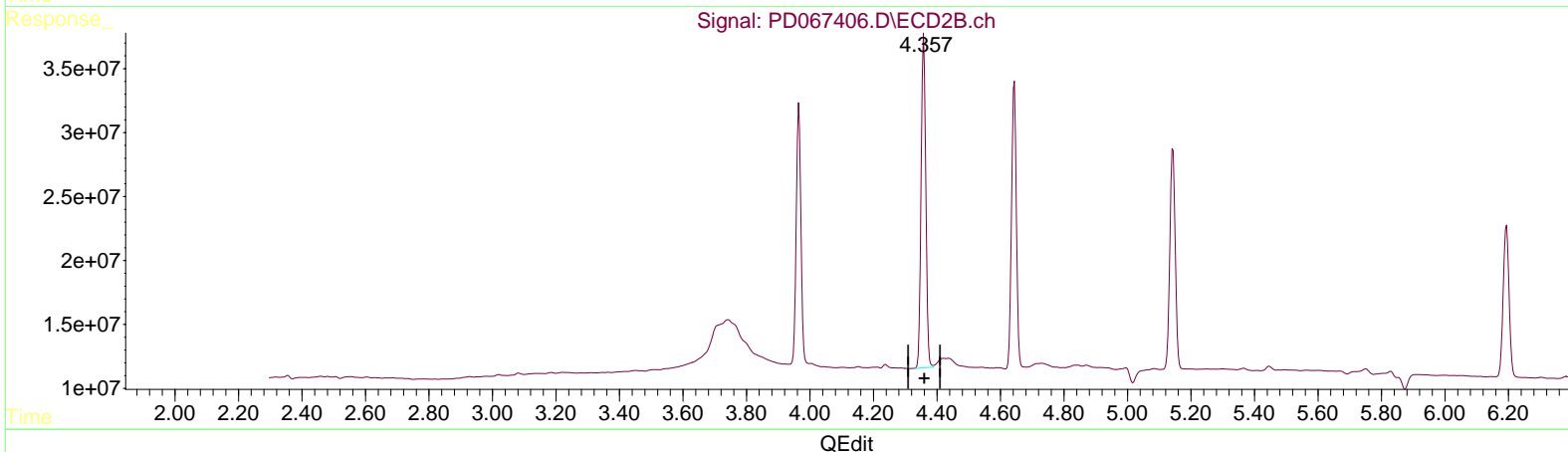
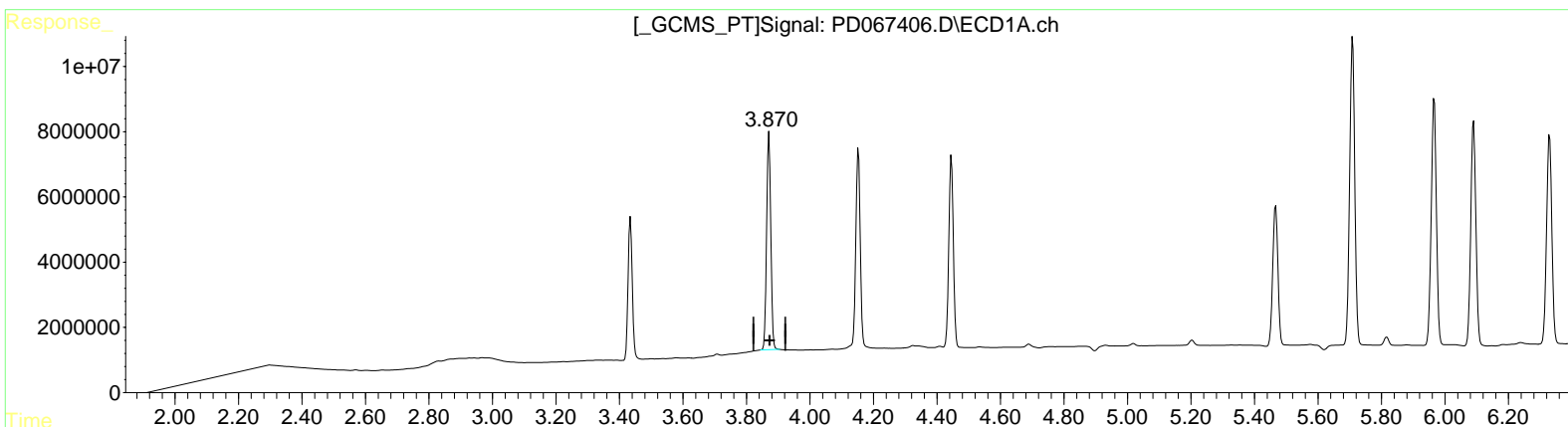
Instrument :  
 ECD\_D  
 LabSampleID :  
 INDA351

Manual Integrations APPROVED

Reviewed By : Abdul Mirza 12/17/2021  
 Supervised By : Ankita Jodhani 12/17/2021

Integration File signal 1: autoint1.e  
 Integration File signal 2: autoint2.e  
 Quant Time: Dec 17 01:21:43 2021  
 Quant Method : Z:\pestpcbsrv\HPCHEM1\ECD\_D\Method\PD112921CLP.M  
 Quant Title : GC Extractables  
 QLast Update : Tue Nov 30 05:28:01 2021  
 Response via : Initial Calibration  
 Integrator: ChemStation

Volume Inj. : 1 µl  
 Signal #1 Phase : ZB-MR2 Signal #2 Phase: ZB-MR1  
 Signal #1 Info : 30M x 0.32mm x 0.2 Signal #2 Info : 30M x 0.32mm x 0.50µm



(2) alpha-BHC (A)  
 3.871min 18.557 ng/ml  
 response 60697033

(2) alpha-BHC #2 (A)  
 4.357min 24.977 ng/ml m  
 response 267959302