

Data Path : Z:\pestpcbsrv\HPCHEM1\ECD_D\Data\PD121622\
 Data File : PD073334.D
 Signal(s) : Signal #1: ECD1A.ch Signal #2: ECD2B.ch
 Acq On : 16 Dec 2022 11:51
 Operator : AR\AJ
 Sample : PSTDICC025
 Misc :
 ALS Vial : 8 Sample Multiplier: 1

Instrument :
 ECD_D
 ClientSampleId :
 PSTDICC025

Integration File signal 1: autoint1.e
 Integration File signal 2: autoint2.e
 Quant Time: Dec 16 12:51:21 2022
 Quant Method : Z:\pestpcbsrv\HPCHEM1\ECD_D\Method\PD121622.M
 Quant Title : GC Extractables
 QLast Update : Fri Dec 16 12:45:21 2022
 Response via : Initial Calibration
 Integrator: ChemStation

Volume Inj. : 2 µl
 Signal #1 Phase : ZB-MR2 Signal #2 Phase: ZB-MR1
 Signal #1 Info : 30M x 0.32mm x0.2 Signal #2 Info : 30M x 0.32mm x 0.50µm

Compound	RT#1	RT#2	Resp#1	Resp#2	ng/ml	ng/ml

System Monitoring Compounds						
1) SA Tetrachlo...	2.697	3.459	50725727	2353.0E6	24.307	24.760
28) SA Decachlor...	7.826	8.911	59533301	432.1E6	25.695	25.224
Target Compounds						
2) A alpha-BHC	3.199	3.923	82967024	3029.5E6	23.154	24.123
3) MA gamma-BHC...	3.530	4.256	64529577	2350.1E6	23.210	25.272
4) MA Heptachlor	3.862	4.823	73723039	1564.5E6	23.555	25.827
5) MB Aldrin	4.140	5.161	73393755	1344.3E6	23.660	25.331
6) B beta-BHC	3.831	4.472	30851322	850.2E6	25.283	26.435
7) B delta-BHC	4.061	4.716	74255085	1650.1E6	23.300	25.703
8) B Heptachlo...	4.645	5.593	66259135	1097.6E6	24.111	25.521
9) A Endosulfan I	5.014	5.978	63252356	1008.7E6	24.161	25.347
10) B gamma-Chl...	4.894	5.847	67793839	1075.7E6	24.049	25.197
11) B alpha-Chl...	4.957	5.922	67228296	1059.6E6	24.224	25.276
12) B 4,4'-DDE	5.145	6.096	63923324	1031.0E6	23.652	25.098
13) MA Dieldrin	5.280	6.255	66395674	1033.9E6	23.734	25.518
14) MA Endrin	5.557	6.487	60825108	887.6E6	23.985	25.989
15) B Endosulfa...	5.856	6.716	54639751	786.1E6	23.971	25.981
16) A 4,4'-DDD	5.704	6.621	53255625	771.3E6	23.843	25.445
17) MA 4,4'-DDT	5.952	6.929	52023208	746.2E6	23.125	24.971
18) B Endrin al...	6.037	6.848	45217177	588.1E6	24.791	25.826
19) B Endosulfa...	6.260	7.080	56862075	668.2E6	24.537	25.404
20) A Methoxychlor	6.535	7.409	32612505	337.6E6	25.333	25.697
21) B Endrin ke...	6.771	7.570	67390592	681.0E6	24.915	25.474
22) Mirex	6.935	8.018	50882767	431.5E6	25.558	25.547

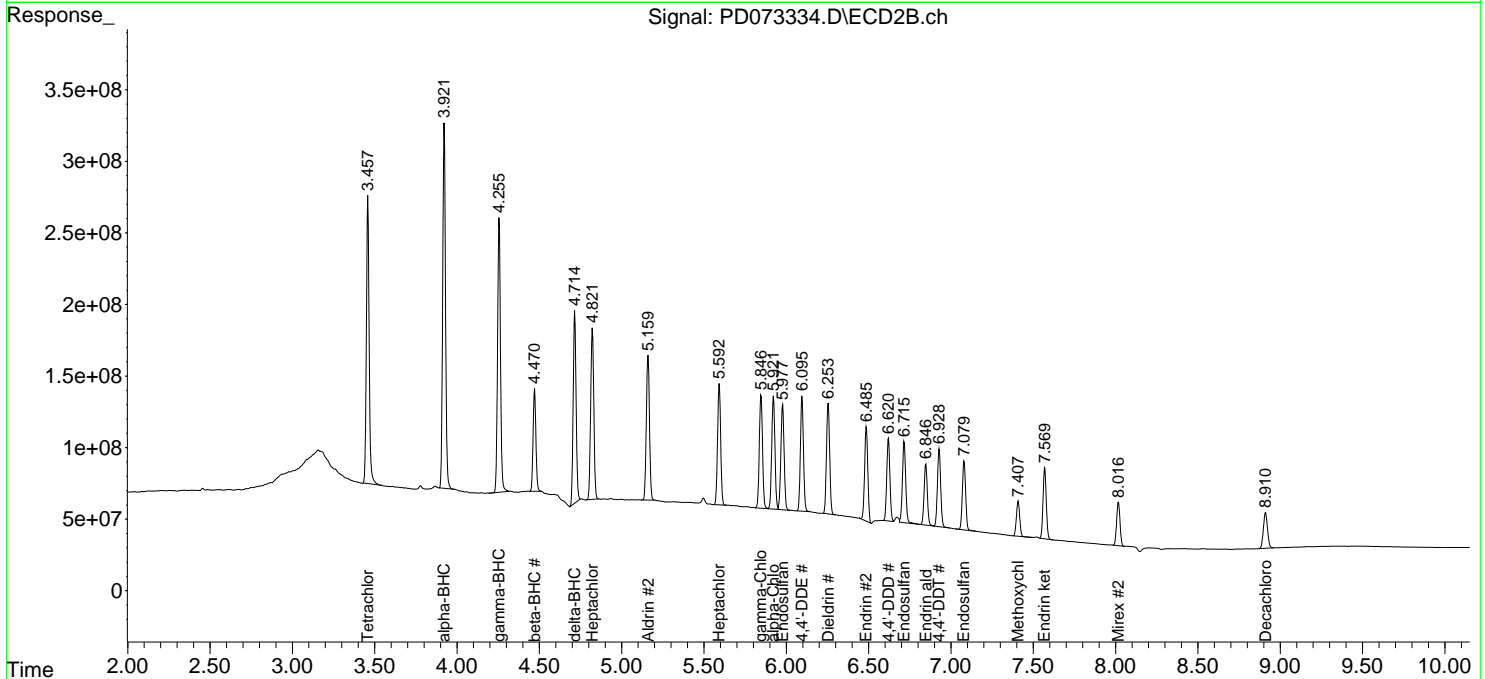
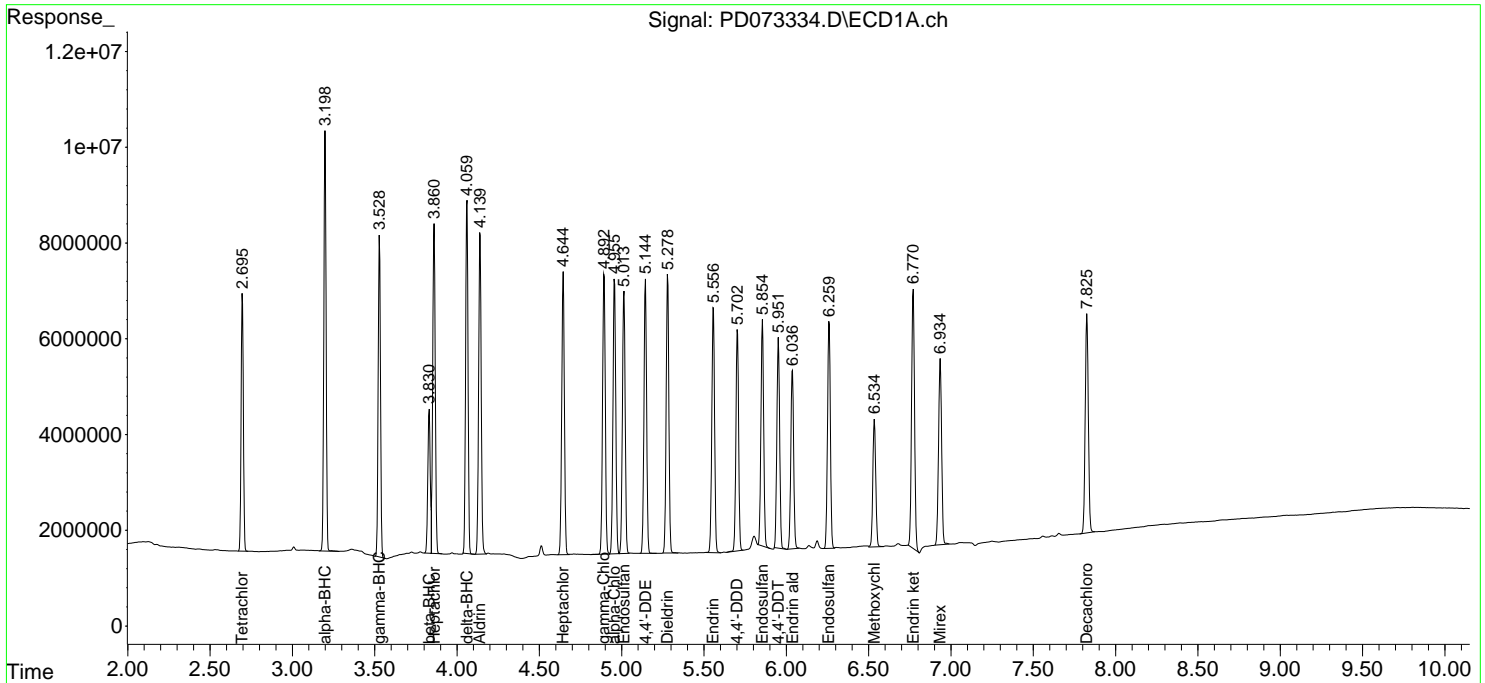
(f)=RT Delta > 1/2 Window (#)=Amounts differ by > 25% (m)=manual int.

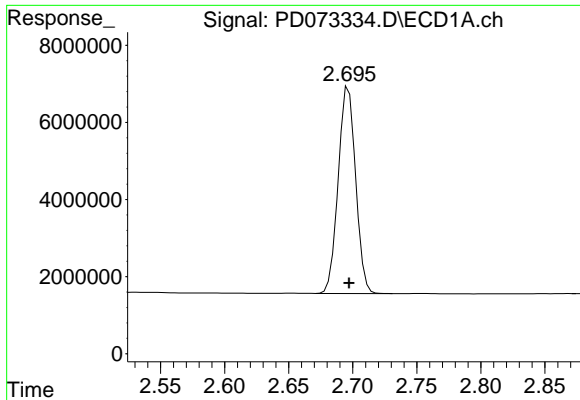
Data Path : Z:\pestpcbsrv\HPCHEM1\ECD_D\Data\PD121622\
 Data File : PD073334.D
 Signal(s) : Signal #1: ECD1A.ch Signal #2: ECD2B.ch
 Acq On : 16 Dec 2022 11:51
 Operator : AR\AJ
 Sample : PSTDICC025
 Misc :
 ALS Vial : 8 Sample Multiplier: 1

Instrument :
 ECD_D
 ClientSampleId :
 PSTDICC025

Integration File signal 1: autoint1.e
 Integration File signal 2: autoint2.e
 Quant Time: Dec 16 12:51:21 2022
 Quant Method : Z:\pestpcbsrv\HPCHEM1\ECD_D\Method\PD121622.M
 Quant Title : GC Extractables
 QLast Update : Fri Dec 16 12:45:21 2022
 Response via : Initial Calibration
 Integrator: ChemStation

Volume Inj. : 2 µl
 Signal #1 Phase : ZB-MR2 Signal #2 Phase: ZB-MR1
 Signal #1 Info : 30M x 0.32mm x0.2 Signal #2 Info : 30M x 0.32mm x 0.50µm

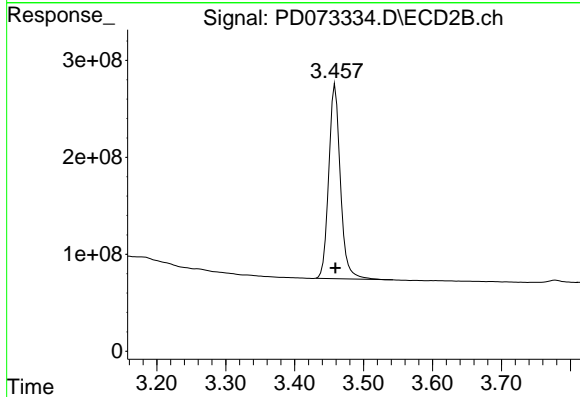




#1 Tetrachloro-m-xylene

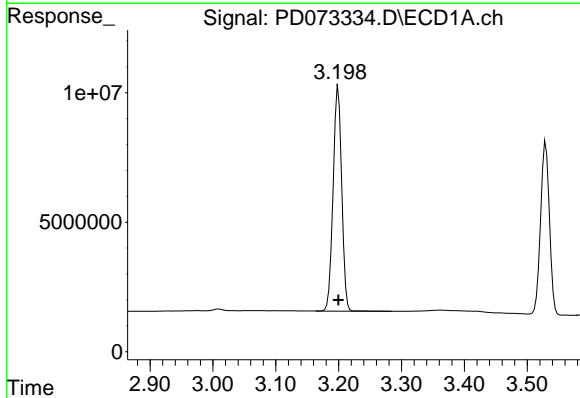
R.T.: 2.697 min
 Delta R.T.: 0.000 min
 Response: 50725727
 Conc: 24.31 ng/ml

Instrument :
 ECD_D
 ClientSampleId :
 PSTDICC025



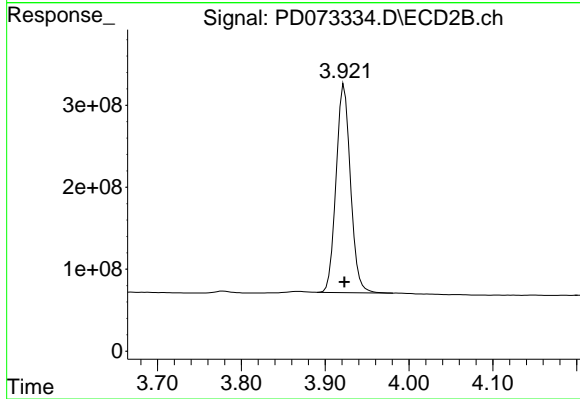
#1 Tetrachloro-m-xylene

R.T.: 3.459 min
 Delta R.T.: 0.000 min
 Response: 2352994827
 Conc: 24.76 ng/ml



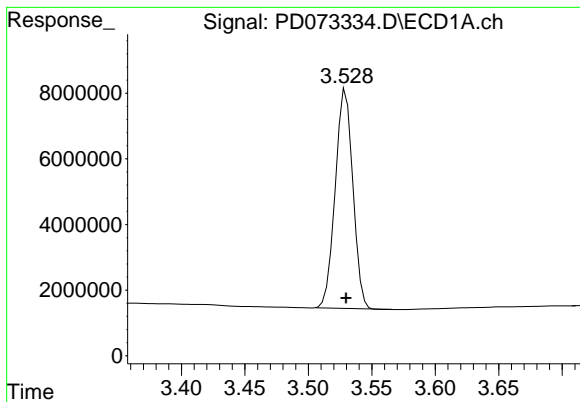
#2 alpha-BHC

R.T.: 3.199 min
 Delta R.T.: 0.000 min
 Response: 82967024
 Conc: 23.15 ng/ml



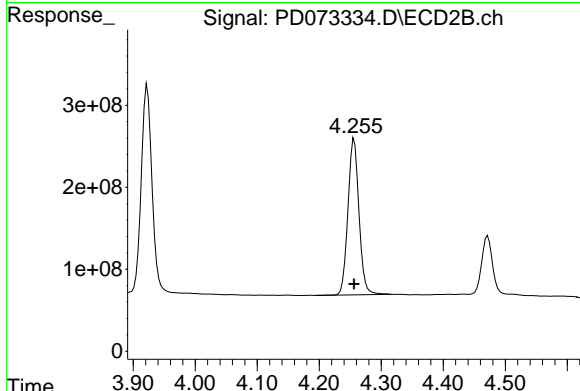
#2 alpha-BHC

R.T.: 3.923 min
 Delta R.T.: 0.000 min
 Response: 3029483761
 Conc: 24.12 ng/ml

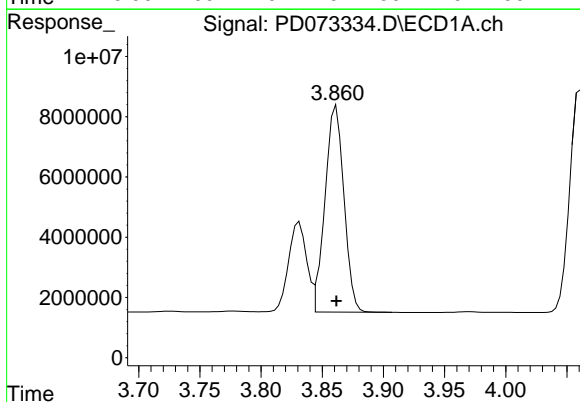


#3 gamma-BHC (Lindane)
 R.T.: 3.530 min
 Delta R.T.: 0.000 min
 Response: 64529577
 Conc: 23.21 ng/ml

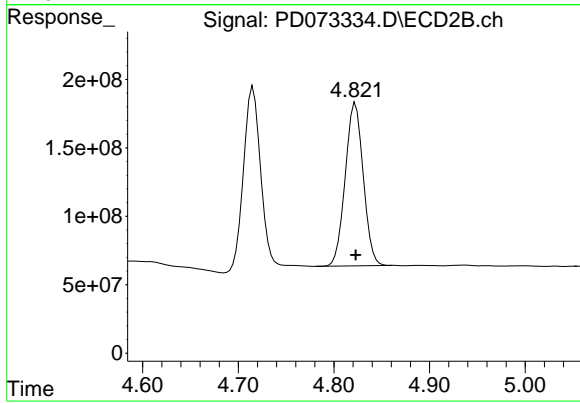
Instrument :
 ECD_D
 ClientSampleId :
 PSTDICC025



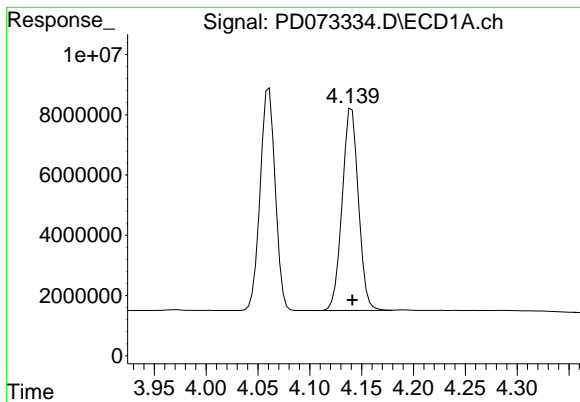
#3 gamma-BHC (Lindane)
 R.T.: 4.256 min
 Delta R.T.: 0.000 min
 Response: 2350142175
 Conc: 25.27 ng/ml



#4 Heptachlor
 R.T.: 3.862 min
 Delta R.T.: 0.000 min
 Response: 73723039
 Conc: 23.55 ng/ml

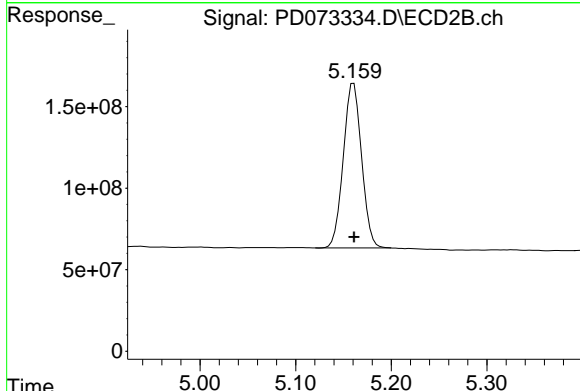


#4 Heptachlor
 R.T.: 4.823 min
 Delta R.T.: 0.000 min
 Response: 1564517618
 Conc: 25.83 ng/ml

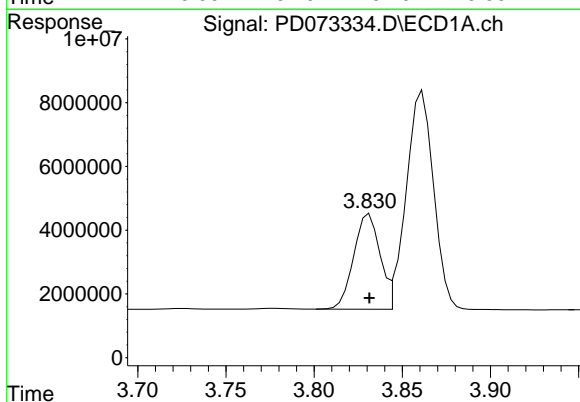


#5 Aldrin
 R.T.: 4.140 min
 Delta R.T.: 0.000 min
 Response: 73393755
 Conc: 23.66 ng/ml

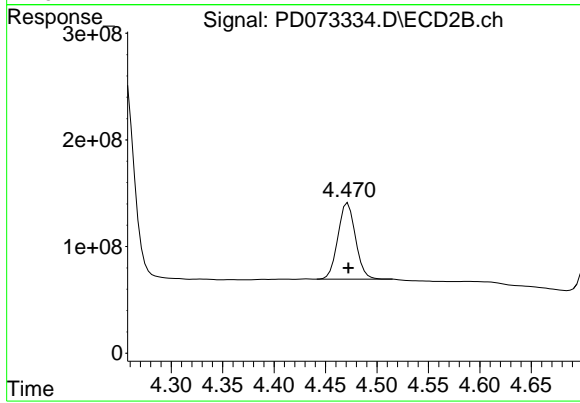
Instrument :
 ECD_D
 ClientSampleId :
 PSTDICC025



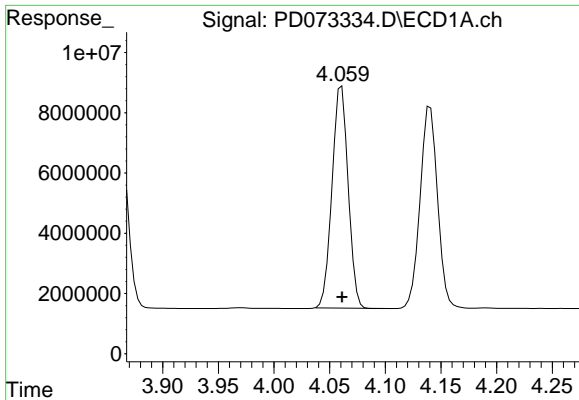
#5 Aldrin
 R.T.: 5.161 min
 Delta R.T.: 0.000 min
 Response: 1344250734
 Conc: 25.33 ng/ml



#6 beta-BHC
 R.T.: 3.831 min
 Delta R.T.: 0.000 min
 Response: 30851322
 Conc: 25.28 ng/ml



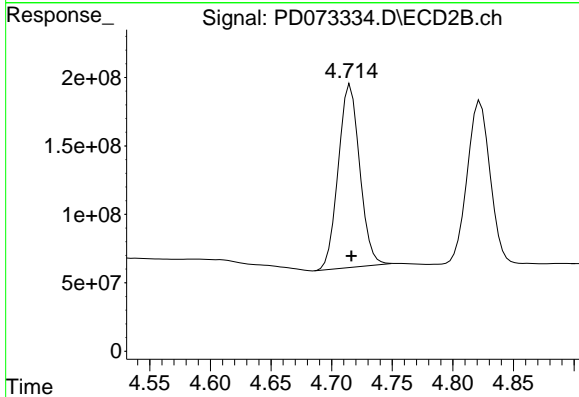
#6 beta-BHC
 R.T.: 4.472 min
 Delta R.T.: 0.000 min
 Response: 850225108
 Conc: 26.43 ng/ml



#7 delta-BHC

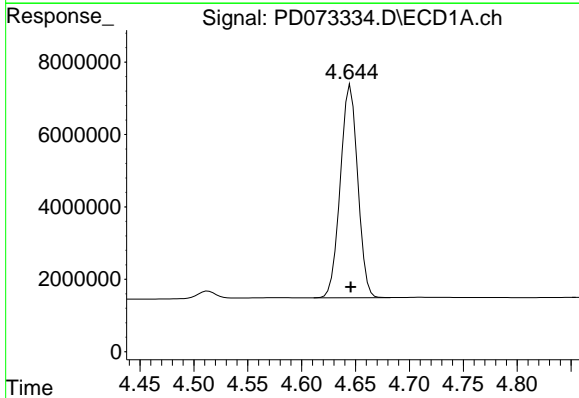
R.T.: 4.061 min
 Delta R.T.: 0.000 min
 Response: 74255085
 Conc: 23.30 ng/ml

Instrument :
 ECD_D
 ClientSampleId :
 PSTDICC025



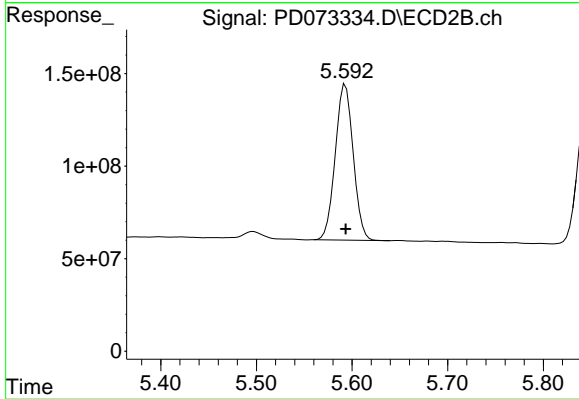
#7 delta-BHC

R.T.: 4.716 min
 Delta R.T.: 0.000 min
 Response: 1650079388
 Conc: 25.70 ng/ml



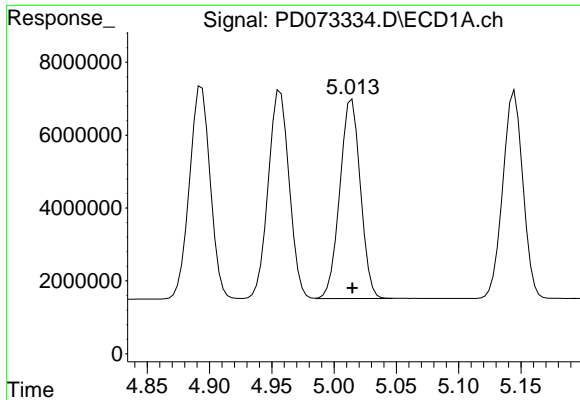
#8 Heptachlor epoxide

R.T.: 4.645 min
 Delta R.T.: 0.000 min
 Response: 66259135
 Conc: 24.11 ng/ml



#8 Heptachlor epoxide

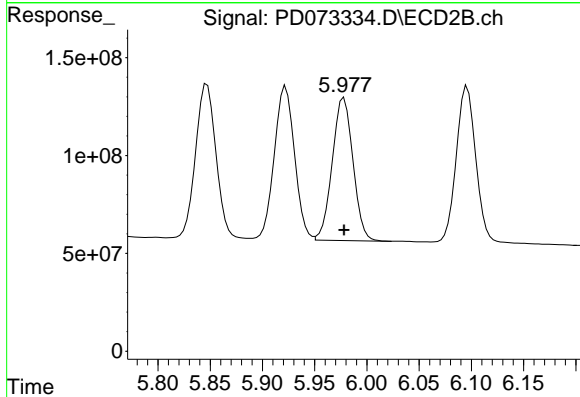
R.T.: 5.593 min
 Delta R.T.: 0.000 min
 Response: 1097627906
 Conc: 25.52 ng/ml



#9 Endosulfan I

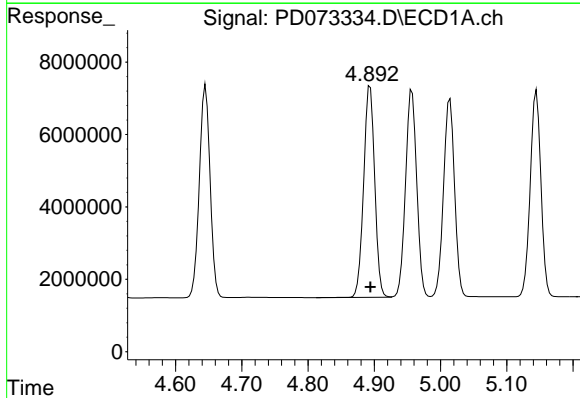
R.T.: 5.014 min
 Delta R.T.: 0.000 min
 Response: 63252356
 Conc: 24.16 ng/ml

Instrument :
 ECD_D
 ClientSampleId :
 PSTDICC025



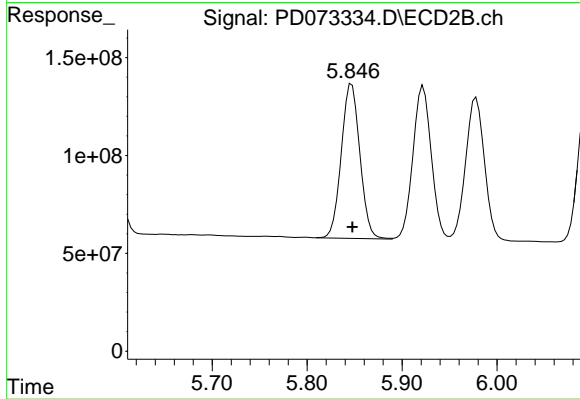
#9 Endosulfan I

R.T.: 5.978 min
 Delta R.T.: 0.000 min
 Response: 1008693066
 Conc: 25.35 ng/ml



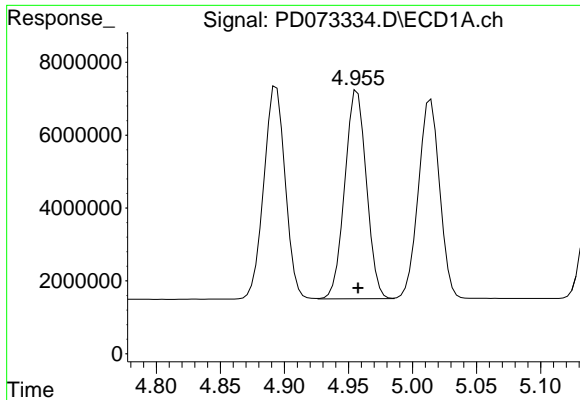
#10 gamma-Chlordane

R.T.: 4.894 min
 Delta R.T.: 0.000 min
 Response: 67793839
 Conc: 24.05 ng/ml



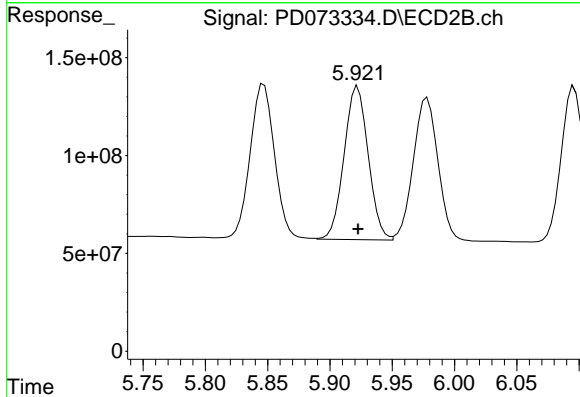
#10 gamma-Chlordane

R.T.: 5.847 min
 Delta R.T.: 0.000 min
 Response: 1075700697
 Conc: 25.20 ng/ml

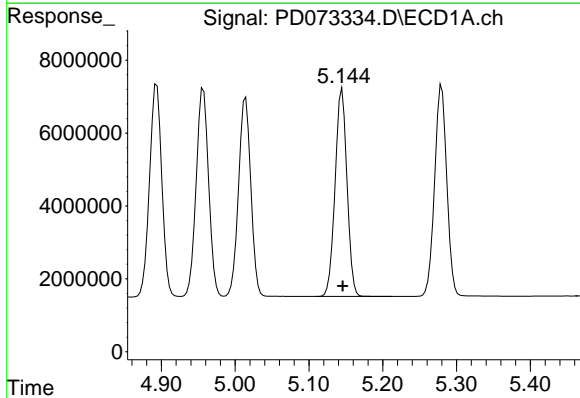


#11 alpha-Chlordane
 R.T.: 4.957 min
 Delta R.T.: 0.000 min
 Response: 67228296
 Conc: 24.22 ng/ml

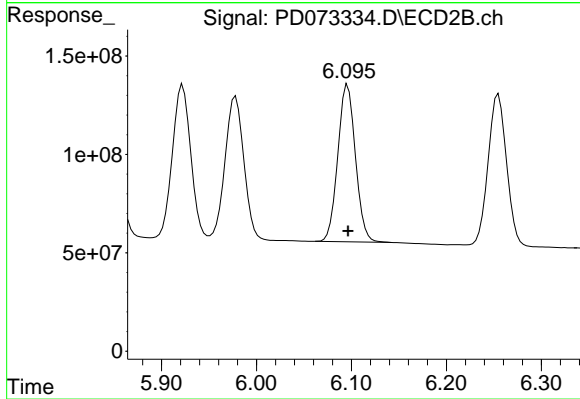
Instrument :
 ECD_D
 ClientSampleId :
 PSTDICC025



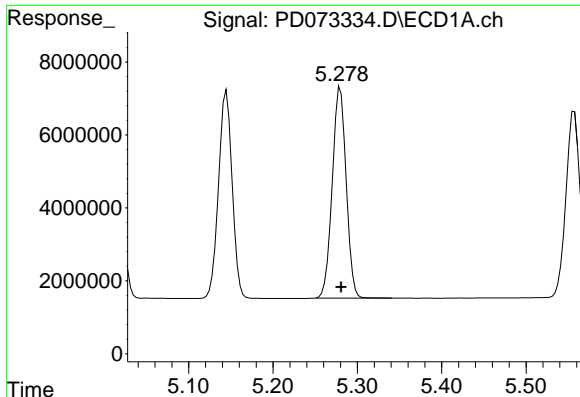
#11 alpha-Chlordane
 R.T.: 5.922 min
 Delta R.T.: 0.000 min
 Response: 1059588452
 Conc: 25.28 ng/ml



#12 4,4'-DDE
 R.T.: 5.145 min
 Delta R.T.: 0.000 min
 Response: 63923324
 Conc: 23.65 ng/ml



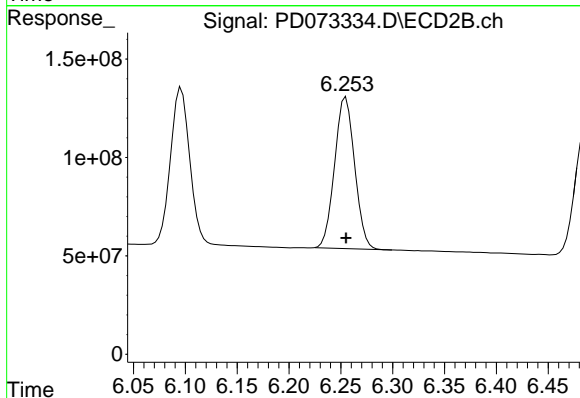
#12 4,4'-DDE
 R.T.: 6.096 min
 Delta R.T.: 0.000 min
 Response: 1031015206
 Conc: 25.10 ng/ml



#13 Dieldrin

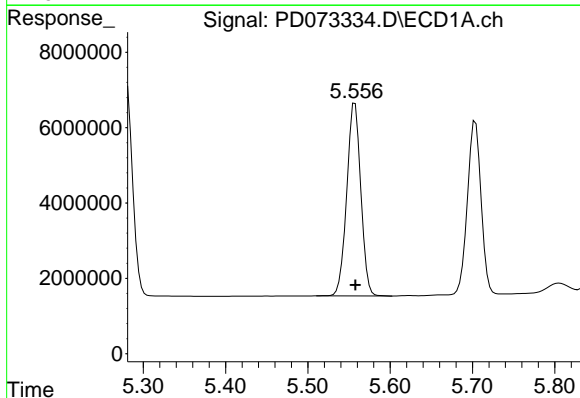
R.T.: 5.280 min
 Delta R.T.: 0.000 min
 Response: 66395674
 Conc: 23.73 ng/ml

Instrument :
 ECD_D
 ClientSampleId :
 PSTDICC025



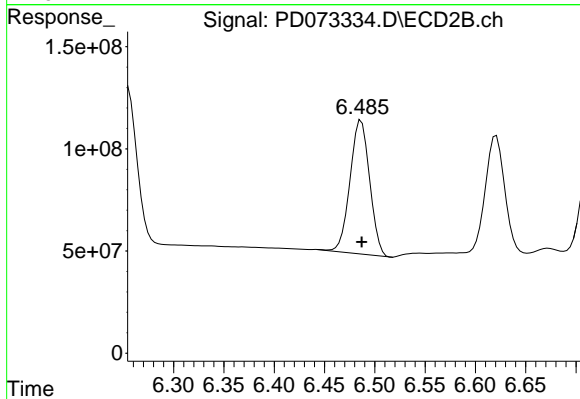
#13 Dieldrin

R.T.: 6.255 min
 Delta R.T.: 0.000 min
 Response: 1033931987
 Conc: 25.52 ng/ml



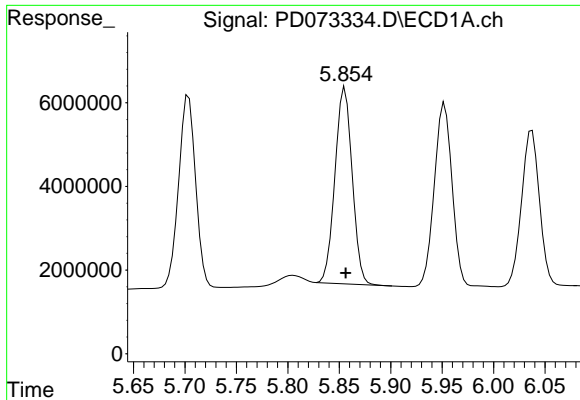
#14 Endrin

R.T.: 5.557 min
 Delta R.T.: 0.000 min
 Response: 60825108
 Conc: 23.98 ng/ml



#14 Endrin

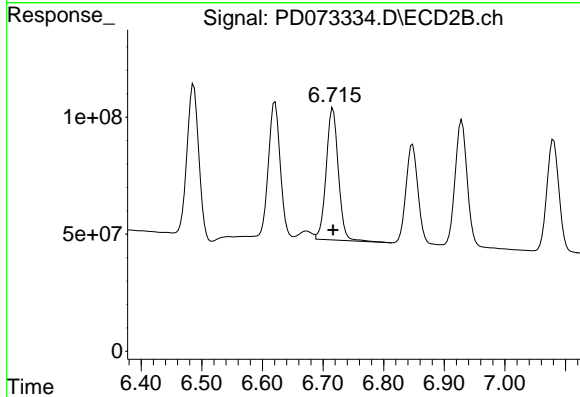
R.T.: 6.487 min
 Delta R.T.: 0.000 min
 Response: 887580315
 Conc: 25.99 ng/ml



#15 Endosulfan II

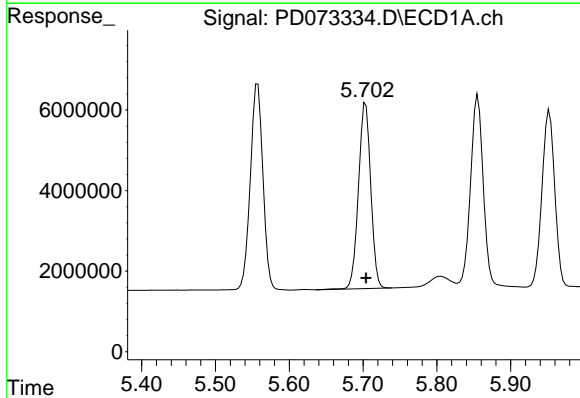
R.T.: 5.856 min
 Delta R.T.: -0.001 min
 Response: 54639751
 Conc: 23.97 ng/ml

Instrument :
 ECD_D
 ClientSampleId :
 PSTDICC025



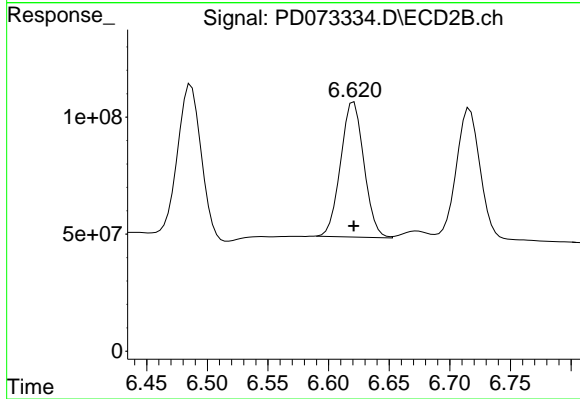
#15 Endosulfan II

R.T.: 6.716 min
 Delta R.T.: 0.000 min
 Response: 786139744
 Conc: 25.98 ng/ml



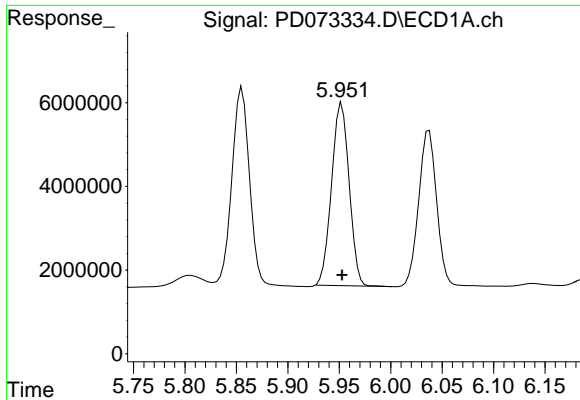
#16 4,4'-DDD

R.T.: 5.704 min
 Delta R.T.: 0.000 min
 Response: 53255625
 Conc: 23.84 ng/ml



#16 4,4'-DDD

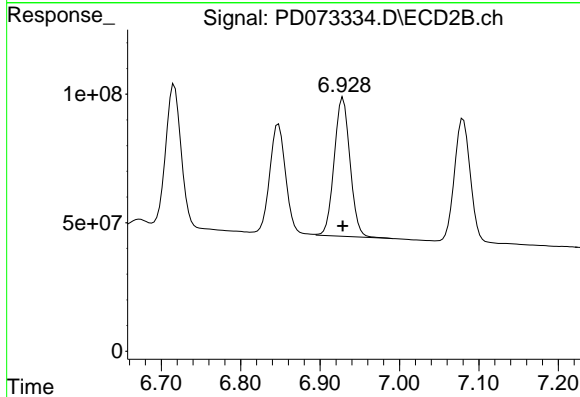
R.T.: 6.621 min
 Delta R.T.: 0.000 min
 Response: 771330587
 Conc: 25.45 ng/ml



#17 4,4'-DDT

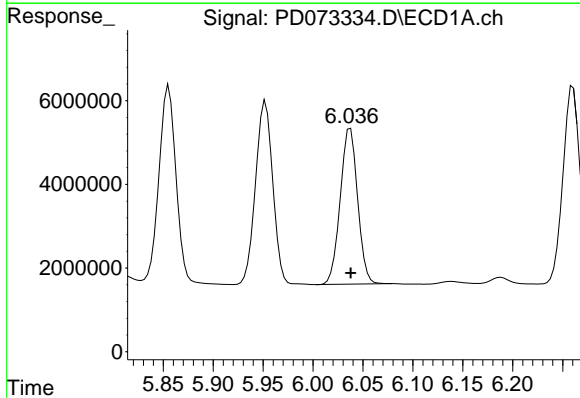
R.T.: 5.952 min
 Delta R.T.: 0.000 min
 Response: 52023208
 Conc: 23.12 ng/ml

Instrument :
 ECD_D
 ClientSampleId :
 PSTDICC025



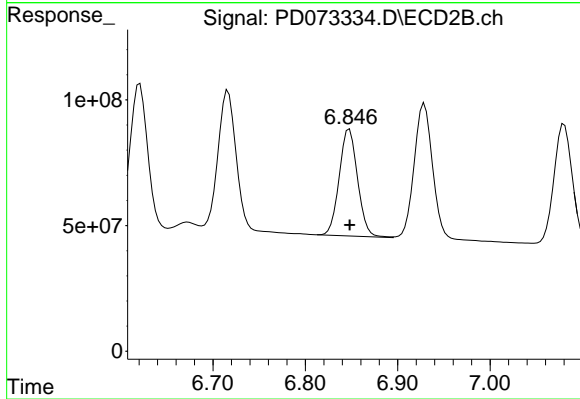
#17 4,4'-DDT

R.T.: 6.929 min
 Delta R.T.: 0.000 min
 Response: 746211413
 Conc: 24.97 ng/ml



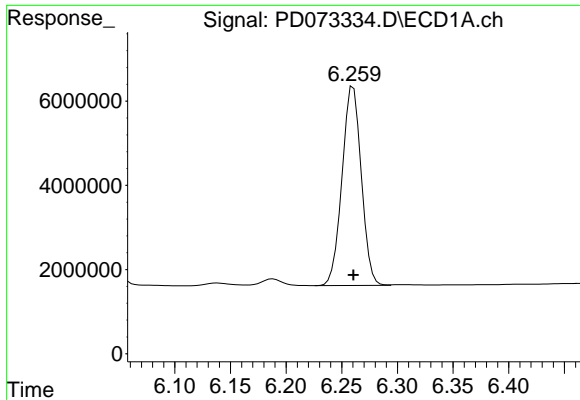
#18 Endrin aldehyde

R.T.: 6.037 min
 Delta R.T.: 0.000 min
 Response: 45217177
 Conc: 24.79 ng/ml



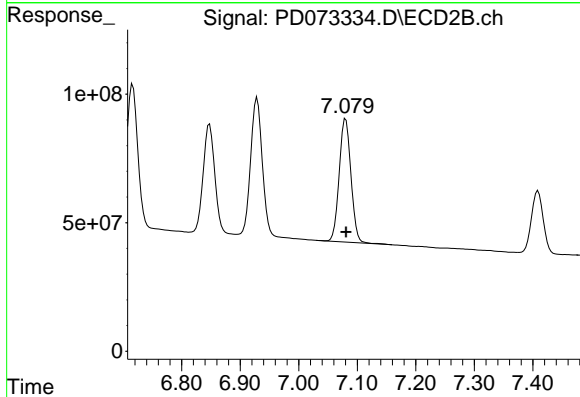
#18 Endrin aldehyde

R.T.: 6.848 min
 Delta R.T.: 0.000 min
 Response: 588059798
 Conc: 25.83 ng/ml

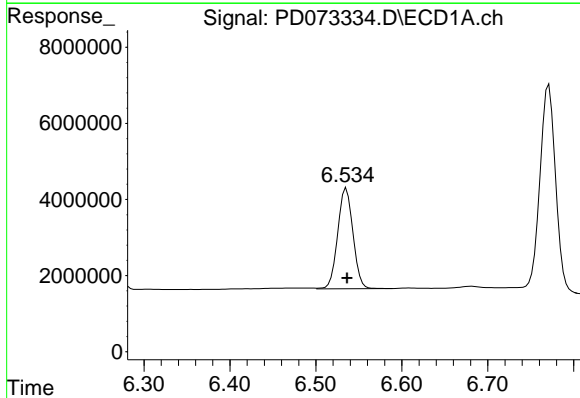


#19 Endosulfan Sulfate
 R.T.: 6.260 min
 Delta R.T.: 0.000 min
 Response: 56862075
 Conc: 24.54 ng/ml

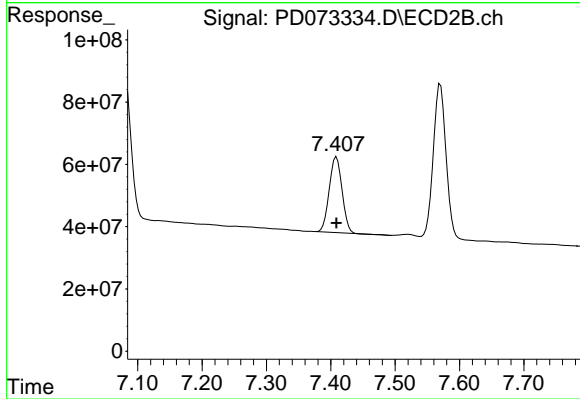
Instrument :
 ECD_D
 ClientSampleId :
 PSTDICC025



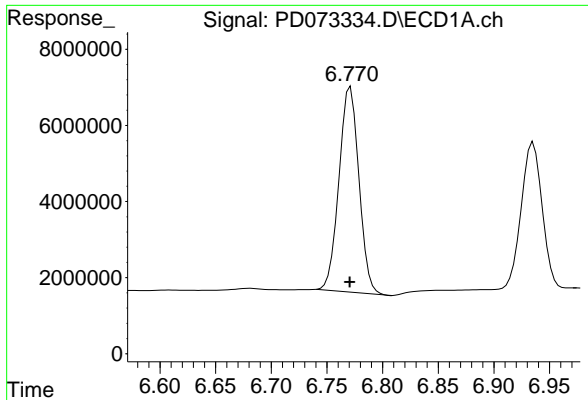
#19 Endosulfan Sulfate
 R.T.: 7.080 min
 Delta R.T.: 0.000 min
 Response: 668203031
 Conc: 25.40 ng/ml



#20 Methoxychlor
 R.T.: 6.535 min
 Delta R.T.: -0.001 min
 Response: 32612505
 Conc: 25.33 ng/ml

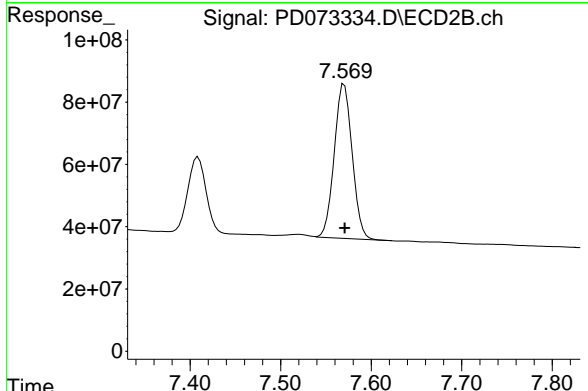


#20 Methoxychlor
 R.T.: 7.409 min
 Delta R.T.: 0.000 min
 Response: 337636900
 Conc: 25.70 ng/ml

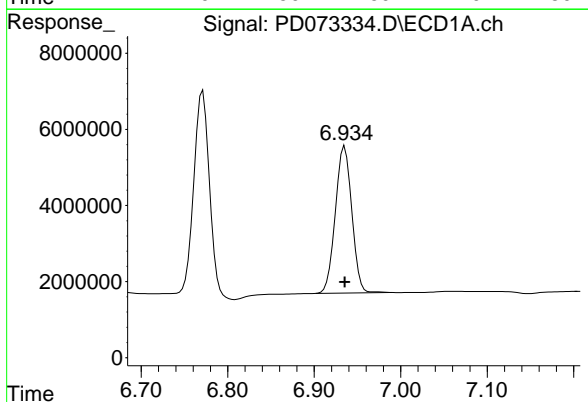


#21 Endrin ketone
 R.T.: 6.771 min
 Delta R.T.: 0.000 min
 Response: 67390592
 Conc: 24.92 ng/ml

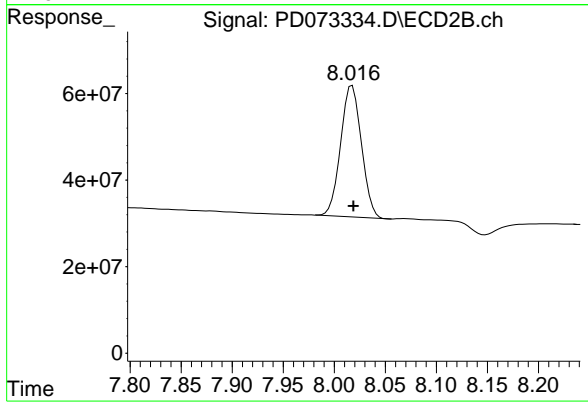
Instrument :
 ECD_D
 ClientSampleId :
 PSTDICC025



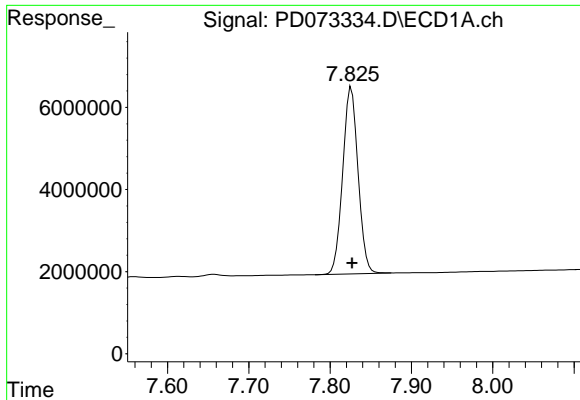
#21 Endrin ketone
 R.T.: 7.570 min
 Delta R.T.: 0.000 min
 Response: 681049081
 Conc: 25.47 ng/ml



#22 Mirex
 R.T.: 6.935 min
 Delta R.T.: 0.000 min
 Response: 50882767
 Conc: 25.56 ng/ml

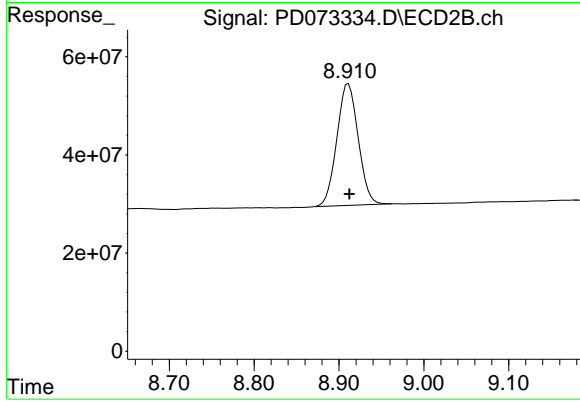


#22 Mirex
 R.T.: 8.018 min
 Delta R.T.: -0.001 min
 Response: 431535005
 Conc: 25.55 ng/ml



#28 Decachlorobiphenyl
R.T.: 7.826 min
Delta R.T.: 0.000 min
Response: 59533301
Conc: 25.70 ng/ml

Instrument :
ECD_D
ClientSampleId :
PSTDICC025



#28 Decachlorobiphenyl
R.T.: 8.911 min
Delta R.T.: 0.000 min
Response: 432124063
Conc: 25.22 ng/ml