

Data Path : Z:\pestpcbsrv\HPCHEM1\ECD\_D\Data\PD121622\  
 Data File : PD073342.D  
 Signal(s) : Signal #1: ECD1A.ch Signal #2: ECD2B.ch  
 Acq On : 16 Dec 2022 14:33  
 Operator : AR\AJ  
 Sample : TOXICC750  
 Misc :  
 ALS Vial : 16 Sample Multiplier: 1

Instrument :  
 ECD\_D  
 ClientSampleId :  
 PTOXICC750

Integration File signal 1: autoint1.e  
 Integration File signal 2: autoint2.e  
 Quant Time: Dec 16 15:33:59 2022  
 Quant Method : Z:\pestpcbsrv\HPCHEM1\ECD\_D\Method\DTX121622.M  
 Quant Title : GC Extractables  
 QLast Update : Fri Dec 16 15:33:30 2022  
 Response via : Initial Calibration  
 Integrator: ChemStation

Volume Inj. : 1 µl  
 Signal #1 Phase : ZB-MR2 Signal #2 Phase: ZB-MR1  
 Signal #1 Info : 30M x 0.32mm x0.2 Signal #2 Info : 30M x 0.32mm x 0.50µm

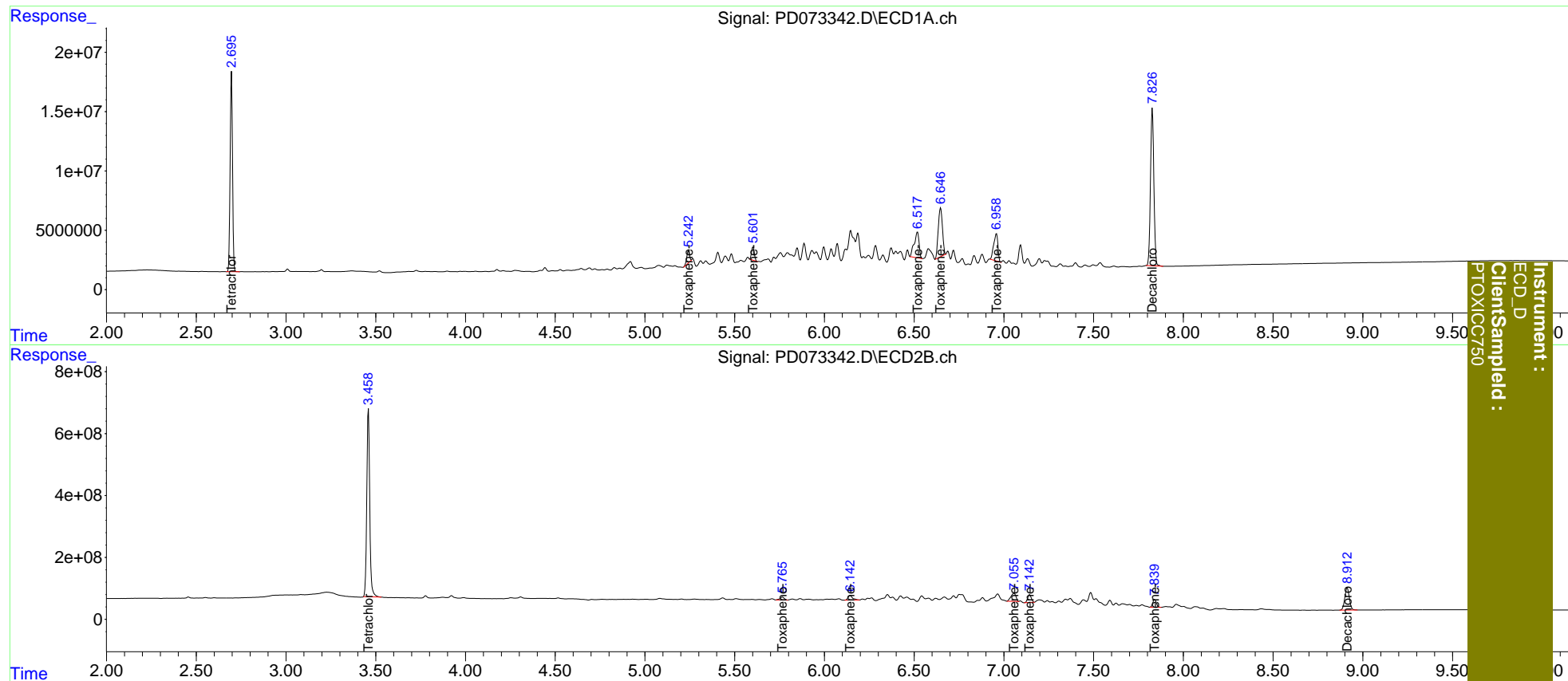
Compound	RT#1	RT#2	Resp#1	Resp#2	ng/ml	ng/ml
-----						
System Monitoring Compounds						
1) SA Tetrachlo...	2.696	3.459	154.4E6	6960.0E6	73.411	72.175
7) SA Decachlor...	7.827	8.913	173.2E6	1263.7E6	72.274	71.501
Target Compounds						
2) Toxaphene-1	5.243	5.766	10990355	149.9E6	714.013	752.930
3) Toxaphene-2	5.602	6.144	12037730	265.5E6	725.912	717.954
4) Toxaphene-3	6.519	7.057	40980584	498.4E6	762.209	722.245
5) Toxaphene-4	6.648	7.143	66527352	355.7E6	744.501	713.483
6) Toxaphene-5	6.959	7.840	37273075	356.6E6	741.281	718.866
-----						

(f)=RT Delta > 1/2 Window (#)=Amounts differ by > 25% (m)=manual int.

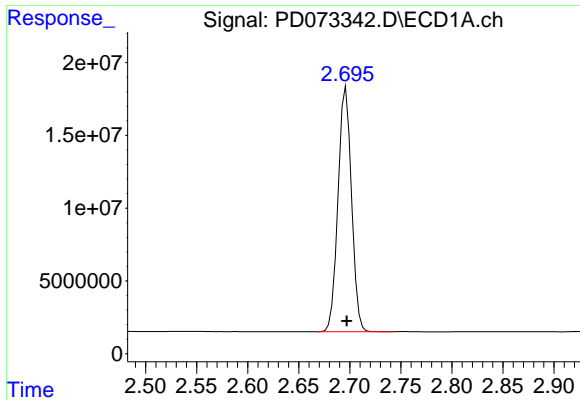
Data Path : Z:\pestpcbsrv\HPCHEM1\ECD\_D\Data\PD121622\  
 Data File : PD073342.D  
 Signal(s) : Signal #1: ECD1A.ch Signal #2: ECD2B.ch  
 Acq On : 16 Dec 2022 14:33  
 Operator : AR\AJ  
 Sample : TOXIC750  
 Misc :  
 ALS Vial : 16 Sample Multiplier: 1

Integration File signal 1: autoint1.e  
 Integration File signal 2: autoint2.e  
 Quant Time: Dec 16 15:33:59 2022  
 Quant Method : Z:\pestpcbsrv\HPCHEM1\ECD\_D\Method\DTX121622.M  
 Quant Title : GC Extractables  
 QLast Update : Fri Dec 16 15:33:30 2022  
 Response via : Initial Calibration  
 Integrator: ChemStation

Volume Inj. : 1 µl  
 Signal #1 Phase : ZB-MR2 Signal #2 Phase: ZB-MR1  
 Signal #1 Info : 30M x 0.32mm x0.2 Signal #2 Info : 30M x 0.32mm x 0.50µm



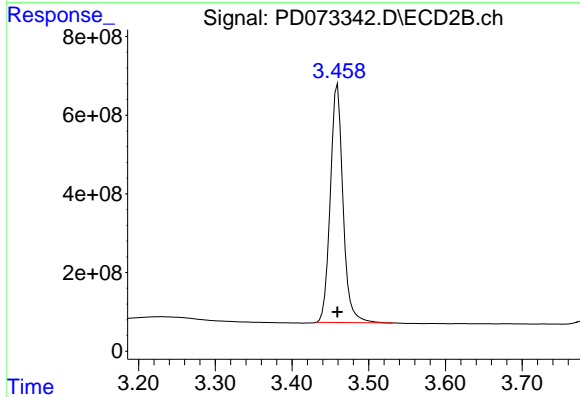
Instrument :  
 ECD\_D  
 ClientSampleID :  
 PTOXIC750



#1 Tetrachloro-m-xylene

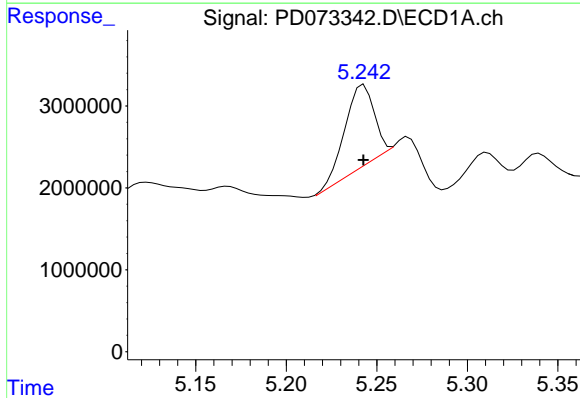
R.T.: 2.696 min  
 Delta R.T.: 0.000 min  
 Response: 154406783  
 Conc: 73.41 ng/ml

Instrument :  
 ECD\_D  
 ClientSampleId :  
 PTOXICC750



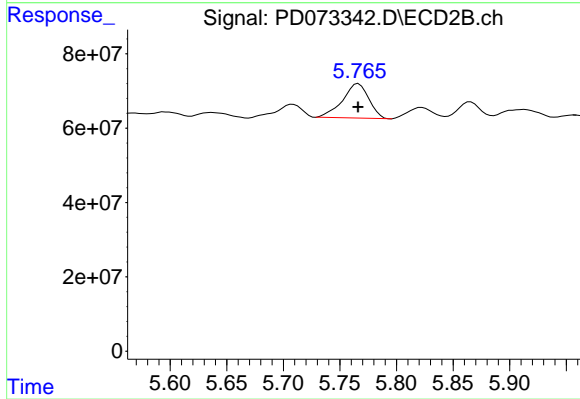
#1 Tetrachloro-m-xylene

R.T.: 3.459 min  
 Delta R.T.: 0.000 min  
 Response: 6960045799  
 Conc: 72.17 ng/ml



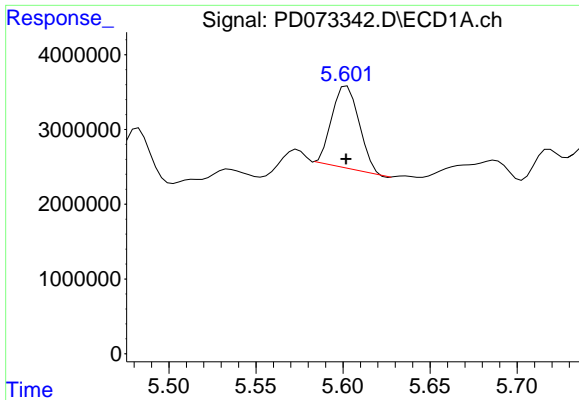
#2 Toxaphene-1

R.T.: 5.243 min  
 Delta R.T.: 0.000 min  
 Response: 10990355  
 Conc: 714.01 ng/ml



#2 Toxaphene-1

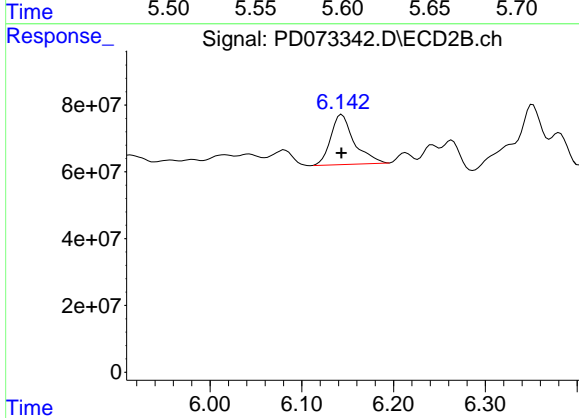
R.T.: 5.766 min  
 Delta R.T.: 0.000 min  
 Response: 149947479  
 Conc: 752.93 ng/ml



#3 Toxaphene-2

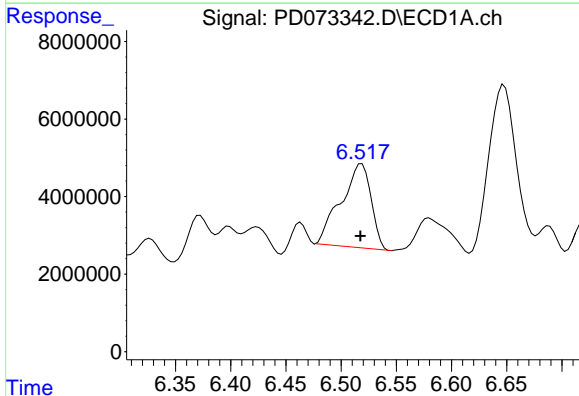
R.T.: 5.602 min  
 Delta R.T.: 0.000 min  
 Response: 12037730  
 Conc: 725.91 ng/ml

Instrument :  
 ECD\_D  
 ClientSampleId :  
 PTOXICC750



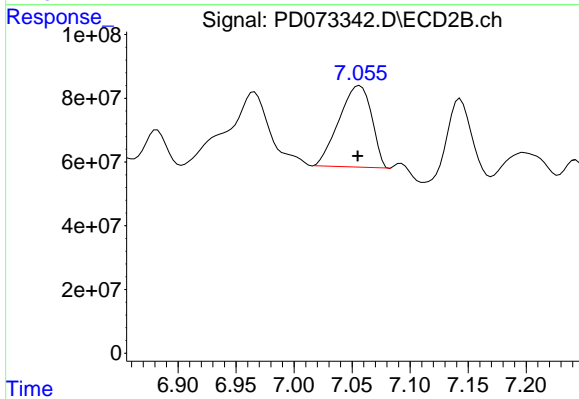
#3 Toxaphene-2

R.T.: 6.144 min  
 Delta R.T.: 0.000 min  
 Response: 265494982  
 Conc: 717.95 ng/ml



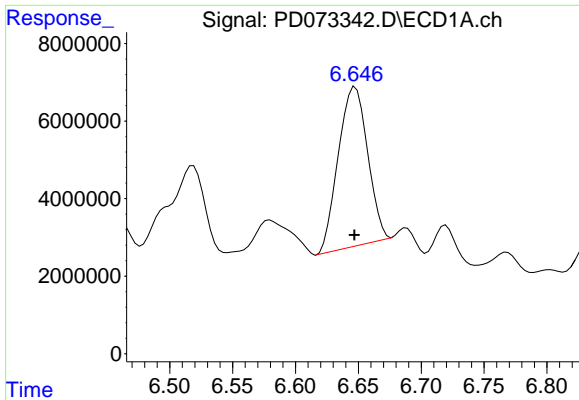
#4 Toxaphene-3

R.T.: 6.519 min  
 Delta R.T.: 0.001 min  
 Response: 40980584  
 Conc: 762.21 ng/ml



#4 Toxaphene-3

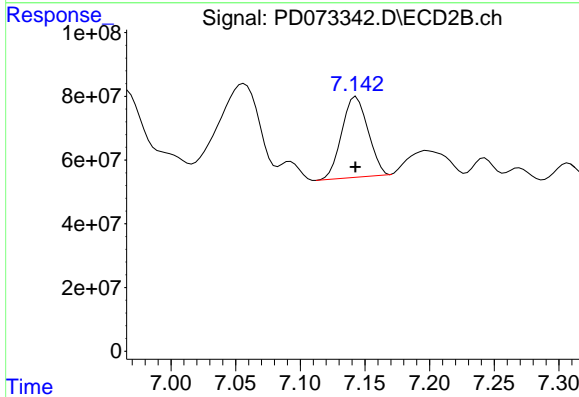
R.T.: 7.057 min  
 Delta R.T.: 0.002 min  
 Response: 498443819  
 Conc: 722.25 ng/ml



#5 Toxaphene-4

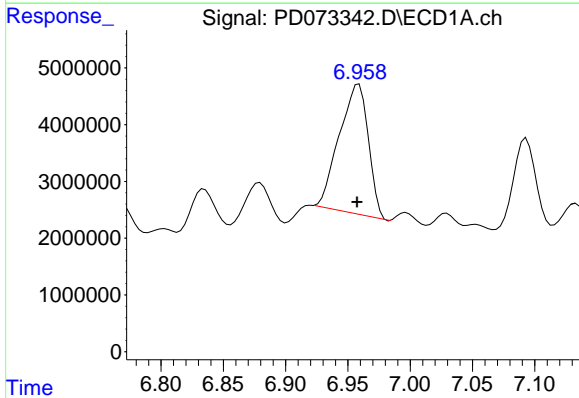
R.T.: 6.648 min  
 Delta R.T.: 0.000 min  
 Response: 66527352  
 Conc: 744.50 ng/ml

Instrument :  
 ECD\_D  
 ClientSampleId :  
 PTOXICC750



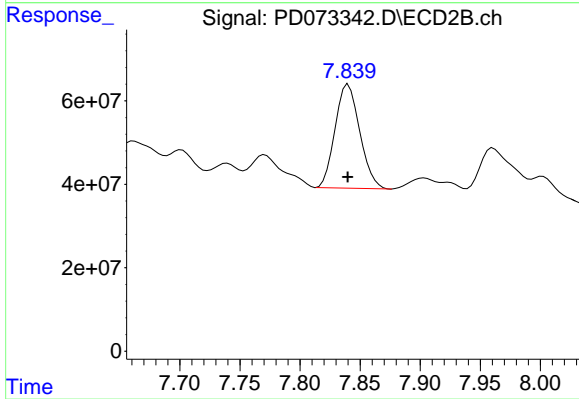
#5 Toxaphene-4

R.T.: 7.143 min  
 Delta R.T.: 0.000 min  
 Response: 355747282  
 Conc: 713.48 ng/ml



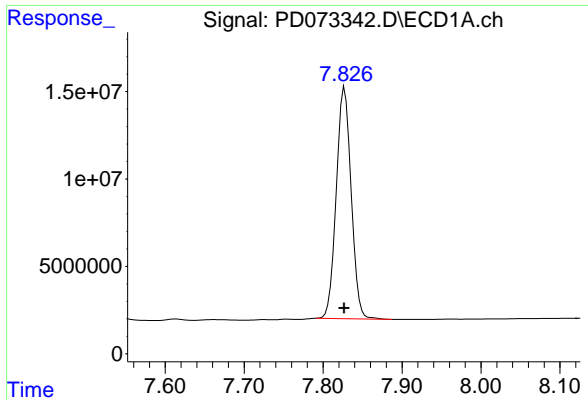
#6 Toxaphene-5

R.T.: 6.959 min  
 Delta R.T.: 0.001 min  
 Response: 37273075  
 Conc: 741.28 ng/ml



#6 Toxaphene-5

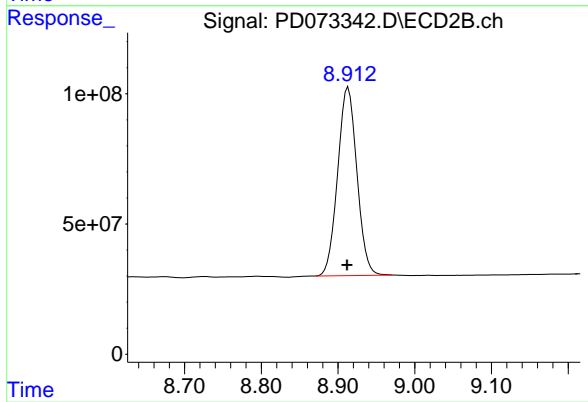
R.T.: 7.840 min  
 Delta R.T.: 0.000 min  
 Response: 356626480  
 Conc: 718.87 ng/ml



#7 Decachlorobiphenyl

R.T.: 7.827 min  
Delta R.T.: 0.000 min  
Response: 173238638  
Conc: 72.27 ng/ml

Instrument :  
ECD\_D  
ClientSampleId :  
PTOXICC750



#7 Decachlorobiphenyl

R.T.: 8.913 min  
Delta R.T.: 0.001 min  
Response: 1263676688  
Conc: 71.50 ng/ml